

## PLAY PEN — CHEOY LEE



**Builder:** CHEOY LEE

**Year Built:** 1984

**Model:** Motor Yacht

**Price:** PRICE ON APPLICATION

**Location:** United States

**LOA:** 61' 0" (18.59m)

**Beam:** 17' 2" (5.23m)

**Min Draft:** 5' 8" (1.73m)

**Cruise Speed:** 9 Kts. (10 MPH)

**Max Speed:** 12 Kts. (14 MPH)

Our experienced yacht broker, Andrey Shestakov, will help you choose and buy a yacht that best suits your needs **Play Pen — CHEOY LEE** from our catalogue. Presently, at Shestakov Yacht Sales Inc., we have a wide variety of yachts available on our sale's list. We also work in close contact with all the big yacht manufacturers from all over the world.

If you would like to buy a yacht **Play Pen — CHEOY LEE** or would like help answering any questions concerning purchasing, selling or chartering a yacht, please call **+1(954)274-4435**

# TABLE OF CONTENTS

---

TABLE OF CONTENTS	2
SPECIFICATIONS	7
Overview	7
Basic Information	7
Dimensions	7
Speed, Capacities and Weight	7
Accommodations	8
Hull and Deck Information	8
Engine Information	8
DETAILED INFORMATION	9
Accommodations	9
Salon	10
Aft Deck	10
Cockpit	10
Galley	10
Pilothouse	10
Master Stateroom	11
Fly Bridge	11
Deck Equipment	11
Electronics	12
Mechanical	12
Tenders	12
Electrical Equipment	12
Exclusions	13
Disclaimer	13
PHOTOS	14
Starboard bow	14
Canvas enclosure and radar arch	14

Starboard gunwale	14
Bow sun lounge	14
Port bow deck	14
Tender	14
Aft deck and aft cockpit	15
Aft deck	15
Lazarette	15
Lazarette	15
Main salon	15
Main salon	15
Propane fire place	16
Main salon	16
Main salon	16
Dinette	16
Granite dinette table	16
Main salon	16
Main salon	17
Main salon	17
Main salon	17
Main salon	17
Main salon	17
Main salon	17
Main salon facing forward	18
Galley facing aft	18
Galley	18
Galley	18
Galley	19
Passageway leading to Pilothouse	19
Pilothouse facing aft in passageway	19
Pilothouse facing aft	19

Pilothouse	20
Pilothouse	20
Pilothouse	20
Pilothouse	20
Pilothouse	20
Pilothouse	20
Pilothouse helm	21
Helm	21
Helm	21
Pilothouse helm	21
A/C D/C electric panel	21
A/C D/C electric panel	21
Flybridge hatch to Pilothouse	22
Flybridge helm	22
Radios	22
Flybridge helm	22
Flybridge seating	22
Flybridge seating	22
Flybridge seating	23
Flybridge canvas covers	23
Passageway leading to Guest/VIP staterooms	23
Guest stateroom 1	23
Guest stateroom 1	23
Guest stateroom 1	23
Guest stateroom 1	24
Washer/dryer	24
Guest head/shower	24
Guest head/shower	24
Guest head/shower	25

---

Guest head shower	25
Guest stateroom 2	25
Guest stateroom 2	25
VIP stateroom	26
Guest stateroom 2	26
VIP stateroom	26
VIP stateroom	26
VIP head/shower	27
VIP head/shower	27
VIP head/shower	27
VIP shower	27
Stairway to Master stateroom	28
Salon stairway to Master stateroom	28
Master stateroom	28
Master stateroom	28
Master stateroom	28
Master stateroom	28
Master stateroom	29
Master stateroom	29
Master closet	29
Master head/shower	29
Master head/shower	30
Master head/shower	30
Master shower	30
Engine room	30
Engine room	31
Engine room	31
Engine room	31
Engine room	31

---

---

Haul out	32
Haul out	32
Haul out	32
Haul out	32
Deck plan	33
Deck plan	33
CONTACTS	34
Contact details	34
Telephones	34
Office hours	34
Address	34

---

# SPECIFICATIONS

---

## Overview

---

61' Cheoy Lee LRC, twin Caterpillar 3208T, has spacious upgraded interiors with a practical layout throughout including four staterooms! Play Pen was built for long range cruising, she has seen two refits (2005/2010) along with continuous upgrades and maintenance by a very meticulous owner/operator. Vessel underwent complete paint job 01/2015 including new bottom paint. This is a must see if you are looking for a LRC. Conveniently located in Dania Beach, Fl. Come see this Cheoy Lee at the Fort Lauderdale International Boat Show 2015, South Dock behind the International Hall of Fame.

## Basic Information

---

**Category:** Motor Yacht

**Sub Category:** Long Range Cruiser

**Model Year:** 1984

**Year Built:** 1984

**Country:** United States

**Vessel Top:** Bimini Top

**Fly Bridge:** Yes

**Cockpit:** Yes

## Dimensions

---

**LOA:** 61' 0" (18.59m)

**LWL:** 56' 2" (17.12m)

**Beam:** 17' 2" (5.23m)

**Min Draft:** 5' 8" (1.73m)

**MFG Length:** 61' 11" (18.87m)

## Speed, Capacities and Weight

---

**Cruise Speed:** 9 Kts. (10 MPH)

**Cruise Speed RPM:** 1800 Kts.

**Max Speed:** 12 Kts. (14 MPH)

**Max Speed RPM:** 2350 Kts.

**Displacement:** 90000 Pounds

**Water Capacity:** 500 Gallons

**Holding Tank:** 300 Gallons

**Fuel Capacity:** 2500 Gallons

---

## Accommodations

---

**Total Cabins:** 4

**Total Berths:** 8

**Sleeps:** 12

**Total Heads:** 3

---

## Hull and Deck Information

---

**Hull Material:** Fiberglass

**Hull Configuration:** Full Displacement

**Hull Color:** white

---

## Engine Information

---

**Engines:** 2

**Manufacturer:** Caterpillar

**Model:** 3208T

**Engine Type:** Inboard

**Fuel Type:** Diesel



---

# DETAILED INFORMATION

---

## Accommodations

---

Boarding is accomplished by stepping onto the wide gunwale and into the aft cockpit, to the aft is a transom door leading to the teak swim platform. Forward and up a few steps is the aft deck surrounded by a canvas enclosure with isinglass and table with chairs. This area when enclosed is air conditioned. A center aft bulkhead double door provides entry to the main salon, where there are two black leather barrel chairs (port and starboard sides), Tiger stripe carpeting, black leather sofa/sleeper on port side with end table, starboard side stairway providing private access to the Master Stateroom, forward in Main Salon is a black leather corner sofa with light tan granite dinette table. A 47" flat screen TV is mounted above the corner sofa with a pass thru between the TV and black Granite countertop. Forward is the U-shaped galley on the starboard side, complete with wood decking, beautiful hand rubbed satin finish teak cabinetry both above and below countertops, full size oven, microwave/convection, stove top, double deep stainless steel sinks, full sized two door stainless steel refrigerator with full sized freezer (pull out door) below. A passageway along the port side leads you to the pilothouse, a stairway to the port side of the galley refrigerator leads down to a main passageway to the VIP and Guest staterooms/heads. The VIP Stateroom has a queen berth, hand rubbed satin finish teak cabinetry, cedar lined hanging closet, cream colored carpeting, satellite TV/BluRay player, separate head with tile deck and enclosed tiled shower. The Guest Staterooms 1 and 2 both have hand rubbed satin finish teak cabinetry, cedar lined hanging closets, Cream colored carpeting, satellite TV/BluRay players and share a separate head (tile deck) and enclosed tiled shower. Returning to the Galley and taking the port side passageway forward to the Pilothouse reveals a professionally designed helm station with Garmin GPS/Chart Plotter/Depth/Radar, additional electronics, aids to navigation all in hand rubbed satin finish teak cabinetry and Tiger striped carpeting. On the aft starboard side of the Pilothouse is a black leather bench style seat with a high gloss wood table, the bench lays down into a double berth. Below the bench seat are two ice makers. The aft bulkhead is all hand rubbed satin finish teak. The Pilothouse has exit doors on both port and starboard sides, leading to the gunwales which allow access to the forward bow deck, bow cushioned sun lounging area or to the aft deck. Additionally inside the Pilothouse, there is a stairwell on the aft bulkhead which leads up to the flybridge and upper helm. The flybridge also has U-shaped seating from the upper helm on each port and starboard sides aft and turn in towards amidships, gray indoor/outdoor carpeting provide deck finish. A large high gloss wood dinette table is in the center providing dining for six. There are canvas covers for all seating areas, dinette table, Captains chair, and helm station when not in use. The entire flybridge is covered by a black canvas Bimini top with surrounding zip up isinglass. On the aft end of the U-shaped seating area is a walk thru leading to the aft upper deck where a dingy davit is located on the aft port side and a 12' Zodiac (40hp Yamaha outboard) is secured on this aft deck. Returning to the aft starboard side of the Main Salon, there is a stairwell leading down to the full beam Master Stateroom, complete with King size berth, surrounding hand rubbed satin finish teak wood cabinetry with granite countertops, Tiger striped carpeting, cedar lined hanging closet, flat screen satellite TV/BluRay player, separate spacious fully tiled head and separate

tiled shower.

---

## Salon

---

Sony 47" #D TV (2014) 6 Pair of 3D glasses Bose 321 Surround Sound System (2014) Sony 3D BlueRay Player (2014) Direct TV Satellite Box Dickinson Propane Fire Place (2005) Replaced Headliners (2005) Replaced Lighting (2005) Window Tinting (2010) Blinds (2010) Wall Covering (2010) Granite Counter Tops (2010) Ultra Leather couch folds out to double bed Two Ultra Leather barrel chairs with Ottomans Ultra Leather L-shaped dinette w/granite table top high low base Digital Control Panel HVAC (2005) KVH Track System

---

## Aft Deck

---

Fully enclosed Isinglass (2010) HVAC w/digital control panel (2005) Replaced lighting (2005) Replaced headliner (2005) Replaced granite table w/high low base (2010) 4 Teak Director chairs Carpet (2010) Garmin reverse camera

---

## Cockpit

---

Stainless Steel Sink Fresh water wash down 6' x 14' x 30" Lazerette storage space (2010) Florescence lighting in Lazerette (2010) 8 Dive tank holders Spare Danforth anchor w/chain Spare Propellers Bilge pump Propane locker w/2 tanks Dickinson Propane Grill Blue LED underwater lights (2015) Nonskid deck paint (2010) Teak swim platform New Stainless Steel swim platform trim (2015) Bottom Paint (2014) Stainless Steel rod holders Teak cap rails Cockpit lights Stainless Steel swim ladder

---

## Galley

---

New LG Stainless Steel 3 door Refrigerator/Freezer w/ice maker (2014) New GE Profile cook top (2014) New GE Profile Oven (2014) New GE Convection Oven/Microwave (2014) New Kenmore Stainless Steel Toaster (2014) New Kenmore Stainless Steel Coffee Maker (2014) Stainless Steel Sinks Granite Counter Tops Granite Backsplash (2014) New flooring (2014) Garbage Disposal (2005) Replaced Headliner (2005) Replaced Lighting (2005) Newmar Phone/Com (2005) Fire Extinguisher

---

## Pilothouse

---

Replaced Headliner (2005) Replaced Lighting (2005) Leather Wrapped Wheel (2005) Ultra Leather Couch w/Fold Out Double Bed Custom Chart Drawer Under Couch KVH Track System Removable Folding Teak Table (2015) 2 U-Line Ice Makers (2010) Cup Holders Storage Cabinet under seating (2010) Circuit Breaker Panel Halon Alarm (2010) Book Shelves New

Village Marine Water Maker Control Panel (2014) New Xantrex Control Panel (2014) Naiad Stabilizer Control Panel Pilothouse Light Dimmer New Side Deck & Back Deck Light Dimmer (2014) New Hands Free Satellite Telephone hand set and External Antennae (2014) New NewMar Telephone-Com (2014) New Icom IC-M504 VHF Radio (2014) New Clarion AM-FM CD Stereo System w/Remote (2014) New Flush Mount In-Dash iPad Holder/Charger (2014) 2 Flex Lights (2010) 2 New Garmin 7212 Touch Screen Chart Plotters (2014) New 15" QFX Flat Screen TV w/Remote (2014) New Satellite Telephone Speaker (2014) New Garmin Auto Pilot Control Panel (2014) New Garmin Auto Pilot Hand Held Remote (2014) New Garmin Depth Sounder (2014) New ACR Global Fix EPIRB (2014) New Sony HDMI DVD Player (2014) New Direct TV Satellite Box (2014) 4-110 volt outlets Weems & Plath Clock Weems & Plath Barometer Man Over Board Bag Flares Fire Extinguisher Standard Horizon Hand Held VHF Radio 3 Windshield Wipers New Garmin 4' Open Array Radar (2014) KVH Satellite System ACR Search Light Control Pad Hand Held Spot Light

## Master Stateroom

Separate Teak staircase with Teak handrail leading to Master Stateroom Storage cabinets with Granite countertops in stairwell (2010) Full length mirror in stairwell Replaced wall covering in stairwell (2010) King size bed (walk around) Replaced Wall Coverings (2010) Replaced Granite Countertops (2010) Replaced Window Treatments (2010) Bose 321 Surround Sound System (2010) Samsung 26" Flat Screen TV (2010) New Direct TV Satellite Box (2014) New Samsung Blue Ray Player (2014) 2 Cedar lined Closets Full length Mirror Replaced Ceiling escape Hatch (2010) 2 Lamps Replaced Headliners (2005) Replaced Lighting (2005) Spacious Storage KVH Track System Fire Extinguisher

## Fly Bridge

ACR Spotlight Control Pad New Garmin 4208 Chart Plotter (2014) New Standard Horizon DSC VHF Radio (2014) New Garmin Auto Pilot Control Pad (2014) New Naiad Stabilizer Control Pad (2014) New Clarion AM/FM CD Player (2014) New NewMar Telephone/Com (2014) High back helm chair w/cover (2005) Wrap around seating w/covers 2 large high low teak tables w/cover Rod Holders (2010) Dash Cover (2010) Carpeting Removed teak decks (2013) New Non-skid (2013) New Flybridge paint (2014/2015) Radar arch painted (2014) Revere Offshore Commander 6 person life raft 06/17/2014 Exp. Electric Davit w/kevlar line & new motor (2010) New (2)-500 watt flood lights (2014) Complete flybridge enclosure (2008) Bose & Sony stereo speakers New white/red radar arch lighting (2015) New (2) 5228 Shakespeare VHF Antennae's (2014) New 5230 Shakespeare Satellite Telephone Antennae (2014) Cup holder

## Deck Equipment

Bench seat w/cushions & cover Locker storage under seating New (2) 50 amp 125/250 volt 50' shore power cords (2014) New 5000 watt electric transformer to convert power (2014) Lewmar

3000 electric windlass w/charger (2005) Non skid paint fore & side deck (2011) Paint inside bulwarks (2011) Re-chromed scuppers (2011) Side deck lighting (2005) Stainless Steel Anchor w/300' of chain Fresh water wash down 100' hose Dock Lines (4) Stainless Steel fender holders (4) Fenders Stainless Steel railing

---

## Electronics

---

KVH Track System

New Icom IC-M504 VHF Radio (2014) New Clarion AM-FM CD Stereo System w/Remote (2014)

2 New Garmin 7212 Touch Screen Chart Plotters (2014)

New Garmin Auto Pilot Control Panel (2014) New Garmin Auto Pilot Hand Held Remote (2014) New Garmin Depth Sounder (2014) New ACR Global Fix EPIRB (2014) New Sony HDMI DVD Player (2014) New Direct TV Satellite Box (2014)

Standard Horizon Hand Held VHF Radio

New Garmin 4' Open Array Radar (2014) KVH Satellite System

New Garmin 4208 Chart Plotter (2014) New Standard Horizon DSC VHF Radio (2014) New Garmin Auto Pilot Control Pad (2014) New Naiad Stabilizer Control Pad (2014) New Clarion AM/FM CD Player (2014) New NewMar Telephone/Com (2014)

---

## Mechanical

---

Village Water Maker 750 Gallons Per Day

---

## Tenders

---

1998 12' Zodiac inflatable 2009 40hp Yamaha four stroke outboard motor (65 hours)

---

## Electrical Equipment

---

- Multi stage battery charger
- Engine start bank
- Generator start bank
- House bank (700 Amp hours)
- Start battery parallel
- (2) 15 KW Westerbeke generators
- in sound shields with remote starts

- Pro-Sine 3000 watt inverter/charger
- Smart voltage regulators
- New (2) 50 amp 125/250 volt 50' shore power cords (2014)
- New 5000 watt electric transformer to convert power (2014)
- Lewmar 3000 electric windlass w/charger (2005)

## Exclusions

---

Owner's personal belongings.

## Disclaimer

---

The Company offers the details of this vessel or yacht in good faith but cannot guarantee or warrant the accuracy of this information nor warrant the condition of the vessel. A buyer should instruct his representatives, agents, or his surveyors, to investigate such details as the buyer desires validated. This vessel or yacht is offered subject to prior sale, price change, or withdrawal without notice.

# PHOTOS

**Starboard bow**



**Canvas enclosure and radar arch**



**Starboard gunwale**



**Bow sun lounge**



**Port bow deck**



**Tender**



**Aft deck and aft cockpit**



**Aft deck**



**Lazarette**



**Lazarette**



**Main salon**



**Main salon**



**Main salon**



**Propane fire place**



**Main salon**



**Dinette**



**Granite dinette table**



**Main salon**





**Main salon**



**Main salon**



**Main salon**



**Main salon**



**Main salon**



**Main salon facing forward**



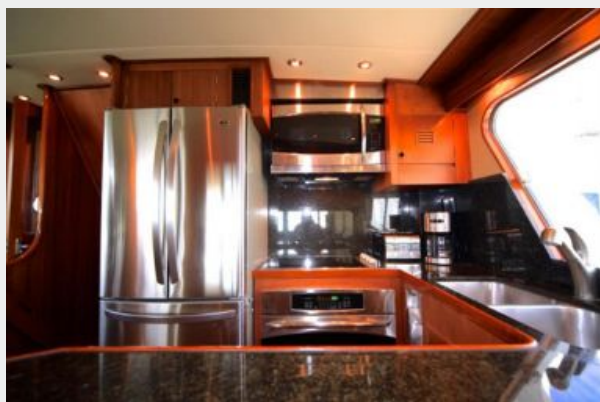
**Galley facing aft**



**Galley**



**Galley**



**Galley**



**Passageway leading to Pilothouse**



**Pilothouse facing aft in passageway**



**Pilothouse facing aft**



**Pilothouse**



**Pilothouse**



**Pilothouse**



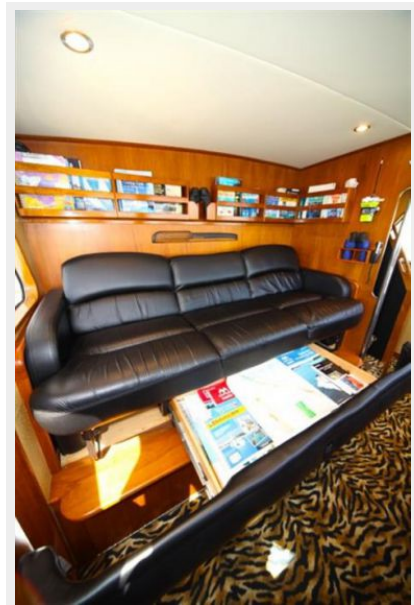
**Pilothouse**



**Pilothouse**



**Pilothouse**



**Pilothouse helm**



**Helm**



**Helm**



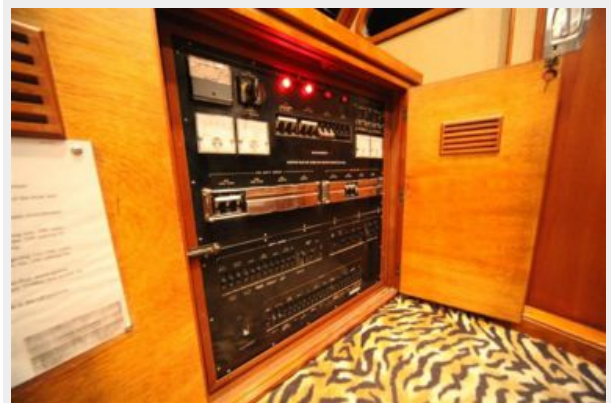
**Pilothouse helm**



**A/C D/C electric panel**



**A/C D/C electric panel**



**Flybridge hatch to Pilothouse**



**Flybridge helm**



**Radios**



**Flybridge helm**



**Flybridge seating**



**Flybridge seating**



**Flybridge seating**



**Flybridge canvas covers**



**Passageway leading to Guest/VIP staterooms**



**Guest stateroom 1**



**Guest stateroom 1**



**Guest stateroom 1**



**Guest stateroom 1**



**Washer/dryer**



**Guest head/shower**



**Guest head/shower**





**Guest head/shower**



**Guest head shower**



**Guest stateroom 2**



**Guest stateroom 2**



**Guest stateroom 2**



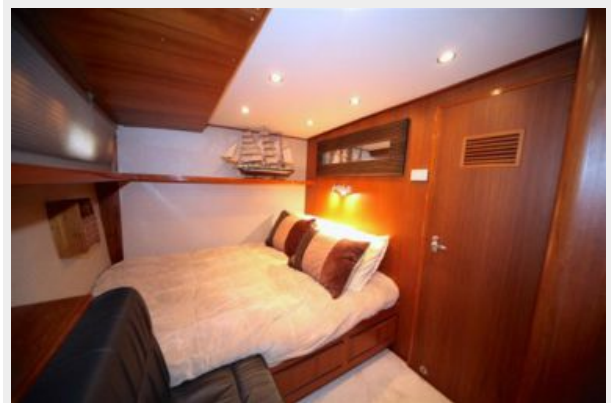
**VIP stateroom**



**VIP stateroom**



**VIP stateroom**



VIP head/shower



VIP head/shower



VIP head/shower



VIP shower



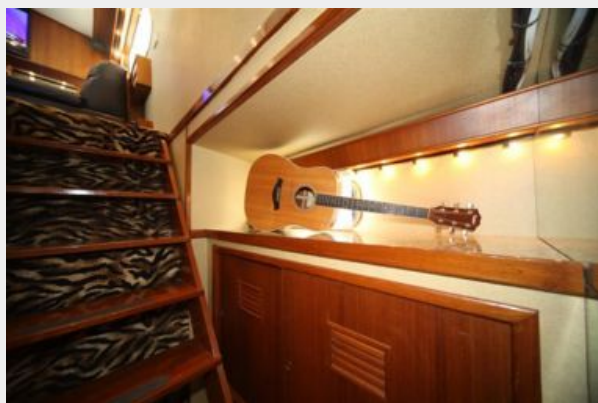
**Salon stairway to Master stateroom**



**Stairway to Master stateroom**



**Master stateroom**



**Master stateroom**



**Master stateroom**



**Master stateroom**



**Master stateroom**



**Master stateroom**



**Master closet**



**Master head/shower**



**Master head/shower**



**Master head/shower**



**Master shower**



**Engine room**



**Engine room**



**Engine room**



**Engine room**



**Engine room**



Haul out



Haul out



Haul out

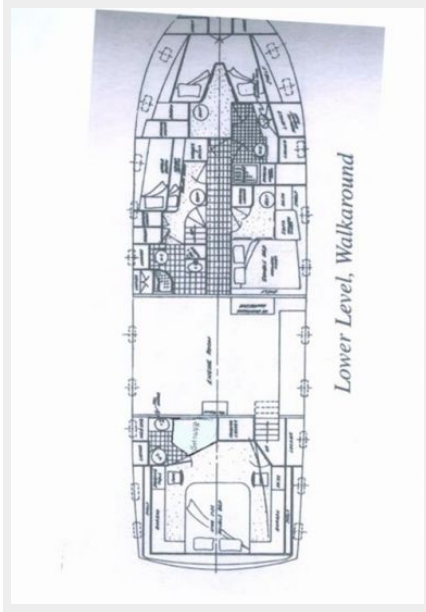


Haul out

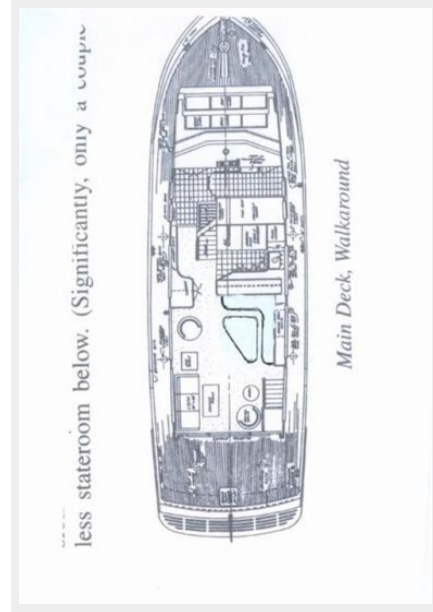




### Deck plan



### Deck plan



# CONTACTS

---

Andrey Shestakov, leading yacht broker of the sales department of Shestakov Yacht Sales Inc. Shestakov Yacht Sales Inc., the official representative of the Miami/Fort Lauderdale FL headquarters.

## Contact details

---

Email: [andrey@shestakovyachtsales.com](mailto:andrey@shestakovyachtsales.com)

Web: [shestakovyachtsales.com/en/](http://shestakovyachtsales.com/en/)

## Telephones

---

USA: +1(954)274-4435

## Office hours

---

Monday – Saturday: **9:00 - 21:00** EDT

Sunday: **closed**

## Address

---



Harbour Towne Marina, 850 NE 3rd St,  
STE 213, Dania, FL 33004