

AQUA DESIAC — SEA RAY



Builder: SEA RAY

Year Built: 2002

Model: Cruiser

Price: PRICE ON APPLICATION

Location: United States

LOA: 51' 0" (15.54m)

Beam: 15' 6" (4.72m)

Max Draft: 4' 4" (1.32m)

Our experienced yacht broker, Andrey Shestakov, will help you choose and buy a yacht that best suits your needs **Aqua Desiac — SEA RAY** from our catalogue. Presently, at Shestakov Yacht Sales Inc., we have a wide variety of yachts available on our sale's list. We also work in close contact with all the big yacht manufacturers from all over the world.

If you would like to buy a yacht **Aqua Desiac — SEA RAY** or would like help answering any questions concerning purchasing, selling or chartering a yacht, please call **+1(954)274-4435**

TABLE OF CONTENTS

TABLE OF CONTENTS	2
SPECIFICATIONS	6
Overview	6
Basic Information	6
Dimensions	6
Speed, Capacities and Weight	7
Accommodations	7
Hull and Deck Information	7
Engine Information	7
DETAILED INFORMATION	8
Overview	8
Manufacturer Provided Description	8
Engine Notes	8
Electronics & Equipment	8
Exclusions	9
Disclaimer	9
PHOTOS	10
Port stern	10
Starboard stern	10
Port	10
Gel	10
Gel 2	10
Transom	10
Nice canvas	11
Nice canvas 2	11
Nice canvas 3	11
Nice canvas 4	11
Aft cockpit	11

Aft cockpit 2	11
Aft cockpit 3	12
Nice vinyl	12
Wet bar	12
Ice maker	12
Cockpit fridge	12
Gen hours 754	12
Cockpit fridge 2	13
Light bezels in hardtop	13
Subwoofer	13
Helm companion seat	13
Helm seat	13
Newer cockpit carpet	13
Newer cockpit carpet 2	14
Helm	14
Chart/radar/vhf	14
Auto-pilot/Tridata	14
Steering wheel	14
668 hours	14
Bow sunpads	15
Anchor windlass/spotlight	15
Anchor rode access	15
Top shines/isinglass clear	15
Top shines	15
Salon	15
Galley	16
Salon 2	16
Salon 2	16
Galley 2	16

Coffee maker	16
Salon TV	16
Bose/AC panel	17
DC panel	17
Convection oven	17
3 burner electric stove	17
Galley fridge	17
Pull out sprayer	17
Guest head	18
Nice carpet	18
Guest stateroom entrance to head	18
Guest stateroom	18
Master stateroom	19
Master stateroom 2	19
Master stateroom 4	19
Master stateroom 3	19
Bow thruster housing	20
Master head	20
Master stateroom 5	20
Water manifold	20
Floor storage	20
Owners bag	20
Central Vac	21
Washer/dryer	21
Engine room	21
Engine room 2	21
Engine room 3	21
Engine room 4	21
Engine room 5	22

Engine room 6	22
Engine room 7	22
Power-cord retractors	22
Generator sound shield	22
Westerbeke, 15kw gen/754 hours	22
Oil change system	23
CONTACTS	24
Contact details	24
Telephones	24
Office hours	24
Address	24

SPECIFICATIONS

Overview

Preferred Cummins power!

This 02 Sea Ray 510 Sundancer is surely one of the finest ones you will find in Florida. The owner has taken great care of this vessel and has had it on a monthly service plan since he bought it new. The gel, cockpit vinyl, canvas, interior, & engine room all look exceptional for a 2002. This truly is a fine vessel and it is ready to take you on your next adventure today!

Key Features:

One owner. Serviced and cleaned on a monthly basis. Twin Cummins QSM-11s with 668 hours. (THE PREFERRED ENGINE OPTION). Westerbeke 15KW with 754 hours. Generator sound shield. Cockpit AC/heat. Bow thruster. Bose stereo DVD system in salon & master stateroom. Raymarine chart plotter/radar/auto-pilot/tridata. Windlass anchor. Spotlight. Bow sunpads. Upgraded carpet.

Basic Information

Category: Cruiser

Sub Category: Express

Model Year: 2002

Year Built: 2002

Country: United States

Cockpit: Yes

Dimensions

LOA: 51' 0" (15.54m)

Beam: 15' 6" (4.72m)

Max Draft: 4' 4" (1.32m)

MFG Length: 55' 0" (16.76m)

Speed, Capacities and Weight

Displacement: 38500 Pounds

Water Capacity: 150 Gallons

Holding Tank: 68 Gallons

Fuel Capacity: 600 Gallons

Accommodations

Total Cabins: 2

Total Berths: 6

Total Heads: 2

Hull and Deck Information

Hull Material: Fiberglass

Hull Configuration: Deep Vee

Engine Information

Engines: 2

Manufacturer: Cummins

Model: QSM-11

Engine Type: Inboard

Fuel Type: Diesel

DETAILED INFORMATION

Overview

Preferred Cummins power!

This 02 Sea Ray 510 Sundancer is surely one of the finest ones you will find in Florida. The owner has taken great care of this vessel and has had it on a monthly service plan since he bought it new. The gel, cockpit vinyl, canvas, interior, & engine room all look exceptional for a 2002. This truly is a fine vessel and it is ready to take you on your next adventure today!

Key Features:

One owner. Serviced and cleaned on a monthly basis. Twin Cummins QSM-11s with 668 hours. (THE PREFERRED ENGINE OPTION). Westerbeke 15KW with 754 hours. Generator sound shield. Cockpit AC/heat. Bow thruster. Bose stereo DVD system in salon & master stateroom. Raymarine chart plotter/radar/auto-pilot/tridata. Windlass anchor. Spotlight. Bow sunpads. Upgraded carpet.

Manufacturer Provided Description

The Sea Ray 510 Sundancer features a raised helm design that's seaworthy, superbly luxurious, and impeccably appointed. This boat remains prepared to provide the utmost comfort in a variety of aquatic environments and conditions.

Engine Notes

Caterpillar also available.

Electronics & Equipment

Electronics: Plotter - Ray RC530 Autopilot - Raymarine VCR CD player Radar - RL80C Compass - Richie Depthsounder VHF - Raymarine TV set - 3 Cockpit speakers Radio - Bose/Clarion **Inside Equipment:** Electric head Hot water Microwave oven - Convection Bow thruster Electric bilge pump Heating Washing machine Battery charger Refrigerator Air conditioning **Electrical Equipment:** Shore power inlet Generator - Kohler 15KW/754 hours Electrical Circuit: 240V **Outside Equipment/Extras:** Cockpit shower Tender Cockpit table Swimming ladder Cockpit cushions Electric windlass

Exclusions

Owner's personal belongings.

Disclaimer

The Company offers the details of this vessel or yacht in good faith but cannot guarantee or warrant the accuracy of this information nor warrant the condition of the vessel. A buyer should instruct his representatives, agents, or his surveyors, to investigate such details as the buyer desires validated. This vessel or yacht is offered subject to prior sale, price change, or withdrawal without notice.

PHOTOS

Port stern



Starboard stern



Port



Gel



Gel 2



Transom



Nice canvas



Nice canvas 2



Nice canvas 3



Nice canvas 4



Aft cockpit



Aft cockpit 2



Aft cockpit 3



Nice vinyl



Wet bar



Ice maker



Cockpit fridge



Gen hours 754



Cockpit fridge 2



Light bezels in hardtop



Subwoofer



Helm companion seat



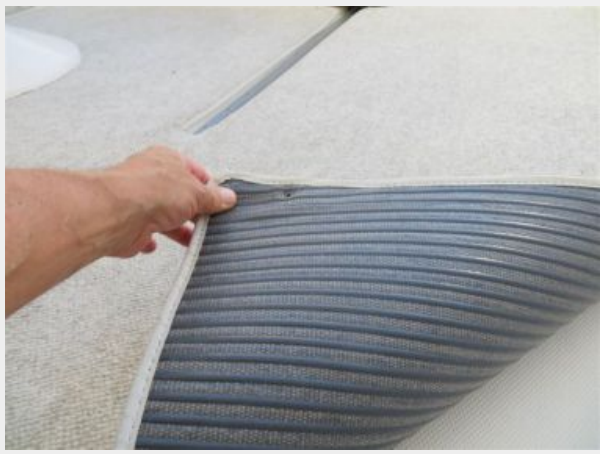
Helm seat



Newer cockpit carpet



Newer cockpit carpet 2



Helm



Chart/radar/vhf



Auto-pilot/Tridata



Steering wheel



668 hours



Bow sunpads



Anchor windlass/spotlight



Anchor rode access



Top shines/isinglass clear



Top shines



Salon



Galley



Salon 2



Salon 2



Galley 2



Coffee maker



Salon TV



Bose/AC panel



DC panel



Convection oven



3 burner electric stove



Galley fridge



Pull out sprayer



Nice carpet



Guest head



Guest stateroom entrance to head



Guest stateroom



Master stateroom



Master stateroom 2



Master stateroom 3



Master stateroom 4



Bow thruster housing



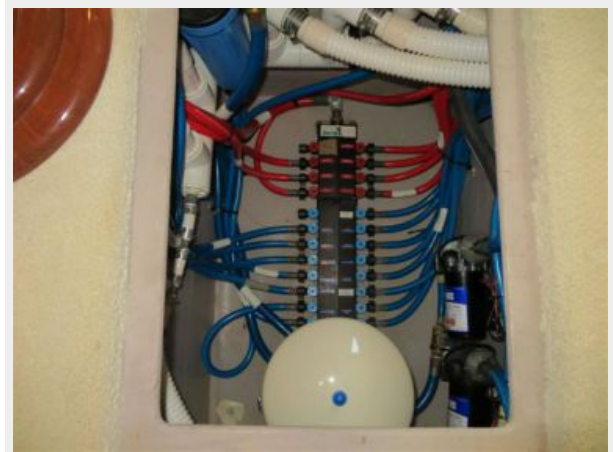
Master head



Master stateroom 5



Water manifold



Floor storage



Owners bag



Central Vac



Washer/dryer



Engine room



Engine room 2



Engine room 3



Engine room 4



Engine room 5



Engine room 6



Engine room 7



Power-cord retractors



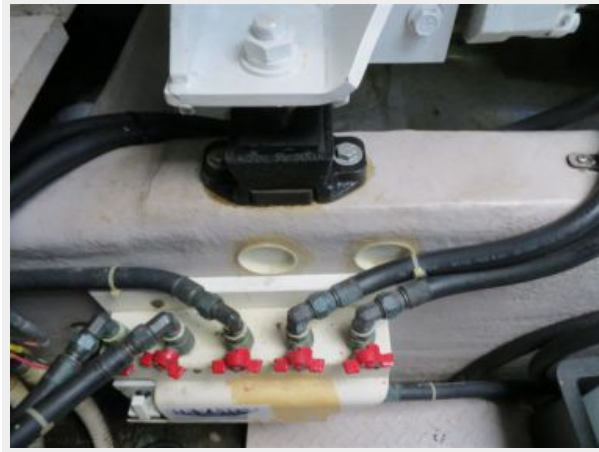
Generator sound shield



Westerbeke, 15kw gen/754 hours



Oil change system



CONTACTS

Andrey Shestakov, leading yacht broker of the sales department of Shestakov Yacht Sales Inc. Shestakov Yacht Sales Inc., the official representative of the Miami/Fort Lauderdale FL headquarters.

Contact details

Email: andrey@shestakovyachtsales.com

Web: shestakovyachtsales.com/en/

Telephones

USA: +1(954)274-4435

Office hours

Monday – Saturday: **9:00 - 21:00** EDT

Sunday: **closed**

Address



Harbour Towne Marina, 850 NE 3rd St,
STE 213, Dania, FL 33004