

## 360 — ISA YACHTS



**Судостроитель:** [ISA YACHTS](#)

**Год постройки:** 2003

**Модель:** Моторная яхта

**Цена:** **ЦЕНА ЯХТЫ ПО ЗАПРОСУ**

**Местонахождение:** France

**Длина общая:** 155' 11" (47.50m)

**Ширина:** 29' 3" (8.90m)

**Мин. осадка:** 7' 11" (2.40m)

**Макс. осадка:** 8' 11" (2.70m)

**Крейс. скорость:** 13 Kts. (15 MPH)

**Макс. скорость:** 16 Kts. (18 MPH)

Купить 360 — ISA YACHTS а также выбрать подходящую вам яхту из нашего каталога яхт вам поможет опытный яхтенный брокер Андрей Шестаков. На сегодняшний день компания Shestakov Yacht Sales Inc. имеет большое количество яхт в собственном списке продаж, а также тесно сотрудничает со всеми крупными яхтенными производителями по всему миру.

Для того чтобы купить яхту 360 — ISA YACHTS а также проконсультироваться по любому вопросу связанному с покупкой, продажей, чартером яхт позвоните по телефону **+7(918)465-66-44**.

# ОГЛАВЛЕНИЕ

---

ОГЛАВЛЕНИЕ	2
ХАРАКТЕРИСТИКИ	4
Обзор	4
Основная информация	4
Размеры	4
Скорость, вместимость и масса	4
Размещение	5
Корпус и палуба	5
Информация о двигателе	5
ПОДРОБНОЕ ОПИСАНИЕ	6
Vessel walkthrough	6
Accommodation	6
Capacities	7
Communications and navigational equipment	7
Mechanical, propulsion and engine room equipment	7
Galley, domestic and laundry equipment	8
A/V equipment	8
Deck Equipment	8
Safety and security equipment	9
Tender and toys	9
Refit comments	9
Исключения	9
Отказ от ответственности	10
ФОТОГРАФИИ	11
КОНТАКТЫ	16
Контактная информация	16
Телефоны	16
Время работы	16

---

Адрес

16

# ХАРАКТЕРИСТИКИ

## Обзор

MY 360°, (ex-SONKA and APRIL FOOL) is well known to many as a yacht providing top level service combined with a cruising experience of refined luxury. The three spacious aft decks offer a host of opportunities for alfresco living with open seating, lounging and dining areas located across the decks. While the vast sundeck with its Jacuzzi pool and luxurious sun-lounging areas offer the ultimate space for recreation, the upper salon will allow guests to relax and enjoy the on-board entertainment system.

## Основная информация

**Тип судна:** Моторная яхта

**Модельный год:** 2003

**Год постройки:** 2003

**Год обновления:** 2013

**Страна:** France

## Размеры

**Длина общая:** 155' 11" (47.50m)

**Ширина:** 29' 3" (8.90m)

**Мин. осадка:** 7' 11" (2.40m)

**Макс. осадка:** 8' 11" (2.70m)

## Скорость, вместимость и масса

**Крейс. скорость:** 13 Kts. (15 MPH)

**Макс. скорость:** 16 Kts. (18 MPH)

**Чистый вес:** 498 Pounds

**Вместимость воды:** 3962.58078 Gallons

**Объем топливного бака:** 19548.731848  
Gallons

## Размещение

---

**Всего кают:** 5

**Спальные места:** 10

**Каюта капитана:** Да

**Спальных мест экипажа:** 9

## Корпус и палуба

---

**Материал корпуса:** Steel

## Информация о двигателе

---

**Двигатели:** 2

**Производитель:** MTU

**Модель:** 12V 4000 M70

# ПОДРОБНОЕ ОПИСАНИЕ

## Vessel walkthrough

**Main deck** The Main aft deck offers a very large surface, a table for 8 and a direct access to the upper level thanks to the 2 lateral staircases which have made the success of the ISA design. Inside, the main deck offers one large area which includes both the main saloon and the dining saloon. The saloon is full beam and large windows allow plenty of light to shine on the Cherry, Wenge and timber woods. 10 guests can sit comfortably in the sofas and chairs and the round table extends to 10 also. A large screen LCD HD TV connected to a complete entertainment system is located on the port side. Moving further towards the bow, is possible to access to the 4 guests cabins located on the lower deck or to the upper saloon using a central staircase. It features a guest day head and the main galley. The well-appointed main deck owner's suite, features an en-suite bathroom and study. The study offers a large desk on starboard and leads into the main part of the cabin with a king size bed, walk-in closet and access to the bathroom. The owner's bathroom is very spacious and offers a Runner with LCD TV, a large American shower, a sauna, a bath, vanity mirror and 2 sinks. The bathroom is very nicely decorated with Onyx and red carpet. The aft main deck offers an outside dining table for 8 with an access to the saloon or to the upper decks using two beautifully designed staircases. **Lower deck** The lower deck accommodates four guest staterooms, two VIP and two Twin cabins, all en-suite. The same meticulous attention to detail we have found in the Master Cabin has been maintained to ensure the highest standards of luxury and elegance. **Upper deck** From the aft balcony on the upper deck, two sliding doors open to the upper lounge. This area features a design sofa where can seat comfortably 3 persons and 4 armchairs. The chimney, placed in front of this conversation space, add a bit of cosy and intimate atmosphere. On the port side is a small desk with computer facilities. On starboard is the access to the day head, bridge and staircase to the lower levels. On the right side of the corridor the large pantry features a 100 plus bottle wine cellar, espresso coffee machine, fridges and more. The bridge is located on the upper deck and offers state-of-the-art navigation equipment. Featuring unusual red sofa and pilot seats, it is also a very nice area to enjoy the crossings and sharing the navigation's experience. **Sundeck** The flybridge offers a unique panorama where the guest can be delighted from the cool breeze under a large Bimini. The Jacuzzi bath is surrounded by sun bathing cushions and features a large table for 10.

## Accommodation

Full width double master cabin with bathroom en-suite with separate shower and sauna  
 1 x Full width double VIP cabin with shower en-suite  
 1 x Full width double cabin and shower room en-suite  
 2 x Twin cabins with shower rooms en suite  
**Crew** Captain's double cabin with shower room en-suite  
 4 x Twin upper & lower berth cabins with shower rooms en-suite

## Capacities

340 litres/ hour @ cruising speed (engines + generators) 2,700 nm @ 13 knots Fuel: 74,000 litres / 19,549 US gallons in 12 tanks Fresh water: 15,000 litres / 3,963 US gallons in 2 tanks Lube oil: 1,150 litres /304 US gallons in 1 x tank Dirty lube oil: 990 litres /262 US gallons in 1 x tank Grey & black water: 11,110 litres /2,935 US gallons in 3 x tanks Sludge: 800 litres /211 US gallons in 1 x tank Bilge: 3,600 litres /951 US gallons in 1 x tank

## Communications and navigational equipment

Magnetic compass: 1 x Jupiter Gyro compass: 1 x Sperry Navigat X MK1 Automatic pilot: Sperry Marine-Navi Pilot 4000 Radar: 1 x Furuno, 1 x FAR 2127 B X - Band 25kW, 1 x FAR2137 S-BAND 30kW Transponder: 2 x SART ACR AIS: Furuno DGPS: 1 x Furuno GP150 (Wheel Mark) GPS: 1 x Furuno Chart plotter: 2 x Transas sailor 4000/ paperless NAVTEX: Furuno GP-37 (Wheel Mark) Chart plotter: 2 x Full ECDIS- Transas sailor 4000/ paperless NAVTEX: Furuno NX 700A + printer (Wheel Mark) Weather fax: 1 x Furuno FAX 30 Log: 1 x Sperry Naviknot 350E Wind instruments: 1 x B&G H3000 pack Hydra + 4x 3000GHD + BGH23 Analogic Wind Speed & Direction Indicators Echo sounder: 1 x Furuno FE 700 (Wheel Mark), 1 x Furuno FCV 1200L SATCOM: Inmarsat-C/ Furuno Felcom 18 +SSAS+LRIT Sat connection: KVH Fleet V7 Scansat: LRIT T&T 30272LT Radio tel: MF/HF Furuno- FS1570 150W (Wheel Mark) VHF/DSC Furuno-FM8900 25W Classe A (Wheel Mark) VHF/DSC Raymarine RAY 240E Loundhailer: Furuno LH3000 Landline/intercomm: PABX Panasonic

## Mechanical, propulsion and engine room equipment

2 x 2,340Hp MTU 12V4000M 70-1740kW/2,000 rpm each (2,720 hour as of August 2015) Gearbox: 2 x ZF type 7540 reverse reduction with a ratio of 4.208:1 Propellers: 2 x Heliche Radiche 69"/175cm diametre with mechanically salt water lubricated 5.9"/15cm diametre shafts and Profiseal Sterntube seal Steering system: Marsili type CL.B-401/4n electro-hydraulic system with 2 pumps and emergency back-up (remote and local) Bow thruster: 118hp (88kW) Rodriquez Marine Systems electric type TMS 100E with 20"/51cm diametre Stern thruster: 60kW Rodriquez Marine Systems Hydraulic type TMS 050H with 20"/51cm diametre Stabilisers: Rodriquez Marine Systems type SMS 2200 hydraulic "zero speed/at anchor" stabilisers with 21.53ft<sup>2</sup>/2.0m<sup>2</sup> fins with Allen & Bradley monitors Generators: 2 x Kohler 125EFOZD, 125kW each (4,850 as of August 2015) Emergency generator: 1 x 55kW (@ 1,500rpm) Kohler type 55EF0Z Gen-Kleen exhaust filtration system Electricity: 380V/220V AC, 50Hz, 3-phase; 24V DC Shore power: 380V/110V AC, 50/60Hz, 3-phase/mono phase Batteries: 7 x Sets of Exide Nautilus 12V DC batteries for main & generator start (including emergency generator), emergency lighting, engine control room, GMDSS/radio back-up and UPS 2 x Custom built battery chargers (E.R. & wheelhouse) Asea shore power converter 440V-110V AC, 60Hz-50Hz 2 x Hydromar type IBM5 Duplex with sand, UV & carbon filters, water softeners and silver sterilisation – producing approx. 4,800 litres (1268 USG) per day each Fuel separator and filters: 1 x Alfa Laval type MMPX 403 SGP-11 with approx. 1,250 litres (330 US gallons) per hour capacity 2 x SWK type

2000/40/UMS in line filters (each main engine) 2 x SWK type 200/5/UMK in line filters (each main generator plus emergency generator) Oil/water separator: DVZ type 500VC "Oilmaster" with 500 litres (132 US gallons) per hour capacity Fire/bilge pump: 2 x Gabarino type IA3/140 bilge pumps (main & emergency) w/ 30,000 litres (7,925 US gallons) per hour 2 x ABS Robuston type 300T/S garage door bilge pumps with 10,800 litres (2,853 US gallons) per hour capacity Gianneschi & Ramacciotti tender garage bilge pump with 10,800 litres (2,853 US gallons) per hour capacity 2 x Gabarino type MU32/160A fire pumps (main & emergency) with 30,000 litres (7,925 US gallons) per hour capacity (All main & emergency bilge/fire pumps are interchangeable – dual function) 2 x Gianneschi & Ramacciotti type 300 boilers with 2 x 3kW heating elements each & 300 litres/80 USG each Sewage treatment: Hamann Wassertechnik HL-CONT treatment system w/ 24,000 litres (6,340 US gallons) per day Jets vacuum fresh water flush WC system Airconditioning: N.R. Koeling chilled water/reverse cycle system with 2 x compressors, 23 x fan coil units throughout, fresh air unit and thermostat controls throughout

## Galley, domestic and laundry equipment

1 x Miele Dishwasher 2 x Large freezers 1 x Large refrigerator in-walk in cold room 1 x Hoshizaki Icemaker 1 x Miele microwave 1 x Oven Angelo Po Fryer / Electrical stove stop/ induction stove pop/ Grill top smooth plate 1 x Refrigerator 2 x Sliding drawers **Laundry** 2 x Miele Washing machines (1 in laundry, 1 in garage ) 2 x Miele Dryer machine + 1 in garage **Pantry sundeck** 2 x Icemaker 3 x Bar fridge 1 x Dishwasher Miele 2 x Wine cooler Euro cave

## A/V equipment

**Main salon** Samsung TV Sky receiver + RTI remote DVD blue ray LG IPod docking station Onyco Amplifer Samsung phone intercom **Skylounge** Samsung plasma TV Sky receiver + RTI remote DVD blue ray Samsung IPod docking station Onyco Amplifer Samsung phone intercom **Master cabin** Samsung TV DVD blue ray LG IPod docking station Onyco Amplifer Samsung phone intercom **Master private lounge** Samsung TV DVD blue ray LG IPod docking station Samsung phone intercom **Guest cabins** Samsung TV DVD blue ray LG IPod docking station Samsung phone intercom **Crew mess & Captain's cabin** Samsung TV DVD blue ray LG DVD blue ray Samsung in captain's cabin IPod docking station Samsung phone intercom **Other** RTI Entertainment system throughout the yacht KVH M9 x 2 SAT.TV

## Deck Equipment

Anchor windlass: 2 x Maxwell VWC-11000 electric Aft warping capstans: 2 x Maxwell Winches VC-6000 Anchors: 2 x 695lb/315Kg Pool type HHP galvanised Anchor chains: 2 x 5.5 shackles/495ft/151m x 19mm galvanised cable (NB: first ½ shackle/45ft/13.7m is stainless steel) Boat crane & davits: Motomar 23ft/7m hydraulic crane (foredeck) with 2,646lb/1,200kg SWL @ Bow Motomar custom made hydraulic gantry beam (in garage) with 2,205lb/1,000kg SWL Passerelle: Cramm 13ft/4m hydraulic with 1.6ft/0.5m extension Side boarding ladder: Motomar



hydraulic side boarding ladder Pool/Jacuzzi: Hydro Spa – 4 pebble on sun deck aft Swimming platform: Teak laid integral swimming platform w/ lazarette entry Deck furniture: Tables, loungers, chairs and sun cushions Searchlights: The Carlisle & Winch Company 15 million candle power remote controlled searchlight

## Safety and security equipment

4 x Zodiac life rafts for 8 people 1 x Zodiac raft for 6 people on sundeck 25x Ocean rated PFD 22 x Immersion suits 2 x Life rings with smoke and light 2 x Life rings with 30m line 1 x Floating EPIRBS (GMDSS) + 1 x spare 1 x SART + 1 x spare 2 x Safety harness **Security** CCTV system Panasonic CCTV system BNWA/AMI watch keeper 1 x FLIR day & night camera 1 x SWP security alert system Fire alarms Heat alarms **Fire fighting** 28 x Dry powder fire extinguishers ABC rated 2 x CO2 FM 200 fixed system in engine room and garage Fixed pump with various outlets 2 x BA sets and fireman outfits 2 x Air tanks

## Tender and toys

1 x Novurania 5.30 DL with 190 HP inboard engine (9 seats) 1 x Novurania 400TR outboard 40Hp **Water sports** 2 x Waverunners Seadoo RXP 255 Hp 1 x Kayak 2 x Wake boards 1 x Kneeboard 2 x Doughnuts, 1 for 2 people + 1 for 4 people 1 x 4 people banana 2 x Bicycles **Diving** 2 x Sets of Diving gear Dive compressor

## Refit comments

Thanks to a steady upkeep and two extensive refits between the 2010 and 2013, MY 360° looks as a brand new yacht. Her owner has in fact not spared any effort to maintain her to the highest standards. In 2010 a general renovation has included the total new exterior painting, new interior decoration and design, new furniture and cushions throughout, complete new bridge and navigation system (cameras, GPS, steering, radio, radar...), the stabilizers were doubled in size making the yacht very stable both at sea and at anchor. All the services on the engines have been performed successfully and the yacht has been provided with high speed Internet WiFi. The last refit, occurred between the winter 2012 and the spring 2013, has instead included the latest navigation and audio/video instruments updates, a new fire protection system, a full restoration of the machinery and the hull, updating of the water toys selection, new carpets and furnishing. Yacht is virtually new: built in 2003, she was totally refitted in 2010 and 2013. · Eclectic and contemporary design with a "Boutique Hotel" atmosphere · Young, dynamic and International crew · Zero-speed stabilization · Many water sport activities · Deck Jacuzzi · Unique exterior design

## Исключения

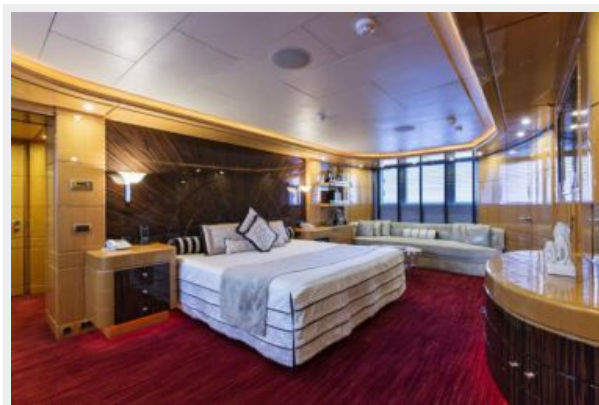
При продаже яхты исключаются личные вещи владельца.

## Отказ от ответственности

---

Компания предоставляет описание судна или яхты добросовестно, но не может гарантировать точность этой информации, а также не ручается за техническое состояние. Покупатель должен проинструктировать своих агентов или оценщиков исследовать представленную информацию более подробно, по собственному желанию. Продажа судна или яхты, изменение цены или снятие с продажи будет происходить без предварительного уведомления.

# ФОТОГРАФИИ













# КОНТАКТЫ

---

Андрей Шестаков (Andrey Shestakov) – ведущий яхтенный брокер отдела продаж яхт и судов компании Shestakov Yacht Sales Inc. Официальный представитель Shestakov Yacht Sales Inc. для русскоговорящих клиентов в центральном офисе компании в Майами/Форт Лодердейл/Флорида/США.

## Контактная информация

---

Email: [andrey@shestakovyachtsales.com](mailto:andrey@shestakovyachtsales.com)

Web: [shestakovyachtsales.com](http://shestakovyachtsales.com)

## Телефоны

---

Краснодарский край: **+7(918)465-66-44**

США, Майами, Флорида: **+1(954)274-4435**

## Время работы

---

Понедельник – Суббота: **9:00 - 21:00**  
EDT

Воскресенье: **Закрито**

## Адрес

---



Harbour Towne Marina, 850 NE 3rd St,  
STE 213, Dania, FL 33004