

## 2012 FERRETTI 830HT — FERRETTI



**Судостроитель:** [FERRETTI](#)

**Год постройки:** 2011

**Модель:** Моторная яхта

**Цена:** **ЦЕНА ЯХТЫ ПО ЗАПРОСУ**

**Местонахождение:** United States

**Длина общая:** 83' 0" (25.30m)

**Ширина:** 20' 6" (6.25m)

**Мин. осадка:** 6' 0" (1.83m)

**Крейс. скорость:** 30 Kts. (35 MPH)

Купить 2012 FERRETTI 830HT — FERRETTI а также выбрать подходящую вам яхту из нашего каталога яхт вам поможет опытный яхтенный брокер Андрей Шестаков. На сегодняшний день компания Shestakov Yacht Sales Inc. имеет большое количество яхт в собственном списке продаж, а также тесно сотрудничает со всеми крупными яхтенными производителями по всему миру.

Для того чтобы купить яхту 2012 FERRETTI 830HT — FERRETTI а также проконсультироваться по любому вопросу связанному с покупкой, продажей, чартером яхт позвоните по телефону **+7(918)465-66-44**.

# ОГЛАВЛЕНИЕ

ОГЛАВЛЕНИЕ	2
ХАРАКТЕРИСТИКИ	4
Обзор	4
Основная информация	4
Размеры	4
Скорость, вместимость и масса	4
Размещение	4
Корпус и палуба	5
Информация о двигателе	5
ПОДРОБНОЕ ОПИСАНИЕ	6
Please Visit	6
Introduction	6
Hull & Deck Equipment	6
Electronics	7
Flybridge	7
Salon	7
Day Head	8
Dining	8
Galley	8
Lobby	8
Bridge	8
Master Stateroom	9
Master Bathroom	9
VIP Guest Cabin at Bow	9
Starboard Guest Stateroom	9
Port Guest Stateroom	9
Guest & VIP Bathrooms	10
Crew Quarters	10

---

Crew Bathroom	10
Crew Lounge	10
Equipment	10
Engine & Mechanical Equipment	11
Systems Compartment	11
Forepeak	11
Исключения	11
Отказ от ответственности	11
<b>ФОТОГРАФИИ</b>	<b>12</b>
<b>КОНТАКТЫ</b>	<b>18</b>
Контактная информация	18
Телефоны	18
Время работы	18
Адрес	18

# ХАРАКТЕРИСТИКИ

## Обзор

### Основная информация

Тип судна: Моторная яхта	Модельный год: 2012
Год постройки: 2011	Страна: United States
Верх: Hardtop	Открытая палуба мостика: Да

### Размеры

Длина общая: 83' 0" (25.30m)	Ширина: 20' 6" (6.25m)
Мин. осадка: 6' 0" (1.83m)	

### Скорость, вместимость и масса

Крейс. скорость: 30 Kts. (35 MPH)	Вместимость воды: 349 Gallons
Объем топливного бака: 1955 Gallons	

### Размещение

Всего кают: 4	Всего коек: 5
Спальные места: 8	Всего ком. состава: 5
Каюта капитана: Да	Каюты экипажа: 2
Койки экипажа: 4	Спальных мест экипажа: 3
Комм. состав экипажа: 1	

## Корпус и палуба

---

**Материал корпуса:** Fiberglass

**Материал палубы:** Teak

**Цвет корпуса:** White

**Дизайнер корпуса:** Ferretti

**Дизайнер экстерьера:** Zuccon International Project

**Дизайнер интерьера:** Zuccon International Project

## Информация о двигателе

---

**Двигатели:** 2

**Производитель:** MTU

**Модель:** 12V 2000 M94 1948 mhp

**Тип топлива:** Diesel

# ПОДРОБНОЕ ОПИСАНИЕ

---

## Please Visit

---

CLUB M will be located on Ramp 17 in the Miami Beach Boat Show on Collins Ave. "Please visit the CLUB M website at [CLUBM-yacht.com](http://CLUBM-yacht.com) for improved yacht photography, specifications, details, broker friendly brochure etc."

## Introduction

---

The immaculate and sleek CLUB M presents buyers with a rare opportunity to purchase the only late model from the hugely desirable Ferretti 830 HT series available on the brokerage market.

CLUB M's warm 'beach club' theme is carried throughout her interior and exterior. She has been beautifully kept in exceptional condition by her experienced crew and Owner since new.

CLUB M's sleek profile and design are why Ferretti Yachts have earned a reputation in the yachting industry as the most striking yachts on the market. Her contemporary décor and large windows throughout not only add to the airy beach club feel, but also offer stunning vistas out to sea.

Heavily equipped with continuous upgrades and improvements, CLUB M is a motor yacht with plenty of advanced offerings, including an impressive hydraulic beach club area and a retractable hard top on her flybridge, as well as an extensive Atlas shore power converter application for worldwide cruising.

CLUB M sleeps eights in four comfortable staterooms, comprising a luxurious master cabin with marble en-suite and massive full height windows, a generous VIP, two twin-bedded staterooms and a uniquely large separate crew quarters and crew mess aft.

## Hull & Deck Equipment

---

Mesh shades for windshield and sides; aft cockpit couch shade (2014) Full side rain enclosure for aft deck from the factory Foot step lights for path to flybridge led Teak chairs for aft teak dining table (2013) Canvas cover for aft deck couch 203Vshore line cable mt. 100' Access to swim platform through fixed stairs, steps in teak & stainless steel handrail Aft sliding door in stainless steel Anchors Bruce (1kg. 50-1kg.30) w/ 2 chains (mt. 100 & mt. 75) w/ washing Atlas universal electric system 2 Boat hooks housed Bow pulpit w/ side rails Bow roller Canopies for protection of the side & front windows in the bridge Chain washing Chock for hauling out at stern & lateral roller chock Cleats mid ship (3 each side) Cockpit lights Cushions w/ backrest for cockpit benches Electrohydraulic telescopic gangway in stainless steel & teak w/ remote control Extendible teak cockpit table w/ storage for chairs External acoustic alarm for bilge water level fore & aft Fenders (10) and spherical fenders (2) Foot-controlled capstans (2) w/ switch (700W)

Fully fitted stern seat w/ lockers & sink w/ hot/cold salt water Garage at stern w/ hydraulic hatch & storage for Jet Ski open to "beach" setting Horn w/ compressor Hydraulic bow thruster (40HP) Hydraulic stern thruster Ice maker in the cockpit under the stairs for the fly Indirect deck lighting Mooring lines (4) of mt. 12 Navigation lights Perimetrical curtain rod for canopies Remote shut off for engines & generator fuel hoses Salt-water outlet at transom, in the forepeak & in the galley Shower w/ hot/cold water Sliding side exit doors (2) w/ manual movement Solid teak deck surface and cockpit floor Stainless steel deck equipment Stainless steel hardware Stereo loudspeakers (4) in cockpit Stern thruster Storage w/ door in the cockpit Sunlounge pad at bow w/ sunbathing cushions Windshield w/ stainless steel frames & glued windows Yacht controller for easy docking (2015) Control Station in aft cockpit

## Electronics

Sat TV in Captains quarters with chart plotter mirroring and anchor watch alarm (2013) Cradle Point 2100 dual router quad sim cellular WiFi cradle with Bullet wifi amp (2014) Bose Lifestyle 6 zone stereo - 4 speakers on FB, 4 in the cockpit, 2 in the garage salon, 6 in the salon Blue tooth connectivity Apple TV Seamphony Mass storage video and audio library (2013) Garmin 7215 touchscreen plotter on FB Furuno Nav Net 3D Flir night vision Multiple onboard cameras on FB and wheel house screen monitors and on the internet. (2013) Yacht controller for remote operation (2014)

## Flybridge

Hard top with retractable top 3 piece sunshade from hard top (2015) Eisen Glass ez2cy panels for wind screen (2013) Full enclosure factory Ferretti canvas ferrari Stereo CD w/ watertight panel & 2 loudspeakers Bose Lifestyle system Cigarette lighter outlet 12V Cocktail cabinet w/ sink, fridge, electric cooking top 230v & lockers Cover for helmsman seat, bench & coach Detachable & directable spotlight Electrical operated fully directable forward searchlight Electrohydraulic davit for lifting & launching of inflatable tender from Fly & lazarette (capacity load kg. 600) Electrohydraulic powered steering Electronic compass Raytheon ST60 Electronic controls for engine clutch and throttle Electronic digital chain counter Fiberglass radar arch Flag pole Flagstaff Helmsman bench seat (2 seats) Housed life ring, light buoy 7 floating rope Life jackets (16) Life rafts for 16 people Lights on the fly Plexiglas & stainless front deflector with side panels Removable railings for deck/tender load area (2013) Raymarine E-120 GPS/ Plotter Garmin 7215 touchscreen plotter Rudder angle indicator Salon and cockpit stairs skylight Second control station w/ instrument and alarms Sunlounge pad with sunbathing cushions Tridata Raytheon ST60 repeater (Depth sounder, speed log & water temperature) TV antenna U-shaped sofa w/ table VHF Custom stainless steel railing Flir control station

## Salon

Aft sliding door & window, both w/ stainless steel frames Wine Cooler w/ drawer 75 lt. 24V Dolby

Surround sound Hi-Fi Bose Lifestyle 28 Digital w/ 6 speakers Ipod docking station Beautiful wide plank cherry wood floor Custom silk area rugs Headlining Leather armchair Custom leather sofa (2013) Wine cooler drawer and wine cooler cabinet Table in leather w/ wooden tray TV LCD Various cabinets, housing TV w/ bottle rack Electric roman shades on starboard & port windows Electric curtain on aft door

---

## Day Head

---

Electric ceramic WC (w/ fresh water) Floor in teak, mat painted Mirror Overhead lockers and shelves Plisse curtains Washbasin w/ marble countertop

---

## Dining

---

Cabinets w/ shelves Chairs (8) Table

---

## Galley

---

Ceramic cooking top w/ 4 rings & pan-holder Complete set of ceramic crockery & plates, glasses & stainless steel cutlery, for 12 people Cupboards Miele Dishwasher Easy clean walls Electric/microwave oven Electrical panel Extractor fan ducted externally (220V) Fridge lt. 276 & freezer lt. 74 230V (24through inverter) Garbage compactor Granite work counter w/ 2 sinks and draining board Lacquered headlining Overhead lockers Sliding side exit door w/ manual movement Stereo and 2 speakers

---

## Lobby

---

Cabinet w/ shelves Cherry wood floor Sliding side exit door w/ manual movement Stairs to the fly Security cameras control panels with 5 cameras

---

## Bridge

---

Automatic pilot Raytheon ST7001 + w/ interface Barometer, clock & hygromometer Chart/Plotter Geonav LCD colour 15 in. w/ GPS Cigarette lighter outlet 12V Control station w/ full instrumentation C-shaped sofa w/ table Ecosounder colour in Navnet monitor display Electrohydraulic powered steering Electronic controls for engine clutch & throttle Electronic digital chain counter Wood floor Helmsman seat Instant parallel battery Integrated system for managing and monitoring of the electric system (NAVIOP) w/ 15 in. touch screen display Magnetical compass Openable windows (2) Maptech GPS/ Plotter Raymarine E-120 GPS/ Plotter with repaeter on Flybridge Radar 48 miles w/ display LCD 15 in. Rudder angle indicator



Switchboard Telephone interface GSM/GPRS/FAX/PCDATA Tridata Raytheon ST60 (Depth sounder, speed Log, & water temperature) VHF Windshield wipers w/ washers (2) & timer

## Master Stateroom

---

Bedside tables (2) w/ drawers Book shelf Chaise lounge Electric curtains w/ wrinkled finish Electric blackout curtain King sized bed w/ mattress, pillows & bedspread Drawers underneath the bed Dressing-table w/ chair Electric blinds in glass partition in bedhead b/n cabin & bathroom Huge fixed window w/ 2 openable portholes in stainless steel w/ roll-up covers Fully fitted carpet Headlining LCD colour TV Bose surround system with X speakers and iPod docking station. Mirrors (2) Reading lights Safe deposit box Ventilation under the bed Walk-in wardrobes (2) Custom leather cushions along bench

## Master Bathroom

---

Ceramic bidet Electric ceramic WC (w/ fresh water) Floor in teak Mirrors Overhead lockers & shelves Plisse curtains Porthole Washbasins (2) w/ marble countertop

**Master Bathroom Area:** Huge double size shower with custom mosaic 2 rain heads Huge Fixed window with roll down curtains

## VIP Guest Cabin at Bow

---

Leather stool on the right Cabinets Car-Stereo CD w/ 2 loudspeakers Chest of drawers Queen sized bed w/ mattress, pillows & bedspread Skylight window Fully fitted carpet Headboard mirror over bed Headlining Mirrors (2) Plisse curtains Reading lights Safe deposit box Stainless steel openable portholes (2) w/ covers Storage underneath bed TV Vanity furniture w/ chair on the left Ventilation under bed Walk-in wardrobe

## Starboard Guest Stateroom

---

Full sized bed w/ mattresses, pillows & bedspreads Car-stereo CD w/ 2 loudspeakers Chests of drawers (2) Fully fitted carpets Mirror Overhead lockers Plisse curtains Shelves Stainless steel openable portholes (2) w/ covers TV Ventilation under bed Wardrobe

## Port Guest Stateroom

---

(2) single beds w/ mattresses, pillows & bedspreads Folding bunk bed Car-stereo CD w/ 2 loudspeakers Chests of drawers (2) Fully fitted carpets Mirror Overhead lockers Plisse curtains Shelves Stainless steel openable portholes (2) w/ covers TV Ventilation under bed Wardrobe

## Guest & VIP Bathrooms

---

Ceramic bidet Electric ceramic WC (w/ fresh water) Floor in teak, mat painted Mirrors Overhead lockers & shelves Plisse curtains Separate shower w/ door Stainless steel openable porthole Washbasin w/ marble countertop

## Crew Quarters

---

(2) Cabins Each cabin with 2 bunk beds w/ mattresses, pillow & bedspread Lockers & storages Plisse curtains Stainless steel openable porthole w/ cover

## Crew Bathroom

---

Electric marine WC (w/ fresh water) Plisse curtains Shower Stainless steel openable porthole Storage Washbasin

## Crew Lounge

---

Dinette w/ sofa & table Door to the systems compartment Various lockers Washing machine w/ dryer Refrigerator Microwave Coffee maker

## Equipment

---

Air conditioning throughout Anti Rolling Gyro Mitsubishi (2) MSM-4000 + MSM-4000 Dual Atlas shore power frequency converter Autoclave pump 24V for salt water at bow, transom & galley Autoclave pump 24V fresh water Bilge pump system w/ 1 electric self-priming pump w/ 6 cocks (bow-clear waters-waste waters-engines-lazarette-crew cabin) Bilge pump system w/ 5 electro-automatic diving pumps Cathodic protection w/ zinc anodes on the shafts and flaps Electric system consisting of: 1000Ah 24V bank of batteries for service (10) 100A 24V automatic battery charger 200Ah 12V auxiliary generator batteries 200Ah 12V main generator batteries 24V lighting throughout 600Ah 24V engine starting batteries (6) Auxiliary generator 23 KW Battery disconnecting electronic & mechanical switches Electric outlets 230V throughout Inverter 24Vdc/ 203Vac 1500W for fridge Inverter 24Vdc/ 203Vac 3000W w/ battery charger combi 100A Mechanical & electric battery parallel switch Shore plug 63A Electric WC system w/ fresh water Electrohydraulic powered steering Fire extinguishers Fresh-water tank lt. 1300 Gray water tank (330 lt.) Holding tank (300 lt.) w/ gauge (3/4 & full) Hot water systems w/ water heater 80 lt. (2) Remote engine & generator shut down Silenced underwater exhausts Smoke detection alarm in the engine room Stuffing box w/ dripless shaft seal Trim tabs (Flaps) TV shore supply Custom stainless shelf for spare props

---

## Engine & Mechanical Equipment

---

Air intakes w/ remote controlled shut off Bilge pump Algae X Fuel Polishing System Change over valve to allow engine to pump water from the bilge Electric-self-locking blowers (2) Fresh-water outlet for filling & washing Fuel tank in fiberglass 2008 gal. w/ settler b/ master cabin and engine room Inspection lights Portable lamp Raw water engine filters (2) Separ engine filters Tool kit, if supplied by engine manufacture Watertight bulkhead abaft (systems room included) Watertight insulated bulkhead ahead Access door to the engine room (w/ fixed porthole) Access hatch from cockpit Auxiliary electric generator 23 KW Main electric generator 23 KW Port generator 1550 hours Starboard generator 1600 hours Custom generator room acoustic insulation

---

## Systems Compartment

---

Water maker 130 lt./h Watertight bulkhead abaft Watertight door from crew area Workshop bench fitted w/ vice & a selection of tools

---

## Forepeak

---

Winch push-button controls Anchor chain lockers (2) Inspection covers (2) Salt water outlet Shelves Tube for hanging mooring lines

---

## Исключения

---

При продаже яхты исключаются личные вещи владельца.

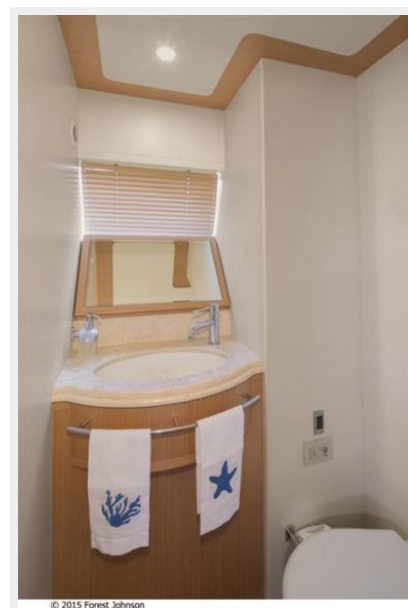
---

## Отказ от ответственности

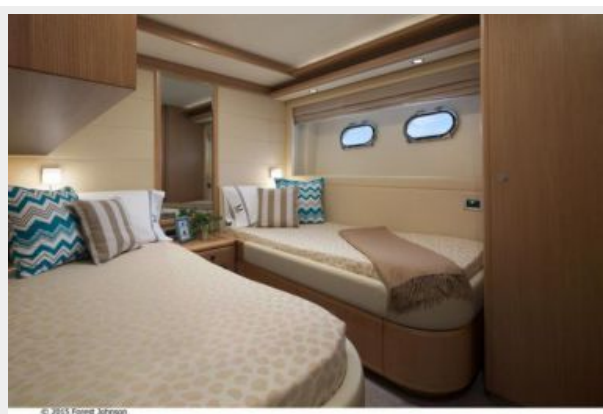
---

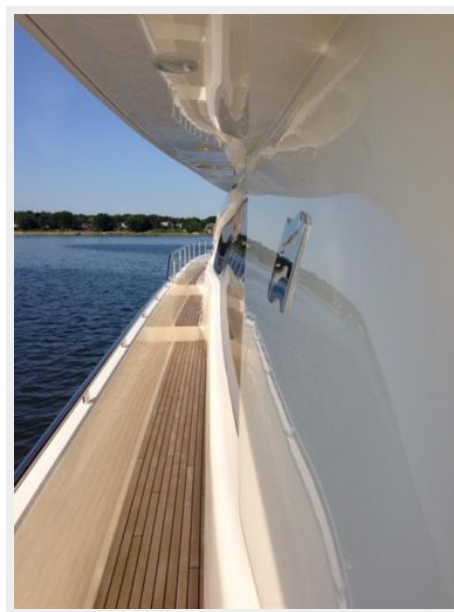
Компания предоставляет описание судна или яхты добросовестно, но не может гарантировать точность этой информации, а также не ручается за техническое состояние. Покупатель должен проинструктировать своих агентов или оценщиков исследовать представленную информацию более подробно, по собственному желанию. Продажа судна или яхты, изменение цены или снятие с продажи будет происходить без предварительного уведомления.

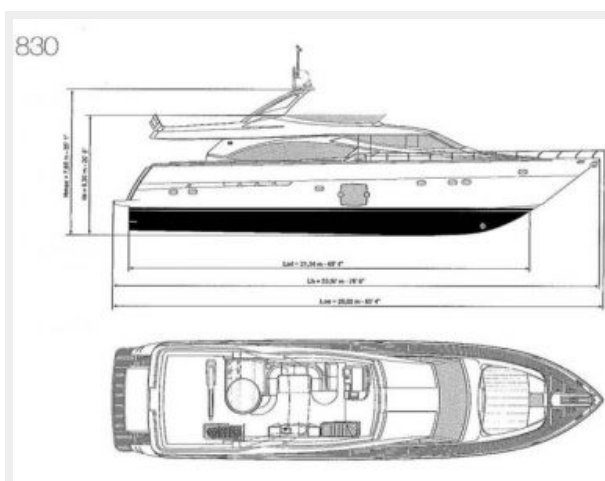
# ФОТОГРАФИИ



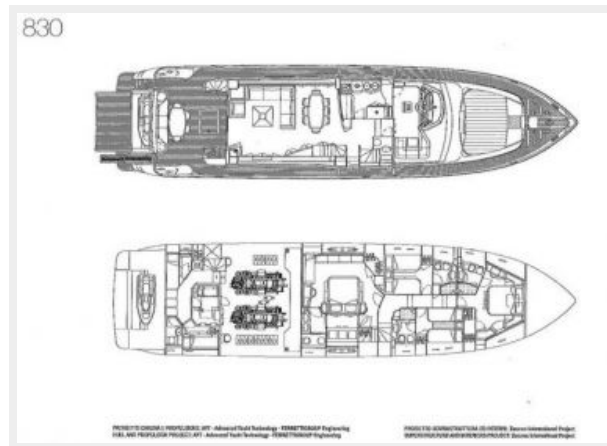












# КОНТАКТЫ

---

Андрей Шестаков (Andrey Shestakov) – ведущий яхтенный брокер отдела продаж яхт и судов компании Shestakov Yacht Sales Inc. Официальный представитель Shestakov Yacht Sales Inc. для русскоговорящих клиентов в центральном офисе компании в Майами/Форт Лодердейл/Флорида/США.

## Контактная информация

---

Email: [andrey@shestakovyachtsales.com](mailto:andrey@shestakovyachtsales.com)

Web: [shestakovyachtsales.com](http://shestakovyachtsales.com)

## Телефоны

---

Краснодарский край: **+7(918)465-66-44**

США, Майами, Флорида: **+1(954)274-4435**

## Время работы

---

Понедельник – Суббота: **9:00 - 21:00**  
EDT

Воскресенье: **Закрито**

## Адрес

---



Harbour Towne Marina, 850 NE 3rd St,  
STE 213, Dania, FL 33004