

TOPAS — AZIMUT



Судостроитель: [AZIMUT](#)

Год постройки: 1994

Модель: Моторная яхта

Цена: **ЦЕНА ЯХТЫ ПО ЗАПРОСУ**

Местонахождение: United States

Длина общая: 43' 0" (13.11m)

Ширина: 14' 6" (4.42m)

Мин. осадка: 3' 3" (0.99m)

Макс. осадка: 3' 5" (1.04m)

Крейс. скорость: 22 Kts. (25 MPH)

Макс. скорость: 26 Kts. (30 MPH)

Купить **TOPAS — AZIMUT** а также выбрать подходящую вам яхту из нашего каталога яхт вам поможет опытный яхтенный брокер Андрей Шестаков. На сегодняшний день компания **Shestakov Yacht Sales Inc.** имеет большое количество яхт в собственном списке продаж, а также тесно сотрудничает со всеми крупными яхтенными производителями по всему миру.

Для того чтобы купить яхту **TOPAS — AZIMUT** а также проконсультироваться по любому вопросу связанному с покупкой, продажей, чартером яхт позвоните по телефону **+7(918)465-66-44**.

ОГЛАВЛЕНИЕ

ОГЛАВЛЕНИЕ	2
ХАРАКТЕРИСТИКИ	6
Основная информация	6
Размеры	6
Скорость, вместимость и масса	6
Размещение	6
Корпус и палуба	7
Информация о двигателе	7
ПОДРОБНОЕ ОПИСАНИЕ	8
Walkthrough	8
Salon	8
Galley	8
Lower Station	8
Companionway	9
Portside Guest Cabin	9
Starboard Guest Cabin	9
Guest Head	9
Master Cabin	9
Master Head	10
Foredeck	10
Cockpit	10
Lazarette	10
Flybridge	10
Helm Area	11
Engine Room	11
Electrical	11
Remarks	11
Exclusions	11

Исключения	12
Отказ от ответственности	12
ФОТОГРАФИИ	13
Salon Sofa	13
Salon Looking Forward	13
Salon Loveseat	13
Salon Looking Forward	13
Salon Electrical Panel	14
Galley	14
Galley	14
Galley	14
Lower Helm Seat	15
Lower Helm	15
Lower Helm Detail	15
Lower Helm to Port	15
Companionway	15
Port Cabin	15
Starboard Cabin	16
Starboard Cabin Dehumidifier	16
Starboard Guest Head	16
Master Cabin	16
Master Cabin to Starboard	17
Master Cabin to Port	17
Master Shower	17
Master Head	17
Bow	18
Windlass Detail	18
Side Deck	18
Aft Deck	18

Aft Deck	19
Passerelle	19
Lazarette Access	19
Aft Deck Seating	19
Flybridge Aft	19
Flybridge Forward	19
Flybridge Seating	20
Flybridge Seating	20
Flybridge Helm Seat	20
Flybridge Helm	20
Flybridge Helm	20
Flybridge Helm	20
Engine Room Access	21
Port Engine	21
Engine Room Center	21
Starboard Engine	21
Generator	21
Charger	21
Engine Room Aft to Starboard	22
Engine Room Aft to Port	22
From Dock	22
From Dock	22
Blue LED Lights	22
From Above	22
Layout	23
КОНТАКТЫ	24
Контактная информация	24
Телефоны	24
Время работы	24

Адрес

24

ХАРАКТЕРИСТИКИ

Основная информация

Тип судна: Моторная яхта	Подкатегория: Sedan Cruiser
Модельный год: 1994	Год постройки: 1994
Страна: United States	Верх: Open
Открытая палуба мостика: Да	

Размеры

Длина общая: 43' 0" (13.11m)	Длина палубы: 45' 9" (13.94m)
Ширина: 14' 6" (4.42m)	Мин. осадка: 3' 3" (0.99m)
Макс. осадка: 3' 5" (1.04m)	Длина привального бруса: 45' 9" (13.94m)

Скорость, вместимость и масса

Крейс. скорость: 22 Kts. (25 MPH)	Крейсерская скорость поворота: 2400 Kts.
Макс. скорость: 26 Kts. (30 MPH)	Макс. скорость поворота: 2800 Kts.
Водоизмещение: 28000 Pounds	Чистый вес: 14 Pounds
Вместимость воды: 132 Gallons	Объем топливного бака: 396 Gallons

Размещение

Всего кают: 3	Всего коек: 5
Спальные места: 6	Всего ком. состава: 2

Корпус и палуба

Материал корпуса: Fiberglass

Материал палубы: Fiberglass

Комплектация корпуса: Deep Vee

Дизайнер корпуса: Azimut

Дизайнер экстерьера: Azimut

Дизайнер интерьера: Azimut

Информация о двигателе

Двигатели: 2

Производитель: Caterpillar

Модель: 3208TA

Тип двигателя: Inboard

Тип топлива: Diesel

ПОДРОБНОЕ ОПИСАНИЕ

Walkthrough

Entering from the swim platform is the Aft Deck with built in seating. To starboard via a sliding stainless steel entry door is the Salon entrance. Immediately upon entering is a spacious Salon with port and starboard built in seating. Further forward is a complete Lower Station. To starboard down two steps is the Galley. Forward and down three steps are the Guest Accommodations. To port is a twin lower berth Cabin; to starboard is an upper and lower Cabin. Forward is a wet Head. Furthest forward is the Master Cabin with a double berth and a private Head with a curtain shower.

Salon

Entering the Salon through a sliding stainless steel entry door with full drapes is a cabinet to starboard with a refrigerator below and the yachts electric panel above. Next forward is a two person loveseat with rope lighting and storage below, and a Toshiba Regza 30 inch LCD TV above. Further forward is an open bookcase with a cabinet below for storage and a Blaupunkt AM/FM stereo. To port is an L shaped leather sofa to seat four with storage and rope lighting below. In front of the sofa is a high/low two leaf table with the lower position for cocktails or the upper position for dining. The Salon also has full drapes over the side windows, six halogen mini spots, two stereo speakers, AC controls and a carpeted sole.

Galley

The yacht's Galley is next forward to starboard and down two steps.

Equipment includes:

- Granite counter tops • Double under mount stainless sink • Pull out spray faucet • Indel refrigerator with freezer compartment behind a cherry door • DeLonghi built in microwave • AEG two burner ceramic cooktop • 110v and 220v outlets • (8) Cherry cabinet doors • (5) Cherry cabinet drawers • Teak and holly sole • Large storage hatch under the sole

Lower Station

The Lower Station is to port, with excellent all around visibility. Equipment includes:

- Two person helm seat with storage cabinet below • A cherry helm wheel • A shipmate VHF radio • Navico Powerpilot with handheld remote • Mathers electronic engine controls • Bennett trim tab controls • Vetus bow thruster controls • Full electric engine gauges • VDO digital depth gauge • Sine rudder angle indicator • Riviera 4 inch magnetic compass • Furuno LCD 16 mile

radar • Windless controls • Bilge pump indicator lights • Battery parallel switches • Port and starboard electric windows

Companionway

Through a centerline Companionway one can access the three Guest Cabins and two Heads.

Portside Guest Cabin

The Portside Guest Cabin has twin single berths going fore and aft separated by a two drawer cherry nightstand; each berth has a gooseneck reading light. Outboard of the port berth are two opening stainless steel portholes covered with mini blinds. Next forward is a large hanging locker with two drawers and a dressing mirror within. Also in this cabin are two overhead halogen mini spots, AC controls and a carpeted sole.

Starboard Guest Cabin

The Starboard Guest Cabin has two over under berths along the hull side. There are two opening stainless steel portholes above the upper berth. There is also a large hanging locker with two drawers within. Overhead are two halogen DC lights. Also in this cabin is a custom storage cabinet with built in dehumidifier, which drains to the shower sump.

Guest Head

The Guest Head is forward and to starboard. It has a stainless steel sink in the vanity, an electric toilet under a hinged top, three storage doors, and a hinged mirrored medicine cabinet above the sink. The shower is a handheld or wall mountable fixture with a curtain enclosure. Also in this Head are two overhead DC lights and an opening stainless steel porthole.

Master Cabin

Centerline forward is the entrance to the Master Cabin. A double platform berth is on centerline forward. There are four storage drawers at the foot of the berth. The headboard is mirrored with an upholstered panel below. Upholstered shelves port and starboard serve as nightstands. Above are mini blinds with one opening stainless steel porthole to both port and starboard. Above are four cabinet doors, the forward two covered in mirrors on both the port and starboard sides. Aft on both the port and starboard sides are ample hanging lockers. Furthest aft is the entrance to the private Head. Also in this Cabin are six halogen overhead spots, a privacy screen over the forward deck hatch, AC controls and a carpeted sole.

Master Head

The private Master Head has a vanity with a stainless steel sink and a single cabinet door below. A mirrored medicine cabinet is above. Next aft is both an electric head and bidet under hinged panels. Above is an opening stainless steel porthole behind mini blinds. The shower is a handheld or wall mounted fixture with a sliding curtain enclosure. Also in this Head are two halogen mini spots.

Foredeck

• Fiberglass nonskid deck • Stainless steel anchor davit • Hinged door to anchor locker • Lofrans anchor windless with all chain (approx. 215' of 5/8 chain) • Bruce 42 pound anchor • Welded stainless steel bow rails with stainless safety cable • Six stainless steel fender baskets • Acrylic deck hatch to forward cabin • Removable bow cushions • Salon windshield cover • Two stainless steel windshield wipers • Side cabin removable weather covers

Cockpit

• Faux teak deck • Six step teak and stainless ladder to fly bridge • (2) Faux teak steps to port and starboard side decks • Cockpit shower • Cockpit handrails • Hydraulic passerelle 8'2" when extended • Stern cleats • Faux teak covered integral swim platform • Shore water inlet with pressure regulator • Four step folding swim ladder • Trim tabs • Sliding stainless steel entry door to salon • (2) Storage lockers • (2) Overhead dc lights • High water bilge alarm panel • Phone and TV inlet • Manuel bilge pump • Built in storage locker/seat with removable cushions • In direct Cockpit LED lighting, blue/red

Lazarette

• Access from Aft Deck • Hydraulic power pack for passerelle • Shore power breakers • Storage • Rudder access • Trim tab mechanicals • Aft bilge pump • Extra dock lines and fenders • Three step access ladder to Lazarette

Flybridge

• Acrylic hinged access hatch with stainless steel safety rail • Fiberglass nonskid deck • International Navigation lights • Fiberglass radar arch • Electric signal horn • Canister life raft not currently certified (Plastima 6 person) • Port, starboard and aft stainless steel safety rail • Plexiglass Venturi windscreen • L shaped starboard side seat • Two person helm seat • Rear docking lights • Blue lights on arch • (2) Eight inch stereo speakers on arch • Covers for Flybridge seats • Covers for Flybridge helm • Bimini top (stored off boat)

Helm Area

• Portside helm with wheel steering • Mathers electronic engine controls • Bennett trim tab controls • VDO rudder angle indicator • Riviera 3 inch magnetic compass • (2) Electronic tachometers • Temperature pressure and volt meters for both engines • Windless controls • Start/Stop buttons • Garmin GPS 4210 plotter • Navman Fish 4100 fish finder/digital depth • Raymarine Ray 45 VHF • Large hinged storage locker at helm • JVC AM/FM CD player with iPod connection • (2) Poly Planar eight inch stereo speakers • VDO digital depth meter

Engine Room

• Hinged Cockpit Engine Room access • Three step access ladder • Racor 900 fuel filters • Dripless shaft seals • Rule high water bilge alarm • Fixed firefighting system • Hydraulic steering • DC Engine Room lighting • Groco house water pump with accumulator tank • Hand pump for engine and transmission draining • Frigomar heating and air conditioning system • Hot water tank, Sigram approx. 8 gallons • Fiberglass mufflers • Solid copper fuel lines • 12 Volt Engine Room blowers • ZF Marine gears • 2" Stainless steel prop shafts • (3) Rule bilge pumps

Electrical

• 12 Volt DC system • 110V/220 Volt AC system • Battery shutoff switches for main engines • Sentry 49 amp battery charger • Group 24 battery for generator starting • (4) 4D batteries for hose and engine starting • Generator battery shutoff switch • Mase marine 7 KW generator in a sound shield with 151 hours • Bonding system

Note: Delivered as a 50 HZ 220 volt yacht. 110V 60 HZ outlets have been added as needed.

Remarks

TOPAS is an AZ 43 with a LOA of 47'6". She has a huge Flybridge, three staterooms, a Lower Station and a Cockpit access to Engine Room.

Very low hour CAT 3208's give her a good turn of speed. Her Bernard Olesinski designed 19 degree deep vee hull give her an excellent ride in almost any sea.

Exclusions

While every effort was made to list all pertinent included equipment aboard TOPAS, there are some personal belongings aboard. Prospective purchasers should assume any item not specifically mentioned herein will not convey at closing.

Исключения

При продаже яхты исключаются личные вещи владельца.

Отказ от ответственности

Компания предоставляет описание судна или яхты добросовестно, но не может гарантировать точность этой информации, а также не ручается за техническое состояние. Покупатель должен проинструктировать своих агентов или оценщиков исследовать представленную информацию более подробно, по собственному желанию. Продажа судна или яхты, изменение цены или снятие с продажи будет происходить без предварительного уведомления.

ФОТОГРАФИИ

Salon Looking Forward



Salon Sofa



Salon Loveseat



Salon Looking Forward



Salon Electrical Panel



Galley



Galley

Galley



Lower Helm Seat



Lower Helm



Lower Helm Detail



Lower Helm to Port



Companionway



Port Cabin



Starboard Cabin



Starboard Cabin Dehumidifier



Starboard Guest Head



Master Cabin



Master Cabin to Starboard



Master Cabin to Port



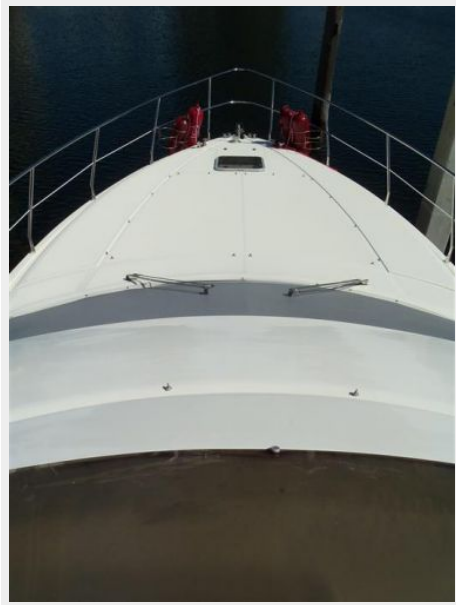
Master Head



Master Shower



Bow



Windlass Detail



Side Deck



Aft Deck



Aft Deck



Passerelle



Lazarette Access



Aft Deck Seating



Flybridge Forward



Flybridge Aft



Flybridge Seating



Flybridge Seating



Flybridge Helm Seat



Flybridge Helm



Flybridge Helm



Flybridge Helm



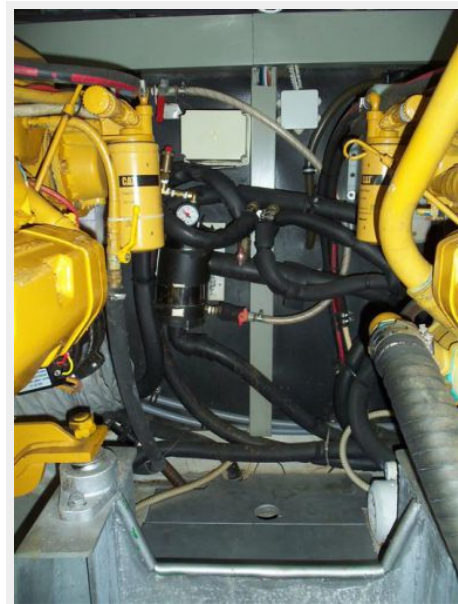
Engine Room Access



Port Engine



Engine Room Center



Starboard Engine



Generator



Charger



Engine Room Aft to Starboard



Engine Room Aft to Port



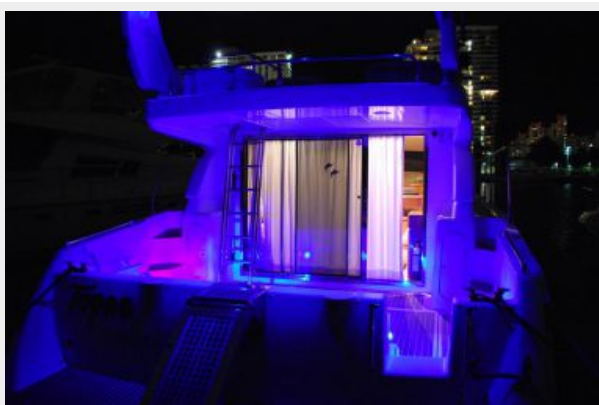
From Dock



From Dock



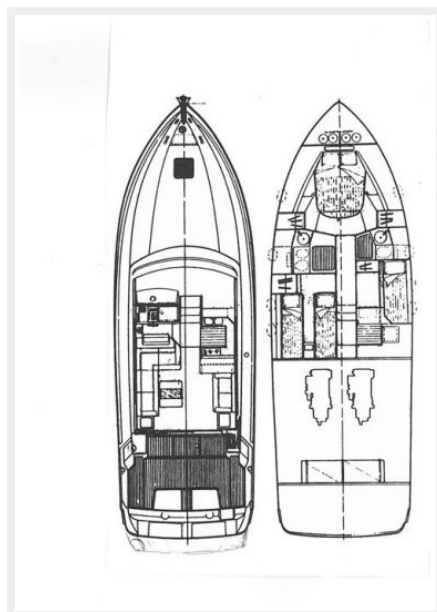
Blue LED Lights



From Above



Layout



КОНТАКТЫ

Андрей Шестаков (Andrey Shestakov) – ведущий яхтенный брокер отдела продаж яхт и судов компании Shestakov Yacht Sales Inc. Официальный представитель Shestakov Yacht Sales Inc. для русскоговорящих клиентов в центральном офисе компании в Майами/Форт Лодердейл/Флорида/США.

Контактная информация

Email: andrey@shestakovyachtsales.com

Web: shestakovyachtsales.com

Телефоны

Краснодарский край: **+7(918)465-66-44**

США, Майами, Флорида: **+1(954)274-4435**

Время работы

Понедельник – Суббота: **9:00 - 21:00**
EDT

Воскресенье: **Закрито**

Адрес



Harbour Towne Marina, 850 NE 3rd St,
STE 213, Dania, FL 33004