

MAYALISA II — MERIDIAN



Судостроитель: MERIDIAN

Год постройки: 2004

Модель: Моторная яхта

Цена: ЦЕНА ЯХТЫ ПО ЗАПРОСУ

Местонахождение: United States

Длина общая: 45' 0" (13.72m)

Ширина: 14' 4" (4.37m)

Мин. осадка: 3' 10" (1.17m)

Макс. осадка: 3' 10" (1.17m)

Крейс. скорость: 15 Kts. (17 MPH)

Макс. скорость: 22 Kts. (25 MPH)

Купить **Mayalisa II — MERIDIAN** а также выбрать подходящую вам яхту из нашего каталога яхт вам поможет опытный яхтенный брокер Андрей Шестаков. На сегодняшний день компания **Shestakov Yacht Sales Inc.** имеет большое количество яхт в собственном списке продаж, а также тесно сотрудничает со всеми крупными яхтенными производителями по всему миру.

Для того чтобы купить яхту **Mayalisa II — MERIDIAN** а также проконсультироваться по любому вопросу связанному с покупкой, продажей, чартером яхт позвоните по телефону **+7(918)465-66-44**.

ОГЛАВЛЕНИЕ

ОГЛАВЛЕНИЕ	2
ХАРАКТЕРИСТИКИ	6
Обзор	6
Основная информация	6
Размеры	6
Скорость, вместимость и масса	6
Размещение	7
Корпус и палуба	7
Информация о двигателе	7
ПОДРОБНОЕ ОПИСАНИЕ	8
45' Meridian Overview	8
45' Meridian Vessel Walkthrough	8
45' Meridian Accommodations	8
45' Meridian Salon	8
45' Meridian Galley	8
45' Meridian Dining	9
45' Meridian Master Stateroom	9
45' Meridian Guest Stateroom	9
45' Meridian Laundry	9
45' Meridian Flybridge	9
45' Meridian Sundeck	9
45' Meridian Cockpit	10
45' Meridian Audio/Visual Equipment	10
45' Meridian Electronics	10
45' Meridian Electrical System	11
45' Meridian Engine/Mechanical Equipment	11
45' Meridian Deck Equipment	11
45' Meridian Tender	12

45' Meridian Safety and Fire Protection	12
45' Meridian Exclusions	13
45' Meridian Disclaimer	13
Исключения	13
Отказ от ответственности	13
ФОТОГРАФИИ	14
45' Meridian Aft Profile	14
45' Meridian Starboard Profile	14
45' Meridian Anchor Windlass	14
45' Meridian Foredeck Aft	14
45' Meridian Port Side Deck Photo1	15
45' Meridian Port Side Deck Photo2	15
45' Meridian Starboard Side Deck Photo1	15
45' Meridian Starboard Side Deck Photo2	15
45' Meridian Flybridge Forward	16
45' Meridian Flybridge Aft	16
45' Meridian Flybridge Port	16
45' Meridian Flybridge Starboard	16
45' Meridian Flybridge Helmseat	16
45' Meridian Flybridge Helm	16
45' Meridian Flybridge Seating	17
45' Meridian Flybridge Refrigerator	17
45' Meridian Sundeck	17
45' Meridian Sundeck Port	17
45' Meridian Sundeck Starboard	17
45' Meridian Sundeck Forward	17
45' Meridian Cockpit	18
45' Meridian Cockpit Forward	18
45' Meridian Cockpit Port	18

45' Meridian Cockpit Starboard	18
45' Meridian Swim Platform	18
45' Meridian Salon Forward	18
45' Meridian Salon Aft	19
45' Meridian Salon Port	19
45' Meridian Salon Starboard	19
45' Meridian Salon Starboard Seating	19
45' Meridian Salon Starboard Aft	19
45' Meridian Galley Photo1	19
45' Meridian Galley Photo2	20
45' Meridian Master Stateroom	20
45' Meridian Master Stateroom Port	20
45' Meridian Master Stateroom Aft	20
45' Meridian Master Stateroom Head	20
45' Meridian Master Stateroom Shower	20
45' Meridian Guest Stateroom	21
45' Meridian Guest Stateroom Port	21
45' Meridian Guest Stateroom Head	21
45' Meridian Guest Stateroom Starboard	21
45' Meridian Guest Stateroom Shower	22
45' Meridian Washer/Dryer	22
45' Meridian Engine Room Access	22
45' Meridian Engine Room Forward	22
45' Meridian Engine Room Aft	23
45' Meridian Port Main Engine	23
45' Meridian Port Racor Fuel Filter	23
45' Meridian Starboard Main Engine	23
45' Meridian Starboard Racor Fuel Filter	23
45' Meridian Water Heater	23

45' Meridian Electrical Panel	24
45' Meridian Generator Soundbox	24
45' Meridian Battery Charger	24
45' Meridian Generator	24
45' Meridian Layout	24
КОНТАКТЫ	25
Контактная информация	25
Телефоны	25
Время работы	25
Адрес	25

ХАРАКТЕРИСТИКИ

Обзор

2004 45' Meridian 459 Cockpit Motoryacht

Mayalisa II is a 2004 45' Meridian sundeck motoryacht in very nice condition offering a 2 stateroom, 2 head layout, cockpit-sundeck-flybridge design, fuel efficient and low hour Cummins main engines, bow & stern thrusters and new stratoglass enclosure on the flybridge and sundeck. She is a Great Loop veteran and turn-key for her next cruise. The sellers have bought a house in Florida, so Mayalisa II is now offered for sale at an attractive asking price in very nice condition to encourage a quick sale to accommodate their move ashore. Price reduced!

Основная информация

Тип судна: Моторная яхта	Подкатегория: Aft Cabin
Модельный год: 2004	Год постройки: 2004
Страна: United States	Регистрационный номер: US-MDNK2017A404
Открытая палуба мостика: Да	Кубрик: Да

Размеры

Длина общая: 45' 0" (13.72m)	Ширина: 14' 4" (4.37m)
Мин. осадка: 3' 10" (1.17m)	Макс. осадка: 3' 10" (1.17m)
Трапы: 14' 4" (4.37m)	

Скорость, вместимость и масса

Крейс. скорость: 15 Kts. (17 MPH)	Макс. скорость: 22 Kts. (25 MPH)
Водоизмещение: 30700 Pounds	Вместимость воды: 90 Gallons
Вместимость сточного бака: 55 Gallons	Объем топливного бака: 330 Gallons

Размещение

Всего кают: 2

Всего коек: 3

Спальные места: 6

Всего ком. состава: 2

Корпус и палуба

Материал корпуса: Fiberglass

Материал палубы: Composite Fiberglass

Цвет корпуса: White

Информация о двигателе

Двигатели: 2

Производитель: Cummins

Модель: 6BTA5.9-M3

Тип двигателя: Inboard

Тип топлива: Diesel

ПОДРОБНОЕ ОПИСАНИЕ

45' Meridian Overview

2004 45' Meridian 459 Cockpit Motoryacht

Mayalisa II is a 2004 45' Meridian sundeck motoryacht in very nice condition offering a 2 stateroom, 2 head layout, cockpit-sundeck-flybridge design, fuel efficient and low hour Cummins main engines, bow & stern thrusters and new stratoglass enclosure on the flybridge and sundeck. She is a Great Loop veteran and turn-key for her next cruise. The sellers have bought a house in Florida, so Mayalisa II is now offered for sale at an attractive asking price in very nice condition to encourage a quick sale to accommodate their move ashore.

45' Meridian Vessel Walkthrough

Boarding the vessel on the swimplatform, you walk through a transom door into the spacious cockpit. There is a sliding glass door to the master stateroom or you can walk up molded-in steps to the large, Stratoglass enclosed sundeck. Once in the sundeck, you will find side deck access doors on each side or molded-in steps to the flybridge port forward. There is a sliding door to the salon. Once inside the salon, you will find the master stateroom entrance port aft, a sleeper sofa/recliner to port, entertainment/storage cabinetry starboard aft and a sofa and table to starboard. Walk forward and step down into the galley. The head and shower are to starboard and the guest stateroom is forward. Engine room access is via salon sole hatches.

45' Meridian Accommodations

Mayalisa II offers a full beam master stateroom aft with queen size berth, ensuite, separate shower and head and a sliding glass door to the cockpit. The guest stateroom is forward and offers an island queen size berth and ensuite head with enclosed shower.

45' Meridian Salon

The large, airy salon offers a sleeper sofa/recliner to port, wrap-around sofa with storage underneath and a hi/lo table to starboard, entertainment and storage cabinetry starboard aft, steps to the sundeck and master stateroom aft, carpet, opening side windows and blinds.

45' Meridian Galley

The galley is located port forward.

- Norcold refrigerator/freezer

- Sharp Carousel Grill2 convection/microwave oven
- Corian countertop
- Stainless steel sink
- Storage cabinets and drawers
- Norcold refrigerator/freezer on the flybridge
- U-Line icemaker on the sundeck (2015)
- Magma stainless steel BBQ grill in the cockpit

45' Meridian Dining

Dining space is available at the salon table and the sundeck table.

45' Meridian Master Stateroom

The full beam master stateroom aft offers a queen size berth, reading lights, nightstands, 3 portlights, aft sliding door to the cockpit, curtains, carpet, hanging lockers, storage cabinets and drawers and a separate head and shower.

45' Meridian Guest Stateroom

The guest stateroom is forward and offers an island queen size berth, reading lights, 2 portlights, overhead hatch, carpet, hanging locker, storage cabinet and drawers, shelves and an ensuite head with enclosed shower. There is access to the head from the salon/galley area also.

45' Meridian Laundry

- Splendide Comb-O-Matic 5200 washer/dryer

45' Meridian Flybridge

The flybridge offers a bimini, new Stratoglass enclosure, wrap-around seating to starboard, a benchseat port forward, helm forward, helmseat, bound carpet over non-skid deck and a Norcold refrigerator/freezer.

45' Meridian Sundeck

The sundeck offers a hardtop, side deck access doors, Stratoglass enclosure (2014), molded-in steps to the flybridge, wetbar with new U-Line icemaker starboard forward, bound carpet over non-skide deck, benchseat aft, 2 teak deck chairs, 2 pedestal table and an aft gate to the cockpit molded-in steps.

45' Meridian Cockpit

The cockpit offers a non-skid deck, transom gate to the fiberglass swimplatform, molded-in steps to the sundeck, fender storage on each side, transom storage locker, sliding glass door to the master stateroom, 2 deck chairs, Magma stainless steel BBQ grill and a fresh water hot/cold shower.

45' Meridian Audio/Visual Equipment

- Raymarine Sat TV system
- Raymarine HD antenna control unit in the salon
- JVC TV in the salon
- JVC TH-M45 DVD Digital Theatre System in the salon
- Dynex flat screen TV in the master stateroom
- Sony DVP-SR200P DVD player in the master stateroom
- JBL Marine MR-16 AM/FM/CD player in the master stateroom
- RCA flat screen TV in the guest stateroom
- JBL MR-30 AM/FM/CD player on the flybridge
- JBL remote stereo controller on the sundeck

45' Meridian Electronics

- Raymarine RL80C Pathfinder Plus Radar/chart plotter
- Raymarine ST6001 Smart Pilot autopilot
- Raymarine ST40 depth sounder
- Raymarine Ray 53 DSC VHF
- Danforth magnetic compass

- Chart inventory

45' Meridian Electrical System

- Onan 11.5 kW generator with 203 hours
- Xantrex TrueCharge2 40 amp battery charger
- 50 amp shore cord
- Glendinning Cablemaster shore cord system
- 12vdc outlet at the flybridge helm

45' Meridian Engine/Mechanical Equipment

- Twin Cummins 6BTA5.9-M3 370 hp main engines with 810 hours each
- ZF Hurth 80-A gearboxes
- Teleflex engine controls
- Dripless shaft seals
- Perko sea strainers
- Racor fuel filters
- Seastar hydraulic steering system
- Sidepower bow & stern thrusters
- Marine Air Systems reverse cycle air conditioning/heating system
- Attwood 10.5 gallon water heater
- Vacuflush heads
- Sealand Sani Gard holding tank vent filter
- Seavac central vacuum system

45' Meridian Deck Equipment

-
- Lewmar anchor windlass with foot controls
 - Lewmar Delta anchor
 - Danforth anchor
 - Foredeck sunpads
 - Non-skid decks
 - Stainless steel rails
 - Stainless steel deck hardware
 - Windscreen cover
 - Boarding gates each side aft
 - Stainless steel swim ladder
 - Integral fiberglass swimplatform
 - Fresh water hot/cold shower aft
 - Dock water connection aft
 - Deck storage box on the swimplatform

45' Meridian Tender

- Aqua Dutch 9' inflatable dinghy
- Nissan 5 hp 4-stroke outboard
- Weaver swimplatform davit system

45' Meridian Safety and Fire Protection

- Rule bilge pumps
- Jabsco searchlight
- Lifesling2 overboard rescue system
- Ongara horns
- Safe-T-Alert carbon monoxide detectors

- Fireboy FE241 engine room fire suppression system

45' Meridian Exclusions

- Sellers' personal belongings
- Tools
- Galleyware
- Salon pillows

45' Meridian Disclaimer

The Company offers the details of this vessel in good faith but cannot guarantee or warrant the accuracy of this information nor warrant the condition of the vessel. A buyer should instruct his agents, or his surveyors, to investigate such details as the buyer desires validated. This vessel is offered subject to prior sale, price change, or withdrawal without notice.

Исключения

При продаже яхты исключаются личные вещи владельца.

Отказ от ответственности

Компания предоставляет описание судна или яхты добросовестно, но не может гарантировать точность этой информации, а также не ручается за техническое состояние. Покупатель должен проинструктировать своих агентов или оценщиков исследовать представленную информацию более подробно, по собственному желанию. Продажа судна или яхты, изменение цены или снятие с продажи будет происходить без предварительного уведомления.

ФОТОГРАФИИ

45' Meridian Starboard Profile



45' Meridian Aft Profile



45' Meridian Anchor Windlass



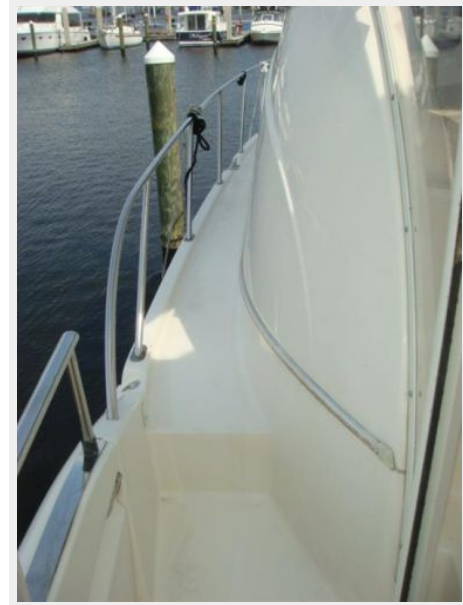
45' Meridian Foredeck Aft



45' Meridian Port Side Deck Photo1



45' Meridian Port Side Deck Photo2



45' Meridian Starboard Side Deck Photo1



45' Meridian Starboard Side Deck Photo2



45' Meridian Flybridge Forward



45' Meridian Flybridge Aft



45' Meridian Flybridge Port



45' Meridian Flybridge Starboard



45' Meridian Flybridge Helmseat



45' Meridian Flybridge Helm



45' Meridian Flybridge Seating



45' Meridian Flybridge Refrigerator



45' Meridian Sundeck



45' Meridian Sundeck Port



45' Meridian Sundeck Starboard



45' Meridian Sundeck Forward



45' Meridian Cockpit



45' Meridian Cockpit Forward



45' Meridian Cockpit Port



45' Meridian Cockpit Starboard



45' Meridian Swim Platform



45' Meridian Salon Forward



45' Meridian Salon Aft



45' Meridian Salon Port



45' Meridian Salon Starboard



45' Meridian Salon Starboard Seating



45' Meridian Salon Starboard Aft



45' Meridian Galley Photo1



45' Meridian Galley Photo2



45' Meridian Master Stateroom



45' Meridian Master Stateroom Port



45' Meridian Master Stateroom Aft



45' Meridian Master Stateroom Head



45' Meridian Master Stateroom Shower



45' Meridian Guest Stateroom



45' Meridian Guest Stateroom Port



45' Meridian Guest Stateroom Head

45' Meridian Guest Stateroom Starboard



45' Meridian Guest Stateroom Shower



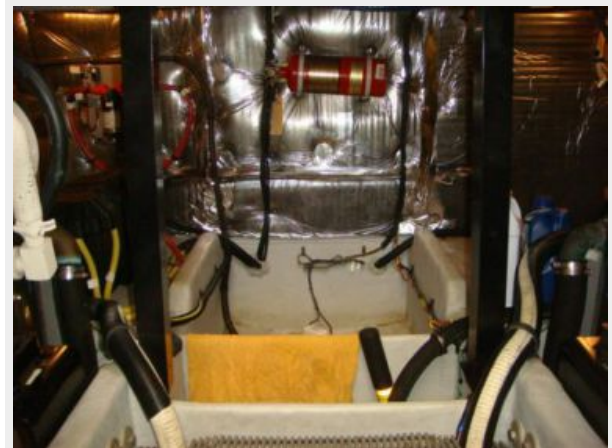
45' Meridian Washer/Dryer



45' Meridian Engine Room Access



45' Meridian Engine Room Forward



45' Meridian Engine Room Aft



45' Meridian Port Main Engine



45' Meridian Port Racor Fuel Filter



45' Meridian Starboard Main Engine



45' Meridian Starboard Racor Fuel Filter



45' Meridian Water Heater



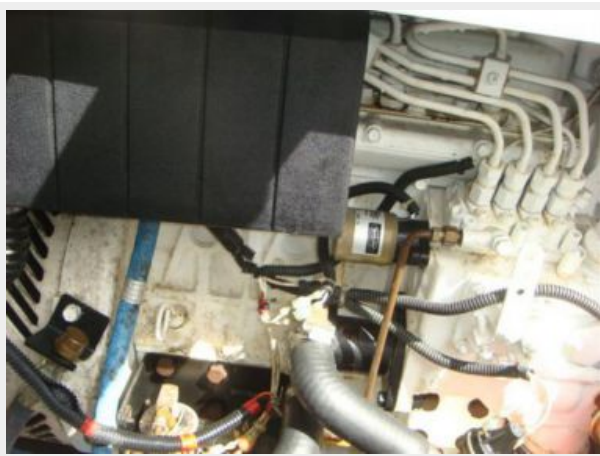
45' Meridian Electrical Panel



45' Meridian Generator Soundbox



45' Meridian Generator



45' Meridian Battery Charger



45' Meridian Layout



КОНТАКТЫ

Андрей Шестаков (Andrey Shestakov) – ведущий яхтенный брокер отдела продаж яхт и судов компании Shestakov Yacht Sales Inc. Официальный представитель Shestakov Yacht Sales Inc. для русскоговорящих клиентов в центральном офисе компании в Майами/Форт Лодердейл/Флорида/США.

Контактная информация

Email: andrey@shestakovyachtsales.com

Web: shestakovyachtsales.com

Телефоны

Краснодарский край: **+7(918)465-66-44**

США, Майами, Флорида: **+1(954)274-4435**

Время работы

Понедельник – Суббота: **9:00 - 21:00**
EDT

Воскресенье: **Закрито**

Адрес



Harbour Towne Marina, 850 NE 3rd St,
STE 213, Dania, FL 33004