

## MARITIMO M50 — MARITIMO



**Builder:** MARITIMO

**Year Built:** 2010

**Model:** Motor Yacht

**Price:** PRICE ON APPLICATION

**Location:** United States

**LOA:** 50' 0" (15.24m)

**Beam:** 17' 1" (5.21m)

**Min Draft:** 4' 3" (1.30m)

**Max Draft:** 4' 3" (1.30m)

**Cruise Speed:** 18 Kts. (21 MPH)

**Max Speed:** 30 Kts. (35 MPH)

Our experienced yacht broker, Andrey Shestakov, will help you choose and buy a yacht that best suits your needs **Maritimo M50 — MARITIMO** from our catalogue. Presently, at Shestakov Yacht Sales Inc., we have a wide variety of yachts available on our sale's list. We also work in close contact with all the big yacht manufacturers from all over the world.

If you would like to buy a yacht **Maritimo M50 — MARITIMO** or would like help answering any questions concerning purchasing, selling or chartering a yacht, please call **+1(954)274-4435**

---

# TABLE OF CONTENTS

---

TABLE OF CONTENTS	2
SPECIFICATIONS	3
Overview	3
Basic Information	3
Dimensions	3
Speed, Capacities and Weight	4
Accommodations	4
Hull and Deck Information	4
Engine Information	4
DETAILED INFORMATION	5
Manufacturer Provided Description	5
Layout	5
Other Special Informaiton	6
Disclaimer	6
Exclusions	6
Disclaimer	6
PHOTOS	8
CONTACTS	13
Contact details	13
Telephones	13
Office hours	13
Address	13

---

# SPECIFICATIONS

---

## Overview

---

Maritimo's name is synonymous with quality. This Offshore model is a saltwater thoroughbred with a very stable feel and one that cuts the water well. After selling Riviera yachts then many years of building offshore racing boats, Bill Barry-Cotter's yacht building experience behind these boats is nothing less than awesome! The 500 Offshore Maritimo is a truly remarkable vessel which you will find a pleasure to drive and own. She has a three sided hardtop that gives you excellent visibility in all weather conditions from the enclosed bridge. The boat is also equipped with a Seekeeper stabilizing system that is mounted inside the engine room. The Seekeeper gives you a very stable ride both underway and at rest. The nice part about Seekeeper for the Northwest is you have nothing hanging from the bottom of the boat so no danger of damage due to hitting a dead head.

This boat will make a terrific boat for the family that likes to cruise and fish together. It has a comfortable saloon and a huge galley and plenty of room to sleep 6 or more people. This boat will be a great opportunity if you'd like to buy a boat that will save you several hundred thousand dollars compared to a new purchase. This price was just reduced by over \$100,000.

## Basic Information

---

**Category:** Motor Yacht

**Sub Category:** Offshore

**Model Year:** 2010

**Year Built:** 2010

**Country:** United States

**Fly Bridge:** Yes

**Cockpit:** Yes

## Dimensions

---

**LOA:** 50' 0" (15.24m)

**Beam:** 17' 1" (5.21m)

**Min Draft:** 4' 3" (1.30m)

**Max Draft:** 4' 3" (1.30m)

---

## Speed, Capacities and Weight

---

**Cruise Speed:** 18 Kts. (21 MPH)

**Cruise Speed RPM:** 1700 Kts.

**Max Speed:** 30 Kts. (35 MPH)

**Max Speed RPM:** 2350 Kts.

**Displacement:** 49606 Pounds

**Water Capacity:** 422 Gallons

**Holding Tank:** 80 Gallons

**Fuel Capacity:** 925 Gallons

---

## Accommodations

---

**Total Cabins:** 2

**Total Berths:** 5

**Total Heads:** 2

---

## Hull and Deck Information

---

**Hull Material:** Fiberglass

**Hull Finish:** Plastic

---

## Engine Information

---

**Manufacturer:** Caterpillar

**Model:** c12

**Engine Type:** Inboard

**Fuel Type:** Diesel

---

# DETAILED INFORMATION

---

## Manufacturer Provided Description

---

Maritimo's awesome 'battlewagon', the 550 Convertible, has won its colours as 'the Big Gun' on the game fishing tournament scene, so the company has introduced the 'Son of a Gun', the smaller and more compact Maritimo 500 Offshore Convertible. The Maritimo 500 Offshore Convertible offers an interior similar to that of the Maritimo 550 and is only slightly smaller in the main saloon area and cockpit than the 550. It also features Maritimo's 'trademark', the convenient internal staircase to the flying bridge, enclosed on three sides, with clears aft. When 'action stations' are called, skippers will appreciate the aft helm and cockpit controls. The galley has been placed conveniently on the same level as the salon. Forward, in a testament to clever design, the 500 Convertible offers accommodations almost the equal of the larger 550. And with dual Caterpillar C12 engines everyone can count on dependable 1400 + hp. to get you around.

## Layout

---

The Maritimo 500 is a well laid out yacht with many comforts. Some of the most outstanding features are the wide side decks for crew and family to move safely around the boat. The cockpit mezzanine seating, which is not seen on boats of this size. A large cockpit and live bait tank. The aft control station makes it easy to dock the boat or watch whats going on in the cockpit when fishing. Rod holders and down rigger outlets are set so you can go deep for the big ones. A cable master to for easy storage of the power cord. Salt and fresh water wash down. A large deep freezer along with other dry storage areas. A "in deck" fish storage locker can double for lazzerett storage as well. You will also find a fresh water sink for clean up and it opens up to the engine room. Not an inch of space is wasted in the aft deck/cockpit area.

The saloon is set up for relaxation after a hard day on the water chasing fish or cruising to a wonderful private moorage spot. The Mid Galley has a one foot extension added for additional storage. The galley is well equipped with a pantry full height , large frig./freezer, dishwasher, solid electric cooktop and large stainless sink. Under the stairs to the bridge is more storage and an additional bar frig. In the front of the salon is a 40' flat screen T.V. and a cabinet with a Bose entertainment center.

Below decks is a ensuite master stateroom to the Port Side. Under the master bunk you will find more hanging locker space as well as built in drawer storage. Across the hall from that is a bunk room with storage and the washer/dryer combo unit. The forward stateroom has two large births, a double and single bunks, that are ensuite to the second full head with sink, toilet and shower. This stateroom has plenty of hanging locker and drawer space. This layout is a very open floor plan and makes the boat feel much larger. The bunk room shares this head.

The fly bridge is a great place for everyone to cruise with the captain.. The hard sided enclosure is quite and comfortable. The inside stairs to the bridge allow all doors to be closed when running

and that keeps the bridge quite and allows you to control the tempter with the air-conditioning system. The two aft Release Helm Seats are the top of the line and what is called "Yacht Jewellery" and are a two crown jewels of the helm. The helm is aft on the bridge for a better look at the cockpit when the action starts. A large "L" settee is forward of the helm with a large teak table. The table makes down into an additional sleeping are. The bridge is heated and air-conditioned for cruising comfort in any weather. The large windshields are equipped with large wipers and defrosting vents. Rain or shine you will have a great look at the water in front of you. The large side windows keep the wind off when your under way and allow for an exceptional view of the horizon. The soft back opens for easy communication to the cockpit and zips up to enclose the bridge to keep it heated or cool. The helm is wide and tall and holds a full compliment of nav. equipment.

---

## Other Special Informaiton

---

- \*Fresh Motors.
- \*A new interior .
- \*A Sat. T.V. system .
- \*The boat is fresh and clean from the bottom to the top.
- \* Upgraded electronics.
- \* A new swim step was purchased and installed Jan. 2015

---

## Disclaimer

---

The Company offers the details of this vessel in good faith but cannot guarantee or warrant the accuracy of this information nor warrant the condition of the vessel. A buyer should instruct his agents, or his surveyors, to investigate such details as the buyer desires validated. This vessel is offered subject to prior sale, price change, or withdrawal without notice.

---

## Exclusions

---

Owner's personal belongings.

---

## Disclaimer

---

The Company offers the details of this vessel or yacht in good faith but cannot guarantee or warrant the accuracy of this information nor warrant the condition of the vessel. A buyer should instruct his representatives, agents, or his surveyors, to investigate such details as the buyer desires validated. This vessel or yacht is offered subject to prior sale, price change, or withdrawal

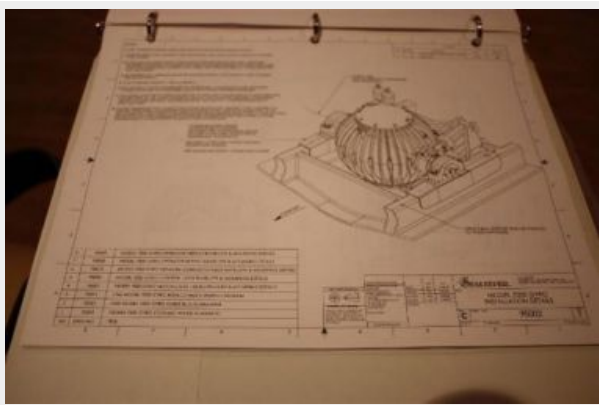
without notice.

# PHOTOS













# CONTACTS

---

Andrey Shestakov, leading yacht broker of the sales department of Shestakov Yacht Sales Inc. Shestakov Yacht Sales Inc., the official representative of the Miami/Fort Lauderdale FL headquarters.

## Contact details

---

Email: [andrey@shestakovyachtsales.com](mailto:andrey@shestakovyachtsales.com)

Web: [shestakovyachtsales.com/en/](http://shestakovyachtsales.com/en/)

## Telephones

---

USA: +1(954)274-4435

## Office hours

---

Monday – Saturday: **9:00 - 21:00** EDT

Sunday: **closed**

## Address

---



Harbour Towne Marina, 850 NE 3rd St,  
STE 213, Dania, FL 33004