

ANTARES — WESTPORT



Судостроитель: WESTPORT

Год постройки: 2008

Модель: Моторная яхта

Цена: **ЦЕНА ЯХТЫ ПО ЗАПРОСУ**

Местонахождение: United States

Длина общая: 130' 0" (39.62m)

Ширина: 26' 0" (7.92m)

Макс. осадка: 6' 6" (1.98m)

Крейс. скорость: 19 Kts. (22 MPH)

Макс. скорость: 25 Kts. (29 MPH)

Купить **ANTARES — WESTPORT** а также выбрать подходящую вам яхту из нашего каталога яхт вам поможет опытный яхтенный брокер Андрей Шестаков. На сегодняшний день компания **Shestakov Yacht Sales Inc.** имеет большое количество яхт в собственном списке продаж, а также тесно сотрудничает со всеми крупными яхтенными производителями по всему миру.

Для того чтобы купить яхту **ANTARES — WESTPORT** а также проконсультироваться по любому вопросу связанному с покупкой, продажей, чартером яхт позвоните по телефону **+7(918)465-66-44**.

ОГЛАВЛЕНИЕ

| | |
|-------------------------------|----|
| ОГЛАВЛЕНИЕ | 2 |
| ХАРАКТЕРИСТИКИ | 4 |
| Обзор | 4 |
| Основная информация | 4 |
| Размеры | 4 |
| Скорость, вместимость и масса | 4 |
| Размещение | 4 |
| Корпус и палуба | 5 |
| Информация о двигателе | 5 |
| ПОДРОБНОЕ ОПИСАНИЕ | 6 |
| OVERVIEW | 6 |
| WALKTHROUGH | 6 |
| MACHINERY | 7 |
| COMMUNICATION AND NAVIGATION | 8 |
| ENTERTAINMENT | 8 |
| GALLEY AND LAUNDRY | 8 |
| TENDERS AND TOYS | 8 |
| DECK EQUIPMENT | 9 |
| SAFETY AND FIRE PROTECTION | 9 |
| BROKER COMMENTS | 9 |
| Исключения | 9 |
| Отказ от ответственности | 9 |
| ФОТОГРАФИИ | 10 |
| Main Salon | 11 |
| Formal Dining | 11 |
| Galley Dining | 12 |
| Galley | 12 |
| Pilothouse | 12 |

| | |
|------------------------|-----------|
| Sky Lounge | 12 |
| Butler Pantry | 12 |
| Bar | 12 |
| Master Bath | 13 |
| Master Stateroom | 13 |
| King Guest Stateroom | 13 |
| King Guest Stateroom | 13 |
| Double Guest Stateroom | 13 |
| Double Guest Stateroom | 13 |
| Guest Bath | 14 |
| Guest Bath | 14 |
| Aft Deck | 14 |
| Guest Bath | 14 |
| Sundeck | 14 |
| Sundeck | 14 |
| Jacuzzi/Seating | 15 |
| Bow Seating | 15 |
| Engine Room | 15 |
| Engine Room | 15 |
| Layout | 15 |
| Engine Room | 15 |
| КОНТАКТЫ | 16 |
| Контактная информация | 16 |
| Телефоны | 16 |
| Время работы | 16 |
| Адрес | 16 |

ХАРАКТЕРИСТИКИ

Обзор

Основная информация

Тип судна: Моторная яхта

Модельный год: 2008

Год постройки: 2008

Страна: United States

Верх: Hardtop

Размеры

Длина общая: 130' 0" (39.62m)

Ширина: 26' 0" (7.92m)

Макс. осадка: 6' 6" (1.98m)

Скорость, вместимость и масса

Крейс. скорость: 19 Kts. (22 MPH)

Макс. скорость: 25 Kts. (29 MPH)

Вместимость воды: 1600 Gallons

Объем топливного бака: 9940 Gallons

Размещение

Всего кают: 5

Спальные места: 10

Всего ком. состава: 7

Каюты экипажа: 4

Койки экипажа: 7

Корпус и палуба

Материал корпуса: GRP

Материал палубы: Teak

Комплектация корпуса: Semi-Displacement

Цвет корпуса: White

Информация о двигателе

Двигатели: 2

Производитель: MTU

Модель: 12V4000

Тип двигателя: Inboard

Тип топлива: Diesel

ПОДРОБНОЕ ОПИСАНИЕ

OVERVIEW

ANTARES, an exceptional 130' Westport with many upgrades. She is hull number 25, built in 2008 by a seasoned yachtsman and a superb project team. Her interior wood package is a beautiful raised panel Mahogany which is complimented by her warm and light décor.

ANTARES was built with a number of special upgrades that include “Zero Speed” stabilizers. The owner opted for the larger fins for better stability and an upgraded touchscreen control panel. It has the much desired hardtop and custom storage throughout the vessel including a custom built wine storage under the master berth. The Crestron entertainment system has iPad minis for a modern and streamlined operating system. It also has been synced with the lights, electric blinds throughout the vessel and the CCTV system. **ANTARES** has had the same owner since the build that has preserved her to the highest standard. She has never been chartered and is meticulously maintained by her seven crew. The Chief Engineer and Chief Stewardess have both been on board since the build.

WALKTHROUGH

ANTARES has the look and feel of a brand new yacht. Entering from starboard, one will reach the formal foyer, laid with a beautiful marble floor. There is also a well-appointed, marble day head. Moving aft from the foyer one will enter the formal dining area. The dining table has extra leaves that can be set to accommodate 10 guests or removed for a more intimate setting. The main salon is appointed with beautiful furnishings, L-shaped settee, three comfortable swivel chairs and a coffee table. There is an additional chair and ottoman as well as a table with two chairs perfect for a light snack for two or an intimate game of chess. The main salon and dining area have ample storage with many custom features and excellent serving areas. **ANTARES** has beautiful well-kept Mahogany wood with granite countertops. It is a comfortable yet elegant setting. Forward to port is the state of the art galley with professional appliances including a stainless steel overhead vent hood for the six burner glass top stove and granite counter tops. There is ample storage throughout and a new side-by-side refrigerator. One of the best features is the U-shaped dinette that is perfect for a casual breakfast or lunch. There are full height windows the length of the galley allowing for perfect viewing while underway or at the dock. The galley has a door at the entrance that can be closed to keep noise and smells from entering other areas of the vessel. This was an add on by the owner. Further forward is the on-deck master stateroom which has a centerline king size bed, a high quality mattress, and an upholstered headboard. The master has a desk/vanity, ample storage, drawers and walk-in closet. The master “His and Her” head, has marble tile, a whirlpool bath, a separate large glass-enclosed shower, and two more closets. There is a custom built wine storage under the master bed which can be accessed with an easy open lift. The master is equipped with electric blinds and attachable black out shades. Mid-ship stairs lead down to the four guest staterooms. There are laundry facilities, located off the lower foyer, equipped with new Miele Professional Series washer and dryer. On this deck, one will find two VIP cabins with king berths and two guest

cabins with twin berths. There is a custom concealed bureau/computer desk in the starboard twin cabin. Each stateroom is elegantly decorated and has an en suite head with enclosed shower. All rooms have the Crestron entertainment system with the Kaleidescape system, capable of storing over 1000 movies and music. From the formal foyer one will go up a spiral staircase to the upper landing that will take one aft to the sky lounge or forward to the pilothouse. The pilothouse has a raised semi-circular seating area for all guests to enjoy the view while cruising. There is updated navigation equipment with an Intelisea vessel monitoring system, and a captain's office with a communications center. Custom built filing cabinet and bookshelf concealed within the seating area. There are ample walk-around side decks with pilothouse entry doors allowing for easy movement around the deck and entire vessel. There is a staircase running centerline going forward from the Portuguese bridge down to the foredeck, leading to a circular seating area (nook), with excellent visibility while cruising. Aft from the upper landing one enters into the sky lounge where you are surrounded by full length windows for excellent views and natural light. There is a bar with two bar stools, an L-shaped settee, and a leather top table making for a comfortable seating area. One also finds in the area a handsome table with four chairs. The sky lounge is a beautiful area for entertaining, watching movies or an intimate dinner. There is a custom built in Butler Pantry in the sky lounge in place of the day head. This space was custom designed for easy access and excellent storage for table décor and linens. It proved an asset. Moving aft from the sky lounge through the large double sliding doors, one will enter the boat deck. Here you will find a beautiful built in settee with two chairs and tables for dining. There is a custom made leaf that can be added to make the two tables into one large table. In this configuration one can accommodate seating for 10 guests. To starboard are steps leading from the aft deck to the boat deck. Forward of that is a 6-8 person Jacuzzi hot tub. From this area one can go up another set of stairs to the sundeck or walk forward on either side of the walk-around decks to the Portuguese bridge. The sundeck features a large wet bar with four stools that is covered by a custom hardtop. There are two built-in seating areas forward with two beautiful tables, ice maker, large barbeque and a large sunning area with adjustable chaise lounges. There is also an auxiliary helm on this deck. Moving back down to the aft deck, one can enter the main salon through sliding double doors. This beautiful and spacious aft deck features a large circular teak table that seats ten guests. There is a built-in settee with a table and two lounge chairs to starboard. There is a full wet bar with granite counters, built in storage for glassware, ice machine, and Sub-Zero refrigerator drawer and freezer drawer. The bar has three bar stools and a large TV above on the bulkhead. The aft deck is designed to be well protected from the elements by its overhang and by custom made weather screens. From the aft deck one can go down a set of stairs on either side of the settee to a large swim platform that makes for easy access to the water for swimming or water sports. The aft deck also gives one access to the passerelle for convenient boarding while Med-Moored or port side to.

MACHINERY

Main Engines Engine Type: MTU 12V4000 Engine Hours: 4550 hours, November 2015
Gearboxes for Main Engines: ZF 4650 **Speed/Consumption per Hours/Range/RPM**
Maximum: 25 knots, 230 @ 2100 rpm Cruising: 19 knots, 175 @ 1800 rpm Economical: 13 knots,

65 @1250 rpm **Generators & Electricity** Output: 65 kW Generators: 2X Northern Lights generators, P: 10,075 hrs./S: 10,136 hrs, November 2015 Generator Fuel consumption: 6 gal/hr under full load each Shore Power: 480 30 100 amp or 208/240 30 100 amp (ASEA 25 converters) **Batteries** Batteries: Lifeline Main Engine Starting: Lifeline Generator Starting: Lifeline **Air Conditioning** Type: Aqua Air 20 ton system **Other Machinery** Watermakers: 2X Sea Recovery Aqua Whisper 60gph each Stabilizers: NIAD Model 521 Zero Speeds with upgraded 25.1 sq. ft. fins Bow & Stern Thrusters: American Bow thruster 16" 75hp hydraulic dual prop Steering System: Jastram Commercial Power Steering System Fuel Separator & Filtration: Alpha Laval fuel polisher (also fuel transfer pump with filter) Sewage System: Headhunter USCG Type II MSD Fresh Water Filtration Lube Oil Capacity: 178 gallon Waste Oil Capacity: 178 gallon

COMMUNICATION AND NAVIGATION

Communication Systems SATcom: KVH Tracphone Fleet 33 Telephone System: PBX Panasonic TDA100 SSB: ICOM M802 VHF: ICOM M602 (2x Pilothouse, 1x Crew lounge, 1x remote station in Main Galley) Cellular Phone System: Telular GSM Inmarsat C: Furuno Felcom 15 **Navigation Systems** LED light on mast to illuminate boat deck Radars: 2x Furuno RPU 013 AIS: Furuno FA-150 Intelesea Monitoring System Gyrocompass: Simrad RCG 85 Magnetic Compass: Ritchie Globemaster F-600 Auto Pilot: Simrad AP-50 Depth Sounder: B&G H1000/Furuno FCV-1200L with color display GPS: 2x Furuno GP150 Ships Computer: Transass Navisailor 4000/Nobeltec Trident Wind/Speed Log: B&G H3000 Navtex: NX-700 Whistle/Horn: Kahlenberg M-511C/D Whistle control

ENTERTAINMENT

Video Equipment/Audio Equipment All new AV with iPad Mini Controls Kaleidescape System Sat TV

GALLEY AND LAUNDRY

Main Galley Equipment Ovens: 2x Gaggenau Cooktop: 6-burner Viking Professional with Zephyr Ventilation System Dishwasher: Asko D3251 Refrigeration/Freezer: 48" Kitchen Aid, 2014 **Crew Galley/Mess Equipment** Refrigeration: Sub Zero undercounter refrigerator, 2014 **Additional Galley Equipment** Refrigeration/Freezer: Traulsen Commercial located in lazarette 2x Sub Zero refrigerator/freezer drawers located on aft deck Ice machine located on aft deck Whirlpool ice maker located on flybridge Sub Zero refrigerator freezer located in sky lounge **Laundry Equipment** 1x Miele Professional washing machine (PW6065 Plus), 2014 1x Miele Professional dryer (PT7136 Plus), 2014 **Crew Mess:** 1x Miele Professional washing machine (PW6065 Plus), 2014 1x Miele Professional dryer (PT7136 Plus), 2014

TENDERS AND TOYS

Tenders 2008 18' Nautica Wide-body 115hp 4-stroke Yamaha 2008 14' Deluxe Nautica 60hp 4-stroke Yamaha

DECK EQUIPMENT

Upgraded bow and Freeman hatch from non skid to teak decking Additional underwater lights totaling 12 Additional overhead lighting to the fore deck area Custom stainless steel gate on the aft deck leading to the swim platform Anchor Windlass: Maxwell 6000 Aft Capstans; Maxwell VC3500 Anchors: Dual Poole style 270 KG polished stainless Anchor chain: 400/300 ft. 5/8" Davit: Nautical Structures HCC 2000EX Passerelle: Bensenzoni

SAFETY AND FIRE PROTECTION

Security Equipment CCTV System: Elbex Cameras: 3x Elbex High Resolution Color Pan/Tilt/Zoom - Starboard main deck, Aft main deck and Engine room Monitors: 1x 15" LCD in Pilothouse and distributed throughout on-board A/V System **Safety Equipment** Life Rafts: 2x Zodiac USCG 10 passenger Life Rings: 4 EPIRBs: 1 Medical Equipment: Full commercial medical kit with oxygen and defibrillator

BROKER COMMENTS

ANTARES is the newest Westport 130' to hit the market and is very much worth presenting to your clients who are interested in a quality vessel that is found in "Like New Condition". She has been kept in perfect condition by her seven very talented Captain and Crew. **ANTARES** has the only raised panel Mahogany interior on the market today. She offers a beautiful décor. I can promise you will not be disappointed by what you see when inspecting her.

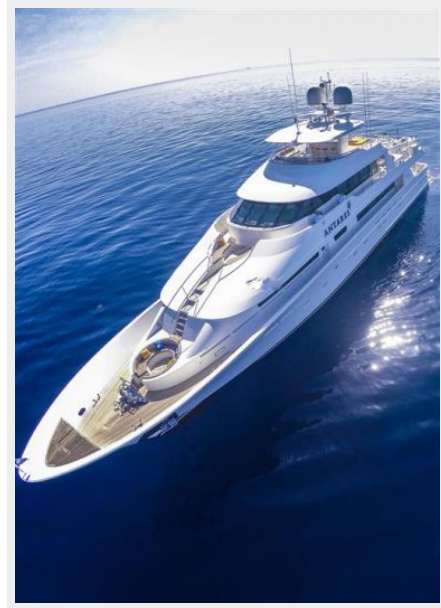
Исключения

При продаже яхты исключаются личные вещи владельца.

Отказ от ответственности

Компания предоставляет описание судна или яхты добросовестно, но не может гарантировать точность этой информации, а также не ручается за техническое состояние. Покупатель должен проинструктировать своих агентов или оценщиков исследовать представленную информацию более подробно, по собственному желанию. Продажа судна или яхты, изменение цены или снятие с продажи будет происходить без предварительного уведомления.

ФОТОГРАФИИ





Main Salon



Formal Dining



Galley Dining



Galley



Pilothouse



Sky Lounge



Butler Pantry



Bar



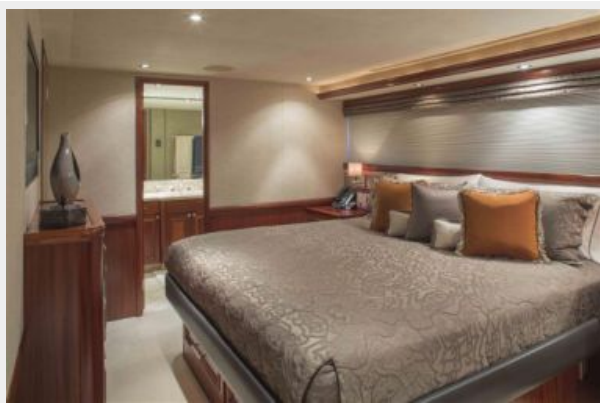
Master Stateroom



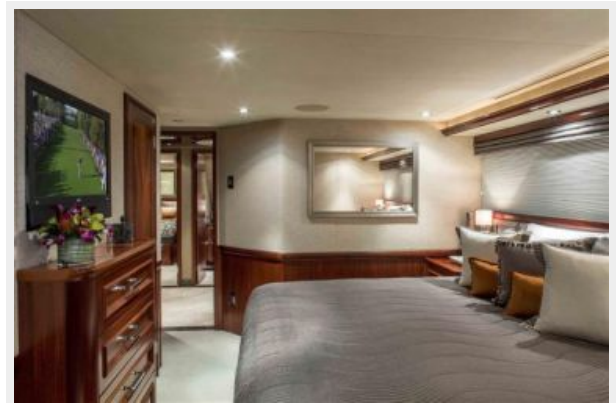
Master Bath



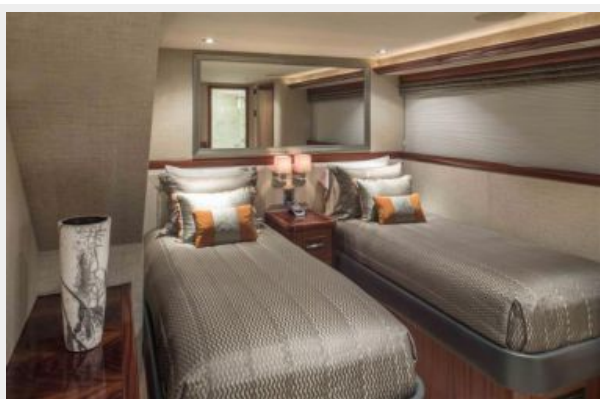
King Guest Stateroom



King Guest Stateroom



Double Guest Stateroom



Double Guest Stateroom



Guest Bath



Guest Bath



Guest Bath



Aft Deck



Sundeck



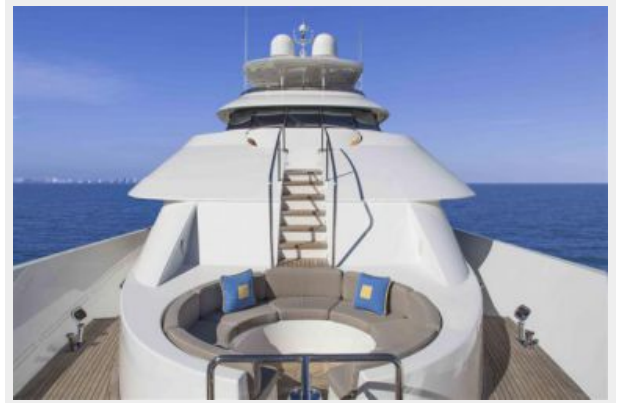
Sundeck



Jacuzzi/Seating



Bow Seating



Engine Room



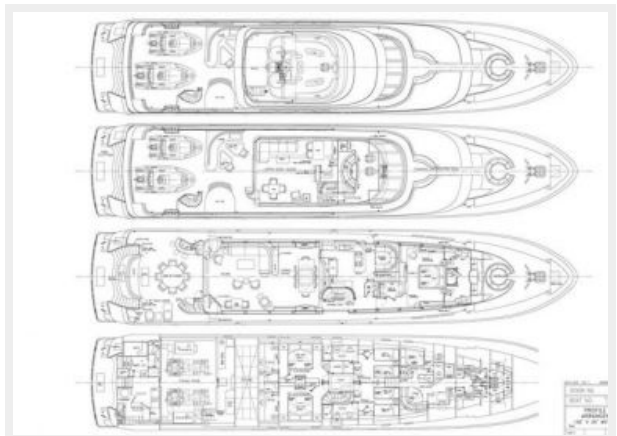
Engine Room



Engine Room



Layout



КОНТАКТЫ

Андрей Шестаков (Andrey Shestakov) – ведущий яхтенный брокер отдела продаж яхт и судов компании Shestakov Yacht Sales Inc. Официальный представитель Shestakov Yacht Sales Inc. для русскоговорящих клиентов в центральном офисе компании в Майами/Форт Лодердейл/Флорида/США.

Контактная информация

Email: andrey@shestakovyachtsales.com

Web: shestakovyachtsales.com

Телефоны

Краснодарский край: **+7(918)465-66-44**

США, Майами, Флорида: **+1(954)274-4435**

Время работы

Понедельник – Суббота: **9:00 - 21:00**
EDT

Воскресенье: **Закрето**

Адрес



Harbour Towne Marina, 850 NE 3rd St,
STE 213, Dania, FL 33004