

SEPHINA OF BEAUMARIS — OYSTER MARINE LTD



Builder: OYSTER MARINE LTD

Year Built: 1987

Model: Cruising Sailboat

Price: PRICE ON APPLICATION

Location: United Kingdom

LOA: 40' 6" (12.34m)

Beam: 12' 9" (3.89m)

Min Draft: 6' 1" (1.85m)

Our experienced yacht broker, Andrey Shestakov, will help you choose and buy a yacht that best suits your needs **SEPHINA OF BEAUMARIS — OYSTER MARINE LTD** from our catalogue. Presently, at Shestakov Yacht Sales Inc., we have a wide variety of yachts available on our sale's list. We also work in close contact with all the big yacht manufacturers from all over the world.

If you would like to buy a yacht **SEPHINA OF BEAUMARIS — OYSTER MARINE LTD** or would like help answering any questions concerning purchasing, selling or chartering a yacht, please call **+1(954)274-4435**

TABLE OF CONTENTS

TABLE OF CONTENTS	2
SPECIFICATIONS	4
Overview	4
Basic Information	4
Dimensions	4
Speed, Capacities and Weight	4
Accommodations	4
Hull and Deck Information	5
Engine Information	5
DETAILED INFORMATION	6
Broker's Comments	6
Owner's Comments	6
Construction	6
Machinery	7
Electrical Systems	7
Plumbing Systems	8
Tankage	9
Navigation Equipment	9
Domestic Equipment	10
Accommodation	11
Deck Equipment	12
Exclusions	15
Disclaimer	15
PHOTOS	16
CONTACTS	22
Contact details	22
Telephones	22
Office hours	22

Address

22

SPECIFICATIONS

Overview

Stunning 406 from 1987 although she look as as though she just popped out the egg, refitted to the enth she will not hang around.

Basic Information

Category: Cruising Sailboat

Sub Category: Center Cockpit

Model Year: 1987

Year Built: 1987

Country: United Kingdom

Dimensions

LOA: 40' 6" (12.34m)

LWL: 34' 9" (10.59m)

Beam: 12' 9" (3.89m)

Min Draft: 6' 1" (1.85m)

Speed, Capacities and Weight

Displacement: 25500.86984554 Pounds

Water Capacity: 119.934111608 Gallons

Holding Tank: 16.907011328 Gallons

Fuel Capacity: 105.6688208 Gallons

Accommodations

Total Cabins: 2

Total Berths: 6

Total Heads: 2

Hull and Deck Information

Hull Material: GRP

Deck Material: GRP

Hull Designer: Holman and Pye

Engine Information

Engines: 1

Manufacturer: Yanmar

Model: 4JH5E

Engine Type: Inboard

Fuel Type: Diesel

DETAILED INFORMATION

Broker's Comments

A yacht well known to us; we handled the sale to the current owner. She then underwent a mammoth refit leaving most of the original yacht either replaced or rebuilt - new engine, generator, electronics, paint and teak. Kitted to the enth. Described by Oyster at the start of the ARC 2013 as "Stunningly Presented".

Owner's Comments

My wife would say it was the washing machine, Aircon, island bed and power shower that made it a joy to live on. I would say it was the go anywhere ability, full sail wardrobe and the joy of owning an Oyster which is recognized around the world. SEPHINA is kitted out better than many big Oysters that we have met and at 40ft you can walk anywhere below without bumping your head. Two years ago we spent £130,000 refurbishing her and we don't regret a penny. She is "turnkey" for Ocean crossing with everything you could possibly need. We will be sad to see her go but family life moves on.

Construction

RCD Status: Our understanding is that the yacht is exempt from the essential safety requirements of Directive 94/25EC (Recreational Craft Directive) as she was built and placed into use within the EU prior to 1998.

Hull, Deck & Superstructure Construction:

- GRP hull and GRP/balsa sandwich deck.
- Hull copper-coat and epoxy treated 2012.
- Deck saloon with forward opening windows.
- Teak laid decks and Teak laid cockpit seats, New 2012.
- Anodised toerail.

Keel & Rudder:

- Fin and skeg configuration.

- Iron ballast fin keel, (8,000), encapsulated in GRP.

Machinery

Engine & Gearboxes:

- Yanmar 4jH5E four cylinder 54hp diesel (New 2013) driving a 3-blade feathering Maxprop propeller.
- Yanmar full spares kit for ocean voyaging with over £3000 of new spares (list available).

Maintenance & Performance:

- Engine bay refitted 2013 also new sound deadening and repaint.

Propulsion & Steering:

- Whitlock steering system, new bearings and cables 2012.
- Rope cutter.
- Rev counter Fuel gauge, Oil Pressure and Water Temperature 2013.
- Side power Bowthruster.

Electrical Systems

Voltage Systems:

- 12V System.

Battery Banks:

- 750 AH domestic batteries Rolls Sealed AGM, 2013.

Battery Chargers:

- 2 x Battery monitors, 2012.

- 2 x Battery charger, 2013.

Alternators:

- Engine Alternator 120 Amps with Serpentine pulley system, 2013.

Generator:

- Generator Paguro 5000 in Lazerette 3 years of Spares 2012.
- 140 watt solar panels on custom frame at davits, 2012.
- Towed generator and spare prop, 2013.

Shore Power:

- 220 ring main with RCD protection and sockets throughout.

Other Electrical:

- Galvanic Isolator, 2013.
- 2 x Invertors.
- 1 pure sine wave M Power 700W, 2012.
- 1 modified sine wave for kettle toaster etc, 1KW 2013.

Plumbing Systems

Fresh Water & Water Heating System:

- Domestic water powered by Aquajet Flowmaster microprocessor controlled pump not requiring accumulator. 2013.
- Calorifier for hot water Stainless Steel Termoinox 40L, 2013.

Watermaker:

- Water Maker 60L per hour dual 12V and 240V with 3 years of spares. Dessalator Duo 60.

Bilge Pumps:

- 2 Electric bilge pumps one automatic, 2012.
- High water bilge alarm, 2012.
- 2 manual bilge pumps.

Tankage

Fuel:

- Total capacity of 400 litres in 1 x GRP tank.

Fresh water:

- Total capacity of 454 litres in 2 x tanks.

Blackwater holding tanks:

- Custom TekTanks 64L with deck flush and pump out. Carbon Air Filter.

Navigation Equipment

- SatComs Fleet Broadband 250, 2012.
- SSB receiver, 2013.
- AIS transceiver, 2013.
- Remote Control Camera at top of mast recorded on SD card, 2012.
- CCTV in cockpit recorded on SD card, 2012.
- Boat Alarm, 2013.
- RedBox WIFI network, 2013.
- Raymarine E120 pedestal + AIS.

- Raymarine E120 Navstation +AIS.
- Raymarine A65 WiFi, 2013.
- Raymarine ST60.
- Forward looking sonar FLS2D, 2012.
- Speed Airmar Ultrasonic, 2012.
- ST70 Depth.
- ST70 Wind Close hauled.
- ST70 Wind Running.
- Raymarine ST6001 Smart pilot.
- Upgraded autopilot drive Simrad DD15 for 24 hour duty, 2012.
- Raymarine autopilot remote.
- Raymarine Wireless Auto Remote W/ Inst Repeater Smart Control E15023
- ICS Navtex.
- Icom M601 DSC VHF.
- Icom loud hailer.

Domestic Equipment

Galley:

- Washing Machine. Aqua 100F 3,5Kg Energy AA.
- Bainbridge Stove, 2013.
- Frigiboat keel cooled refrigerator and small freezer section, 2013.
- Pilot duel sensor alarm and gas control, 2012.

Heads/Showers:

- Forward Force 4 electric freshwater flushing marine heads with holding tank gauge. 2013.
- Aft Lavec Manual Heads and high pressure shower mixer 2013.

Heating & Ventilation:

- Air-conditioning Aft Cabin and Saloon and reverse cycle heating, 2012. Mermaid M16.

Entertainment:

- Stereo radio system Fusion 700 with Ipad Dock, AV input, Networked for remote control by Ipad etc. 2013.
- Samsung 32" Smart TV, 2013. Networked for remote control by Ipad etc. Apple TV for playing iTunes on TV and routing sound to Fusion 700
- Blue Ray player, 2013.
- Remote Fusion control in cockpit, 2013.

Lighting:

- 12v Deck head LED lights. All fittings replaced 2013 and converted to LED 2013. Reading lights throughout.

Accommodation

Summary of Accommodation:

- 6 berths in 2 cabins.
- Reupholstered 2012.
- Interior of teak and teak faced ply.
- Teak and holly stripe Plydeck sole. New 2013.

*Description of layout from forwards:**Forward Cabin:*

- With V berths and infill.

Forward Heads Compartment:

- With stainless steel washbasin, Freshwater flush electric heads with holding tank.
- Lockers for washbags. Teak grating.
- Washing Machine, 2012.
- Storage shelving, 2012.

Saloon:

- With settee berths and lockers and bookshelves above. Drinks locker.
- Folding saloon table custom restored with Oyster Logos inlaid 2013.
- Folding and cantilever blinds, 2013.
- Reupholstered, 2012.
- Nav area to starboard with white curved seat and large chart table.
- Galley with Bainbridge two burner cooker with grill and oven, 2013.
- Frigoboat keel cooled refrigerator and stainless steel sink, 2013.
- Electric sink pump-out, 2012.
- Pressurised water system, hot from heat calorifier and immersion heater, 2012.
- Water maker 60L per hour 2012.

Owner's Cabin:

- With double berth, shelves and hanging wardrobes.
- Reupholstered, 2012.
- Samsung 18 inch HDMI TV.
- En-suite heads with stainless steel washbasin, shower and Lavac toilet.

Deck Equipment

Rig:

- Silver anodised aluminium sloop rig.
- Double spreader, keel stepped mast.
- Detachable inner forestay, 2013.
- Folding Mast Steps, 2012.
- Twin telescopic poles, 2013.
- Gybe brake, 2013.
- Stainless steel standing rigging, 2012.
- Bamar Electric furling on both the main and genoa with remote control, fitted 2006/7 by Ocean Rigging Lymington.

Winches:

- Lewmar winches including 6 self tailing winches.
- 2 x Lewmar 54 electric primaries, 2005.

Sails:

- Sanders, 2009 - main.
- Genoa, 2009.
- Parasailor + snuffer, 2012.
- Twin headsails high cut for Twistle rig, 2013.
- Storm Jib and Tri Sail, 2013.

General:

- Side gates in life line.
- Three Lewmar deck hatches and nine alloy frame opening ports New 2012.
- Two drained lockers at aft end of cockpit with hinges lids, one for warps and one for gas

bottle stowage.

- Outboard Crane 2013.
- Navigation, Steaming/deck flood.
- Stainless stanchions and guard wires mid ship gates, 2012.
- Dorade vents, 2012.
- Transom boarding ladder.
- Cockpit table.

Anchoring & Mooring Equipment:

- Auto anchor windlass controls in cockpit.
- Warps.
- Fenders.
- Anchor windlass, electric Lewmar H3, 2012.

Covers, Canvas & Cushions:

- Spray hood/cockpit cover and Bimini, 2013.
- Cockpit cushions.

Tender & Outboard:

Safety Equipment:

- Remote launched Jonbouy, 2013.

Fire-fighting equipment:

- MultiPurpose dry extinguishers in saloon, aft and forward cabin.
- Fire blanket at stove.

- Automatic Engine Extinguisher.

Exclusions

Owner's personal belongings.

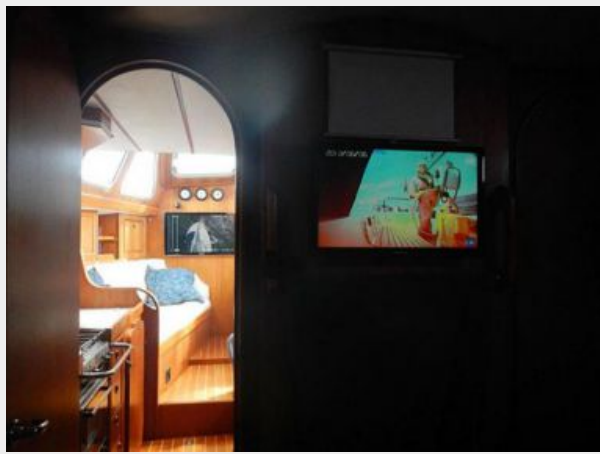
Disclaimer

The Company offers the details of this vessel or yacht in good faith but cannot guarantee or warrant the accuracy of this information nor warrant the condition of the vessel. A buyer should instruct his representatives, agents, or his surveyors, to investigate such details as the buyer desires validated. This vessel or yacht is offered subject to prior sale, price change, or withdrawal without notice.

PHOTOS

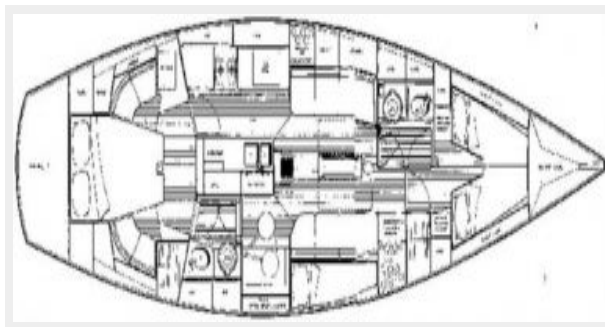












CONTACTS

Andrey Shestakov, leading yacht broker of the sales department of Shestakov Yacht Sales Inc. Shestakov Yacht Sales Inc., the official representative of the Miami/Fort Lauderdale FL headquarters.

Contact details

Email: andrey@shestakovyachtsales.com

Web: shestakovyachtsales.com/en/

Telephones

USA: +1(954)274-4435

Office hours

Monday – Saturday: **9:00 - 21:00** EDT

Sunday: **closed**

Address



Harbour Towne Marina, 850 NE 3rd St,
STE 213, Dania, FL 33004