

OUTTA CONTROL — VIKING



Builder: VIKING

Year Built: 1998

Model: Sport Fisherman

Price: PRICE ON APPLICATION

Location: United States

LOA: 55' 0" (16.76m)

Beam: 19' 9" (6.02m)

Cruise Speed: 30 Kts. (35 MPH)

Max Speed: 36 Kts. (41 MPH)

Our experienced yacht broker, Andrey Shestakov, will help you choose and buy a yacht that best suits your needs **Outta Control — VIKING** from our catalogue. Presently, at Shestakov Yacht Sales Inc., we have a wide variety of yachts available on our sale's list. We also work in close contact with all the big yacht manufacturers from all over the world.

If you would like to buy a yacht **Outta Control — VIKING** or would like help answering any questions concerning purchasing, selling or chartering a yacht, please call **+1(954)274-4435**

TABLE OF CONTENTS

TABLE OF CONTENTS	2
SPECIFICATIONS	4
Overview	4
Basic Information	4
Dimensions	4
Speed, Capacities and Weight	4
Accommodations	4
Hull and Deck Information	4
Engine Information	5
DETAILED INFORMATION	6
Overview	6
Main Salon	6
Galley	6
Master Stateroom	7
Master Head	7
Forward Stateroom	7
Guest Head	8
Starboard Stateroom	8
Companion Way	8
Deck & Hull Equipment	8
Cockpit	9
Flybridge	9
Electronics & Navigation Equipment	10
Engine & Mechanical Equipment	10
Fishing Equipment	11
Exclusions	11
Disclaimer	11
PHOTOS	12

CONTACTS	18
Contact details	18
Telephones	18
Office hours	18
Address	18

SPECIFICATIONS

Overview

PAINTED 55 Viking Convertible with ice maker, water maker, thermal imaging camera and updated electronics.

Release Marine Fighting chair with rocket launcher included, but not pictured.

Basic Information

Category: Sport Fisherman

Model Year: 1998

Year Built: 1998

Country: United States

Fly Bridge: Yes

Dimensions

LOA: 55' 0" (16.76m)

Beam: 19' 9" (6.02m)

Speed, Capacities and Weight

Cruise Speed: 30 Kts. (35 MPH)

Max Speed: 36 Kts. (41 MPH)

Displacement: 68800 Pounds

Water Capacity: 250 Gallons

Fuel Capacity: 1205 Gallons

Accommodations

Total Cabins: 3

Total Heads: 2

Hull and Deck Information

Hull Material: Fiberglass

Engine Information

Engines: 2

Manufacturer: MTU

Model: 12V183 1830 Series

Engine Type: Inboard

Fuel Type: Diesel

DETAILED INFORMATION

Overview

Sleeps 8 with 3 staterooms and convertible settee. Enter the large salon through sliding door on starboard side of the cockpit. To starboard is electrical panel, entertainment center and clear ice machine. Forward of that is a large dinette. Opposite the salon entrance on the port is a large ultra-leather L-shaped sofa with ottoman. The galley is forward on the port side as well. The master stateroom and head are amidship on the port side. The guest stateroom and head are forward with a centerline queen size berth. Opposite the master stateroom is the crew cabin with over/under berths with a connecting door to share the head with the forward stateroom. A stacked washer/dryer is in the companionway on the starboard side.

Main Salon

- New carpet (2008)
- New carpet runners (2008)
- L-Shaped ultra-leather sofa with gathered back and arm rests
- Ultra-leather ottoman with storage
- Kitchen Aid SS Clear Ice machine
- Satellite TV (salon, master, and helm)
- Amtico teak and holly flooring at salon door
- Intercom
- Cruisair A/C-SMXII
- Westinghouse Wave Talk satellite phone
- Hunter Douglass silhouette blinds
- Home entertainment center with Bose speakers
- Fold-out sleeper bed

Galley

- Sharp Carousel microwave
- Sub-Zero refrigerator and freezer (each with 2 drawers)
- Kenyon 3-burner recessed electric stove top
- Kenmore dishwasher
- Dinette with teak table and base
- Samsung LCD TV
- Garbage disposal
- Ample storage cabinets
- (3) extra large pull-out storage drawers
- Corian countertops (Sierra Aurora)

- Insta-hot water
- Amtico and holly flooring
- 110V outlet on galley backsplash
- Avanti Wine Cooler

Master Stateroom

- Queen bed
- Bedside lamps on end tables
- Bed top lifts to access bulk storage areas
- (2) storage drawers at foot of bed
- Magnavox LCD TV
- Large hanging locker
- Ample storage drawers
- Overhead lights
- Overhead hatch with screen
- (2) Reading lights
- A/C controls - Cruisair SMXII
- Stereo speakers
- JVC VCR
- Entrance credenza with storage cabinets

Master Head

- VacuFlush head
- Stall shower
- Medicine cabinet with mirror doors
- Vanity counter with sink top
- Linen closet
- Wallpaper border
- Amtico flooring

Forward Stateroom

- Centerline queen bed
- Bed top lifts to access bulk storage area
- (3) Storage drawers at foot of bed
- Overhead and reading lights
- Stereo speakers
- Port and starboard storage cabinets
- Intercom

- Hanging storage locker
- A/C controls - Cruisair SMXII
- Built-in JVC TV/VCR
- Overhead hatch with screen

Guest Head

- VacuFlush head
- Stall shower
- Medicine cabinet with mirror
- Vanity counter with sink top
- Wallpaper border
- Amtico flooring

Starboard Stateroom

- Upper and lower bunks
- Bed covers with pillow shams
- Storage under lower bunk
- (4) Drawer dresser
- Walk-in closet
- Overhead and reading lights
- Stereo speakers
- A/C controls - Cruisair SMXII
- Overhead hatch with screen

Companion Way

- Pantry storage at salon steps
- Washer (new in 2006) and dryer
- Full carpet runner
- Overhead cabinet at salon steps
- Central vacuum

Deck & Hull Equipment

- Topsides awl-grip white - 2012
- Fighting Lady yellow hull awl-grip - 2012
- Green accent stripes
- Green bottom paint

- Bow pulpit with winch
- Bow rails
- Windlass
- (3) Bomar foredeck hatches
- Transom door with flip gate
- Removable swim ladder
- Underwater lights

Cockpit

- Mezzanine Cushions for top of Tackle center
- Large fish box in sole
- Engine room access
- Transom door with flip-up gate
- Fresh and salt water washdown
- Gaff storage
- Glendinning cablemaster, starboard
- Release teak fighting chair and rocket launcher
- (3) Clearing rod holders, port and starboard
- Tackle center with drawers and prep sink
- Bait freezer
- Starboard storage locker
- Drink box in cockpit step
- Stereo speakers
- Indirect lights
- Lights in overhang
- Transom live well

Flybridge

- New enclosure - 2014
- New gauges - 2014
- Recessed radio box in console
- Forward drink box with water
- U-Line ice machine
- Port and forward seating with storage box
- Kenwood stereo system with Sirius /ipod hookup
- Stereo speakers
- Overhead lighting
- Jabsco spotlight
- Bennett trim tabs
- Engine synchronizer

- Factory hardtop
- Quartz lights
- (2) Helm chairs
- Hynautic engine controls

Electronics & Navigation Equipment

- Ritchie compass
- 2kw Sounder for NavNet
- Robertson AP300X autopilot
- Kenwood stereo with Sirius/Ipod hookup
- Remote spotlight
- Furuno 3D NavNet 12kw radar/plotter/video sounder - New 2014
- ICOM M 127 VHF
- Garmin 4612 - New 2014
- FLIR thermal imagery camera - New 2015
- Engine room camera - New 2015

Engine & Mechanical Equipment

- MTU 12V183 engines with 1150hp - 4100 hrs
- ER gauge package
- Glendinning synchronizer
- Door lock
- Auto battery charger
- Y-valve emergency bilge pumps, port and starboard
- (2) ISO boost voltage stabilizer transformers
- Awlgripped engine room
- Onan 20kw generator - 4050 hrs
- Auto bilge pumps and bilge blowers
- Power hydraulic steering
- Automatic fire extinguishing system
- Oil transfer system
- Batteries
- Hot water heater
- Eskimo ice machine
- Engine starts/stops
- Dual Racor 1000's
- Sea Star power steering system
- Dripless shaft seals
- Armstrong swim ladder
- Village Marine watermaker

- Fresh water spigot

Fishing Equipment

- Floor fishbox
- (2) Underwater lights
- Rupp outriggers
- Transom live bait well
- Release chair w/rockert launcher included, pictured cooler does not convey

Exclusions

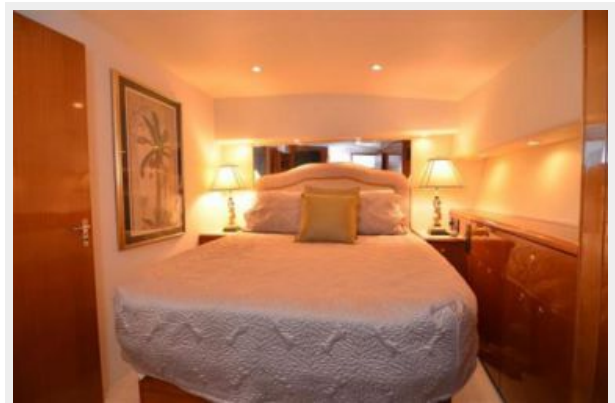
Owner's personal belongings.

Disclaimer

The Company offers the details of this vessel or yacht in good faith but cannot guarantee or warrant the accuracy of this information nor warrant the condition of the vessel. A buyer should instruct his representatives, agents, or his surveyors, to investigate such details as the buyer desires validated. This vessel or yacht is offered subject to prior sale, price change, or withdrawal without notice.

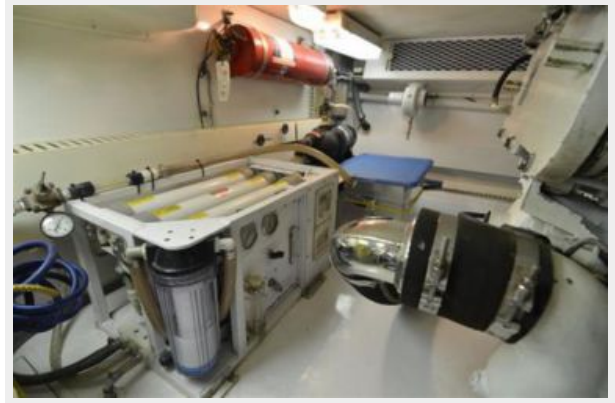
PHOTOS













CONTACTS

Andrey Shestakov, leading yacht broker of the sales department of Shestakov Yacht Sales Inc. Shestakov Yacht Sales Inc., the official representative of the Miami/Fort Lauderdale FL headquarters.

Contact details

Email: andrey@shestakovyachtsales.com

Web: shestakovyachtsales.com/en/

Telephones

USA: +1(954)274-4435

Office hours

Monday – Saturday: **9:00 - 21:00** EDT

Sunday: **closed**

Address



Harbour Towne Marina, 850 NE 3rd St,
STE 213, Dania, FL 33004