

MASHA II — SUNSEEKER



Builder: SUNSEEKER

Year Built: 2006

Model: Cruiser

Price: PRICE ON APPLICATION

Location: United States

LOA: 72' 0" (21.95m)

Beam: 17' 9" (5.41m)

Min Draft: 5' 5" (1.65m)

Our experienced yacht broker, Andrey Shestakov, will help you choose and buy a yacht that best suits your needs **MASHA II — SUNSEEKER** from our catalogue. Presently, at Shestakov Yacht Sales Inc., we have a wide variety of yachts available on our sale's list. We also work in close contact with all the big yacht manufacturers from all over the world.

If you would like to buy a yacht **MASHA II — SUNSEEKER** or would like help answering any questions concerning purchasing, selling or chartering a yacht, please call **+1(954)274-4435**

TABLE OF CONTENTS

TABLE OF CONTENTS	2
SPECIFICATIONS	4
Overview	4
Basic Information	4
Dimensions	4
Speed, Capacities and Weight	5
Accommodations	5
Hull and Deck Information	5
Engine Information	5
DETAILED INFORMATION	6
Key Features	6
Build	6
Deck	6
Bathing Platform	7
Cockpit	7
Helm Console	8
Deck Salon	8
Galley	9
Breakfast Salon	9
Forward Stateroom	10
Forward En Suite Shower Room	10
Starboard Guest Cabin	10
Starboard En Suite Shower Room/Day Head	10
Aft Master Stateroom	11
Master En Suite Shower Room	11
Engine Compartment	12
Electrical System	12
Underwater Gear	12

Systems	13
Factory Installed Options	13
Exclusions	13
Disclaimer	14
PHOTOS	15
CONTACTS	25
Contact details	25
Telephones	25
Office hours	25
Address	25

SPECIFICATIONS

Overview

WILL BE FEATURED AT PALM BEACH BOAT SHOW MARCH 26-29, 2015

The Sunseeker 72 Predator is synonymous with exquisite lines, bold power and delivering a luxurious experience at sea. Equipped with three beautifully designed staterooms your weekend getaways have a whole new meaning. Perfect for entertaining, the galley down offers the comforts of home and expands living space on the main deck. Her full beam aft master offers spacious living space, including walk in closet and private owners head. The 72 Predator is top of the line and one of the largest express boats in its class, she is sure to please.

Masha II is owned by an experienced Yachtsman who spares no expense in making sure his vessels are in perfect condition at all times. Masha II is captain maintained and it shows from her shining hull to beautiful interior woodwork. Since taking ownership she has undergone many upgrades and all engine services have been preformed by qualified service technicians.

KEY FEATURES:

NEW TOUCH SCREEN GARMIN YACHT CONTROLLER HYDRAULIC SWIM PLATFORM
ELECTRIC CANOPY FOR AFT DECK AFT DECK WET BAR INCLUDING GRILL AND
REFRIGERATION TENDER GARAGE NEW TV'S THROUGHOUT BOAT INCLUDING HI/LOW
IN SALON BOW THRUSTER SAT TV THROUGHOUT WASHER/DRYER

Basic Information

Category: Cruiser

Sub Category: Express

Model Year: 2006

Year Built: 2006

Country: United States

Dimensions

LOA: 72' 0" (21.95m)

Beam: 17' 9" (5.41m)

Min Draft: 5' 5" (1.65m)

Clearance: 16' 8" (5.08m)

Speed, Capacities and Weight

Water Capacity: 190 Gallons

Fuel Capacity: 1030 Gallons

Accommodations

Total Cabins: 3

Hull and Deck Information

Hull Material: Fiberglass

Engine Information

Engines: 2

Manufacturer: MAN

Model: V12-1360

Engine Type: Inboard

Fuel Type: Diesel

DETAILED INFORMATION

Key Features

- Hydraulic lifting platform
- Garage under sun lounger
- Electric winch with deck and cockpit controls
- 2 x stern electric winches
- Hot and cold swim shower
- Wet bar with griddle, ice maker, ice chest, hot and cold water
- Radar and autopilot
- Power-assisted steering
- Trim tabs
- Flatscreen television and DVD/CD surround system in deck & salon
- Radio/CD player
- Automatic fire extinguisher
- Automatic bilge pumps
- Slow speed generator with silent exhaust
- AC shorepower/battery charger
- Vacuum toilets with holding tank
- Fresh-water marina connection
- Teak bathing platform and steps
- Teak cockpit
- Opening hardtop - Salon
- Air conditioning
- Bow thruster
- Antifouling
- Electric Canopy

Build

- Hand-laid GRP
- Gel coat including stripes
- Vinylester skin coat with powderbound mat Stitched multi-axial reinforced single skin bottom
- Balsa cored hull topsides
- PVC foam cored deck and superstructure
- Hull stiffened with longitudinal stringers supported by transverse bulkheads and floors

Deck

- Forward sunpad (bow)
- Fittings all in stainless steel
- 8 x stainless steel deck cleats
- Pulpit and cockpit rails
- Stainless steel fendering with rubber insert Curved safety glass windscreen
- Stainless steel bow roller with anchor stop
- Stainless steel bow plate
- Delta anchor and 60m chain (galvanized)
- Electric winch with deck and cockpit controls
- Chain locker fender stowage
- Fender tie bar under anchor locker lid
- 2 x pantograph windscreen wipers 24v and washers
- Fuel fillers port and starboard
- Fresh-water filler
- IMCO navigation lights
- Ensign staff and socket
- Tender garage

Bathing Platform

- Hydraulic lifting platform
- Teak-laid bathing platform and steps
- Hot and cold swimming shower
- Fresh-water marina connection
- Dockside AC shore power connection
- Stainless steel swimming ladder

Cockpit

- Teak cockpit table
- Self draining
- Stern safety door
- Radio/CD remote control
- Cockpit speakers
- Wetbar sink with hot and cold water, ice chest, ice maker, bottle locker and cooktop
- Deeply upholstered seating around cockpit table (cream color)
- Lockers beneath seating
- Storage
-
- Rear bench seat with convertible sunbather
- Overhead cockpit lights 24v
- Low-level courtesy lights 24v

- Engine room access hatch
- Boat hook
- Electric sunshade for cockpit

Helm Console

- Double stand/sit co-pilot seat and single helm
- Chart area
- Console with bur type walnut fascia
- Hydraulic power steering
- Wood rimmed steering wheel
- Full analogue engine instrumentation
- Radar open array
- Single lever engine controls
- Autopilot
- Electric speedlog
- Depth sounder
- Rudder indicator
- Water tank gauge
- Fuel tank gauge
- VHF radio
- Trim tab controls
- Compass
- Horn
- Windscreen wipers and washers
- Glass holders
- Hand-held fire extinguisher
- Radio/CD
- Main control panel (AC/DC)
- Generator controls
- Opening side window

Deck Salon

- 3 large glass doors lead to cockpit
- Large dining/lounging area with dining table (teak)
- Scatter cushions
- Lockers beneath seating
- Large U-Shaped sofa (cream color)
- Drinks locker
- Air conditioning
- Flatscreen television with DVD/CD surround system

- Power operated opening sunroof
- Halogen overhead lighting 24v
- Low-level lighting 24v
- Double AC sockets
- Hand held fire extinguisher
- Teak decking
- Stainless steel triple opening doors to cockpit
- Satin Cherry woodwork
- Bose Surround Sound
- Bar (glass top)
- Bottle Storage

Galley

- Sink and drainer
- Electric ceramic top
- Electric refrigerator
- Electric freezer
- Microwave/Grill
- Hot and cold water
- Rubbish bin
- Cupboard and drawer stowage
- Double AC socket
- Hand-held fire extinguisher
- Opening porthole with mosquito screen and curtains
- First aid kit

Breakfast Salon

- Breakfast area with dining table
- Lockers beneath seats
- Flatscreen television
- Overhead cupboards
- Opening portholes with mosquito screen and curtains
- Halogen overhead lighting 24v
- Air conditioning
- Double AC socket
- Vacuum system
- Hand-held fire extinguisher
- Fitted carpet

Forward Stateroom

- Double berth
- Storage beneath
- Drawer in base end
- 2 x reading lights 24v
- Outboard shelving
- Overhead bedside cupboards
- Hanging wardrobe with mirrored door
- Shelved cupboard
- Halogen overhead lights 24v
- 2 x opening portholes with mosquito screens and curtains
- Deck hatch with mosquito screen
- Air conditioning
- Double AC socket
- Door to shower room
- Fitted carpet
- Flatscreen television

Forward En Suite Shower Room

- Washbasin
- Taps and accessories
- Hot and cold water
- Separate shower compartment
- Vacuum toilet
- Extractor fan
- Mirrored vanity unit
- Shelved cupboard
- Toothbrush glass holder
- Towel ring
- Overhead light
- Opening porthole with mosquito screen and blind
- Shaver socket 240/110v
- Soap dish

Starboard Guest Cabin

Twin single berths

Starboard En Suite Shower Room/Day Head

- Washbasin
- Taps and accessories
- Hot and cold water
- Separate shower compartment
- Vacuum toilet
- Extractor fan
- Mirrored vanity unit
- Shelved cupboard
- Toothbrush glass holder
- Towel ring
- Overhead light
- Opening porthole with mosquito screen and blind
- Shaver socket 240/110v
- Soap dish

Aft Master Stateroom

- Midship--full beam
- Double berth
- Drawer stowage
- 2 x reading lights 24v
- Outboard shelving
- Bedside drawers
- Walk-in hanging wardrobe
- Halogen overhead lights 24v
- 2 x large opening and 4 x fixed portholes with mosquito screen and blinds
- Air conditioning
- Double AC socket
- Fitted carpet
- Flatscreen television
- DVD player
- Settee
- Vanity unit with stool

Master En Suite Shower Room

- Washbasin
- Taps and accessories
- Hot and cold water
- Separate shower compartment
- Vacuum toilet
- Extractor fan

- Mirrored vanity unit
- Shelved cupboard
- Toothbrush glass holder
- Overhead light
- Opening porthole with mosquito screen and blind
- Shaver socket 240/110v
- Soap dish

Engine Compartment

- Soundproofing
- Engine room and forward bilge flood alarms
- 2 x automatic bilge pumps
- 2 x automatic flood pumps
- 4 x extractor fans 24v
- Manual bilge pump
- Separate fuel filters
- Fuel Tanks
- Halon system/extinguisher system

Electrical System

- Slow speed generator with underwater silent exhaust and sound box(Kohler) 1025 hours
- AC dockside connection
- Galvanic isolator
- 24v and 12v DC electrical system with full circuit breaker protection
- 6 x engine batteries 24v circuit
- 4 x domestic batteries 24v circuit
- 2 x generator batteries 12v circuit
-
- Alternator split charging system
- Remote battery switches controlled from locker in cockpit
- Battery charger for 24v circuits
- Battery charger for 12v circuits
- Water heater
- AC sockets throughout the boat
- 24v hand light and cable

Underwater Gear

- 5-blade NAB bronze propellers

- Bronze P-brackets
- 2 x 2 1/4" stainless steel Temet 25 shafts
- Dripless shaft logs with spare seals
- High-performance bronze rudders and struts
- Seawater strainers-2 x main engines/ 1 generators
- Seacocks on all underwater fittings
- Full cathodic bonding system to zinc anodes
- Heavy duty S/S hydraulic trim tabs 24v

Systems

- HRO Water Maker
- Hydraulic power steering engine driven pump
- Vacuum toilet system
- Aluminium fresh-water tank with electric sending unit
- 24v fresh-water pressure system
- Hot water tank

Factory Installed Options

- Factory Sunseeker Blue hull
- Satin Cherry wood work
- Underwater lights
- Besenzoni telescopic gangway
- Engine room camera
- Canvas package in Sunbrella material
- Additional Besenzoni helm seat in lieu of standard bench seat
- Wine cooler
- Coolmatic refrigerator in bar
- Subzero refrigerator and freezer in galley
- Custom bar in deck saloon
- Teak cabin stair treads
- Oak flooring in breakfast saloon
- Extended galley bar
- Black out blinds behind Cherry Venetian blinds in all cabins
- Crew cabin with air conditioning
- Cedar lined wardrobes in cabins
- Satellite TV

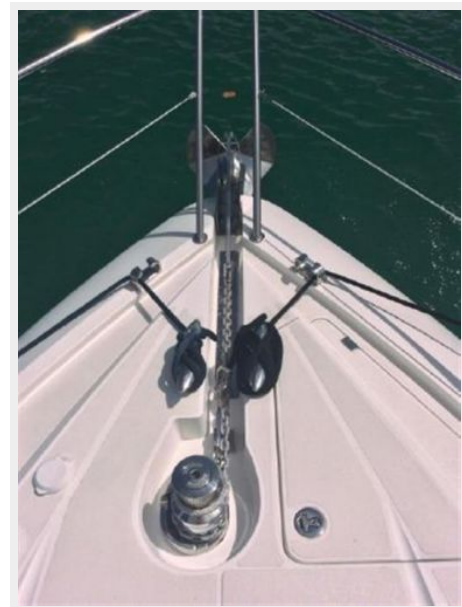
Exclusions

Owner's personal belongings.

Disclaimer

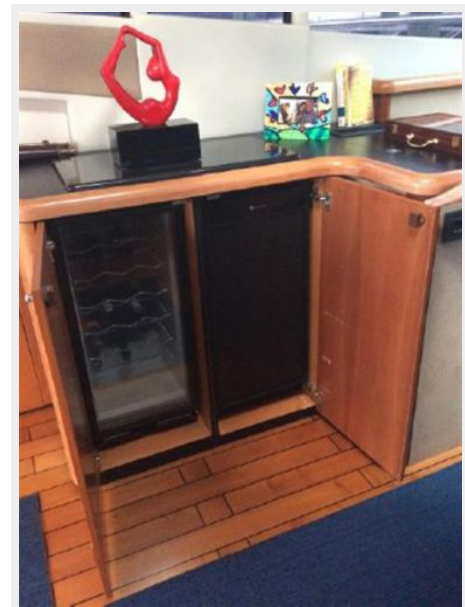
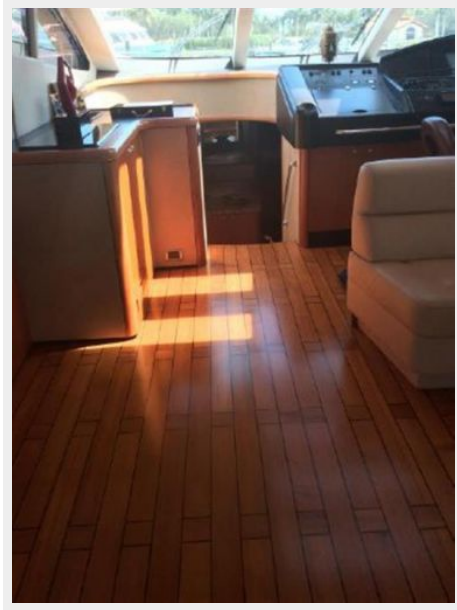
The Company offers the details of this vessel or yacht in good faith but cannot guarantee or warrant the accuracy of this information nor warrant the condition of the vessel. A buyer should instruct his representatives, agents, or his surveyors, to investigate such details as the buyer desires validated. This vessel or yacht is offered subject to prior sale, price change, or withdrawal without notice.

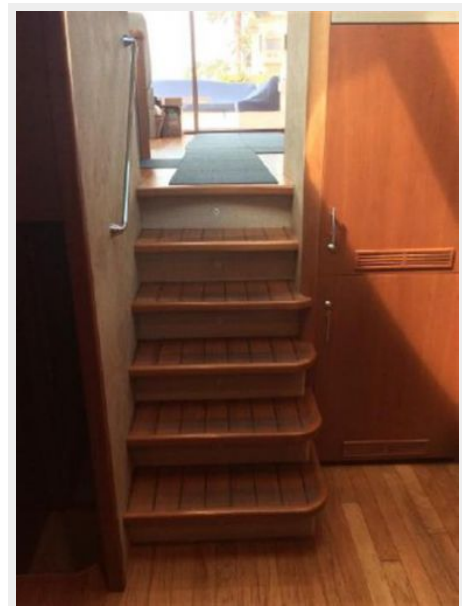
PHOTOS

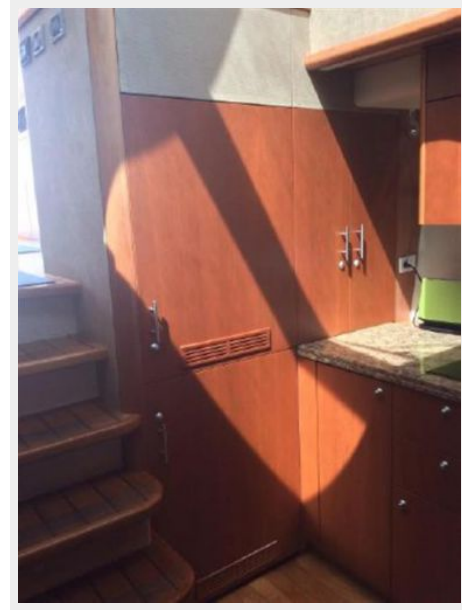
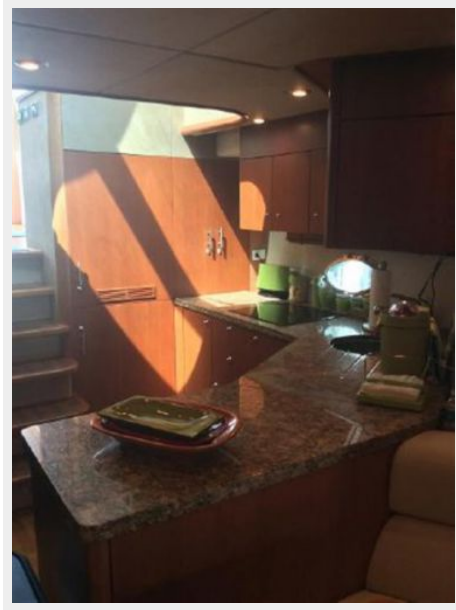


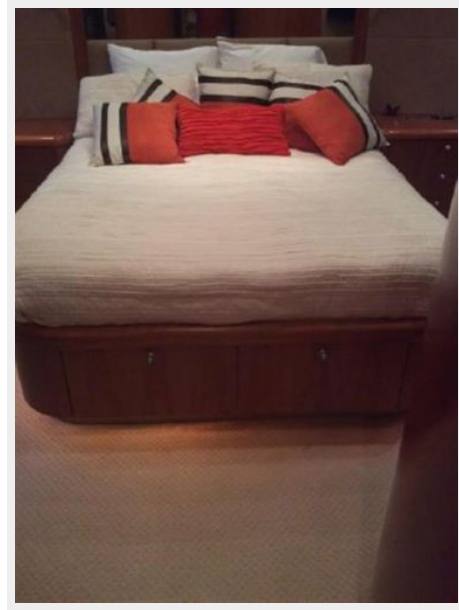


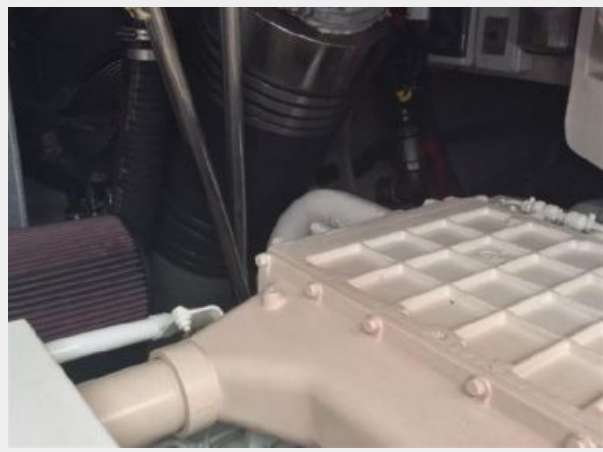
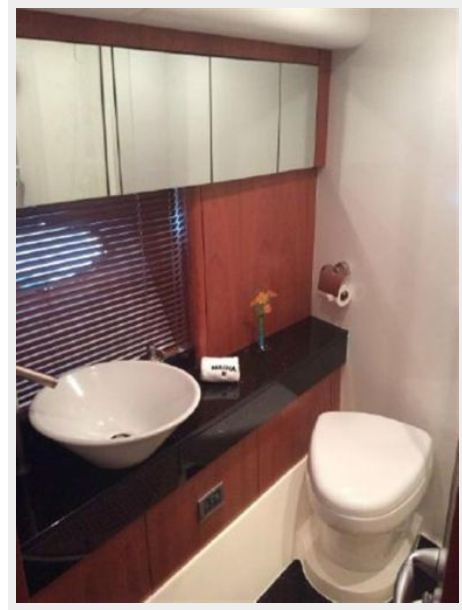
















CONTACTS

Andrey Shestakov, leading yacht broker of the sales department of Shestakov Yacht Sales Inc. Shestakov Yacht Sales Inc., the official representative of the Miami/Fort Lauderdale FL headquarters.

Contact details

Email: andrey@shestakovyachtsales.com

Web: shestakovyachtsales.com/en/

Telephones

USA: +1(954)274-4435

Office hours

Monday – Saturday: **9:00 - 21:00** EDT

Sunday: **closed**

Address



Harbour Towne Marina, 850 NE 3rd St,
STE 213, Dania, FL 33004