

MASHA II — SUNSEEKER



Судостроитель: [SUNSEEKER](#)

Год постройки: 2006

Модель: Крейсер

Цена: ЦЕНА ЯХТЫ ПО ЗАПРОСУ

Местонахождение: United States

Длина общая: 72' 0" (21.95m)

Ширина: 17' 9" (5.41m)

Мин. осадка: 5' 5" (1.65m)

Купить **MASHA II — SUNSEEKER** а также выбрать подходящую вам яхту из нашего каталога яхт вам поможет опытный яхтенный брокер Андрей Шестаков. На сегодняшний день компания **Shestakov Yacht Sales Inc.** имеет большое количество яхт в собственном списке продаж, а также тесно сотрудничает со всеми крупными яхтенными производителями по всему миру.

Для того чтобы купить яхту **MASHA II — SUNSEEKER** а также проконсультироваться по любому вопросу связанному с покупкой, продажей, чартером яхт позвоните по телефону **+7(918)465-66-44**.

ОГЛАВЛЕНИЕ

ОГЛАВЛЕНИЕ	2
ХАРАКТЕРИСТИКИ	4
Обзор	4
Основная информация	4
Размеры	4
Скорость, вместимость и масса	5
Размещение	5
Корпус и палуба	5
Информация о двигателе	5
ПОДРОБНОЕ ОПИСАНИЕ	6
Key Features	6
Build	6
Deck	6
Bathing Platform	7
Cockpit	7
Helm Console	8
Deck Salon	8
Galley	9
Breakfast Salon	9
Forward Stateroom	10
Forward En Suite Shower Room	10
Starboard Guest Cabin	10
Starboard En Suite Shower Room/Day Head	10
Aft Master Stateroom	11
Master En Suite Shower Room	11
Engine Compartment	12
Electrical System	12
Underwater Gear	12

Systems	13
Factory Installed Options	13
Исключения	13
Отказ от ответственности	14
ФОТОГРАФИИ	15
КОНТАКТЫ	25
Контактная информация	25
Телефоны	25
Время работы	25
Адрес	25

ХАРАКТЕРИСТИКИ

Обзор

WILL BE FEATURED AT PALM BEACH BOAT SHOW MARCH 26-29, 2015

The Sunseeker 72 Predator is synonymous with exquisite lines, bold power and delivering a luxurious experience at sea. Equipped with three beautifully designed staterooms your weekend getaways have a whole new meaning. Perfect for entertaining, the galley down offers the comforts of home and expands living space on the main deck. Her full beam aft master offers spacious living space, including walk in closet and private owners head. The 72 Predator is top of the line and one of the largest express boats in its class, she is sure to please.

Masha II is owned by an experienced Yachtsman who spares no expense in making sure his vessels are in perfect condition at all times. Masha II is captain maintained and it shows from her shining hull to beautiful interior woodwork. Since taking ownership she has undergone many upgrades and all engine services have been preformed by qualified service technicians.

KEY FEATURES:

NEW TOUCH SCREEN GARMIN YACHT CONTROLLER HYDRAULIC SWIM PLATFORM
ELECTRIC CANOPY FOR AFT DECK AFT DECK WET BAR INCLUDING GRILL AND
REFRIGERATION TENDER GARAGE NEW TV'S THROUGHOUT BOAT INCLUDING HI/LOW
IN SALON BOW THRUSTER SAT TV THROUGHOUT WASHER/DRYER

Основная информация

Тип судна: Крейсер

Подкатегория: Express

Модельный год: 2006

Год постройки: 2006

Страна: United States

Размеры

Длина общая: 72' 0" (21.95m)

Ширина: 17' 9" (5.41m)

Мин. осадка: 5' 5" (1.65m)

Трапы: 16' 8" (5.08m)

Скорость, вместимость и масса

Вместимость воды: 190 Gallons

Объем топливного бака: 1030 Gallons

Размещение

Всего кают: 3

Корпус и палуба

Материал корпуса: Fiberglass

Информация о двигателе

Двигатели: 2

Производитель: MAN

Модель: V12-1360

Тип двигателя: Inboard

Тип топлива: Diesel

ПОДРОБНОЕ ОПИСАНИЕ

Key Features

- Hydraulic lifting platform
- Garage under sun lounger
- Electric winch with deck and cockpit controls
- 2 x stern electric winches
- Hot and cold swim shower
- Wet bar with griddle, ice maker, ice chest, hot and cold water
- Radar and autopilot
- Power-assisted steering
- Trim tabs
- Flatscreen television and DVD/CD surround system in deck & salon
- Radio/CD player
- Automatic fire extinguisher
- Automatic bilge pumps
- Slow speed generator with silent exhaust
- AC shorepower/battery charger
- Vacuum toilets with holding tank
- Fresh-water marina connection
- Teak bathing platform and steps
- Teak cockpit
- Opening hardtop - Salon
- Air conditioning
- Bow thruster
- Antifouling
- Electric Canopy

Build

- Hand-laid GRP
- Gel coat including stripes
- Vinylester skin coat with powderbound mat Stitched multi-axial reinforced single skin bottom
- Balsa cored hull topsides
- PVC foam cored deck and superstructure
- Hull stiffened with longitudinal stringers supported by transverse bulkheads and floors

Deck

- Forward sunpad (bow)
- Fittings all in stainless steel
- 8 x stainless steel deck cleats
- Pulpit and cockpit rails
- Stainless steel fendering with rubber insert Curved safety glass windscreen
- Stainless steel bow roller with anchor stop
- Stainless steel bow plate
- Delta anchor and 60m chain (galvanized)
- Electric winch with deck and cockpit controls
- Chain locker fender stowage
- Fender tie bar under anchor locker lid
- 2 x pantograph windscreen wipers 24v and washers
- Fuel fillers port and starboard
- Fresh-water filler
- IMCO navigation lights
- Ensign staff and socket
- Tender garage

Bathing Platform

- Hydraulic lifting platform
- Teak-laid bathing platform and steps
- Hot and cold swimming shower
- Fresh-water marina connection
- Dockside AC shore power connection
- Stainless steel swimming ladder

Cockpit

- Teak cockpit table
- Self draining
- Stern safety door
- Radio/CD remote control
- Cockpit speakers
- Wetbar sink with hot and cold water, ice chest, ice maker, bottle locker and cooktop
- Deeply upholstered seating around cockpit table (cream color)
- Lockers beneath seating
- Storage
-
- Rear bench seat with convertible sunbather
- Overhead cockpit lights 24v
- Low-level courtesy lights 24v

- Engine room access hatch
- Boat hook
- Electric sunshade for cockpit

Helm Console

- Double stand/sit co-pilot seat and single helm
- Chart area
- Console with bur type walnut fascia
- Hydraulic power steering
- Wood rimmed steering wheel
- Full analogue engine instrumentation
- Radar open array
- Single lever engine controls
- Autopilot
- Electric speedlog
- Depth sounder
- Rudder indicator
- Water tank gauge
- Fuel tank gauge
- VHF radio
- Trim tab controls
- Compass
- Horn
- Windscreen wipers and washers
- Glass holders
- Hand-held fire extinguisher
- Radio/CD
- Main control panel (AC/DC)
- Generator controls
- Opening side window

Deck Salon

- 3 large glass doors lead to cockpit
- Large dining/lounging area with dining table (teak)
- Scatter cushions
- Lockers beneath seating
- Large U-Shaped sofa (cream color)
- Drinks locker
- Air conditioning
- Flatscreen television with DVD/CD surround system

- Power operated opening sunroof
- Halogen overhead lighting 24v
- Low-level lighting 24v
- Double AC sockets
- Hand held fire extinguisher
- Teak decking
- Stainless steel triple opening doors to cockpit
- Satin Cherry woodwork
- Bose Surround Sound
- Bar (glass top)
- Bottle Storage

Galley

- Sink and drainer
- Electric ceramic top
- Electric refrigerator
- Electric freezer
- Microwave/Grill
- Hot and cold water
- Rubbish bin
- Cupboard and drawer stowage
- Double AC socket
- Hand-held fire extinguisher
- Opening porthole with mosquito screen and curtains
- First aid kit

Breakfast Salon

- Breakfast area with dining table
- Lockers beneath seats
- Flatscreen television
- Overhead cupboards
- Opening portholes with mosquito screen and curtains
- Halogen overhead lighting 24v
- Air conditioning
- Double AC socket
- Vacuum system
- Hand-held fire extinguisher
- Fitted carpet

Forward Stateroom

- Double berth
- Storage beneath
- Drawer in base end
- 2 x reading lights 24v
- Outboard shelving
- Overhead bedside cupboards
- Hanging wardrobe with mirrored door
- Shelved cupboard
- Halogen overhead lights 24v
- 2 x opening portholes with mosquito screens and curtains
- Deck hatch with mosquito screen
- Air conditioning
- Double AC socket
- Door to shower room
- Fitted carpet
- Flatscreen television

Forward En Suite Shower Room

- Washbasin
- Taps and accessories
- Hot and cold water
- Separate shower compartment
- Vacuum toilet
- Extractor fan
- Mirrored vanity unit
- Shelved cupboard
- Toothbrush glass holder
- Towel ring
- Overhead light
- Opening porthole with mosquito screen and blind
- Shaver socket 240/110v
- Soap dish

Starboard Guest Cabin

Twin single berths

Starboard En Suite Shower Room/Day Head

- Washbasin
- Taps and accessories
- Hot and cold water
- Separate shower compartment
- Vacuum toilet
- Extractor fan
- Mirrored vanity unit
- Shelved cupboard
- Toothbrush glass holder
- Towel ring
- Overhead light
- Opening porthole with mosquito screen and blind
- Shaver socket 240/110v
- Soap dish

Aft Master Stateroom

- Midship--full beam
- Double berth
- Drawer stowage
- 2 x reading lights 24v
- Outboard shelving
- Bedside drawers
- Walk-in hanging wardrobe
- Halogen overhead lights 24v
- 2 x large opening and 4 x fixed portholes with mosquito screen and blinds
- Air conditioning
- Double AC socket
- Fitted carpet
- Flatscreen television
- DVD player
- Settee
- Vanity unit with stool

Master En Suite Shower Room

- Washbasin
- Taps and accessories
- Hot and cold water
- Separate shower compartment
- Vacuum toilet
- Extractor fan

- Mirrored vanity unit
- Shelved cupboard
- Toothbrush glass holder
- Overhead light
- Opening porthole with mosquito screen and blind
- Shaver socket 240/110v
- Soap dish

Engine Compartment

- Soundproofing
- Engine room and forward bilge flood alarms
- 2 x automatic bilge pumps
- 2 x automatic flood pumps
- 4 x extractor fans 24v
- Manual bilge pump
- Separate fuel filters
- Fuel Tanks
- Halon system/extinguisher system

Electrical System

- Slow speed generator with underwater silent exhaust and sound box(Kohler) 1025 hours
- AC dockside connection
- Galvanic isolator
- 24v and 12v DC electrical system with full circuit breaker protection
- 6 x engine batteries 24v circuit
- 4 x domestic batteries 24v circuit
- 2 x generator batteries 12v circuit
-
- Alternator split charging system
- Remote battery switches controlled from locker in cockpit
- Battery charger for 24v circuits
- Battery charger for 12v circuits
- Water heater
- AC sockets throughout the boat
- 24v hand light and cable

Underwater Gear

- 5-blade NAB bronze propellers

- Bronze P-brackets
- 2 x 2 1/4" stainless steel Temet 25 shafts
- Dripless shaft logs with spare seals
- High-performance bronze rudders and struts
- Seawater strainers-2 x main engines/ 1 generators
- Seacocks on all underwater fittings
- Full cathodic bonding system to zinc anodes
- Heavy duty S/S hydraulic trim tabs 24v

Systems

- HRO Water Maker
- Hydraulic power steering engine driven pump
- Vacuum toilet system
- Aluminium fresh-water tank with electric sending unit
- 24v fresh-water pressure system
- Hot water tank

Factory Installed Options

- Factory Sunseeker Blue hull
- Satin Cherry wood work
- Underwater lights
- Besenzoni telescopic gangway
- Engine room camera
- Canvas package in Sunbrella material
- Additional Besenzoni helm seat in lieu of standard bench seat
- Wine cooler
- Coolmatic refrigerator in bar
- Subzero refrigerator and freezer in galley
- Custom bar in deck saloon
- Teak cabin stair treads
- Oak flooring in breakfast saloon
- Extended galley bar
- Black out blinds behind Cherry Venetian blinds in all cabins
- Crew cabin with air conditioning
- Cedar lined wardrobes in cabins
- Satellite TV

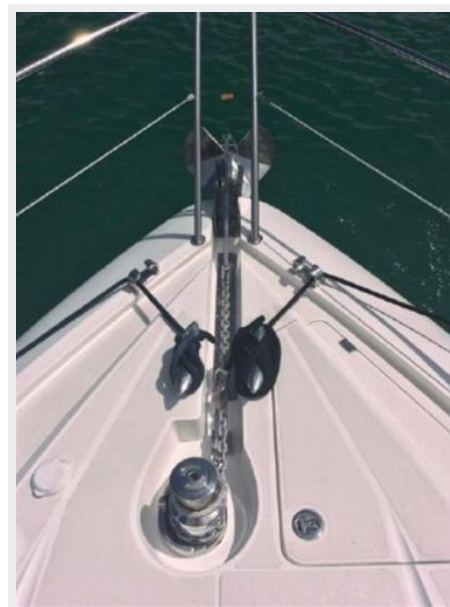
Исключения

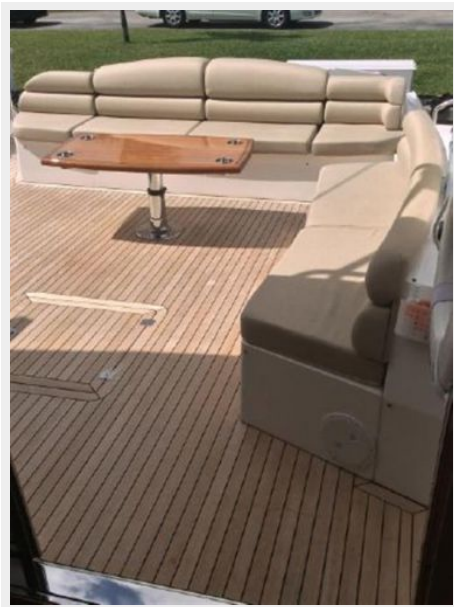
При продаже яхты исключаются личные вещи владельца.

Отказ от ответственности

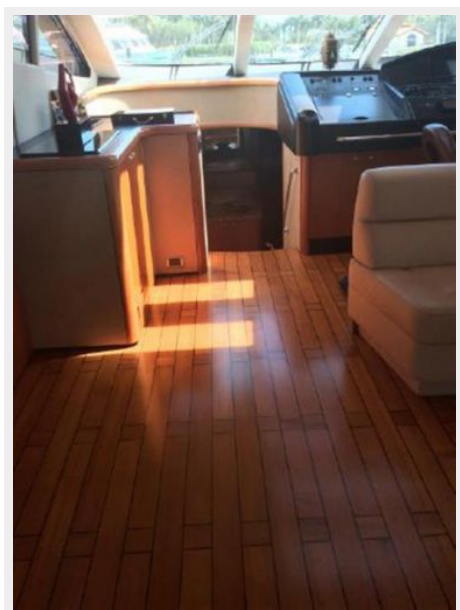
Компания предоставляет описание судна или яхты добросовестно, но не может гарантировать точность этой информации, а также не ручается за техническое состояние. Покупатель должен проинструктировать своих агентов или оценщиков исследовать представленную информацию более подробно, по собственному желанию. Продажа судна или яхты, изменение цены или снятие с продажи будет происходить без предварительного уведомления.

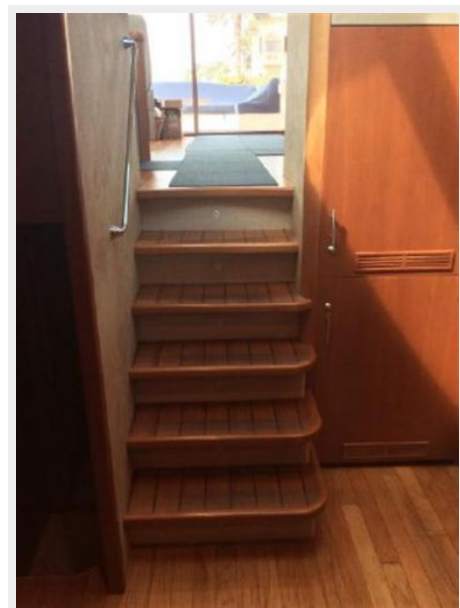
ФОТОГРАФИИ

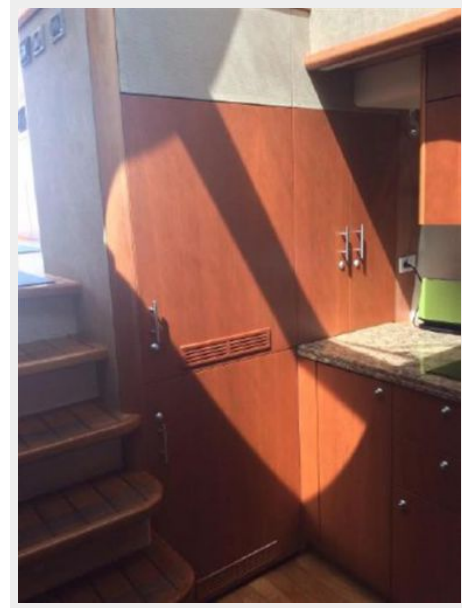
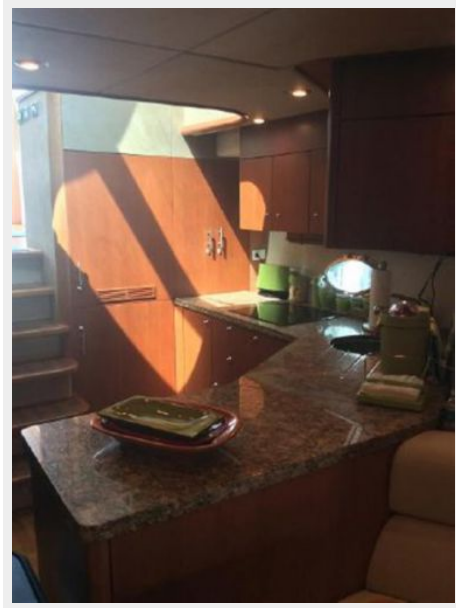


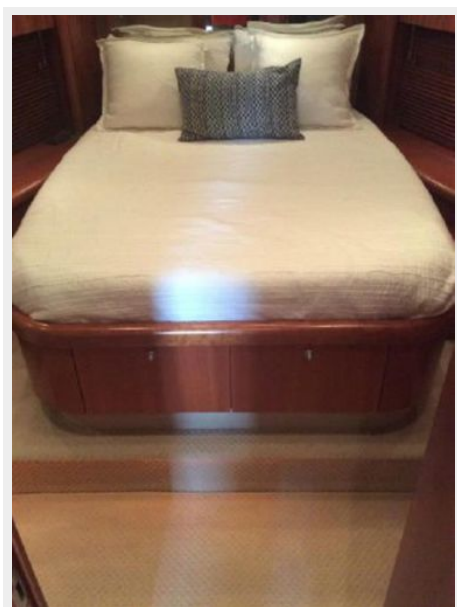
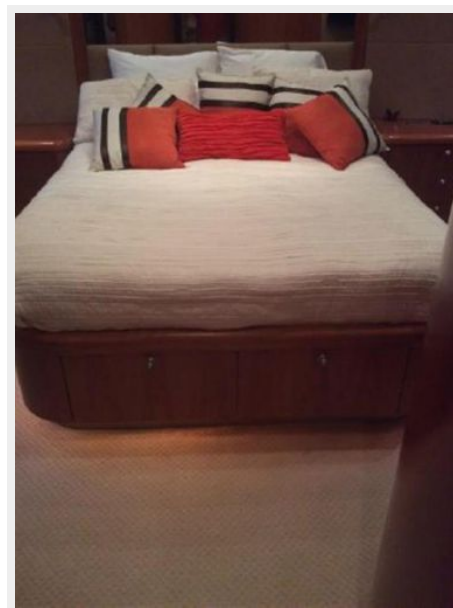


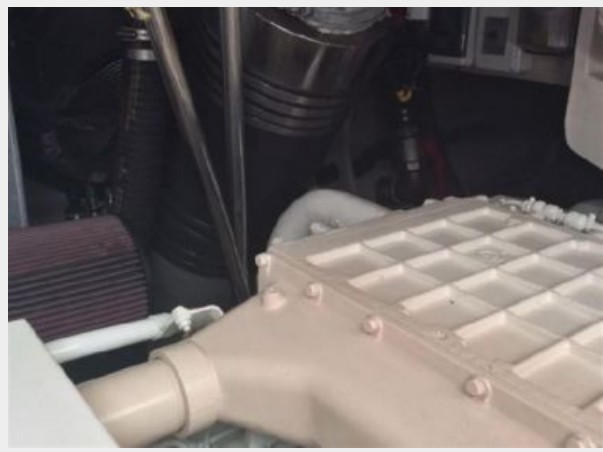
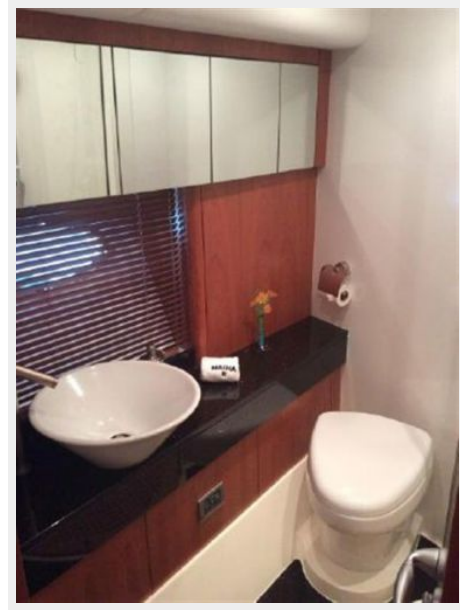


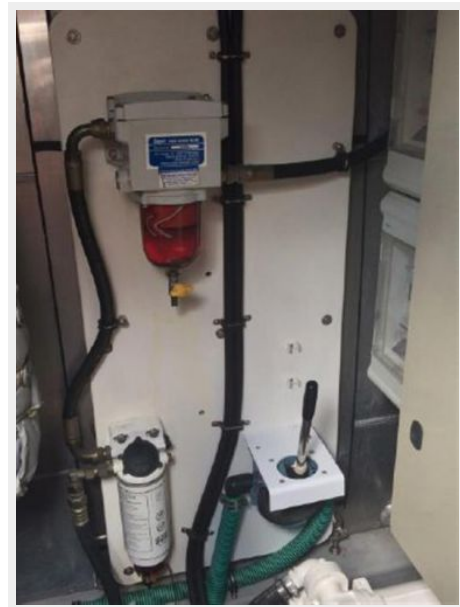














КОНТАКТЫ

Андрей Шестаков (Andrey Shestakov) – ведущий яхтенный брокер отдела продаж яхт и судов компании Shestakov Yacht Sales Inc. Официальный представитель Shestakov Yacht Sales Inc. для русскоговорящих клиентов в центральном офисе компании в Майами/Форт Лодердейл/Флорида/США.

Контактная информация

Email: andrey@shestakovyachtsales.com

Web: shestakovyachtsales.com

Телефоны

Краснодарский край: **+7(918)465-66-44**

США, Майами, Флорида: **+1(954)274-4435**

Время работы

Понедельник – Суббота: **9:00 - 21:00**
EDT

Воскресенье: **Закрето**

Адрес



Harbour Towne Marina, 850 NE 3rd St,
STE 213, Dania, FL 33004