

64' OFFSHORE VOYAGER EXTENDED DECK — OFFSHORE



Builder: OFFSHORE

Year Built: 2009

Model: Motor Yacht

Price: PRICE ON APPLICATION

Location: United States

LOA: 64' 0" (19.51m)

Beam: 18' 6" (5.64m)

Min Draft: 4' 10" (1.47m)

Cruise Speed: 14 Kts. (16 MPH)

Max Speed: 17 Kts. (20 MPH)

Our experienced yacht broker, Andrey Shestakov, will help you choose and buy a yacht that best suits your needs 64' Offshore Voyager Extended Deck 2009 — OFFSHORE from our catalogue. Presently, at Shestakov Yacht Sales Inc., we have a wide variety of yachts available on our sale's list. We also work in close contact with all the big yacht manufacturers from all over the world.

If you would like to buy a yacht 64' Offshore Voyager Extended Deck 2009 — OFFSHORE or would like help answering any questions concerning purchasing, selling or chartering a yacht, please call +1(954)274-4435

TABLE OF CONTENTS

TABLE OF CONTENTS	2
SPECIFICATIONS	7
Overview	7
Basic Information	8
Dimensions	8
Speed, Capacities and Weight	8
Accommodations	9
Hull and Deck Information	9
Engine Information	9
DETAILED INFORMATION	10
Salon	10
Galley	10
Pilothouse	10
Flybridge & Boat Deck	11
Extended Aft Deck	11
Hull Design	12
Hull Construction	12
Superstructure & Deck	13
External Components	13
Propulsion Systems	13
Engine Room & Bilges	14
Electrical Systems	15
Equipment	16
Electronics	16
Salon Media	17
Extended Aft Deck Media	17
Pilothouse Media	17
Flybridge Media	17

Master Stateroom Media	17
Guest Stateroom - Port Side Media	18
VIP Forward Media	18
Exclusions	18
Disclaimer	18
PHOTOS	19
Profile :: Drone	19
Salon facing Forward	19
Galley Topview	19
Galley to Salon at night	19
Pilothouse	19
Pilothouse at night	19
Master Salon Bed	20
Guest Stateroom	20
VIP Stateroom	20
Flybridge facing forward	20
Engine Room	20
Master Salon Bed	20
Salon facing Aft	21
Salon to Starboard	21
Salon seating facing Aft	21
Salon facing Aft	21
Salon facing Aft	21
Salon facing Forward	21
Seating	22
Salon at night	22
Galley	22
Galley at night	22
Fridge	22

Galley	22
Galley	23
Galley to Starboard	23
Galley to Salon	23
Storage in	23
Pilothouse seating	23
Pilothouse seating	23
Pilothouse	24
Pilothouse	24
Pilothouse	24
Pilothouse Electronics	24
Pilothouse Electronics	24
Washer - Dryer Closed	24
Washer - Dryer Open	25
Master Salon next to head	25
Master Salon Bed	25
Master Salon Seating	25
Master Salon Powder area	25
Master Head	25
Master Head	26
Master Stateroom	26
Master Stateroom	26
Master Stateroom	26
Master Stateroom	26
Master Stateroom	26
Master Stateroom Closet - open	27
Master Stateroom Closet - closed	27
Master head shower	27
Master head	27

Hallway	28
Guest Stateroom	28
Guest Head Shower	28
Guest Stateroom	28
Guest Head	29
VIP	29
Profile	29
VIP Stateroom	29
Bow	29
Bow	29
Bow Top	30
Bow to Aft	30
Bow Top	30
Flybridge	30
Flybridge Helm	30
Flybridge Helm	30
Flybridge Helm	31
Flybridge Helm	31
Flybridge facing foward	31
Ice Maker closed	31
Ice Maker and Fridge	31
Ice Maker and fridge open	31
Tender	32
Flybridge Top	32
Electronics	32
Satellite	32
Aft Deck	32
Aft Table	32
Engine Room	33

Aft View	33
Engine Room	33
Engine Room	33
Engine Room	33
Engine Room	33
Profile	34
CONTACTS	35
Contact details	35
Telephones	35
Office hours	35
Address	35

SPECIFICATIONS

Overview

PRICEF REDUCED FRESHLY DETAILED & READY TO SHOW

Owner Moved up to larger vessel - Offers Encouraged!

Accepted Offer includes fully crewed 3 day charter after acceptance.

Loaded with options, including:

- **Extended-range cruiser**
- **American Bow Thruster TRAC digital stabilizers • American Bow and Stern Thrusters 5-bladed propellers in 12-inch tunnels • 2x CAT C-12 700HP Engines • Sauer Danfoss Hydraulic Power Takeoffs on both Engines • Full captain's pilothouse with dual helm chairs**
- **Low Large windows for "sit down" visibility in Main Salon**
- **Large 15' salon with space for formal dining area**

This Offshore 64 Voyager is an extended range cruiser for people who like to go farther and stay longer when they get there. The owner overbuilt this vessel and added an 6 feet to extended aft deck. Big range, big accommodations, and a big list of standard equipment are the key elements here.

Start with 1,610 gallons of fuel and combine that with a hull design that has less draft, less wetted surface, a wider bottom, and a shallower aft area, and you have a low-drag yacht that goes a long way. Fuel usage is particularly efficient at mid and upper speed ranges. But, like all Offshores, the 64 has a trademark deep forefoot that allows a comfortable entry into head seas.

For perspective, the 64 beam at 18' 6" is almost 2 feet wider than the Offshore 62 Pilothouse. If you are familiar with the roomy and comfortable 62, you can imagine just how nice two more feet of elbow room will be in the 64's lower accommodations. The midship master stateroom, for example, has a king berth with walk-in closet. Above, on the main deck, there is space for an expansive salon that flows into a true formal dining area if desired. Forward VIP cabin has a Queen bed with direct access to VIP guest head. Guest stateroom has double twin beds.

Looking forward, you'll find a full captain's pilothouse with Offshore's traditional dual helm chairs and a spacious chart area, all looking out over a Portuguese bridge with extra storage compartments. And if you're willing to give up the co-pilot's chair, you can opt for a big-as-all-

outdoors chef's up-galley, suitable for feeding the large crowds that will gather in your formal dining area.

And that's not all. The boat deck is 14' 9" long, over a foot longer than the 62 Pilothouse. This accommodates a large tender or offers more space to move around without bumping your shins.

Other significant features are a stand-up engine room, covered walk-around side decks, and a raised forward bulwark for a dry ride.

But wait! There's more! The list of standard equipment for the 64 is an eye-opener: ABT stabilizers, bow & stern thrusters, A/C, dual 3500lb. windlasses, full-rotation hydraulic davit, 20 kW Northern Lights, 12.5kW Northern Lights Twin Disc Electronic controls, Cablemaster, 3 LCD flatscreen TVs, and much more.

Won't Last at this Price -- Call with an offer or to Arrange a Showing today!

Basic Information

Category: Motor Yacht

Sub Category: Long Range Cruiser

Model Year: 2009

Year Built: 2009

Country: United States

Dimensions

LOA: 64' 0" (19.51m)

Beam: 18' 6" (5.64m)

Min Draft: 4' 10" (1.47m)

Speed, Capacities and Weight

Cruise Speed: 14 Kts. (16 MPH)

Cruise Speed RPM: 2010 Kts.

Max Speed: 17 Kts. (20 MPH)

Max Speed RPM: 2370 Kts.

Displacement: 105000 Pounds

Water Capacity: 400 Gallons

Holding Tank: 175 Gallons

Fuel Capacity: 1610 Gallons

Accommodations

Total Cabins: 3

Total Heads: 2

Hull and Deck Information

Hull Material: Fiberglass

Engine Information

Engines: 2

Manufacturer: Caterpillar

Model: C12

Engine Type: Inboard

Fuel Type: Diesel

DETAILED INFORMATION

Salon

- Low large windows for "sit down" visibility
- Built in "L" or "U" seat as per plan
- Build in 37" Sharp LCD TV & "Polk Audio" surround speakers
- Choice of woodwork w/satin finish, recessed paneled cabinet doors
- Solid wood crown molding surrounding salon
- Halogen "Cantalupi" lighting w/dimmer controls
- Padded soft vinyl removable headliner
- High quality carpet w/sound pad

Galley

- GE Microwave Convection / Oven s/n AR902633K
- GE Dishwasher s/n MR8000 93C
- Bullet Mosaic Basalt Backsplash
- Granite counter tops w/overhead handing storage
- U-Line Wine Captain (Refrigerated)
- Kenyon glass top electronic 3 burner & GE oven/grill s/n GR6668Q

Pilothouse

- Raised L-settee
- Custom bookshelves above settee
- Helm station with complete engine instrumentation, function alarms, and rudder indicator
- 2 Pompanette Platinum leather helm chairs w/polished stainless steel pedestals
- Headhunter tank-monitoring system for fuel and water levels
- Tank Watch level indicators with automatic shut down at holding tanks
- Back lit AC and DC distribution/breaker panels
- Chart table/locker
- Chart light
- Rocker switches with indicator lights for bilge pumps, light, etc. functions
- Three stainless Exalto articulating windshield wipers with washer system
- Port and starboard FRP doors with stainless frames
- Two ventilation overhead hatches with Oceanair sliding screen shades
- Wood magazine rack
- U-line under-counter refer

- Beveled teak sole
- UV varnished veneer at forward helm console countertop
- Recessed, paneled cabinet doors
- Padded soft vinyl removable headliner

Flybridge & Boat Deck

- Manship door/hatch access to/from pilothouse
- 2- Large stidd chairs
- Helm station with complete engine instrumentation, function alarms, and rudder indicator
- Stowable stainless ladder to hardtop roof
- Flybridge Tables are Corian
- Lexan venturi windshield with stainless steel frame
- FRP L-seat with storage under and teak ventilation slats
- Starboard cabinets with sink, stainless Isotherm 85 refrigerator and teak ventilation grates and Raritan ice maker
- Boat deck drained to waterline with integral drains and scuppers
- 1 1/4" stainless handrails at boat deck with welded stainless life lines
- Manship stainless hatch and stainless ladder to California deck with stainless safety rail
- Fresh-water wash-down outlet
- Polk Audio waterproof speakers with volume control in radar arch
- FRP hardtop at flybridge with FRP liner, lighting, and wiring
- 2 spreader lights at boat deck and arch
- Tender chocks with tie down
- 14' Aquascan Hard bottom Tender with Yamaha 64-Stroke Engines with custom protective cover

Extended Aft Deck

- Teak caprail at extended aft deck
- Starboard aft-deck storage cabinet with engine and thruster controls, rudder indicator
- Port aft deck storage cabinet with covered sink, teak ventilation grates
- Stainless ladder to boat deck with overhead hatch
- Two underwater lights
- Electric lift to lazarette hatch
- Two aft deck flood lights in molded FRP pods
- Hand held shower at extended aft deck
- Fresh water washdown at extended aft deck
- Polk Audio waterproof speakers in aft deck overhead with volume control
- Custom extended swim platform with four stainless 2"-diameter U-handrails
- Stainless pop-up cleats at sport deck
- Stainless swim ladder at swim platform folding into integral hatch

- 4 - Polyform fenders with covers
- 8 - Braided dock lines

Hull Design

Modified semi displacement, deep vee bow entry, generous flair at bow sections, forward spray chine, prop pockets, integral swim platform, keel extension prop protection, underwater exhaust.

Hull Construction

Hand laminated FRP utilizing only bi-directional & uni-directional material, vacuum bagged Core Cell solid laminate below the water line with high quality iso & vinylester resins.

Full-length hull girders of high density foam cores with bi & uni-directional material.

Exterior hull finish in high gloss "Cook" gel coat, Reichold Hydrex vinylester resin laminate.

Multiple thwartship girders reducing panel size and increasing impact strength.

Cored structural bulkheads padded at hull, bonded as per schedule.

Full length keel increasing directional stability and propeller protection.

Putty coated bilges for smooth, easily maintained finish.

All bonding of hull to deck, roofs to cabins done with FRP, exterior finished with gel coat.

30 mil epoxy barrier coating and antifouling bottom paint with limited 3 year osmosis warranty.

Sealed bow compartment with water tight.

Structural upper and lower FRP rub rails capped with solid stainless steel.

Prop pockets to reduce propeller draft.

Raised spray chine to minimize wave noise at anchor.

Port and starboard bulwark doors for convenient access.

Portlights recessed in hull sides for protection.

Hull side port lights thru bolted for added safety.

Detail/whale stripe enhancing appearance.

Superstructure & Deck

Hand laminated FRP utilizing bi-directional & uni-directional material w/Core Cell sandwich, high quality ISO resin, vacuum bagging, deck mechanically & FRP bonded to hull.

Suitable high compression cores as required for hardware mounting.

Exterior finished w/high gloss "Cook" gel coat all surfaces, two-tone non skid finish at decks.

Main deck soles and engine room bulkheads padded & cored w/appropriate sandwich materials.

High bulwarks protecting recessed walkaround decks.

Leak proof window frames molded into cabin sides.

Bonded & gel coated joint at overhead deck liner to main cabin sides.

Molded in multiple facet & plank lines for detailed appearance & strength.

External Components

Hand laminated FRP construction utilizing Core Cell sandwich vacuum bagging where appropriate of exterior doors, molded in recessed window & door frames & exterior window frames, radar arch, internal storage bins, port & starboard bulkhead doors, fashion plates.

Molded & gel coated finish of interiors of all FRP hatches & doors.

Tinted tempered window glass (10mm fwd, 8mm side and aft).

Flush FRP recessed access boxes for exterior plumbing & electrical fittings.

Exterior materials of gel coated FRP, stainless or optional teak, no exposed exterior aluminum.

Propulsion Systems

- Twin Cat C12 700hp engines, vibration damping mounts, 24v/75amp alternators, ZF-350A 2.50:1 gears with Central dampening and live PTO. Port # NFL00283 & Starboard# NFL00284 12-cylinders
- ABT hydraulic 40hp bow & stern thrusters with 3-station controls, dual PTOs on main engines
- ABT 9' roll-fin hydraulic stabilizers
- Stainless steel #316 (with 316-L rod) exhaust risers with zinc plugs connecting to FRP
- Underwater system with bypass pipes to Aqua Quiet mufflers
- Aquamet #22 high-strength propeller shafts
- Bronze V-struts with Cutlass bearings and sound damping insulation

- Bronze intermediate struts with Cutlass bearings
- Four-blade expanded-ratio propellers
- Hydrodynamic stainless steel rudders
- Tides dripless propeller shaft glands with dual cooling lines
- Tides rudder shaft seal and bearings
- Twin Disc electronic engine controls at pilothouse, flybridge, and aft deck
- Hynautic power steering system with backup
- Visual and audio alarms for engine systems at pilothouse and flybridge

Engine Room & Bilges

White aluminum perforated covering on overhead, side, fwd, aft engine room bulkheads covering multiple layers of the latest technology sound dampening & insulation.

High polished welded stainless steel engine beds.

Three marine grade aluminum fuel tanks.

Aluminum fuel tanks insulated to minimize condensation and noise transfer.

Fuel manifold system for supply & return management with 2" crossover for port or starboard fuel fill.

Sight gauges (marine grade w/protective guard) at forward bulkhead fuel tanks.

24V "Reverso" fuel transfer pump.

Reverso GP-705 gear-driven oil change pump with 5 ports (port engine, stbd engine, port gear, stbd gear & port/stbd gensets)

Marine grade bronze sea cocks for through hull skin fittings.

"Groco" sea strainers at all raw water intakes.

Main seawater intakes plumbed for emergency bilge pump use.

Full flow stainless ball valves for all piping systems.

Dual Racor marine fuel filter system with vacuum gauge for main engines.

Single Racor marine fuel filter system with vacuum gauge for generators.

Tank level indicator systems for fuel, water & waste tanks.

Six high output 24V bilge pumps w/"Ultra Systems" automatic switches & high water alarms.

High output "Whale" 40 manual bilge pump.

"Delta-T" engine air intake system minimizing water ingestion, recessed & colour matched to exterior.

Two "Delta-T" 11" 120V/AC engine room blowers.

Engine room 24V/DC lights X 4 and 120VAC fluorescent lamps X 4.

"Fire Boy" MA 1500 automatic fire extinguishing system w/engine shut down system.

Stainless Steel safety rails along inboard engine stringers.

24V low profile S/S dome lights @ pump room & thruster/chain area.

Fresh water wash down faucet in engine room.

Stainless floorboard frames, floorboards covered with non skid vinyl & trimmed with teak.

Electrical Systems

- Northern Lights 20 kW diesel generator, 24v start with whisper sound shield, gas/water exhaust separators, and E.A.R. anti-vibration mounts
- Northern Lights 12kW diesel generator, 24v start with whisper sound shield, gas/water exhaust separators, and E.A.R. anti-vibration mounts
- Four Sea Gel 8D gel cell main engine start batteries (24v)
- Two Sea Gel 4D gel cell generator start batteries (24v)
- Eight Sea Gel 8D gel cell batteries for ship's 24v system
- Battery cross-over capability for main engine and generator batteries
- Xantrex SW-40/24 4kW inverter/120amp charger with high-temp shut down
- Newmar PT-24-40CE 24v ship-service back-up charger with high-temp shut down
- Newmar PT-24-20CE 24v engine battery charger with high-temp shut down
- Additional 60amp 24v alternator on each engine for ship service systems
- Digital DC charge rate, DC ammeters, and DC voltmeters
- 24v and 12v back-lit distribution/circuit breaker panels with amp- and voltmeters
- 120v and 220v back-lit distribution/circuit breaker panels with amp- and voltmeters
- Four Mastervolt 20amp converters, 24v to 12v
- Marinco Shorepower 125/250v-50amp, phone and TV cable inlets port and starboard side
- Glendinning CM-7 Cablemaster, 240v 50amp with 75' cable
- 30 to 50amp Shorepower Splitter
- Vimar switches and outlets in accommodations and living areas
- Overhead lighting with dimmer controls throughout
- 24v reading lights in staterooms as appropriate
- GFI breaker protection as appropriate at deck, galley, heads, engine room, and lazarette
- Breaker protection at each A/C source
- Electrolysis bonding and grounding system with two 6" x 12" zinc plates and shaft scratchers

- High-quality shielded RG-6 CO AX for TVs
- Tinned high-temperature wiring (UL approved)
- Polk Audio speakers at pilothouse, master, VIP, and mid guest cabin
- ISO boost

Equipment

- Two Muir 24v 3,500 lb vertical anchor windlasses with three station control and keel chain lockers
- Delta Anchor - type 80lb polished stainless steel bow anchor with 300' of 7/16" HT chain and chain stopper
- Rockna 70kg polished stainless steel bow anchor with 300' of 7/16" HT chain and chain stopper
- Hynautic 52" trim tabs with controls at pilothouse and flybridge
- Brower 4,000lb SWL rated extending crane
- Custom anchor rode
- Marine Air Systems with chillers and individual cabin control 75,000 BTU expansion air conditioning and reverse cycle heat system
- Exalto stainless articulating windshield wipers with washer system
- 120v Headhunter holding tank discharge pump
- 24v Sealand standby macerator pump
- Deck discharge for holding tank
- Six 24v bilge pumps with Ultra Systems automatic switches
- Ultra Systems system high-water bilge alarm with warning lights at pilothouse
- Gate valve at each watertight structural bulkhead
- Headhunter Mach V 120v fresh-water pressure pump with filter and accumulator tank
- Headhunter 24v standby water-pressure pump
- Allcraft 35gal 220v stainless hot water heater
- Two shower sump tanks designed for convenient access
- Port and starboard dockside water pressure connection
- Central drain system that minimizes thru-hull fittings
- Village Marine Tech Watermaker Model# STW800

Electronics

Navnet 3D Black Box MFD processors (2) Nauticomp 19" Daylight Glass bridge displays at pilothouse

(1) Nauticomp 19" Daylight Glass bridge displays at flybridge Navnet 3D 12kW radar Furuno FA150 AIS system (automated to-and-from ship traffic ID system) Furuno Sirius Weather for live weather/traffic updates Furuno Digital Fishfinder Black Box (3) Maretron DSM 250 Displays with NMEA 2000 (at pilothouse, flybridge & master stateroom) Simrad AP28 Autopilot with AC12,

RC42, and RPU 80 pump Simrad AP24 Control Head (2) Icom 25 W VHF M604 with Black Command waterproof microphones KVH Tracvision M7 Satellite Receiver with control panel (2) Hailer horns

Salon Media

Sharp 37" Flat Screen on Vertical Lift

Onkyo digital HDMI receiver TX-SR607

Onkyo HDMI DVD Player

Polk Audio round in-ceiling speakers

Definitive Technology Pro-Sub 60 compact amplifier subwoofer

Direct TV satellite receiver

FM antenna

Extended Aft Deck Media

Polk Audio in-ceiling speakers

Pilothouse Media

Polk Audio in-ceiling speakers

RTI KP-8 single gang keypad control

Flybridge Media

Polk Audio in-ceiling speakers

Master Stateroom Media

Polk Audio in-ceiling speakers

26" LCD flat panel TV

DVD player/amplifier

Direct TV satellite receiver

Guest Stateroom - Port Side Media

Polk Audio in-ceiling speakers

19" LCD flat panel TV

12V DVD player/amplifier

Direct TV satellite receiver

VIP Forward Media

Polk Audio in-ceiling speakers

15" LCD flat panel TV

12V DVD player/amplifier

Direct TV satellite receiver

Exclusions

Owner's personal belongings.

Disclaimer

The Company offers the details of this vessel or yacht in good faith but cannot guarantee or warrant the accuracy of this information nor warrant the condition of the vessel. A buyer should instruct his representatives, agents, or his surveyors, to investigate such details as the buyer desires validated. This vessel or yacht is offered subject to prior sale, price change, or withdrawal without notice.

PHOTOS

Profile :: Drone



Salon facing Forward



Galley Topview



Galley to Salon at night



Pilothouse



Pilothouse at night



Master Salon Bed



Guest Stateroom



VIP Stateroom



Flybridge facing forward



Engine Room



Master Salon Bed



Salon facing Aft



Salon to Starboard



Salon seating facing Aft



Salon facing Aft



Salon facing Aft



Salon facing Forward



Seating



Salon at night



Galley at night



Galley



Galley



Fridge



Galley to Starboard



Galley



Galley to Salon



Storage in



Pilothouse seating



Pilothouse seating



Pilothouse



Pilothouse



Pilothouse



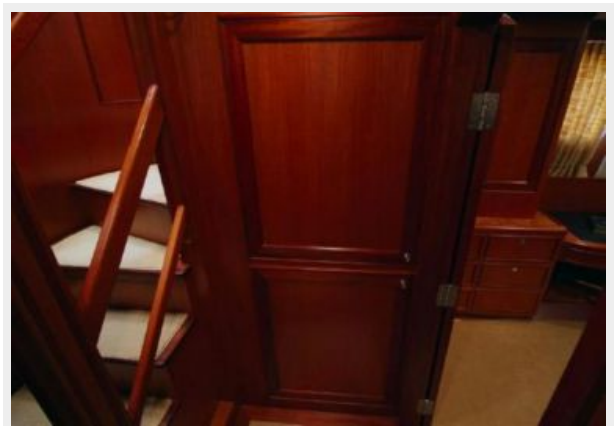
Pilothouse Electronics



Pilothouse Electronics



Washer - Dryer Closed



Washer - Dryer Open



Master Salon next to head



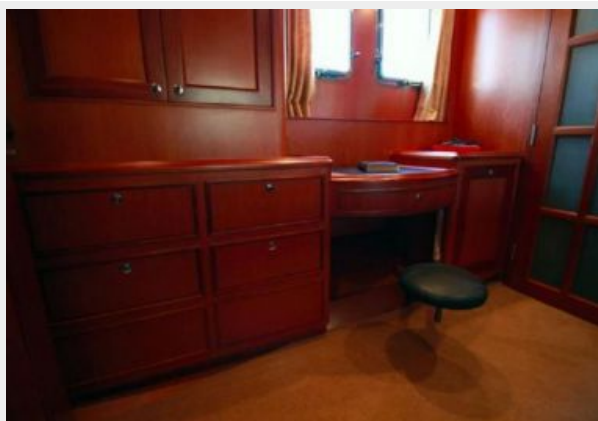
Master Salon Bed



Master Salon Seating



Master Salon Powder area



Master Head



Master Head



Master Stateroom



Master Stateroom



Master Stateroom



Master Stateroom



Master Stateroom



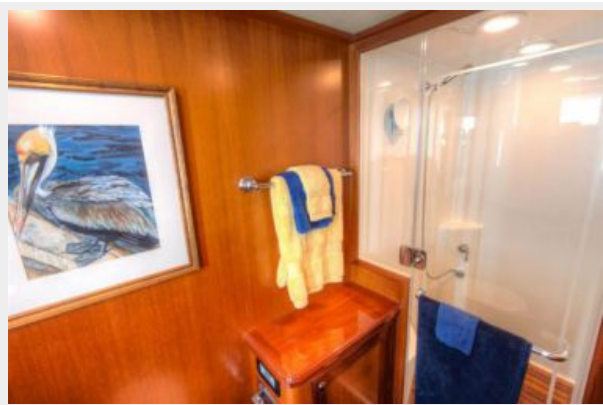
Master Stateroom Closet - open



Master Stateroom Closet - closed



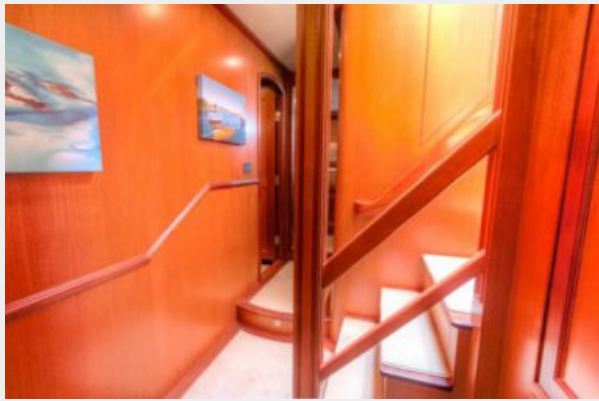
Master head



Master head shower



Hallway



Guest Stateroom



Guest Stateroom



Guest Head Shower



Guest Head



VIP



VIP Stateroom



Profile



Bow



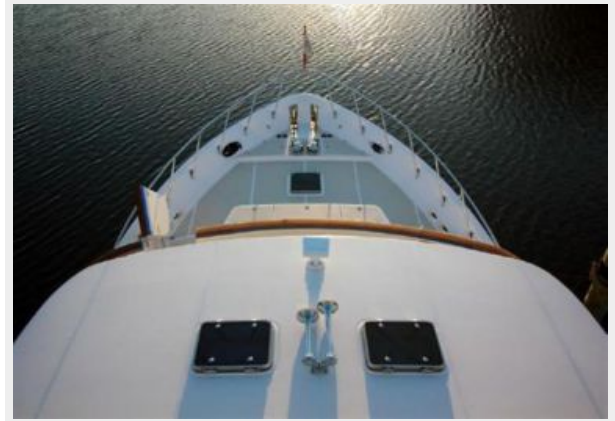
Bow



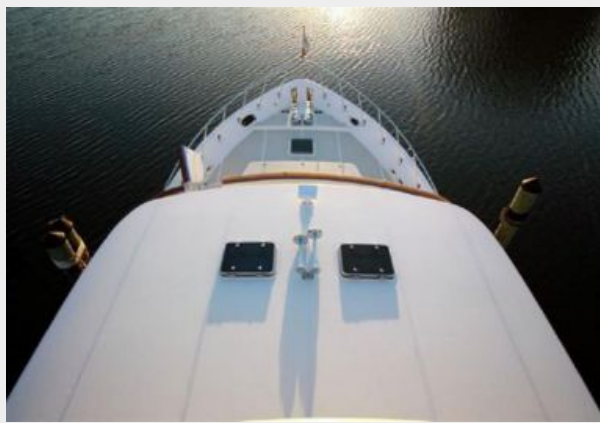
Bow to Aft



Bow Top



Bow Top



Flybridge



Flybridge Helm



Flybridge Helm



Flybridge Helm



Flybridge Helm



Flybridge facing forward



Ice Maker closed



Ice Maker and Fridge



Ice Maker and fridge open



Tender



Flybridge Top



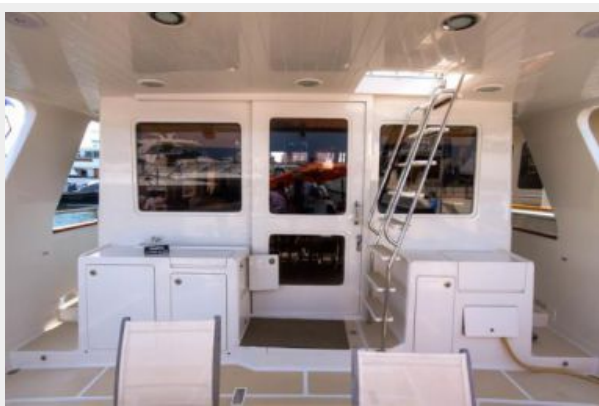
Electronics



Satellite



Aft Deck



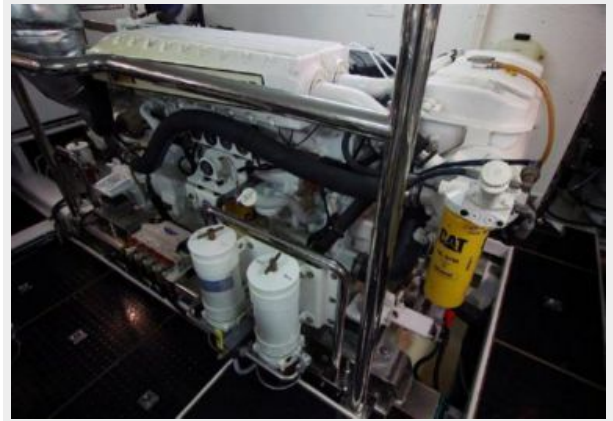
Aft Table



Aft View



Engine Room



Engine Room



Engine Room



Engine Room



Engine Room



Profile



CONTACTS

Andrey Shestakov, leading yacht broker of the sales department of Shestakov Yacht Sales Inc. Shestakov Yacht Sales Inc., the official representative of the Miami/Fort Lauderdale FL headquarters.

Contact details

Email: andrey@shestakovyachtsales.com

Web: shestakovyachtsales.com/en/

Telephones

USA: +1(954)274-4435

Office hours

Monday – Saturday: **9:00 - 21:00** EDT

Sunday: **closed**

Address



Harbour Towne Marina, 850 NE 3rd St,
STE 213, Dania, FL 33004