

ONE OF A KIND PERSHING!! — PERSHING



Судостроитель: PERSHING

Год постройки: 2009

Модель: Моторная яхта

Цена: **ЦЕНА ЯХТЫ ПО ЗАПРОСУ**

Местонахождение: United States

Длина общая: 64' 0" (19.51m)

Ширина: 16' 6" (5.03m)

Мин. осадка: 4' 4" (1.32m)

Макс. осадка: 4' 5" (1.35m)

Купить **ONE OF A KIND PERSHING!! — PERSHING** а также выбрать подходящую вам яхту из нашего каталога яхт вам поможет опытный яхтенный брокер Андрей Шестаков. На сегодняшний день компания **Shestakov Yacht Sales Inc.** имеет большое количество яхт в собственном списке продаж, а также тесно сотрудничает со всеми крупными яхтенными производителями по всему миру. Для того чтобы купить яхту **ONE OF A KIND PERSHING!! — PERSHING** а также проконсультироваться по любому вопросу связанному с покупкой, продажей, чартером яхт позвоните по телефону **+7(918)465-66-44**.

ОГЛАВЛЕНИЕ

ОГЛАВЛЕНИЕ	2
ХАРАКТЕРИСТИКИ	6
Основная информация	6
Размеры	6
Скорость, вместимость и масса	6
Размещение	6
Корпус и палуба	6
Информация о двигателе	7
ПОДРОБНОЕ ОПИСАНИЕ	8
Key Features To Consider	8
Aft Deck	8
Main Salon	9
Helm Station	10
Galley	10
Master Stateroom	11
VIP Stateroom	12
Starboard Guest Stateroom	13
Crew Quarters	14
Bow & Deck Equipment	15
Engine Room	16
Propulsion and Maneuvering Equipment	16
Construction Details	17
Brokers Remarks	17
Исключения	17
Отказ от ответственности	17
ФОТОГРАФИИ	18
Aerial Running Shot	18
Aerial Running Shot	18

Port Profile	18
Port Profile	18
Stern	18
Transom Name Board	18
Pershing Details	19
Aft Deck with Privacy Curtain	19
Aft Deck Doors Up	19
Aft Deck Doors Down	19
Aft Deck Doors Down	19
Aft Deck & Salon Fully Opened	19
Aft Deck & Salon Fully Opened	20
Aft Deck Table	20
Aft Deck Grill & Sink	20
Aft Deck Sun Pad and Seating	20
Aft Deck Sun Pad Detail	20
Main Salon Forward Sunroof Closed	20
Main Salon Forward Sunroof Open	21
Main Salon Couch	21
Main Salon Couch	21
Main Salon Aft	21
Main Salon TV	21
Main Salon Aft	21
Main Salon - Privacy Curtains Closed	22
Helm	22
Helm	22
Helm	22
Galley	22
Gally Entrance from Main Salon	22
Galley	23

Galley	23
Stairs Leading to Staterooms	23
Master Stateroom	23
Master Stateroom	23
Master Stateroom	23
Master Stateroom	24
Master Stateroom Vanity	24
Master Stateroom Chaise Lounge	24
Master Stateroom TV	24
Master Stateroom En-Suite Head	24
VIP Stateroom	24
VIP Stateroom	25
VIP Stateroom	25
VIP Stateroom TV	25
VIP Stateroom En-Suite Head	25
VIP Stateroom En-Suite Head	25
Twin Stateroom	25
Twin Stateroom TV	26
Twin Stateroom En-Suite Head	26
Twin Stateroom En-Suite Head	26
Crew Quarter Entrance from Aft Deck Seating	26
Bow	26
Crew Quarters	26
Stern Garage Tender Storage	27
Stainless Steel Anchor Detail	27
Passerelle	27
Custom Tender Roller Launch & Retrieve System	27
Engine Room	27
Port Engine	27

Port Engine	28
Starboard Engine	28
Starboard Engine	28
Generator	28
Fresh Bottom Job	28
Shore Power Frequency Converter and Transformer	28
Fresh Bottom Job	29
Fresh Bottom Job	29
Fresh Bottom Job	29
Bow Thruster	29
Stern Thruster	29
Arneson Drives	29
КОНТАКТЫ	30
Контактная информация	30
Телефоны	30
Время работы	30
Адрес	30

ХАРАКТЕРИСТИКИ

Основная информация

Тип судна: Моторная яхта

Модельный год: 2009

Год постройки: 2009

Страна: United States

Размеры

Длина общая: 64' 0" (19.51m)

Ширина: 16' 6" (5.03m)

Мин. осадка: 4' 4" (1.32m)

Макс. осадка: 4' 5" (1.35m)

Трапы: 65' 9" (20.04m)

Скорость, вместимость и масса

Водоизмещение: 92815 Pounds

Вместимость воды: 238 Gallons

Объем топливного бака: 925 Gallons

Размещение

Всего кают: 3

Всего коек: 4

Всего ком. состава: 3

Корпус и палуба

Материал корпуса: Fiberglass

Информация о двигателе

Двигатели: 2

Производитель: MAN

Модель: V12 - 1550

Тип двигателя: Inboard

Тип топлива: Diesel

ПОДРОБНОЕ ОПИСАНИЕ

Key Features To Consider

Unmistakably Pershing has created a work of art with the 64'! You'll enjoy true pride of ownership behind the wheel of this beauty with sports car like performance that will leave you asking for more. Her striking lines illustrate her perfect harmony and practical function. Unrivaled attention to detail and extremely well designed living solutions provides the utmost in yachting tradition, safety and relaxation. Without the loss of comfort and privacy, this 3 stateroom 3 head layout can comfortably accommodate 6 guests plus additional crew. A fully furnished galley equipped to provide all the comforts of home. Incredible performance with speeds up to 48 appx knots powered by very efficient MAN 1550 V12's! If you are in the market for a stylish and One Of A Kind Pershing 64, Don't Let This Slip By! She is easy to see 7 days a week. Schedule your appointment today.

KEY FEATURES:

BRAND NEW BRIGHT SILVER \$180K COMPLETE PAINT JOB!! ASEA 18KVA WORLDWIDE SHOREPOWER FREQUENCY CONVERTER!! STERN GARAGE WITH NEW AB 9 VL TENDER CUSTOM UMT LAUNCH ROLLER SYSTEM!! SUPER EASY DOCKING WITH BOW AND STERN THRUSTERS!! VERY LOW HOURS ON RELIABLE AND QUIET MAN 1550 V12'S!! CUSTOM ONYX FLOOR IN THE GUEST FOYER AND NEW CARPET THROUGHOUT!! ONBOARD MOVIE DATABASE WITH OVER 1000 MOVIES INSTALLED!! ALL LIGHTS UPGRADED TO LED!! FULLY SERVICED AND IN TURN KEY CONDITION!! TOO MANY CUSTOM OPTIONS TO LIST!! MOST UNIQUE CUSTOM 64' PERSHING ON THE MARKET TODAY!! DONT MISS THE OPPORTUNITY TO OWN THIS ONE OF A KIND 64' PERSHING!!

Aft Deck

Boarding the Aft Deck you are greeted with a perfect setting in which to enjoy moments of relaxing conversation against the ever-changing backdrop of the sea. Ergonomically designed you will find all the necessary amenities close by for whatever the occasion calls for. This open Mediterranean style aft deck is an absolutely magnificent lounge and alfresco dining location. A built in center-line settee that can easily accommodate 8 guests. Large door opens the the aft deck to the salon and the combination creates an expansive entertaining area!

- Teak decks
- Storage, side panels – port
- Table, teak, in cockpit
- (2) Waterproof speakers with independent volume control
- (7) Ceiling lights - Upgraded to LED
- (12) Courtesy lights for steps

- Stainless steel gates
- Storage compartments
- Access to crew quarter through aluminum ladder
- Access to engine room through aluminum ladder
- GRP furniture port side with sink
- GRP sofa with seat and backrest in white vinyl fabric
- Hideaway sliding hard top portion
- Sunpad with seat upholstered in white vinyl fabric

Main Salon

An unprecedented expansive entertaining and lounge area! The salon on this Pershing is the perfect vantage point to enjoy the vista. This exclusive living space is distinguished by sophisticated interior styling to satisfy your every need while on board. Exquisite finishes combined with a rich comfortable feel.

- Starboard side u-shaped settee in frau leather
- (11) Ceiling lights
- Access to the galley through a GRP stairway with Wenge steps
- Access to the night area through stairway with Wenge steps with courtesy lights
- Audio-video system: - Bose hi-fi system - 26" LED TV hideaway in port furniture - XM Radio - Onboard Wifi - Mac Mini with Movie Server and over 1000 movies - Intellian Satellite TV
- Ceiling covered in poltrona frau leather
- Ceramic set for 6 people
- Chaise longue in poltrona frau leather
- Cutlery set for 6 people
- Digitally controlled a/c system
- Glass set for 6 people
- Light switches
- Lighting stripe under windshield cove
- Natural teak holder for glasses and plates
- Sliding hard top portion
- Sofa in poltrona frau leather
- Structural GRP floor covered in Wenge
- Unsealed oak wood furniture
- With opening doors and shelves
- Up & down dining table in unsealed oak wood
- Corridor to access guest accommodations
- (3) Ceiling lights
- Light switches
- Paneled ceiling covered in vinyl-coated fabric
- Structural GRP floor covered in Onyx with Wenge frame

- Walls with frames covered in unsealed oak wood

Helm Station

Easy access from the main salon is the Lower Helm Station and Distribution Panel. The helm station is perfectly situated providing great visibility and comfort. Everything you need to take you safely to your next destination is here. Ergonomically designed for easy use mixed with the style that only a Pershing can offer.

- (2) Electronic digital LCD engine control panel
- 12v socket (cigarette lighter type)
- Aluminium panels with carbon fiber finishing
- Autopilot
- Raymarine Chart - plotter
- Electronic levers for engine controls
- Engine and navigation control instruments
- Bow and Stern thruster joystick
- Compass
- Rudder angle
- SR trim joystick
- Trim tabs joystick
- Helm wheel upholstered in poltrona frau leather
- Instrument dashboard in abs upholstered in poltrona frau leather
- Pilot seat in poltrona frau leather
- Simrad vhf Radio - NEW

Galley

Port side of the helm station down a few stairs is the galley. Nothing has been spared in this space, a perfect nook that can accommodate 6 guests comfortably while enjoying the company of the Chef tantalizing your taste-buds with culinary sensations. The opulence is continued with a beautiful finishes and designer appliances. All the comforts of home within the luxury of a Pershing.

- (1) Opening porthole in stainless steel and tempered glass with hook
- (2) Built-in ceiling spotlights
- Ceramic glass hob with 4 burners
- Combi refrigerator (186 lt and freezer 74 lt)
- Dishwasher
- Electric fan
- Electrical panel
- Extractable faucet
- Hanging lockers in unsealed oak wood with internal shelf

- Light switches
- Lights under hanging lockers
- Microwave/combination oven
- Rubbish bin
- Stainless steel sink
- Structural GRP floor covered with Wenge strips
- Under top unit in oak with doors
- Internal shelves and drawers
- Vinyl fabric paneled ceiling
- Walls covered in oak/laminate
- Worktop in coloured tempered glass

Master Stateroom

Aft of the guest foyer is the impressive full beam Master Stateroom that features a centerline king size berth with built-in night stands on either side. Custom fabrics and exquisite finishes create an inviting feeling.

Private access to the En-Suite Head is located aft on the starboard side of the cabin. Modern and richly appointed this expansive bath features a glass enclosed shower and excellent storage within.

- (2) Framed side windows in crystal
- (2) Opening portholes in stainless steel and tempered glass
- (2) Reading light
- (2) Unsealed oak and Wenge wood nightstand with drawers
- (9) Built in ceiling spotlights
- Audio/video system: - Hi-fi system Bose - 22" LED TV
- Beauty unit with mirror and under top compartment and opening doors
- Ceiling covered in vinyl fabric with lacquered frame
- Chaise longue upholstered in poltrona frau leather
- Digitally controlled a/c system
- Double bed in unsealed oak wood with head border in poltrona frau leather and locker
- Fridge
- Light switches
- Locker in unsealed oak with clothes rack, internal light and mirror
- Safe
- Unsealed oak wood dresser
- Walls with frames covered in unsealed oak wood
- Structural GRP floor covered in carpet
- Ottoman upholstered in poltrona frau leather
- Mirror at aft bulkhead above bed
- Lighting stripe underneath the bed

- LED Flat Screen TV

MASTER BATHROOM

- (2) Clothes rack
- Shower box covered in mosaic with tempered glass door
- Lacquered paneled ceiling
- (4) Built in ceiling spotlight
- Light switches
- Washbasin in natural acrylic stone
- Shower faucet with double outlets with deviator
- (2) Combined washbasin faucet
- Washbasin unit in oak with opening doors
- (2) Opening porthole in stainless steel and tempered glass
- Walls covered in laminated
- Matt polished Wenge strip floor
- Hanging lockers in oak wood with doors, mirror and internal shelf
- Wenge shower plate
- Toilet roll holder
- Towel rack
- Toilet brush holder
- A/C system outlet
- Electric fresh water WC in ceramic

VIP Stateroom

Immediately forward of the guest foyer is the VIP Stateroom. The elegance comfort and sensuous lines of the yacht are also found here. A queen island berth is easily accessible from either side. The spacious wardrobe provides ample storage for clothing. Tasteful finishes throughout with curtains that are sure to keep the light out on those late mornings in bed. Conveniently located within is private access to the En-Suite Head.

- (2) Locker in oak wood with clothes rack and internal light
- (2) Opening porthole in stainless steel and tempered glass with hook
- (2) Reading lights
- (2) Unsealed oak wood nightstand
- (7) Ceiling lights
- Audio-video system - (2) loudspeakers - mini hi-fi cd
- Blinders for hatchway
- Ceiling panels covered with
- Vinyl fabric and lacquered frame
- Digitally controlled a/c system
- Double bed in unsealed oak wood with head border
- Upholstered in poltrona frau leather and locker underneath

- Emergency exit to upper deck from circular hatchway
- Light switches
- Mirror at fore bulkhead
- Structural GRP floor covered in carpet
- Walls covered in oakwood
- LED Flat Screen TV - NEW

VIP BATHROOM

- (1) Opening porthole in stainless steel and tempered glass
- (2) Clothes rack
- (4) Built in ceiling spotlights
- A/C system outlet
- Combined washbasin faucet
- Electric fresh water WC in ceramic
- Lacquered ceiling
- Light switches
- Matt polished Wenge strip floor
- Mirror
- Shower box covered in STD laminated with tempered glass door
- Shower faucet with double outlets with deviator
- Toilet brush holder
- Toilet roll holder
- Towel rack
- Walls covered in laminated
- Washbasin in ceramic
- Washbasin unit in unsealed oak wood with opening doors
- Custom mosaic tile shower floor

Starboard Guest Stateroom

Directly starboard of the guest foyer is the Starboard Guest Stateroom. Incredible attention to detail this stateroom is comfortable and spacious fitted with twin births. The room is tastefully decorated with state of the art amenities and entrance to the private ensuite bath.

- (2) Opening porthole in stainless steel and tempered glass with hook
- (2) Reading lights
- (1) Single bed in unsealed oak wood with head border and sides in poltrona frau leather
- (6) Ceiling lights
- Audio-video system: - (2) loudspeakers - mini hi-fi cd
- Digitally controlled a/c system
- Light switches
- Locker in unsealed oakwood with clothes rack, internal light and mirror
- Mirror at aft bulkhead

- Paneled ceiling covered in vinyl fabric with lacquered frame
- Structural GRP floor covered in carpet
- Unsealed oakwood nightstand
- Walls covered in unsealed oak wood
- LED Flat Screen TV

GUEST BATHROOM

- (1) Opening porthole in stainless steel and tempered glass with hook
- (2) Clothes rack
- (3) Built-in ceiling spotlights
- A/C system outlet
- Combined washbasin faucet
- Electric fresh water WC in ceramic
- Lacquered paneled ceiling
- Light switches
- Matt polished Wenge strip
- Floor
- Mirror
- Shower box covered in laminate with tempered glass stainless steel door
- Shower faucet with double outlets with deviator
- Toilet brush holder
- Toilet roll holder
- Towel rack
- Walls covered in laminated
- Washbasin in ceramic
- Washbasin unit in unsealed oak wood and opening door
- Custom mosaic tile shower floor

Crew Quarters

- - (1) Opening porthole in stainless steel and tempered glass with hook
 - (3) Built-in ceiling spotlight
 - Access from cockpit
 - Digitally controlled a/c system
 - Light switches
 - Loudspeaker (2)
 - Mini hi-fi cd
 - Paneled ceiling covered in vinyl-coated fabric
 - Single bed
 - Structural GRP floor covered in carpet
 - Stereo speaker (2)
 - Walls covered in vinyl fabric and GRP

Crew bathroom

- (2) Built-in ceiling spotlight
- Clothes rack
- Extractable shower with mixer
- Fiberglass floor
- Lacquered ceiling
- Mirror
- Small electric fresh water WC in ceramic
- Toilet brush holder
- Toilet roll holder
- Towel rack
- Washbasin unit with GRP top

Bow & Deck Equipment

Walk around decks and a large bow section makes moving around the decks a breeze. There is a lovely lounge area for guests with sun pad on the bow to take in the sun or stars. Also a great get away for privacy and relaxation, especially while at anchor.

- 1 x 1500w capstan with foot control
- 1 x black water pump out cap
- 2 x dome
- 1 x external shower
- 1 x fresh water filling cap
- 1 x fuel-filling cap
- 1 x hinged circular hatchway in stainless steel and crystal glass with handle
- 2 x 2300w windlass with waterproof control pad
- 2 x fairlead in stainless steel
- 2 x side Pershing logo in silicon
- 2 x stainless steel gate for cockpit entry
- 2 x VHF antenna
- 2 x windshield wiper/washer
- Aft garage for tender
- Fore storage with door and chain peak
- Galvanized anchor with join (1 x 32 kg)
- Galvanized chain 75mt
- GPS antenna
- Hideaway aft sliding door in black painted aluminum and tempered glass
- Horn
- Hydraulic hideaway swim ladder in bathing platform
- Regulation navigational lights
- Side windows in monolithic tempered crystal

- Side windows with electric mechanism
- Signal mast in stainless steel
- Stainless steel aft handrail 30 mm
- Stainless steel mooring cleat: - At bow (2) - At midship (2) - Stern (2)
- Stainless steel railing
- Swimming platform and aft steps in teak
- Telescopic hydraulic hideaway gangway with remote control
- Windshield in transparent tempered glass
- Liferaft

Engine Room

- Access to engine room from cockpit
- (1) Light switch
- 2) Coupling joint between adaptor and searex flange
- (2) Diesel engine MAN D2842LE433 V12 1550hp - Full Service Oct 2014
- (2) Electric extractor
- (2) Engine exhaust muffler
- (2) Waterproof fixed explosion-proof neon light
- (4) Stainless steel engine exhaust raiser
- A/C main unit
- Dynamic air intakes
- E/pump a/c
- GRP sandwiched stratified plank ribbing covered in anti-slip material
- Hydraulic oil heat exchanger
- Hydraulic unit for gangway and garage hatch
- Hydraulic unit for steering compartment trims and trim tabs
- Hydraulic unit for swim ladder and aft sliding door
- Kohler power generator 20 kw – 230 mono - 50hz with soundproof housing - 324 appx hours - Full Service Oct 2014
- ASEA 18kva Shore Power and Frequency Converter - NEW
- Power take off on engines and reduction gears
- Thermal acoustic insulation

Propulsion and Maneuvering Equipment

- (2) Hydraulic stainless steel trim tabs
- (2) 5 blades nickel-aluminum-bronze
- Electric bow thruster and stern thruster (Stern Thruster New)
- ASD Surface drive
- Hydraulic power steering system

Construction Details

Hull: construction from mould with single skin bottom vacuum infusion. Lamination and sides in closed cell PVC core sandwich; vinylester resin. Stratification of longitudinal and transversal stringers with polyurethane core.

Deck: construction from mould in closed cell PVC core sandwich format. Vacuum infusion lamination with vinylester resin Main bulkheads and interior structural floors in sandwich format vacuum infusion lamination.

Structural tanks for fuel, fresh water, grey and black water, are layered with vinylester resin.

Areas of the deck such as: the bow area, side decks and cockpit are covered with anti slip finish or polished gelcoat such as hull and superstructure.

Areas of the deck such as: swim platform and aft steps are covered in teak sealed with polymerized black rubber caulking.

Brokers Remarks

She is an outstanding example of Pershing's unique style and special attention to detail. This boat has been well maintained and is a beautiful custom ensemble that is turn key and ready to run. Don't miss this rare opportunity to own a One Of A Kind Pershing 64' that is priced to sell! She is easy to see 7 days a week. Schedule your appointment today.

Исключения

При продаже яхты исключаются личные вещи владельца.

Отказ от ответственности

Компания предоставляет описание судна или яхты добросовестно, но не может гарантировать точность этой информации, а также не ручается за техническое состояние. Покупатель должен проинструктировать своих агентов или оценщиков исследовать представленную информацию более подробно, по собственному желанию. Продажа судна или яхты, изменение цены или снятие с продажи будет происходить без предварительного уведомления.

ФОТОГРАФИИ

Aerial Running Shot



Aerial Running Shot



Port Profile



Port Profile



Stern



Transom Name Board



Pershing Details



Aft Deck with Privacy Curtain



Aft Deck Doors Up



Aft Deck Doors Down



Aft Deck Doors Down



Aft Deck & Salon Fully Opened



Aft Deck & Salon Fully Opened



Aft Deck Table



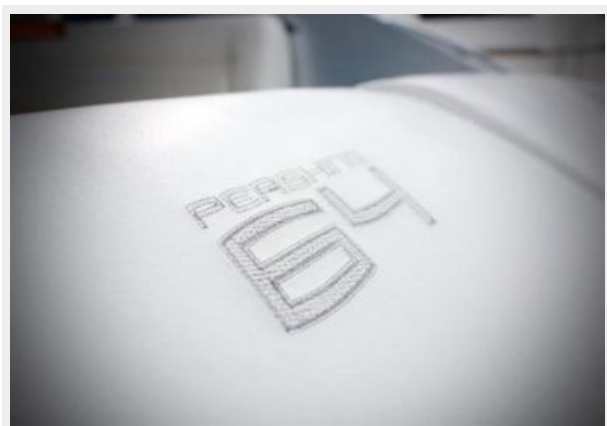
Aft Deck Grill & Sink



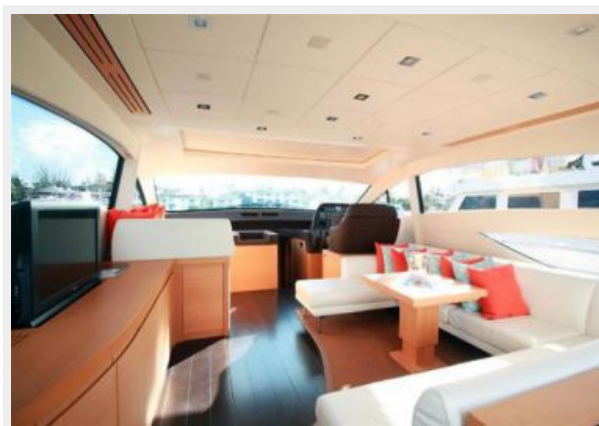
Aft Deck Sun Pad and Seating



Aft Deck Sun Pad Detail



Main Salon Forward Sunroof Closed



Main Salon Forward Sunroof Open



Main Salon Couch



Main Salon Couch



Main Salon Aft



Main Salon TV



Main Salon Aft



Main Salon - Privacy Curtains Closed



Helm



Helm



Helm



Galley



Gally Entrance from Main Salon



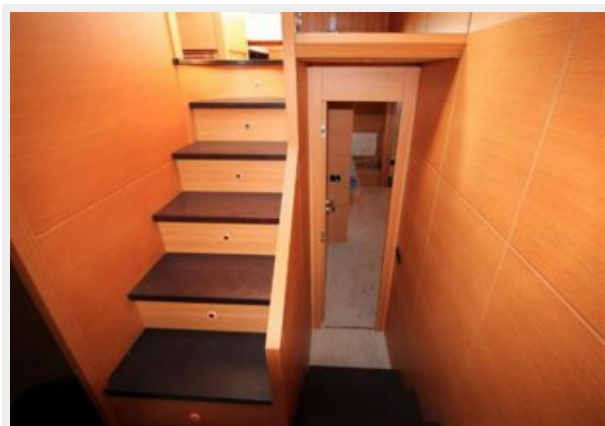
Galley



Galley



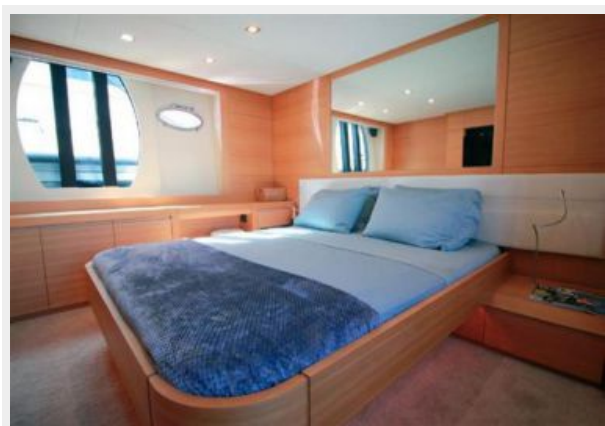
Stairs Leading to Staterooms



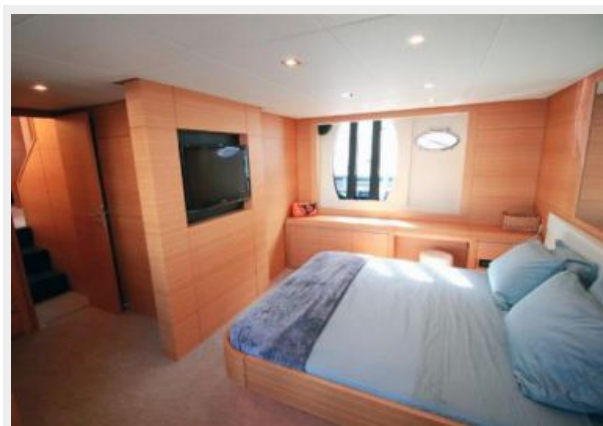
Master Stateroom



Master Stateroom



Master Stateroom



Master Stateroom



Master Stateroom Vanity



Master Stateroom Chaise Lounge



Master Stateroom TV



Master Stateroom En-Suite Head



VIP Stateroom



VIP Stateroom



VIP Stateroom



VIP Stateroom TV



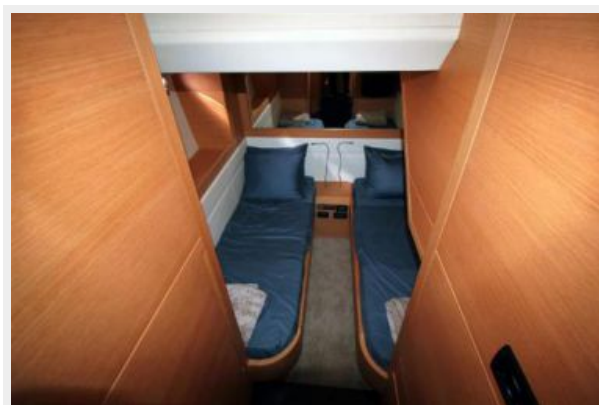
VIP Stateroom En-Suite Head



VIP Stateroom En-Suite Head



Twin Stateroom



Twin Stateroom TV



Twin Stateroom En-Suite Head



Twin Stateroom En-Suite Head



Crew Quarter Entrance from Aft Deck Seating



Crew Quarters



Bow



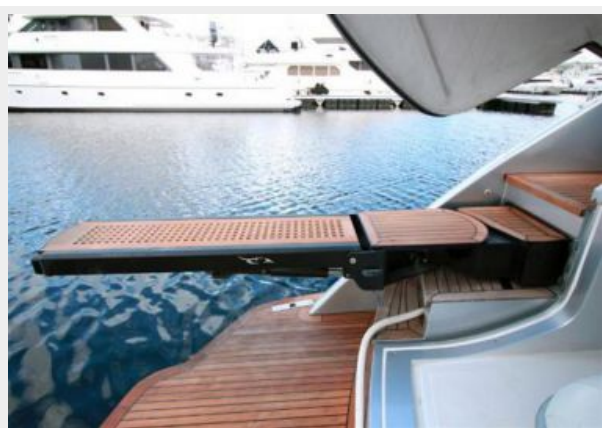
Stainless Steel Anchor Detail



Stern Garage Tender Storage



Passerelle



Custom Tender Roller Launch & Retrieve System



Engine Room



Port Engine



Port Engine



Starboard Engine



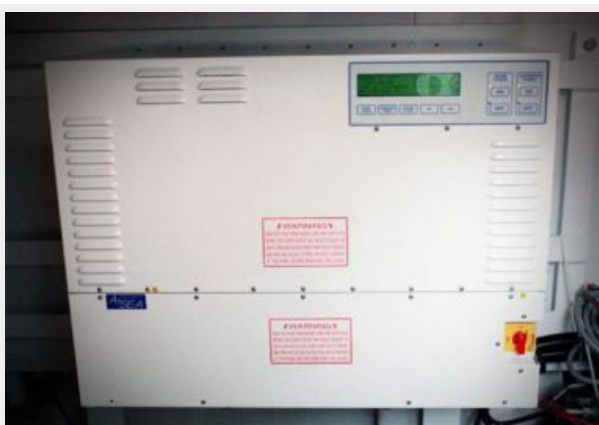
Starboard Engine



Generator



Shore Power Frequency Converter and Transformer



Fresh Bottom Job



Fresh Bottom Job



Fresh Bottom Job



Fresh Bottom Job



Bow Thruster



Stern Thruster



Arneson Drives



КОНТАКТЫ

Андрей Шестаков (Andrey Shestakov) – ведущий яхтенный брокер отдела продаж яхт и судов компании Shestakov Yacht Sales Inc. Официальный представитель Shestakov Yacht Sales Inc. для русскоговорящих клиентов в центральном офисе компании в Майами/Форт Лодердейл/Флорида/США.

Контактная информация

Email: andrey@shestakovyachtsales.com

Web: shestakovyachtsales.com

Телефоны

Краснодарский край: **+7(918)465-66-44**

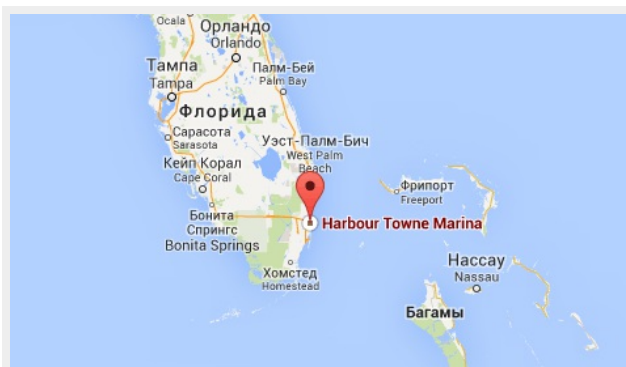
США, Майами, Флорида: **+1(954)274-4435**

Время работы

Понедельник – Суббота: **9:00 - 21:00**
EDT

Воскресенье: **Закрито**

Адрес



Harbour Towne Marina, 850 NE 3rd St,
STE 213, Dania, FL 33004