

KIJO — HEESEN YACHTS



Builder: HEESEN YACHTS

Year Built: 2003

Model: Semi-Displacement

Price: €9,900,000 EUR

Location: France

LOA: 144' 5" (44mm)

Max Draft: 8' 3" (2.5mm)

Cruise Speed: 22 Knots Kts. (25 MPH)

Max Speed: 26 Knots Kts. (30 MPH)

Our experienced yacht broker, Andrey Shestakov, will help you choose and buy a yacht that best suits your needs **KIJO — HEESEN YACHTS** from our catalogue. Presently, at Shestakov Yacht Sales Inc., we have a wide variety of yachts available on our sale's list. We also work in close contact with all the big yacht manufacturers from all over the world.

If you would like to buy a yacht **KIJO — HEESEN YACHTS** or would like help answering any questions concerning purchasing, selling or chartering a yacht, please call **+1(954)274-4435**

TABLE OF CONTENTS

TABLE OF CONTENTS	2
SPECIFICATIONS	4
Overview	4
Basic Information	4
Dimensions	4
Speed, Capacities and Weight	4
Accommodations	5
Hull and Deck Information	5
Engine Information	5
PHOTOS	6
ACS07233-HDR	7
ACS06675-HDR	7
ACS06635-HDR	7
ACS06615-HDR	8
ACS06745-HDR	8
ACS06862-HDR	8
ACS06800-HDR	8
ACS06909	8
ACS07311-HDR	8
ACS07100	9
ACS07446	9
ACS07521	9
DJI_0107	9
DJI_0109	9
CONTACTS	10
Contact details	10
Telephones	10
Office hours	10

Address

10

SPECIFICATIONS

Overview

ZERO - HOURED engine rebuild with new blocks 2023.

Available in January 2024 after a € 3M refit with a new 20 year class certificate and newly rebuilt zero-houred main engines. This aluminium Heesen semi-displacement motor yacht offers distinctive contemporary styling which stands the test of time. She offers a potential new owner great opportunities for fast yet comfortable cruising thanks to her totally overhauled zero-houred MTU 4000 series engines and at anchor stabilization. Featuring a contemporary Terence Disdale interior, she represents a great ownership proposition for those seeking a high quality, well maintained fast cruising yacht.

Basic Information

Category: Semi-Displacement

Sub Category: Semi-Displacement

Model Year: 2003

Year Built: 2003

Refit Type: Engines and Gearboxes

Country: France

Dimensions

LOA: 144' 5" (44mm)

Max Draft: 8' 3" (2.5mm)

Speed, Capacities and Weight

Cruise Speed: 22 Knots Kts. (25 MPH)

Cruise Speed Range: 3200

Max Speed: 26 Knots Kts. (30 MPH)

Gross Tonnage: 417 Pounds

Fuel Capacity: 18227.87 Gal Gallons

Accommodations

Total Cabins: 5

Total Berths: 12

Sleeps: 12

Total Heads: 7

Crew Cabin: 9

Crew Berths: 9

Crew Heads: 4

Hull and Deck Information

Hull Material: Aluminum

Deck Material: Teak over Aluminum

Hull Configuration: Semi-Displacement

Hull Color: Flag Blue

Hull Designer: Diaship Design

Interior Designer: Terence Disdale

Engine Information

Engines: 2

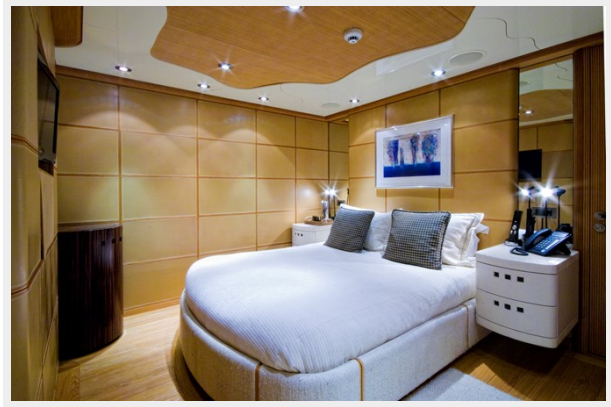
Manufacturer: MTU

Engine Type: Inboard

Fuel Type: Diesel

PHOTOS





ACS07233-HDR



ACS06675-HDR

ACS06635-HDR



ACS06615-HDR



ACS06745-HDR



ACS06862-HDR



ACS06800-HDR



ACS06909



ACS07311-HDR



ACS07100



ACS07446



ACS07521



DJI_0107



DJI_0109



CONTACTS

Andrey Shestakov, leading yacht broker of the sales department of Shestakov Yacht Sales Inc. Shestakov Yacht Sales Inc., the official representative of the Miami/Fort Lauderdale FL headquarters.

Contact details

Email: andrey@shestakovyachtsales.com

Web: shestakovyachtsales.com/en/

Telephones

USA: +1(954)274-4435

Office hours

Monday – Saturday: **9:00 - 21:00** EDT

Sunday: **closed**

Address



Harbour Towne Marina, 850 NE 3rd St,
STE 213, Dania, FL 33004