

## ANDIAMO III — GRAND BANKS



**Судостроитель:** GRAND BANKS

**Год постройки:** 2006

**Модель:** Крейсер

**Цена:** ЦЕНА ЯХТЫ ПО ЗАПРОСУ

**Местонахождение:** United States

**Длина общая:** 54' 0" (16.46m)

**Ширина:** 16' 0" (4.88m)

Купить **ANDIAMO III — GRAND BANKS** а также выбрать подходящую вам яхту из нашего каталога яхт вам поможет опытный яхтенный брокер Андрей Шестаков. На сегодняшний день компания **Shestakov Yacht Sales Inc.** имеет большое количество яхт в собственном списке продаж, а также тесно сотрудничает со всеми крупными яхтенными производителями по всему миру.

Для того чтобы купить яхту **ANDIAMO III — GRAND BANKS** а также проконсультироваться по любому вопросу связанному с покупкой, продажей, чартером яхт позвоните по телефону **+7(918)465-66-44**.

# ОГЛАВЛЕНИЕ

ОГЛАВЛЕНИЕ	2
ХАРАКТЕРИСТИКИ	5
Обзор	5
Основная информация	5
Размеры	5
Скорость, вместимость и масса	5
Размещение	6
Корпус и палуба	6
Информация о двигателе	6
ПОДРОБНОЕ ОПИСАНИЕ	7
Walkthrough	7
Deck Equipment	7
Electronic Equipment	8
Entertainment Equipment	9
Galley	9
Office	9
Engine & Mechanical Equipment	9
Electrical Equipment	10
Remarks	11
Exclusions	11
Исключения	11
Отказ от ответственности	12
ФОТОГРАФИИ	13
Bow	13
Aft Deck	13
Aft Deck	13
Aft Deck	13
Sidedeck, Stbd	13

Foredeck	13
Foredeck	14
Salon	14
Salon	14
Salon	14
Salon	14
Salon	14
Salon	15
Salon	15
Galley	15
Salon	15
Galley	15
Galley	15
Helm Station	16
Helm Station	16
Helm Companion	16
Helm Station	16
Master Stateroom	17
Master Stateroom	17
Master Stateroom	17
Master Head	17
Master Head	18
Guest Stateroom	18
Guest Stateroom	18
Guest Stateroom	18
Guest Stateroom	19
Guest Head	19
Guest Head	19
Guest Head	19

---

Office	20
Office	20
Office	20
Engine Room	20
Engine Room	20
Engine Room	20
Engine Room	21
Engine Room	21
Engine Room	21
Engine Room	21
Engine Room	21
Engine Room	22
Engine Room	22
Transom	22
Profile	22
Stern	22
<b>КОНТАКТЫ</b>	<b>23</b>
Контактная информация	23
Телефоны	23
Время работы	23
Адрес	23

# ХАРАКТЕРИСТИКИ

## Обзор

ANDIAMO III features a custom 2 stateroom layout with separate office arrangement and two heads with ensuite showers. She is lightly used with 295 hours. She has Flag Blue hull paint (December 2013), topsides in Grand Banks White, and fresh Awlgrip non-skid. With her very comfortable layout, spacious interior, large cockpit, wide walkaround side decks, extended swim platform, hydraulic dinghy lift, extensive electronics and entertainments systems and much more! She represents one of the most fantastic buys in the downeast express market!

ANDIAMO III is simply a fantastic yacht in excellent condition, maintained to the highest degree by her knowledgeable owners, and priced to sell now!

The 54 Eastbay is one of the most highly regarded downeast express yachts in her class with her deep-vee hull, substantial weight and Grand Banks high quality build standards combined with Ray Hunt's fantastic design. She has one of the softest rides on the water whether a day cruise or a long distance trip down the east coast, she's one of the most awesome yachts on the sea!

## Основная информация

Тип судна: Крейсер

Подкатегория: Express

Модельный год: 2006

Год постройки: 2006

Страна: United States

## Размеры

Длина общая: 54' 0" (16.46m)

Ширина: 16' 0" (4.88m)

## Скорость, вместимость и масса

Водоизмещение: 56500 Pounds

Вместимость воды: 200 Gallons

Вместимость сточного бака: 90 Gallons

Объем топливного бака: 935 Gallons

## Размещение

---

Всего кают: 2

## Корпус и палуба

---

Материал корпуса: Fiberglass

## Информация о двигателе

---

Двигатели: 2

Производитель: Cummins

Модель: QSM-11

Тип двигателя: Inboard

Тип топлива: Diesel

---

# ПОДРОБНОЕ ОПИСАНИЕ

---

## Walkthrough

---

ANDIAMO III has a spacious cockpit with three large lazarette storage compartments and aft facing bench seats both port and starboard with storage below. Entry to the salon from the cockpit is up three steps with engine room access below the steps easily accessed with the use of a hydraulic lift. Moving to her salon from the aft deck gives an incredibly open feel with large windows all around for natural light and fantastic visibility; two windows slide open for ventilation in the salon, along with two overhead hatches. The full-size L-settee and teak yacht hi-lo table with fold-down leaves is aft and to starboard and one (1) barrel chair is to port with pop-up flat screen TV just forward inside the teak cabinetry and the entertainment system just forward of that. Forward to port is a double helmseat with chart locker storage forward, and located just opposite the helm station to starboard. The helm station boasts a STIDD seat with electronic controls for adjustments. The Galley is down to port featuring Sub Zero refrigerator and freezer; fully equipped with ample storage and counter space with Granite countertops. The custom office is opposite the galley to starboard and features a writing desk, numerous drawers & lockers and the combination washer/dryer is located at the aft end in a cabinet with a louvered door. Also aft in the office is a U-Line icemaker and a U-Line refrigerator, both with teak doors. The Master Stateroom is forward with an island queen berth, plentiful storage in drawers, cabinets and hanging locker. The master also features an ensuite private Master Head with stall shower. Aft and to port is the Guest Stateroom with twin berths; opposite is the Guest/Day Head with ensuite shower.

## Deck Equipment

---

- Extended teak swim platform w/ hydraulic dinghy lift
- Flip-down swim ladder
- Transom door
- Transom hot & cold shower w/ freshwater washdown
- Freshwater washdown, forward
- Maxwell 2200 bi-directional electric Windlass w/ remote
- 60-lb. CQR anchor w/ approx. 330' of 5/16" chain
- Fortress FX-37 anchor w/ approx. 15' of 5/16" chain and 200' of 5/8" nylon rode
- (3) portable dry chemical fire extinguishers: (1) 10BC and (2) 5BC

- Life ring
- Flare kit
- Bell
- (4) Fenders
- (6) Dock Lines
- Varnished teak ensign & burgee staffs
- Custom fixed aft deck covering; Palm Beach Bimini, new 2014
- Textaline covers for windshiled & all salon windows

## Electronic Equipment

---

- Furuno RD-30 Multi-function display
- Furuno GP-7000F Camp-NT Electronic Chart Plotter/GPS/Fish Finder
- Furuno Navnet GPS/ Radar/Electronic Chart Plotter/Fish Finder
- Furuno RD-30 Depth Finder
- Furuno NavNet Chart Plotter
- Simrad AP26 Autopilot
- (1) Icom IC-M602 VHF (also provides hailer & automatic sound signaling)
- Side-Power Bow and Stern Thruster controls
- Bennett Trim Tab controls
- Ritchie Powerdamp Compass
- ACR Searchlight
- Kahlenberg Air Horn
- VDO Rudder Angle Indicator
- (3) Exalto Windshield Wiper & Wash system
- Brass Clock & Barometer



---

## Entertainment Equipment

---

- KVH TracVision Satellite (Tracking DSS Television System)
- Bose Lifestyle Home Theater Entertainment System w/ DVD & subwoofer with speakers & individual controls in Salon & both staterooms
- Sony LCD TV in Salon, stowed in cabinet w/ pop-up mechanism at port salon

---

## Galley

---

The U-shaped galley is down 4 steps to port and opposite the office positioned to starboard. This area shares the sunroof with the salon above which provides exceptional natural lighting.

- SubZero Refrigerator
- SubZero Freezer
- Force 10 Euro Kera 3-burner electric Ceran-top Stove with Oven
- Sharp Microwave/Convection Oven
- Stainless Steel Single Large Sink
- Granite Countertops "Black Galaxy"
- Abundance of Storage

---

## Office

---

The office area is to starboard opposite the galley and features beautiful teak cabinetry which includes built-in bookshelves, cabinets, cubbys, tall storage lockers and a teak padded stool with curtained window above. Housed aft in this area are a U-Line icemaker, and a U-Line refrigerator, both with teak doors. Forward is the Splendide 2000S combination washer/dryer with a louvered door and ample storage above.

---

## Engine & Mechanical Equipment

---

- Twin 660hp Cummins QSM-11 diesel engines, 295 hours as of 03/16/2015
- Cummins engine data display gauges
- Twin Disc EC-300 engine controls

- Twin Disc reduction gear
- Side-Power Bow Thruster
- Side-Power Stern Thruster
- Freshwater Engine Cooling System
- Dual Racor fuel filters, primary
- Cummins fuel filters, secondary
- Fuel transfer pump (transfers from 200 gal. auxiliary tank to primary tank, as needed)
- Reverso oil change pump for engines, transmissions & genset
- 32" x 32.25" 5-blade Nibral propellers
- Twin Disc MGX-5135A reduction gears, Ratio 2:1
- 2 3/4" stainless steel shafts
- Strong dripless shaft seals
- (2) bronze rudders
- Computank fuel & water level indicators (at helm)
- Tankwatch holding tank level monitor
- Teleflex Seastar hydraulic power assisted steering
- (4) MarineAir Reverse Cycle Air Conditioning systems with digital controls
- Seafire CO monitor & smoke detectors
- Splendide 2100 combo vented Washer/Dryer (in office area)
- (4) electric automatic bilge pumps
- (1) manual bilge pump
- (2) electric automatic shower macerator pumps
- Sealand Vacuflush waste system

---

## Electrical Equipment

---

Onan 13.5kW Generator provides 110V service off dock.

- Switch panel w/ breakers
- Glendinning Cablemaster w/ 50-amp 75' shorepower cord
- Batteries: Seven (7) 12V for 12- and 24-volt systems in covered battery boxes
- Battery Chargers: Mastervolt MASS 24/50-amp, Mastervolt Ivo Smart 12/50-2 and

Xantrex PS2524M

- Xantrex PS2524m 2500-watt Inverter/Charger w/ controller

## Remarks

---

ANDIAMO III features a custom 2 stateroom layout with separate office arrangement and two heads with ensuite showers. She is lightly used with 295 hours. She has Flag Blue hull paint (December 2013), topsides in Grand Banks White, and fresh Awlgrip non-skid. With her very comfortable layout, spacious interior, large cockpit, wide walkaround side decks, extended swim platform, hydraulic dinghy lift, extensive electronics and entertainments systems and much more! She represents one of the most fantastic buys in the downeast express market!

ANDIAMO III is simply a fantastic yacht in excellent condition, maintained to the highest degree by her knowledgeable owners, and priced to sell now!

The 54 Eastbay is one of the most highly regarded downeast express yachts in her class with her deep-vee hull, substantial weight and Grand Banks high quality build standards combined with Ray Hunt's fantastic design. She has one of the softest rides on the water whether a day cruise or a long distance trip down the east coast, she's one of the most awesome yachts on the sea!

## Exclusions

---

Owner's personal belongings.

## Исключения

---

При продаже яхты исключаются личные вещи владельца.

---

## Отказ от ответственности

---

Компания предоставляет описание судна или яхты добросовестно, но не может гарантировать точность этой информации, а также не ручается за техническое состояние. Покупатель должен проинструктировать своих агентов или оценщиков исследовать представленную информацию более подробно, по собственному желанию. Продажа судна или яхты, изменение цены или снятие с продажи будет происходить без предварительного уведомления.

# ФОТОГРАФИИ

**Bow**



**Aft Deck**



**Aft Deck**



**Aft Deck**



**Siddeck, Stbd**



**Foredeck**



**Foredeck**



**Salon**



**Salon**



**Salon**



**Salon**



**Salon**



Salon



Salon



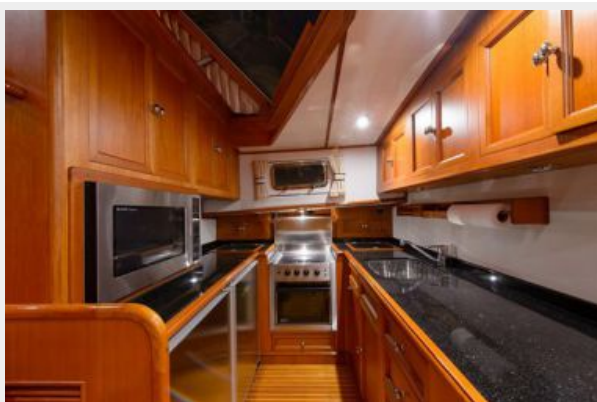
Salon



Galley



Galley



Galley



**Helm Station**



**Helm Station**



**Helm Station**



**Helm Companion**

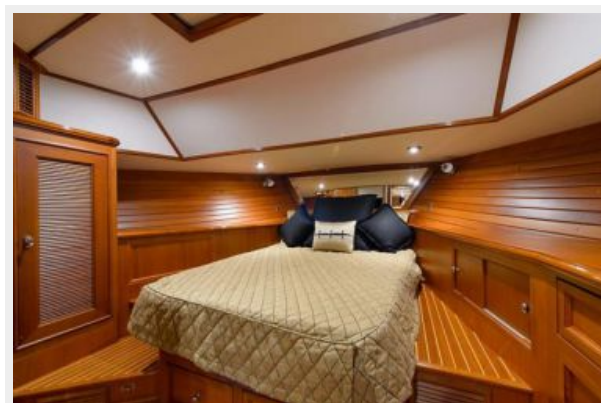




**Master Stateroom**



**Master Stateroom**



**Master Stateroom**



**Master Head**



**Master Head**



**Guest Stateroom**



**Guest Stateroom**



**Guest Stateroom**



**Guest Stateroom**



**Guest Head**



**Guest Head**

**Guest Head**



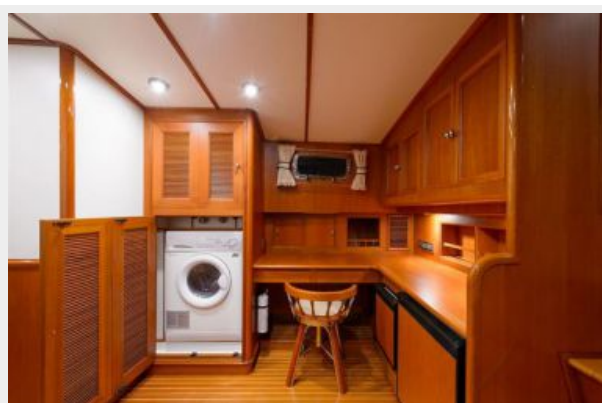
Office



Office



Office



Engine Room



Engine Room



Engine Room



**Engine Room**



**Engine Room**



**Engine Room**



**Engine Room**



**Engine Room**



**Engine Room**



**Transom**

**Profile**



**Stern**



# КОНТАКТЫ

Андрей Шестаков (Andrey Shestakov) – ведущий яхтенный брокер отдела продаж яхт и судов компании Shestakov Yacht Sales Inc. Официальный представитель Shestakov Yacht Sales Inc. для русскоговорящих клиентов в центральном офисе компании в Майами/Форт Лодердейл/Флорида/США.

## Контактная информация

Email: [andrey@shestakovyachtsales.com](mailto:andrey@shestakovyachtsales.com)

Web: [shestakovyachtsales.com](http://shestakovyachtsales.com)

## Телефоны

Краснодарский край: **+7(918)465-66-44**

США, Майами, Флорида: **+1(954)274-4435**

## Время работы

Понедельник – Суббота: **9:00 - 21:00**  
EDT

Воскресенье: **Закрето**

## Адрес



Harbour Towne Marina, 850 NE 3rd St,  
STE 213, Dania, FL 33004