

REEL SWEET — SEA RAY



Builder: SEA RAY

Year Built: 2007

Model: Cruiser

Price: PRICE ON APPLICATION

Location: United States

LOA: 28' 0" (8.53m)

Beam: 9' 5" (2.87m)

Max Draft: 3' 3" (0.99m)

Our experienced yacht broker, Andrey Shestakov, will help you choose and buy a yacht that best suits your needs **Reel Sweet — SEA RAY** from our catalogue. Presently, at Shestakov Yacht Sales Inc., we have a wide variety of yachts available on our sale's list. We also work in close contact with all the big yacht manufacturers from all over the world.

If you would like to buy a yacht **Reel Sweet — SEA RAY** or would like help answering any questions concerning purchasing, selling or chartering a yacht, please call **+1(954)274-4435**

TABLE OF CONTENTS

| | |
|------------------------------|----|
| TABLE OF CONTENTS | 2 |
| SPECIFICATIONS | 3 |
| Overview | 3 |
| Basic Information | 9 |
| Dimensions | 10 |
| Speed, Capacities and Weight | 10 |
| Accommodations | 10 |
| Hull and Deck Information | 10 |
| Engine Information | 10 |
| PHOTOS | 11 |
| CONTACTS | 17 |
| Contact details | 17 |
| Telephones | 17 |
| Office hours | 17 |
| Address | 17 |

SPECIFICATIONS

Overview

OWNER WANTS THIS BOAT SOLD NOW! -BRING ALL REASONABLE OFFERS

This is the most immaculate and well equipped example of a pre-owned Sea Ray 280 Sundancer you will find on the market today. This one owner, well maintained vessel has been extremely well cared for, and is presented in turn key readiness with only 150 hours on her.

With a Kohler 5.0 KW Generator and air conditioning, she has a feel of a much larger vessel. From her upscale interior with cherry woodwork, designer decor, and Flatscreen TV to the large cockpit area with its aft-facing cockpit seat that easily converts to sun pad by simply sliding the seat, you will have all of the necessary features to make any trip enjoyable and comfortable. A walk-thru windshield gives this vessel a large feel in the cockpit as the full beam is utilized with no need for a walk around.

More than ample headroom and effective balance between light colors and warm wood tones make her welcoming down below. On the exterior you have an exhilarating profile and brilliant white hull that will not offer the headache of a high maintenance colored hull. Powered by twin multiport fuel injected 4.3 MPI Mercruiser Alphas with 220 HP each you will have excellent top end performance and surprising economy at cruising speeds. If you are frustrated with looking at well-worn boats of this vintage then please arrange a private viewing as she is sure to please the most discriminating buyer.

Additional Specs, Equipment and Information: **Boat Name** "Reel Sweet" **Specs** Builder: Sea Ray Boats Designer: Sea Ray Flag of Registry: United States Hull Shape: Deep Vee
Dimensions LOA: 31 ft 3 in Beam: 9 ft 5 in Maximum Draft: 3 ft 3 in Displacement: 8600 lbs Deadrise: 21 ° at Transom **Engines** Engine 1: Engine Brand: MerCruiser Year Built: 2007 Engine Model: 4.3 MPI Engine Type: Inboard Engine/Fuel Type: Gas/Petrol Location: Starboard Drive Type: Stern drive Engine Power: 220 HP Engine 2: Engine Brand: MerCruiser Year Built: 2007 Engine Model: 4.3 MPI Engine Type: Inboard Engine/Fuel Type: Gas/Petrol Location: Port Engine Hours: 150 Drive Type: Stern drive Engine Power: 220 HP **Tanks** Fresh Water Tanks: (28 Gallons) Fuel Tanks: (100 Gallons) Holding Tanks: (28 Gallons) **Outside Equipment/Extras** Electric windlass

Vessel Specifications

This is the most immaculate and well equipped example of pre-owned Sea Ray 280 Sundancer you will find on the market today. This one owner, well maintained vessel has been extremely well cared for, and is presented in turn key readiness with only 150 hours on her.

With a Kohler 5.0 KW Generator and the comfort of Air conditioning, she has a feel of a much larger vessel. From her upscale interior with cherry woodwork, designer decor, and Flatscreen

TV to the large cockpit area with its aft-facing cockpit seat that easily converts to sun pad by simply sliding the seat, you will have all of the necessary features to make any trip enjoyable and comfortable. A walk-thru windshield gives this vessel a large feel in the cockpit as the full beam is utilized with no need for a walk around.

More than ample headroom and effective balance between light colors and warm wood tones make her welcoming down below. On the exterior you have an exhilarating profile and brilliant white hull that will not offer the headache of a high maintenance colored hull. Powered by twin multiport fuel injected 4.3 MPI Mercruiser Alphas with 220 HP each you will have excellent top end performance and surprising economy at cruising speeds. If you are frustrated with looking at well worn boats of this vintage then please arrange a private viewing as she is sure to please the most discriminating buyer.

Key Features

- 15" LG Flatscreen TV
- Raymarine Ray 215 VHF
- Northstar Exploror 660 GPS/Plotter
- 12V Satellite-ready AM/FM single CD stereo with six-disc changer, amplifier, six speakers and digital cockpit remote control.
- Convenient galley amenities include a recessed stove, microwave, and dual voltage refrigerator.
- SmartCraft® Diagnostics
- Air Conditioning and Heating 10,000 BTU
- Camper Canvas Package w/Full Enclosure
- Cockpit Canvas
- Kohler 5.0 KW Generator
- Macerator w/Seacock Interlock System
- Windlass, Rope/Chain
- Guest Remote control Spotlight
- Extended swim platform with concealed swim ladder.
- Folding aft seat with hinged legs - lifts with engine hatch.
- Aft-facing cockpit seat easily converts to sun pad by simply sliding the seat aft (no cushions or table to store).
- Gas-assisted engine hatch for easy bilge access.
- Cockpit wet bar
- Lockable fiberglass sliding cabin door with integral steps to foredeck.
- Helm seat with flip-up thigh-rise bolster.
- Full galley with fiberglass granite-colored countertops, recessed stove with cover, sink, refrigerator, and microwave.
- Freshwater washdown, hot and cold transom shower, and dockside water inlet.
- Two dining tables - one in the opposing dinette and one in the V-berth (with designated storage).
- Illuminated weatherproof electronic switch pads with waterproof breaker panels.

- Standard carbon monoxide monitor.
- State-of-the-art control station includes SmartCraft® instruments, weatherproof illuminated switches, power-assisted steering, depth finder, and VHF radio.
- This attractive cockpit wet bar comes full equipped with sink and faucet. Below there's a carry-on cooler with designated storage.
- There's plenty of room in this spacious cockpit with luxuriously padded seats facing both forward and aft.
- 15" LG Flatscreen TV/DVD player can be added to this convenient galley. Additional amenities include a recessed stove, microwave, and dual voltage refrigerator.
- A solid-wood table complements this handsome dining area. Seating converts to an extra bed with the addition of filler cushions.
- Graceful V-berth features a mirrored locker and cherry wood-tone cabinets, plus filler cushions and privacy curtain

Cabin Features

- Carbon Monoxide Monitor
- Carpet, Deep-Pile BCF
- Lighting, 12V
- Outlets, 120V GFI Protected
- Stereo, Clarion®
- Wood Interior Package

Galley

- Countertop, Molded Fiberglass
- Handrail
- Lighting, 12V
- Microwave, 120V
- Outlet, 12V Accessory
- Refrigerator, Dual-Voltage 120V/12V
- Storage, Upper & Lower
- Stove, Electric
- Trash Receptacle

Dinette

- Filler Cushions
- Seating, Opposing Dinette
- Storage, Drawer

- Storage, Gunwale Cabinet
- Table, Dinette
- Electrical Systems Battery Charger/Converter, 120V
- Battery Switch, Dual
- Battery Trays
- Breaker Panels, Waterproof
- Isolator, Galvanic
- Panel, DC Main Breaker
- Panel, Main Distribution - AC
- Shore Power, Dual 120V/30 Amp
- Wiring, Color-Coded

V-Berth

- Filler Cushions
- Hanging Locker
- Mirrored Rope Locker Bulkhead
- Seating, V-Berth
- Storage, Gunwale Cabinets
- Table, Solid Wood

Head

- Handrail
- Head, Enclosed
- Head, VacuFlush®
- Mirror
- Vanity
- Macerator

Head System

- VacuFlush Toilet
- Holding Tank (28-Gallon)
- Holding Tank Level Indicator
- Sump Box
- Macerator w/Seacock Interlock System

Water System

- Freshwater Washdown Spigot
- Pressure Water System
- Shower, Cockpit
- Water Heater (6-Gallon)
- Water Inlet, Dockside
- Water Tank (28-Gallon)

Helm

- Alarms, Engine
- Alarms, High-Water
- Compass
- Horn
- Instrument Panel
- Shift & Throttle Lever
- SmartCraft™ Diagnostics
- Steering, Power-Assisted
- Switch Pads
- Tilt & Trim, Power

Electronics

- Northstar Exploror 660 GPS/Plotter
- Raymarine 215 VHF
- Depth Finder
- SmartCraft® Diagnostics

Engine Room

- Bilge Pump, 12V
- Bilge Pumps, 12V
- Blowers, 12V Bilge (2)
- Fire Suppression System
- Gel-Coated Engine Room
- Insulated Engine Room
- Lighting, 12V

Fuel System

- Fuel Lines (USCG - Type A-1)
- 100 Gallon Fuel Tank

Generator

- Kohler 5.0 KW Generator

Propulsion

- Twin 4.3L MPI with Alpha 1 Outdrives
- Stainless Steel Propellers and Remote Oil Filter

Cockpit Features

- Beverage Holders (7)
- Carpet Liner, Snap-In
- Cooler, Carry-On
- Door, Cabin Entry
- Door, Transom
- Floor Liner, Fiberglass
- Hatch, Engine Room
- Lighting, Indirect
- Outlet, 120V GFI Protected
- Outlet, 12V Accessory
- Seating, Aft Bench
- Seating, Aft-Facing
- Seating, Bucket
- Seating, Lounger
- Sport Spoiler, Molded Fiberglass
- Steps, Boarding
- Storage, Side Panels
- Table, Cockpit
- Wet Bar

Hull & Deck Features

- Windlass and Anchor Chute
- Bow & Stern Eyes
- Bow Rail

- Cleats, Custom Sea Ray® 10" Thru- Bolted (8)
- Deck Fill Plates
- Drain Plug
- Gel Coat, Arctic White
- Graphics, Striping
- Handrail
- Hatch, Deck Vent
- Light, Stern
- Lights, Navigation
- Portlights
- Resin, High-Performance Vinylester
- Rub Rail, PVC
- Storage, Anchor
- Storage, Transom Wall
- Swim Platform, Extended
- Thru-Hull Fittings
- Vent System, Engine Room
- Windshield Wiper
- Windshield, Tempered/Tinted Curved Glass

Under Water Gear

- Trim Tabs, Hydraulic

Canvas

- Bimini Top & Camper Canvas Aft Curtain w/ Full Enclosure
- Canvas Storage Bag
- Front Curtains
- Side Curtains
- Cockpit Cover

Basic Information

Category: Cruiser

Sub Category: Sport Cruiser

Model Year: 2007

Year Built: 2007

Country: United States

Dimensions

LOA: 28' 0" (8.53m)

Beam: 9' 5" (2.87m)

Max Draft: 3' 3" (0.99m)

Speed, Capacities and Weight

Displacement: 8600 Pounds

Water Capacity: 28 Gallons

Holding Tank: 28 Gallons

Fuel Capacity: 100 Gallons

Accommodations

Total Cabins: 1

Hull and Deck Information

Hull Material: Fiberglass

Engine Information

Engines: 2

Manufacturer: Mercruiser

Model: 4.3 MPI

Engine Type: Inboard

Fuel Type: Gas/Petrol

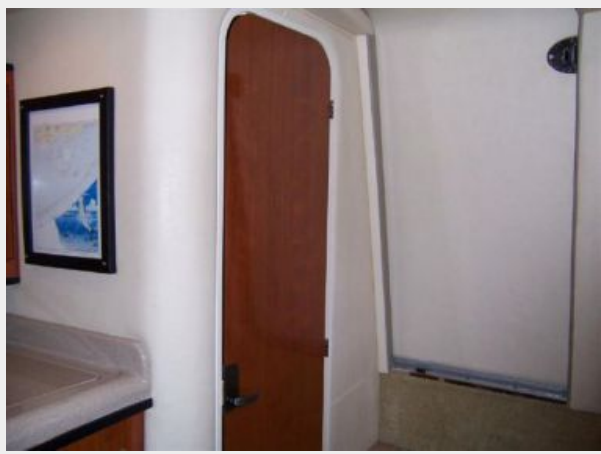
PHOTOS













CONTACTS

Andrey Shestakov, leading yacht broker of the sales department of Shestakov Yacht Sales Inc. Shestakov Yacht Sales Inc., the official representative of the Miami/Fort Lauderdale FL headquarters.

Contact details

Email: andrey@shestakovyachtsales.com

Web: shestakovyachtsales.com/en/

Telephones

USA: +1(954)274-4435

Office hours

Monday – Saturday: **9:00 - 21:00** EDT

Sunday: **closed**

Address



Harbour Towne Marina, 850 NE 3rd St,
STE 213, Dania, FL 33004