

## DOUBLE EAGLE — CABO



**Судостроитель:** CABO

**Длина общая:** 45' 0" (13.72m)

**Год постройки:** 2003

**Ширина:** 15' 8" (4.78m)

**Модель:** Катер для спортивной рыбалки

**Цена:** ЦЕНА ЯХТЫ ПО ЗАПРОСУ

**Местонахождение:** United States

Купить **DOUBLE EAGLE — CABO** а также выбрать подходящую вам яхту из нашего каталога яхт вам поможет опытный яхтенный брокер Андрей Шестаков. На сегодняшний день компания **Shestakov Yacht Sales Inc.** имеет большое количество яхт в собственном списке продаж, а также тесно сотрудничает со всеми крупными яхтенными производителями по всему миру.

Для того чтобы купить яхту **DOUBLE EAGLE — CABO** а также проконсультироваться по любому вопросу связанному с покупкой, продажей, чартером яхт позвоните по телефону **+7(918)465-66-44**.

# ОГЛАВЛЕНИЕ

ОГЛАВЛЕНИЕ	2
ХАРАКТЕРИСТИКИ	5
Основная информация	5
Размеры	5
Скорость, вместимость и масса	5
Размещение	5
Корпус и палуба	5
Информация о двигателе	5
ПОДРОБНОЕ ОПИСАНИЕ	6
VESSEL WALKTHROUGH	6
Исключения	11
Отказ от ответственности	11
ФОТОГРАФИИ	12
Tower	12
Bow View	12
Bow	12
Cockpit	12
Cockpit Forward	12
Cockpit Forward Sink and Freezer	12
Cockpit Forward View	13
Windshield	13
Cockpit View from Tower	13
Cockpit	13
Electrical Panel	13
Electrical Panel	13
Helm Electronics	14
Tower Helm Station	14
Window Frame Condition	14

Tower Metal Condition	14
Tower Metal Condition	14
Helm Deck Aft View	14
Galley	15
Galley	15
Galley Deep Freeze	15
Galley	15
Head	15
Head	15
Helm Deck Port Storage	16
Helm Deck Port	16
Helm Deck Rod Storage	16
Helm deck Seating Port	16
Helm Deck Starboard Storage and Ice Maker	16
Helm Deck Starboard	16
Helm Electronics	17
Helm Electronics	17
Helm Electronics	17
Helm Electronics	17
Helm Station	17
Salon	17
Salon Port	18
Master Stateroom Starboard	18
Salon Looking Forward	18
Master Stateroom	18
Master Stateroom Port	18
Engine Starboard	18
Guest Stateroom	19
Head from Master	19

---

Eskimo Ice Chipper	19
Engine Room Bilge	19
Engine Starboard	19
Engine Port	19
Engine Starboard	20
Engine Room Port Outboard	20
Engine Port	20
Engine Room Starboard Outboard	20
Engine Room Starboard Aft	20
Engine Port	20
Engine Room	21
S/S Shaft Seal with Multiple Spares	21
Engine Room Aft	21
<b>КОНТАКТЫ</b>	<b>22</b>
Контактная информация	22
Телефоны	22
Время работы	22
Адрес	22

# ХАРАКТЕРИСТИКИ

## Основная информация

Тип судна: Катер для спортивной рыбалки

Модельный год: 2004

Год постройки: 2003

Страна: United States

## Размеры

Длина общая: 45' 0" (13.72m)

Ширина: 15' 8" (4.78m)

## Скорость, вместимость и масса

Водоизмещение: 33100 Pounds

Вместимость воды: 100 Gallons

Объем топливного бака: 800 Gallons

## Размещение

Всего кают: 2

Всего ком. состава: 1

## Корпус и палуба

Материал корпуса: Fiberglass

## Информация о двигателе

Двигатели: 2

Производитель: Detroit Diesel

Модель: Series 60

Тип двигателя: Inboard

Тип топлива: Diesel

---

# ПОДРОБНОЕ ОПИСАНИЕ

---

## VESSEL WALKTHROUGH

---

Full tower, Eskimo ice machine, and a full fighting chair are just a few of the fishing highlights.

There is an over-sized traditional style engine room door leading below to the nerve center of this fishing machine. Twin 60 series Detroit's were the upgraded optional choice.

Two steps up from the tournament rigged cockpit is the air conditioned semi enclosed helm deck.

Three steps down and forward from the helm deck leads us to the lower accommodations. This vessel features the optional two stateroom layout. The salon has a huge sofa and a top of the line audio visual package.

The fully equipped galley is to starboard.

The over-sized head is located forward of the galley on the starboard side. This full head has everything you would expect from a Cabo including a shower even a full sized burley fisherman can move around in.

Directly across from the head to port is the second stateroom.

Last but not least, in the forepeak of the vessel, is the master stateroom. She boasts an island queen berth, ample closet space and tons of extra storage.

## COCKPIT

Hard core tournament rigged is how this cockpit was designed. Highlights include:

- Eskimo ice machine
- Twin macerated fish boxes
- Custom installed full size fighting chair
- Livewell
- Tuna door
- Tackle storage
- Cockpit freezer
- Sink and bait prep center
- Cushions on top of prep center for mezzanine style seating

- Pancake style teaser reels under cockpit over hang
- Fresh and salt water wash downs
- Fusion stereo controls with JL audio speakers

## HELM DECK

The climate controlled, semi enclosed bridge deck features a huge I shaped seating area. This seating area could also double as a place to sleep two extra full sized guys on an overnight fishing trip. Additional highlights include:

- Air conditioning (30k BTU)
- Full enclosure
- Twin STIDD chairs
- Massive I shaped lounge
- Optional Raritan ice maker
- Tons of storage
- Tackle drawers
- (2) massive custom molded in overhead rod storage lockers
- JL audio speakers w fusion stereo controls
- Led lighting
- Helm deck carpet
- (2) Bomar hatches in hard top for extra ventilation

## ELECTRONICS

- Twin (DDEC) gauges
- Garmin 6212 chartplotter
- Northstar 6000i chartplotter
- Furuno fcv 1100i color LCD depth sounder/fish finder
- Furuno radar

- Furuno RD 30
- Icom M 602 vhf radio
- Simrad AP 25 auto pilot
- Side power bow thruster
- ACR spotlight
- Cabo redundant mechanical engine gauges
- Fusion stereo
- JL audio speakers
- Ritchie compass
- Sat TV dome
- Northstar unit in tower
- Icom VHF in tower

## **TOWER**

The underside of the tower hardtop above the helm deck has 2 massive rod storage lockers molded into it. These custom lockable rod storage pods free up the storage under the helm deck seating for more cumbersome gear or provisions.

## **SALON**

The spacious comfortable salon is the perfect place to relax after a long day of fishing. Amenities include:

- Huge ultra-leather I shaped sofa
- Flat screen TV
- Sat TV availability (not currently active)
- Hi lo teak high gloss table
- Optional teak and holly sole
- Ample storage

## **GALLEY**

Highlights include:



- Two burner electric cook top
- Panasonic microwave
- Galley deep freezer
- Double refrigerators
- Deep sink
- Corian counter tops
- Satin finished solid teak wood cabinetry
- Ample storage

## HEAD

The full head on board is large enough for a family to share while in the islands and capable enough to handle a crew of hard core fishermen. Her features include:

- Full size shower
- Vaccu flush fresh water head
- Corian counter top
- Under sink storage
- Tank watch holding tank monitoring system
- Air conditioning
- Solid teak satin finished cabinetry
- Large mirror

## GUEST STATEROOM

The optional two stateroom layout of this vessel features a large bunk bed room to port. This second room is very versatile, fully functional, and a must have on a 45' yacht. Whether its intended use is for children, crew, fishing buddies, or just a storage closet, Features include:

- Over sized bunk beds
- Air conditioning
- Ample storage
- Solid teak wood

- Ac/dc lighting
- Overhead hatch for natural light

## **MASTER**

The master stateroom is spacious, comfortable and boasts the understated elegance Cabo is famous for. Her amenities include:

- Island queen berth w/ underneath storage
- Deep storage lockers on port and starboard walls for fishing rods or any kind of additional storage
- Flat screen TV
- Large cedar lined hanging locker
- Solid teak satin finished woodwork
- Air conditioning
- Optional teak and holly sole
- Private head access

## **ENGINE ROOM**

The power plant on this 45 Cabo is the optional 825 hp series 60 Detroit's.

OTHER ENGINE ROOM HIGHLIGHTS ARE AS FOLLOWS:

- 12.5 kw Westerbeke generator (2900 hrs 3/15)
- Eskimo ice machine plumbed to cockpit fish box
- Reverso oil change system
- Racor fuel filters
- Glendenning shore cord recoil system
- Twin disc high performance transmissions 1.75: 1 gear ratio
- Dripless shaft seals with extra shaft seals already on shafts
- 2 1/2" Aquamet 22 shafts
- Gel coat engine room liner

- Emergency crash pump plumbed off stbd engine
- Sea fire automatic fire suppression system
- Ac/dc lighting
- Easy access to sea strainers and other routine maintenance items

## REMARKS

- Cabo pedigree
- Two state rooms
- Custom rod storage
- Custom tower
- Tons of upgraded equipment
- Uncompromised maintenance

## Исключения

---

При продаже яхты исключаются личные вещи владельца.

## Отказ от ответственности

---

Компания предоставляет описание судна или яхты добросовестно, но не может гарантировать точность этой информации, а также не ручается за техническое состояние. Покупатель должен проинструктировать своих агентов или оценщиков исследовать представленную информацию более подробно, по собственному желанию. Продажа судна или яхты, изменение цены или снятие с продажи будет происходить без предварительного уведомления.

# ФОТОГРАФИИ

**Tower**



**Bow View**



**Bow**



**Cockpit**



**Cockpit Forward**



**Cockpit Forward Sink and Freezer**



**Cockpit Forward View**



**Windshield**



**Cockpit View from Tower**



**Cockpit**



**Electrical Panel**



**Electrical Panel**



**Helm Electronics**



**Tower Helm Station**



**Window Frame Condition**



**Tower Metal Condition**



**Tower Metal Condition**



**Helm Deck Aft View**



**Galley**



**Galley**



**Galley Deep Freeze**



**Galley**



**Head**



**Head**



**Helm Deck Port Storage**



**Helm Deck Port**



**Helm Deck Rod Storage**



**Helm deck Seating Port**



**Helm Deck Starboard Storage and Ice Maker**



**Helm Deck Starboard**





**Helm Electronics**



**Helm Electronics**



**Helm Electronics**



**Helm Electronics**



**Helm Station**



**Salon**



**Salon Port**



**Master Stateroom Starboard**



**Salon Looking Forward**



**Master Stateroom**



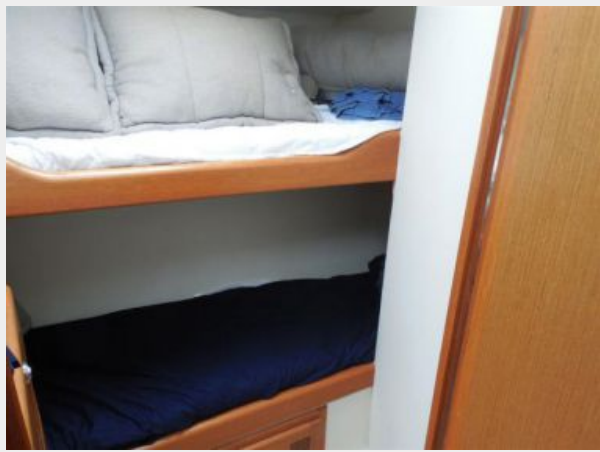
**Master Stateroom Port**



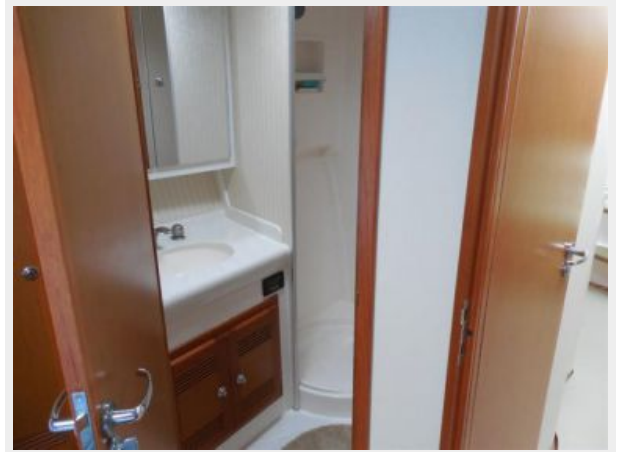
**Engine Starboard**



**Guest Stateroom**



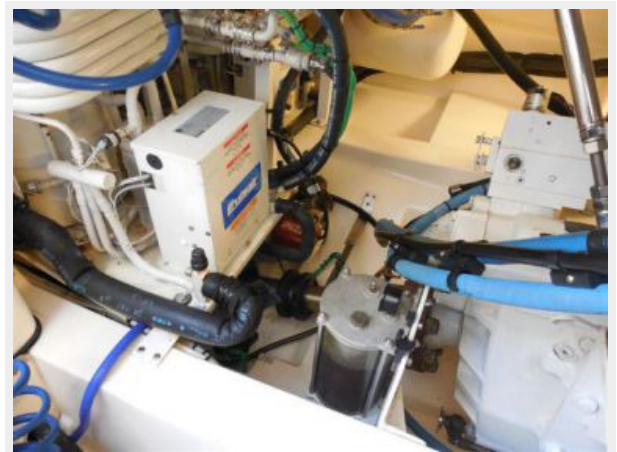
**Head from Master**



**Eskimo Ice Chipper**



**Engine Room Bilge**



**Engine Starboard**



**Engine Port**



**Engine Starboard**



**Engine Room Port Outboard**



**Engine Port**



**Engine Room Starboard Outboard**



**Engine Room Starboard Aft**



**Engine Port**



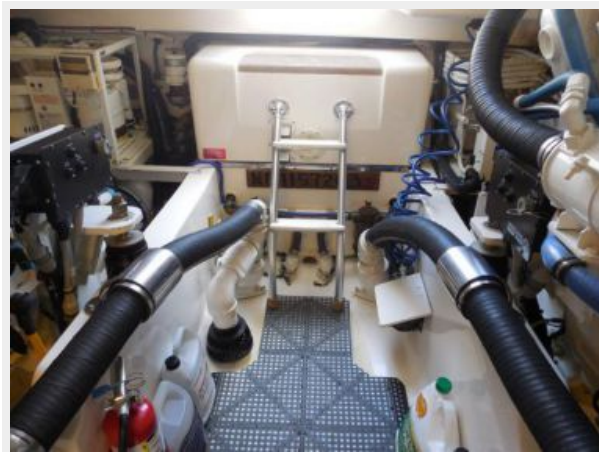
**Engine Room**



**S/S Shaft Seal with Multiple Spares**



**Engine Room Aft**



# КОНТАКТЫ

---

Андрей Шестаков (Andrey Shestakov) – ведущий яхтенный брокер отдела продаж яхт и судов компании Shestakov Yacht Sales Inc. Официальный представитель Shestakov Yacht Sales Inc. для русскоговорящих клиентов в центральном офисе компании в Майами/Форт Лодердейл/Флорида/США.

## Контактная информация

---

Email: [andrey@shestakovyachtsales.com](mailto:andrey@shestakovyachtsales.com)

Web: [shestakovyachtsales.com](http://shestakovyachtsales.com)

## Телефоны

---

Краснодарский край: **+7(918)465-66-44**

США, Майами, Флорида: **+1(954)274-4435**

## Время работы

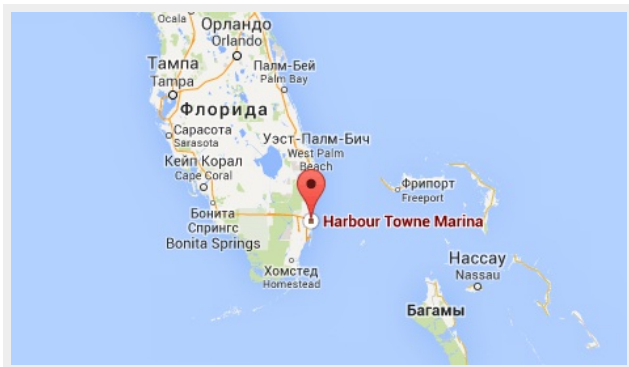
---

Понедельник – Суббота: **9:00 - 21:00**  
EDT

Воскресенье: **Закрито**

## Адрес

---



Harbour Towne Marina, 850 NE 3rd St,  
STE 213, Dania, FL 33004