

36 CUTTER SWAN SONG — BAYFIELD YACHTS



Судостроитель: BAYFIELD YACHTS

Год постройки: 1987

Модель: Крейсерская яхта

Цена: ЦЕНА ЯХТЫ ПО ЗАПРОСУ

Местонахождение: United States

Длина общая: 36' 0" (10.97m)

Ширина: 12' 0" (3.66m)

Мин. осадка: 5' 5" (1.65m)

Купить 36 Cutter Swan Song — BAYFIELD YACHTS а также выбрать подходящую вам яхту из нашего каталога яхт вам поможет опытный яхтенный брокер Андрей Шестаков. На сегодняшний день компания Shestakov Yacht Sales Inc. имеет большое количество яхт в собственном списке продаж, а также тесно сотрудничает со всеми крупными яхтенными производителями по всему миру. Для того чтобы купить яхту 36 Cutter Swan Song — BAYFIELD YACHTS а также проконсультироваться по любому вопросу связанному с покупкой, продажей, чартером яхт позвоните по телефону **+7(918)465-66-44**.

ОГЛАВЛЕНИЕ

ОГЛАВЛЕНИЕ	2
ХАРАКТЕРИСТИКИ	5
Обзор	5
Основная информация	5
Размеры	5
Скорость, вместимость и масса	6
Размещение	6
Корпус и палуба	6
Информация о двигателе	6
ПОДРОБНОЕ ОПИСАНИЕ	7
Accommodations & Layout	7
Galley	7
Electronics & Navigation	8
Mechanical	8
Deck Equipment	8
Sails & Rigging	9
Deck & Hull	9
Electrical	10
Disclaimer	10
Исключения	10
Отказ от ответственности	10
ФОТОГРАФИИ	11
At anchor	11
Freshly waxed hull and bottom paint 2015	11
Full enclosure in good condition	11
Helm seat and teak coaming rail	11
Helm	12
Instruments	12

winches	12
lines lead to cockpit	12
teak interior joinery in salon	12
L settee and drop leaf table	12
Port Salon	13
Starboard salon	13
both settees have leecloths	13
galley	13
nav desk	13
nav equipment	13
Forward pullman berth and side seat	14
cabinets and hanging lockers	14
Head	14
Tub and shower stall	14
Aft double stateroom	15
bi-fold door and hanging locker	15
Clean 44hp Yanmar	15
Bowsprit	15
Electric windlass w/remote	15
Raised cabin top and wide walk around	15
Sails in good condition	16
Butterfly hatch and mast base	16
Stern	16
Port stern	16
2008 AB RIB	16
Outboard hoist	16
SS dingy davits	17
solar panel	17
electric panel	17

neat wiring	17
rigging and fittings	18
chainplate access good	18
protected prop and skeg hung rudder	18
КОНТАКТЫ	19
Контактная информация	19
Телефоны	19
Время работы	19
Адрес	19

ХАРАКТЕРИСТИКИ

Обзор

NEW LISTING!

"Swan Song" just returned from the Bahamas and is CRUISE READY!

She is a capable bluewater vessel as well as a great coastal cruiser. Her deep cockpit and full enclosure ensure a dry, comfortable ride in a stiff breeze! She will turn heads in every port with her beautiful classic lines, clipper bow and sweetheart transom. Take a close look at this one!

The interior layout is well designed with 2 comfortable staterooms, central salon, galley, nav desk and head with shower/tub. She is cutter rigged with roller furling and battened mainsail. Traditional styling features a butterfly hatch, wide walk arounds and teak cockpit coaming rail. Full enclosure, dingy on davits, GPS, radar, autopilot, solar panel, refrigeration. Freshly waxed hull and bottom paint. She is nicely equipped and ready to go!

Основная информация

Тип судна: Крейсерская яхта

Подкатегория: Cutter

Модельный год: 1987

Год постройки: 1987

Страна: United States

Размеры

Длина общая: 36' 0" (10.97m)

Длина по ватерлинии: 30' 6" (9.30m)

Ширина: 12' 0" (3.66m)

Мин. осадка: 5' 5" (1.65m)

Трапы: 49' 0" (14.94m)

Скорость, вместимость и масса

Водоизмещение: 18500 Pounds

Вместимость воды: 100 Gallons

Вместимость сточного бака: 30 Gallons

Объем топливного бака: 54 Gallons

Размещение

Всего кают: 2

Корпус и палуба

Материал корпуса: FRP

Информация о двигателе

Двигатели: 1

Производитель: Yanmar

Модель: 4JHE

Тип топлива: Diesel

ПОДРОБНОЕ ОПИСАНИЕ

Accommodations & Layout

Upon entering the companionway steps you will find the U shaped galley to starboard. The aft stateroom opposite has a bi-fold teak privacy door, double berth and cedar lined hanging locker. The Port side salon an "L" shaped upholstered settee, teak shelving and locker and a drop leaf teak table. Upholstered bench settee opposite, both settees have lee cloths. The nav station is to starboard. Forward is the double offset berth with upholstered side seat, hanging locker and storage. The private head has a manual toilet, sink and vanity and separate tub with shower. There is great ventallation throughout with a butterfly hatch, opening hatches and large opening ports with screens.

Sleeps 7

- tall 6'3" headroom
- teak and holly sole
- teak joinery and cabinets
- molded fiberglass headliner
- nicely upholstered settees
- teak dropleaf table w/ storage cabinet
- butterfly hatch
- 4 opening hatches w/screens
- 10 opening ports w/screens
- teak louvered companionway door
- teak screen companionway door
- 12V fans
- 15.6" HDTV w/antenna
- Sony Marine stereo w/ 2 salon speakers and 2 cockpit speakers

Galley

- Force 10 propane stove and oven w/ counter cover
- spare propane tank
- solinoid
- Microwave
- Adler Barbor deep 12V Refrigeration w/freezer plate (2007)
- Pressure water system
- salt water sink pump
- SS sink
- teak cabinets
- deep storage bins
- abundant provisioning room under settees

Electronics & Navigation

- Owner uses own ipad with Garmin blue charts
- Garmin GPS/Chartplotter 192C
- Raymarine ST6002 Autopilot
- Raytheon 24 mile Radar
- Raytheon Multi display
- Raytheon Tridata
- Raytheon Wind
- ICOM VHF in cockpit
- Raytheon VHF
- Galaxy compass

Mechanical

- 44hp Yanmar diesel 4JHE , approx 2600 hrs
- clean engine
- 50 amp alternator
- spare 35 amp alternator
- fresh water cooled
- raw water heat exchanger
- engine access under companionway steps
- 54 gal aluminum fuel tank
- 2nd tank previously removed, now abundant room for cases of drinks in bilge
- 1 1/4" SS shaft
- 3 bladed bronze propeller 17x10RH
- dripless seal stuffing box
- manual marine toilet w/Y valve and holding tank
- (2) 12V bilge pumps
- manual bilge pump
- shower sump pump
- manuals
- spares

Deck Equipment

- 12V anchor windlass with remote control
- Double anchor roller
- Bruce anchor w/70' chain and 200' rode
- CQR anchor w/30' chain and rode
- SS bow pulpit
- SS stern rails

- stanchions and double lifelines, side gate
- SS side ladder
- Kato SS dingy davits
- Gauhauer SS outboard hoist
- 8'6" AB RIB Inflatable dingy 2008
- Green Sunbrella on cockpit cushions
- Green Sunbrella dodger w/ SS exterior handhold, filler and bimini w/ eisenglass enclosure
- Butterfly hatch and cover
- Sospender PFD's
- Harness and hook ons
- Jacklines
- Ss Padeyes
- Flares
- Horn
- Fire extinguishers
- Magma BBQ grill

Sails & Rigging

- aluminum mast and boom
- 1x19 SS wire standing rigging w/swaged terminals, reported original but serviceable
- Mainsail w/lazy jacks and sail cover - good condition
- Roller furling Jib
- Roller furling Staysail
- lines lead to cockpit
- (2) sets of 4 line stoppers
- (2) Lewmar #43 ST primary winches
- (2) Lewmar #40 2 speed jib winches
- (2) Lewmar #40 2 speed cabin top winches

Deck & Hull

- solid fiberglass construction
- full keel w/ keel hung rudder
- complete peel, new laminate and barrier coat (2006)
- fresh bottom paint (2015)
- protected prop
- encapsulated keel
- original gelcoat topsides in good condition, freshly waxed (2015)
- teak rubrails w/SS strake
- non-skid deck
- raised cabin tops

- high gunnels w/ aluminum toe rail

Electrical

- (2) 8D AGM House batteries (2011)
- Dekka 27 AGM Start battery (2011)
- Heart Freedom 2000 amp/100 watt inverter/charger (2008)
- Link 2000 monitor (2008)
- 160 watt Solar panel w/ controller
- 110V, 30 amp service
- (2) shore power cords
- breaker panel
- GFCI outlets

Disclaimer

The Company offers the details of this vessel in good faith but cannot guarantee or warrant the accuracy of this information nor warrant the condition of the vessel. A buyer should instruct his agents, or his surveyors, to investigate such details as the buyer desires validated. This vessel is offered subject to prior sale, price change, or withdrawal without notice.

Исключения

При продаже яхты исключаются личные вещи владельца.

Отказ от ответственности

Компания предоставляет описание судна или яхты добросовестно, но не может гарантировать точность этой информации, а также не ручается за техническое состояние. Покупатель должен проинструктировать своих агентов или оценщиков исследовать представленную информацию более подробно, по собственному желанию. Продажа судна или яхты, изменение цены или снятие с продажи будет происходить без предварительного уведомления.

ФОТОГРАФИИ

At anchor



Freshly waxed hull and bottom paint 2015



Full enclosure in good condition



Helm seat and teak coaming rail



Helm



Instruments



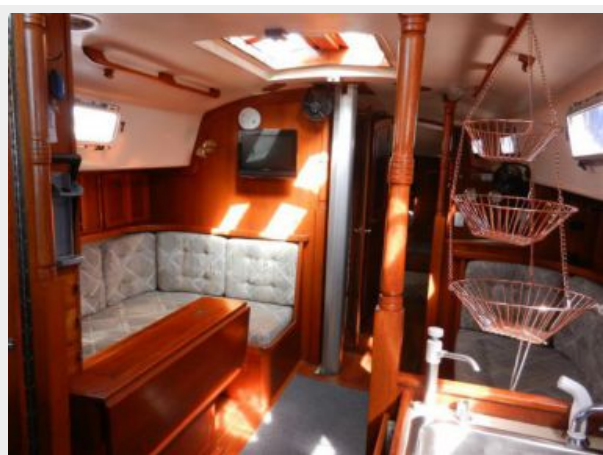
winches



lines lead to cockpit



teak interior joinery in salon



L settee and drop leaf table



Port Salon



Starboard salon



both settees have lee cloths



galley



nav desk



nav equipment



Forward pullman berth and side seat



cabinets and hanging lockers



Head



Tub and shower stall



Aft double stateroom



bi-fold door and hanging locker



Clean 44hp Yanmar



Bowsprit



Electric windlass w/remote



Raised cabin top and wide walk around



Sails in good condition



Butterfly hatch and mast base



Stern



Port stern



2008 AB RIB



Outboard hoist



SS dingy davits



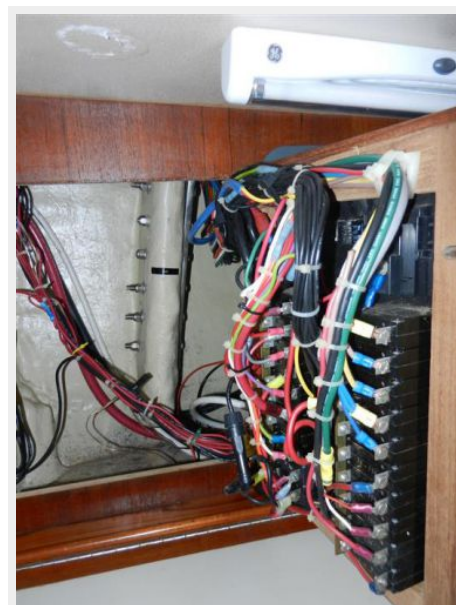
solar panel



electric panel



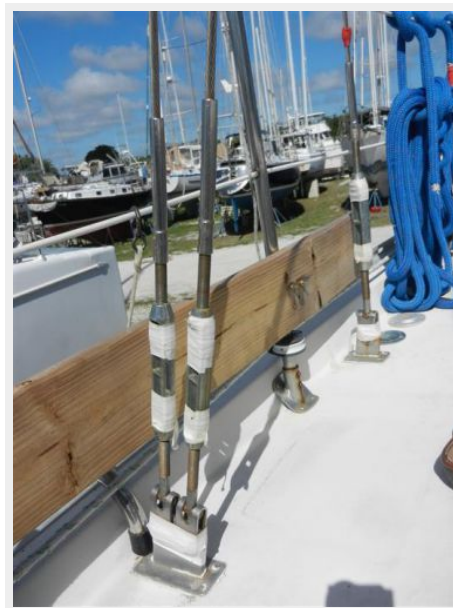
neat wiring



chainplate access good



rigging and fittings



protected prop and skeg hung rudder



КОНТАКТЫ

Андрей Шестаков (Andrey Shestakov) – ведущий яхтенный брокер отдела продаж яхт и судов компании Shestakov Yacht Sales Inc. Официальный представитель Shestakov Yacht Sales Inc. для русскоговорящих клиентов в центральном офисе компании в Майами/Форт Лодердейл/Флорида/США.

Контактная информация

Email: andrey@shestakovyachtsales.com

Web: shestakovyachtsales.com

Телефоны

Краснодарский край: **+7(918)465-66-44**

США, Майами, Флорида: **+1(954)274-4435**

Время работы

Понедельник – Суббота: **9:00 - 21:00**
EDT

Воскресенье: **Закрето**

Адрес



Harbour Towne Marina, 850 NE 3rd St,
STE 213, Dania, FL 33004