

LEOPARD 34 — LEOPARD



Builder: LEOPARD

Year Built: 2008

Model: Motor Yacht

Price: PRICE ON APPLICATION

Location: Italy

LOA: 111' 11" (34.10m)

Beam: 24' 2" (7.35m)

Min Draft: 4' 0" (1.22m)

Max Draft: 4' 0" (1.22m)

Cruise Speed: 35 Kts. (40 MPH)

Max Speed: 40 Kts. (46 MPH)

Our experienced yacht broker, Andrey Shestakov, will help you choose and buy a yacht that best suits your needs **Leopard 34 — LEOPARD** from our catalogue. Presently, at Shestakov Yacht Sales Inc., we have a wide variety of yachts available on our sale's list. We also work in close contact with all the big yacht manufacturers from all over the world.

If you would like to buy a yacht **Leopard 34 — LEOPARD** or would like help answering any questions concerning purchasing, selling or chartering a yacht, please call **+1(954)274-4435**

TABLE OF CONTENTS

TABLE OF CONTENTS	2
SPECIFICATIONS	3
Overview	3
Basic Information	5
Dimensions	5
Speed, Capacities and Weight	5
Accommodations	6
Hull and Deck Information	6
Engine Information	6
PHOTOS	7
CONTACTS	17
Contact details	17
Telephones	17
Office hours	17
Address	17

SPECIFICATIONS

Overview

A beautifully crafted, high performing and lavishly luxurious Arno LEOPARD 34 is suited for groups of families, friends or corporate charter alike. This fascinating motor yacht offers a great combination of speed, style and space taking her guests to those distant locations in record time while providing absolute comfort. The profile conveys its sportive nature and combines research into a high-performance propulsion system with the personalization and comfort of a traditional motor yacht. She is powered by 3 MTU 16V2000 M93 developing 2400 HP capable of reaching up to 40 knots in a comfortable yet very impressive ride. LEOPARD 34 m has a light and modern interior design plus plenty of seating and sunning areas up forward on the bow or back on the aft deck making her a fantastic, stylish and comfortable open style charter yacht. Among her outstanding features, there is a large opening top sunroof, high quality furnishing and entertainment systems. **AUXILIARY MACHINERY & ELECTRICAL SYSTEM**

Gear Boxes: 2 x KaMeWa jets type 63S11 and 50B11 Central Booster

Generators: 2 x Kolher 40 EFOZD (40kW)

Shore Power: 220/24V

Batteries: DE battery master charger Volt 380/220/26/12 volts

Electricity: 380/220V, 3 phase

Water makers: 2 x Idromar water maker (300 L/hr)

SAFETY & SECURITY EQUIPMENT

Safety: EPIRB MC E54, SART Sailor Sart I

Alarms: Fire & bilge pump alarms

Fire Fighting: CO2 system in engine room

Fire extinguishers throughout

Security: Panassonic CCTV x 4

ANCILLIARY EQUIPMENT

Steering System: Rolls Royce Hydraulic steering system KAMEWA

Fire/Bilge Pump: ACM 501 BT/K3

Air Conditioning: Frigomar x 3 V09

COMMUNICATION EQUIPMENT

SSB Radiotelephone: FURUNO 1570

VHF Radiotelephones: SIMRAD RS 82

Intercom System: Pro 700

NAVIGATION EQUIPMENT

Navigation Systems: 6B60 VSI Simrad

GPS: 6ft TFT Simrad CP31

Gyro Compass: RGC50, AR78

Automatic Pilot: AP50

Chart Plotter: 6B60

Sonar: BB

Wind Instruments: GPS

Automatic Identification System: A180

DECK EQUIPMENT

Passerelle: 1 x Besenzoni passarelle

Swimming Platform: Teak laid platform with hydraulic ladder

DOMESTIC EQUIPMENT

Galley: Schiffini Marine Oven

6 Hob Miele

Miele extractor fan

Miele dishwasher

Laundry: Miele washing machine

Miele dryer

TENDERS & WATER SPORT EQUIPMENT

Tender: Williams 4,85 Jet rib 749 cm³

Jet Skis: Jet Ski See Doo RxT

Basic Information

Category: Motor Yacht

Model Year: 2008

Year Built: 2008

Country: Italy

Vessel Top: Electronic Sunroof

Cockpit: Yes

Dimensions

LOA: 111' 11" (34.10m)

Beam: 24' 2" (7.35m)

Min Draft: 4' 0" (1.22m)

Max Draft: 4' 0" (1.22m)

Speed, Capacities and Weight

Cruise Speed: 35 Kts. (40 MPH)

Cruise Speed Range: 400

Max Speed: 40 Kts. (46 MPH)

Displacement: 286600.9406 Pounds

Gross Tonnage: 178 Pounds

Water Capacity: 528.344104 Gallons

Holding Tank: 264.172052 Gallons

Fuel Capacity: 4226.752832 Gallons

Fuel Consumption: 237.7548468 Gallons

Accommodations

Total Cabins: 4

Total Berths: 7

Sleeps: 10

Total Heads: 4

Crew Cabin: 3

Crew Berths: 6

Crew Sleeps: 6

Crew Heads: 3

Hull and Deck Information

Hull Material: GRP

Hull Configuration: Planing

Hull Color: white

Hull Designer: Andrea Bacigalupo

Exterior Designer: Andrea Bacigalupo

Engine Information

Engines: 3

Manufacturer: MTU

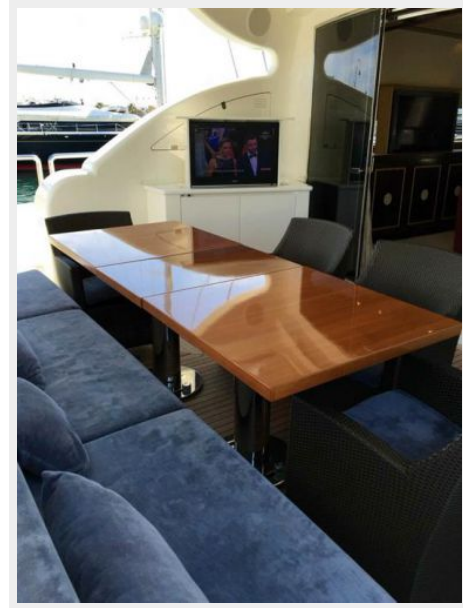
Model: 16V 2000 M93

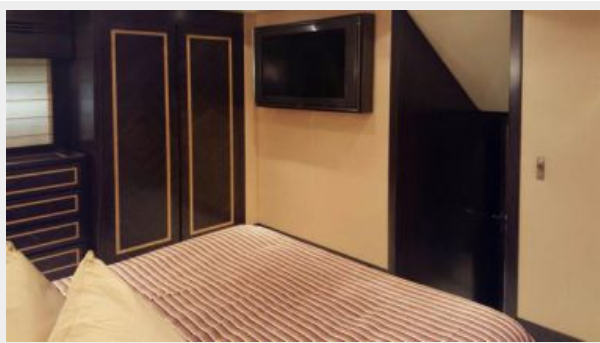
Engine Type: Inboard

Fuel Type: Diesel

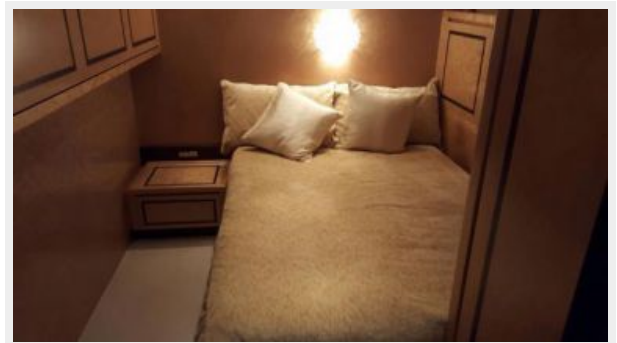
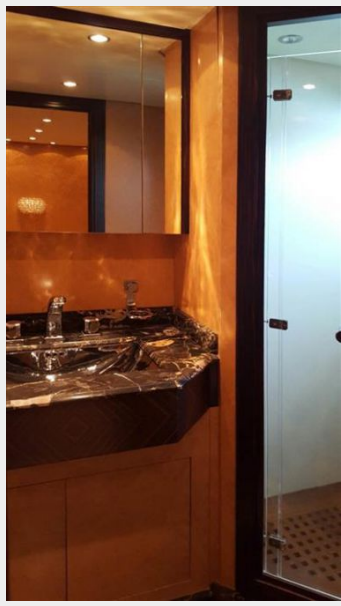
PHOTOS

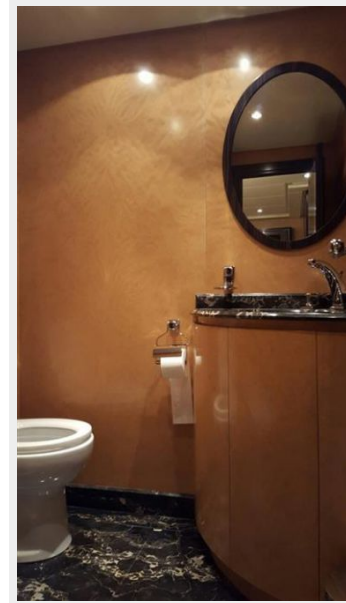


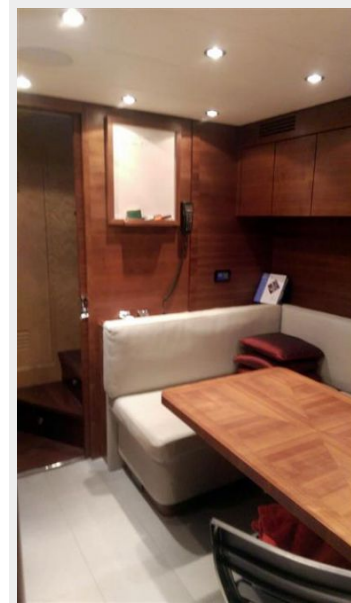
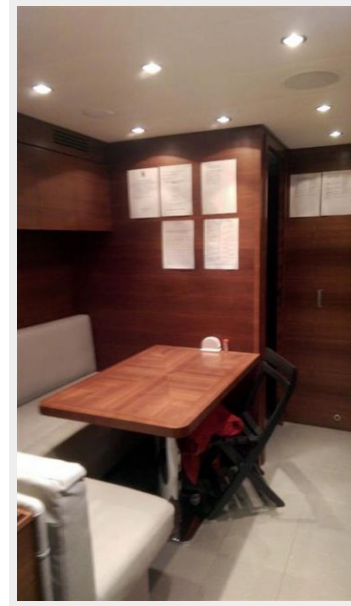


















CONTACTS

Andrey Shestakov, leading yacht broker of the sales department of Shestakov Yacht Sales Inc. Shestakov Yacht Sales Inc., the official representative of the Miami/Fort Lauderdale FL headquarters.

Contact details

Email: andrey@shestakovyachtsales.com

Web: shestakovyachtsales.com/en/

Telephones

USA: +1(954)274-4435

Office hours

Monday – Saturday: **9:00 - 21:00** EDT

Sunday: **closed**

Address



Harbour Towne Marina, 850 NE 3rd St,
STE 213, Dania, FL 33004