

## DUCK SOUP — TRIBUTE



**Судостроитель:** TRIBUTE

**Год постройки:** 1994

**Модель:** Катер для спортивной рыбалки

**Цена:** **ЦЕНА ЯХТЫ ПО ЗАПРОСУ**

**Местонахождение:** United States

**Длина общая:** 58' 0" (17.68m)

**Ширина:** 17' 0" (5.18m)

**Мин. осадка:** 4' 2" (1.27m)

**Макс. осадка:** 4' 6" (1.37m)

**Крейс. скорость:** 35 Kts. (40 MPH)

**Макс. скорость:** 43 Kts. (49 MPH)

Купить **Duck Soup — TRIBUTE** а также выбрать подходящую вам яхту из нашего каталога яхт вам поможет опытный яхтенный брокер Андрей Шестаков. На сегодняшний день компания **Shestakov Yacht Sales Inc.** имеет большое количество яхт в собственном списке продаж, а также тесно сотрудничает со всеми крупными яхтенными производителями по всему миру.

Для того чтобы купить яхту **Duck Soup — TRIBUTE** а также проконсультироваться по любому вопросу связанному с покупкой, продажей, чартером яхт позвоните по телефону **+7(918)465-66-44**.

# ОГЛАВЛЕНИЕ

---

ОГЛАВЛЕНИЕ	2
ХАРАКТЕРИСТИКИ	4
Основная информация	4
Размеры	4
Скорость, вместимость и масса	4
Размещение	4
Корпус и палуба	4
Информация о двигателе	5
ПОДРОБНОЕ ОПИСАНИЕ	6
Broker Remarks	6
Accommodations	6
Salon	6
Galley	6
Dining	7
Master Stateroom Forward	7
Guest Stateroom Starboard	7
Guest Stateroom Port with Ensuite Head	7
Cockpit	7
Flybridge	8
Electronics	8
Fishing Equipment	8
Deck & Hull	8
Electrical	8
Engine & Mechanical	9
Исключения	9
Отказ от ответственности	9
ФОТОГРАФИИ	10
КОНТАКТЫ	16

---

Контактная информация	16
Телефоны	16
Время работы	16
Адрес	16

# ХАРАКТЕРИСТИКИ

## Основная информация

**Тип судна:** Катер для спортивной рыбалки

**Подкатегория:** Convertible

**Модельный год:** 1994

**Год постройки:** 1994

**Страна:** United States

**Открытая палуба мостика:** Да

**Кубрик:** Да

## Размеры

**Длина общая:** 58' 0" (17.68m)

**Ширина:** 17' 0" (5.18m)

**Мин. осадка:** 4' 2" (1.27m)

**Макс. осадка:** 4' 6" (1.37m)

## Скорость, вместимость и масса

**Крейс. скорость:** 35 Kts. (40 MPH)

**Макс. скорость:** 43 Kts. (49 MPH)

**Вместимость воды:** 220 Gallons

**Объем топливного бака:** 1550 Gallons

## Размещение

**Всего кают:** 3

**Спальные места:** 7

**Всего ком. состава:** 3

## Корпус и палуба

**Материал корпуса:** Fiberglass

**Цвет корпуса:** Ice Blue

**Дизайнер корпуса:** Rick Scheffer

## Информация о двигателе

---

**Двигатели:** 2

**Производитель:** MAN

**Модель:** V12 CRM

**Тип топлива:** Diesel

---

## ПОДРОБНОЕ ОПИСАНИЕ

---

### Broker Remarks

---

***\$ 3,500,000 replacement cost! The "Duck Soup" was built as "Escapade" for repeat custom sportfish owner, Hank Manley. She is perhaps the perfect size custom Sportfish for the owner seeking speed, comfort and efficiency. The "Duck Soup" is offered for sale by one of the most knowledgeable owner/operators as he has another custom Sportfish project underway. She was built with one of the best custom Sportfish layouts ever incorporating luxurious 3 staterooms and 3 heads in a 58' fleet yacht. With her new Common Rail 1360hp MAN's, "Duck Soup" runs 28 knots at 1600 RPM's burning 62 gallons per hour. Run her up to 1850 RPM's and enjoy a 33 knot easy cruise at 80 gallons per hour. For long range 600 RPM cruising, make 8 1/2 knots at 6 gallons per hour, 700 RPM's at 10 1/2 knots at 12 gallons per hour. She will top 43 knots at 2370 turns. With modern Common Rail MAN power, a new mezzanine and a timeless classic teak interior, the "Duck Soup" should be the very next custom sportfish to sell!***

### Accommodations

---

As you enter the salon of DUCK SOUP from the cockpit mezzanine deck through the centerline door you will find it very open and spacious. The galley is located forward of the salon on the same level. Moving forward down the companionway, the guest cabins are to port and starboard with both staterooms including en-suite heads. The master stateroom is forward and also features an en-suite head.

Over the past two years nearly all soft goods have been updated.

### Salon

---

• Centerline access door • Teak and holly entranceway • L-shaped leather sofa to port • Custom Blue Marlin and Swordfish Lamps • Barrel chairs to starboard • Hi-Lo teak coffee table with leaves • Teak credenza to port • Window blinds and drapes - new 2010 • Teak soffits • U-line Ice Maker • Dell Computer • KVH Tracvision • Direct TV & HD-DVR • 42" Pop-up LG • Yamaha RX A730 Receiver • MX890i Smart Controller • HP Envy 4500 Fax/scanner copier • Glomex TV Antenna • Sharp Blue Ray Player • Surround Sound Speakers • DVD/CD player • New carpeting 2013

### Galley

---

• Located portside forward of salon. • Molded Corian countertops and sink - New 2011 • Under

counter refrigerator/freezer – Kitchen Aid 2010 • Microwave/convection oven • Concealed two-burner cook top • Teak and Holly sole • Teak sea rail • Ships electrical panel concealed in galley island • Abundant galley storage throughout

---

## Dining

---

• Located across from the galley to starboard is the dinette L-shaped seating with storage • Teak dinette table • Teak credenza forward w/ample storage

---

## Master Stateroom Forward

---

The full beam master stateroom has the bed to port on a 45 degree angle with a large head forward. The Tribute layout is an excellent example of design and use of space. • Queen berth athwartship with storage below • Mirrored head board • Teak end tables and drawer storage • Teak credenza with (6) drawers • (2) Large his/hers hanging lockers • Overhead teak soffit for A/C discharge • Reading lamps and end tables • Double mirrored door entertainment center • 37" Plasma television, hinged to access storage area • Overhead hatch • Private access to ensuite head • Mirrored vanity with storage • Molded Corian countertop and sink • Stall shower with mirrored forward bulkhead • Linen closet • Teak sole • New carpeting, 2013

---

## Guest Stateroom Starboard

---

• Upper/lower berths • Drawer storage below lower berth • Teak end table w/storage • Hanging locker • Reading lamps • Access to semi-private head • Mirrored vanity w/storage • Molded Corian counter and sink • Stall shower • Teak and Holly sole

---

## Guest Stateroom Port with Ensuite Head

---

• Upper/lower berths athwartship • Drawer storage below lower berth • End table with drawer storage • Hanging locker • Reading lamps • Access to private en-suite head • Mirrored vanity w/storage • Molded Corian counter and sink • Stall shower • Teak sole • Overhead access hatch

---

## Cockpit

---

• Mezzanine seating added 2006 • Refrigerated drink box, port • Bait freezer - New compressor 2013 • BBQ grill, starboard • Ice chipper storage bin, starboard • Fish box • Tackle locker • Live bait well, 60 gallon • Lazarette access port and starboard • Transom door • Teak decks, New 2011 • Electric reel outlets • Under gunnel lighting • Murray Bros fighting chair w/rocket

launcher • Cockpit misters in overhead and under covering boards • Fresh/saltwater wash down • Gaff lockers port and starboard • Cockpit/fly bridge cover • Re-painted in 2010

---

## Flybridge

---

• MAN digital engine display with external switching • Control to link salon and stereo • Sea Five Haylon system • Ritchie Powerdamp Compass • Rexroth Single lever controls • Lenco trim tab switch with top gauge position • MAN MMDS - CLC 6.3 • Flow Scans • Centerline helm • Power steering • Single lever controls, Rexroth • Hydraulic wheel steering • Lenco trim tabs • Murray teak ladder back helm chairs, 2009 • Teaser reels • Molded in tri-color lights in hardtop • 3-Sided bridge enclosure 2015 • L-shaped seating forward on console w/storage • Storage in forward fly bridge • Bridge cushions replaced 2008 • Air horn, New 2013 • 6-Man life raft, New 2012

---

## Electronics

---

• Simrad autopilot AP 26 • SAT TV system • Furuno F1-50 • NavNet TZ 12.4", New 2013 • Garmin 8215 Chart/fish finder New 2013 • Furuno FCV 1150 digital depthfinder • (2) ICOM M504 HF Marine radios, New 2013 • Fusion MS AV700 Stereo/CD, New 2013 • Overhead speakers for VHF's • (4) JL Audio 6.5 speakers • Radar, New 2013 • New gauges, 2013

---

## Fishing Equipment

---

• High seas full tuna tower w/controls • Rupp outriggers w/center rigger • Murray fighting chair • Fish box • Live bait well • Eskimo ice machine • LED Underwater lights, 2012 • LED Flood lights, New 2013

---

## Deck & Hull

---

• The hull thickness is 3 layers of 9mm Okume with 18oz of Biax fiberglass between each layer for a total thickness of 1 1/2" • The stringers are laminated Douglas Fir, a dense oil wood that resists rot • Completely repainted in 2008 by Trinity Boat Works • Ice blue hull color • Bottom striped by Soda blasting 2008 • Tribute trim tabs • LED Underwater lights, New 2012 • Anchor locker, foredeck • (3) Bomar hatches on foredeck, replaced 2008

---

## Electrical

---

• Boat is wired to run off (1) 50amp shore cord or if needed an additional cord can be used for a total of (2) 50amp 220 volt cords. • 20kW Norpro Marine generator New in 2010, 4350 hours as of March 2015 • Main engine starting batteries • Separate house bank batteries • Battery



parallel system

## Engine & Mechanical

---

- MAN V-12 1360 CRM engines rates @ 1360hp, installed Oct, 2011 • 20kW Marine Genset w/sound shield, installed 2010 • Eskimo ice machine • Oil change system • Power assist steering system • 1,200gpd, HRO Systems Sea Recovery water maker, rebuilt 2009 • Teak and holly sole • Fuel prime pumps • Battery disconnect switches • Fire system • High water alarm • Dripless shaft seals • Whirlpool Washer/dryer located in the pump room, New 2010 • Fresh water system • A/C Circulator pump, New 2013 • New props, shafts, and strut bearings, 2011 • Charles 60amp 5000 SP Battery Charger • Sentry 6240-3NCL 50amp Battery Charger
- Headhunter Mach 5 fresh water pump with Wellxtroll accumulator tank • Raritan 1700 Series Marine hot water tank

## Исключения

---

При продаже яхты исключаются личные вещи владельца.

## Отказ от ответственности

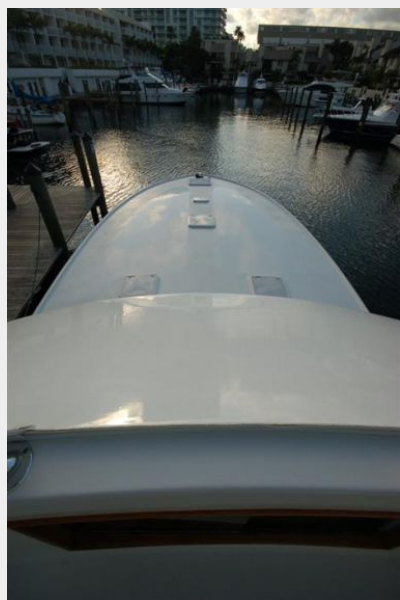
---

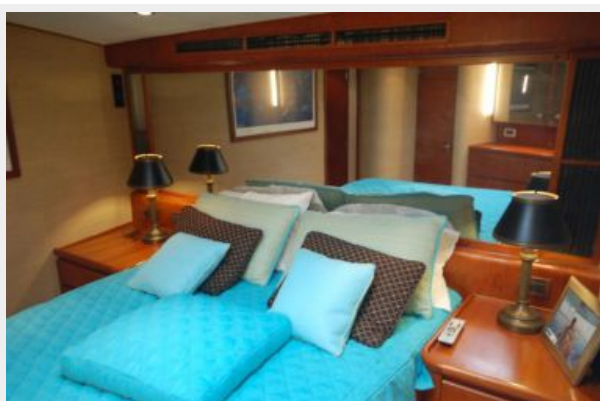
Компания предоставляет описание судна или яхты добросовестно, но не может гарантировать точность этой информации, а также не ручается за техническое состояние. Покупатель должен проинструктировать своих агентов или оценщиков исследовать представленную информацию более подробно, по собственному желанию. Продажа судна или яхты, изменение цены или снятие с продажи будет происходить без предварительного уведомления.

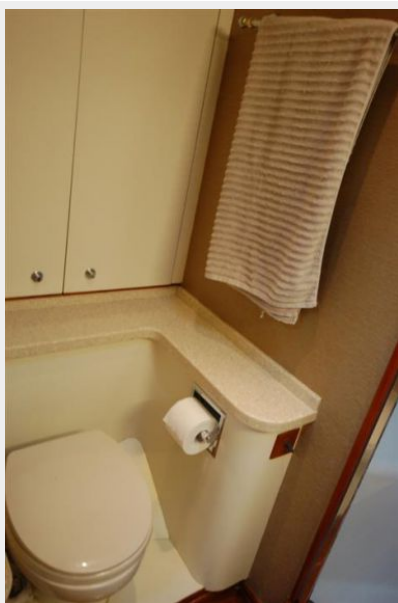
# ФОТОГРАФИИ













# КОНТАКТЫ

---

Андрей Шестаков (Andrey Shestakov) – ведущий яхтенный брокер отдела продаж яхт и судов компании Shestakov Yacht Sales Inc. Официальный представитель Shestakov Yacht Sales Inc. для русскоговорящих клиентов в центральном офисе компании в Майами/Форт Лодердейл/Флорида/США.

## Контактная информация

---

Email: [andrey@shestakovyachtsales.com](mailto:andrey@shestakovyachtsales.com)

Web: [shestakovyachtsales.com](http://shestakovyachtsales.com)

## Телефоны

---

Краснодарский край: **+7(918)465-66-44**

США, Майами, Флорида: **+1(954)274-4435**

## Время работы

---

Понедельник – Суббота: **9:00 - 21:00**  
EDT

Воскресенье: **Закрито**

## Адрес

---



Harbour Towne Marina, 850 NE 3rd St,  
STE 213, Dania, FL 33004