

NIMBUS — ISLAND PACKET YACHTS



Судостроитель:

ISLAND PACKET YACHTS

Год постройки: 1996

Модель: Крейсерская яхта

Цена: **ЦЕНА ЯХТЫ ПО ЗАПРОСУ**

Местонахождение: United States

Длина общая: 45' 0" (13.72m)

Ширина: 13' 3" (4.04m)

Мин. осадка: 4' 10" (1.47m)

Крейс. скорость: 7 Kts. (8 MPH)

Макс. скорость: 9 Kts. (10 MPH)

Купить **NIMBUS — ISLAND PACKET YACHTS** а также выбрать подходящую вам яхту из нашего каталога яхт вам поможет опытный яхтенный брокер Андрей Шестаков. На сегодняшний день компания **Shestakov Yacht Sales Inc.** имеет большое количество яхт в собственном списке продаж, а также тесно сотрудничает со всеми крупными яхтенными производителями по всему миру.

Для того чтобы купить яхту **NIMBUS — ISLAND PACKET YACHTS** а также проконсультироваться по любому вопросу связанному с покупкой, продажей, чартером яхт позвоните по телефону **+7(918)465-66-44**.

ОГЛАВЛЕНИЕ

ОГЛАВЛЕНИЕ	2
ХАРАКТЕРИСТИКИ	5
Обзор	5
Основная информация	5
Размеры	5
Скорость, вместимость и масса	5
Размещение	5
Корпус и палуба	6
Информация о двигателе	6
ПОДРОБНОЕ ОПИСАНИЕ	7
Overview	7
Guest Accommodations	7
Galley	8
Salon	8
Electronics and Navigation	8
Engines and Electrical	9
Deck Equipment	9
Sails, Spars, and Rigging	10
Исключения	10
Отказ от ответственности	11
ФОТОГРАФИИ	12
MAST AND BOOM W/ VANG	12
MAINSAIL W/ DOYLE AND STACKPACK	12
BOW AND WINDLASS DETAIL	12
CHROME DORADES	12
HARD DODGER AND BIMINI	13
UNDER DODGER LIGHTS	13
HELM	13

COCKPIT CUSHIONS	13
CAFE STYLE DOORS (CLOSED)	14
CAFE STYLE DOORS (OPEN)	14
COMPANIONWAY STAIRS	14
GALLEY	14
GALLEY	14
STOVE TOP	14
OVEN	15
REFRIGERATOR OPEN	15
REFRIGERATOR (CLOSED) AND DINNERWARE STORAGE	15
NAVIGATION STATION	15
SALON	16
SALON PORT SIDE	16
SALON W/ TABLE DOWN	16
SALON STARBOARD SIDE	16
LARGE CHART DRAWER	16
STORAGE UNDER SALON SETTEES	16
OWNER'S STATEROOM CABINETS/LOCKER	17
OWNER'S STATEROOM	17
ANCHOR LOCKER	17
OWNER'S ENSUITE HEAD	17
GUEST HEAD	18
GUEST STATEROOM	18
BATTERIES PORT SIDE SALON	18
WATERMAKER STARBOARD SALON	18
STARBOARD ENGINE ACCESS W/ DOOR MOUNTED FILTER	19
YANMAR ENGINE W/ HIOUTPUT ALTERNATOR	19
PANDA GENERATOR STARBOARD LAZARETTE	19
BOW THRUSTER	19

LARGER RUDDER W/ 3-BLADE PROP	20
FULL LENGTH KEEL	20
NIMBUS LAYOUT	20
КОНТАКТЫ	21
Контактная информация	21
Телефоны	21
Время работы	21
Адрес	21

ХАРАКТЕРИСТИКИ

Обзор

Основная информация

Тип судна: Крейсерская яхта	Подкатегория: Aft Cockpit
Модельный год: 1996	Год постройки: 1996
Страна: United States	Кубрик: Да

Размеры

Длина общая: 45' 0" (13.72m)	Длина по ватерлинии: 38' 0" (11.58m)
Ширина: 13' 3" (4.04m)	Мин. осадка: 4' 10" (1.47m)
Трапы: 60' 0" (18.29m)	

Скорость, вместимость и масса

Крейс. скорость: 7 Kts. (8 MPH)	Макс. скорость: 9 Kts. (10 MPH)
Водоизмещение: 28400 Pounds	Вместимость воды: 240 Gallons
Вместимость сточного бака: 45 Gallons	Объем топливного бака: 140 Gallons

Размещение

Всего кают: 2	Всего коек: 4
Спальные места: 7	Всего ком. состава: 2

Корпус и палуба

Материал корпуса: Fiberglass

Материал палубы: Fiberglass

Комплектация корпуса: Long Keel

Информация о двигателе

Двигатели: 1

Производитель: Yanmar

Модель: 4JH2 TE

Тип двигателя: Inboard

Тип топлива: Diesel

ПОДРОБНОЕ ОПИСАНИЕ

Overview

This Island Packet 45 design won *Cruising World's* coveted **1996 Overall Boat of the Year**. The award cited the 45's "exceptional safety and sea keeping, unmatched comfort and living ability, solid/superb craftsmanship and sparkling performance." **Nimbus** has been maintained for coastal and island cruising with a Panda Generator, Air Conditioning, Bow Thruster, Water Maker, newer ST60 Electronics, Harken Battcars, Doyle Stackpack, and Wind Generator. She has been meticulously serviced. All owner's and equipment manuals as well as their maintenance records are available. **Nimbus** embodies all the proven attributes that have earned Island Packet Yachts their international reputation for excellence in cruising yacht design and quality of construction. It is one of the few designs that is comfortable cruising in protected waters as well as crossing oceans to distant shores. The sail plan for this boat is the very versatile cutter rig, which is easily handled by a shorthanded crew and easily adapted to changing conditions. Engineered with all lines leading to the cockpit so the boat can be sailed solely from there, if desired. With a thoughtful layout, **Nimbus** affords its owner comfortable accommodations for living aboard or gracious entertaining. The **Anchor Locker** is at the bow and accessed through the forward bulkhead. The **Owner's Stateroom** is forward with its **Ensuite Head** farthest forward followed by the **Private Owner's Berth**. The **Salon** is next aft with a large, well organized **Nav Station** starboard and has a draining wet locker on the hull side. Continuing aft you will then find the **Galley**. The centerline **Companionway** separates the galley from the aft head and is over the **Engine Compartment**. The **Aft Head** is across on port with access from the aft cabin as well as the saloon area and you will then locate the **Guest Stateroom**.

Guest Accommodations

The **Owner's Stateroom** is forward with its **Ensuite Head** farthest forward with a locking bi-fold door. It features a sink to port, an aft facing commode and a shower area to starboard with storage above and below the sink, 2 cabinets in the bulkhead, and a clever vanity on starboard. The head is well ventilated with 2 opening ports and an opening hatch. Following aft is the **Private Owner's Berth** with a huge Pullman Berth with custom Verlo Mattress to starboard. There are 4 storage drawers under the berth and a large cedar lined hanging locker, and 3 drawer bureau across on port. The Cabin is light and airy with 4 opening ports and an opening hatch. The **Salon** is next aft and the starboard settee converts to a double berth providing sleeping accommodations in the saloon for three, if necessary. The large **Aft Head** is across on port with access from the aft cabin as well as the saloon area. It has a sink, shower area with seat, commode and good storage above and below the counter. It stays cool with 2 opening ports and a hatch. The **Guest Stateroom** follows aft and provides comfortable accommodations for two adults with room to dress by the entrance. A hanging locker, a bank of storage cubbies a dressing seat and plenty of light and ventilation make this a comfortable cabin even for extended periods.

Galley

Spacious with an unequaled prep and storage areas plus custom dinnerware storage. A deep, double stainless sink, large top loading refrigerator with freezer bin, three burner propane stove with oven, Microwave allow easy service to the salon as well as the cockpit. All Island Packets have a fiberglass non-skid sole in the galley and companionway areas which is safe and easy to clean.

- Adler Barbour Super Cold Machine
- Princess 3-Burner/Oven Propane Stove
- GE 800 Watt Microwave Oven
- Hot Cold Pressure Water
- Galley Single Arm Lever H/C Faucet with Sprayer
- Galley Mechanical Faucet
- Galley Water Maker Sample Faucet
- Village Marine Tec Water Maker See Engine/Mechanical)
- All Equipment Manuals (Some on CD)
- Cruisair AC (See Engine/Mechanical)

Salon

The **Salon** is next aft featuring Island Packet's signature bulkhead mounted table making the salon a large living room when the meal is through. Its facing settees provide comfortable accommodations for living aboard or gracious entertaining. The starboard settee converts to a double berth providing sleeping accommodations in the salon for three, if necessary. Beneath and behind the cushions is plenty of storage and a large chart drawer plus there are shelves and cabinets along both hull sides.

Electronics and Navigation

The large, well organized, Navigation Station is located starboard and has an especially comfortable and adjustable cushioned arm chair. All the navigation equipment and displays are easily seen and reached. There is also a draining wet locker on the hull side.

- Raymarine ST60+ Depth sounder, Knot meter & Wind Speed/Direction Instruments
- Raymarine Depth & Knot meter Retractable Transducers
- ICOM CLASS B AIS Transponder MA-500TR w/ GPS at Navigation Station w/ remote Mic for cockpit.
- Furuno 841 MK2 24 Mile Radar at Nav Station & at Helm w/Furuno C1900 (RDP-139) Integrated Chartplotter 10.5" Display
- 3 - C-Map Wide Charts Albermarle to Shinnecock; Cape Cod, Long Island & Hudson River; Bahamas
- Simrad Robertson AP20 Hydraulic Autopilot
- ICOM VHF Radio at Navigation Station IC-M127
- ICOM command MIC III VHF Radio

- CD Player/Radio with Stereo Speakers
- Vizio 22" Flatscreen w/TrackIt TV Module for Subscription Reception such as Direct TV or Dish Network

Engines and Electrical

Nimbus is powered by a 4 cylinder, turbo charged, fresh water cooled, 62HP Yanmar 4JH2E TE Diesel with 5148 hours. She has been well maintained by very knowledgeable owners.

- Cruisair 16000 BTU Stowaway Turbo Reverse Cycle Air Conditioner w/Insulated Ducts & Rust Free Pan
- Village Marine Tec 18 gph Water Maker w/Maintenance/Rebuild Kit & Pickling Powder.
- Jabsco Sensor Max VSD 5 gpm
- Shower Pump
- Macerator Pump w/Switch
- Head Pumps
- All Sanitation Hoses and Tank Vent Hose Replaced w/Poly X 2009/2010
- Tank Watch Gauge in Saloon Reads for Holding Tank

Nimbus has both a 12 Volt Ship's System and 2 - 120 Volt Shorepower Electrical Systems with one of those dedicated to the Air Conditioning.

- Fisher Panda 6KW Generator with 1273 hours w/Sound Shield with dedicated Start Battery, Water/Exhaust Separator, Optional Soft Motor Mounts, & Spare Parts Kit
- 11 Gallon Hot Water Heater
- Xantrex Freedom 50 - 100 Amp Battery Charger/2000 Watt Inverter
- Link 1000 Charger Control/Monitor
- 5 - Lifelong AGM G27 Batteries
- Balmar 100 Amp High Output Alternator Rebuilt
- Balmar ARS-5 Multistage Programmable Regulator
- AirX 400 Watt Wind Generator
- Hitachi 60 Amp Spare Alternator

Deck Equipment

The 45's cockpit is plenty large for sailing, entertaining and napping. The binnacle features a drink holder and a table and provides a place for the engine and navigation equipment plus a great view from the helm.

- Bottom Paint: Blue Water Copper Pro SCX 67 Ablative Paint
- Westmar Bow Thruster
- Lofrans Windlass with Remote at Helm
- Bruce 66# with 200' of G4 Chain

- CQR with 200' Nylon Rode
- Raw Water Anchor Wash-down
- Fresh Water Spray in Cockpit
- Six 3/4" Military Spec Double Braid Dock Lines
- Lippincott Hardtop Dodger with Side handles & Lights on Underside
- Bimini with Sighting Window and Full Enclosure including Connect Panel
- Cockpit Cushions
- Cockpit Table and Drink Holder
- Dinghy Davits
- Edson Outboard Motor Lift and Rail Mount
- USCG Safety Package and Mast Mounted Horn
- DSB Sola 6 Person Offshore Life raft
- Lifesling MOB System
- McMurdo EPIRB
- OGM LED Anchor Light at Masthead

Sails, Spars, and Rigging

The Island Packet 45 has a double spreader, high aspect ratio, mast head cutter rig.

- Fully Battened, Loose Footed Mainsail with 2 Reef Points
- High Cut 135% Genoa
- Harken MKII Headsail & Staysail Furling Systems
- Staysail
- Cruising Spinnaker (1580 sq ft) with Dousing Sock ATN Tacker, with complete Hardware and Running Rigging
- All Halyards Replaced in 2008
- Sunbrella Linen Stackpack Mainsail System
- Genoa & Staysail Sunbrella Sacrificial Covers
- Topping Lift
- Chainplates Rebedded 2010, Rig Tuned 2011, Mastboot 2008
- Boom Vang
- Lewmar Halyard Winches on Mast
- Lewmar Mainsheet & Main Halyard Winch on Coach Roof
- Lewmar Staysail Sheet & Main Reefing Winch on Coach Roof
- Lewmar Primary Winches
- Lewmar Genoa Furling Winch
- Coach Roof Rope Clutches for Mainsail Reefs, Sheet, & Halyard

Исключения

При продаже яхты исключаются личные вещи владельца.

Отказ от ответственности

Компания предоставляет описание судна или яхты добросовестно, но не может гарантировать точность этой информации, а также не ручается за техническое состояние. Покупатель должен проинструктировать своих агентов или оценщиков исследовать представленную информацию более подробно, по собственному желанию. Продажа судна или яхты, изменение цены или снятие с продажи будет происходить без предварительного уведомления.

ФОТОГРАФИИ

MAINSAIL W/ DOYLE AND STACKPACK



MAST AND BOOM W/ VANG



BOW AND WINDLASS DETAIL



CHROME DORADES



HARD DODGER AND BIMINI



UNDER DODGER LIGHTS



HELM



COCKPIT CUSHIONS



CAFE STYLE DOORS (CLOSED)



CAFE STYLE DOORS (OPEN)



COMPANIONWAY STAIRS



GALLEY



GALLEY



STOVE TOP



OVEN



REFRIGERATOR OPEN



**REFRIGERATOR (CLOSED) AND
DINNERWARE STORAGE**



NAVIGATION STATION



SALON



SALON PORT SIDE



SALON W/ TABLE DOWN



SALON STARBOARD SIDE



LARGE CHART DRAWER



STORAGE UNDER SALON SETTEES



OWNER'S STATEROOM CABINETS/LOCKER



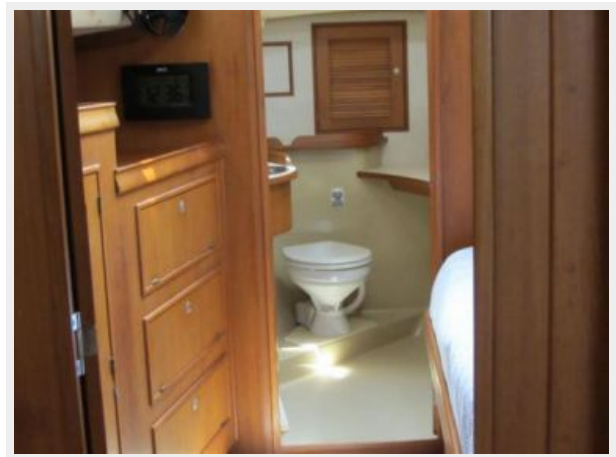
OWNER'S STATEROOM



ANCHOR LOCKER



OWNER'S ENSUITE HEAD



GUEST STATEROOM



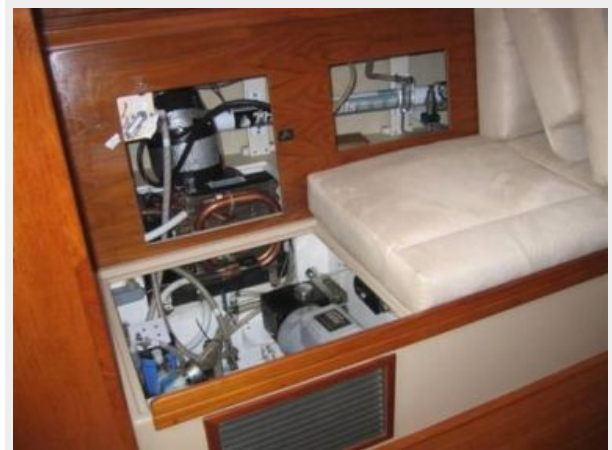
GUEST HEAD



BATTERIES PORT SIDE SALON



WATERMAKER STARBOARD SALON



**STARBOARD ENGINE ACCESS W/ DOOR
MOUNTED FILTER**



**YANMAR ENGINE W/ HIOUTPUT
ALTERNATOR**



**PANDA GENERATOR STARBOARD
LAZARETTE**



BOW THRUSTER



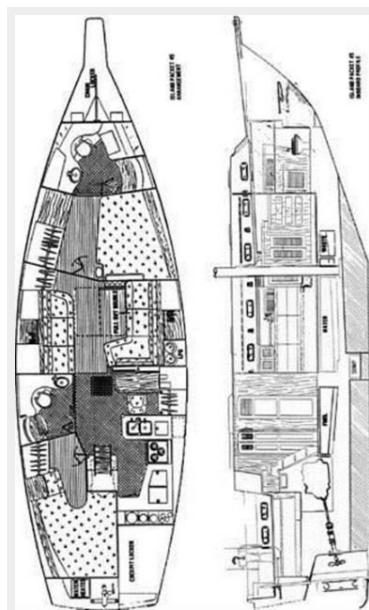
LARGER RUDDER W/ 3-BLADE PROP



FULL LENGTH KEEL



NIMBUS LAYOUT



КОНТАКТЫ

Андрей Шестаков (Andrey Shestakov) – ведущий яхтенный брокер отдела продаж яхт и судов компании Shestakov Yacht Sales Inc. Официальный представитель Shestakov Yacht Sales Inc. для русскоговорящих клиентов в центральном офисе компании в Майами/Форт Лодердейл/Флорида/США.

Контактная информация

Email: andrey@shestakovyachtsales.com

Web: shestakovyachtsales.com

Телефоны

Краснодарский край: **+7(918)465-66-44**

США, Майами, Флорида: **+1(954)274-4435**

Время работы

Понедельник – Суббота: **9:00 - 21:00**
EDT

Воскресенье: **Закрето**

Адрес



Harbour Towne Marina, 850 NE 3rd St,
STE 213, Dania, FL 33004