

## BABY GRAND — JUPITER



**Builder:** JUPITER

**Year Built:** 2003

**Model:** Center Console

**Price:** PRICE ON APPLICATION

**Location:** United States

**LOA:** 31' 0" (9.45m)

**Cruise Speed:** 33.890073438 Kts. (39 MPH)

**Max Speed:** 39.10393089 Kts. (45 MPH)

Our experienced yacht broker, Andrey Shestakov, will help you choose and buy a yacht that best suits your needs **Baby Grand — JUPITER** from our catalogue. Presently, at Shestakov Yacht Sales Inc., we have a wide variety of yachts available on our sale's list. We also work in close contact with all the big yacht manufacturers from all over the world.

If you would like to buy a yacht **Baby Grand — JUPITER** or would like help answering any questions concerning purchasing, selling or chartering a yacht, please call **+1(954)274-4435**

---

# TABLE OF CONTENTS

---

TABLE OF CONTENTS	2
SPECIFICATIONS	3
Overview	3
Basic Information	3
Dimensions	3
Speed, Capacities and Weight	3
Hull and Deck Information	3
Engine Information	4
DETAILED INFORMATION	5
Introduction	5
Exterior	5
Deck Equipment	5
Electrical Equipment	5
Head	6
Cuddy Cabin & Bow	6
Helm & Electronic	6
Galley	6
Exclusions	7
Disclaimer	7
PHOTOS	8
CONTACTS	13
Contact details	13
Telephones	13
Office hours	13
Address	13

---

# SPECIFICATIONS

---

## Overview

---

This 31' Jupiter Center Console is very impressive. Powered by a pair of Yamaha 225 4 Stroke engines with only 750 hours. Very well maintained and lift kept. Here is an opportunity to experience the style, comfort and incredible ride the Jupiter has to offer.

The owner has found his next larger Jupiter and wants this one sold first!

## Basic Information

---

**Category:** Center Console

**Model Year:** 2003

**Year Built:** 2003

**Country:** United States

## Dimensions

---

**LOA:** 31' 0" (9.45m)

## Speed, Capacities and Weight

---

**Cruise Speed:** 33.890073438 Kts. (39 MPH) **Max Speed:** 39.10393089 Kts. (45 MPH)

**Displacement:** 6890 Pounds

**Water Capacity:** 60 Gallons

**Fuel Capacity:** 260 Gallons

## Hull and Deck Information

---

**Hull Material:** Fiberglass

---

## Engine Information

---

**Engines:** 2

**Manufacturer:** Yamaha

**Model:** 4 Stroke

**Engine Type:** Outboard

**Fuel Type:** Gas/Petrol

---

# DETAILED INFORMATION

---

## Introduction

---

The Jupiter 31 is a premium offshore Center Console fishing machine. It has a sharp entry that will slice thru waves with ease and a convincing blend of performance at varying speeds. The Deep-V hull incorporates a lifting pad from the stern forward.

The cuddy feature is great for that quick afternoon nap or an occasional night away. There is a table set up with telescoping pole that accepts a filler cushion for a large berth. There is a complete galley, counter space, microwave and a refrigerator. It has an oversized console with plenty of room to layout your helm and a spacious head compartment below.

The boat is rigged for fishing with a standard transom rigging station, 30 gallon livewell, wash downs, a spare 90 gallon fuel tank and rod storage.

This boat has been well maintained and upgraded.

## Exterior

---

- Hull is dark blue gel-coat
- Bottom paint in good condition
- Cushions are white and in good condition

## Deck Equipment

---

- Powder coated aluminum T-top
- Powder coated bow rails
- Bomar hatch foredeck
- 15lb Danforth anchor
- Armstrong swim ladder
- Rocket launchers
- Fish box/livewell with macerator pump
- Removable stern bench seat
- Salt and freshwater washdown
- (2) bilge pumps
- High water alarm
- Jabsco fishbox macerator

## Electrical Equipment

---

- 4" Compass
- Plexi Windshield
- Electronics, listed below:
  - Icom IC-M150 VHF
  - Furuno Radar
  - Furuno GPS
  - Furuno Depth Sounder
  - Simrad autopilot
  - Yamaha gauges

---

## Head

---

- Jabsco electric head
- 8 gallon PVC holding tank
- Y-valve with pumpout
- Sink
- Pull out shower nozzle

---

## Cuddy Cabin & Bow

---

- Table that drops down to accommodate a filler cushion
- Storage
- Clarion AM/FM – 6 CD Radio

---

## Helm & Electronic

---

- 4" Compass
- Plexi Windshield
- Electronics, listed below:
  - Icom IC-M150 VHF
  - Furuno Radar
  - Furuno GPS
  - Furuno Depth Sounder
  - Simrad autopilot
  - Yamaha gauges

---

## Galley

---

- Counter top

- Nova-cool ac/dc fridge
- Carousel Microwave

## Exclusions

---

Owner's personal belongings.

## Disclaimer

---

The Company offers the details of this vessel or yacht in good faith but cannot guarantee or warrant the accuracy of this information nor warrant the condition of the vessel. A buyer should instruct his representatives, agents, or his surveyors, to investigate such details as the buyer desires validated. This vessel or yacht is offered subject to prior sale, price change, or withdrawal without notice.

# PHOTOS

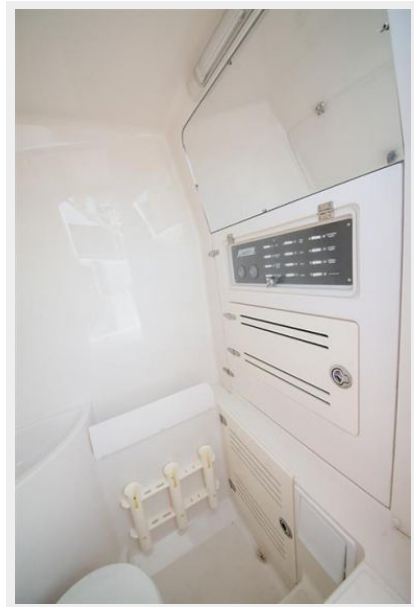














# CONTACTS

---

Andrey Shestakov, leading yacht broker of the sales department of Shestakov Yacht Sales Inc. Shestakov Yacht Sales Inc., the official representative of the Miami/Fort Lauderdale FL headquarters.

## Contact details

---

Email: [andrey@shestakovyachtsales.com](mailto:andrey@shestakovyachtsales.com)

Web: [shestakovyachtsales.com/en/](http://shestakovyachtsales.com/en/)

## Telephones

---

USA: +1(954)274-4435

## Office hours

---

Monday – Saturday: **9:00 - 21:00** EDT

Sunday: **closed**

## Address

---



Harbour Towne Marina, 850 NE 3rd St,  
STE 213, Dania, FL 33004