

UNNAMED — SPORTSMAN



Builder: SPORTSMAN

Year Built: 1984

Model: Sport Fisherman

Price: PRICE ON APPLICATION

Location: United States

LOA: 45' 0" (13.72m)

Beam: 13' 8" (4.17m)

Cruise Speed: 22 Kts. (25 MPH)

Max Speed: 27 Kts. (31 MPH)

Our experienced yacht broker, Andrey Shestakov, will help you choose and buy a yacht that best suits your needs **UnNamed — SPORTSMAN** from our catalogue. Presently, at Shestakov Yacht Sales Inc., we have a wide variety of yachts available on our sale's list. We also work in close contact with all the big yacht manufacturers from all over the world.

If you would like to buy a yacht **UnNamed — SPORTSMAN** or would like help answering any questions concerning purchasing, selling or chartering a yacht, please call **+1(954)274-4435**

TABLE OF CONTENTS

TABLE OF CONTENTS	2
SPECIFICATIONS	3
Overview	3
Basic Information	3
Dimensions	3
Speed, Capacities and Weight	3
Accommodations	3
Hull and Deck Information	3
Engine Information	4
DETAILED INFORMATION	5
Electronics	5
Inside Equipment	5
Electrical Equipment	5
Exclusions	5
Disclaimer	5
PHOTOS	6
CONTACTS	12
Contact details	12
Telephones	12
Office hours	12
Address	12

SPECIFICATIONS

Overview

Classic sportfishing convertible of the NC famed Sportsman builders. Extensive update in 2010. Call for Details.

Basic Information

Category: Sport Fisherman

Sub Category: Convertible

Model Year: 1984

Year Built: 1984

Country: United States

Fly Bridge: Yes

Dimensions

LOA: 45' 0" (13.72m)

Beam: 13' 8" (4.17m)

Speed, Capacities and Weight

Cruise Speed: 22 Kts. (25 MPH)

Max Speed: 27 Kts. (31 MPH)

Water Capacity: 60 Gallons

Fuel Capacity: 225 Gallons

Accommodations

Total Cabins: 2

Total Heads: 2

Hull and Deck Information

Hull Material: Composite

Engine Information

Engines: 2

Manufacturer: Detroit Diesel

Model: 6V92

Engine Type: Inboard

Fuel Type: Diesel

DETAILED INFORMATION

Electronics

- Furuno DD1 depthsounder
- Furuno RCU15
- Simrad AP22 autopilot
- ICOM VHF

Inside Equipment

- Electric bilge pump
- Heating
- Air conditioning
- Refrigerator
- Sea water pump
- Battery charger

Electrical Equipment

- Generator
- Shore power inlet

Exclusions

Owner's personal belongings.

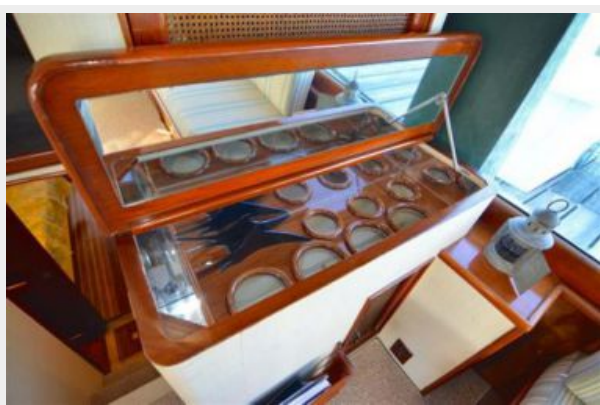
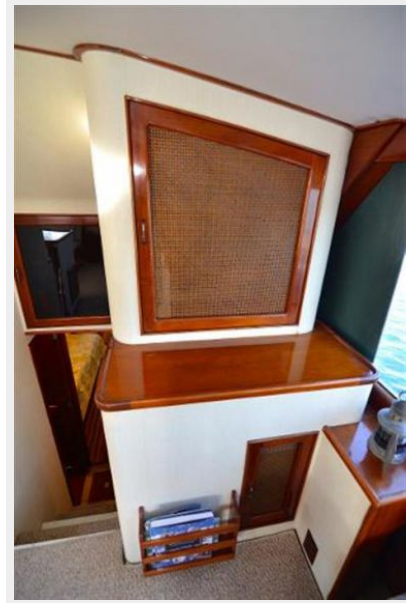
Disclaimer

The Company offers the details of this vessel or yacht in good faith but cannot guarantee or warrant the accuracy of this information nor warrant the condition of the vessel. A buyer should instruct his representatives, agents, or his surveyors, to investigate such details as the buyer desires validated. This vessel or yacht is offered subject to prior sale, price change, or withdrawal without notice.

PHOTOS













CONTACTS

Andrey Shestakov, leading yacht broker of the sales department of Shestakov Yacht Sales Inc. Shestakov Yacht Sales Inc., the official representative of the Miami/Fort Lauderdale FL headquarters.

Contact details

Email: **andrey@shestakovyachtsales.com**

Web: shestakovyachtsales.com/en/

Telephones

USA: +1(954)274-4435

Office hours

Monday – Saturday: **9:00 - 21:00** EDT

Sunday: **closed**

Address



Harbour Towne Marina, 850 NE 3rd St,
STE 213, Dania, FL 33004