

BRIO — HEESEN YACHTS



Судостроитель: HEESEN YACHTS

Год постройки: 1987

Модель: Моторная яхта

Цена: **ЦЕНА ЯХТЫ ПО ЗАПРОСУ**

Местонахождение: United States

Длина общая: 125' 0" (38.10m)

Ширина: 24' 11" (7.59m)

Мин. осадка: 8' 1" (2.46m)

Макс. осадка: 8' 1" (2.46m)

Крейс. скорость: 12 Kts. (14 MPH)

Макс. скорость: 17 Kts. (20 MPH)

Купить **BRIO — HEESEN YACHTS** а также выбрать подходящую вам яхту из нашего каталога яхт вам поможет опытный яхтенный брокер Андрей Шестаков. На сегодняшний день компания **Shestakov Yacht Sales Inc.** имеет большое количество яхт в собственном списке продаж, а также тесно сотрудничает со всеми крупными яхтенными производителями по всему миру.

Для того чтобы купить яхту **BRIO — HEESEN YACHTS** а также проконсультироваться по любому вопросу связанному с покупкой, продажей, чартером яхт позвоните по телефону **+7(918)465-66-44**.

ОГЛАВЛЕНИЕ

ОГЛАВЛЕНИЕ	2
ХАРАКТЕРИСТИКИ	4
Основная информация	4
Размеры	4
Скорость, вместимость и масса	4
Размещение	4
Корпус и палуба	5
Информация о двигателе	5
ПОДРОБНОЕ ОПИСАНИЕ	6
GENERAL OVERVIEW	6
MACHINERY	7
COMMUNICATION SYSTEMS	7
NAVIGATION SYSTEMS	7
ENTERTAINMENT SYSTEMS	8
SUNDECK	8
SKYLOUNGE	8
PILOTHOUSE	8
MAIN SALON	9
GALLEY & LAUNDRY EQUIPMENT	9
MASTER STATEROOM	9
GUEST STATEROOMS	9
CREW QUARTERS	10
TENDERS AND TOYS	10
DECK EQUIPMENT	10
SECURITY, FIRE FIGHTING AND SAFETY EQUIPMENT	10
BROKER'S COMMENTS	11
Исключения	11
Отказ от ответственности	11

ФОТОГРАФИИ	13
Jacuzzi	13
Boat Deck	13
Sundeck	13
Skylounge	13
Skylounge	13
Pilothouse	13
Dining	14
Dining	14
Galley	14
Galley	14
Master Stateroom	14
Master Bath	14
VIP Stateroom	15
Guest Stateroom	15
Twin Stateroom	15
Twin Stateroom 2	15
КОНТАКТЫ	16
Контактная информация	16
Телефоны	16
Время работы	16
Адрес	16

ХАРАКТЕРИСТИКИ

Основная информация

Тип судна: Моторная яхта	Подкатегория: Semi-Displacement
Модельный год: 2011	Год постройки: 1987
Год обновления: 2015	Страна: United States
Верх: Enclosed P.H. W/Sundeck	

Размеры

Длина общая: 125' 0" (38.10m)	Ширина: 24' 11" (7.59m)
Мин. осадка: 8' 1" (2.46m)	Макс. осадка: 8' 1" (2.46m)

Скорость, вместимость и масса

Крейс. скорость: 12 Kts. (14 MPH)	Крейсерская скорость поворота: 1250 Kts.
Дальность на крейсерской скорости: 3000	Макс. скорость: 17 Kts. (20 MPH)
	Чистый вес: 277 Pounds
Вместимость воды: 1400 Gallons	Объем топливного бака: 8136 Gallons

Размещение

Всего кают: 5	Спальные места: 12
Всего ком. состава: 7	Каюта капитана: Да
Каюты экипажа: 4	Койки экипажа: 8

Корпус и палуба

Материал корпуса: Aluminum

Материал палубы: Teak over Aluminum

Комплектация корпуса: Semi-Displacement

Дизайнер корпуса: Mulder Design

Дизайнер экстерьера: Mulder Design

Дизайнер интерьера: Art-Line Interiors

Информация о двигателе

Двигатели: 2

Производитель: Deutz

Модель: TBD 616V16

Тип топлива: Diesel

ПОДРОБНОЕ ОПИСАНИЕ

GENERAL OVERVIEW

BRIO has emerged a new yacht with a complete rebuild in 2011 and a significant refit in 2015 which included successful completion of the ABS Five Year Special Survey. This superb 38m super yacht started life as a Heesen designed by Frank Mulder and launched in 1987 as *Tropic C*. The elegant build has the proven structural integrity synonymous with her pedigree.

In 2009, the previous owner acquired the boat and took her to Croatia and Italy to be completely rebuilt. The rebuild was completed in 2011. An amount approaching 10 million US dollars has been spent to bring the yacht up to its present standard. The rebuild included the decks being extended and the interior being gutted and completely renewed. The engines and generators have also since been overhauled. Mechanical upgrades in tandem with lightweight aluminum construction result in excellent speed with greater fuel efficiency and a 3,000nm range. The square bilge profile accommodates an unusually shallow draft for anchoring in areas off limits to yachts of similar size.

European inspired, chic interiors feature rich wood paneling and cabinetry, creamy white furnishings and carpeting, and bold red accent pieces that lend energy to elegance.

High-tech materials and matte finishes are designed for durability and easy maintenance. Five en suite staterooms luxuriously accommodate 12 guests. The stylish main salon with modular furnishing can be arranged to suit a range of social requirements. The comfortable skylounge, with magnificent views, has a dedicated office area and entertainment center, unparalleled for casual, indoor relaxation.

BRIO boasts voluminous spaces for superb outdoor living. The aft extension on the main deck features built-in dining for 12 guests. Gracious spiral stairways to port and starboard descend to the generous swim platform. The expanded bridge deck provides crane and tender storage. The new sundeck with elegant teak sole, has banquette seating forward with a raised observation bench at center that adjusts to fore or aft viewing positions. Centered under protective shade, the fully-equipped U-shape bar seats six guests. The large Jacuzzi is flanked by thickly cushioned sun loungers. For water sports pleasure, the yacht is equipped with the most sought after gear and toys.

Do not miss the opportunity to own this fine pedigree Dutch yacht in excellent condition.

MACHINERY

- (2) Deutz TBD 616V16 diesels @ 1250 hp each
- Reintjes WVS832 2.52:1 gear boxes for main engines
- (2) 65 kW Northern Lights generators (Port; 3,673 hrs since rebuild 2011. Stbd: 5,173 hrs since rebuild 2011)
- 208V/60 Hz output
- 4.8 gal/hr/ 18.2 liters/hr generator fuel consumption
- 20,000 BTU air conditioning
- ARMA watermakers - 2,245 US gallons
- (2) Naiad Datum stabilizers
- Naiad bow thruster
- Electro-Hydraulic steering system
- Westfalia Centerfuge fuel separator & filtration & Racor filters
- (2) 110V Staingray fresh water system

COMMUNICATION SYSTEMS

- Nera F77 satellite phone
- KVH Mimi M satellite phone
- Panasonic Hybrid telephone system with 14 stations
- (2) Icom fixed VHF
- Off ships phone system intercome

NAVIGATION SYSTEMS

- (2) Furuno radars
- (1) Sperry Marine Gyrocompass
- Sestrel 6" Magnetic Compass
- Simrad Satellite HS-52 compass
- (1) Simrad Auto pilot
- (1) Furuno AIS
- (1) Furuno Depth sounder
- (1) Furuno GPS
- In Ship's Office computer with printer
- NobelTec on Furuno NavNet and ship's monitor plotter
- B&G Hydra 2000 Wind/Speed Log
- Furuno NX-700 Navtex
- Simon/Palladium Technologies integrated monitoring
- Kobelt Control System (2013)

ENTERTAINMENT SYSTEMS

- Apple TV (Skylounge)
- 55" Sony Bravia flat screen (Skylounge)
- Apple TV (Guest Staterooms)
- Sony Bravia flat screens (Guest Staterooms)
- Apple TV (Crew Mess)
- Bravia flat screen (Crew Mess)
- Bose Life Style III theatre entertainment system (Skylounge)
- Sony DVD player (Guest Staterooms)
- Sony DVD player (Crew Mess)
- Sony Bravia CCTV repeater
- Bose Freespace amplifiers with Apple Airport Express receivers (Salon)
- Bose 151 speakers (Salon)
- Fusion Outdoor audio system with Bose speakers and Apple Airport Express receiver (Sundeck)

SUNDECK

The Sundeck is designed for entertaining and provides sun or shade. Forward, a wrap-around banquette provides comfortable seating with spectacular views. In the center, a raised dual seat adjusts to face forward or aft. The well-equipped bar, under protective shade, has plenty of counter space, six bar stools, fridge and grill. Aft, there is an array of plus sun pads that flank the elevated, large spa pool.

SKYLOUNGE

On the Bridge deck, the bright and cheerful Skylounge is intelligently designed to double as an office and lounging area. Desk space for two is separated by counter height cabinets from the welcoming lounge area and entertainment center. Forward, the helm is equipped with innovative navigation technologies. The spacious Captain's cabin is located on the port side adjacent to the helm.

PILOTHOUSE

Navigation instruments, monitoring software and integrated technologies provide unsurpassed operational intelligence, safety and security.

MAIN SALON

Designed for flexibility, the salon can be configured to accommodate a lengthy guest list or an intimate celebration, with cocktails and coffee from the fully equipped service bar. Modern, contemporary décor in a soothing color palette is the ideal backdrop to compliment any theme.

Breville Barista Express coffee maker Vitrifigo IM-CLP Hydro automated ice maker

Whynter Dual Zone 32 bottle wine refrigerator Electrolux EI24BC65GS beverage refrigerator

GALLEY & LAUNDRY EQUIPMENT

- Electrolux 30" Double Wall oven w/Wave-Touch controls (Galley)
- Electrolux Icon 5-burner electric cooktop (Galley)
- Electrolux microwave (Galley)
- T35 True reach-in refrigerator (Galley)
- Under counter built-in freezer (Galley)
- Insinger Commercial dishwasher (Galley)
- Microwave (Crew Mess)
- Full size freidge/freezer (Crew Mess)
- True refrigerator and True freezer (Control room)
- Whynter Dual Zoen 32 bottle wine fridge (Salon)
- Electrolux beverage fridge (Salon)
- Breville Barista Express coffeemaker (Salon)
- Vitrifigo Hydro automated icemaker (Salon)
- (2) Miele Professional washers
- (2) Miele Professional dryers
- (1) Rowenta pressure iron & steamer

MASTER STATEROOM

The luxurious, main deck master suite is outfitted with king bed, comfortable lounging area to port and office to starboard. Storage is plentiful in handcrafted drawers, cabinets and closet. The master bedroom features dual, sculpted granite sinks, floor-to-ceiling glassed- in shower, bathtub with handheld shower fixture, and toilet and bidet enclosure.

GUEST STATEROOMS

Guest accommodations positioned on the lower deck include a king bed VIP suite with lounging sofa and desk, king bed guest stateroom, and two twin staterooms with Pullmans.

CREW QUARTERS

Spacious en-suite cabins and dedicated lounge create a cozy environment with the comforts of home, allowing the crew pleasant relaxation when not on duty.

(3) Twin cabins with en-suite head and shower.

Crew lounge.

Captain's double cabin on the bridge deck.

TENDERS AND TOYS

- (1) 17' Nautica Wide Body w/Yamaha 115 hp (250 hrs - 4/6/2015)
- (1) 15' Novurania 430 DL w/Honda 50 hp (100 hrs - 4/6/2015)
- Snorkel gear
- O'Brien Hyperlite A Wing wakeboard
- Helix Xtra Super shaped combos water skis
- Viper vase knee board
- Mistral Shredder windsurfer, board only

DECK EQUIPMENT

- Steen dual horizontal gypsy anchor windlass system with capstans
- (2) Stockless Navy anchors
- 1/2" anchor chain
- Sangiunetti Chiavari 4400 lb. davit
- Besenzoni Passerelle
- Integral to the hull swim platform

SECURITY, FIRE FIGHTING AND SAFETY EQUIPMENT

- Custom CCTV System

- (4) Cameras
- Wheelhouse monitor

- Fire Control System 208V fire/bilge pump
- 110V fire/bilge pump
- 24V fire/bilge pump
- (2) Fire fighting suits
- (2) Breathing apparatus
- (5) Fire hydrants
- (2) 10m hose
- (2) 20m hose
- Honda 4.5 hp crash pump with hose
- Handheld fire extinguishers throughout
- (2) CO2
- Simon/Palladium Technologies integrated monitoring alarms
- (2) EEBD

- Safety Equipment
- (3) 20-person life rafts
- (25) life jackets
- (2) SOLAS inflatable life jackets
- (2) ACR GMDSS portable radios
- (20) Ascotherm Mk IV TPA (Thermal Protective Aids)
- (1) EPIRBS
- (20) Flares
- First Aid Supply Kit

BROKER'S COMMENTS

Great opportunity to own a 5 stateroom, 12 guests, tri-deck Dutch pedigree yacht in excellent condition.

Исключения

При продаже яхты исключаются личные вещи владельца.

Отказ от ответственности

Компания предоставляет описание судна или яхты добросовестно, но не может гарантировать точность этой информации, а также не ручается за техническое состояние. Покупатель должен проинструктировать своих агентов или оценщиков исследовать представленную информацию более подробно, по собственному желанию.

Продажа судна или яхты, изменение цены или снятие с продажи будет происходить без предварительного уведомления.

ФОТОГРАФИИ

Jacuzzi



Boat Deck



Sundeck



Skylounge



Skylounge



Pilothouse



Dining



Dining



Galley



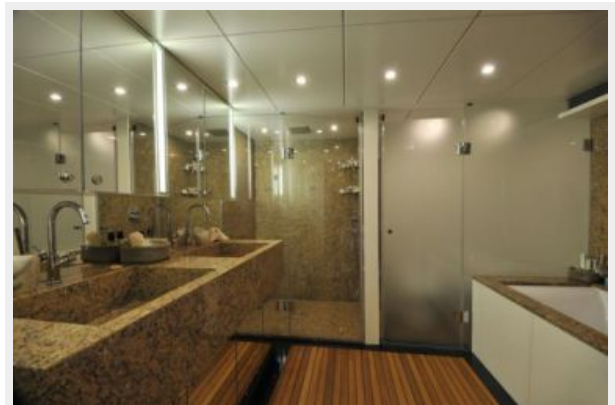
Galley



Master Stateroom



Master Bath



VIP Stateroom



Guest Stateroom



Twin Stateroom



Twin Stateroom 2



КОНТАКТЫ

Андрей Шестаков (Andrey Shestakov) – ведущий яхтенный брокер отдела продаж яхт и судов компании Shestakov Yacht Sales Inc. Официальный представитель Shestakov Yacht Sales Inc. для русскоговорящих клиентов в центральном офисе компании в Майами/Форт Лодердейл/Флорида/США.

Контактная информация

Email: andrey@shestakovyachtsales.com

Web: shestakovyachtsales.com

Телефоны

Краснодарский край: **+7(918)465-66-44**

США, Майами, Флорида: **+1(954)274-4435**

Время работы

Понедельник – Суббота: **9:00 - 21:00**
EDT

Воскресенье: **Закрето**

Адрес



Harbour Towne Marina, 850 NE 3rd St,
STE 213, Dania, FL 33004