

SEA COTTAGE — BURGER



Builder: BURGER

Year Built: 1998

Model: Motor Yacht

Price: PRICE ON APPLICATION

Location: United States

LOA: 102' 0" (31.09m)

Beam: 22' 0" (6.71m)

Max Draft: 5' 6" (1.68m)

Cruise Speed: 18 Kts. (21 MPH)

Max Speed: 21 Kts. (24 MPH)

Our experienced yacht broker, Andrey Shestakov, will help you choose and buy a yacht that best suits your needs **SEA COTTAGE — BURGER** from our catalogue. Presently, at Shestakov Yacht Sales Inc., we have a wide variety of yachts available on our sale's list. We also work in close contact with all the big yacht manufacturers from all over the world.

If you would like to buy a yacht **SEA COTTAGE — BURGER** or would like help answering any questions concerning purchasing, selling or chartering a yacht, please call **+1(954)274-4435**

TABLE OF CONTENTS

TABLE OF CONTENTS	2
SPECIFICATIONS	5
Overview	5
Basic Information	5
Dimensions	5
Speed, Capacities and Weight	6
Accommodations	6
Hull and Deck Information	6
Engine Information	6
DETAILED INFORMATION	7
Vessel Walkthrough	7
Lower Deck	7
Flybridge Deck	8
Engine Room	8
Mechanical Equipment	8
Communications and Navigation Systems	8
Entertainment Equipment	9
Main Galley	9
Crew Galley / Mess	10
Laundry Room	10
Deck Equipment	10
Safety & Fire Equipment	11
Upgrades	11
Remarks	12
Exclusions	12
Exclusions	13
Disclaimer	13
PHOTOS	14

Flybridge	14
Flybridge	14
Aft Deck	14
Aft Deck	14
Salon	14
Salon	14
Dining	15
Dining	15
Dining / Accent	15
Dining / Accent	15
Galley	15
Galley / Dinette	15
Day Head	16
Main Deck / Hallway	16
Master Stateroom	16
Master Stateroom	16
Master Stateroom	16
Master Stateroom	16
Master Bath / His	17
Master Bath / Hers	17
Guest Foyer	17
Guest Foyer	17
VIP Stateroom / Queen	17
VIP Queen Stateroom / Head	17
VIP Stateroom / Twin	18
VIP Twin Stateroom / Head	18
Pilothouse / Helm	18
Pilothouse / Settee	18
Engine Room	18

Engine Room	18
Engine Room	19
Engine Room	19
CONTACTS	20
Contact details	20
Telephones	20
Office hours	20
Address	20

SPECIFICATIONS

Overview

The Burger Yacht is a true "Yachtsman's Yacht", and known worldwide for their highest build quality and great sea-keeping ability. The Burger yard has produced the finest in pleasure motor yachts from their Wisconsin Shipyard dating back to 1901 beginning with "Vernon Jr", an 85' Cruiser. Burger Boat Company was formed under the direction of Henry E. Burger in 1959 and ever since has been focused on design and construction of the highest quality Aluminum hull yachts.

Burger Boat Company has won countless marine industry awards over the decades, setting many standards replicated in yacht construction around the globe today. Burger buyers typically are not first-time ventures, but are experienced yachtsmen unwilling to sacrifice on the quality of engineering, fit, finish, and sea keeping ability. "Sea Cottage" has been maintained to the highest standards by a true yachting couple. Presently berthed at her Palm Beach, FL home on the Peruvian Town Dock, she is a true pleasure to show. The level of care and maintenance is evident upon inspection and "Sea Cottage" has only become available due to her owners change in plans. This is a rare opportunity to acquire one of America's iconic builds at a fraction of new construction replacement cost. The marina slip lease can be available for assumption by the new owners, if interested.

Basic Information

Category: Motor Yacht

Sub Category: Raised Pilothouse

Model Year: 1998

Year Built: 1998

Country: United States

Fly Bridge: Yes

Dimensions

LOA: 102' 0" (31.09m)

Beam: 22' 0" (6.71m)

Max Draft: 5' 6" (1.68m)

Speed, Capacities and Weight

Cruise Speed: 18 Kts. (21 MPH)

Cruise Speed RPM: 2050 Kts.

Max Speed: 21 Kts. (24 MPH)

Max Speed RPM: 2250 Kts.

Water Capacity: 1000 Gallons

Holding Tank: 800 Gallons

Accommodations

Total Cabins: 3

Sleeps: 6

Total Heads: 4

Crew Cabin: 2

Crew Berths: 3

Hull and Deck Information

Hull Material: Aluminum

Engine Information

Engines: 2

Manufacturer: Caterpillar

Model: 3412

Engine Type: Inboard

Fuel Type: Diesel

DETAILED INFORMATION

Vessel Walkthrough

"Sea Cottage" was created in her owners' vision to have the perfect Beach House they could enjoy anywhere. During her refit great effort was put into achieving the perfect flow and feel, both inside and out. Whether cruising or at the dock, "Sea Cottage is an absolute pleasure to both live and entertain aboard. Beginning Aft: The aft deck has two chairs with ottomans, a teak table with aft bench seat and three chairs, and is covered by a canvas awning and ideal for outdoor entertaining. A manual Passerelle is located on the port side, and stairs on the starboard side lead down to the swim platform and engine room transom entrance. The interior décor was completely updated with a rearranged salon opened up for better flow, new overhead panels, new cabinet for concealed flat panel TV behind the Starboard sofa, and warm teak sole throughout. The soft goods were completely updated and the lighter fabrics contrast perfectly with the rich wood finishes. The Salon has large windows and full glass panel bulkhead to the aft deck giving this area an open airy feel. The forward bulkhead features a wet bar and new refrigerator which can be hidden by closing the antique mirrored folding doors. The dining table is just aft of the wet bar and comfortably seats 8. Portside from forward is as follows: portside entrance door; serving buffet table; sofa with two facing chairs and end tables. Starboard side from forward is desk, end table, sofa, and additional end table. The main deck hallway runs forward past 4 steps up to a raised pilothouse which has a bench seat and teak table. Aft of the pilot house on the starboard side is a side entrance door, and to port is the day head and entrance to the underside storage area. The day head features new cabinetry and furnishings. The country kitchen is all the way forward on the main deck. Seating is an "L" shaped bench seat with teak table. The galley features granite countertops and stainless steel appliances. A center island houses the subzero produce refrigerators and compactor. The galley sink counter is "L" shaped with the sink facing out the port window.

Lower Deck

The master stateroom and amidship guest quarters on the lower deck are accessed by a stairway forward of the salon. The master is forward and features a king bed and his & hers bath. The master stateroom cabinetry has been replaced including a built-in desk. A two-way mirror above the desk cleverly disguises the new 46" HD TV equipped with surround sound technology. The forward bulkhead has spacious hanging closets. The port VIP guest cabin features a queen bed with private en-suite. The starboard guest cabin has twin beds with private en-suite. Both cabins have been outfitted with new 22" HD TV's. Crew: A stairway from the main galley companionway leads down to the crew quarters at the forward end of the lower deck. The V-berth has a queen bed, two side hanging lockers and a private head with shower. The portside crew cabin has bunk beds and a private head with shower. The crew lounge has a teak table and small bench seat. The aft bulkhead has a new washer/dryer.

Flybridge Deck

The forward Flybridge is covered with a new Eisenglass enclosed hardtop. A Helmsman bench seat is backed by a wet bar counter with refrigerator. Both sides of the deck have cushioned bench seats that run aft. The port side has a table with two chairs and aft of that is a serving bar and refrigerator on port side, and electric grill and new icemaker on starboard side. Further aft is the tender and life raft on the port side, and davit and hatch down on the starboard side.

Engine Room

Located in the aft section of the lower deck is the engine room which is accessed from the transom or from a hatch in the aft main deck.

Mechanical Equipment

- Engine Type: Twin CAT 3412, 1350hp, Port: 4016 hrs Stbd: 4027 hrs SMOH (as of 3/2015)
- Gearboxes: ZF v drives
- Generators: (2) Kilopak, Fwd 45 kW @ 5430 hrs., Aft 40 kW @ 5020 hrs.(as of March 15)
- Shore Power: Atlas system converter
- (2) Single phase / 100amp / 240 volt or (1) three phase/ 100amp / 208volt
- Batteries: 12V and 24V Deka gel cell
- Marine Air - Air Conditioning
- Matrix 3600 Watermaker
- Bow Thruster: Hydraulic, 50hp
- Steering System: Vickers, hydraulic
- Naiad Stabilizer System
- Alpha Laval fuel centrifuge
- Racor Primary fuel filtration
- Oberdorfer macerator
- Fire/Bilge Pump: Jabsco Engine driven; Jabsco 110V; rule 12V bilge pumps
- Owner reports all mechanical services to be current

Communications and Navigation Systems

Communication Systems:

- Mini VSAT: Intellian V60 KU-Bank (New 2013)
- SATcom: KVH7 V-Sat (New 2013)
- Network & Wireless: RUCKUS ZONEFLEX 7025 multiservice system (New 2013)
- Telephone System: Panasonic KX-TDA50G includes 6 fixed units and 3 portable units (New 2013)

- VHF: SEA 156, Icom M602
- (2) Onboard Cameras; Aft Deck and Engine Room
- All communication systems have been completely upgraded including new hardware
- HD TV Direct TV Satellite (New 2013) - capable of utilizing 8 HD receivers

Navigation Systems:

- Display: Hatteland 17" Series X display (New 2013)
- Radar: Furuno x 2 -Primary system FAR2117 BB Radar w/ trackball keypad -(New 2013)
- Gyrocompass: Furuno SC 30 Satellite compass
- Magnetic Compass: Danforth Constellation x 2
- Automatic Pilot: C-Plath Navpilot V
- GPS: Northstar 952X; Furuno black box
- Navigation Instruments: AIS, Furuno Navtex receiver; Furuno NavNet TZ Touch 3D; Nobel Tec Chart Plotter (New 2013)

Entertainment Equipment

Main Salon:

- Video: Samsung 50" LED HD TV; Blu-Ray 3D player with built in Wi-Fi (New 2013)
- Audio: Denon surround sound receiver - dedicated salon stereo system (New 2013)
- Control: Apple 16GB Wi-Fi iPad (New 2013)

Galley:

- Video: LG 22" LED HDTV (New 2013)

Master Stateroom:

- Video: Samsung 46" LCD HDTV (New 2013)
- Audio: Marantz NR1403 audio/video receiver (New 2013)
- Control: Apple 16GB Wi-Fi iPad (New 2013)

Guest Staterooms:

- Video: (2) LG 22" LED HDTV (New 2013)

Crew:

- Video: (3) LG 22" LED HDTV (New 2013) (crew mess, crew cabins)

Main Galley

- Dacor 4- burner glass-top stove

- (2) Dacor convection/conventional ovens
- GE Convection/microwave oven
- GE Profile refrigeration & freezer
- (2) Sub-zero produce refrigerators
- Miele dishwasher
- U-Line Icemaker
- Kitchen Aid waste disposal
- Broan Trash Compactor

Other:

- Salon refrigerator (New)
- Flybridge freezer/refrigerator/ and icemaker (New)
- Electric grill on Flybridge

Crew Galley / Mess

- Under counter refrigerator
- Coffee maker

Laundry Room

Equipment:

- Bosch HE washers (New 2013)
- Bosch HE dryers (New 2013)

Deck Equipment

Tender: 16' Novurania / 4-stroke Yamaha 90hp outboard

Anchor Windlass System: (2) Maxwell hydraulic

Capstans: (2) Maxwell 3500 electric

Anchors: (2) 150lb. steel fluke

Anchor Chain: 300'

Boat Crane and Davits: Nautical Structures EZD 2500 hydraulic deck crane

Passerelle: Optional

Boarding Ladders: 7-Step MarQuipt tide rider; S/S side boarding ladder

Swimming Platform: Hull structure with teak deck; S/S rails and swim ladder; shower hose

Flybridge: Barbeque; refrigerator; ice maker & sink

Safety & Fire Equipment

Security Equipment:

- CCTV System: Pilothouse monitor
- Cameras: Aft Deck and Engine Room
- Fire-Fighting equipment
- Engine CO2 fire suppression; 12 hand-held fire extinguishers

Safety Equipment:

- Life Rafts: 10-Person Solace life raft (New March 2015)
- Life Jackets: (26) adult; (5) children
- Searchlights: ACR 150 W Zenon searchlight on mast
- Medical Equipment: Extensive medical kit; automatic defibrillator

Upgrades

Partial List of Upgrades & Service Completed in 2013:

- Propeller's serviced / prop speed applied
- New interior décor including all soft goods, new teak flooring in main salon, new cabinets in master stateroom
- New Day Head cabinet and furnishings
- New cabinet in main salon to house "pop up" television
- Extensive new navigation, electronics, lighting and AV systems throughout
- Main engines and generators serviced
- Running gear was serviced
- Fresh water tank re-coated
- Bottom was blasted and re-coated
- Hull was fully primed and painted (Awl-Grip Carinthia Blue)
- New stainless steel staple rails on the transom

- New underwater lights (2) under the transom
- Mast/Navigation upgrades
- New granite counter top on bridge wet bar
- New main engine exhaust mixers and blankets
- All guest and crew accommodations have new audio / visual equipment including dedicated satellite receivers

Remarks

"Sea Cottage" has been maintained to the highest standards by a true yachting couple. Presently berthed at her Palm Beach, FL home on the Peruvian Town Dock, she is a true pleasure to show.

The level of care and maintenance is evident upon inspection and "Sea Cottage" has only become available due to her owners change in plans. This is a rare opportunity to acquire one of America's iconic builds at a fraction of new construction replacement cost.

The marina slip lease can be available for assumption by the new owners, if interested.

Exclusions

"Sea Cottage" is a registered name and does not convey

- All artwork
- Dishes
- Flatware
- Glassware
- Table linens (placemats, napkins, napkin ring holders & beverage napkins)
- (2) mahogany round tables from Cameroon currently sitting in front of the sofas
- (1) High-gloss blue chest of drawers with marble top
- (2) Ceramic dolphin candlestick holders turned into table lamps in master suite
- (1) Antique silver mussel shell round mirror
- (1) American flag pillow, (1) you are my sunshine pillow and (4) hand-crocheted guest room pillows
- New York Yacht Club Burgee
- Palm Beach Yacht Club Burgee
- Fleece blankets
- All monogrammed items

A detailed list will be provided at the time of sale, and all parties shall concur in writing prior to vessel acceptance.

Exclusions

Owner's personal belongings.

Disclaimer

The Company offers the details of this vessel or yacht in good faith but cannot guarantee or warrant the accuracy of this information nor warrant the condition of the vessel. A buyer should instruct his representatives, agents, or his surveyors, to investigate such details as the buyer desires validated. This vessel or yacht is offered subject to prior sale, price change, or withdrawal without notice.

PHOTOS

Flybridge



Flybridge



Aft Deck



Aft Deck



Salon



Salon



Dining



Dining



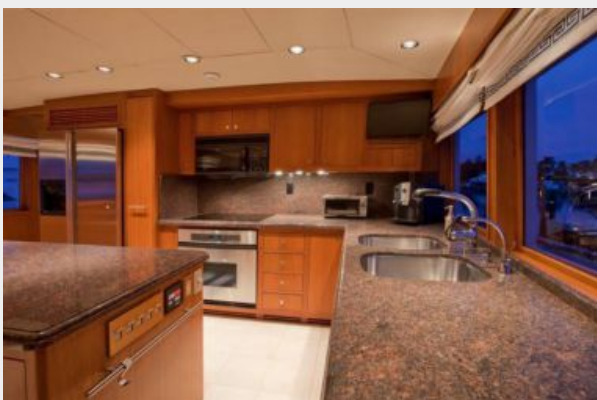
Dining / Accent



Dining / Accent



Galley



Galley / Dinette



Day Head



Main Deck / Hallway



Master Stateroom



Master Stateroom



Master Stateroom



Master Stateroom



Master Bath / Hers



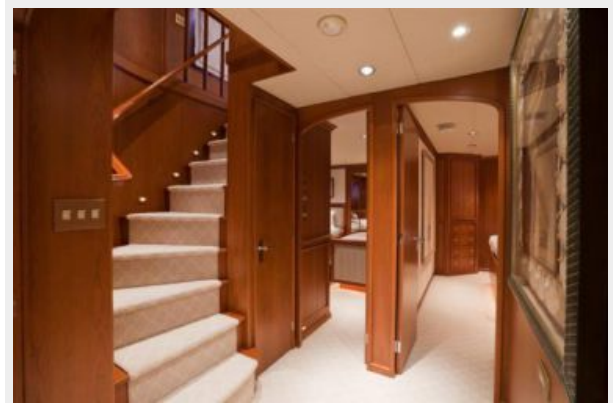
Master Bath / His



Guest Foyer



Guest Foyer



VIP Stateroom / Queen



VIP Queen Stateroom / Head



VIP Stateroom / Twin



VIP Twin Stateroom / Head



Pilothouse / Helm



Pilothouse / Settee



Engine Room



Engine Room



Engine Room



Engine Room



CONTACTS

Andrey Shestakov, leading yacht broker of the sales department of Shestakov Yacht Sales Inc. Shestakov Yacht Sales Inc., the official representative of the Miami/Fort Lauderdale FL headquarters.

Contact details

Email: andrey@shestakovyachtsales.com

Web: shestakovyachtsales.com/en/

Telephones

USA: +1(954)274-4435

Office hours

Monday – Saturday: **9:00 - 21:00** EDT

Sunday: **closed**

Address



Harbour Towne Marina, 850 NE 3rd St,
STE 213, Dania, FL 33004