

## HOOK 'EM — INTREPID



**Builder:** INTREPID

**Year Built:** 2008

**Model:** Sport Fisherman

**Price:** PRICE ON APPLICATION

**Location:** British Virgin Islands

**LOA:** 39' 0" (11.89m)

**Beam:** 12' 0" (3.66m)

**Cruise Speed:** 35 Kts. (40 MPH)

**Max Speed:** 50 Kts. (58 MPH)

Our experienced yacht broker, Andrey Shestakov, will help you choose and buy a yacht that best suits your needs **Hook 'em — INTREPID** from our catalogue. Presently, at Shestakov Yacht Sales Inc., we have a wide variety of yachts available on our sale's list. We also work in close contact with all the big yacht manufacturers from all over the world.

If you would like to buy a yacht **Hook 'em — INTREPID** or would like help answering any questions concerning purchasing, selling or chartering a yacht, please call **+1(954)274-4435**

# TABLE OF CONTENTS

TABLE OF CONTENTS	2
SPECIFICATIONS	4
Overview	4
Basic Information	4
Dimensions	4
Speed, Capacities and Weight	4
Accommodations	4
Hull and Deck Information	4
Engine Information	5
DETAILED INFORMATION	6
Overview	6
Accommodations	6
Helm	6
Electronics	7
Cockpit and Deck	7
Mechanical & Electrical	7
Exclusions	8
Disclaimer	8
PHOTOS	9
Profile 2	9
Aft View	9
Tender	9
Profile 3	9
Triple Yamaha 350 4-Stroke	9
Triple Yamaha 350 4-Stroke	9
Cockpit	10
Forward Deck	10
Forward Deck	10

Overall	10
Helm	10
Switches/Helm	10
Forward Seating	11
Helm	11
Forward Seating	11
Looking Aft	11
Dive Door	11
Dive Door Down	11
Entering Cabin	12
Entering Cabin	12
Sofa	12
Sofa	12
Head	13
Galley	13
Head/Stand-Up Shower	13
Water maker	13
Water maker	14
CONTACTS	15
Contact details	15
Telephones	15
Office hours	15
Address	15

---

# SPECIFICATIONS

---

## Overview

---

Will be relocated to Florida via freighter mid May 2015

## Basic Information

---

**Category:** Sport Fisherman

**Sub Category:** Center Console

**Model Year:** 2008

**Year Built:** 2008

**Country:** British Virgin Islands

## Dimensions

---

**LOA:** 39' 0" (11.89m)

**Beam:** 12' 0" (3.66m)

## Speed, Capacities and Weight

---

**Cruise Speed:** 35 Kts. (40 MPH)

**Max Speed:** 50 Kts. (58 MPH)

**Water Capacity:** 60 Gallons

**Holding Tank:** 20 Gallons

**Fuel Capacity:** 400 Gallons

## Accommodations

---

**Total Cabins:** 1

**Sleeps:** 4

**Total Heads:** 1

## Hull and Deck Information

---

**Hull Material:** Fiberglass

---

## Engine Information

---

**Engines:** 3

**Manufacturer:** Yamaha

**Model:** 350 4 Stroke

**Engine Type:** Outboard

**Fuel Type:** Gas/Petrol

---

# DETAILED INFORMATION

---

## Overview

---

The Intrepid 390 will out-run just about anything on the water, while offering the comfort, features and accommodations of a sport-yacht. There is ample seating for family or friends to enjoy the exhilarating, yet amazingly smooth, dry ride. The fiberglass hard top and stratoglass enclosure provides crystal clear views and excellent wind protection. Upon arrival of your destination, water sports enthusiasts will appreciate the convenience of the "hull side dive door" featuring an integral swim ladder for easy water access and a warm cockpit shower. For fishing, the cockpit bench seat can be removed; she then becomes a high performance fishing machine that will have you catching fish long before anyone else arrives. Below deck, she's a comfortable over-nighter with plenty of headroom, a convertible settee, queen bed, full galley and head, plus extra amenities like satellite TV, reverse cycle air/heat, electric head and separate stall shower. Intrepid Powerboats has been building high-end, high performance yachts out of Largo, FL. They are an industry leader in solid construction, innovative design, distinctive styling, and cutting edge engineering. Intrepid pioneered fabrication techniques utilizing wood-free vacuum-bag lamination, traverse-stepped hulls, and an array of yacht-class creature comforts to produce the ultimate line of semi-custom sport boats. She is in stunning condition and has only 400 hours logged on her triple 350 hp Yamaha outboards.

## Accommodations

---

The SALON features a large settee to port which converts to a berth. There is recessed halogen lighting, reverse-cycle air/heat and cherry wood veneer cabinetry and 4 rod holders. As part of the owner's impeccable maintenance, a dehumidifier is always running on board when the boat is not in use. The FORWARD BERTH is roughly queen sized and features hull side windows with curtains, decorator bedspread and pillows. There is a flat-screen TV which is connected to a satellite antenna system. There are 3 drawers under a hanging locker to port. There is an overhead hatch plus air conditioning and recessed lighting. The HEAD has an amazing 6'3" of headroom and includes a separate stall shower, sink and vanity with an electric Raritan head, Corian counter top, cherry and fiberglass cabinets with an opening port light. The GALLEY is secure for travelling at high speeds. The custom refrigerator is the built-in drawer type. Drawers are stainless steel inside. Hideaway sink is concealed when not in use. Single-burner cook top and microwave oven.

## Helm

---

The HELM features a motorized dash-panel for electronics that lowers away when not in use. Visibility is excellent and controls are simple and easy to reach. A bow thruster makes maneuvering in tight quarters easy. The fiberglass hards top and new, low distortion stratoglass enclosure provide protection while maximizing the view. Guests relax in the salon-like

atmosphere with wrap-around lounge seating, removable cocktail table and a built-in drink cooler and 2 stainless steel cup holders. The starboard settee features an electric backrest/headrest. Seating and upholstery is comfortable but highly durable, and is protected with full canvas. Storage areas under seating.

---

## Electronics

---

Garmin 15" full color touch screen GPS chart plotter & 48 mi. radar Simrad AP 28 Autopilot Bow thruster control ICOM M-504 VHF radio Clarion stereo with iPod dock 6 JL Audio speakers & 2 sub woofers Searchlight control Triple engine instrumentation Air horn Trim tab controls Anchor windlass control Courtesy lights GOST Security System

---

## Cockpit and Deck

---

The exterior is sleek, clean and intelligently laid out with useful features, including recessed pop-up cleats, ample handrails, recessed fire extinguisher, recessed deck fittings, recessed anchor windlass and steps where you need them. The large aft deck provides ample room for entertaining. Removable tables (one behind helm, one in cockpit) and the bench seat convert her to a high-performance sportfishing machine. The hullside dive door provides the ultimate convenience for scuba diving. Additional features include:

- 5 Rocket launchers
- 4 gunwale rod holders
- Cockpit coaming pads
- Oversize painted bow rail
- Lofrans electric anchor windlass
- Oversized Delta 35# plow anchor
- Standard Chrome plated Delta anchor - Mounted in lazarette as spare
- Large fish box with macerator/drain
- Cockpit raw water washdown
- Dockside water connection
- Hot/cold cockpit shower
- Mini halogen spreader lights
- Full custom canvas cover (from bow to aft (covering engines also) for dry dock storage
- Life raft valise
- EPIRB
- Ditch bag

---

## Mechanical & Electrical

---

Triple 350 hp 4-Stroke Yamaha's - 400 hrs. 5KW Kohler genset with soundshield - 114 hrs. Holding tank and macerator pump 12V and 110V systems 12V, 110V Inverter Hot water heater

---

TracVision Satellite TV antenna system Spectra Ventura 150 MPC Watermaker 12V (with designated battery) - Oct. 2012 Batteries 2013/2014 Battery charger replaced 2014 Engine freshwater flush manifold Engine locks "DOC-N-LOC"

## Exclusions

---

Owner's personal belongings.

## Disclaimer

---

The Company offers the details of this vessel or yacht in good faith but cannot guarantee or warrant the accuracy of this information nor warrant the condition of the vessel. A buyer should instruct his representatives, agents, or his surveyors, to investigate such details as the buyer desires validated. This vessel or yacht is offered subject to prior sale, price change, or withdrawal without notice.



# PHOTOS

**Profile 2**



**Aft View**



**Tender**



**Profile 3**



**Triple Yamaha 350 4-Stroke**



**Triple Yamaha 350 4-Stroke**



**Cockpit**



**Forward Deck**



**Forward Deck**



**Overall**



**Helm**



**Switches/Helm**





**Helm**



**Forward Seating**



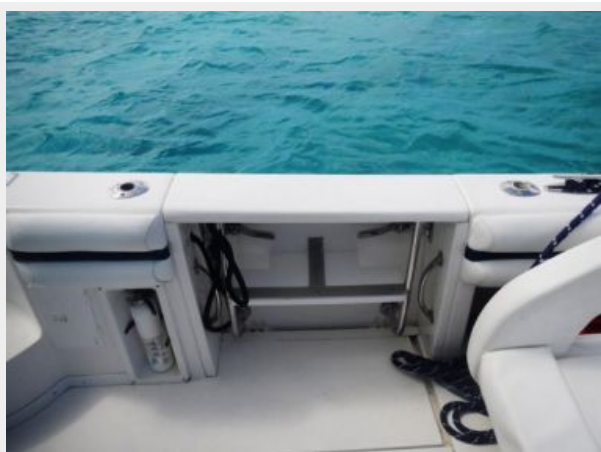
**Forward Seating**



**Looking Aft**



**Dive Door**



**Dive Door Down**



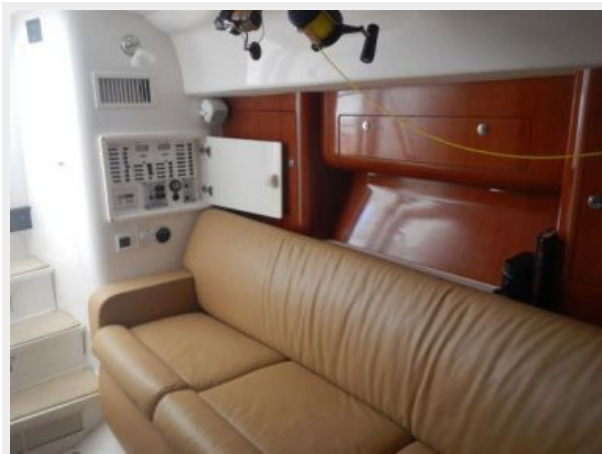
**Entering Cabin**



**Entering Cabin**



**Sofa**



**Sofa**



**Galley**



**Head**



**Head/Stand-Up Shower**



**Water maker**



## Water maker



---

# CONTACTS

---

Andrey Shestakov, leading yacht broker of the sales department of Shestakov Yacht Sales Inc. Shestakov Yacht Sales Inc., the official representative of the Miami/Fort Lauderdale FL headquarters.

---

## Contact details

---

Email: [andrey@shestakovyachtsales.com](mailto:andrey@shestakovyachtsales.com)

Web: [shestakovyachtsales.com/en/](http://shestakovyachtsales.com/en/)

---

## Telephones

---

USA: +1(954)274-4435

---

## Office hours

---

Monday – Saturday: **9:00 - 21:00** EDT

Sunday: **closed**

---

## Address

---



Harbour Towne Marina, 850 NE 3rd St,  
STE 213, Dania, FL 33004