

SHEILA G — MARQUIS



Судостроитель: MARQUIS

Год постройки: 2003

Модель: Моторная яхта

Цена: **ЦЕНА ЯХТЫ ПО ЗАПРОСУ**

Местонахождение: United States

Длина общая: 59' 0" (17.98m)

Ширина: 16' 6" (5.03m)

Мин. осадка: 4' 11" (1.50m)

Крейс. скорость: 23 Kts. (26 MPH)

Макс. скорость: 26 Kts. (30 MPH)

Купить **SHEILA G — MARQUIS** а также выбрать подходящую вам яхту из нашего каталога яхт вам поможет опытный яхтенный брокер Андрей Шестаков. На сегодняшний день компания **Shestakov Yacht Sales Inc.** имеет большое количество яхт в собственном списке продаж, а также тесно сотрудничает со всеми крупными яхтенными производителями по всему миру.

Для того чтобы купить яхту **SHEILA G — MARQUIS** а также проконсультироваться по любому вопросу связанному с покупкой, продажей, чартером яхт позвоните по телефону **+7(918)465-66-44**.

ОГЛАВЛЕНИЕ

ОГЛАВЛЕНИЕ	2
ХАРАКТЕРИСТИКИ	5
Обзор	5
Основная информация	5
Размеры	5
Скорость, вместимость и масса	5
Размещение	6
Корпус и палуба	6
Информация о двигателе	6
ПОДРОБНОЕ ОПИСАНИЕ	7
Vessel Highlights	7
Salon	7
Galley	7
Lower Helm Station	7
Lower Helm Electronics	7
Companionway	8
Master Stateroom	8
Master Head	8
VIP Guest Stateroom/Forward	8
VIP Guest Stateroom Head	8
Guest Stateroom	8
Aft Deck/Swim Platform	9
Fly Bridge & Helm	9
Electronics	9
Hull & Deck	9
Engineer Room & Mechanical	10
Electrical	10
Exclusions	10

Исключения	10
Отказ от ответственности	10
ФОТОГРАФИИ	11
Port View	11
Salon	11
Salon	11
Salon	11
Salon - Galley	12
Galley	12
Galley	12
Galley	12
Lower Helm	12
Lower Helm - Settee	12
Lower Helm	13
Master Stateroom	13
Master Stateroom	13
maste	13
Master Head	13
VIP Stateroom	13
Guest Head	14
Twin Stateroom	14
Lower Deck Landing	14
Washer & Dryer - Companionway	14
Aft Deck Steering	15
Fly Bridge Helm	15
Fly Bridge - Refrigerator	15
Fly Bridge - Grill	15
Fly Bridge - Wet Bar	15
Engine Room	15

Engine Room	16
Engine Room	16
Engine Room	16
Engine Room	16
Engine Room	17
Engine Room	17
Engine Room	17
Engine Room	17
Engine Room	17
Engine Room	18
Aft Deck	18
Tender	18
Stern View	18
КОНТАКТЫ	19
Контактная информация	19
Телефоны	19
Время работы	19
Адрес	19

ХАРАКТЕРИСТИКИ

Обзор

The 59 Marquis motor yacht was introduced to compete with the Euro look of boats that were being imported to the United States with great lines and a sleek appearance. The SHEILA G not only has a beautiful profile and great looks, but handles very well. Easy to dock with bow and stern thrusters, there are many other great features such as cockpit controls, bridge grill and aft lift for a dinghy. ****New A/C's and a new air handler installed in the lower staterooms February 2016****

Основная информация

Тип судна: Моторная яхта

Подкатегория: Flybridge

Модельный год: 2004

Год постройки: 2003

Страна: United States

Открытая палуба мостика: Да

Кубрик: Да

Размеры

Длина общая: 59' 0" (17.98m)

Ширина: 16' 6" (5.03m)

Мин. осадка: 4' 11" (1.50m)

Скорость, вместимость и масса

Крейс. скорость: 23 Kts. (26 MPH)

Макс. скорость: 26 Kts. (30 MPH)

Вместимость воды: 200 Gallons

Вместимость сточного бака: 80 Gallons

Объем топливного бака: 800 Gallons

Размещение

Всего кают: 3

Всего коек: 4

Спальные места: 6

Всего ком. состава: 2

Корпус и палуба

Материал корпуса: Fiberglass

Материал палубы: Fiberglass

Комплектация корпуса: Modified V-Hull

Цвет корпуса: White

Дизайнер интерьера: Nuvolari-Lenard

Информация о двигателе

Производитель: MTU

Модель: Series 60

Тип двигателя: Inboard

Тип топлива: Diesel

ПОДРОБНОЕ ОПИСАНИЕ

Vessel Highlights

- Factory hardtop
- Large aft deck with aft cockpit controls
- 2014 11' skipper HBI with 40 hp Evinrude
- Bow thruster & stern thruster
- SAT television
- Dingy transom lift
- Underwater lights

Salon

• Heavy-duty stainless steel aft salon door with screen slide out • Beige carpet • (2) Leather sofa (brown) with recliners at each end • Custom salon blinds • High-gloss teak dropleaf hi-lo table • Aft privacy curtain • Overhead lighting • Bose stereo speakers with surround sound • High-gloss cherry wood paneling throughout • Sony entertainment center receiver with Sony DVD player • Samsung 50" flatscreen television with SAT television receiver • Cruisair air a/c with digital controls • Electrical outlets • (2) Electrical panels

Galley

• Open galley to starboard • Black granite countertop with large recessed stainless steel sink and designer faucet • Storage under counter • Granite flooring • Sub-Zero under counter refrigerator/freezer • Kitchen Aid stainless steel microwave/convection grill • Fisher & Paykel dishwasher • Wine cooler • Built-in Keurig coffee maker • Princess two-burner cooktop • Cabinet space and drawers • 30 gallon hot water heater • Electrical outlets • Exhaust fan

Lower Helm Station

• Side exit door • Forward lounge seating to starboard with table • Trim tab indicators • Electronics package • MTU single lever shifters • Helm chair • Wraparound windshield • Tilt wheel • Ritchie 5" compass

Lower Helm Electronics

• Raymarine E80 plotter/GPS • Raymarine autopilot • Raymarine VHF radio • Jabsco spotlight control • Voyager closed circuit TV display • Raymarine VHF speaker

Companionway

• High-gloss cherry wood throughout • Malber stack washer and dryer • Storage cabinet • Carpet • Courtesy lights in steps • Overhead lighting • Privacy doors to staterooms and heads

Master Stateroom

• Located aft, full beam • Island king bed • Mirrored headboard • High-gloss cherry wood throughout • Designer bedding and pillows • Beige carpet • Sliding privacy door • Port holes with curtains • Nightstands with reading lamps and drawer storage • Cruisair a/c with SMX digital controls • (2) Dresser mirrors port and starboard • (2) Large cedar-lined hanging closets • Overhead headliner • Panasonic 29" flatscreen television with SAT receiver • Electrical outlets • CO detector • Overhead lights • En-suite head

Master Head

• Black granite flooring • VacuFlush head • Stall shower with large tub • Port hole window • Black granite counter top with molded sink and designer faucet • Storage below vanity • Large mirror • High-gloss cherry cabinets • Towel racks • Electrical outlets • A/C vent • Exhaust fan

VIP Guest Stateroom/Forward

• Queen berth with mirrored headboard • Bomar overhead hatch with screen • Clarion am/fm stereo receiver • Storage under bed • Storage port and starboard above bed • Designer bedding and pillows • Carpet • Dropdown television with DVD • High-gloss cherry wood throughout • Reading lights • Cruisair a/c with digital controls and vent • Hanging lockers port and starboard • En-suite head

VIP Guest Stateroom Head

• Stall shower • Black granite countertop, vanity, sink and mirror • Black granite flooring • VacuFlush head • Mirrored medicine cabinet • Porthole in stall shower • Towel racks • Overhead lights • A/C vents • Exhaust vents

Guest Stateroom

• Over/under single berths • Bedding and pillows • Carpet • Hanging locker • High-gloss cherry wood • Reading light • Overhead lighting • Electrical outlets • Smoke detector • Porthole

Aft Deck/Swim Platform

• Side doors port and starboard • (2) Teak folding chairs • Aft door on transom • Cockpit controls with bow and stern thruster controls • Heavy-duty stainless steel salon door • Storage areas port and starboard • Engine room access in cockpit sole • Stainless steel heavy-duty cleats • Steps up and down to swim platform • Freshwater shower • Wash down • Courtesy lighting • Outlets for television/telephone • Stainless steel rails • Aft camera • Molded bridge steps • Scuppers • Dockside water inlet • 2014 11' skipper HBI with 40 hp Evinrude • Aft lift for tender • Overhead lights • Sony overhead speakers • Access to lazarette • Extended overhand for aft deck • Fuel fill caps port and starboard • Glendinning shore power; two 50 amp cords

Fly Bridge & Helm

• MTU engine displays • MTU single lever controls • Voyager closed circuit TV display at helm • Electronics package • Dual helm chairs with portside settee • Wet bar with stainless steel sink and storage • Gaggenau grill • U-line icemaker • U-line refrigerator • Aft seating with cushions and table • Horn • Trim tabs with indicators • Windlass remote • Fireboy remote • 12V adaptor • Ritchie 5" compass • ACR spotlight controls • Bow thruster and stern thruster • Clarion stereo with speakers

Electronics

- (2) Raymarine E80 display/GPS
- Raymarine radar
- Raymarine VHF radio
- Raymarine autopilot
- Voyager closed circuit TV display
- Clarion stereo with speakers

Hull & Deck

• White hull sides • Black bottom paint and boot stripe • Hard top • Bow pulpit with stainless steel rails • Bow thruster and stern thruster • Trim tabs with indicators at both helms • Transom door and side doors • Windlass with remote at helm • Aft lift for dinghy • Dockside water inlet

Engineer Room & Mechanical

• Twin HP diesel engines • MTU Series 60/825 HP with 400 hours • ZF gears • Kohler 23 KW diesel generator with 577 hours • Large fire suppression bottle • Oil change system • A/C raw water pumps • Hot water heater • Engine room blower and fans • Dripless shaft logs • Overhead lighting • Charles battery chargers; 80 amp and 50 amp • Charles IQ2600 inverter • Fuel tanks • Racor filters • Fuel water separators • Fuel tanks • Bilge pumps

Electrical

• Kohler 23 KW diesel generator with 577 hours • 12V/24V/120V/240V 50 amp system • Electrical panel and sub-panel • Charles battery chargers • Battery parallel • Shore cords with cable master • Battery bank

Exclusions

• Owners personal belongings, clothes, tools • Please inquire about full exclusion list

Исключения

При продаже яхты исключаются личные вещи владельца.

Отказ от ответственности

Компания предоставляет описание судна или яхты добросовестно, но не может гарантировать точность этой информации, а также не ручается за техническое состояние. Покупатель должен проинструктировать своих агентов или оценщиков исследовать представленную информацию более подробно, по собственному желанию. Продажа судна или яхты, изменение цены или снятие с продажи будет происходить без предварительного уведомления.

ФОТОГРАФИИ

Port View



Salon



Salon



Salon



Salon - Galley



Galley



Galley



Galley



Lower Helm



Lower Helm - Settee



Lower Helm



Master Stateroom



Master Stateroom



maste



Master Head



VIP Stateroom



Guest Head



Twin Stateroom



Lower Deck Landing



Washer & Dryer - Companionway



Aft Deck Steering



Fly Bridge Helm



Fly Bridge - Refrigerator



Fly Bridge - Grill



Fly Bridge - Wet Bar



Engine Room



Engine Room



Engine Room



Engine Room



Engine Room



Engine Room

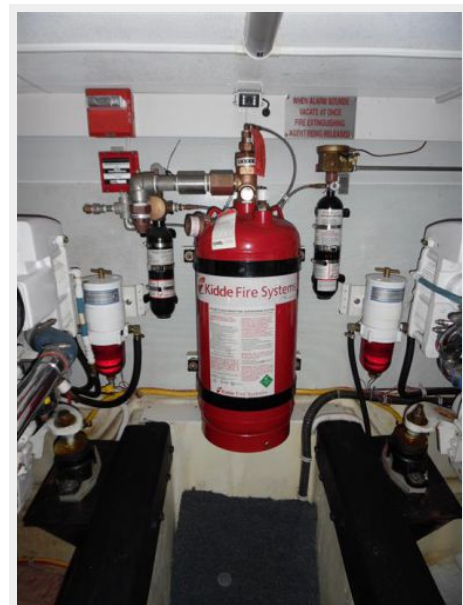


Engine Room



Engine Room

Engine Room



Engine Room



Aft Deck



Tender



Stern View



КОНТАКТЫ

Андрей Шестаков (Andrey Shestakov) – ведущий яхтенный брокер отдела продаж яхт и судов компании Shestakov Yacht Sales Inc. Официальный представитель Shestakov Yacht Sales Inc. для русскоговорящих клиентов в центральном офисе компании в Майами/Форт Лодердейл/Флорида/США.

Контактная информация

Email: andrey@shestakovyachtsales.com

Web: shestakovyachtsales.com

Телефоны

Краснодарский край: **+7(918)465-66-44**

США, Майами, Флорида: **+1(954)274-4435**

Время работы

Понедельник – Суббота: **9:00 - 21:00**
EDT

Воскресенье: **Закрето**

Адрес



Harbour Towne Marina, 850 NE 3rd St,
STE 213, Dania, FL 33004