

SEA DIVA — AZIMUT



Builder: AZIMUT

Year Built: 1998

Model: Motor Yacht

Price: PRICE ON APPLICATION

Location: United States

LOA: 58' 0" (17.68m)

Beam: 15' 11" (4.85m)

Min Draft: 3' 9" (1.14m)

Max Draft: 4' 1" (1.24m)

Cruise Speed: 26 Kts. (30 MPH)

Max Speed: 31 Kts. (36 MPH)

Our experienced yacht broker, Andrey Shestakov, will help you choose and buy a yacht that best suits your needs **SEA DIVA — AZIMUT** from our catalogue. Presently, at Shestakov Yacht Sales Inc., we have a wide variety of yachts available on our sale's list. We also work in close contact with all the big yacht manufacturers from all over the world.

If you would like to buy a yacht **SEA DIVA — AZIMUT** or would like help answering any questions concerning purchasing, selling or chartering a yacht, please call **+1(954)274-4435**

TABLE OF CONTENTS

TABLE OF CONTENTS	2
SPECIFICATIONS	6
Basic Information	6
Dimensions	6
Speed, Capacities and Weight	6
Accommodations	7
Hull and Deck Information	7
Engine Information	7
DETAILED INFORMATION	8
Walkthrough	8
Salon	8
Galley	9
Pilothouse Area	9
Companionway	9
Guest Cabin	10
Guest Head	10
Master Stateroom	10
Master Head	11
VIP Cabin	11
VIP Head	11
Foredeck	12
Aft Deck	12
Crew Area	12
Tender	12
Flybridge	12
Helm Area	13
Engine Room	13
Electrical	13

Construction Details	13
Remarks	14
Exclusions	14
Disclaimer	14
Exclusions	14
Disclaimer	14
PHOTOS	15
Salon Looking Forward	15
Salon Joinery Detail	15
Salon Starboard Side Settee	15
Salon Dining Settee	15
Salon Entertainment Center	16
Salon Looking Forward	16
Salon Looking Aft	16
Salon Silverware Storage	16
Galley Entrance	17
Salon Dish Storage	17
Galley	17
Galley	17
Galley Fridge/Freezer	18
Pilothouse Helm	18
Pilothouse Raymarine E-90W	18
Pilothouse Helm	18
Pilothouse Electronics	18
Pilothouse VHF	18
Portside of Helm	19
Starboard Side of Helm	19
Companionway Upper	19
Pilothouse Electrical Panel	19

Companionway Lower	20
Guest Cabin	20
Guest Head	20
Master	20
Master to Starboard	21
Master Looking Forward	21
Master Head	21
VIP Cabin	21
VIP Cabin	21
VIP TV	21
VIP Head	22
VIP Shower/Bidet	22
Bow	22
Bow	22
Spacious Side Deck	23
Anchor Detail	23
Aft Deck	23
Aft Deck	23
Transom	24
Cockpit Panel	24
11' Boston Whaler	24
Flybridge Looking Forward	24
Flybridge Dinette	24
Flybridge Wet Bar	24
Flybridge Sun Pad	25
Flybridge Helm	25
Flybridge Raymarine E-120W	25
Flybridge Stereo	25
Arch Equipment	25

Cockpit Engine Room Access	25
Starboard Engine	26
Port Engine	26
Forward Engine Room Galley Access	26
Forward Engine	26
New AC Units	26
Kholer Generator	26
Joinery Detail Mother of Pearl Inlay	27
Aug. 2015 Yard Visit	27
Aug. 2015 Yard Visit	27
Aug. 2015 Yard Visit	27
Aug. 2015 Yard Visit	28
Freedom Lift	28
Freedom Lift	28
Alternate Profile	28
CONTACTS	29
Contact details	29
Telephones	29
Office hours	29
Address	29

SPECIFICATIONS

Basic Information

Category: Motor Yacht

Sub Category: Flybridge with Euro Transom

Model Year: 1999

Year Built: 1998

Country: United States

Vessel Top: Bimini Top

Fly Bridge: Yes

Dimensions

LOA: 58' 0" (17.68m)

LWL: 54' 0" (16.46m)

LOD: 57' 8" (17.58m)

Beam: 15' 11" (4.85m)

Min Draft: 3' 9" (1.14m)

Max Draft: 4' 1" (1.24m)

MFG Length: 57' 8" (17.58m)

Speed, Capacities and Weight

Cruise Speed: 26 Kts. (30 MPH)

Cruise Speed RPM: 2000 Kts.

Max Speed: 31 Kts. (36 MPH)

Max Speed RPM: 2400 Kts.

Displacement: 58000 Pounds

Gross Tonnage: 29 Pounds

Water Capacity: 238 Gallons

Holding Tank: 90 Gallons

Fuel Capacity: 688 Gallons

Accommodations

Total Cabins: 3

Total Berths: 4

Sleeps: 6

Total Heads: 3

Crew Cabin: 1

Crew Berths: 1

Crew Sleeps: 1

Crew Heads: 1

Hull and Deck Information

Hull Material: Fiberglass

Deck Material: Teak

Hull Configuration: Modified V-Hull

Hull Finish: Fiberglass

Hull Designer: Azimut

Exterior Designer: Azimut

Interior Designer: Azimut

Engine Information

Engines: 2

Manufacturer: MTU

Model: 8V-183TE93

Engine Type: Inboard

Fuel Type: Diesel

DETAILED INFORMATION

Walkthrough

Boarding from either the swim platform via a floating dock or side decks one enters the teak laid Aft Deck with built in seating and a free standing table. Entry to the Salon via a sliding door is to port.

A bar height countertop is to port with Galley forward and below. To starboard is a J shaped leather sofa to seat four. Forward is a Dinette/settee to seat five with a fixed height cherry table. Next forward is the Entertainment Center.

Up one step is a large Lower Station with a wraparound helm and a leather helm chair.

Down four steps to starboard is a twin lower berth Cabin.

Aft and down two steps is the Master Cabin with a private head and shower.

Forward to port is the third Head for the Guest Cabin.

All the way forward is a queen size VIP with a private head and shower.

The Flybridge is accessed from the Aft Deck and includes a center helm with a three person helm seat, a dinette with table, a sun pad aft and a wet bar with a drink refrigerator.

Salon

Entering slightly to port from the Aft Deck is the wide open Salon.

A bar height counter is just inside with two storage cabinets facing aft. To starboard is a slim locker between the door and the sofa perfect for storing folding chairs. The sofa is a brushed blue leather five cushion sofa with storage below. There are three fiddled shelves aft and starboard in the corner.

A small burlwood coffee table lies in front of the sofa. Outboard are large side windows covered with pleated shades. Above a freeform wood soffit contains five LED lights.

Next forward is a five person dining settee with a fixed height dining table in front. Just forward of the dinette are two open shelves and three cabinet doors followed by the Salon's Entertainment Area with a 39" Samsung LCD TV, a Samsung DVD player and a JVC AM/FM/CD player with an iPod connection. There is space for a Sat TV receiver as well as two dedicated LED lights are above the Dining Area.

The portside has matching windows and shades to let in ample lighting. Also in this area are full drapes across the aft entry doors, a carpeted sole and a mirrored detail on the ceiling. Also in the

Salon is SMX II digital AC controls and rope lighting under the sofa and at the overhead soffits.

Galley

The yacht's Galley occupies the port aft corner of the Salon and is down three steps in order to maximize the space.

Equipment includes:

Teak & holly sole Corian type molded countertops with integral molded sink Removable spray faucet Trash chute Princess 2 burner ceran top cooktop GE turntable microwave oven Ellca range hood with work light (11) High gloss cherry wood doors Sub panel electrical panel Nemo opening porthole Under counter work light Coolmatic refrigerator/freezer behind a cherry door Forward Engine Room access LED lighting from the Salon above

Pilothouse Area

Forward from the Salon to starboard up one step is the Companionway leading forward.

Behind a cherry door are four drawers fitted for silverware storage. Next forward behind a cherry door is a pullout shelf for dish/cup storage. Further forward is a large cherry door cabinet presently used to store the yacht's manuals.

To port is the large curved Lower Helm. The yacht's main electrical panel is behind smoked glass doors in this area.

Besides a blue leather helm seat that adjusts electrically are two side benches with storage below.

Helm equipment includes:

Raymarine E-90 widescreen Hybrid Touch GPS/radar/plotter Vetus bow thruster controls ITT Jabsco searchlight controls Cherry wood helm wheel Mathers electronic clutch & throttle controls VDO rudder angle indicator VDO tachometers Full VDO engine gauges & alarm lights VDO digital depth meter Raymarine Ray 240 handset type VHF Raymarine remote VHF speaker Raymarine ST-6002 Smart Pilot Raymarine ST-70 digital depth/speed/log Key start/stop switches Analog trim tab indicator/trim tab controls Ritchie 4" magnetic compass Kholer generator start/stop switch Chelsea brass clock & barometer (2) 12 Volt accessory outlets (2) VDO engine hour meters VDO freshwater gauge VDO fuel gauge Wema holding tank gauge Graphic boat panel for pumps/Nav lights Windlass controls Wiper controls Battery parallel switch Teak footrest (4) LED lights overhead (2) Additional storage cabinets

Companionway

Down four steps to a landing with a starboard side entry into a twin Lower Cabin. Down two more steps to the Master Cabin entrance aft.

Up two steps and forward to the Guest Head/Day Head.

Forward is the VIP Cabin all the way forward.

Guest Cabin

Entered via an aft door is the Guest Cabin with two lower berths separated by a two drawer burlwood type nightstand with a sconce light above.

Each berth has one drawer below with additional storage under the mattress. Above the outboard berth are two opening portholes behind a pleated shade. A “Vee” shaped mirror is above the nightstand with two overhead lights above.

At the foot of the outboard berth is a hanging locker with shelves within.

At the foot of the inboard berth is a 19” Septre LED TV. Above are three additional halogen mini spots as well as rope lighting below the berth.

Guest Head

Forward from the Guest Cabin is the Guest Head which also serves as the Day Head. There is one cabinet in the curved vanity with a Corian like countertop and molded sink above. The walls are matching molded Corian for ease of maintenance.

The toilet is a Vacuflush model. Outboard of the toilet is a storage cabinet with two mirrored medicine cabinet doors above separated by an opening porthole behind silver mini blinds.

The shower has a three sided curtain, teak grate sole and a handheld or wall mountable fixture. Also in the Head is a fiberglass sole, four halogen mini spots and an exhaust fan.

Master Stateroom

The Master is aft and amidships, located in the quietest part of the vessel. The berth is off the port aft corner and has one drawer at the foot of the bed with additional storage below the mattress. Built in burl top nightstands offer storage below a removable panel. Outboard is an opening porthole behind a pleated shade.

The aft bulkhead is mirrored. Either side of the berth are cherry hanging lockers.

To starboard is the private head entry. Also in this cabin is a 23” Spectre LED TV, seven LED lights and rope lights below the berth.

Master Head

To starboard is the Master Head entrance with a molded vanity with two storage cabinets below a Corian like countertop with a molded sink and a two tone fixture above, a beveled edge mirrored medicine cabinet, an opening porthole behind a silver mini blind and a Vacuflush toilet.

The stall shower has a curtain on the forward side, a teak grate sole, a handheld or wall mountable shower fixture, a light and an exhaust fan.

Also in the Head are three additional halogen overhead lights and a molded fiberglass sole.

VIP Cabin

All the way forward is the VIP Cabin with a pedestal berth off the forward bulkhead. There are two drawers below the foot of the berth. The headboard is mirrored and flanked by two sconce type reading lights. Built in shelves port and starboard serve as nightstands. Behind pleated shades to both port and starboard is an opening porthole.

Aft to starboard is a hanging locker and two additional cabinets for storage. On the aft bulkhead is a 32" LG LCD TV. To port is an additional hanging locker.

Aft is the entrance to the VIP Head.

Above is an opening deck hatch with a sliding privacy screen and seven LED light fixtures.

Also in this cabin is a carpeted sole, SMX AC controls and a hatch in the sole to access the thruster.

VIP Head

Accessed only from the VIP is the private VIP Head. The curved vanity has one cabinet door below and a molded countertop and sink above. The fixture is two tone. The toilet is a Vacuflush model.

The stall shower has a Lucite hinged door and matching side light. The fixture is handheld or wall mountable. The sole is a teak grate. Also within the shower is a bidet under a hinged seat, three storage lockers and an opening porthole behind silver mini blinds.

Also in the Head are four halogen mini spots and an exhaust fan.

Foredeck

Fiberglass nonskid decks Stainless steel bow rail w/lifeline Stainless steel anchor roller Lofrans vertical DC windlass Up & down foot switches 66 Lb. Bruce type anchor Approx. 300' of anchor chain Double door access to anchor chain locker International Navigation lights Bow deck hatch into VIP Front black Textulene windshield cover Front windshields reportedly pulled & resealed 2013 (2) Windshield wipers/washers (2) Sun lounge cushions on bow with cover Handrail at aft side decks Marquipt 6 step Tide Ride ladder stores on starboard side deck

Aft Deck

Teak over fiberglass sole Steps to port & starboard side decks (2) Aft Deck capstans Side deck & aftward fare leads (2) Stainless steel boarding gates w/Plexi insert Built in seating for 3 – 4 people w/removable cushions Access below seating into Crew Cabin (2) Steps port and (2) steps starboard to oversize teak laid Integral swim platform Freedom Lift hydraulic boat lift aft of swim platform, new 2013 2008 11' Boston Whaler tender w/helm steering & 25 HP Mercury 4 S outboard Stainless steel swim ladder Stereo speakers Hot/cold shower Raritan icemaker 8 Step stainless steel and teak tread ladder to Flybridge Locker w/(3) battery switches Main AC breaker & (4) auto fire pull handles Hi Lo varnished teak table Stowed boat hook (2) Lockers on swim platform for line storage Low level deck LED lights on swim platform Pullout stainless steel swim ladder under platform Telephone/TV inlet in portside aft locker 50 Amp Glendinning cable reel in starboard aft locker (6) Overhead stainless steel trimmed lights (2) Sony stereo speakers (2) Storage lockers on Aft Deck Opacmare stainless steel tinted sliding entry door

Crew Area

Not presently outfitted for crew this area is accessed from a hatch in the Aft Deck seat via a five step ladder.

The area is air conditioned, has a place for a berth and has a toilet, sink, vanity and a pullout spigot for a shower.

Although this area would have to be renovated to be used the basics are there and with minimal cost and effort it could be used as designed.

Tender

11' Boston Whaler 2008 25 HP 4 S Mercury OB Center helm/wheel steering Hummingbird 160 digital depth Bilge pump Battery Fortress anchor Bottom paint

Flybridge

Accessed via an Aft Deck ladder the Flybridge offers the following features:

Hinged access hatch Fiberglass nonskid sole Aft FRP arch w/KVH HD7 Tracvicon dome Raymarine Super HD digital radar w/4' open array Trumpet horns Searchlight, GPS sensors Stainless steel safety rail aft Canister life raft, not in certification (2) Removable sun cushions aft Stainless steel side safety rails U shaped seating midship Fiberglass table Three person helm seat w/reversible cushions Starboard side bar w/sink under a hinged top & a drink cooler behind a door Starboard side seat Bimini top w/stainless steel frame

Helm Area

Forward w/centerline helm w/the following equipment: Helm cover Wheel steering Ritchie 3" magnetic compass Microcommander clutch/throttle control Trim tab switch w/analog indicator 12 Volt outlet VDO tachometer & full engine gauges Raymarine ST60 + wind digital/analog Raymarine ST70 autopilot Raymarine ST70 digital depth Raymarine ST70 digital speed Raymarine Ray 40 VHF handset Raymarine remote VHF speaker Raymarine E-120 widescreen Hybrid Touch GPS/radar in Nav pod Fusion 600 AM/FM/CD w/iPod dock Battery parallel switch Vetus bow thruster controls (2) Storage boxes port & starboard

Engine Room

Large hatch w/gas shocks into Engine Room aft from Aft Deck Door into Engine Room forward from Galley (2) Racor 900 fuel filters for main engines 2 ½" Stainless steel prop shafts Vetus DC electric bow thruster Twin Disc MG 5114 RV transmission w/a 1.92 to one ratio in a Vee drive configuration Hydraulic steering Cruise Air AC system (2) 30,000 BTU compressor, (1) 16,000 BTU compressor, all recently replaced Generator expansion bottle Spin on Racor for generator Excalibur 24V water pump w/accumulator tank Whale Gulper pump Inspection panels for shaft logs Diamond plate decking over drive shafts 4 Step ladder into aft Engine Room (2) Engine Room blowers Large engine intake strainers

Electrical

12/24 Volt DC electrical system 110/220 Volt AC 60 HZ electrical system Kohler 18.5 KW generator w/1341 hours 12V 10 Amp ProMariner battery charger 24V 60 Amp Sentry battery charger (6) 4D 12 volt batteries (3) Battery shutoff switches (remote) 50 Amp 220 volt Glendinning cable reel aft Bonding system Battery charger amp meter at main panel DC amp meter at main panel DC service battery voltmeter at main panel DC start battery voltmeter at main panel (2) AC amp meters at main panel (29) Breaker protected DC circuits at main panel (6) Breaker protected AC circuits at main panel Subpanels located throughout boat at each cabin

Construction Details

Dead rise 18 degrees Prop pockets for reduced draft

Remarks

It's hard to believe all that's packed into this high style 58' Euro Cruiser; three staterooms, three heads, a large Lower Station, a Flybridge for a crowd and even a small Crew Cabin if needed.

Surprising details such as inlaid mother of pearl trim, burlwood and gold accents help define this classy cruiser from the rest.

Taken on trade as part of a large Azimut sale SEA DIVA is seriously offered for sale.

Recent additions include: Freedom tender lift 11' Boston Whaler w/25 HP OB KVH Tracvision HD 7 Raymarine electronics suite Newer teak decks, aft and on swim platform Aug. 2015 bottom paint – blister free bottom at launching.

Exclusions

While every effort was made to list all pertinent included equipment aboard SEA DIVA, there are some personal belongings aboard. Prospective purchasers should assume any item not specifically mentioned herein will not convey at closing.

Disclaimer

The Company offers the details of this vessel in good faith but cannot guarantee or warrant the accuracy of this information nor warrant the condition of the vessel. A buyer should instruct his agents, or his surveyors, to investigate such details as the buyer desires validated. This vessel is offered subject to prior sale, price change, or withdrawal without notice.

Exclusions

Owner's personal belongings.

Disclaimer

The Company offers the details of this vessel or yacht in good faith but cannot guarantee or warrant the accuracy of this information nor warrant the condition of the vessel. A buyer should instruct his representatives, agents, or his surveyors, to investigate such details as the buyer desires validated. This vessel or yacht is offered subject to prior sale, price change, or withdrawal without notice.

PHOTOS

Salon Looking Forward



Salon Joinery Detail



Salon Starboard Side Settee



Salon Dining Settee



Salon Looking Forward



Salon Entertainment Center



Salon Looking Aft



Salon Silverware Storage



Salon Dish Storage



Galley Entrance



Galley



Galley



Galley Fridge/Freezer



Pilothouse Helm



Pilothouse Raymarine E-90W



Pilothouse Helm



Pilothouse Electronics



Pilothouse VHF



Portside of Helm



Starboard Side of Helm



Pilothouse Electrical Panel



Companionway Upper



Companionway Lower



Guest Cabin



Guest Head



Master



Master Looking Forward



Master to Starboard



Master Head



VIP Cabin



VIP Cabin



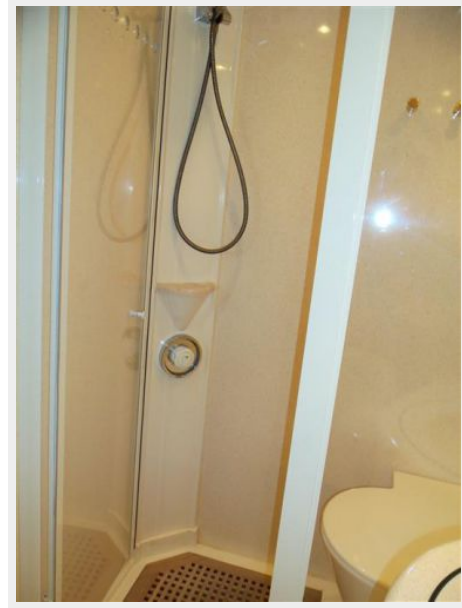
VIP TV



VIP Head



VIP Shower/Bidet



Bow



Bow



Anchor Detail



Spacious Side Deck



Aft Deck



Aft Deck



Transom

Cockpit Panel



11' Boston Whaler



Flybridge Looking Forward



Flybridge Dinette



Flybridge Wet Bar



Flybridge Sun Pad



Flybridge Helm



Flybridge Raymarine E-120W



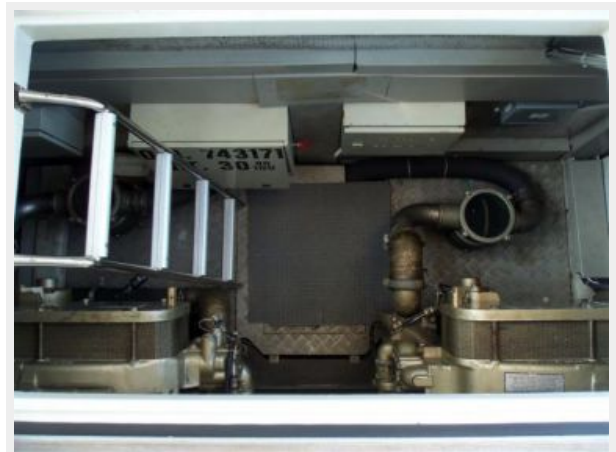
Flybridge Stereo



Arch Equipment



Cockpit Engine Room Access



Starboard Engine



Port Engine



Forward Engine Room Galley Access



Forward Engine



New AC Units



Kholer Generator





Joinery Detail Mother of Pearl Inlay



Aug. 2015 Yard Visit



Aug. 2015 Yard Visit



Aug. 2015 Yard Visit



Aug. 2015 Yard Visit



Freedom Lift



Freedom Lift



Alternate Profile



CONTACTS

Andrey Shestakov, leading yacht broker of the sales department of Shestakov Yacht Sales Inc. Shestakov Yacht Sales Inc., the official representative of the Miami/Fort Lauderdale FL headquarters.

Contact details

Email: andrey@shestakovyachtsales.com

Web: shestakovyachtsales.com/en/

Telephones

USA: +1(954)274-4435

Office hours

Monday – Saturday: **9:00 - 21:00** EDT

Sunday: **closed**

Address



Harbour Towne Marina, 850 NE 3rd St,
STE 213, Dania, FL 33004