

ELIZABETH — TRINITY



Builder: TRINITY

Year Built: 1999

Model: Motor Yacht

Price: PRICE ON APPLICATION

Location: United States

LOA: 118' 0" (35.97m)

Beam: 26' 0" (7.92m)

Max Draft: 6' 0" (1.83m)

Cruise Speed: 16 Kts. (18 MPH)

Max Speed: 21 Kts. (24 MPH)

Our experienced yacht broker, Andrey Shestakov, will help you choose and buy a yacht that best suits your needs **ELIZABETH — TRINITY** from our catalogue. Presently, at Shestakov Yacht Sales Inc., we have a wide variety of yachts available on our sale's list. We also work in close contact with all the big yacht manufacturers from all over the world.

If you would like to buy a yacht **ELIZABETH — TRINITY** or would like help answering any questions concerning purchasing, selling or chartering a yacht, please call **+1(954)274-4435**

TABLE OF CONTENTS

TABLE OF CONTENTS	2
SPECIFICATIONS	3
Overview	3
Basic Information	3
Dimensions	3
Speed, Capacities and Weight	3
Accommodations	4
Hull and Deck Information	4
Engine Information	4
DETAILED INFORMATION	5
Accommodations	5
Electrical Equipment	5
Electronics	5
Mechanical	6
Deck Equipment	6
Tenders	6
Boat Highlights	6
Exclusions	7
Disclaimer	7
PHOTOS	8
CONTACTS	17
Contact details	17
Telephones	17
Office hours	17
Address	17

SPECIFICATIONS

Overview

MAJOR PRICE REDUCTION 9/5/2018 NOW \$3,750,000.00 "ELIZABETH" has had significant upgrades in the past year. The first impression ELIZABETH imparts to her visitors is of disarming elegance. Rich cherry wood joinery and sumptuous appointments, hint at an Edwardian refinement and yet the very nature of the space speaks to polished informality. Thanks to noteworthy design and engineering, ELIZABETH's main salon and formal dining areas - separated by a beautiful and unusual granite bar - are unencumbered by space - stealing support columns. The result is a room with the kind of space and proportion usually found on significantly larger yachts!

Basic Information

Category: Motor Yacht

Sub Category: Semi-Displacement

Model Year: 1999

Year Built: 1999

Country: United States

Vessel Top: Bimini Top

Fly Bridge: Yes

Dimensions

LOA: 118' 0" (35.97m)

Beam: 26' 0" (7.92m)

Max Draft: 6' 0" (1.83m)

Speed, Capacities and Weight

Cruise Speed: 16 Kts. (18 MPH)

Max Speed: 21 Kts. (24 MPH)

Gross Tonnage: 251 Pounds

Water Capacity: 2500 Gallons

Holding Tank: 3000 Gallons

Fuel Capacity: 9500 Gallons

Accommodations

Total Cabins: 4

Sleeps: 9

Total Heads: 5

Captain Cabin: True

Crew Cabin: 3

Crew Sleeps: 6

Hull and Deck Information

Hull Material: Aluminum

Deck Material: Teak

Hull Configuration: Semi-Displacement

Hull Finish: Aluminum

Engine Information

Engines: 2

Manufacturer: Caterpillar

Model: 3412

Engine Type: Inboard

Fuel Type: Diesel

DETAILED INFORMATION

Accommodations

Entering the yacht at the Main Foyer and going forward into the open "country kitchen" Galley which features stainless steel appliances, a large island and a beautiful granite table surrounding a settee with seating for up to 8. Moving aft from the Galley to the formal Dining area with seating for 8 and an elegant soffit above. The on-deck Powder Room is located on the port side amidships. The Salon features new furniture and universal entertainment system.

A stairway on the starboard side leads to the Owners and Guest Staterooms below. Two Guest Staterooms mirror each other as you enter the lower deck each with queen bed and ensuite head. A Twin Guest Stateroom is located port amidship and includes a pullman berth and ensuite head. The full-beam Master Suite features his and her baths with separate Jacuzzi and shower as well as an oversized closet. All staterooms feature TVs, DVDs, VCRs and Direct TV.

From the Main Foyer, a stairway leads up to the raised Pilothouse. The Flybridge is accessed from the Pilothouse and includes a sunning area, U-shaped shaded seating area with table, a wet bar and a large boat deck area aft.

The Main Deck has an oversized Aft Deck for al fresco dining, a spiral staircase to the Flybridge, a refrigerator and icemaker and two curved stairways that lead to the swim platform.

Electrical Equipment

12V & 24V DC Systems. 110V 220V AC Systems. 2 Northern Lights 55 KW 3 phase generators with approximately 10,000 hours on each. Dual LaMarche isolation transformers. Dual Stabline voltage booster/regulators. 12V & 24V automatic battery chargers. Dual 100 amp shore power circuits. Dual 12V and 24 battery banks.

Batteries:

(4) Goulds 8D batteries; (2) 24 V banks each main engine (4) Goulds 8D batteries (2) 24 V banks each gen. starting; (1) 8D 12V ship's service

Electronics

CCTV System with 3 cameras, engine room, aft deck and mast 24 V AC transformer for cameras Channel plus dual modulator D2V/UB interface for Laserplot and CCTV to television system Toshiba Strata DK 16 phone System Wave WIFI system with 2 repeaters High speed internet with KVH Dome 20 Buttons and speakerphone; mandatory for programming B&G Hydra 2000

Cruise pack, Depth and water speed-temperature Analog wind angle indicator Full function display flybridge B&G 20/20 CD pack large display with control button DATAMARINE D3000 depth sounder C - Plath Autopilot C - Plath gyro compass Nobletech chart plotter Admiral Series Simrad RA713CA Color Radar NorthStar 6000i GPS-plotter SEA M602 VHF radio SEA 2250 SSB radio SEA Seahail Loudhailer 2 ACR Spotlights Furuno dFax Datamarine International Offshore Depth Alarm Fusion Stereo w Sirius XM for flybridge and bridge Alarm Panel FLYBRIDGE: Furuno ARPA Sperry Marine Rudder Angle Indicator C Plath Autopilot Navpilot V 2 spotlight remote controls B&G Hydra 2000 depth, speed Northstar 952X GPS Icom M504 VHF

Mechanical

JD Nall Aqua Air 20 tons total (3) soft start compressors, 5 tons each Aqua Air fan coil assemblies Air conditioned engine room and lazarette Watermaker: One Reverse Osmosis 2500 gal per day Sanitary System: Microphor LF 210 EL-RO System LF 210 toilets (8) 110 VAC Oberdoffer Macerator pump Dockside or direct overboard pump out (2) black water tanks Gray water tank with pump

Security System:

Security camera system: cameras cover aft deck and flybridge, engine room, swivel mast head; camera monitors in wheelhouse and galley.

Alarm System:

Standard engine room alarms monitored in engine room, captain's quarters, wheelhouse; smoke and thermal alarms throughout yacht

Deck Equipment

Maxwell VWC 6000 vertical electric anchor windlass (2) 100 amp 1phase shore supply cords MarQuipt 2500lbs. capacity davit with 2 speed hand held controls (2) 231lb. Poole galvanized anchors with rigging 350ft. galvanized anchor chain Custom hand rails Custom teak cap rails

Tenders

17' 6" Novurania with 115 hp outboard (2) Seadoo Waverunners GTI 130 new 2014 Dive Compressor

Boat Highlights

ELIZABETH has had numerous upgrades in 2014-15 and shows great. Owners are looking for a larger yacht and want her sold. Must be seen to be appreciated.

Exclusions

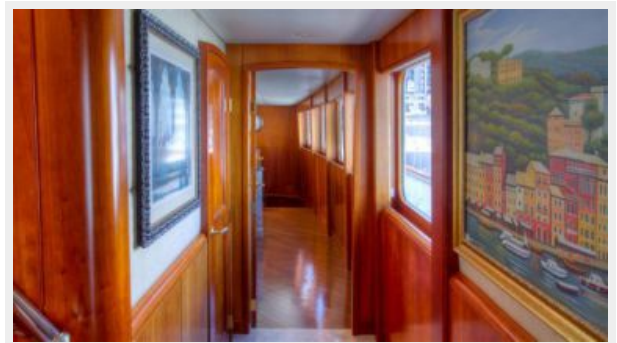
Owner's personal belongings.

Disclaimer

The Company offers the details of this vessel or yacht in good faith but cannot guarantee or warrant the accuracy of this information nor warrant the condition of the vessel. A buyer should instruct his representatives, agents, or his surveyors, to investigate such details as the buyer desires validated. This vessel or yacht is offered subject to prior sale, price change, or withdrawal without notice.

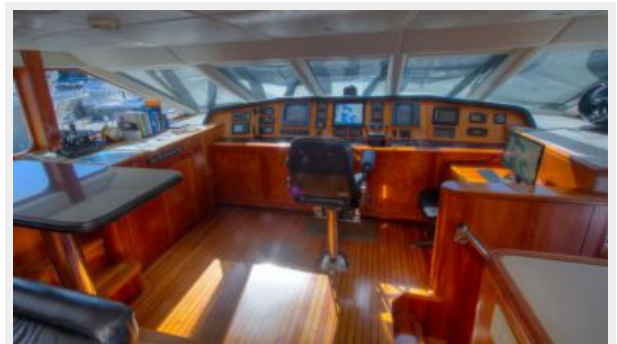
PHOTOS

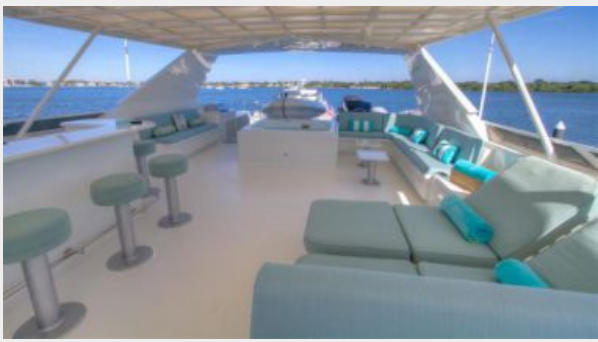


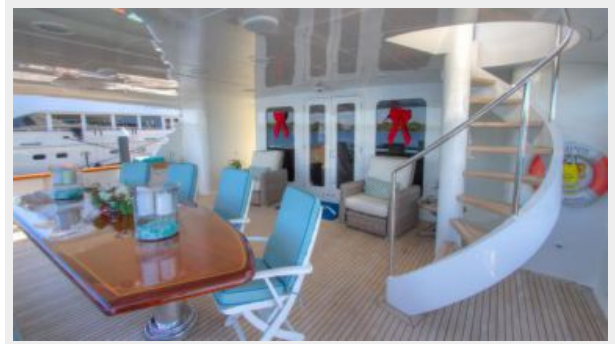
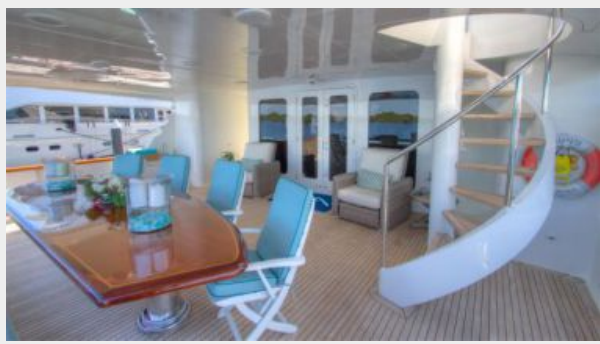
















CONTACTS

Andrey Shestakov, leading yacht broker of the sales department of Shestakov Yacht Sales Inc. Shestakov Yacht Sales Inc., the official representative of the Miami/Fort Lauderdale FL headquarters.

Contact details

Email: andrey@shestakovyachtsales.com

Web: shestakovyachtsales.com/en/

Telephones

USA: +1(954)274-4435

Office hours

Monday – Saturday: **9:00 - 21:00** EDT

Sunday: **closed**

Address



Harbour Towne Marina, 850 NE 3rd St,
STE 213, Dania, FL 33004