

## ANABASH — BROWARD



**Builder:** BROWARD

**Year Built:** 1992

**Model:** Motor Yacht

**Price:** PRICE ON APPLICATION

**Location:** United States

**LOA:** 100' 0" (30.48m)

**Beam:** 20' 0" (6.10m)

**Max Draft:** 6' 0" (1.83m)

**Cruise Speed:** 12 Kts. (14 MPH)

**Max Speed:** 14 Kts. (16 MPH)

Our experienced yacht broker, Andrey Shestakov, will help you choose and buy a yacht that best suits your needs **ANABASH — BROWARD** from our catalogue. Presently, at Shestakov Yacht Sales Inc., we have a wide variety of yachts available on our sale's list. We also work in close contact with all the big yacht manufacturers from all over the world.

If you would like to buy a yacht **ANABASH — BROWARD** or would like help answering any questions concerning purchasing, selling or chartering a yacht, please call **+1(954)274-4435**

# TABLE OF CONTENTS

TABLE OF CONTENTS	2
SPECIFICATIONS	4
Overview	4
Basic Information	4
Dimensions	4
Speed, Capacities and Weight	4
Accommodations	5
Hull and Deck Information	5
Engine Information	5
DETAILED INFORMATION	6
Accommodations & Layout	6
Engine & Mechanical Equipment	6
Electrical Equipment	7
Electronics & Navigation Equipment	7
Audio & Visual Equipment	7
Galley	8
Fly Bridge	9
Deck Equipment	9
Tenders	9
Safety & Fire Protection	9
Exclusions	10
Disclaimer	10
PHOTOS	11
Formal Dining	11
Aft Deck	11
Master Stateroom	11
Master Head - Her's	11
Master Stateroom	11

---

VIP Stateroom	11
Guest Stateroom	12
Office	12
Office - Converted to Guest Stateroom	12
Guest Head	12
Flybridge	12
Pilot House	12
Engine Room	13
Helm	13
Underway	13
CONTACTS	14
Contact details	14
Telephones	14
Office hours	14
Address	14

# SPECIFICATIONS

## Overview

A wide open layout with full beam master cabin and 3 en-suite guest cabins make ANABASH ideal for entertaining family and friends. Her spacious country kitchen forward, large covered aft deck for al fresco dining and huge flybridge afford plenty of entertaining and lounging space. Recently contributed to AMLkids and now available for lease with interest free terms to qualified individuals.

## Basic Information

<b>Category:</b> Motor Yacht	<b>Sub Category:</b> Raised Pilothouse
<b>Model Year:</b> 1992	<b>Year Built:</b> 1992
<b>Country:</b> United States	<b>Vessel Top:</b> Bimini Top
<b>Fly Bridge:</b> Yes	

## Dimensions

<b>LOA:</b> 100' 0" (30.48m)	<b>Beam:</b> 20' 0" (6.10m)
<b>Max Draft:</b> 6' 0" (1.83m)	

## Speed, Capacities and Weight

<b>Cruise Speed:</b> 12 Kts. (14 MPH)	<b>Max Speed:</b> 14 Kts. (16 MPH)
<b>Water Capacity:</b> 1000 Gallons	<b>Fuel Capacity:</b> 9000 Gallons

## Accommodations

Total Cabins: 4	Total Berths: 5
Sleeps: 8	Total Heads: 6
Captain Cabin: True	Crew Cabin: 2
Crew Berths: 4	Crew Sleeps: 5
Crew Heads: 1	

## Hull and Deck Information

Hull Material: Aluminum	Deck Material: Teak over Aluminum
Hull Configuration: Semi-Displacement	Hull Color: White
Hull Finish: Aluminum	

## Engine Information

Engines: 2	Manufacturer: Detroit Diesel
Model: 12V92TA	Engine Type: Inboard
Fuel Type: Diesel	

---

# DETAILED INFORMATION

---

---

## Accommodations & Layout

---

Entering the large, bright main salon from the aft deck, there is an U-shaped sofa to port with two coffee tables in front and an entertainment console to starboard flanked by two chairs. The large window on both sides and across the stern offer a panoramic view. At the forward end of the room is the dining table with eight chairs and a wet bar.

Forward to starboard, past the day head and the pilot house is the large country-style galley with the galley equipment and storage arrayed along the aft and port counters behind a center island. Forward is a table with a bench seat and chairs. The crew quarters, laundry and engine room access are down the stairs to starboard.

Down a staircase in the main salon are the guest accommodations. The full beam Master Suite is forward with a king berth, his and hers walk in closets and heads. His has a large shower with bench seats and hers has a Jacuzzi/shower combination. Aft to starboard is the VIP stateroom with a queen berth and en-suite head. To port is a double state room with twin berths and a fourth stateroom/office with upper and lower berths that convert into a couch and a large desk. All staterooms have en-suite heads.

The flybridge is accessed by the stairs in the pilot house or from the aft deck. The service and navigation area is forward with an island behind for the JennAir grill, beverage cooler and ice maker. Down either side are long bench seats and a raised, padded sunbathing area is across the aft end. There is a table for al-fresco dining across the aft end with four stools in front and seating on the front edge of the sun bathing platform. The area forward of the table is covered with an awning. Aft is the boat deck, which includes the tender crane, RIB dinghy.

---

## Engine & Mechanical Equipment

---

- Twin Detroit Diesel 12V92TA main engines (Serviced 2014)
- ZF BW195 gearboxes; 2.5:1 ratio
- NAIAD 302 Stabilizer system w/ 9 sqft fins
- American bow thruster
- Triple Racor Fuel filters on main engines
- Algae X system
- AquaAir 10-ton air conditioning/heating system (new chillers 2015)

---

## Electrical Equipment

---

- 110/220V AC, 60 Hz, single phase system
- 32kW Kohler generator & 60 kW Phasor / John Deere generator (2006)( Engine rebuilt 2015)
- Shore Power: 220V AC, 60 Hz, single phase
- 12v/24v DC system
- Main Engine Start Batteries: (4) 8D (2015)
- GenSet Start Batteries: (2) 4D (2014)
- Emergency Battery Bank: (2) 12v - Constavolt charger
- Separate Comms/Nav Battery Bank

---

## Electronics & Navigation Equipment

---

- KVH V-Sat 3 System with wireless (Installed July 2013)
- 2 x Furuno radar
- 48-mile Furuno radar installed July 2013
- 6" Danforth compass
- 4" Danforth compass
- Furuno NavPilot autopilot w/flybridge remote
- B&G Depth sounder
- Raytheon RN 300 GPS
- Northstar 800 GPS

---

## Audio & Visual Equipment

---

### Salon

- 40" TV Main
- Sony DVD player

- Samsung DVD player
- Niles A/V receiver
- Denon CD changer
- Hafler Amps (2)

#### Galley

- Advent LCD TV/DVD player

#### Master Suite

- LG LCD TV
- GE DVD player

#### VIP & Guest Staterooms

- Toshiba TV
- Sharp TV
- Envision LCD TV

#### Crew Mess

- Toshiba TV
- Panasonic Radio/CD player

## Galley

---

- GE Cooktop and compact oven
- Kitchen Aid Refrigerator and freezer
- GE dishwasher
- GE profile trash compactor
- Whirlpool microwave
- SubZero under counter fridge - salon
- Kitchen Aid icemaker - salon
- U-Line fridge - aft deck



---

## Fly Bridge

---

- JennAir grill
- U-Line fridge w/ icemaker
- Cushion seating all around
- Table seating for 10
- Awning cover

---

## Deck Equipment

---

- Ideal anchor windlass
- Fjord 250 lb. anchor
- 350' anchor chain
- Fortress Anchor and rode
- Nautical Structures davit
- Marquipt ladder (2014)
- Dock lines and fenders

---

## Tenders

---

- Capelli 460 15' hard-bottomed inflatable (2014) w/ Yamaha 40hp (2014), 4-stroke outboard

---

## Safety & Fire Protection

---

- 45lb Halon cylinder for engine room fixed fire fighting (Serviced 2014)
- Fire extinguishers throughout (Serviced 2014)
- (2) life rings
- USCG Safety package

---

## Exclusions

---

Owner's personal belongings.

---

## Disclaimer

---

The Company offers the details of this vessel or yacht in good faith but cannot guarantee or warrant the accuracy of this information nor warrant the condition of the vessel. A buyer should instruct his representatives, agents, or his surveyors, to investigate such details as the buyer desires validated. This vessel or yacht is offered subject to prior sale, price change, or withdrawal without notice.

# PHOTOS

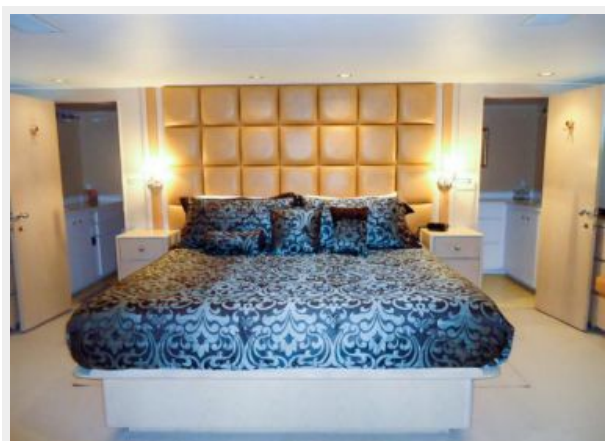
## Formal Dining



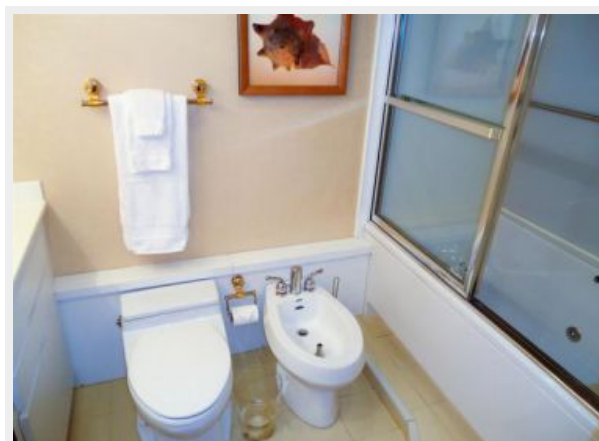
## Aft Deck



## Master Stateroom



## Master Head - Her's



## Master Stateroom



## VIP Stateroom



**Guest Stateroom****Office****Office - Converted to Guest Stateroom****Guest Head****Pilot House****Flybridge**



**Helm**



**Engine Room**



**Underway**



# CONTACTS

---

Andrey Shestakov, leading yacht broker of the sales department of Shestakov Yacht Sales Inc. Shestakov Yacht Sales Inc., the official representative of the Miami/Fort Lauderdale FL headquarters.

## Contact details

---

Email: **andrey@shestakovyachtsales.com**

Web: [shestakovyachtsales.com/en/](http://shestakovyachtsales.com/en/)

## Telephones

---

USA: **+1(954)274-4435**

## Office hours

---

Monday – Saturday: **9:00 - 21:00 EDT**

Sunday: **closed**

## Address

---



Harbour Towne Marina, 850 NE 3rd St,  
STE 213, Dania, FL 33004