

AQUAHOLIC — HATTERAS



Builder: HATTERAS

Year Built: 1995

Model: Sport Fisherman

Price: PRICE ON APPLICATION

Location: United States

LOA: 82' 0" (24.99m)

Beam: 22' 4" (6.81m)

Min Draft: 5' 6" (1.68m)

Our experienced yacht broker, Andrey Shestakov, will help you choose and buy a yacht that best suits your needs **Aquaholic — HATTERAS** from our catalogue. Presently, at Shestakov Yacht Sales Inc., we have a wide variety of yachts available on our sale's list. We also work in close contact with all the big yacht manufacturers from all over the world.

If you would like to buy a yacht **Aquaholic — HATTERAS** or would like help answering any questions concerning purchasing, selling or chartering a yacht, please call **+1(954)274-4435**

TABLE OF CONTENTS

TABLE OF CONTENTS	2
SPECIFICATIONS	6
Overview	6
Basic Information	6
Dimensions	6
Speed, Capacities and Weight	6
Accommodations	6
Hull and Deck Information	7
Engine Information	7
DETAILED INFORMATION	8
Accommodations	8
Vessel Walkthrough Highlights	8
Systems and Equipment Overview	8
Electrical Equipment	8
Engines	8
Skybridge Electronics	9
Enclosed Flybridge Electronics	9
Fishing Equipment	9
Deck Equipment	9
Remarks	9
Exclusions	9
Disclaimer	10
PHOTOS	11
Salon	11
Salon	11
Salon	11
Salon	11
Salon/Stairs to Enclosed Flybridge	11

Salon	11
Dinette	12
Dinette/Access to Day Head	12
Day Head	12
Galley	12
Galley	13
Master Stateroom	13
Master Stateroom	13
Master Stateroom	13
Master Stateroom	14
Master Stateroom	14
Master Head	14
Master Head	14
Laundry	15
Forward Guest Stateroom	15
Forward Guest Stateroom	15
Forward Guest Stateroom	15
Forward Guest Head	16
Forward Guest Stateroom	16
Forward Guest Head	16
Starboard Guest Stateroom	16
Starboard Guest Stateroom	17
Starboard Guest Stateroom	17
Starboard Guest Head	17
Starboard Guest Head	17
Port Guest Stateroom	18
Port Guest Stateroom	18
Port Guest Head	18
Port Guest Head	18

Crew Quarters	19
Crew Quarters	19
Crew Quarters	19
Crew Quarters	19
Crew Galley	20
Crew Head	20
Crew Head	20
Enclosed Flybridge	20
Enclosed Flybridge	21
Enclosed Flybridge	21
Enclosed Flybridge	21
Enclosed Flybridge	21
Enclosed Bridge-AFt Deck	21
Enclosed Bridge-AFt Deck	21
BBQ Grill, Full Controls	22
Skybridge	22
Skybridge	22
Skybridge	22
Skybridge	22
Skybridge	22
Salon Level-Aft Deck	23
Salon Level-Aft Deck	23
Salon Level-Aft Deck	23
Aft Deck/Cockpit	23
Cockpit	23
Cockpit	23
Cockpit	24
Cockpit	24
Cockpit	24

Bow	24
Bow	24
Engine Room	24
Engine Room	25
Engine Room	25
Engine Room	25
Engine Room	25
Engine Room	26
Engine Room	26
Engine Room	26
Aquaholic	26
Aquaholic	27
CONTACTS	28
Contact details	28
Telephones	28
Office hours	28
Address	28

SPECIFICATIONS

Overview

Aquaholic is a rare offering in today's market. She has only had 2 owners since new. The original owner kept her for over 10 years during which time , he repowered her with the MTU 16V2000's. Sold to her current owner in December of 2006, she was treated to a thorough refit at that time, and a new interior was installed. In 2013 a complete Awlgrip paint application was completed and new flexteak decks were installed. She has been maintained by a professional crew, and has enjoyed light family use.

Basic Information

Category: Sport Fisherman

Model Year: 1996

Year Built: 1995

Country: United States

Coast Guard #: 1037302

Vessel Top: Enclosed

Dimensions

LOA: 82' 0" (24.99m)

Beam: 22' 4" (6.81m)

Min Draft: 5' 6" (1.68m)

Speed, Capacities and Weight

Water Capacity: 450 Gallons

Holding Tank: 280 Gallons

Fuel Capacity: 3395 Gallons

Accommodations

Total Cabins: 4

Total Heads: 5

Crew Cabin: 1

Hull and Deck Information

Hull Material: Fiberglass

Engine Information

Engines: 2

Manufacturer: MTU

Model: 16V2000

Engine Type: Inboard

Fuel Type: Diesel

DETAILED INFORMATION

Accommodations

This semi custom enclosed bridge convertible, with a skybridge, combines the comforts of a motoryacht with the practicality of a yacht fisherman. Luxurious living spaces abound in her 4 stateroom, 4 head, day head layout. Separate crew accommodations for 2 as well as an abbreviated galley and private head with shower, is accessed from the cockpit.

Vessel Walkthrough Highlights

Full beam master with custom port lights, large tub/shower, and amazing storage is amidship. Forward stateroom features queen berth, starboard guest stateroom offers walkaround queen berth, port guest stateroom has twin lower berths that can convert to a queen berth. In the companionway is the laundry center with linen storage adjacent. Beneath the companionway sole is the storage area for dive tanks and compressors. The galley, dinette, and day head are forward on the main deck. The salon offers stairway access to the enclosed bridge, a huge seating/relaxing area and access through the large glass doors to a functional aft deck with fixed and movable seating and large dining table. Access to cockpit via port and starboard steps. The enclosed flybridge is accessed via the salon or aft deck. Features include electronically operated Stidd chairs, wet bar, two very comfortable L-shaped lounges, and a dining table. The upper aft deck features low profile refrigerator/freezer, BBQ grill, large seating area, and a full control station. Access to the skybridge is via a ladder to port. The skybridge provides yet another control station and large forward seating area. Access to the crew accommodations and the engine room is provided from the cockpit. This layout ensures privacy for the owners party.

Systems and Equipment Overview

Cruisair chilled water air conditioning system (updated 2014), Bauer/Brownie AM555 dive tank compressor, back up air compressor, Watermakers Inc. 2000 GPD watermaker, bow thruster with controls on skybridge, enclosed bridge, cockpit & aft deck of bridge, 4 helm control stations, Glenndenning cable masters.

Electrical Equipment

(2) 35 KW Onan generator, port generator had new block 1550 hours ago, starboard generator has 4700 hours.

Engines

(2) 16V2000 MTU diesels, 1800HP each, installed new in 2001. At this writing there are 3750

hours on the engines, and a total of 99,346 gallons of fuel have been used. The average fuel burn is 26.5 gallons per hour. The recommended 3000 hour service was performed in April of 2014.

Skybridge Electronics

Garmin 4100 GPS, Furuno FCV585 color sounder, distance depth finder, auto pilot remote, standard Horizon Gx2150 VHF radio

Enclosed Flybridge Electronics

Garmin 4010 GPS/Map/Depth finder, Furuno FR2110 72 mile color radar, Furuno 36 mile radar, Simrad auto pilot (2014), (2) Northstar 941X GPS, Datamarine digital depth finder, Furuno FCV1000 color sounder, Sirius SAT radio, (2) standard Horizon VHF radios, Samsung screen for engine room cameras, ships computer, Hatteras systems monitor, HD SAT TV system, with 8 receivers, SAT phone.

Fishing Equipment

Rupp outriggers, Murray fighting chair, cockpit controls, rod holders, live well, transom fish box, transom door with gate, tackle center, cockpit freezer, cockpit refrigerator, fresh and salt water wash downs, concealed sink.

Deck Equipment

17'6" Wahoo with VHF, depth finder, hydraulic steering added 2013, rewired 2013, repowered with 90hp Honda 2013, Marquipt 2000lb davit, bow pulpit, anchor windlass, 150# stainless Plowmaster anchor with 280' stainless chain, spare Danforth anchor, full length bow rail.

Remarks

Aquaholic is a rare offering in today's market. She has only had 2 owners since new. The original owner kept her for over 10 years during which time , he repowered her with the MTU 16V2000's. Sold to her current owner in December of 2006, she was treated to a thorough refit at that time, and a new interior was installed. In 2013 a complete Awlgrip paint application was completed and new flexteak decks were installed. She has been maintained by a professional crew, and has enjoyed light family use.

Exclusions

Owner's personal belongings.

Disclaimer

The Company offers the details of this vessel or yacht in good faith but cannot guarantee or warrant the accuracy of this information nor warrant the condition of the vessel. A buyer should instruct his representatives, agents, or his surveyors, to investigate such details as the buyer desires validated. This vessel or yacht is offered subject to prior sale, price change, or withdrawal without notice.

PHOTOS

Salon



Salon



Salon



Salon

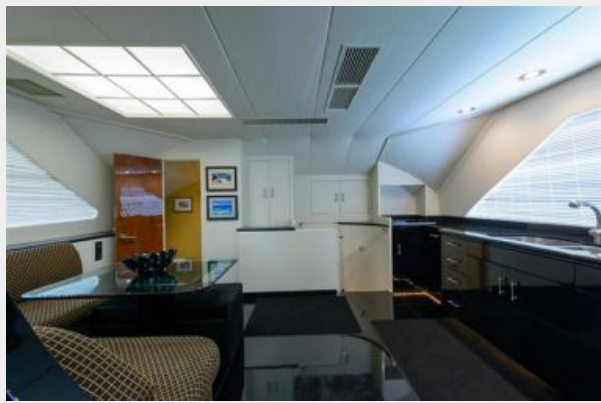


Salon/Stairs to Enclosed Flybridge

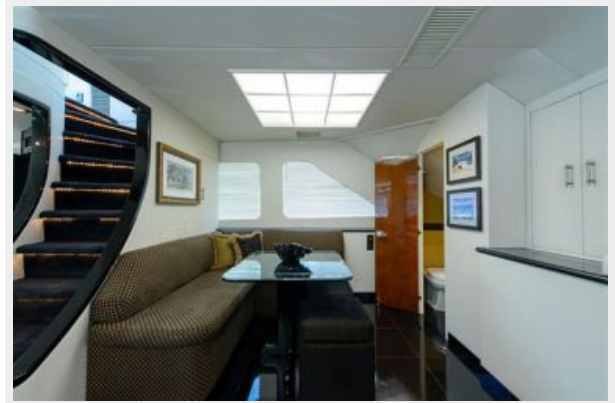
Salon



Dinette



Dinette/Access to Day Head



Day Head



Galley



Galley



Master Stateroom



Master Stateroom



Master Stateroom



Master Stateroom



Master Stateroom



Master Head



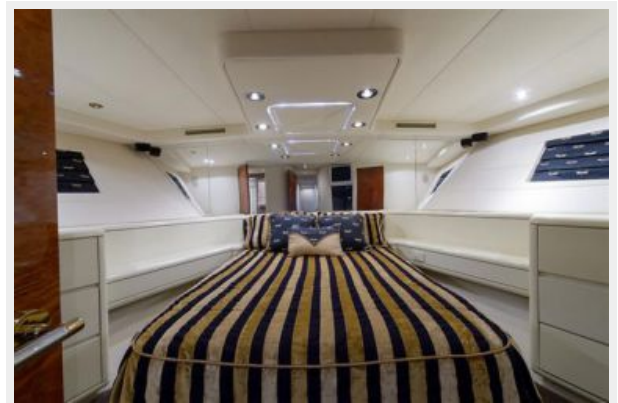
Master Head



Laundry



Forward Guest Stateroom



Forward Guest Stateroom



Forward Guest Stateroom



Forward Guest Stateroom



Forward Guest Head



Forward Guest Head



Starboard Guest Stateroom



Starboard Guest Stateroom



Starboard Guest Stateroom



Starboard Guest Head



Starboard Guest Head



Port Guest Stateroom



Port Guest Stateroom



Port Guest Head



Port Guest Head



Crew Quarters



Crew Quarters



Crew Quarters

Crew Quarters



Crew Galley



Crew Head



Crew Head



Enclosed Flybridge



Enclosed Flybridge



Enclosed Flybridge



Enclosed Flybridge



Enclosed Flybridge



Enclosed Bridge-Aft Deck



Enclosed Bridge-Aft Deck



BBQ Grill, Full Controls



Skybridge



Skybridge



Skybridge



Skybridge



Skybridge



Salon Level-Aft Deck



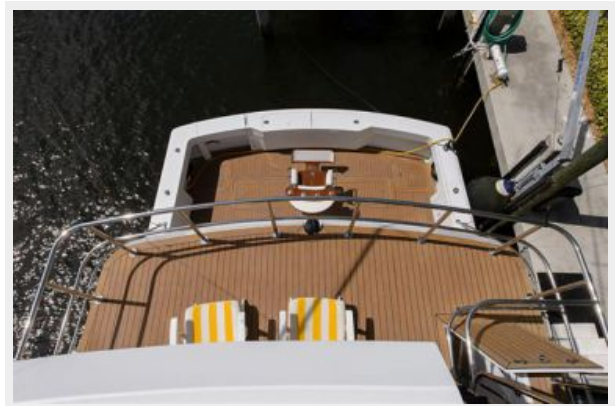
Salon Level-Aft Deck



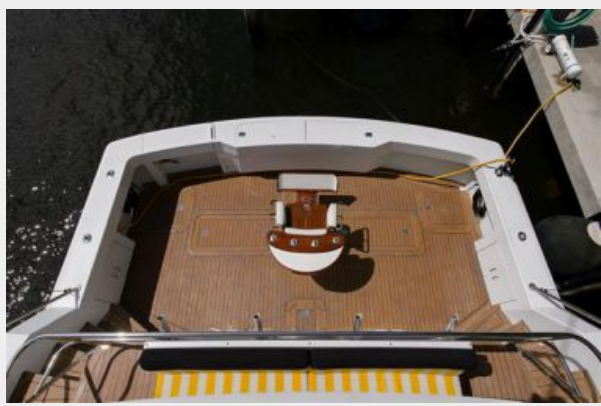
Salon Level-Aft Deck



Aft Deck/Cockpit



Cockpit



Cockpit



Cockpit



Cockpit



Cockpit



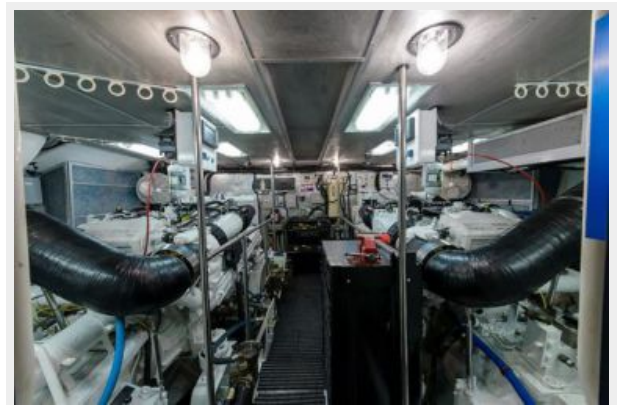
Bow



Bow



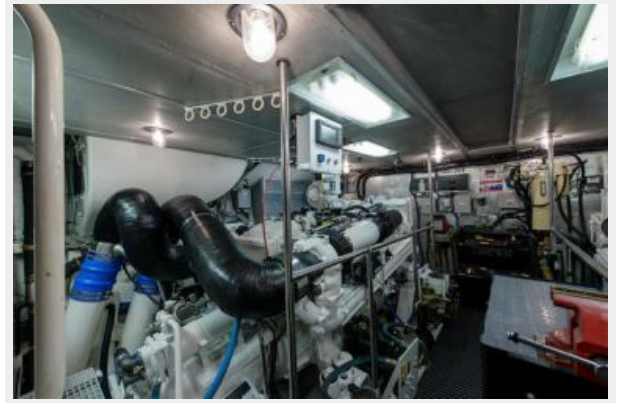
Engine Room



Engine Room



Engine Room



Engine Room



Engine Room



Engine Room



Engine Room



Engine Room



Aquaholic



Aquaholic



CONTACTS

Andrey Shestakov, leading yacht broker of the sales department of Shestakov Yacht Sales Inc. Shestakov Yacht Sales Inc., the official representative of the Miami/Fort Lauderdale FL headquarters.

Contact details

Email: andrey@shestakovyachtsales.com

Web: shestakovyachtsales.com/en/

Telephones

USA: +1(954)274-4435

Office hours

Monday – Saturday: **9:00 - 21:00** EDT

Sunday: **closed**

Address



Harbour Towne Marina, 850 NE 3rd St,
STE 213, Dania, FL 33004