

## AQUAHOLIC — HATTERAS



**Судостроитель:** HATTERAS

**Год постройки:** 1995

**Модель:** Катер для спортивной рыбалки

**Цена:** **ЦЕНА ЯХТЫ ПО ЗАПРОСУ**

**Местонахождение:** United States

**Длина общая:** 82' 0" (24.99m)

**Ширина:** 22' 4" (6.81m)

**Мин. осадка:** 5' 6" (1.68m)

Купить **Aquaholic — HATTERAS** а также выбрать подходящую вам яхту из нашего каталога яхт вам поможет опытный яхтенный брокер Андрей Шестаков. На сегодняшний день компания **Shestakov Yacht Sales Inc.** имеет большое количество яхт в собственном списке продаж, а также тесно сотрудничает со всеми крупными яхтенными производителями по всему миру.

Для того чтобы купить яхту **Aquaholic — HATTERAS** а также проконсультироваться по любому вопросу связанному с покупкой, продажей, чартером яхт позвоните по телефону **+7(918)465-66-44**.

# ОГЛАВЛЕНИЕ

ОГЛАВЛЕНИЕ	2
ХАРАКТЕРИСТИКИ	6
Обзор	6
Основная информация	6
Размеры	6
Скорость, вместимость и масса	6
Размещение	7
Корпус и палуба	7
Информация о двигателе	7
ПОДРОБНОЕ ОПИСАНИЕ	8
Accommodations	8
Vessel Walkthrough Highlights	8
Systems and Equipment Overview	8
Electrical Equipment	8
Engines	8
Skybridge Electronics	9
Enclosed Flybridge Electronics	9
Fishing Equipment	9
Deck Equipment	9
Remarks	9
Исключения	9
Отказ от ответственности	10
ФОТОГРАФИИ	11
Salon	11
Salon	11
Salon	11
Salon	11
Salon/Stairs to Enclosed Flybridge	11

Salon	11
Dinette	12
Dinette/Access to Day Head	12
Day Head	12
Galley	12
Galley	13
Master Stateroom	13
Master Stateroom	13
Master Stateroom	13
Master Stateroom	14
Master Stateroom	14
Master Head	14
Master Head	14
Laundry	15
Forward Guest Stateroom	15
Forward Guest Stateroom	15
Forward Guest Stateroom	15
Forward Guest Head	16
Forward Guest Stateroom	16
Forward Guest Head	16
Starboard Guest Stateroom	16
Starboard Guest Stateroom	17
Starboard Guest Stateroom	17
Starboard Guest Head	17
Starboard Guest Head	17
Port Guest Stateroom	18
Port Guest Stateroom	18
Port Guest Head	18
Port Guest Head	18

---

Crew Quarters	19
Crew Quarters	19
Crew Quarters	19
Crew Quarters	19
Crew Galley	20
Crew Head	20
Crew Head	20
Enclosed Flybridge	20
Enclosed Flybridge	21
Enclosed Flybridge	21
Enclosed Flybridge	21
Enclosed Flybridge	21
Enclosed Bridge-AFt Deck	21
Enclosed Bridge-AFt Deck	21
BBQ Grill, Full Controls	22
Skybridge	22
Skybridge	22
Skybridge	22
Skybridge	22
Skybridge	22
Salon Level-Aft Deck	23
Salon Level-Aft Deck	23
Salon Level-Aft Deck	23
Aft Deck/Cockpit	23
Cockpit	23
Cockpit	23
Cockpit	24
Cockpit	24
Cockpit	24

---

---

Bow	24
Bow	24
Engine Room	24
Engine Room	25
Engine Room	25
Engine Room	25
Engine Room	25
Engine Room	26
Engine Room	26
Engine Room	26
Aquaholic	26
Aquaholic	27
КОНТАКТЫ	28
Контактная информация	28
Телефоны	28
Время работы	28
Адрес	28

# ХАРАКТЕРИСТИКИ

## Обзор

Aquaholic is a rare offering in today's market. She has only had 2 owners since new. The original owner kept her for over 10 years during which time , he repowered her with the MTU 16V2000's. Sold to her current owner in December of 2006, she was treated to a thorough refit at that time, and a new interior was installed. In 2013 a complete Awlgrip paint application was completed and new flexteak decks were installed. She has been maintained by a professional crew, and has enjoyed light family use.

## Основная информация

**Тип судна:** Катер для спортивной рыбалки

**Модельный год:** 1996

**Год постройки:** 1995

**Страна:** United States

**Номер регистрации в береговой охране:** 1037302

**Верх:** Enclosed

## Размеры

**Длина общая:** 82' 0" (24.99m)

**Ширина:** 22' 4" (6.81m)

**Мин. осадка:** 5' 6" (1.68m)

## Скорость, вместимость и масса

**Вместимость воды:** 450 Gallons

**Вместимость сточного бака:** 280 Gallons

**Объем топливного бака:** 3395 Gallons

## Размещение

---

Всего кают: 4

Всего ком. состава: 5

Каюты экипажа: 1

## Корпус и палуба

---

Материал корпуса: Fiberglass

## Информация о двигателе

---

Двигатели: 2

Производитель: MTU

Модель: 16V2000

Тип двигателя: Inboard

Тип топлива: Diesel

---

# ПОДРОБНОЕ ОПИСАНИЕ

---

## Accommodations

---

This semi custom enclosed bridge convertible, with a skybridge, combines the comforts of a motoryacht with the practicality of a yacht fisherman. Luxurious living spaces abound in her 4 stateroom, 4 head, day head layout. Separate crew accommodations for 2 as well as an abbreviated galley and private head with shower, is accessed from the cockpit.

## Vessel Walkthrough Highlights

---

Full beam master with custom port lights, large tub/shower, and amazing storage is amidship. Forward stateroom features queen berth, starboard guest stateroom offers walkaround queen berth, port guest stateroom has twin lower berths that can convert to a queen berth. In the companionway is the laundry center with linen storage adjacent. Beneath the companionway sole is the storage area for dive tanks and compressors. The galley, dinette, and day head are forward on the main deck. The salon offers stairway access to the enclosed bridge, a huge seating/relaxing area and access through the large glass doors to a functional aft deck with fixed and movable seating and large dining table. Access to cockpit via port and starboard steps. The enclosed flybridge is accessed via the salon or aft deck. Features include electronically operated Stidd chairs, wet bar, two very comfortable L-shaped lounges, and a dining table. The upper aft deck features low profile refrigerator/freezer, BBQ grill, large seating area, and a full control station. Access to the skybridge is via a ladder to port. The skybridge provides yet another control station and large forward seating area. Access to the crew accommodations and the engine room is provided from the cockpit. This layout ensures privacy for the owners party.

## Systems and Equipment Overview

---

Cruisair chilled water air conditioning system (updated 2014), Bauer/Brownie AM555 dive tank compressor, back up air compressor, Watermakers Inc. 2000 GPD watermaker, bow thruster with controls on skybridge, enclosed bridge, cockpit & aft deck of bridge, 4 helm control stations, Glenndenning cable masters.

## Electrical Equipment

---

(2) 35 KW Onan generator, port generator had new block 1550 hours ago, starboard generator has 4700 hours.

## Engines

---

(2) 16V2000 MTU diesels, 1800HP each, installed new in 2001. At this writing there are 3750



hours on the engines, and a total of 99,346 gallons of fuel have been used. The average fuel burn is 26.5 gallons per hour. The recommended 3000 hour service was performed in April of 2014.

---

## Skybridge Electronics

---

Garmin 4100 GPS, Furuno FCV585 color sounder, distance depth finder, auto pilot remote, standard Horizon Gx2150 VHF radio

---

## Enclosed Flybridge Electronics

---

Garmin 4010 GPS/Map/Depth finder, Furuno FR2110 72 mile color radar, Furuno 36 mile radar, Simrad auto pilot (2014), (2) Northstar 941X GPS, Datamarine digital depth finder, Furuno FCV1000 color sounder, Sirius SAT radio, (2) standard Horizon VHF radios, Samsung screen for engine room cameras, ships computer, Hatteras systems monitor, HD SAT TV system, with 8 receivers, SAT phone.

---

## Fishing Equipment

---

Rupp outriggers, Murray fighting chair, cockpit controls, rod holders, live well, transom fish box, transom door with gate, tackle center, cockpit freezer, cockpit refrigerator, fresh and salt water wash downs, concealed sink.

---

## Deck Equipment

---

17'6" Wahoo with VHF, depth finder, hydraulic steering added 2013, rewired 2013, repowered with 90hp Honda 2013, Marquipt 2000lb davit, bow pulpit, anchor windlass, 150# stainless Plowmaster anchor with 280' stainless chain, spare Danforth anchor, full length bow rail.

---

## Remarks

---

Aquaholic is a rare offering in today's market. She has only had 2 owners since new. The original owner kept her for over 10 years during which time , he repowered her with the MTU 16V2000's. Sold to her current owner in December of 2006, she was treated to a thorough refit at that time, and a new interior was installed. In 2013 a complete Awlgrip paint application was completed and new flexteak decks were installed. She has been maintained by a professional crew, and has enjoyed light family use.

---

## Исключения

---

При продаже яхты исключаются личные вещи владельца.

## **Отказ от ответственности**

---

Компания предоставляет описание судна или яхты добросовестно, но не может гарантировать точность этой информации, а также не ручается за техническое состояние. Покупатель должен проинструктировать своих агентов или оценщиков исследовать представленную информацию более подробно, по собственному желанию. Продажа судна или яхты, изменение цены или снятие с продажи будет происходить без предварительного уведомления.

# ФОТОГРАФИИ

Salon



Salon



Salon



Salon

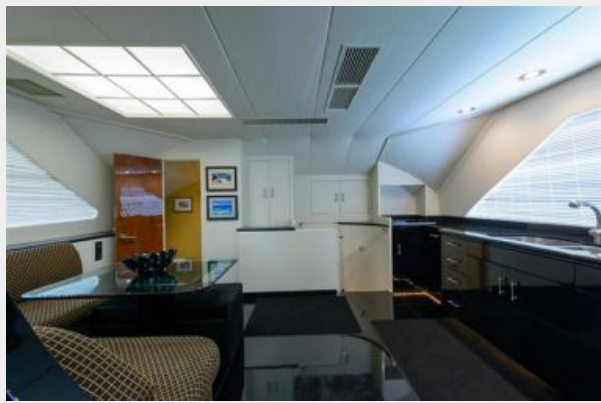


Salon/Stairs to Enclosed Flybridge

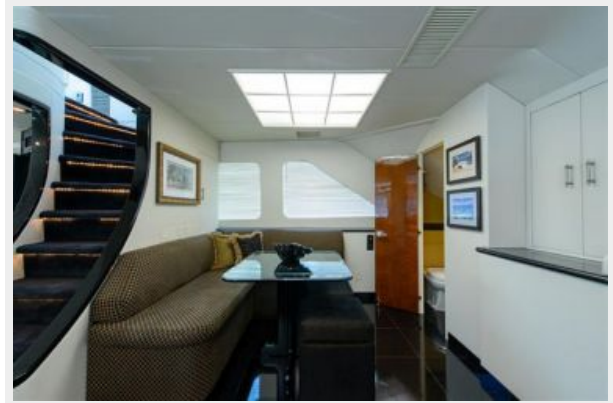
Salon



**Dinette**



**Dinette/Access to Day Head**



**Day Head**



**Galley**



**Galley**



**Master Stateroom**



**Master Stateroom**



**Master Stateroom**





**Master Stateroom**



**Master Stateroom**



**Master Head**



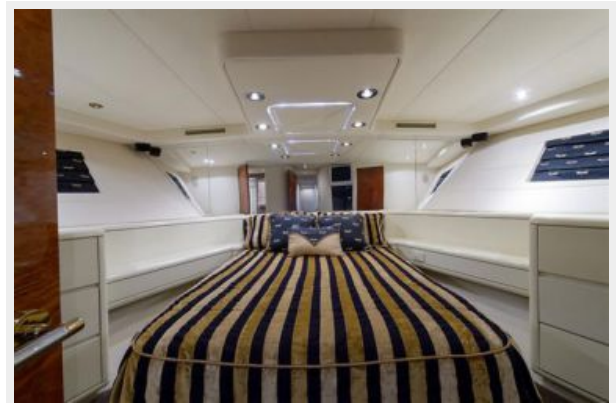
**Master Head**



**Laundry**



**Forward Guest Stateroom**



**Forward Guest Stateroom**



**Forward Guest Stateroom**



**Forward Guest Stateroom**



**Forward Guest Head**



**Forward Guest Head**



**Starboard Guest Stateroom**





### Starboard Guest Stateroom



### Starboard Guest Stateroom



### Starboard Guest Head



### Starboard Guest Head



**Port Guest Stateroom**



**Port Guest Stateroom**



**Port Guest Head**



**Port Guest Head**



**Crew Quarters**



**Crew Quarters**



**Crew Quarters**



**Crew Quarters**



**Crew Galley**



**Crew Head**



**Crew Head**



**Enclosed Flybridge**





**Enclosed Flybridge**



**Enclosed Flybridge**



**Enclosed Flybridge**



**Enclosed Flybridge**



**Enclosed Bridge-Aft Deck**



**Enclosed Bridge-Aft Deck**



**BBQ Grill, Full Controls**



**Skybridge**



**Skybridge**



**Skybridge**



**Skybridge**



**Skybridge**





Salon Level-Aft Deck



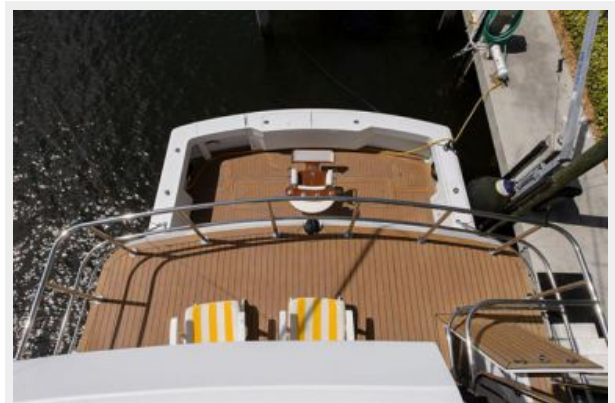
Salon Level-Aft Deck



Salon Level-Aft Deck



Aft Deck/Cockpit



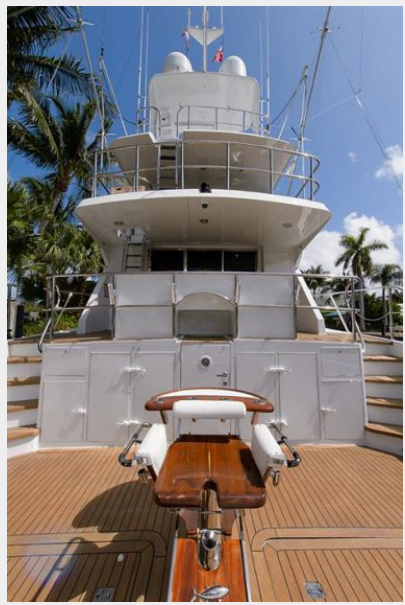
Cockpit



Cockpit



**Cockpit**



**Cockpit**



**Cockpit**



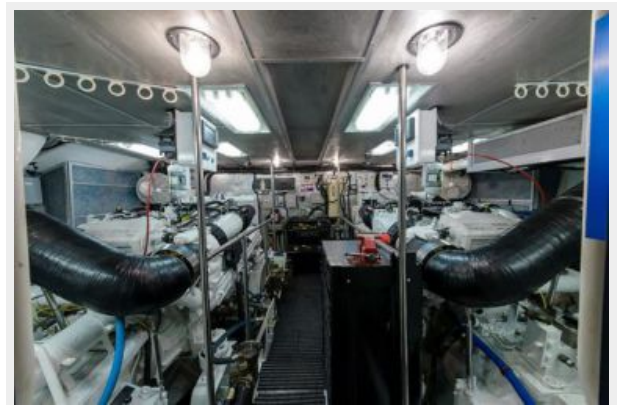
**Bow**



**Bow**



**Engine Room**

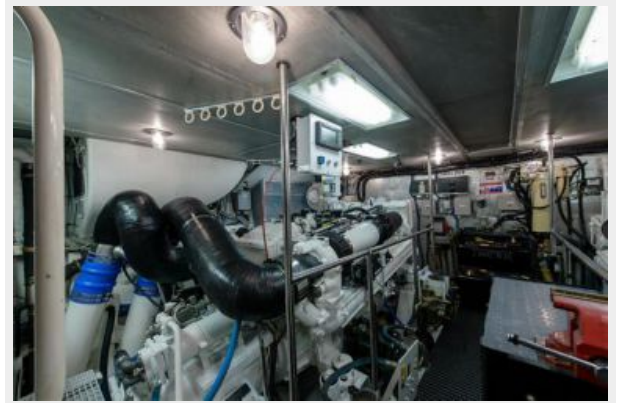




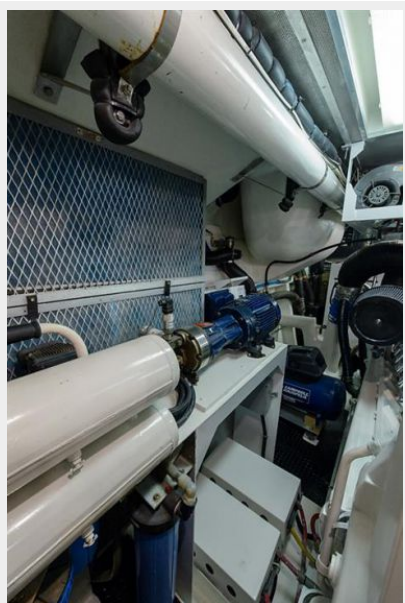
**Engine Room**



**Engine Room**



**Engine Room**



**Engine Room**



**Engine Room**



**Engine Room**



**Engine Room**



**Aquaholic**



## Aquaholic



# КОНТАКТЫ

---

Андрей Шестаков (Andrey Shestakov) – ведущий яхтенный брокер отдела продаж яхт и судов компании Shestakov Yacht Sales Inc. Официальный представитель Shestakov Yacht Sales Inc. для русскоговорящих клиентов в центральном офисе компании в Майами/Форт Лодердейл/Флорида/США.

## Контактная информация

---

Email: [andrey@shestakovyachtsales.com](mailto:andrey@shestakovyachtsales.com)

Web: [shestakovyachtsales.com](http://shestakovyachtsales.com)

## Телефоны

---

Краснодарский край: **+7(918)465-66-44**

США, Майами, Флорида: **+1(954)274-4435**

## Время работы

---

Понедельник – Суббота: **9:00 - 21:00**  
EDT

Воскресенье: **Закрито**

## Адрес

---



Harbour Towne Marina, 850 NE 3rd St,  
STE 213, Dania, FL 33004