

BEVERLY ANN — SABRELINE



Судостроитель: SABRELINE

Год постройки: 1997

Модель: Траулер

Цена: ЦЕНА ЯХТЫ ПО ЗАПРОСУ

Местонахождение: United States

Длина общая: 36' 0" (10.97m)

Ширина: 12' 6" (3.81m)

Мин. осадка: 3' 5" (1.04m)

Купить **Beverly Ann — SABRELINE** а также выбрать подходящую вам яхту из нашего каталога яхт вам поможет опытный яхтенный брокер Андрей Шестаков. На сегодняшний день компания **Shestakov Yacht Sales Inc.** имеет большое количество яхт в собственном списке продаж, а также тесно сотрудничает со всеми крупными яхтенными производителями по всему миру.

Для того чтобы купить яхту **Beverly Ann — SABRELINE** а также проконсультироваться по любому вопросу связанному с покупкой, продажей, чартером яхт позвоните по телефону **+7(918)465-66-44**.

ОГЛАВЛЕНИЕ

ОГЛАВЛЕНИЕ	2
ХАРАКТЕРИСТИКИ	5
Обзор	5
Основная информация	5
Размеры	5
Скорость, вместимость и масса	5
Размещение	5
Корпус и палуба	6
Информация о двигателе	6
ПОДРОБНОЕ ОПИСАНИЕ	7
Accommodations and Walk Through	7
Galley	7
Guest Stateroom Forward	7
Guest/Day Head	7
Lower Helm	8
Flybridge	8
Salon	9
Master Stateroom	9
Master Ensuite Head/Shower	10
Mechanical Equipment	10
Electrical System	11
Deck Equipment	11
Owner's Exclusions	11
Broker's Comments	12
Исключения	12
Отказ от ответственности	12
ФОТОГРАФИИ	13
Nautica RIB includes a Trailer	13

Salon Forward	13
Dinette to Starboard	13
Lower Helm with Deck Access	13
Lower Helm	13
Helm Instrumentation	13
Entrance to Guest Stateroom Forward	14
Guest Stateroom	14
Guest/Day Head	14
Guest Stateroom Aft	14
Salon Aft	14
Galley to Starboard	14
Galley Aft - Entrance to Master Stateroom	15
Comfortable Master Stateroom	15
MSR to Port	15
MSR with Ensuite Head/Separate Shower	15
MSR Head	15
MSR Entrance	15
MSR Shower	16
Starboard Aft Deck View	16
Flybridge Forward	16
Custom Helm Seat	16
Flybridge Helm	16
Flybridge Aft	16
Aft Deck View from Flybridge	17
Aft Deck - Chairs not included	17
Starboard Side Deck Aft	17
Ground Tackle	17
Flybridge View from Bow	18
Port Side Deck Aft	18

Stern View	18
Port Side Profile	18
Port Engine	18
Starboard Engine	18
Westerbeke Genset	19
Clean Engine Room	19
Bow View - Ready to Leave the Dock!	19
КОНТАКТЫ	20
Контактная информация	20
Телефоны	20
Время работы	20
Адрес	20

ХАРАКТЕРИСТИКИ

Обзор

The **Sabreline 36 Fast Trawler** is a wonderful Maine built cruiser that fits every need for coastal cruising. A two stateroom vessel with a shower and head forward, and a head with a separate stall shower aft and queen centerline bed. Galley is up with all necessary appliances, large salon area and plenty of light with the large opening windows all around. "**BEVERLY ANN**" has cruising speeds at 16 knots and tops out in the lows 20's. Her dark blue hull with Downeast lines combined with the quality of a **Sabreline** makes her all the more handsome. New bottom paint as of October 2014.

Основная информация

Тип судна: Траулер	Подкатегория: Aft Cabin
Модельный год: 1997	Год постройки: 1997
Страна: United States	Открытая палуба мостика: Да

Размеры

Длина общая: 36' 0" (10.97m)	Ширина: 12' 6" (3.81m)
Мин. осадка: 3' 5" (1.04m)	Трапы: 21' 0" (6.40m)

Скорость, вместимость и масса

Водоизмещение: 22000 Pounds	Вместимость воды: 225 Gallons
Вместимость сточного бака: 30 Gallons	Объем топливного бака: 300 Gallons

Размещение

Всего кают: 2	Всего ком. состава: 2
---------------	-----------------------

Корпус и палуба

Материал корпуса: Fiberglass

Информация о двигателе

Двигатели: 2

Производитель: Caterpillar

Модель: 3116 TA

Тип двигателя: Inboard

Тип топлива: Diesel

ПОДРОБНОЕ ОПИСАНИЕ

Accommodations and Walk Through

This little yacht has sleeping for 6 - 2 in the Master Stateroom on an island double, 2 at the Convertible Dinette in the Salon, and 2 in the forward berth. There are 2 full Heads, a mid-ship Galley and Salon with large dinette with seating on both the port and starboard sides. There is side deck entrance doors on both port and starboard. There are two steps on both side decks up to the truck cabin top, then on up to the Flybridge. The Flybridge easily seats eight with seating on both sides of a table and at the helm and crew custom pedestal chairs. There is a small cockpit aft deck, aft of the truck cabin with molded in swing down steps to the swim platform.

Galley

The "L" Galley is up at Salon level to starboard and aft with plenty of counter space and cabinet space below. There is another overhead cabinet for extra storage with the microwave below it on the countertop..

- Nova Koolupright refrigerator/freezer
12v/110v (New 2013)
- Princess 3 burner propane stove w/oven
- RivalMicrowave oven (New 2015 - Unused)
- Lawing Marble countertops in a pleasingdark bluefinish
- Double stainless steel sink
- Counter tops and faucets (2013)
- Hot and cold pressure water w/new Grohe faucet
- Top loading trash bin
- Xintex propane fume detector
- Weems & Plath brass tide clock

Guest Stateroom Forward

Down three steps from the Salon centerline is a large 2 person Stateroom with the day Head access within. It has lots of storage, hanging locker, good overhead clearance and good sized bunks with a filler to make a large double bed (2012). There is good natural lighting and ventilation with (2) opening ports and overhead hatch with screen. Teak and holly sole and cherry finish throughout.

Guest/Day Head

The Guest/Day Head is accessed from the Forward Stateroom and it has plenty of room and storage, stainless steel sink and ample counter space, It has a Raritan electric head that pumps

to the holding tank. It has a shower and teak grate for easy efficient draining and unlike some wet heads, this one works very well.

- Tank Watch
- Shower pump
- Blower
- 110v Duplex Outlet
- Mirror
- (2) 12v lights
- H/C water
- SS Sink, faucet and counter top New 2013

Lower Helm

There is a full lower helm with complete instrumentation and electronics for full command of the boat. This is great for very hot days and more importantly for cold & wet days. Visibility is very good. Note: the Garmin 7212 moves to either helm.

- Garmin 7212 touch screen GPS, Radar, Fish Finder (2012), aft camera
- Garmin GHC 10 Auto Pilot w/remote control (2012)
- B&G Network QUAD digital depth, speed
- ICom IC M127 VHF Radio
- B&G Network Quad
- Glendinning Synchronizer
- Sea Star hydraulic steering with tilt wheel SS destroyer style steering wheel
- Up/Down Windlass controls
- Dual cable shifter and throttle controls
- Richie Compass
- Trim Tab Controls
- Spotlight controls (Spotlight reported not working)
- Flip up Captain's Seat
- Tank Tender - 1 & 2 Fuel; 3 & 4 H2O
- (3) Handheld Fire Extinguishers
- 12v Outlet
- Panasonic AM/FM/CD player
- (3) Pantograph windshield wipers

Flybridge

A very large bridge for a boat this size, well laid out with lots of seating, adjustable height dining table and two HF helm chairs at the forward helm, bimini and 4-sided enclosure, mast that can be lowered for clearance to 16 ft with lowering the antennas and with the bimini down clearance to 13 ft, access is from the truck cabin top up three steps. Note: the Garmin 7212 moves from lower station to upper station.

- Garmin 7212 touch screen GPS, Radar, Fish Finder (2012), aft camera
- Garmin GHC 10 Auto Pilot w/remote control (2012)
- Garmin portable GPS Montana 6000 (2014)
- B&G Network QUAD digital depth, speed
- Garmin IC VHF Radio
- B&G Network Quad
- Glendinning Synchronizer
- Sea Star hydraulic steering with SS destroyer style steering wheel
- Up/Down Windlass controls
- Dual cable shifter and throttle controls
- Richie Compass
- (1) 20lb Propane Tank
- Fully equipped Ditch Bag includes EPIRB, portable VHF, strobe light, first aid kit, etc. (New 2014)
- Switlik Life Raft (needs re-certification)
- Trim Tab Controls
- Spotlight controls (Spotlight reported not working)
- Cushions new in 2012

Salon

The Salon is an all in one area with the Dinette and Galley and lower Helm, there is a door aft to port to go on deck, a door forward to starboard by the lower helm to go on deck. The lower helm is starboard forward and is a real helm with all controls, electronics and instrumentation, and is well laid out with great visibility. The portside L-shaped dinette easily seats four to a large table. The starboard side straight settee has two seats that slide towards the table for more comfortable seating at the table. The table rotates around 180 degrees and lowers down to fiddles to make a convertible berth with the filler foam stored under the L-shaped settee. Plenty of storage under both settees. There is a teak and holly sole and the entire Salon/Galley area is finished in lovely cherry wood. The window coverings are white wooden blinds and tasteful curtains. The cushions in the settee's were refinished with new foam and fabric two years ago with lots of cushioned support! The factory fabric ceiling headliner has been replaced with white painted bead board.

- 12v Overhead Light
- (2) Duplex 110v outlets
- (4) Opening Windows
- Dynex 21" Flat Screen TV with DVD player

Master Stateroom

The Master Stateroom is aft and down 3 steps from the Salon. It has an island double bed with

storage on both sides and an exit to the deck aft starboard. It has a hanging locker and a private ensuite Head with separate Stall Shower. This is a great Stateroom for this size boat; it has lots of natural lighting and good ventilation with opening ports and aft entry. It has a teak and holly sole with lovely cherry woodwork throughout.

- New foam custom hinging mattress for easy access to rudder tables. Mattress new in 2012.
- (6) 12v lights
- Teak & Holly sole
- Opening hatch with ladder to back deck (lots of air flow and light)
- Hanging cedar closet
- (2) Sliding door Cabinets
- Vanity Dressing Table
- (2) Drawers
- (2) 110v Duplex outlets
- Access to main battery switches
- (6) 12v lights
- Lift up stairs for aft Engine Room access

Master Ensuite Head/Shower

The Ensuite Head has its own storage and lots of it, a long counter and stainless steel sink, it has a large separate stall shower with a light and window for natural light and ventilation, it has a Raritan electric head which flows to the holding tank, for overboard discharge or deck pumpout. Counter top and faucet new 2013.

Mechanical Equipment

- Caterpillar 3116TA engines
- ZF IRM gears, 2.04:1
- 1-3/4" SS shafts
- 24 x 26 three-blade bronze props
- Racor 900 fuel/water separator filters for main engines
- Fuel Shut offs for Mains & Gen
- Racor 500 for Gen
- Bilge Blowers
- (3) Automatic Bilge Pumps
- Hydraulic wheel steering 2 stations
- (2) Air Conditioning Units 16K & 12K BTU
- Oil Transfer System
- Hydraulic Trim Tabs
- Glendinning Engine Synchronizer
- Electric Macerator overboard Discharge for Holding Tank when & where permissible
- Raw water pumps (new 2013)

Electrical System

- AC 110 / 240 Volt 60 AMP service shore power through (2) 30 amp cords
- (1) 50 amp to (2) 30 amp splitter
- AC 110 / 240 Volt Ship's Service
- Westerbeake Generator 8KW 72amps at 110 Volts 240 hours
- DC 12 Volt ships service from House Battery bank (4) new AGM Batteries
- New Pro-Nautic 60 Amp Automatic House Battery Charger (2014)
- Battery switches Parallel Switch at helm for emergency starting

Deck Equipment

- 35lb Plough Anchor and Anchor Davit with 200' chain
- Danforth anchor spare w/chain & rode
- Bow Pulpit & Rails
- Side Stanchions with Lifelines
- Pressure raw water Deck Wash Down System
- Nautica 2003 9'10" RIB Dinghy w/6hp 4-Cycle Honda Engine (new 2014), includes 2011 Continental Trailer
- Dinghy davits mounted on transom (2014)
- Edson Outboard Mount (2014)
- Manual OB Engine Lift on boom
- Swim Platform & Ladder, hot and cold shower (2015)
- Bimini Top & Flybridge Curtains
- Textalene Window Cover
- Teak step pads on flybridge and cabin sides
- (3) Windshield Wipers & Washers
- (2) Rod Holders
- (4) Large fenders & fender boards
- Muir Electric Windlass power up/down
- Navigation Lights
- Single Remote Guest Electric Search Light (reported not working)
- 6 Life Jackets
- 2 Custom premium Helm Seats on Bridge (2013)
- Flybridge Carpet (2013)
- Propane Gas BBQ Magma Grill
- Steadying sail on mast/boom on deck
- Storage in cockpit deck
- Hot/Cold Shower at transom
- (2) Spare propellers

Owner's Exclusions

- Owner's personal items and tools
- (2) Deck Chairs

Broker's Comments

BEVERLY ANN is a VERY CLEAN, well taken care of vessel. Her mechanicals and cosmetics have been lovingly looked after. She is ready to cruise at a moments notice. Worth Noting:

- (2) High end Helm Chairs in Flybridge - Very comfortable for those long cruises and just plain lounging on
- Very clear high quality Eisenglass 4 sided enclosed in flybridge
- Nice Nautica RIB inflatable with 4-stroke Honda engine for those jaunts to the beach and to town
- Garmin touch screen technology with charts from MD to the Islands - you will not have to spend any money upgrading electronics!
- Upgraded fabrics and foam on Salon Settees - very comfortable!
- Upgraded new MSR foam mattress - get your beauty rest!
- Steadying sail to aid in both underway and at rest
- Propane stove and oven - most desirable for the serious cruiser
- Large Magma grill at transom - let's face it, that's where most of the meals are cooked anyway.

All staging decorations are owned by the Listing Broker, Bill Watson with Bartram & Brakenhoff, and do not convey with vessel.

Исключения

При продаже яхты исключаются личные вещи владельца.

Отказ от ответственности

Компания предоставляет описание судна или яхты добросовестно, но не может гарантировать точность этой информации, а также не ручается за техническое состояние. Покупатель должен проинструктировать своих агентов или оценщиков исследовать представленную информацию более подробно, по собственному желанию. Продажа судна или яхты, изменение цены или снятие с продажи будет происходить без предварительного уведомления.

ФОТОГРАФИИ

Nautica RIB includes a Trailer



Salon Forward



Dinette to Starboard



Lower Helm with Deck Access



Lower Helm



Helm Instrumentation



Entrance to Guest Stateroom Forward



Guest Stateroom



Guest/Day Head



Guest Stateroom Aft



Salon Aft



Galley to Starboard



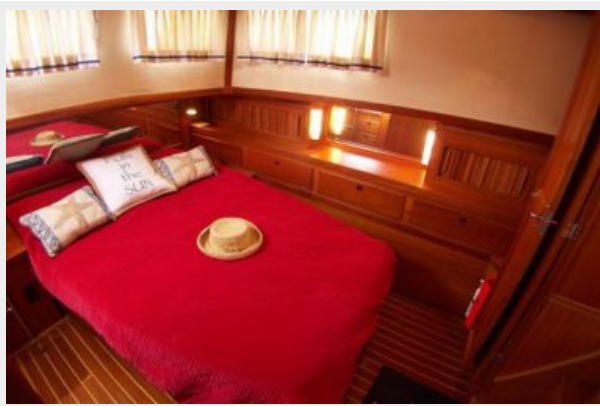
Galley Aft - Entrance to Master Stateroom



Comfortable Master Stateroom



MSR to Port



MSR with Ensuite Head/Separate Shower



MSR Head



MSR Entrance



MSR Shower



Starboard Aft Deck View



Flybridge Forward



Custom Helm Seat



Flybridge Helm



Flybridge Aft



Aft Deck View from Flybridge



Aft Deck - Chairs not included



Starboard Side Deck Aft



Ground Tackle



Flybridge View from Bow



Port Side Deck Aft



Stern View



Port Side Profile



Port Engine



Starboard Engine



Westerbeke Genset



Clean Engine Room



Bow View - Ready to Leave the Dock!



КОНТАКТЫ

Андрей Шестаков (Andrey Shestakov) – ведущий яхтенный брокер отдела продаж яхт и судов компании Shestakov Yacht Sales Inc. Официальный представитель Shestakov Yacht Sales Inc. для русскоговорящих клиентов в центральном офисе компании в Майами/Форт Лодердейл/Флорида/США.

Контактная информация

Email: andrey@shestakovyachtsales.com

Web: shestakovyachtsales.com

Телефоны

Краснодарский край: **+7(918)465-66-44**

США, Майами, Флорида: **+1(954)274-4435**

Время работы

Понедельник – Суббота: **9:00 - 21:00**
EDT

Воскресенье: **Закрето**

Адрес



Harbour Towne Marina, 850 NE 3rd St,
STE 213, Dania, FL 33004