

COCOON — HATTERAS



Судостроитель: HATTERAS

Год постройки: 1989

Модель: Катер для спортивной рыбалки

Цена: **ЦЕНА ЯХТЫ ПО ЗАПРОСУ**

Местонахождение: United States

Длина общая: 52' 0" (15.85m)

Ширина: 16' 7" (5.05m)

Мин. осадка: 5' 0" (1.52m)

Крейс. скорость: 25 Kts. (29 MPH)

Макс. скорость: 30 Kts. (35 MPH)

Купить **Cocoon — HATTERAS** а также выбрать подходящую вам яхту из нашего каталога яхт вам поможет опытный яхтенный брокер Андрей Шестаков. На сегодняшний день компания **Shestakov Yacht Sales Inc.** имеет большое количество яхт в собственном списке продаж, а также тесно сотрудничает со всеми крупными яхтенными производителями по всему миру.

Для того чтобы купить яхту **Cocoon — HATTERAS** а также проконсультироваться по любому вопросу связанному с покупкой, продажей, чартером яхт позвоните по телефону **+7(918)465-66-44**.

ОГЛАВЛЕНИЕ

ОГЛАВЛЕНИЕ	2
ХАРАКТЕРИСТИКИ	4
Основная информация	4
Размеры	4
Скорость, вместимость и масса	4
Размещение	4
Корпус и палуба	4
Информация о двигателе	5
ПОДРОБНОЕ ОПИСАНИЕ	6
Vessel Description	6
Исключения	16
Отказ от ответственности	16
ФОТОГРАФИИ	18
Aft Profile	18
Starboard Profile	18
Fore Deck & Tender	18
Cockpit	18
Cockpit	18
Flybridge Helm	18
Flybridge Helm	19
Bridge Seating	19
Salon	19
Salon	19
Galley	19
Galley	19
Dinette	20
Master Stateroom	20
Master Head	20

Forward Guest Stateroom	20
Guest Head	21
Guest Head	21
Port Guest Stateroom	21
Port Guest Stateroom	21
Engine Room	22
Engine Room	22
Engine Room	22
Engine Room	22
Engine Room	22
Engine Room	22
Engine Room	22
КОНТАКТЫ	23
Контактная информация	23
Телефоны	23
Время работы	23
Адрес	23

ХАРАКТЕРИСТИКИ

Основная информация

Тип судна: Катер для спортивной рыбалки

Подкатегория: Катер для спортивной рыбалки

Модельный год: 1989

Год постройки: 1989

Страна: United States

Размеры

Длина общая: 52' 0" (15.85m)

Ширина: 16' 7" (5.05m)

Мин. осадка: 5' 0" (1.52m)

Скорость, вместимость и масса

Крейс. скорость: 25 Kts. (29 MPH)

Макс. скорость: 30 Kts. (35 MPH)

Водоизмещение: 56000 Pounds

Вместимость воды: 190 Gallons

Объем топливного бака: 1068 Gallons

Размещение

Всего кают: 3

Всего ком. состава: 2

Корпус и палуба

Материал корпуса: Fiberglass

Информация о двигателе

Производитель: MAN

Модель: Common Rail

Тип двигателя: Inboard

Тип топлива: Diesel

ПОДРОБНОЕ ОПИСАНИЕ

Vessel Description

COCOON is a very special opportunity to own a “one-of-a-kind” 52’ Hatteras Convertible that has been continuously updated by a knowledgeable owner. She was purchased by the current/second owner in 1993 and has been “shed-kept” and impeccably maintained. COCOON offers the preferred 3-stateroom, galley-up layout.

The upgrade list is very extensive. In 2005, COCOON received the following: new 900 HP Common Rail MAN engines, NEW Northern Lights Generator (21.5 KW), and countless interior upgrades (new U-LINE Refrigeration, new countertops, new cook top, Clear Ice Maker, etc.).

COCOON holds 1,000 plus gallons of fuel and will cruise comfortably at 25 knots burning 65 GPH. The top end speed is 30 knots!

Call for additional details and to set up a viewing appointment. COCOON is an incredible value and will be on display at the 2015 Palm Beach Boat Show!

Salon

- L-Shaped Salon Sofa with storage compartments underneath
- Accent Pillows
- Teak Table
- Salon Barrel Chair
- Entertainment Center
- Dell Flatscreen Television, 30”
- Teak Trim Throughout
- BOSE Speaker System
- Window Blinds
- Window Valances & Lambrequins Tastefully decorated
- Vinyl Headliner
- Overhead, centerline grab rail
- Fire Extinguisher
- 120-volt Outlets

- Bilge Pump Visual Indicator Panel (to port)
- ICOM VHF (IC-M59)
- AC & DC Main Distribution Panels
- SAT Television

Galley & Dinette

- U-Shaped Galley to Starboard
- U-LINE Sub-Zero Refrigerators/Freezer (**New 2005**)
- SHARP Convection Microwave Oven
- GAGGENAU Two-Burner Cook-top (**New 2005**)
- GROHE Sink Faucet & Fixtures (**New 2005**)
- ISOTHERM Icemaker (**New 2009**)
- Corian Countertops (**New 2005**)
- Dell Flatscreen Television, 30"
- Storage Cabinets/Drawers Below Counter-top
- Storage Drawers to Starboard
- Amtico Galley Sole (**New 2005**)
- Teak Trim
- 120-volt Outlets
- Overhead Lighting
- Window Blinds
- Vinyl Headliner
- L-Shaped Dinette Seating with storage below (to port)
- Dinette Table with Corian Counter-top
- Boston Shipstrike Clock
- Ample Drawer Storage throughout Galley
- Entertainment Center

- Kenwood Disc Player
- Bluetooth Capability
- Stereo Volume Controls
- Toshiba DVD/VCR Player

Companionway

- 4 steps with storage below
- Solid Teak Doors and Trim Into Staterooms
- 24-volt Lighting
- Vinyl Headliner
- Access To Guest Head
- Access Panel to Fresh Water Pump Under Steps
- Access Panels Behind Galley and Entertainment System with storage space
- Outlets

Master Stateroom

- Located to Starboard
- Queen Berth with Comforter & Pillow Shams
- Storage Drawers Beneath Berth (2)
- Built-In Bedside Counters (port & starboard)
- Reading Lamps (2)
- 15" Samsung Flatscreen Television
- Lighted Hanging Locker
- Teak Trim
- Carpeting, updated in 2005
- Opening Port-light with Valance & Privacy Curtain
- Overhead Lighting
- 120-volt Outlets

- CruisAir Display
- En-Suite Head
- Fire Extinguisher
- Vinyl Headliner
- Pioneer FM/AM/CD Player

Master Stateroom Head

- Vanity with Porcelain Sink and Storage Locker Below
- MOEN Sink Faucet
- Medicine Cabinet with Mirrored Front
- Sea Land VAC-U-FLUSH Head System
- Walk-in Stall Shower with Hinged Glass Door
- Vent Fan
- Carpeting
- Overhead Vanity Light Fixture
- 120-volt Outlet
- Forward Storage Locker
- Towel Racks
- Holding Tank Monitor

Port Guest Stateroom

- Upper and Lower Berths with Comforters and Pillow Shams
- Storage Drawers Beneath Lower Berth (2)
- Built-In Bedside Table with 2 Drawers
- Lighted Hanging Locker
- Reading Lamps (2)
- 120-volt Outlets
- Opening Port with Privacy Curtain & Valance

- Private Access To Guest Head
- Carpeting, updated in 2005
- Vinyl Headliner
- Fire Extinguisher
- CruisAir Display
- Teak Trim
- Speakers
- Rod Storage Underneath Upper Berth

Forward Guest Stateroom

- Upper & Lower Berths with Comforters and Pillow Shams
- Storage Locker with Sliding Front
- Lower Storage Drawers and Cabinets
- Port & Starboard Lighted Hanging Closets
- CruisAir Display
- Private Access To Head
- Carpeting, updated in 2005
- Bilge Access Hatch
- Anchor Locker Access
- Vinyl Headliner
- 120-volt Outlets
- Reading Lights (2)
- Large Overhead Tinted Hatch with Hinged Screen
- Teak trim
- Fire Extinguisher
- Custom Valances
- Frigidaire Washer & Dryer

- Rod Storage Overhead and below Upper Berth

Guest Head

- Vanity with Sink & Storage Locker Below
- Access from Companionway
- MOEN Faucet
- Medicine Cabinet with Mirrored Front
- Sea Land VAC-U-FLUSH Head System
- Walk-in Stall Shower with Hinged Glass Door
- Shower Sump for Both Guest and Master Head
- Overhead Vanity Light Fixture
- 120-volt Outlet
- Opening Port-light
- Carpeted, updated in 2005
- Towel Racks
- Vent Fan
- Holding Tank Monitor

Flybridge & Helm Area

- Flybridge Access Ladder (to starboard)
- Twin Pedestal Helm Chairs with Footrests
- (3) Sided Strataglass Enclosure (**New 2014**)
- Overhead Electronics Box
- L-Shaped Seating To Port with Removable Cushions & Storage Beneath
- Starboard Seating with Removable Cushions and Rod Storage Beneath
- Helm Cover
- Hard Top Lighting
- Stereo Speakers

- Storage Locker Forward
- AMEREX Fire Extinguisher
- Aft Stainless Steel Handrail
- Updated MAN Electronic Controls (**New 2005**)
- Bilge Pump Switches
- Helm Storage throughout
- SONY Stereo System
- (2) Aft Spreader Hard Top Lights
- Shakespeare Antennas (4)
- SS Wheel
- SHARP Television mounted in Forward Storage Door
- BUELL Air Horns (2)
- Cup Holders
- 24-volt DC Receptacle
- (2) SEATEL Satellite Domes (1 dummy)
- Fresh Water Wash Down

Flybridge Electronics

- (2) Furuno NavNET 3D Multi-function Displays (**New 2010**)
- Furuno Open-Array Radar (12 KW, 72-mile range)
- Northstar 6100i
- ICOM VHF (IC-M604)
- Robertson Autopilot (AP200DL)
- RITCHIE Compass
- SAT Television
- EPIRB
- SONY Stereo System

- ACR Spotlight
- ICOM VHF (IC-M402)
- DataMarine Depth Gauge
- Dytek Water Temperature Gauge
- MAN Digital Gauges (**New 2005**)
- Sirius Weather

Cockpit

- Cockpit Engine Controls (Recessed in compartment)
- Transom Door with Lift Gate
- Custom Cockpit step/storage/ice boxes (port & starboard sides)
- Cockpit Coaming Bolsters (**New 2014**)
- Recessed Bait Well in Port Cockpit Hatch
- Cockpit Freezer to Starboard
- Bait Prep Sink with Faucet
- Ice Chipper
- Tackle Locker with (4) Drawers and (4) Shelves
- Recessed, Insulated Fish Box with Pump
- (2) In-Deck, Lazarette Access Hatches (storage, dive tank holders, etc.)
- Fighting Chair with Bluewater Rocket Launcher
- Port & Starboard Shore Power Inlets
- 50' 240-volt/50amp Shore Power Cable
- Hubbell Phone, TV Connection
- Under Gunwale Stern Cleats with Dual Hawse Pipes
- 12-Volt Electric Reel Outlets (2)
- Transom Mounted Cockpit Scuppers
- Courtesy Lighting under Gunnels

- Overhead Flood Lights
- Stereo Speakers
- Engine Access Hatch
- Dockside Water Inlet
- White Full Panel Cockpit Sunshade
- Fresh and Raw Water Washdown
- Gunnel Rod Holders (6)
- Sea Vision Underwater lights (3)
- Cockpit Rod Holders, sides of house (4 total)

Hull & Deck Equipment

- Marquipt Davit for 13' Boston Whaler with 50hp Mercury (**tender included with sale**)
- Bow Pulpit with Stainless Steel Anchor Roller
- Danforth Anchor
- Dual Anchor Rodes
- Stainless Steel Bow Rail
- Stainless Steel Rub Rail
- Windlass System with Foot Switch
- Tinted Hatch Covers
- BUELL Air Horns (2)
- Anchor Light
- Sea Vision Underwater lights (3)
- Recessed Navigation Lights
- ACR Spotlight
- House Grab Rails
- Bow Cleats
- Fore and Aft Spring Cleats

- Fuel & Water Fills
- Antenna Extensions with Standoffs
- Pipewelders Outriggers (36') with Center Rigger
- Penn Flybridge Teaser Reels (2)
- Transom Boarding Steps

Engine Room & Mechanical Equipment

- 900 HP Common Rail MAN Engines with electronic controls (**New 2005**)
- ZF Transmissions
- Manual back-up gauges in engine room
- Dripless Shaft Logs
- 4-Blade Propellers
- Oil Change System For Main Engines & Generator
- Fuel priming pumps
- (4) CruisAir Reverse Cycle Air Conditioning Systems
- Watermakers, Inc. Water Maker
- Halon Automatic Engine Room Fire Extinguishing System
- Racor Model 1000MA Primary Dual Fuel Filters with Gauges
- Racor Model 500FG Primary Generator Fuel Filter
- High Speed Sea Water Strainers Added For Main Engines
- High Water Alarms
- 120-volt GFCI Outlets In Engine Room
- Engine Room Lighting
- Dripless Shaft Seals
- Engine Room Blowers
- Trim Tabs
- Fuel Gauge Dip Sticks Mounted On Tanks

- Fiberglass Battery Boxes
- (4) 8-D Batteries (**New 2014**)
- 12-Volt Inverter
- Fresh Water Outlet
- Updated Fluorescent Lighting
- Ice Bonics Ice Chipper
- Engine Block Heaters
- Mirrored Ceiling

Electrical

- Northern Lights Generator 21.5 KW (**New 2006**)
- Additional Westerbeke Generator 7.6 KW
- 50-amp Shore Power Service
- Hubbell 50-amp Cable
- 12-volt DC Service
- Salon AC/DC Main Control Panel
- Engine Room Junction Box
- (4) 8-D Batteries (**New 2014**)
- Sentry Battery Charger
- GFCI Outlets
- Redundant 12-volt & 24-volt Systems

Исключения

При продаже яхты исключаются личные вещи владельца.

Отказ от ответственности

Компания предоставляет описание судна или яхты добросовестно, но не может гарантировать точность этой информации, а также не ручается за техническое

состояние. Покупатель должен проинструктировать своих агентов или оценщиков исследовать представленную информацию более подробно, по собственному желанию. Продажа судна или яхты, изменение цены или снятие с продажи будет происходить без предварительного уведомления.

ФОТОГРАФИИ

Starboard Profile



Aft Profile



Fore Deck & Tender



Cockpit



Сockpit



Flybridge Helm



Flybridge Helm



Bridge Seating



Salon



Salon



Galley



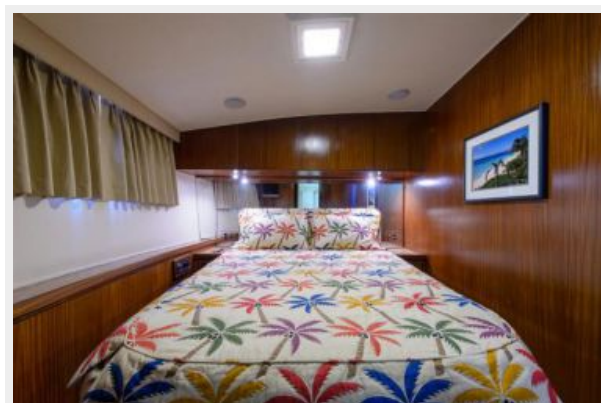
Galley



Dinette



Master Stateroom



Master Head



Forward Guest Stateroom



Guest Head



Guest Head



Port Guest Stateroom



Port Guest Stateroom



Engine Room



Engine Room



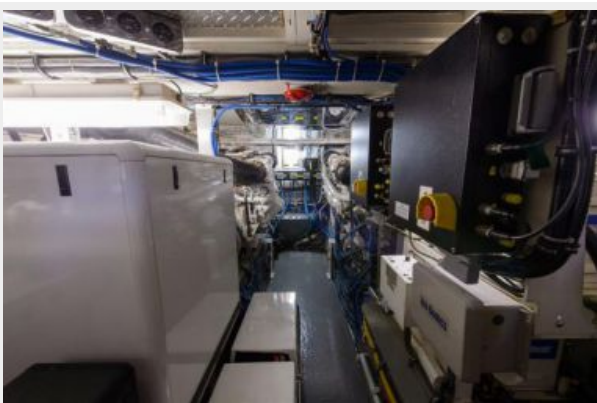
Engine Room



Engine Room



Engine Room



Engine Room



КОНТАКТЫ

Андрей Шестаков (Andrey Shestakov) – ведущий яхтенный брокер отдела продаж яхт и судов компании Shestakov Yacht Sales Inc. Официальный представитель Shestakov Yacht Sales Inc. для русскоговорящих клиентов в центральном офисе компании в Майами/Форт Лодердейл/Флорида/США.

Контактная информация

Email: andrey@shestakovyachtsales.com

Web: shestakovyachtsales.com

Телефоны

Краснодарский край: **+7(918)465-66-44**

США, Майами, Флорида: **+1(954)274-4435**

Время работы

Понедельник – Суббота: **9:00 - 21:00**
EDT

Воскресенье: **Закрето**

Адрес



Harbour Towne Marina, 850 NE 3rd St,
STE 213, Dania, FL 33004