

## TRAVELLER — HATTERAS



**Builder:** HATTERAS

**Year Built:** 2006

**Model:** Sport Fisherman

**Price:** PRICE ON APPLICATION

**Location:** United States

**LOA:** 54' 0" (16.46m)

**Beam:** 17' 3" (5.26m)

**Max Draft:** 4' 2" (1.27m)

Our experienced yacht broker, Andrey Shestakov, will help you choose and buy a yacht that best suits your needs **TRAVELLER — HATTERAS** from our catalogue. Presently, at Shestakov Yacht Sales Inc., we have a wide variety of yachts available on our sale's list. We also work in close contact with all the big yacht manufacturers from all over the world.

If you would like to buy a yacht **TRAVELLER — HATTERAS** or would like help answering any questions concerning purchasing, selling or chartering a yacht, please call **+1(954)274-4435**

# TABLE OF CONTENTS

TABLE OF CONTENTS	2
SPECIFICATIONS	4
Overview	4
Basic Information	4
Dimensions	4
Speed, Capacities and Weight	4
Accommodations	4
Hull and Deck Information	5
Engine Information	5
DETAILED INFORMATION	6
Brief Overview	6
Cockpit	6
Salon	7
Galley	8
Companionway	8
Master Stateroom	8
Master Head	9
Guest Stateroom Starboard	10
VIP Stateroom	10
Guest Head	11
Fly Bridge	11
Tuna Tower	12
Engines & Bilge	12
Electrical System	13
Exterior Finish/ Construction	13
Exclusions	14
Disclaimer	14
PHOTOS	15

---

CONTACTS	25
Contact details	25
Telephones	25
Office hours	25
Address	25

---

# SPECIFICATIONS

---

## Overview

---

Traveller- 54' Hatteras 2006 is in great condition. She is equipped well w/ ice chipper, water maker, C-32 Engines. Please call or email for additional information. She will not disappoint. Two Boat Owner!!!

## Basic Information

---

**Category:** Sport Fisherman

**Sub Category:** Convertible

**Model Year:** 2006

**Year Built:** 2006

**Country:** United States

**Vessel Top:** Hardtop W/Tower

**Fly Bridge:** Yes

**Cockpit:** Yes

## Dimensions

---

**LOA:** 54' 0" (16.46m)

**Beam:** 17' 3" (5.26m)

**Max Draft:** 4' 2" (1.27m)

**Clearance:** 13' 10" (4.22m)

## Speed, Capacities and Weight

---

**Water Capacity:** 192 Gallons

**Holding Tank:** 91 Gallons

**Fuel Capacity:** 1250 Gallons

## Accommodations

---

**Total Cabins:** 3

**Total Heads:** 2

---

## Hull and Deck Information

---

**Hull Material:** Fiberglass

---

## Engine Information

---

**Engines:** 2

**Manufacturer:** Caterpillar

**Model:** C-32

**Engine Type:** Inboard

---

# DETAILED INFORMATION

---

## Brief Overview

---

The Hatteras 54 Convertible is designed specifically to deliver a smooth ride and excellent handling while operating at high speed. The convexity in the hull bottom helps make this hull immensely strong. The slight outward curvature (viewed from keel to chine) reduces impact accelerations and contributes to an incredibly smooth head-sea ride. The 54 is designed for serious sportfishing. The cockpit boasts a bait and tackle center with sink, cutting board and tackle drawers; a bait freezer; storage console with drawers, four rod holders; a removable, full-size in-deck fish box with macerator and an amply proportioned transom door. Inside, you will find a nice L-shaped recovered leather couch to port. The Galley is forward of L-shaped couch and is appointed with nice granite counter tops, plenty of storage, & all the amenities for cooking. Across to starboard is a nice dinette, TV & entertainment center is housed at Dinette. If you continue forward down companionway the Master Stateroom is to port w/ queen sized mattress & en-suite head. Across from master is guest stateroom with side by side berths and there is access to guest head with in the stateroom. All the way forward is another guest stateroom with bunks, TV, and access to guest head.

## Cockpit

---

The cockpit boasts 149 square feet of open space where every element and dimension has a purpose. Fishing amenities include a bait and tackle center with sink, cutting board and tackle drawers; a bait freezer; storage console with drawers, four rod holders; a removable, full sized (80-inch) in-deck fish box with macerator and an amply proportioned transom door.

This cockpit also features awesome storage. Note the cleverly designed chill box under the steps and the insulated storage bin below the flybridge ladder. In addition, storage lockers with hinged doors are located below the port and starboard cockpit coamings. Other standard features include full-length toe kicks with foot pedal access to the cabinets and seawater and freshwater washdowns.

- Port & starboard hatches to lazarette and fuel tank connections
- Seawater and freshwater wash down outlets with patented quick disconnect
- Standard size bait freezer (center)
- Deep storage tub plumed for Eskimo Ice Maker (port)
- Removable 80" fish box with macerator, flush in deck. Alos, plumed for Eskimo Ice Chipper
- DC overhead lights under flybridge overhang
- Varnished Release Fighting Chair
- New Bluewater fighting chair w/ rocket launcher and drawer
- Stereo speakers
- Polished stainless steel rod holders flush mounted (4)
- Rod holders in gunnels

- Single (50) amp power cord on Glendinning power reel
- Gaff storage
- ISO standard scuppers in cockpit and cockpit hatches
- Polished anodized aluminum ladder to flybridge with acrylic steps
- Transom door
- Shore water connection with pressure reducing valve
- Bait & tackle center with sink, faucet, cutting board and tackle drawers
- Door and hatch with chrome plated brass lock to engine compartment
- Telephone CATV inlet
- Gaff storage port and starboard
- Cockpit lights
- Top mounted hauser pipes
- Large fish box with mascerator
- Ice drink box
- Eskimo ice chipper 600 lbs a day that dumps in port side bulkhead tub, next to cockpit freezer
- Extra rod holders in wing boards
- Port and starboard storage boxes
- Transom door
- Livewell

---

## Salon

---

Entering up into the salon through the cockpit door, she is tastefully decorated in high gloss cherry cabinetry. L-Shaped couch to port (just recovered) and luxurious light tan carpet to accent (full carpet runners) and open up the room. With a U-line ice maker starboard for your guests and a 32" flat screen TV, cold drinks and good times are just a step away after a hot day catching the big one.

- Sharp 32" flat screen TV
- Ice maker
- Finished wood bulkheads
- Fluted wood valances with 1" wood blinds
- Throw pillows
- A/C disbursement through fluted valances port and starboard
- Smoke detector
- Yamaha receiver RX V1300
- Sony DVD CD 5 track player
- Light tan carpeting
- Telephone outlet
- AC & DC light fixtures
- AC duplex outlets
- Electric panels

- Stereo speakers

---

## Galley

---

Going forward you enter the galley with all the appliances at your finger tips. A Flat top stove, microwave, under counter sub-zero freezer and fridge units, and plenty of drawer storage for dry goods, serving plates, utensils, and cookware. keeps the chef happy for those long trips. Across to starboard you will find a newly recovered leather dinette with nice varnished table. 32" flat screen is housed here which allows viewing from either the salon or dinette areas.

- Amtico Flooring
- Panel Headliner
- Fluted wood valences with 1" wood blinds
- Fixed frameless windows with extra dark tinted safety glass
- Solid surface Avonite CAIRO colored countertops
- Undercounter sub-zero freezer units (2)
- Undercounter sub zero fridge unit (1)
- L-shaped newly recovered dinette with storage under the seat
- 4 sets of large pull out storage drawers
- Sharp microwave/convection oven
- Whirlpool (4) burner flat top stove
- Electric water level gauge
- AC DC light fixtures
- AC dimmable lights
- Telephone outlet
- AC through wooden valances
- Finished wood inserts

---

## Companionway

---

- Carpet runner
- Steps to staterooms and guest head
- Panel headliner
- Panel wallcovering
- DC light fixture
- Flush panel doors with door stops to master stateroom, guest and bow staterooms and guest head
- Washer/Dryer, full size unit

---

## Master Stateroom

---

The Master stateroom to port down the companionway steps hosts a queen size berth. This



stateroom is loaded with ample storage and hosts its own en-suite head.

- 20" sharp LCD TV
- High gloss cherry woodwork
- 3 drawer night stands each side of berth
- Large cedar lined hanging locker with doors, shelf and automatic light
- Bowed dresser with drawers and entertainment center above
- Full length mirror
- Private access to head with door stop
- A/C disbursed through fluted valances
- Smoke detector
- Additional storage cabinets added overhead
- Full queen berth with polyfoam mattress
- Cedar lined storage underneath
- Panel headliner
- Finished wood bulkheads
- AC & DC light fixtures
- AC dimmable lights
- AC duplex outlets
- AM/FM stereo receiver and CD/DVD player
- Stereo speakers
- DC low voltage lights behind valance

## Master Head

---

The master head affords the vessel's owner a great deal of private space.

- Amtico vinyl strip flooring
- Panel headliner
- Wallcovering
- Stall shower with seat, door and automatic enclosed sump pump
- Storage cabinet with mirror
- Screened overhead ventilator hatch with privacy cover
- AC discharge
- Linen storage
- Granite Countertops
- Bowed wood base cabinet with storage
- Towel bar
- Oversized/elongated freshwater toilet bowls
- AC & DC light fixtures
- Plexi mirror around upper cabinet
- AC duplex outlet

---

## Guest Stateroom Starboard

---

The Starboard guestroom has two twin berths each with custom accents and shares a small dresser in between. All dressers and cabinets are done in high gloss cherry with mirror accents which make this a very pleasing guest arrangement.

- Light tan carpeting
- Cedar lined hanging locker with doors, shelf and automatic light
- A/C disbursed through fluted valances
- Bowed front nightstand with storage
- Full length mirror
- Stereo speakers with volume control
- Mirrored bulkhead
- Custom outboard storage cabinets
- Panel headliner
- Padded panels on hullside
- Twin berths with polyfoam mattresses down two steps into the stateroom
- AC and DC light fixtures
- AC dimmable lights
- AC duplex outlets
- Private access to head with door stop

---

## VIP Stateroom

---

The VIP stateroom located in the bow also has bunks.

- Light tan carpeting with carpet runner
- Polyfoam mattress's
- Padded panels on hullside
- AC and DC fixtures
- AC dimmable lights
- Full length mirror
- Clear plexi mirror on forward bulkhead
- Panel headliner
- Finished wood bulkheads and wallcovering
- Upholstered berth base
- Cedar lined hanging lockers with automatic light
- Overhead storage lockers, port and starboard
- Smoke detector
- DC AM/FM stereo receiver with CD player
- TV
- AC disbursement through fluted wood valences port and starboard
- Linen storage

---

## Guest Head

---

- Amtico wood flooring
- Granite counter tops
- Bowed wood front cabinet base
- Screened overhead ventilator hatch with privacy cover
- AC discharge
- AC air freshener blower
- Panel headliner
- Wallcovering
- Oversized freshwater toilet
- Towel Bar
- Plexi Mirror
- AC duplex outlet

---

## Fly Bridge

---

Access to the 150 sq. ft. flybridge is gained from a ladder on the port side of the cockpit. This one piece molded bridge will delight the seasoned captain for its ergonomic layout and sheer space. The helm station with pod console takes center stage. There is a large and comprehensive suite of electronics in the power actuated helm console. Guest seating is provided by two benches with storage below, and an insulated drink box is conveniently located forward to port.

- All molded fiberglass
- EZ2CY (2014)
- Cushions recovered 2014
- Top loading insulated drink box
- Two bench seats with removable cushions and storage underneath
- Polished anodized welded aluminum rails and stanchions
- Powder coated grab rail
- Compass with dimmable light
- Hydraulic power assisted steering
- Rudder angle indicator
- Electric fuel gauges
- AC weatherproof receptacle
- AM/FM stereo receiver with CD player and speakers
- 24V distribution panel
- FCV Furuno -fish radar
- Teaser Reel cabinet
- Outrigger
- Rod storage
- Additional storage areas beneath seat and console
- Neutral interlock switches allowing engine to start in neutral only

- Control station with switches and dimmable lighted tournament console
- Engine synchronization control
- 2 Helm Chairs
- ICOM VHF
- SIMRAD autopilot
- SIMRAD Tri Data
- (3) Furuno Nav Net 3-D

---

## Tuna Tower

---

- Furuno Nav Net
- Compass

---

## Engines & Bilge

---

The painted bilge and engine room provides a surprising amount of space and accessibility

- Dual racor filters
- Aqua Whisper Watermaker
- Eskimo Ice Chipper
- Caterpillar C-32A Engines
- Onan 17 KW Generator
- Water manifold block with centralized shutoff
- AC fluorescent lights
- DC lights
- DC bilge blowers
- Polyethylene water lines
- Fixed fire extinguishing system for engine compartment with automatic and remote manual controls
- Pressurized 24V DC freshwater pump with central charcoal freshwater filter and backflush capabilities
- 230V AC 20 gallon electric water heater
- Sealed shower sump
- 24V DC bilge sump pumps
- Water tanks and holding tanks
- Fiberglass fuel tanks
- Sewage holding tank with 24V DC sewage pump
- Monitoring consoles for main engines, including all necessary gauges start and stop switches
- Seawater pressure system with DC pump
- Insulation in deck
- AC conditioning compressors and pumps

- Pultruded fiberglass rudder shelf
- Rubber mat between engines

---

## Electrical System

---

Hatteras is known for their attention to detail and wiring is one of their strongest points. All wiring is tin-coated and sealed in an insulation jacket. Wiring harnesses are tie-wrapped every 6 inches and secured every 18 inches with easy access. Wiring is color-coded and numbered at both terminal ends, and is well documented in the owner's manual. Go one step further to find their attention to detail in placement of dual light switches on both ends of the salon and companionway for convenience.

- (2) 24V banks of heavy duty 12V marine batteries mounted in fire retardant fiberglass boxes
- A/C 48,000 BTU with reverse cycle heating and soft starting compressors (Cruisair)
- AC and DC light fixtures
- AC dimmable lights
- DC distribution panel with magnetic circuit breakers and battery condition meter
- AC distribution panel with magnetic circuit breakers
- AC switching panel with voltage selector, switch volt meter, ammeter, frequency meter, generator start/stop controls, interlock selector breakers and voltage boost switch
- Ground fault protection on AC receptacles and lighting circuits
- Navigation lights
- Telephone/CATV inlet
- 240V battery charger
- Automativ battery paralleling system with switch at control console
- (1) 240V, 50 amp Glendinning retractable shore cord with overcurrent protection
- AC duplex outlets with ground fault protection
- DC distribution panel with magnetic breakers (engine compartment)
- DC electronics panel with magnetic circuit breakers (bridge)
- Systems monitor with programmable logic controller readout, visual and audible signals for engine, alternator, high bilge water, fire warning in engine compartment, fire extinguisher discharge, AC power loss, smoke detectors, battery voltage and 3/4 full holding tank monitor
- Telephone and CATV shoreline cords, one each
- Omni-directional TV antenna
- UL 1426 listed boat cable, tin coated with insulation

---

## Exterior Finish/ Construction

---

This boat is a perfect blend of speed and style with focus towards fishability. It is also one of the few boats today that provides a rich coat of protective polyurethane paint producing a hard outer

---

surface giving greater protection over the gel-coated porous surfaces than on other boats. It also is easier to repair and match than a gelcoat vessel.

- Isophthalic gelcoat, exterior layer, white
- Bottom Job (2014)
- Blister-resistant vinylester resin in hull bottom skin coat Hull and superstructure, polyurethane coating
- Polymer/copper-based anti-fouling bottom paint
- Boot stripe, polyurethane coating
- Decks, non-skid surface, polyurethane paint with polymeric beads
- Solid fiberglass hull bottom
- Hull sides and superstructure laminated with PVC foam core Fiberglass stringers
- Steel laminated in stringers at key locations to bolt engine mounts
- Engine room bulkheads and decks of resin-infused composite construction using PVC foam core with layers of fiberglass laminate on each side

## Exclusions

---

Owner's personal belongings.

## Disclaimer

---

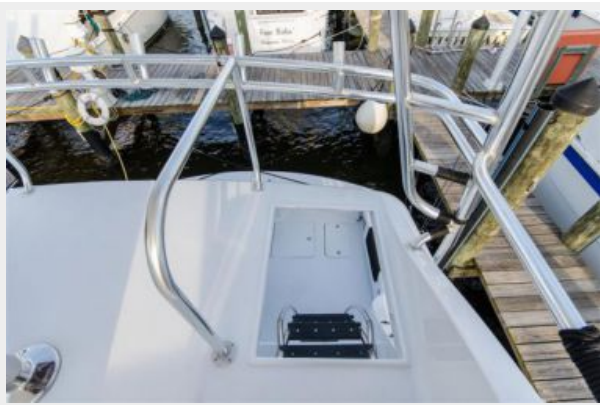
The Company offers the details of this vessel or yacht in good faith but cannot guarantee or warrant the accuracy of this information nor warrant the condition of the vessel. A buyer should instruct his representatives, agents, or his surveyors, to investigate such details as the buyer desires validated. This vessel or yacht is offered subject to prior sale, price change, or withdrawal without notice.

# PHOTOS

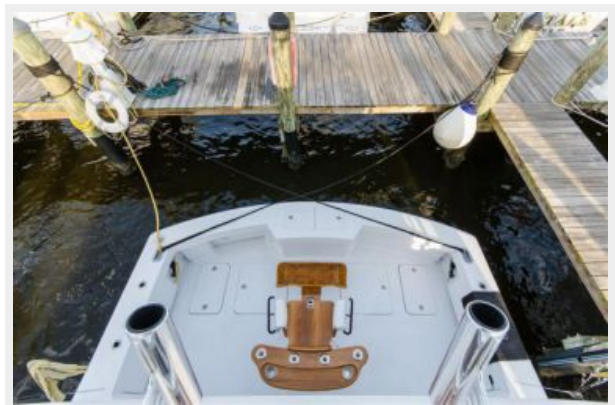




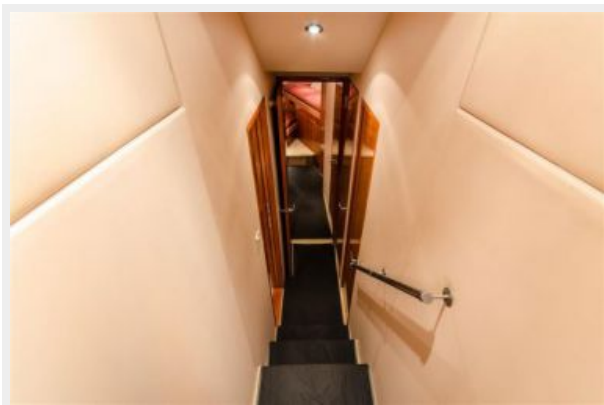




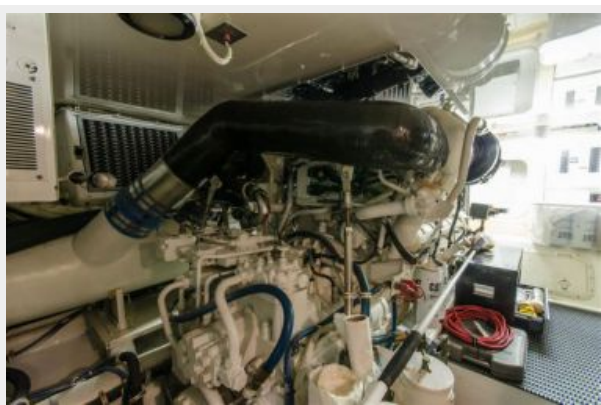
















---

# CONTACTS

---

Andrey Shestakov, leading yacht broker of the sales department of Shestakov Yacht Sales Inc. Shestakov Yacht Sales Inc., the official representative of the Miami/Fort Lauderdale FL headquarters.

---

## Contact details

---

Email: [andrey@shestakovyachtsales.com](mailto:andrey@shestakovyachtsales.com)

Web: [shestakovyachtsales.com/en/](http://shestakovyachtsales.com/en/)

---

## Telephones

---

USA: +1(954)274-4435

---

## Office hours

---

Monday – Saturday: **9:00 - 21:00** EDT

Sunday: **closed**

---

## Address

---



Harbour Towne Marina, 850 NE 3rd St,  
STE 213, Dania, FL 33004