

HIGH MAINTENANCE — VIKING



Судостроитель: VIKING

Год постройки: 2002

Модель: Катер для спортивной рыбалки

Цена: ЦЕНА ЯХТЫ ПО ЗАПРОСУ

Местонахождение: United States

Длина общая: 65' 0" (19.81m)

Ширина: 18' 9" (5.72m)

Мин. осадка: 5' 6" (1.68m)

Крейс. скорость: 31 Kts. (36 MPH)

Макс. скорость: 37 Kts. (43 MPH)

Купить **High Maintenance — VIKING** а также выбрать подходящую вам яхту из нашего **каталога яхт** вам поможет опытный яхтенный брокер Андрей Шестаков. На сегодняшний день компания **Shestakov Yacht Sales Inc.** имеет большое количество яхт в **собственном списке продаж**, а также тесно сотрудничает со всеми крупными **яхтенными производителями** по всему миру.

Для того чтобы купить яхту **High Maintenance — VIKING** а также проконсультироваться по любому вопросу связанному с покупкой, продажей, чартером яхт позвоните по телефону **+7(918)465-66-44**.

ОГЛАВЛЕНИЕ

ОГЛАВЛЕНИЕ	2
ХАРАКТЕРИСТИКИ	5
Обзор	5
Основная информация	5
Размеры	5
Скорость, вместимость и масса	5
Размещение	6
Корпус и палуба	6
Информация о двигателе	6
ПОДРОБНОЕ ОПИСАНИЕ	7
Features	7
Layout	8
Salon	8
Galley	8
Companionway	8
Enclosed Flybridge	8
Options	9
Upgrades 2012 & 2013	10
Electronics	11
Electrical	12
Mechanical	12
Exclusions	12
Исключения	13
Отказ от ответственности	13
ФОТОГРАФИИ	14
Profile	14
Port Profile	14
Port Profile	14

Dinnette	15
Flybridge Sofa	15
Flybridge Sofa	15
Flybridge - Helm	15
Bar - Galley	15
Bar - Galley	15
Galley	16
Aft Bridge	19
Aft Deck Aerial	19
Aft Deck Lower	19
Aft Deck	19
Bose Audio	20
Cold Boxes	20
Bow Thruster	20
Dual Icom Radios	20
Engine Display Modual	21
Engine Override	21
Genset and Moritz Monitor	21
Flatscreen TV & Bose Audio	21
FLIR Camera	22
FLIR Infared & RCL 600 Searchlight	22
Helm	22
Helm - 4 screen Display	22
Helm - Centre	22
Helm - Port	22
Helm - Starboard	23
Helm	23
Bridge Helm	23
Lazarette	23

Lazarette	24
Lazarette	24
Lazarette	24
Lazarette	24
Lazarette	24
Lazarette	24
Lower Deck	25
Props	25
Props	25
Props	25
КОНТАКТЫ	26
Контактная информация	26
Телефоны	26
Время работы	26
Адрес	26

ХАРАКТЕРИСТИКИ

Обзор

Fast and agile with muscular lines and lavish accommodations, the 65' Viking was a sales success before the first hull was ever commissioned. She's built on a fully cored, modified-V hull with a shallow keel, wide reverse chines and a wide 18' 9" beam. With the amidship Master Stateroom, the three stateroom layout provides an uncompromising level of comfort. The step-down crew can easily be converted to a fourth stateroom. Topside, the enclosed bridge, reached from a spiral staircase in the salon, offers excellent all-weather visibility and entertaining.

Основная информация

Тип судна: Катер для спортивной рыбалки

Подкатегория: Катер для спортивной рыбалки

Модельный год: 2002

Год постройки: 2002

Страна: United States

Верх: Enclosed

Размеры

Длина общая: 65' 0" (19.81m)

Ширина: 18' 9" (5.72m)

Мин. осадка: 5' 6" (1.68m)

Скорость, вместимость и масса

Крейс. скорость: 31 Kts. (36 MPH)

Макс. скорость: 37 Kts. (43 MPH)

Водоизмещение: 96000 Pounds

Вместимость воды: 350 Gallons

Вместимость сточного бака: 150 Gallons **Объем топливного бака:** 1850 Gallons

Размещение

Всего кают: 4

Всего ком. состава: 4

Корпус и палуба

Материал корпуса: Fiberglass

Информация о двигателе

Двигатели: 2

Производитель: MTU

Модель: 16V-2000

Тип двигателя: Inboard

Тип топлива: Diesel

ПОДРОБНОЕ ОПИСАНИЕ

Features

Electronics

- Depthsounder
- Radar
- Log-Speedometer
- Wind Speed and Direction
- TV Set
- Navigation Center
- VCR
- Plotter
- DVD Player
- Autopilot
- Radio
- Compass
- CD Player
- GPS
- Cockpit Speakers
- VHF

Inside Equipment

- Dishwasher
- Bow Thruster
- Washing Machine
- Electric Bilge Pump
- Oven
- Microwave Oven
- Marine Head
- Air Conditioning
- Heating
- Hot Water
- Refrigerator
- Fresh Water Maker
- Deep Freezer
- Sea Water Pump
- Battery Charger

Electrical Equipment

- Shore Power Inlet
- Generator - Twin 23kw

Outside Equipment/Extras

- Davit(s)

Layout

The 65' Viking boasts a four stateroom/four head layout. The master stateroom features an island queen with enormous closets. A custom dressing table and a Bose 321 system for enhance this lavish design. The starboard stateroom was upgraded to a single bunk with a larger berth and extensive storage beneath the bed. The forward stateroom features cross over berths. The fourth or crew cabin with twin berths and an ensuite head is midship accessible and has engine room access.

Salon

The salon features a comfortable, U-shaped leather sofa enhanced with a high gloss teak table, and features flat screen TV's, SAT TV receivers, blu-ray player and Bose surround sound throughout. A Whirlpool icemaker and custom allow for effortless entertaining.

Galley

The galley features a two under counter Subzero refrigerator drawer units and one Subzero freezer drawer unit, granite counter tops and high gloss teak rails. The black sink includes a garbage disposal. Other appliances include: Sharp Carousel Microwave, Kenmore 4 -burner stove, Kenmore Oven and Kenmore Dishwasher. The galley offers abundant storage with spacious cabinets and deep pull out drawers cabinets. Just forward of the galley is a custom dry storage pantry. Opposite the galley is the six-seat dinette around a teak table inlaid with granite and two large storage cabinets with pull out drawers. Storage can also be found underneath the dinette couch.

Companionway

Stepping down from the galley you will find a full size washer and dryer to starboard with custom storage adjacent for cleaning supplies. The washer and dryer units were recently replaced with Maytag units.

Enclosed Flybridge

The air conditioned enclosed flybridge can be entered either from the salon's spiral staircase or from the outside deck ladder. Outside of the out-swing flybridge door are two helm control stations, one facing forward and a custom one facing aft. The helm area is furnished with two

double-wide Stidd benches on either side of the captain as well as a high-back Stidd centerline on the helm. The helm console is large and has ample storage underneath with doors on both sides of the console. Aft is a slightly raised, L-shaped sofa, coffee table, refrigerator, wet bar, LCD TV, and Bose audio system.

Options

Alfa Laval Fuel polisher

Fuel priming pumps

Oil change system

Dual racors and gauges in engine entryway

Aqua Whisper Sea Recovery Water Maker

Pura 4 stage water filtration & purifying system

Solid wood raised panel cabinets

Whirlpool high volume ice maker in Salon

Crushed Ice Maker (Eskimo 600 pounds per 24 hrs)

Aft Deck freezer & step cooler 5 deck fish wells & additional transom fishwell

Extra helm station on upper aft deck and lower aft deck (4 station set up)

Life Raft (Recent Service)

Roof mounted EPIRB with static release

ABT TRAC variable speed bow thruster

Rupp Marine Outriggers w/ Electric Teaser Reels

Marquipt 1500lb davit with hydraulic lift and rotation

Props Tuned 2012, 'Propspeed' on props, struts and rudders

Electronic trolling valves

Baby ostrich headliner throughout interior and enclosed flybridge

Orthopedic mattresses in all staterooms

Head ceiling mirrors in all three heads

Dimmer switches on salon, dinette, galley and companionway switches

Vanity at entrance to master stateroom

One piece shower door in master stateroom head

Auto salon door

Stainless steel gas shocks on cockpit sole hatches (5)

Oval exhausts Kiddie rail half way between rocket launcher rail and flybridge deck

Air line from engine room compressor to dockside utility box in cockpit

Upgrades 2012 & 2013

Interlux 2000E Epoxy Paint on hull bottom (6 coats)

Interlux Micron Extra Bottom Paint (3 coats in 2012, 1 coat 2014)

Complete new Bose Audio system throughout entire vessel and all audio systems integrated: Salon, Aft Deck, 4 bedrooms, and Helm. Flat screen tv's throughout.

New ULine refrigerator in Helm

New Water Heater

Entire aft deck plumbing including overboard discharge pumps for fish/bate wells replaced

New Aircon 30,000btu compressor unit for salon

Glendining Cable Master motors, relays, switches replaced

New Under water lights (6 total) - 4 Sea Vision SV42 wide array and 2 Sea Vision SV20 directional pointer beams.

New aft deck courtesy lights with dimmer function New Transom & Shaft Anodes – Aluminum (spare sets on board also)

New 'Guest' grounding plates & grounding wiring in lazarette

New Carpet throughout entire boat

New Isoboost 50 Isolation transformers (x2)

Charles 5000 Series 24vdc Battery Charger

New AGM Batteries 8A31DT

New mattresses- Master (pocket coil), Fwd Bed, Crew Quarters (x2)

New Maytag Washer & Dryer

New Bilge Pumps and float switches

New Nav Lights replaced lights on roof mast

New fresh water 24VDC and spare New fresh water 110V on board

New aft deck wash down pump

New Circulation Fans in engine room

New blower extractor fans in bathrooms

New overboard discharge pumps, livewell water pumps and plumbing drains from all aft deck fish boxes

New sanitation system throughout including 4 Vacuflush vacuum generators, "Odor Safe Plus" sanitation hose, over board Macerator, Y valves etc.

New Air Conditioning sea water pump (spare on board)

Electronics

Just above the ice maker is the main circuit breaker panel.

Navigation Electronics package upgraded in 2013 & 2014:

Furuno BB NavNet 3D

2 x Furuno 12" Multifunction Displays

FLIR Navigator infrared camera

Garmin GPS Map 4208 Backup (inland waterways chart package also)

Furuno FA50 AIS

Furuno BBWX1 Sirius satellite/weather

Simrad auto pilot control system

Elbex Camera System- Engine room (x2) & Aft deck PTZ camera

2 x iCom M504 VHF radios on helm, 1 Sea Talk VHF radio in Salon

KVH M7 Dome Satellite TV

Sat Phone

2 x Raymarine i70 4" multi function displays (2012)

6 Foot Open Array Furuno Radar (2012)

Search Light ACR RCL 600 (New 2013)

2 x 19" Nauticomp Screens (2014) hooked up to Furuno BB NavNet 3D

Electrical

Onan 27.5 kw generator with 2689 hours

Onan 21.5 kw generator with 2638 hours

Generator gauge package with remote start/stop at helm

Mechanical

Generators overhauled: New hoses, fuel lines, fuel pumps, water pumps, heat exchangers, coolant, oil, exhaust manifolds, breakers, valve lash and replace output voltage regulators on both generators

Full Coolant flush on mains and new coolant (2012)

Transmission fluid replaced (2013)

Replaced all engine sensors (2012)

Various engine hoses etc, replaced as needed recently

Replaced both ERM's on both engines (2012)

New Turbo on Port engine (2011)

New pump on Stbd transmission (2013)

New sea water pump on Port engine (2013)

New belts on both engines New sea water pump on Port engine

Exclusions

Owners Personal Items

Zodiac Tender

Name

Mac Mini Computer

Исключения

При продаже яхты исключаются личные вещи владельца.

Отказ от ответственности

Компания предоставляет описание судна или яхты добросовестно, но не может гарантировать точность этой информации, а также не ручается за техническое состояние. Покупатель должен проинструктировать своих агентов или оценщиков исследовать представленную информацию более подробно, по собственному желанию. Продажа судна или яхты, изменение цены или снятие с продажи будет происходить без предварительного уведомления.

ФОТОГРАФИИ

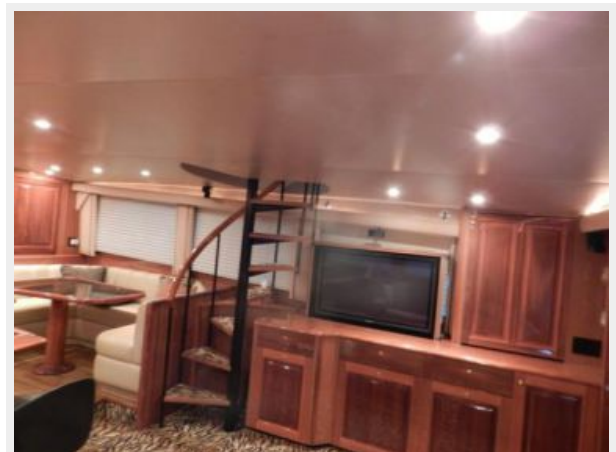
Profile



Port Profile



Port Profile



Dinnette



Flybridge Sofa



Flybridge Sofa



Flybridge - Helm



Bar - Galley



Bar - Galley



Galley









Aft Bridge



Aft Deck Aerial



Aft Deck Lower



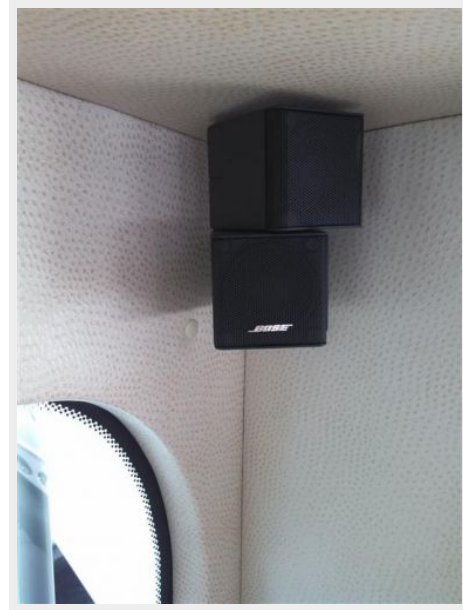
Aft Deck



Cold Boxes



Bose Audio



Bow Thruster



Dual Icom Radios



Engine Display Modul



Engine Override



Genset and Moritz Monitor



Flatscreen TV & Bose Audio



FLIR Camera



FLIR Infrared & RCL 600 Searchlight



Helm



Helm - 4 screen Display



Helm - Centre



Helm - Port



Helm - Starboard



Helm



Bridge Helm



Lazarette



Lazarette



Lazarette



Lazarette



Lazarette



Lazarette



Lazarette



Lower Deck



Props



Props



Props



КОНТАКТЫ

Андрей Шестаков (Andrey Shestakov) – ведущий яхтенный брокер отдела продаж яхт и судов компании Shestakov Yacht Sales Inc. Официальный представитель Shestakov Yacht Sales Inc. для русскоговорящих клиентов в центральном офисе компании в Майами/Форт Лодердейл/Флорида/США.

Контактная информация

Email: andrey@shestakovyachtsales.com

Web: shestakovyachtsales.com

Телефоны

Краснодарский край: **+7(918)465-66-44**

США, Майами, Флорида: **+1(954)274-4435**

Время работы

Понедельник – Суббота: **9:00 - 21:00**
EDT

Воскресенье: **Закрито**

Адрес



Harbour Towne Marina, 850 NE 3rd St,
STE 213, Dania, FL 33004