

FOOTLOOSE — CHEOY LEE



Судостроитель: CHEOY LEE

Год постройки: 2008

Модель: Моторная яхта

Цена: **ЦЕНА ЯХТЫ ПО ЗАПРОСУ**

Местонахождение: United States

Длина общая: 95' 0" (28.96m)

Ширина: 22' 0" (6.71m)

Мин. осадка: 6' 0" (1.83m)

Крейс. скорость: 18 Kts. (21 MPH)

Макс. скорость: 25 Kts. (29 MPH)

Купить **FOOTLOOSE — CHEOY LEE** а также выбрать подходящую вам яхту из нашего каталога яхт вам поможет опытный яхтенный брокер Андрей Шестаков. На сегодняшний день компания **Shestakov Yacht Sales Inc.** имеет большое количество яхт в собственном списке продаж, а также тесно сотрудничает со всеми крупными яхтенными производителями по всему миру.

Для того чтобы купить яхту **FOOTLOOSE — CHEOY LEE** а также проконсультироваться по любому вопросу связанному с покупкой, продажей, чартером яхт позвоните по телефону **+7(918)465-66-44**.

ОГЛАВЛЕНИЕ

ОГЛАВЛЕНИЕ	2
ХАРАКТЕРИСТИКИ	4
Обзор	4
Основная информация	8
Размеры	8
Скорость, вместимость и масса	9
Размещение	9
Корпус и палуба	9
Информация о двигателе	9
ФОТОГРАФИИ	10
Profile	10
Main Salon	10
Main Salon	10
Main Salon	10
Main Salon	10
Dinning Room	10
Galley	11
Galley	11
Galley	11
On Deck Master Stateroom	11
Master Head	12
On Deck Master Stateroom	12
Master Head	12
Master Head	12
Aft Stairwell	12
Second Master Stateroom	12
Second Master Stateroom Head	13
Second Master Stateroom	13

VIP Stateroom	13
VIP Stateroom	13
VIP Stateroom	14
Sky Lounge	14
Sky Lounge	14
Pilothouse Stairs	14
Flybridge	14
Pilothouse	15
Engineroom	15
Crew	15
Engineroom	15
Crew	16
Crew	16
Side Deck	16
Aft Deck	16
Fore Deck	17
Anchor	17
Side Deck	17
Swim Platform	17
КОНТАКТЫ	18
Контактная информация	18
Телефоны	18
Время работы	18
Адрес	18

ХАРАКТЕРИСТИКИ

Обзор

SEE FOOTLOOSE AT THE 2015 PALM BEACH INTERNATIONAL BOAT SHOW

MARCH 26 - 29 SLIP# D-300AD

FOOTLOOSE a remarkable custom yacht from Cheoy Lee Yachts has the look, volume and amenities of a much larger yacht.

FOOTLOOSE has undergone recent (January 2015) upgrades, service and improvements of (see full list below) and CAT engine warranty until April 2015.

FOOTLOOSE would be perfect for chartering or catering to large parties. An on deck Master Stateroom and a "second" Master Stateroom below in addition to two huge VIP staterooms make this an extremely desirable layout.

* Preliminary Photos Shown Below

UPGRADES AND SERVICE WORK COMPLETED JANUARY 2015

MECHANICAL ¥ DOMETIC SEA EXCHANGE 1800 GPD ¥ 5 BREATHE EASY UV LIGHTS ¥ C8 FILTERS-ALL AIR HANDLERS **ELECTRONICS**

¥ KVH HD7 ¥ 2 HANDHELD ICOM BC 152N ¥ UPGRADED 18" VEI MONITORS ¥ DELL PC ¥ FURUNO RD33 ¥ FURUNO 200WX ¥ WAVE WIFI ¥ NOBELTEC IR2 RADAR ¥ ACR EPIRB (2) ¥ AV EQUIPMENT

SALON ¥ SAMSUNG 50" SMART LED ¥ MARANTZ HOME THEATER RECEIVER ¥ AIRPORT EXPRESS

SKY LOUNGE ¥ SAMSUNG 46" SMART LED ¥ MARANTZ RECIEVER

MASTER ¥ MARANTZ RECIEVER

AFT DECK ¥ U LINE FRIGERATOR ¥ (4) TEAK CAPTAINS CHAIRS

ENGINE ROOM ¥ P-1623HR BONDING SYSTEM SERVICED ¥ AFTERCOOLER SERVICED ¥ HEAT EXCHANGER SERVICED ¥ FUEL FILTER NEW ¥ OIL FILTER NEW STEERING GEAR COMPARTMENT ¥ OIL NEW RUDDER POST FLANGE ¥ AFTERCOOLER SERVICED ¥ HEAT EXCHANGER SERVICED ¥ OIL FILTER NEW ¥ OIL NEW ¥ FUEL FILTER NEW ¥ FUEL TRANSFER PUMP FIXED ¥ NEW RACOR 30MICRON

MAIN SALON

Starting at the top, one of the first things different about the Footloose is the sky lounge is all

recreational area for the owner and guests to watch the scenery go by. This is the only Bravo 95 specifically ordered with the helm area in the pilothouse rather than the sky lounge. There is a forward looking bench seat with fold up tables for reading the paper or eating as you cruise.

There are drawers for storage under the bench seating. Behind the seating is a L shaped sofa with hinged seat bases for easy lifting to store underneath. A table in front of the sofa houses additional drawers for storage. To starboard on the sky lounge is a wet bar, with granite counter tops. Beneath the counter is a Sub Zero compact refrigerator/freezer with icemaker. The wet bar and ice maker have a Aqua Pure water filtration devise. There is a 40 inch Sony Bravio TV which is a pop up and it is connected to a Surround sound system with DTV and a DVD player. Floor coverings in this area are carpet. The forward windows have an exterior Texoline windshield cover and the side windows have easily installed interior Texoline window covers.

Two large sliding stainless steel doors open to the upper aft deck area. There is L shaped seating here with a granite table top held up by two polished stainless steel bases. To starboard and port are granite topped counters with large storage areas below. Further aft is a stainless Fire Magic LP gas grill. The LP cylinders are housed below and additional storage space is available also. Aft of the grill is the 17 foot Nautica hard bottom inflatable dinghy with 90 hp Yamaha 4 stroke engine, and the Nautical structures Euro 1700 davit with power rotation.

There is a teak stairway with sliding hatch top which leads down to the aft deck. Outboard on each side is a Revere 8 man life raft (2 total). An ACR EPIRB is mounted next to the grill.

Prior to the final order of the Footloose, while viewing previously built Bravo 95's, the Owner and the Captain decided that the raised pilot house area on yacht was the preferred spot for the Captains operations. Visibility both forward and peripherally is much better with capability to see out of the large lower level windows as well. This area is reached via 5 steps down from the sky lounge. There is a two step raised L shaped seating behind the helm chairs which gives a great view to the guests. There is an Avonite table to one side of the seating area. The flooring in the pilot house is teak and holly Amtico flooring. The captain's console houses four 18 inch VEI monitors for vessel navigation and monitoring. The console has ZF electronic shift controls, two Icom vhf radios, Simrad auto pilot, Simrad remote wireless auto pilot control, Simrad Jog lever, Naid digital stabilizer controls, Naiad bow and stern thruster controls, Cheoy Lee systems monitor, Furuno Nav net controls, ACR spot light control, 5" compass Maxwell windlass control, controls for the three 36" wipers, and a Pelco video switcher. Clock and barometer mounted on the aft wall of the pilothouse. The forward windshield has and exterior texoline cover and the side windows have the interior installed texoline covers.

Steps down from the pilot house and to the port is the galley, with granite floors, counter tops, and full granite back splashes. There is a stainless sink with instant hot water and a Aqua Pure water filter unit. To port are two large 60" windows and a skylight overhead. The galley has a GE profile stainless microwave, GE profile cook top, GE dishwasher, KitchenAid side by side refrigerator/freezer, Sub Zero wine cooler, and a Sub Zero under counter 2 drawer pull out freezer. On the port side of the galley is a door to the exterior deck, aft of that is a door to the dining area. There is a double door pantry, one side has six pull out drawers and the other side

has shelving. The flooring is teak and holly Amtico.

Forward of the galley is the large deck level Master #1, it has 6 large deck level windows with pleated pull down shades. There is a king bed with mirror behind headboard and 8 drawers under the bed. Night stands with storage on both sides of the bed with reading lights. Opposite the bed is a Sony Bravia 40" tv with 8 drawers below it. On both sides of the TV are closets (2). One closet has a safe inside. There are additional storage areas on both sides of this master below the windows outboard. There is a desk with granite top and drawers below. This master is carpeted. Forward is the head with granite flooring, two sinks and granite counter tops with a dressing table between the sinks. To port is a large granite shower with seating and a Head hunter head. There is a large overhead escape hatch which lets lots of natural light into the head.

Behind the galley is the dining area and Salon. Ten large 60" diagonal windows allow great views and lighting from this area. There is a beautiful wood dining table and six chairs to port. Outboard of the table is a storage area with granite counter. To starboard is a wet bar with granite countertop. Below the wet bar is a Scotsmans Ice maker and a Scotsmans refrigerator. Aft of the wet bar is an additional three door storage area. The Salon has a L shaped sofa with storage below the cushions and a cocktail table drawers. Eight wall sconces and all overhead lights on dimmers. Sony 46" tv, DTV, DVD player, Surround sound, and 400 disc changer are housed in the salon's entertainment center. A large sliding stainless door leads to the aft deck.

Master stateroom #2 is accessed down a beautiful stairway from the Salon down to a granite floored foyer which houses a 27" washer and dryer. Thru to the master is a King bed with mirror above headboard, reading lights, drawers under bed, and night stands with storage on both sides of the bed. Opposite the bed is a 40" Sony TV with DTV and a DVD player. Ten drawers under the tv and a closet on both sides of the stateroom with a safe in one of the closets. There are two large portholes on both sides of the stateroom with sliding covers. To starboard is a sofa with a storage cabinet next to it. Forward of the stateroom is the head with granite floors, shower, and walls. There are two sinks, a large shower with seating, Head Hunter head, and a urinal. There is a towel warmer mounted in the head also.

Thru the foyer and aft leads to both guest staterooms which both feature Queen beds with mirrors above headboards, reading lights, night stands on both sides of the beds with storage, and drawers under the bed. Both of these staterooms have two closets with escape routes thru closets to engine. Guest heads have Head hunter heads, granite counters, floors, and full granite showers. They each have two large portholes to view the waterway thru while in your stateroom. There are sliding porthole covers. Each of these staterooms has Panasonic 26" TV's with DVD player.

The aft deck has a large forward facing bench seat with a wide Avonite table held up by two polished stainless bases. Full teak decks and wing doors leading forward. To port and forward on the aft deck is a storage compartment housing a U line refrigerator/icemaker and another overhead storage area with a wet bar sink. Also to port is a stairway down to the crews quarters. To starboard forward are the teak steps up to the upper deck area, storage is located below these stops as well as under the bench seating aft. There are two windlasses for stern lines with cleats,

side entry doors, and stairs on either side leading down to the swim deck. The swim deck has three hatches in it to access machinery and storage. The stern has two storage compartment doors and a center door to the crews quarters. The starboard door has the controls for the Hamman waste treatment system in it.

The crew area from the swim deck has steps down and on the right is a bench seat with storage below. A 20" tv is mounted to the opposing wall above a fold up dining table. There is a 24" washer and dryer. To port is a carpeted crew room with two bunks, a head, and a shower. To starboard is the Captains quarters with queen bed, a large closet. There are four drawers under the bed and four drawers under the closet. A night stand with four drawers below it. Attached head and shower. The captains room has Amtico flooring. Forward in the crews quarter to right is a sink and storage cabinet with DTV receiver and DVD player, to port is a stairway out to port aft deck area. Forward is the door to the engine room.

ENGINES

Just completed a full service [January 2015] see full list above.

The starboard CAT engine had an after cooler leak at about 900 hours, the captain and original owner decided to replace the engine entirely instead of having it rebuilt. The entire engine was removed and replaced with a new 0 hour engine. No holes for access were put in the vessel. The Vulkan element was also replaced at this time. The port engine after cooler was inspected with no leaks and it was replaced with a new one at this point also. The exhaust was updated with Marine Exhaust products on both engines at this time also. **Both engines are currently covered by transferrable full CAT warranties until April 2015.**

MECHANICAL

¥ Triple racor fuel filters for each engine, full sea strainers for each engine. ¥ Tank Tender fluid monitor system ¥ Manual gauges mounted on engine ¥ Hamon waste treatment system ¥ Compressor and Buell air horn system/Reverso oil change system/ One Head hunter 120 volt ships water pump/ additional Grundfos 120 volt water pump/ 24 volt water pump ¥ Northern lights generators 40kw port 1070 hours Starboard 1037 hours ¥ Racor fuel filters on generators ¥ Central Naiad system with 50hp bow thruster and 30 hp stern thruster, Naiad Datum stabilizer control with double PTO hydraulic pumps one on each engine ¥ Fuel transfer pump with counter ¥ Hynautic power steering system ¥ Climate control via two 10 ton Marine air chillers with Frequency drives ¥ Wired remote control which plugs in mid ship on port and starboard sides and well as stern area.

Deck Equipment

¥ There are four large cleats on each side of the main deck ¥ One cleat on the swim deck centered ¥ Two dinghy fold down cleats on the swim deck ¥ Forward deck Maxwell windlass 4000 lb with chain and auto wash system ¥ Two forward deck compartments with chain locker and storage areas as well as a fresh water connection. ¥ Two windlasses on aft deck Maxwell 1500 for stern lines ¥ 24" wide Marquipt tide ladder 8 step

Electronics

¥ Sea tel DTV antenna with 5 DTV receivers ¥ (2) Icom M604 vhf radios ¥ (4) 18" VEI monitors connected to Furuno nav net 72 mile radar, plotter, fish finder ¥ PC based plotter and four cameras for monitoring ¥ Simrad S35 jog lever ¥ Simrad AP26 pilot ¥ Simrad WR20 wireless remote ¥ ACR spotlight/ACR EPIRB ¥ Maxwell anchor remote ¥ Wired controls with bow, stern thrusters and gear plus throttle controls ¥ Panasonic office phone system with intercom ¥ Cell phone system with antenna booster

Electrical

• 120/240 volt ¥ twin 100 amp service on cable masters with iso transformers ¥ Two main panels in engine room, one dedicated to air cond, ac and dc sub panels thru out boat ¥ Three Sentry battery charger charging ¥ 12 Gel batteries ¥ 9 bilge pumps/ ¥ Vanner equilizers ¥ 12/24volt dc systems

Основная информация

Тип судна: Моторная яхта

Подкатегория: Flybridge

Модельный год: 2008

Год постройки: 2008

Страна: United States

Верх: Raised Pilothouse

Открытая палуба мостика: Да

Размеры

Длина общая: 95' 0" (28.96m)

Длина по ватерлинии: 83' 9" (25.53m)

Ширина: 22' 0" (6.71m)

Мин. осадка: 6' 0" (1.83m)

Длина привального бруса: 96' 6"
(29.41m)

Скорость, вместимость и масса

Крейс. скорость: 18 Kts. (21 MPH)

Макс. скорость: 25 Kts. (29 MPH)

Водоизмещение: 202800 Pounds

Вместимость воды: 800 Gallons

Вместимость сточного бака: 350 Gallons **Объем топливного бака:** 5300 Gallons

Размещение

Всего кают: 6

Всего коек: 8

Спальные места: 8

Всего ком. состава: 7

Каюта капитана: Да

Каюты экипажа: 2

Койки экипажа: 4

Спальных мест экипажа: 4

Комм. состав экипажа: 2

Корпус и палуба

Материал корпуса: Fiberglass

Материал палубы: Fiberglass

Комплектация корпуса: Modified V-Hull

Цвет корпуса: White

Дизайнер экстерьера: Cheoy Lee

Дизайнер интерьера: Cheoy Lee

Информация о двигателе

Производитель: Caterpillar

Модель: C-32

Тип топлива: Diesel

ФОТОГРАФИИ

Profile



Main Salon



Main Salon



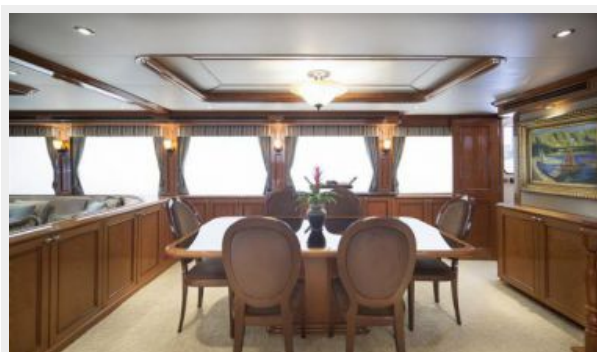
Main Salon



Main Salon



Dinning Room



Galley



Galley



Galley



On Deck Master Stateroom



On Deck Master Stateroom



Master Head



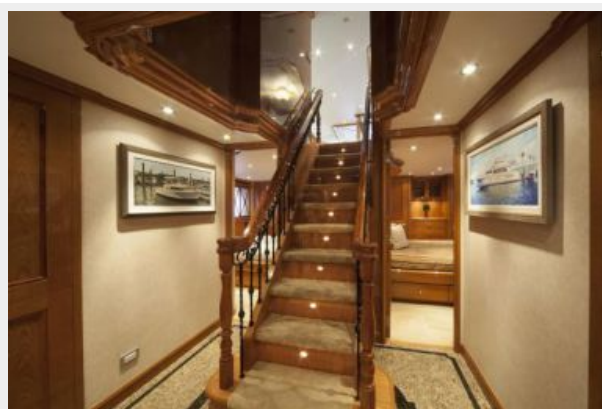
Master Head



Master Head



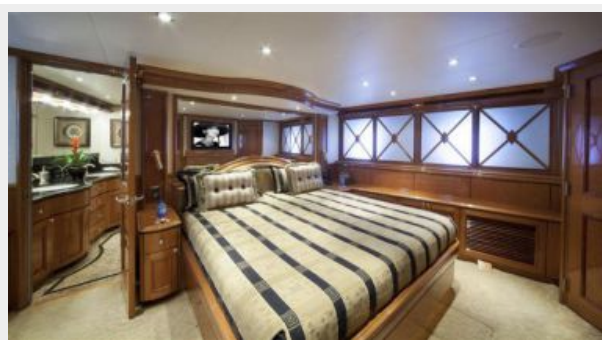
Aft Stairwell



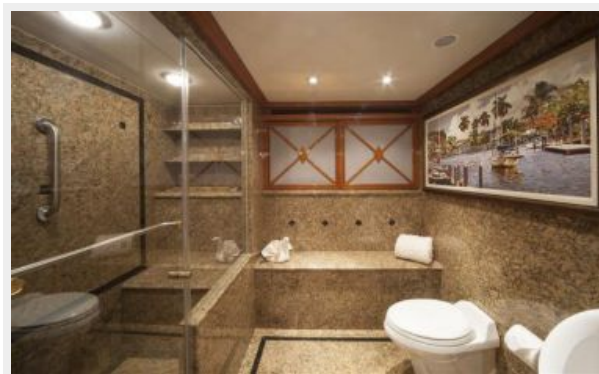
Second Master Stateroom



Second Master Stateroom



Second Master Stateroom Head



VIP Stateroom



VIP Stateroom



VIP Stateroom



Sky Lounge



Sky Lounge



Flybridge



Pilothouse Stairs



Pilothouse



Engine room



Crew



Engine room



Crew



Crew



Aft Deck



Side Deck



Fore Deck



Anchor



Side Deck



Swim Platform



КОНТАКТЫ

Андрей Шестаков (Andrey Shestakov) – ведущий яхтенный брокер отдела продаж яхт и судов компании Shestakov Yacht Sales Inc. Официальный представитель Shestakov Yacht Sales Inc. для русскоговорящих клиентов в центральном офисе компании в Майами/Форт Лодердейл/Флорида/США.

Контактная информация

Email: andrey@shestakovyachtsales.com

Web: shestakovyachtsales.com

Телефоны

Краснодарский край: **+7(918)465-66-44**

США, Майами, Флорида: **+1(954)274-4435**

Время работы

Понедельник – Суббота: **9:00 - 21:00**
EDT

Воскресенье: **Закрито**

Адрес



Harbour Towne Marina, 850 NE 3rd St,
STE 213, Dania, FL 33004