

JULIETTE — GRAND BANKS



Судостроитель: GRAND BANKS

Год постройки: 2006

Модель: Моторная яхта

Цена: **ЦЕНА ЯХТЫ ПО ЗАПРОСУ**

Местонахождение: United States

Длина общая: 43' 0" (13.11m)

Ширина: 13' 2" (4.01m)

Макс. осадка: 3' 8" (1.12m)

Макс. скорость: 28 Kts. (32 MPH)

Купить Juliette — GRAND BANKS а также выбрать подходящую вам яхту из нашего каталога яхт вам поможет опытный яхтенный брокер Андрей Шестаков. На сегодняшний день компания Shestakov Yacht Sales Inc. имеет большое количество яхт в собственном списке продаж, а также тесно сотрудничает со всеми крупными яхтенными производителями по всему миру.

Для того чтобы купить яхту Juliette — GRAND BANKS а также проконсультироваться по любому вопросу связанному с покупкой, продажей, чартером яхт позвоните по телефону **+7(918)465-66-44**.

ОГЛАВЛЕНИЕ

ОГЛАВЛЕНИЕ	2
ХАРАКТЕРИСТИКИ	4
Обзор	4
Основная информация	4
Размеры	4
Скорость, вместимость и масса	4
Размещение	4
Корпус и палуба	4
Информация о двигателе	5
ПОДРОБНОЕ ОПИСАНИЕ	6
Recent Upgrades	6
Accommodations	6
Salon/Dining	6
Helm Area	7
Galley	7
Master Stateroom	8
Guest Stateroom	8
Head	8
Electronics & Navigation	9
Electrical Equipment	9
Deck Equipment	10
Mechanical Equipment	11
Broker Remarks	12
Exclusions	12
Исключения	12
Отказ от ответственности	12
ФОТОГРАФИИ	13
КОНТАКТЫ	20

Контактная информация	20
Телефоны	20
Время работы	20
Адрес	20

ХАРАКТЕРИСТИКИ

Обзор

Juliette has the popular 2 Stateroom layout with Master Island Berth forward. Her C-7 Caterpillar engines have only 445 hours. Some recent upgrades are New Veem Propellers and New electronics, Salon interior, SAT TV, dark blue hull repainted, and emeron painted engine room and lazarette. She is in extremely good condition and the owner will consider smaller trades.

Основная информация

Тип судна: Моторная яхта

Модельный год: 2006

Год постройки: 2006

Страна: United States

Размеры

Длина общая: 43' 0" (13.11m)

Ширина: 13' 2" (4.01m)

Макс. осадка: 3' 8" (1.12m)

Скорость, вместимость и масса

Макс. скорость: 28 Kts. (32 MPH)

Водоизмещение: 33000 Pounds

Вместимость воды: 110 Gallons

Объем топливного бака: 450 Gallons

Размещение

Всего кают: 2

Корпус и палуба

Материал корпуса: Fiberglass

Информация о двигателе

Двигатели: 2

Производитель: Caterpillar

Модель: C-7

Тип двигателя: Inboard

Тип топлива: Diesel

ПОДРОБНОЕ ОПИСАНИЕ

Recent Upgrades

2013

- SAT TV
- Garmin 7215
- Garmin Radar
- Garmin GPS
- Garmin Fish Finder
- Garmin Digital Depth
- Garmin VHF
- All new mattresses
- New Salon seating
- Salon HD TV
- Salon custom Honey Comb shades

2014

- Awlgrip painted engine room and lazarette
- LED Blue & White Cockpit lights

2015- New Veem Propellers

Accommodations

This beautifully appointed vessel boasts style and performance. Layout includes Master Stateroom forward and Guest Stateroom mid-ship. Open, light and bright Salon/Dinette includes fully enclosed Helm. Full Galley is down. Enclosed Head is to port and separate Shower Room is to starboard.

- Custom built Dinette.
- Neutral interior upholstery.
- Hand-rubbed teak woodwork throughout.
- Teak and holly sole throughout.
- Teak bulkheads.
- Vinyl headliner.

Salon/Dining

Salon/ Dinette include fully enclosed Helm.

- Large windows with panoramic views and new custom Honey Comb shades (2013).
- Port side settee with new neutral upholstery (2014) and storage under.
- Accent pillows.
- Bose Surround Sound system with Powerdamp in cabinet under settee.
- Starboard side custom Dinette.
 - Hi-lo expandable teak table.
 - Built-in custom cabinet with new 32" flat screen hide-away TV (2013)- electrically activated.
- Indirect lighting.
- Double full-length cabin entrance doors.
- Teak with non-skid steps.
- Engine Room access with pneumatic lift.
- Ladder to Engine Room.
- Carbon monoxide detector.

Helm Area

Fully enclosed Helm Area is forward of Salon/Dinette.

- Stidd Admiral Low Back neutral Leather Helm seat with deluxe chrome package.
- Double companion bench seat with neutral upholstery (2013) and teak base with footrest and storage below.
- Teak chart locker.
- Teak storage area.
- Teak Electronics Helm Station console.
- Stainless steel, teak trimmed steering wheel.

Galley

Galley is mid-ship down to port.

- Perlick Stainless Steel 2 drawer refrigerator/freezer.
- Princess (3) burner electric ceramic cooktop with hinged cover and with oven.
- Sharp Carousel microwave/convection oven.
- Silestone countertop and backsplash guard and teak trim.
- Double stainless steel sinks with Silestone cover.
- Single-lever faucet pull-out head with hose.
- (2) Large built-in countertop storage compartments with hinged Silestone covers.
- An abundant number of upper and lower storage cabinets and storage compartments.
- Large port light with curtains.
- Exhaust blower.
- Small pantry across from Galley.

Master Stateroom

The Master Stateroom is forward.

- Centerline queen island berth with 6" foam mattress (New 2013).
- Fitted bed cover with accent pillows.
- (2) Cedar-lined teak hanging lockers.
- Teak built-in upper storage cabinets port and starboard at gunwales.
- Teak built-in bed side shelf with cabinet storage port and starboard.
- Teak built-in bed side step port and starboard.
- Flat screen HDTV, with SAT hook up
- Reading lights.
- Overhead lighting.
- Large port lights with drapes.
- Overhead hatch.
- Marine Air digital air conditioner controls.
- Carbon monoxide detector.
- Teak privacy door.

Guest Stateroom

The Guest Stateroom is mid-ship to starboard.

- Fixed single lower berth with 5" foam mattress (New 2013).
- Sliding single upper berth with 4" foam mattress (New 2013).
- Cedar-lined teak hanging locker.
- Teak bureau with drawers.
- Storage compartments.
- Reading light at each berth.
- Large port light with drape.
- Marine Air digital air conditioner controls.
- Carbon monoxide detector.
- Teak privacy door.

Head

Port Side Head

- Sealand VacuFlush marine toilet.
- Teak vanity with Silestone countertop, stainless steel sink and storage cabinets below with built-in toilet paper holder.
- Single-lever faucet.
- Teak storage areas above sink.

- Exhaust blower.
- Teak privacy door.

Starboard Side Shower Room

- Separate shower room.
- Double teak topped seat.
- Shower water regulator and shower wand.
- Storage cabinet.
- Storage compartment.
- Drain pump.
- Large portal with curtain.
- Ventilation.
- Optional Corian tile flooring.
- Teak privacy door.

Electronics & Navigation

- Satellite TV (New 2013).
- Simrad AP25 Auto Pilot and Remote.
- Garmin 7215 (New 2013)
- Garmin Radar
- Garmin GPS
- Garmin Fishfinder
- Garmin Digital Depth (New 2013)
- Garmin VHF Radio (New 2013).
- Compass.
- CAT MAPD Analogue Engine Gauges and Instrumentation.
- Helm outlet.
- Rudder angle indicator.
- Tank gauges for fuel and water with alarms and Computank Digital Display System.
- Marine Air digital air conditioner control for Salon.

Electrical Equipment

- Onan 9kW Generator with sound shield.
- AGM Batteries: (1) 8D port, (2) 4D starboard/house, (1) 2D generator starting - with fiberglass boxes, lids and straps.
- Automatic 12v 50amp Battery charger.
- Battery condition indicator.
- Battery disconnect switch.
- Emergency paralleling battery switch.
- AC/DC distribution panels.

- Alarm and indicator panel.
- Galvanic isolator with monitor.
- Reverse polarity indicator light.
- GFCI protected outlets throughout.
- 50amp Shore power inlet upgraded with Glendinning Cablemaster.
- Xenon DC lighting.

Deck Equipment

- Optional Flagship Blue hull (Repainted Oct 2014).
- Awl-Grip painted boot stripe (Repainted Oct 2014).
- Painted cove stripe (Repainted Oct 2014).
- Epoxy barrier undercoat.
- Fiberglass and foam structural grid hull.
- Hydrex resin skin coat in hull lamination.
- Molded quarter guard rail with stainless steel rub rail.
- Solid fiberglass hull below waterline only; PVC foam-cored above.
- Non-skid Awl-Grip side and forward cabin house deck and hard top.
- Tempered glass windows with 3M tint.
- Tempered glass center opening windshield with stainless steel frame and electric actuator.
- Windshield wipers with speed control, auto-park and washers.
- Stainless steel portals with screens.
- Skylight hatches with screens and blinds in cabins.
- Custom window Honey Comb sunshade covers (New 2013) allowing light in and keeping heat out.
- All teak Cockpit sole and boarding treads.
- Cockpit molded fiberglass port and starboard aft-facing seats with cushions and under-seat storage.
- Triple lazarette compartment built into Cockpit floor (Awlgrip paint (New Oct 2014).
- Wide side decks.
- Swim ladder.
- Teak swim platform.
- Transom door.
- Hot /cold transom shower with retractable hose.
- New LED blue & white Cockpit lights (Oct 2014)
- Courtesy lights.
- Navigation lights.
- Teak Navigation light boards.
- Kahlenberg air horn.
- Stainless steel anchor.
- Maxwell vertical, low profile windlass with chain/rode.
- Self-draining anchor chain locker.
- Stainless steel anchor chute.

- Single stainless steel anchor roller.
- Stainless steel chocks and mooring cleats.
- Fender cleats.
- Fresh water wash down.
- Stainless steel grab rails.
- Heavy-duty vinyl rub rail with stainless steel insert.
- Rail gates at port and starboard.
- Stainless steel safety rails with intermediate 1/2 inch OD tube.
- Teak toe rail.
- Aluminum, hinged Mast.
- Radar bracket.
- Bow and stern flag pole holders.

Mechanical Equipment

- Twin 455hp Caterpillar C-7 diesel engines – 445 hours. Both engines have had the factory upgrade for the after-cooler issues.
- Single station Engine start/stop with synchronizer and slow-vessel-mode controls.
- Kobelt 2048 single-lever, mechanical engine controls.
- New Veem Propellers replaced in 2015 for better performance of speed (Increased by 2 knts) and fuel efficiency
- Vetus bow thruster.
- Marine Air air conditioning system.
- Manual bilge pump.
- Automatic bilge pumps.
- Reverso oil change system.
- Fuel filters.
- Racor water separators on each engine and generator (single).
- Trim tabs.
- Fireboy fire extinguisher with engine shut downs, generator and override control.
- Aluminum, baffled, epoxy coated fuel tank.
- Gas/water separator on generator exhaust system.
- Nibral propellers.
- Groco SD2000 Safety Seacocks on engine raw water inlets.
- Dripless shaft log.
- Hynautic Marine hydraulic steering.
- Painted aluminum water tanks.
- Pressurized fresh water system.
- 11 gal. Water heater.
- Sealand Vacu-Flush system with holding tank and direct discharge with Y-valves.
- Holding tank level indicators.
- Engine Room blowers.

Broker Remarks

Juliette has the popular 2 Stateroom layout with Master Island Berth forward. Her C-7 Caterpillar engines have only 445 hours. Some recent upgrades are New electronics, Salon interior, SAT TV and more. She is in extremely good condition and the owner will consider smaller trades.

Exclusions

Personal Items.

Исключения

При продаже яхты исключаются личные вещи владельца.

Отказ от ответственности

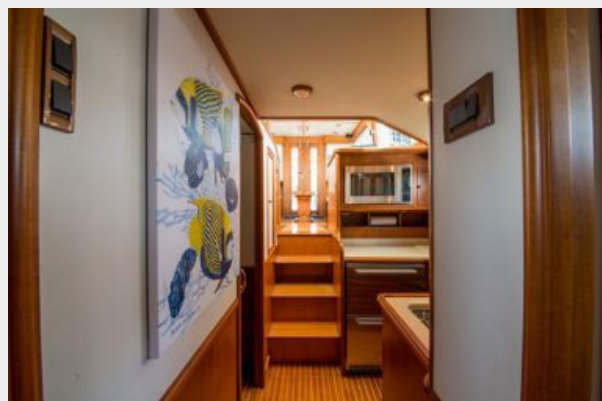
Компания предоставляет описание судна или яхты добросовестно, но не может гарантировать точность этой информации, а также не ручается за техническое состояние. Покупатель должен проинструктировать своих агентов или оценщиков исследовать представленную информацию более подробно, по собственному желанию. Продажа судна или яхты, изменение цены или снятие с продажи будет происходить без предварительного уведомления.

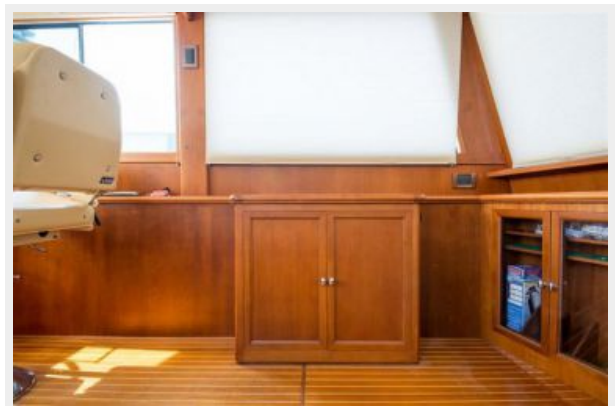
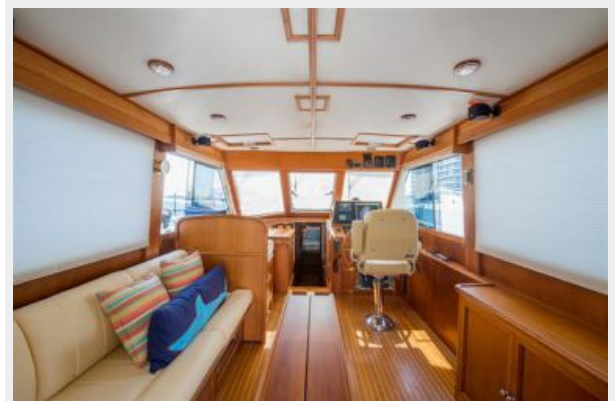
ФОТОГРАФИИ

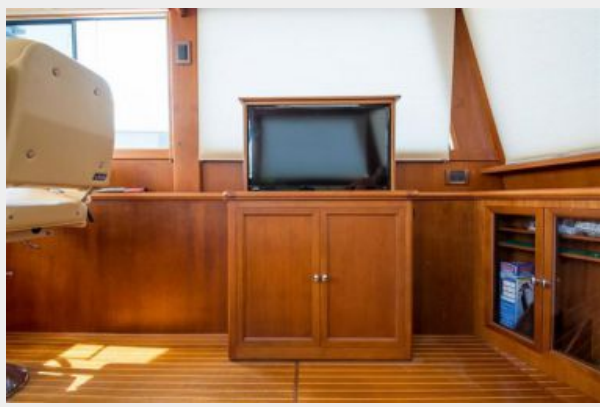


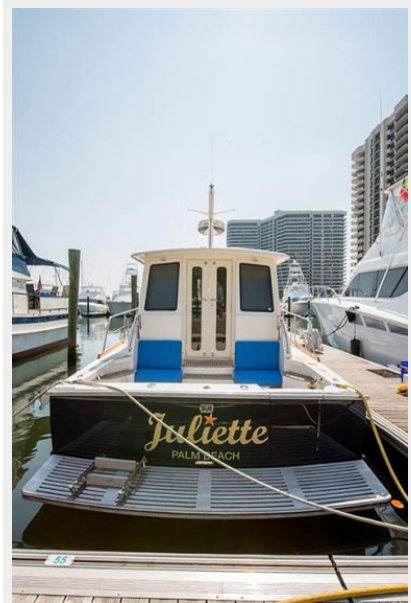
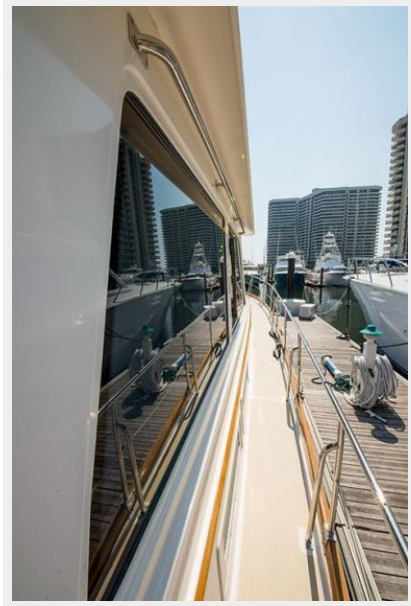












КОНТАКТЫ

Андрей Шестаков (Andrey Shestakov) – ведущий яхтенный брокер отдела продаж яхт и судов компании Shestakov Yacht Sales Inc. Официальный представитель Shestakov Yacht Sales Inc. для русскоговорящих клиентов в центральном офисе компании в Майами/Форт Лодердейл/Флорида/США.

Контактная информация

Email: andrey@shestakovyachtsales.com

Web: shestakovyachtsales.com

Телефоны

Краснодарский край: **+7(918)465-66-44**

США, Майами, Флорида: **+1(954)274-4435**

Время работы

Понедельник – Суббота: **9:00 - 21:00**
EDT

Воскресенье: **Закрито**

Адрес



Harbour Towne Marina, 850 NE 3rd St,
STE 213, Dania, FL 33004