

TROPIXZONE — HATTERAS



Builder: HATTERAS

Year Built: 1986

Model: Motor Yacht

Price: PRICE ON APPLICATION

Location: United States

LOA: 69' 0" (21.03m)

Beam: 18' 2" (5.54m)

Max Draft: 4' 11" (1.50m)

Cruise Speed: 14 Kts. (16 MPH)

Max Speed: 19 Kts. (22 MPH)

Our experienced yacht broker, Andrey Shestakov, will help you choose and buy a yacht that best suits your needs **Tropixzone — HATTERAS** from our catalogue. Presently, at Shestakov Yacht Sales Inc., we have a wide variety of yachts available on our sale's list. We also work in close contact with all the big yacht manufacturers from all over the world.

If you would like to buy a yacht **Tropixzone — HATTERAS** or would like help answering any questions concerning purchasing, selling or chartering a yacht, please call **+1(954)274-4435**

TABLE OF CONTENTS

TABLE OF CONTENTS	2
SPECIFICATIONS	4
Overview	4
Basic Information	4
Dimensions	4
Speed, Capacities and Weight	4
Accommodations	5
Hull and Deck Information	5
Engine Information	5
DETAILED INFORMATION	6
Electronics	6
Electrical Equipment	6
Exterior	7
Cockpit	7
Aft Deck	7
Fly Bridge	7
Interior	8
Lower Helm	8
Machinery, Generators, Engines	8
Walk Thru	8
Exclusions	9
Disclaimer	9
PHOTOS	10
Salon	10
Salon	10
Salon	10
Dinette	10
Galley - Dishwasher	10

Galley - Oven, Stove, Microwave	10
Galley - Refrigerator	11
Aft Enclosed Flybridge	11
Back Deck	11
Flybridge Helm	11
Looking at Bow	11
Flybridge	11
Master Stateroom	12
Master Stateroom	12
Forward VIP EnSuite	12
Master Stateroom EnSuite	12
Pilothouse Controls	12
Pilothouse Controls	12
Pilothouse	13
Pilothouse Seating	13
Radar Arch	13
CONTACTS	14
Contact details	14
Telephones	14
Office hours	14
Address	14

SPECIFICATIONS

Overview

Hatteras Yachts was born out of the treacherous waters that surround Cape Hatteras. It was here, in the fabled Graveyard of the Atlantic, that Willis Slane was inspired to construct a yacht to conquer seas subject to the wrath of nature. Over 50 years later, perseverance to achieve excellence is more than tradition - it is the Hatteras promise.

Basic Information

Category: Motor Yacht

Sub Category: Flybridge

Model Year: 1986

Year Built: 1986

Country: United States

Fly Bridge: Yes

Dimensions

LOA: 69' 0" (21.03m)

Beam: 18' 2" (5.54m)

Max Draft: 4' 11" (1.50m)

Clearance: 18' 10" (5.74m)

Speed, Capacities and Weight

Cruise Speed: 14 Kts. (16 MPH)

Cruise Speed RPM: 1850 Kts.

Max Speed: 19 Kts. (22 MPH)

Max Speed RPM: 2300 Kts.

Displacement: 79000 Pounds

Water Capacity: 335 Gallons

Holding Tank: 210 Gallons

Fuel Capacity: 1633 Gallons

Accommodations

Total Cabins: 3

Total Heads: 3

Hull and Deck Information

Hull Material: Fiberglass

Hull Finish: Other

Engine Information

Manufacturer: GM

Model: 8V-92TI

Engine Type: Inboard

Fuel Type: Diesel

DETAILED INFORMATION

Electronics

- Depthsounder - Datamarine
- Radar - Furuno
- Log-Speedometer - Datamarine
- TV Set - Hitachi Flat Screen
- Plotter - in GPS
- DVD Player - JSI
- Autopilot - Simrad AP 26
- Radio - Hitachi AV & Harman Receiver
- Compass - 7
- GPS - Northstar 951X
- VHF - Icom IC-M127
- Cockpit Speakers - Sound System throughout with separate volume controls

Electrical Equipment

- Dishwasher - GE
- Washing Machine - Kenmore
 - Oven - 4-burner, electric, GE
 - Microwave Oven - GE
 - Air Conditioning - CruiseAir
 - Heating
 - Hot Water - Bradford White, 40 gal
 - Refrigerator - GE
 - Fresh Water Maker - Sea Recovery

- Deep Freezer - GE
- Battery Charger - 20 amp Raritan & 30 amp Sentry
- Shore Power Inlet - 2, 50 amp
- Generator - ONAN & Northern Lights
- Inverter - Heart "Freedom 20", 2000 Watts

Exterior

The vessel comes with the standard layout of a 58 foot motor yacht with the addition of an eleven foot cockpit extension. The anchor windlass is securely installed forward on the centerline with local and remote controls, access to the chain locker is through the lockers doors in the forward bulkhead of the forward cabin. Aft of the windlass is a built in seat with a lounge area aft of that. There are port and starboard deck storage boxes and fender holders on the fore deck.

Cockpit

There are lockers around the cockpit with a deck shower aft to starboard. A large deck hatch gives good access to the large storage area below the cockpit. There is a lot of space that can be used for storage. There are lift-out stainless steel rails aft and open pass thru's with chains for access to the swim platform. The stairway up to the aft deck is forward to starboard.

Aft Deck

The aft deck is fully enclosed and air conditioned and comes with a large built-in seat with storage below aft of the large table. The forward console has the ice-maker, sink, storage and air conditioning unit all install in it. The starboard console has storage drawers in it. The ladder up to the flybridge is to port and there are port and starboard doors for access to the side decks.

Fly Bridge

The helm was found on the centerline with all engine controls, gauges and electronics all easy to

hard. The davit is aft to starboard and there are dinghy chocks securely installed all the way aft.

Interior

The interior comes with the standard layout that includes a good sized salon with good seating and storage. The salon is open to the lower helm. The galley is down to port and is equipped with decent appliances. Opposite to starboard is a dining table with seating for four. The forward cabin comes with upper and lower single berths, good storage, and the head with separate shower stall is aft to port. There is a passageway leading aft from the galley in which the washing machine and dryer are installed in a locker to starboard and a guest head aft of this with separate shower stall. Opposite to port is another guest cabin which comes with inboard and outboard single beds and good storage. All the way aft is the master stateroom that has a queen sized berth and good storage. The head is forward to starboard with a walk in closet opposite to port. There is a small built-in sofa aft to starboard and this cabin comes with two emergency escape hatches in the transom that opens into the cockpit.

Lower Helm

This is located forward of and open to the salon. All engine controls, gauges and electronics are easy to hand. Visibility is adequate from this station. There are port and starboard sliding doors for access to the side decks.

Machinery, Generators, Engines

The two generators are installed in the generator room below the galley and dining area sole. The shore transformers, air conditioning compressors and water maker are all installed in this area. This vessel comes with the standard split engine rooms for the main engines and are accessed from the passageway. There is good access to all of the machinery to carry out all service work.

Walk Thru

Entering thru the Starboard Pilothouse door, you enter the Main Salon. As you walk down the stairs from the Pilothouse, you enter the Galley. The Master Stateroom is larger than in most 70' yachts with En-suite located starboard. Just forward are the Engine Room doors. The VIP stateroom is located to Port, forward of the engines. The forward Guest Stateroom is located forward of the Galley with a full En-suite. The Flybridge is up from the Pilothouse and is a great for entertaining with a terrific 360 degrees of visibility.

Exclusions

Owner's personal belongings.

Disclaimer

The Company offers the details of this vessel or yacht in good faith but cannot guarantee or warrant the accuracy of this information nor warrant the condition of the vessel. A buyer should instruct his representatives, agents, or his surveyors, to investigate such details as the buyer desires validated. This vessel or yacht is offered subject to prior sale, price change, or withdrawal without notice.

PHOTOS

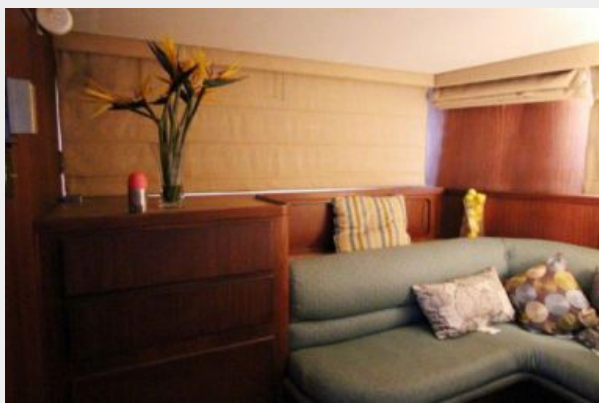
Salon



Salon



Salon



Dinette



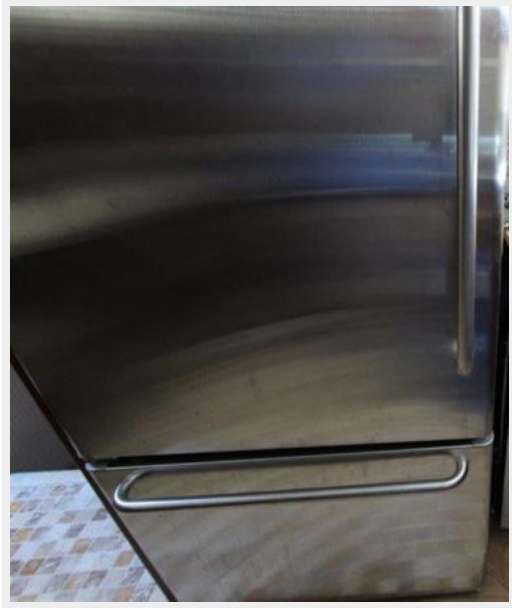
Galley - Dishwasher



Galley - Oven, Stove, Microwave



Galley - Refrigerator



Aft Enclosed Flybridge



Back Deck



Flybridge Helm



Looking at Bow



Flybridge



Master Stateroom



Master Stateroom



Master Stateroom EnSuite



Forward VIP EnSuite



Pilothouse Controls



Pilothouse Controls



Pilothouse



Pilothouse Seating



Radar Arch



CONTACTS

Andrey Shestakov, leading yacht broker of the sales department of Shestakov Yacht Sales Inc. Shestakov Yacht Sales Inc., the official representative of the Miami/Fort Lauderdale FL headquarters.

Contact details

Email: andrey@shestakovyachtsales.com

Web: shestakovyachtsales.com/en/

Telephones

USA: +1(954)274-4435

Office hours

Monday – Saturday: **9:00 - 21:00** EDT

Sunday: **closed**

Address



Harbour Towne Marina, 850 NE 3rd St,
STE 213, Dania, FL 33004