

## TROPIXZONE — HATTERAS



**Судостроитель:** HATTERAS

**Год постройки:** 1986

**Модель:** Моторная яхта

**Цена:** **ЦЕНА ЯХТЫ ПО ЗАПРОСУ**

**Местонахождение:** United States

**Длина общая:** 69' 0" (21.03m)

**Ширина:** 18' 2" (5.54m)

**Макс. осадка:** 4' 11" (1.50m)

**Крейс. скорость:** 14 Kts. (16 MPH)

**Макс. скорость:** 19 Kts. (22 MPH)

Купить Tropixzone — HATTERAS а также выбрать подходящую вам яхту из нашего каталога яхт вам поможет опытный яхтенный брокер Андрей Шестаков. На сегодняшний день компания Shestakov Yacht Sales Inc. имеет большое количество яхт в собственном списке продаж, а также тесно сотрудничает со всеми крупными яхтенными производителями по всему миру.

Для того чтобы купить яхту Tropixzone — HATTERAS а также проконсультироваться по любому вопросу связанному с покупкой, продажей, чартером яхт позвоните по телефону **+7(918)465-66-44**.

# ОГЛАВЛЕНИЕ

---

ОГЛАВЛЕНИЕ	2
ХАРАКТЕРИСТИКИ	4
Обзор	4
Основная информация	4
Размеры	4
Скорость, вместимость и масса	4
Размещение	5
Корпус и палуба	5
Информация о двигателе	5
ПОДРОБНОЕ ОПИСАНИЕ	6
Electronics	6
Electrical Equipment	6
Exterior	7
Cockpit	7
Aft Deck	7
Fly Bridge	7
Interior	8
Lower Helm	8
Machinery, Generators, Engines	8
Walk Thru	8
Исключения	9
Отказ от ответственности	9
ФОТОГРАФИИ	10
Salon	10
Salon	10
Salon	10
Dinette	10
Galley - Dishwasher	10

---

Galley - Oven, Stove, Microwave	10
Galley - Refrigerator	11
Aft Enclosed Flybridge	11
Back Deck	11
Flybridge Helm	11
Looking at Bow	11
Flybridge	11
Master Stateroom	12
Master Stateroom	12
Forward VIP EnSuite	12
Master Stateroom EnSuite	12
Pilothouse Controls	12
Pilothouse Controls	12
Pilothouse	13
Pilothouse Seating	13
Radar Arch	13
<b>КОНТАКТЫ</b>	<b>14</b>
Контактная информация	14
Телефоны	14
Время работы	14
Адрес	14

---

# ХАРАКТЕРИСТИКИ

## Обзор

Hatteras Yachts was born out of the treacherous waters that surround Cape Hatteras. It was here, in the fabled Graveyard of the Atlantic, that Willis Slane was inspired to construct a yacht to conquer seas subject to the wrath of nature. Over 50 years later, perseverance to achieve excellence is more than tradition - it is the Hatteras promise.

## Основная информация

<b>Тип судна:</b> Моторная яхта	<b>Подкатегория:</b> Flybridge
<b>Модельный год:</b> 1986	<b>Год постройки:</b> 1986
<b>Страна:</b> United States	<b>Открытая палуба мостика:</b> Да

## Размеры

<b>Длина общая:</b> 69' 0" (21.03m)	<b>Ширина:</b> 18' 2" (5.54m)
<b>Макс. осадка:</b> 4' 11" (1.50m)	<b>Трапы:</b> 18' 10" (5.74m)

## Скорость, вместимость и масса

<b>Крейс. скорость:</b> 14 Kts. (16 MPH)	<b>Крейсерская скорость поворота:</b> 1850 Kts.
<b>Макс. скорость:</b> 19 Kts. (22 MPH)	<b>Макс. скорость поворота:</b> 2300 Kts.
<b>Водоизмещение:</b> 79000 Pounds	<b>Вместимость воды:</b> 335 Gallons
<b>Вместимость сточного бака:</b> 210 Gallons	<b>Объем топливного бака:</b> 1633 Gallons

## Размещение

---

Всего кают: 3

Всего ком. состава: 3

## Корпус и палуба

---

Материал корпуса: Fiberglass

Отделка корпуса: Other

## Информация о двигателе

---

Производитель: GM

Модель: 8V-92TI

Тип двигателя: Inboard

Тип топлива: Diesel

---

# ПОДРОБНОЕ ОПИСАНИЕ

---

## Electronics

---

- Depthsounder - Datamarine
- Radar - Furuno
- Log-Speedometer - Datamarine
- TV Set - Hitachi Flat Screen
- Plotter - in GPS
- DVD Player - JSI
- Autopilot - Simrad AP 26
- Radio - Hitachi AV & Harman Receiver
- Compass - 7
- GPS - Northstar 951X
- VHF - Icom IC-M127
- Cockpit Speakers - Sound System throughout with separate volume controls

## Electrical Equipment

---

- Dishwasher - GE
- Washing Machine - Kenmore
  - Oven - 4-burner, electric, GE
  - Microwave Oven - GE
  - Air Conditioning - CruiseAir
  - Heating
  - Hot Water - Bradford White, 40 gal
  - Refrigerator - GE
  - Fresh Water Maker - Sea Recovery

- Deep Freezer - GE
- Battery Charger - 20 amp Raritan & 30 amp Sentry
- Shore Power Inlet - 2, 50 amp
- Generator - ONAN & Northern Lights
- Inverter - Heart "Freedom 20", 2000 Watts

## Exterior

---

The vessel comes with the standard layout of a 58 foot motor yacht with the addition of an eleven foot cockpit extension. The anchor windlass is securely installed forward on the centerline with local and remote controls, access to the chain locker is through the lockers doors in the forward bulkhead of the forward cabin. Aft of the windlass is a built in seat with a lounge area aft of that. There are port and starboard deck storage boxes and fender holders on the fore deck.

## Cockpit

---

There are lockers around the cockpit with a deck shower aft to starboard. A large deck hatch gives good access to the large storage area below the cockpit. There is a lot of space that can be used for storage. There are lift-out stainless steel rails aft and open pass thru's with chains for access to the swim platform. The stairway up to the aft deck is forward to starboard.

## Aft Deck

---

The aft deck is fully enclosed and air conditioned and comes with a large built-in seat with storage below aft of the large table. The forward console has the ice-maker, sink, storage and air conditioning unit all install in it. The starboard console has storage drawers in it. The ladder up to the flybridge is to port and there are port and starboard doors for access to the side decks.

## Fly Bridge

---

The helm was found on the centerline with all engine controls, gauges and electronics all easy to

hard. The davit is aft to starboard and there are dinghy chocks securely installed all the way aft.

---

## Interior

---

The interior comes with the standard layout that includes a good sized salon with good seating and storage. The salon is open to the lower helm. The galley is down to port and is equipped with decent appliances. Opposite to starboard is a dining table with seating for four. The forward cabin comes with upper and lower single berths, good storage, and the head with separate shower stall is aft to port. There is a passageway leading aft from the galley in which the washing machine and dryer are installed in a locker to starboard and a guest head aft of this with separate shower stall. Opposite to port is another guest cabin which comes with inboard and outboard single beds and good storage. All the way aft is the master stateroom that has a queen sized berth and good storage. The head is forward to starboard with a walk in closet opposite to port. There is a small built-in sofa aft to starboard and this cabin comes with two emergency escape hatches in the transom that opens into the cockpit.

---

## Lower Helm

---

This is located forward of and open to the salon. All engine controls, gauges and electronics are easy to hand. Visibility is adequate from this station. There are port and starboard sliding doors for access to the side decks.

---

## Machinery, Generators, Engines

---

The two generators are installed in the generator room below the galley and dining area sole. The shore transformers, air conditioning compressors and water maker are all installed in this area. This vessel comes with the standard split engine rooms for the main engines and are accessed from the passageway. There is good access to all of the machinery to carry out all service work.

---

## Walk Thru

---

Entering thru the Starboard Pilothouse door, you enter the Main Salon. As you walk down the stairs from the Pilothouse, you enter the Galley. The Master Stateroom is larger than in most 70' yachts with En-suite located starboard. Just forward are the Engine Room doors. The VIP stateroom is located to Port, forward of the engines. The forward Guest Stateroom is located forward of the Galley with a full En-suite. The Flybridge is up from the Pilothouse and is a great for entertaining with a terrific 360 degrees of visibility.



---

## Исключения

---

При продаже яхты исключаются личные вещи владельца.

---

## Отказ от ответственности

---

Компания предоставляет описание судна или яхты добросовестно, но не может гарантировать точность этой информации, а также не ручается за техническое состояние. Покупатель должен проинструктировать своих агентов или оценщиков исследовать представленную информацию более подробно, по собственному желанию. Продажа судна или яхты, изменение цены или снятие с продажи будет происходить без предварительного уведомления.

# ФОТОГРАФИИ

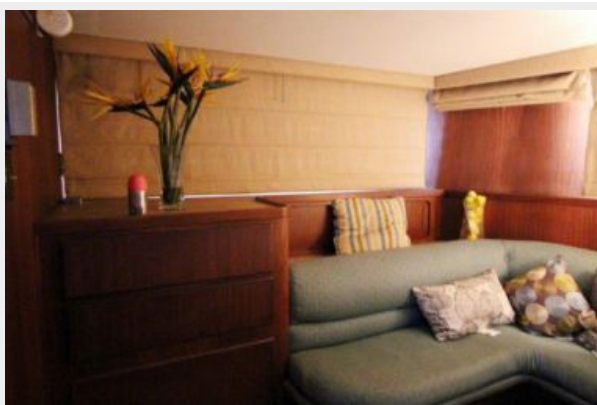
Salon



Salon



Salon



Dinette



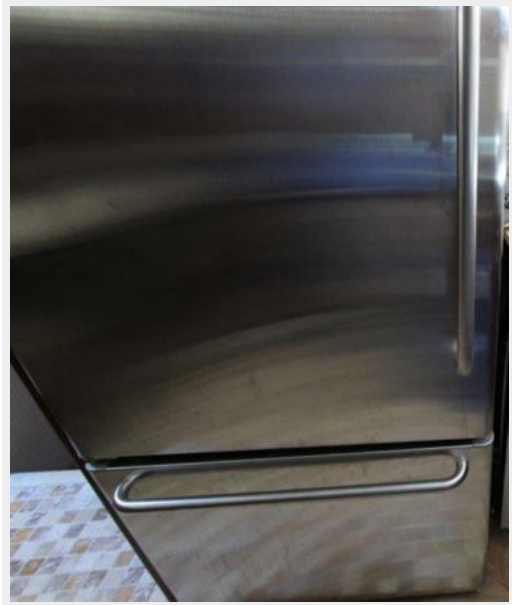
Galley - Dishwasher



Galley - Oven, Stove, Microwave



**Galley - Refrigerator**



**Aft Enclosed Flybridge**



**Back Deck**



**Flybridge Helm**



**Looking at Bow**



**Flybridge**





**Master Stateroom**



**Master Stateroom**



**Master Stateroom EnSuite**



**Forward VIP EnSuite**



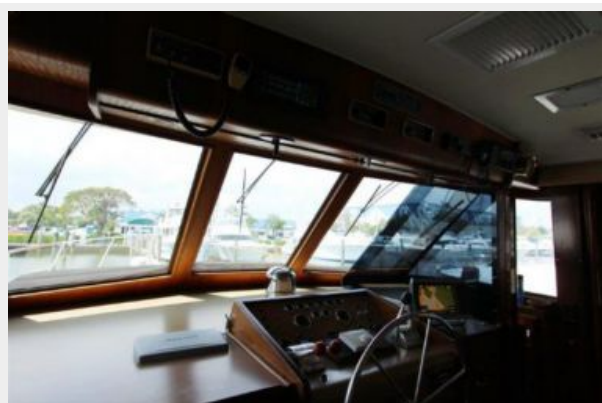
**Pilothouse Controls**



**Pilothouse Controls**



**Pilothouse**



**Pilothouse Seating**



**Radar Arch**



# КОНТАКТЫ

---

Андрей Шестаков (Andrey Shestakov) – ведущий яхтенный брокер отдела продаж яхт и судов компании Shestakov Yacht Sales Inc. Официальный представитель Shestakov Yacht Sales Inc. для русскоговорящих клиентов в центральном офисе компании в Майами/Форт Лодердейл/Флорида/США.

## Контактная информация

---

Email: [andrey@shestakovyachtsales.com](mailto:andrey@shestakovyachtsales.com)

Web: [shestakovyachtsales.com](http://shestakovyachtsales.com)

## Телефоны

---

Краснодарский край: **+7(918)465-66-44**

США, Майами, Флорида: **+1(954)274-4435**

## Время работы

---

Понедельник – Суббота: **9:00 - 21:00**  
EDT

Воскресенье: **Закрито**

## Адрес

---



Harbour Towne Marina, 850 NE 3rd St,  
STE 213, Dania, FL 33004