

FEZYWIG — LAGOON



Builder: LAGOON

Year Built: 2004

Model: Catamaran

Price: PRICE ON APPLICATION

Location: United States

LOA: 38' 0" (11.58m)

Beam: 21' 6" (6.55m)

Min Draft: 3' 9" (1.14m)

Our experienced yacht broker, Andrey Shestakov, will help you choose and buy a yacht that best suits your needs **FEZYWIG — LAGOON** from our catalogue. Presently, at Shestakov Yacht Sales Inc., we have a wide variety of yachts available on our sale's list. We also work in close contact with all the big yacht manufacturers from all over the world.

If you would like to buy a yacht **FEZYWIG — LAGOON** or would like help answering any questions concerning purchasing, selling or chartering a yacht, please call **+1(954)274-4435**

TABLE OF CONTENTS

TABLE OF CONTENTS	2
SPECIFICATIONS	3
Basic Information	3
Dimensions	3
Speed, Capacities and Weight	3
Accommodations	3
Hull and Deck Information	4
Engine Information	4
DETAILED INFORMATION	5
Overview	5
Accommodations	5
Galley	5
Cockpit & Deck	6
Engine and Mechanical	6
Navigation and Electronics	6
Rigging and Sails	7
Exclusions	8
Disclaimer	8
PHOTOS	9
CONTACTS	17
Contact details	17
Telephones	17
Office hours	17
Address	17

SPECIFICATIONS

Basic Information

Category: Catamaran

Sub Category: Motorsailor

Model Year: 2004

Year Built: 2004

Country: United States

Vessel Top: Hardtop

Cockpit: Yes

Dimensions

LOA: 38' 0" (11.58m)

LWL: 36' 0" (10.97m)

Beam: 21' 6" (6.55m)

Min Draft: 3' 9" (1.14m)

Clearance: 60' 0" (18.29m)

Speed, Capacities and Weight

Displacement: 15697 Pounds

Water Capacity: 160 Gallons

Holding Tank: 28 Gallons

Fuel Capacity: 52 Gallons

Accommodations

Total Cabins: 4

Total Berths: 4

Sleeps: 8

Total Heads: 2

Hull and Deck Information

Hull Material: GRP

Deck Material: GRP

Hull Configuration: Catamaran

Hull Color: WHITE

Hull Finish: Plastic

Engine Information

Engines: 2

Manufacturer: Yanmar

Model: 3YM30

Engine Type: Sail Drive

Fuel Type: Diesel

DETAILED INFORMATION

Overview

Undisputed world champion in its category, the Lagoon 380 is still going strong. It's fast, easy to maneuver and safe, and has a legion of fans spread across the world's oceans. **Fezywig** is part of the 380 series and with her comes Lagoon craftsmanship and expertise. A simple and efficient layout that allows you to move around easily and safely thanks to wide side decks and a rigid walkway on the trampoline. The cockpit transitions into an outdoor lounge area and the transom platforms allow for easy access to the sea.

The salon is rounded and guests are provided with 360° vision. Optimizing the design plan has set the galley between the cockpit and salon which allows for an open entertaining area. Below deck cabins are bathed in natural sunlight thanks to the large hull windows. The engine compartments are accessed through the transoms and are far from the living spaces and perfectly insulated.

Fezywig is a 4 cabin/2 head 2004 Lagoon 380 catamaran primed for cruising and is ready for her next captain or family and their journey of a lifetime. She's been lovingly maintained and is equipped with everything needed for safe and comfortable cruising. **Fezywig** has an outstanding charter history and great potential for charter revenue!

Accommodations

With a four cabin layout, everyone has a space where they can go for some privacy, peace and quiet. Each cabin includes huge amounts of storage space beneath each berth, shelves at the foot of each bed and lockers on both sides of the cabin. Hatches above and on both the outside and inside walls let in tons of light and are great for letting in all that fresh air. The starboard and port cabins are mirrors of each other. Each of the four guest cabins are beautifully appointed with subtle halogen lighting, cabin fans, opening ports & hatches, varnished mahogany and plenty of cupboard space. The beds are a generous 6'7" long. The two spacious shower/head combos (one port/one starboard) make for comfortable living with a full crew aboard. Appointed with shower, vanity unit & wash basin, cupboards, mirrors, and excellent lighting.

Galley

The galley has a large electrical fridge, keeping your provisions as fresh for the last day as when you arrive. Stove, oven, double sinks, plenty of storage space & counter tops ensure easy and practical meal preparation. The galley opens onto the cockpit, perfect for socializing! WAECO Coolmatic CR110 12V Fridge (new 2014)

2 Burner Propane Stove/Oven Combo

Stainless Steel Galley Sink

2x 10 lbs Propane Tank

Cockpit & Deck

Fezywig's cockpit has a large dining table with cushioned seating, which comfortably seats 6. A large bimini protects you from the hot sun. Twin step down transoms with swim ladder to port make for easy access to the water & dinghy. There is also a transom shower for quick wash-downs. Two large nets forward are perfect for sun-lounging. **Fezywig's** deck design is clean and remains uncluttered by unnecessary slopes, lines, and other obstacles found on other catamarans. The cleats are solid and substantial and well located. The bridge-deck clearance is high and this greatly reduces slamming and improves hull longevity. Anchors: Delta (1), Danforth (1), 180' chain rode

Electric windlass

Anchoring bridle

Engine and Mechanical

Fezywig has an excellent engine room design, which any owner will learn to appreciate. Located aft of the staterooms, the engine room is easy to access and offers a generous amount of room providing access to all engine components.

Four brand new batteries have been installed, 2 new engine starter batteries, and a Honda EU2000i Companion generator for reliable power, with quick charge times thanks to 2 in-line battery chargers. A high capacity water maker has been installed that generates 30 gallons per hour with an installation that makes operation and maintenance easy.

ENGINES: 2x Yanmar 3YM30 (Stb/Prt) 27 HP DIESEL COOLING SYSTEM: Heat exchange
TYPE OF GEAR BOX(S): Sail drives **TYPE OF CONTROLS:** Volvo Penta **DRIVE TO PROP:** (2)
 Yanmar Sail drives **TYPE OF PROP:** (2) Two blade fixed prop

ELECTRICAL: 4 house batteries (4 x 100 amp), UPG (new 2014) 2 engine starter batteries (new 2014) 100 amp battery charger (new 2015) 20 amp battery charger (new 2014) Xantrex battery charge monitor (new 2014) 350W 110V Inverter 1000W 220V Inverter Shore Power Cable

WATER SYSTEM: MANUAL: Fresh water **PRESSURISED:** Fresh water **SEA WATER:** None
WATER HEATING SYSTEM: Yes

Navigation and Electronics

A new VHF radio with AIS receiving capability and MMSI broadcasting capability (for

emergency/distress broadcasting) was installed. The mast-top VHF antennae and cable as well as the mast top wind indicator have recently been upgraded. Also installed is a long-range WiFi booster to assure reliable internet connections from up to 1 mile off shore (connect as many devices as you like through the strong on-board hot spot). The Navigation system has been configured to be iPad compatible which allows you to use your chart plotter from anywhere on the boat! RayMarine SmartPilot ST6001 Autopilot

ST60+ Wind Indicator Read-out

ST60+ Tridata

Wind Indicator (new 2014)

CruiseRO Water SM30 (new 2014)

VHF Radio with AIS/MMSI (new 2014)

VHF Antenna (new 2014)

GPS Pucks (2)

iPad Based Navigation System (iPad not included)

FM/AM CD Stereo with Aux output

Rigging and Sails

The stresses on the rigging of a cruising catamaran are much greater than those experienced by a monohull vessel because it does not heel to port or starboard, thus the rigging and sails do not benefit from a "shock-absorbing" effect. That's why Lagoon calls upon the top specialists in the field to provide the most reliable and efficient equipment available.

Rig

TYPE: Sloop Rig

SPAR MAKER: Z Spar Red Label

SPAR MATERIAL: Aluminum

STANDING RIGGING: Stainless steel wire

LAST REPLACED: Original

RUNNING RIGGING: Cored braided line

MAINSAIL REEFING: Slab reefing

HEADSAIL ROLLER FURLING: Profurl

SPINNAKER POLE: None

Sails

MAIN: Neilpryde, 2014 New

GENOA: Neilpryde,

CRADLE BAG: Doyle

Winches

GENOA WINCHES: (2) Harken 40, 2 Speed, Self Tailing

HALYARD WINCHES: (1) Harken 32, 2 Speed, Self Tailing

Exclusions

Owner's personal belongings.

Disclaimer

The Company offers the details of this vessel or yacht in good faith but cannot guarantee or warrant the accuracy of this information nor warrant the condition of the vessel. A buyer should instruct his representatives, agents, or his surveyors, to investigate such details as the buyer desires validated. This vessel or yacht is offered subject to prior sale, price change, or withdrawal without notice.

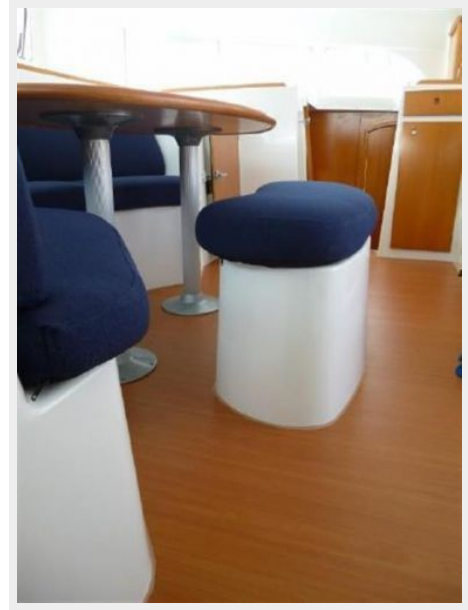
PHOTOS

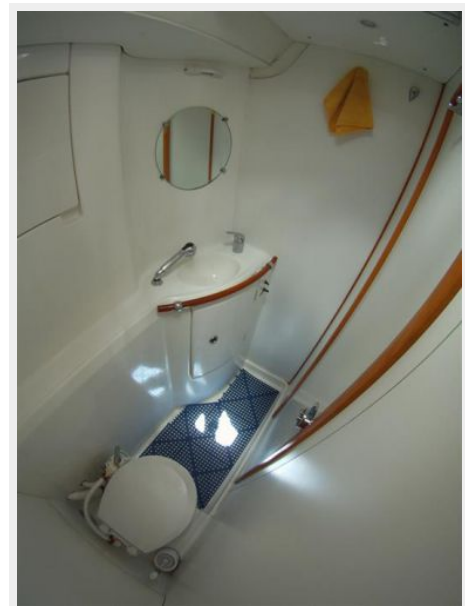




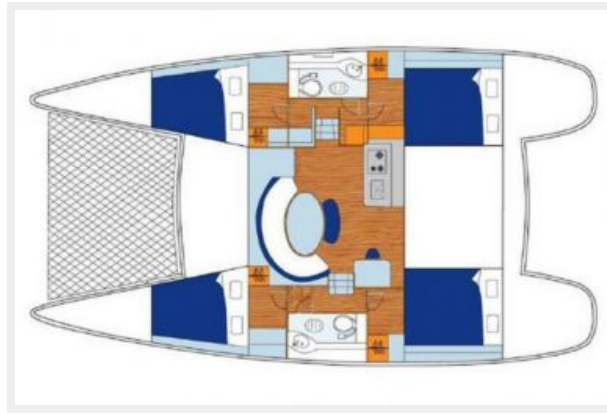












CONTACTS

Andrey Shestakov, leading yacht broker of the sales department of Shestakov Yacht Sales Inc. Shestakov Yacht Sales Inc., the official representative of the Miami/Fort Lauderdale FL headquarters.

Contact details

Email: andrey@shestakovyachtsales.com

Web: shestakovyachtsales.com/en/

Telephones

USA: +1(954)274-4435

Office hours

Monday – Saturday: **9:00 - 21:00** EDT

Sunday: **closed**

Address



Harbour Towne Marina, 850 NE 3rd St,
STE 213, Dania, FL 33004