

FEZYWIG — LAGOON



Судостроитель: LAGOON

Год постройки: 2004

Модель: Катамаран

Цена: ЦЕНА ЯХТЫ ПО ЗАПРОСУ

Местонахождение: United States

Длина общая: 38' 0" (11.58m)

Ширина: 21' 6" (6.55m)

Мин. осадка: 3' 9" (1.14m)

Купить **FEZYWIG — LAGOON** а также выбрать подходящую вам яхту из нашего каталога яхт вам поможет опытный яхтенный брокер Андрей Шестаков. На сегодняшний день компания **Shestakov Yacht Sales Inc.** имеет большое количество яхт в собственном списке продаж, а также тесно сотрудничает со всеми крупными яхтенными производителями по всему миру.

Для того чтобы купить яхту **FEZYWIG — LAGOON** а также проконсультироваться по любому вопросу связанному с покупкой, продажей, чартером яхт позвоните по телефону **+7(918)465-66-44**.

ОГЛАВЛЕНИЕ

ОГЛАВЛЕНИЕ	2
ХАРАКТЕРИСТИКИ	3
Основная информация	3
Размеры	3
Скорость, вместимость и масса	3
Размещение	3
Корпус и палуба	4
Информация о двигателе	4
ПОДРОБНОЕ ОПИСАНИЕ	5
Overview	5
Accommodations	5
Galley	5
Cockpit & Deck	6
Engine and Mechanical	6
Navigation and Electronics	6
Rigging and Sails	7
Исключения	8
Отказ от ответственности	8
ФОТОГРАФИИ	9
КОНТАКТЫ	17
Контактная информация	17
Телефоны	17
Время работы	17
Адрес	17

ХАРАКТЕРИСТИКИ

Основная информация

Тип судна: Катамаран

Подкатегория: Моторный парусник

Модельный год: 2004

Год постройки: 2004

Страна: United States

Верх: Hardtop

Кубрик: Да

Размеры

Длина общая: 38' 0" (11.58m)

Длина по ватерлинии: 36' 0" (10.97m)

Ширина: 21' 6" (6.55m)

Мин. осадка: 3' 9" (1.14m)

Трапы: 60' 0" (18.29m)

Скорость, вместимость и масса

Водоизмещение: 15697 Pounds

Вместимость воды: 160 Gallons

Вместимость сточного бака: 28 Gallons

Объем топливного бака: 52 Gallons

Размещение

Всего кают: 4

Всего коек: 4

Спальные места: 8

Всего ком. состава: 2

Корпус и палуба

Материал корпуса: GRP

Материал палубы: GRP

Комплектация корпуса: Катамаран

Цвет корпуса: WHITE

Отделка корпуса: Plastic

Информация о двигателе

Двигатели: 2

Производитель: Yanmar

Модель: 3YM30

Тип двигателя: Sail Drive

Тип топлива: Diesel

ПОДРОБНОЕ ОПИСАНИЕ

Overview

Undisputed world champion in its category, the Lagoon 380 is still going strong. It's fast, easy to maneuver and safe, and has a legion of fans spread across the world's oceans. **Fezywig** is part of the 380 series and with her comes Lagoon craftsmanship and expertise. A simple and efficient layout that allows you to move around easily and safely thanks to wide side decks and a rigid walkway on the trampoline. The cockpit transitions into an outdoor lounge area and the transom platforms allow for easy access to the sea.

The salon is rounded and guests are provided with 360° vision. Optimizing the design plan has set the galley between the cockpit and salon which allows for an open entertaining area. Below deck cabins are bathed in natural sunlight thanks to the large hull windows. The engine compartments are accessed through the transoms and are far from the living spaces and perfectly insulated.

Fezywig is a 4 cabin/2 head 2004 Lagoon 380 catamaran primed for cruising and is ready for her next captain or family and their journey of a lifetime. She's been lovingly maintained and is equipped with everything needed for safe and comfortable cruising. **Fezywig** has an outstanding charter history and great potential for charter revenue!

Accommodations

With a four cabin layout, everyone has a space where they can go for some privacy, peace and quiet. Each cabin includes huge amounts of storage space beneath each berth, shelves at the foot of each bed and lockers on both sides of the cabin. Hatches above and on both the outside and inside walls let in tons of light and are great for letting in all that fresh air. The starboard and port cabins are mirrors of each other. Each of the four guest cabins are beautifully appointed with subtle halogen lighting, cabin fans, opening ports & hatches, varnished mahogany and plenty of cupboard space. The beds are a generous 6'7" long. The two spacious shower/head combos (one port/one starboard) make for comfortable living with a full crew aboard. Appointed with shower, vanity unit & wash basin, cupboards, mirrors, and excellent lighting.

Galley

The galley has a large electrical fridge, keeping your provisions as fresh for the last day as when you arrive. Stove, oven, double sinks, plenty of storage space & counter tops ensure easy and practical meal preparation. The galley opens onto the cockpit, perfect for socializing! WAECO Coolmatic CR110 12V Fridge (new 2014)

2 Burner Propane Stove/Oven Combo

Stainless Steel Galley Sink

2x 10 lbs Propane Tank

Cockpit & Deck

Fezywig's cockpit has a large dining table with cushioned seating, which comfortably seats 6. A large bimini protects you from the hot sun. Twin step down transoms with swim ladder to port make for easy access to the water & dinghy. There is also a transom shower for quick wash-downs. Two large nets forward are perfect for sun-lounging. **Fezywig's** deck design is clean and remains uncluttered by unnecessary slopes, lines, and other obstacles found on other catamarans. The cleats are solid and substantial and well located. The bridge-deck clearance is high and this greatly reduces slamming and improves hull longevity. Anchors: Delta (1), Danforth (1), 180' chain rode

Electric windlass

Anchoring bridle

Engine and Mechanical

Fezywig has an excellent engine room design, which any owner will learn to appreciate. Located aft of the staterooms, the engine room is easy to access and offers a generous amount of room providing access to all engine components.

Four brand new batteries have been installed, 2 new engine starter batteries, and a Honda EU2000i Companion generator for reliable power, with quick charge times thanks to 2 in-line battery chargers. A high capacity water maker has been installed that generates 30 gallons per hour with an installation that makes operation and maintenance easy.

ENGINES: 2x Yanmar 3YM30 (Stb/Prt) 27 HP DIESEL COOLING SYSTEM: Heat exchange
TYPE OF GEAR BOX(S): Sail drives **TYPE OF CONTROLS:** Volvo Penta **DRIVE TO PROP:** (2)
Yanmar Sail drives **TYPE OF PROP:** (2) Two blade fixed prop

ELECTRICAL: 4 house batteries (4 x 100 amp), UPG (new 2014) 2 engine starter batteries (new 2014) 100 amp battery charger (new 2015) 20 amp battery charger (new 2014) Xantrex battery charge monitor (new 2014) 350W 110V Inverter 1000W 220V Inverter Shore Power Cable

WATER SYSTEM: MANUAL: Fresh water **PRESSURISED:** Fresh water **SEA WATER:** None
WATER HEATING SYSTEM: Yes

Navigation and Electronics

A new VHF radio with AIS receiving capability and MMSI broadcasting capability (for

emergency/distress broadcasting) was installed. The mast-top VHF antennae and cable as well as the mast top wind indicator have recently been upgraded. Also installed is a long-range WiFi booster to assure reliable internet connections from up to 1 mile off shore (connect as many devices as you like through the strong on-board hot spot). The Navigation system has been configured to be iPad compatible which allows you to use your chart plotter from anywhere on the boat! RayMarine SmartPilot ST6001 Autopilot

ST60+ Wind Indicator Read-out

ST60+ Tridata

Wind Indicator (new 2014)

CruiseRO Water SM30 (new 2014)

VHF Radio with AIS/MMSI (new 2014)

VHF Antenna (new 2014)

GPS Pucks (2)

iPad Based Navigation System (iPad not included)

FM/AM CD Stereo with Aux output

Rigging and Sails

The stresses on the rigging of a cruising catamaran are much greater than those experienced by a monohull vessel because it does not heel to port or starboard, thus the rigging and sails do not benefit from a "shock-absorbing" effect. That's why Lagoon calls upon the top specialists in the field to provide the most reliable and efficient equipment available.

Rig

TYPE: Sloop Rig

SPAR MAKER: Z Spar Red Label

SPAR MATERIAL: Aluminum

STANDING RIGGING: Stainless steel wire

LAST REPLACED: Original

RUNNING RIGGING: Cored braided line

MAINSAIL REEFING: Slab reefing

HEADSAIL ROLLER FURLING: Profurl

SPINNAKER POLE: None

Sails

MAIN: Neilpryde, 2014 New

GENOA: Neilpryde,

CRADLE BAG: Doyle

Winches

GENOA WINCHES: (2) Harken 40, 2 Speed, Self Tailing

HALYARD WINCHES: (1) Harken 32, 2 Speed, Self Tailing

Исключения

При продаже яхты исключаются личные вещи владельца.

Отказ от ответственности

Компания предоставляет описание судна или яхты добросовестно, но не может гарантировать точность этой информации, а также не ручается за техническое состояние. Покупатель должен проинструктировать своих агентов или оценщиков исследовать представленную информацию более подробно, по собственному желанию. Продажа судна или яхты, изменение цены или снятие с продажи будет происходить без предварительного уведомления.

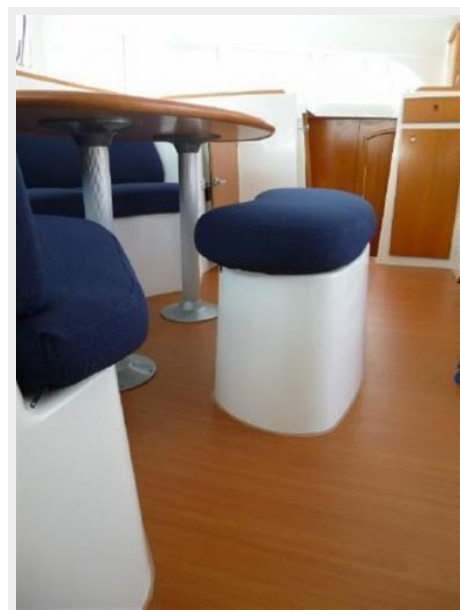
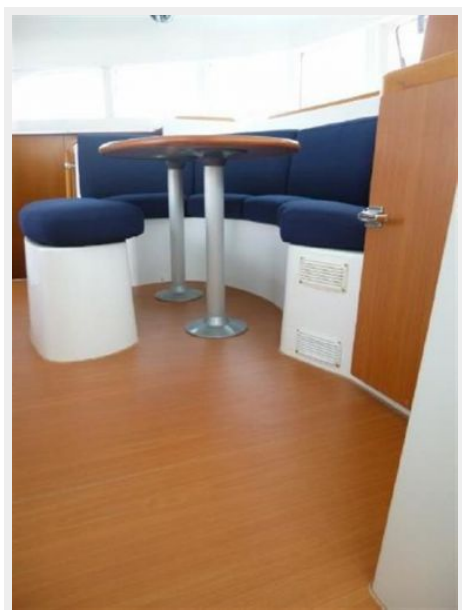
ФОТОГРАФИИ





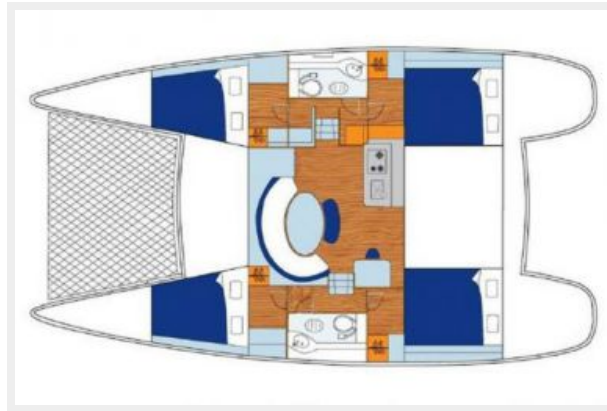












КОНТАКТЫ

Андрей Шестаков (Andrey Shestakov) – ведущий яхтенный брокер отдела продаж яхт и судов компании Shestakov Yacht Sales Inc. Официальный представитель Shestakov Yacht Sales Inc. для русскоговорящих клиентов в центральном офисе компании в Майами/Форт Лодердейл/Флорида/США.

Контактная информация

Email: andrey@shestakovyachtsales.com

Web: shestakovyachtsales.com

Телефоны

Краснодарский край: **+7(918)465-66-44**

США, Майами, Флорида: **+1(954)274-4435**

Время работы

Понедельник – Суббота: **9:00 - 21:00**
EDT

Воскресенье: **Закрето**

Адрес



Harbour Towne Marina, 850 NE 3rd St,
STE 213, Dania, FL 33004