

COLUMBUS 40S HYBRID — PALUMBO



Builder: PALUMBO

Year Built: 2013

Model: Motor Yacht

Price: PRICE ON APPLICATION

Location: France

LOA: 131' 3" (40.00m)

Beam: 26' 11" (8.20m)

Min Draft: 5' 9" (1.75m)

Max Draft: 5' 9" (1.75m)

Cruise Speed: 15 Kts. (17 MPH)

Max Speed: 22 Kts. (25 MPH)

Our experienced yacht broker, Andrey Shestakov, will help you choose and buy a yacht that best suits your needs **COLUMBUS 40S HYBRID — PALUMBO** from our catalogue. Presently, at Shestakov Yacht Sales Inc., we have a wide variety of yachts available on our sale's list. We also work in close contact with all the big yacht manufacturers from all over the world.

If you would like to buy a yacht **COLUMBUS 40S HYBRID — PALUMBO** or would like help answering any questions concerning purchasing, selling or chartering a yacht, please call **+1(954)274-4435**

TABLE OF CONTENTS

TABLE OF CONTENTS	2
SPECIFICATIONS	3
Overview	3
Basic Information	3
Dimensions	3
Speed, Capacities and Weight	3
Accommodations	4
Hull and Deck Information	4
Engine Information	4
DETAILED INFORMATION	5
DESCRIPTION	5
HOW HYBRID WORKS?	6
Exclusions	6
Disclaimer	6
PHOTOS	7
CONTACTS	10
Contact details	10
Telephones	10
Office hours	10
Address	10

SPECIFICATIONS

Overview

Basic Information

Category: Motor Yacht

Sub Category: Sky Lounge

Model Year: 2014

Year Built: 2013

Country: France

Dimensions

LOA: 131' 3" (40.00m)

LWL: 119' 6" (36.40m)

Beam: 26' 11" (8.20m)

Min Draft: 5' 9" (1.75m)

Max Draft: 5' 9" (1.75m)

Speed, Capacities and Weight

Cruise Speed: 15 Kts. (17 MPH)

Cruise Speed RPM: 1800 Kts.

Cruise Speed Range: 2500

Max Speed: 22 Kts. (25 MPH)

Max Speed RPM: 2500 Kts.

Displacement: 385808.9585 Pounds

Gross Tonnage: 385 Pounds

Water Capacity: 1505.7806964 Gallons

Holding Tank: 999.89121682 Gallons

Fuel Capacity: 11095.226184 Gallons

Fuel Consumption: 59.4387117 Gallons

Accommodations

Total Cabins: 5

Total Berths: 10

Sleeps: 10

Total Heads: 7

Captain Cabin: True

Crew Cabin: 4

Crew Berths: 7

Crew Sleeps: 7

Hull and Deck Information

Hull Material: Aluminum

Deck Material: Teak

Hull Configuration: Semi-Displacement

Hull Color: Silver Grey

Hull Designer: Hydro Tec

Exterior Designer: Hydro Tec

Interior Designer: Hot Lab Yacht & Design

Engine Information

Engines: 2

Manufacturer: MTU

Model: 12V2000M94

Engine Type: Inboard

Fuel Type: Diesel/Electric

DETAILED INFORMATION

DESCRIPTION

This highly innovative, technologically advanced yacht features a hybrid propulsion system, combining **high performance** with **low fuel consumption**. With an elegant exterior design and vast deck areas, combined with a spacious modern, light interior, this exceptional yacht is perfectly suited for cruising in comfort and style.

Key features

- Multiple 2014 Showboat Design Winner
- Advanced hybrid propulsion with top speed of region 20 knots and economical speed of 8 knots (electric)
- Panoramic and spacious bridge deck with aft sky lounge
- Spacious master cabin on main deck and four guest cabins on lower deck
- Aluminium hull and superstructure
- Designated aft beach club area, side folding balconies and Jacuzzi forward
- Zero speed stabilizers
- Stunning modern & light interior design by Hot Lab
- Generator hours 430/430/220 as of September 2014
- Reduced fuel consumption and environmental impact with Green Star Plus Platinum RINA classification

The aim of the Sport Hybrid line is to provide owners with fast sporting yachts without forgoing the comfort, elegance and style of megayachts.

The sleek aggressive lines are designed to merge seamlessly with the environment and enhance the pleasure of luxury yachting in harmony with the sea. Sport indicates the high performances of this Superyacht, equipped with two diesel engines which will give a top speed of 20 knots, with the ability to cruise at 15 knots.

The Sport Hybrid Line is environmentally friendly and technologically advanced, providing a unique setting for Owners who wish to enjoy the sea while preserving the environment.

The Hull has been designed using CFD analysis and tank tests, in order to optimize the fuel consumption at low and medium speed without sacrificing performances at higher speeds.

40S Hybrid is powered with advanced hybrid propulsion, combining high performance, on a top speed of 23 knots with reduced environmental impact. The choice of using a hybrid system was the result of a deep study done from Palumbo shipyard together with RINA classification society, which let the Columbus Sport hybrid 40m be the first yacht with the Hybrid Propulsion as an additional notation class issued by RINA: EFP Hybrid Propulsion (Y), Aut CCS (Y), Green Plus (Y) Platinum.

The Hybrid concept is a main improvement that, thanks to two electrical motors fitted on the gearboxes, allows the 40S Hybrid to cruise at 8 knots using only the gensets and the electrical motors. The electrical propulsion system EcoProp Hybrid will allow navigating at low speed with very limited consumption, high comfort and almost no noise.

On board you will be able to experience the thrill of performance and maximum comfort, typical of Hybrid yachts. The same hybrid power train can be used as shaft-generator using the excess power not used for diesel engines. The hybrid system will allow the yacht to cruise in extremely quiet and vibration-free conditions.

When cruising with the main engine, the two electrical motors will work as shaft generators allowing non-stop auxiliary generators during long transit.

HOW HYBRID WORKS?

ELECTRIC MODE In the electric mode, Main engines are switched off, electric Motors, powered by the generators on board, are connected to the gear boxes, making the shafts turning. **DIESEL MODE** In the diesel mode the Hybrid System is completely invisible with the on board plants, making the Hybrid propulsion system totally independent from the Hybrid one, allowing a "traditional" cruising. **SHAFT GENERATOR MODE** The electric motors are reversed to generate electricity, taking off power from the Main Engines. The major benefit of this mode is to reach a better electric generation efficiency by avoiding that the Diesel Generators work at low load (known bad condition in terms of efficiency)

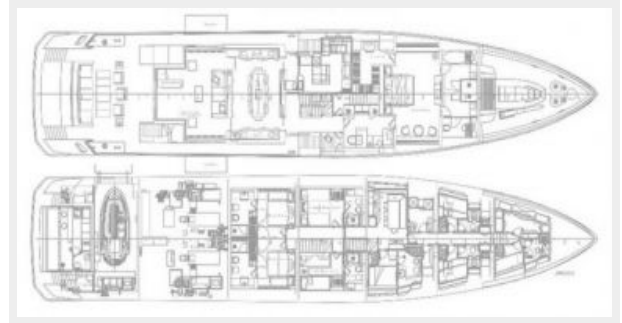
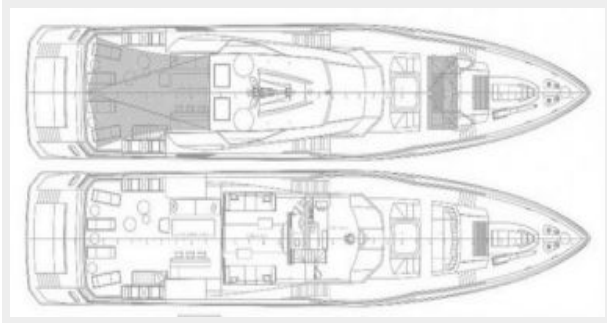
Exclusions

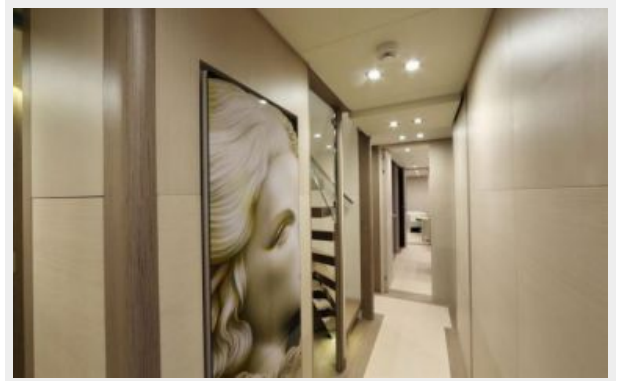
Owner's personal belongings.

Disclaimer

The Company offers the details of this vessel or yacht in good faith but cannot guarantee or warrant the accuracy of this information nor warrant the condition of the vessel. A buyer should instruct his representatives, agents, or his surveyors, to investigate such details as the buyer desires validated. This vessel or yacht is offered subject to prior sale, price change, or withdrawal without notice.

PHOTOS







CONTACTS

Andrey Shestakov, leading yacht broker of the sales department of Shestakov Yacht Sales Inc. Shestakov Yacht Sales Inc., the official representative of the Miami/Fort Lauderdale FL headquarters.

Contact details

Email: andrey@shestakovyachtsales.com

Web: shestakovyachtsales.com/en/

Telephones

USA: +1(954)274-4435

Office hours

Monday – Saturday: **9:00 - 21:00** EDT

Sunday: **closed**

Address



Harbour Towne Marina, 850 NE 3rd St,
STE 213, Dania, FL 33004