

## BREVITY — NAUTOR'S SWAN



**Судостроитель:** NAUTOR'S SWAN

**Год постройки:** 2007

**Модель:** Cruising/Racing Sailboat

**Цена:** ЦЕНА ЯХТЫ ПО ЗАПРОСУ

**Местонахождение:** United Kingdom

**Длина общая:** 42' 6" (12.95m)

**Ширина:** 12' 9" (3.89m)

**Мин. осадка:** 8' 9" (2.67m)

Купить **BREVITY — NAUTOR'S SWAN** а также выбрать подходящую вам яхту из нашего каталога яхт вам поможет опытный яхтенный брокер Андрей Шестаков. На сегодняшний день компания **Shestakov Yacht Sales Inc.** имеет большое количество яхт в собственном списке продаж, а также тесно сотрудничает со всеми крупными яхтенными производителями по всему миру.

Для того чтобы купить яхту **BREVITY — NAUTOR'S SWAN** а также проконсультироваться по любому вопросу связанному с покупкой, продажей, чартером яхт позвоните по телефону **+7(918)465-66-44**.

# ОГЛАВЛЕНИЕ

ОГЛАВЛЕНИЕ	2
ХАРАКТЕРИСТИКИ	3
Обзор	3
Основная информация	3
Размеры	3
Скорость, вместимость и масса	3
Размещение	3
Корпус и палуба	4
Информация о двигателе	4
ПОДРОБНОЕ ОПИСАНИЕ	5
Construction	5
Machinery	6
Electrical Systems	6
Plumbing Systems	7
Tankage	7
Navigation Equipment	8
Domestic Equipment	8
Accommodation	9
Deck Equipment	12
Исключения	16
Отказ от ответственности	16
ФОТОГРАФИИ	17
КОНТАКТЫ	25
Контактная информация	25
Телефоны	25
Время работы	25
Адрес	25

# ХАРАКТЕРИСТИКИ

## Обзор

Sparkling condition, professionally maintained with a full and recent inventory. Call for her full details or a viewing.

## Основная информация

Тип судна: Cruising/Racing Sailboat

Подкатегория: Крейсерская яхта

Модельный год: 2007

Год постройки: 2007

Страна: United Kingdom

## Размеры

Длина общая: 42' 6" (12.95m)

Длина по ватерлинии: 37' 0" (11.28m)

Ширина: 12' 9" (3.89m)

Мин. осадка: 8' 9" (2.67m)

## Скорость, вместимость и масса

Водоизмещение: 15983.513995 Pounds

Вместимость воды: 84.53505664 Gallons

Вместимость сточного бака:  
14.52946286 Gallons

Объем топливного бака: 36.98408728  
Gallons

## Размещение

Всего кают: 4

Всего коек: 10

Всего ком. состава: 1

## Корпус и палуба

---

**Материал корпуса:** Composite

**Отделка корпуса:** Polyethylene

**Дизайнер корпуса:** Frers Naval  
Architecture

## Информация о двигателе

---

**Двигатели:** 1

**Производитель:** Volvo Penta

**Модель:** D2-40 130S

**Тип двигателя:** Inboard

**Тип топлива:** Diesel

---

# ПОДРОБНОЕ ОПИСАНИЕ

---

## Construction

---

RCD Status: The yacht conforms with the essential safety requirements of Directive 94/25EC (Recreational Craft Directive) and is categorised A – “Ocean” (or Cat B – whichever is appropriate)

### *Hull, Deck & Superstructure Construction:*

- Infusion moulded E-glass / vinylester laminate with carbon reinforcements in selected areas.
- Sandwich with closed cell foam cored hull, with higher density foam in bottom and slamming areas.
- Fibre reinforcements are multiaxial and unidirectional. Structural bulkheads are of veneered sandwich construction or marine grade waterproof plywood. Watertight bulkhead at bow, drained fore peak. Bottom stiffeners reinforced with unidirectional carbon and multiaxial glassfibre in selected areas. GRP engine beds.
- Stainless chainplate deck fittings.
- Topsides gelcoat, dark blue hull with white stripes.
- Infusion moulded E-glass vinylester laminate sandwich deck with glass skins and closed cell foam core.
- High density core or compact laminate under winches and deck hardware as appropriate.
- 9mm teak on cockpit seats.
- Single colour white gelcoat with moulded in grey non-skid.

### *Keel & Rudder:*

- T-keel, steel fin with Antimoni alloy lead bulb and with upper flange recessed into hull, hi-tensile steel bolts.
- Epoxy coated.
- Faired to class tolerance.
- Single-point lift.

---

## Machinery

---

### *Engine & Gearboxes:*

- Volvo Penta D2-40 130 S marine diesel 29 kW 40 Hp (399.4 hours in March 2015)

### *Propulsion & Steering:*

- Foam filled rudder blade of GRP from female mould.
- Carbon/epoxy stock.
- Epoxy coated.
- An aluminium quadrant, wire steering with chain and sprocket, self-aligning rudder bearings.
- Roller bearing sheaves.
- Twin composite pedestals integrated with cockpit sole with twin carbon fibre wheels, diameter 0.95 m. Lightweight aluminium emergency tiller.
- Saildrive 2.19:1 and 2-blade 17" racing folding propeller.

---

## Electrical Systems

---

### *Voltage Systems:*

- Main distribution panel contains 12 V DC gauges and 110 V AC gauges and circuit breakers, lighted.
- Bottom of mast, shrouds and stays are grounded to the keel.
- 12 V DC insulated return system for lighting and general service.
- Main switchboard 12 V DC outboard of chart table.
- 12 V outlet at chart table.
- 110 V outlet at chart table (220 V for EU boats).
- GFI duplex receptacle.
- Inverter / battery charger.

*Battery Banks:*

- Service battery of AGM type 12 V 2 x 160 Ah in saloon table base.

*Battery Chargers:*

- Mastervolt Battery Charger with control at Chart Table

*Alternators:*

- 115 A alternator with an electronic sensor.

*Shore Power:*

- Shore power 110 V AC system (220 V AC for EU boats).
- 30 Amp shore power cord and inlet.

---

## Plumbing Systems

---

*Fresh Water & Water Heating System:*

- Back-up foot pump for fresh water and Oras single lever mixing faucets.
- Flush mounted composite closing sea cocks for all through hull fittings below waterline.

*Bilge Pumps:*

- Two manual and one electric bilge pump.

---

## Tankage

---

*Fuel:*

- 140 l fuel in two polyethene tanks. Tank level indication for fuel.

*Fresh water:*

- Fresh water 320 l in polyethene tanks. Pressurised hot and cold water.

*Grey/Blackwater holding tanks:*

- Y-valve in head, overboard discharge / holding tank.
- Flexible holding tank 55 l / 14.5 USg. Manual toilet discharging to holding tank. Tank emptied by hand pump or deck suction.

---

## Navigation Equipment

---

- 2 x SUUNTO magnetic compasses, mounted on each steering pedestal
- Furuno navnet Vx2 – CMP chartplotter.
- Full B&G H3000 FXD.
- JVC KDR401 CD player at chart table.
- Simrad RS82 VHF at chart table.

*Autopilot:*

- B&G Autopilot package.
- Pilot processor ACP1.
- Pilot display on deck.
- Hydraulic RAM-T@-12v.
- Rudder position sensor.

---

## Domestic Equipment

---

*Galley:*

- Two burner Origo 6000 gas stove with oven, protected by stainless steel guard.
- Stainless steel double sinks with fresh water tap.
- Formica counter tops and sink cover.



- Drawer and lockers.
- Top loading refrigerator 105 l gravity drained with valve.
- Rubbish bin.
- Battery driven refrigeration unit.

#### *Heads/Showers:*

- Jabsco Marine toilet, using sea water for toilet flushing.

#### *Heating & Ventilation:*

- Eberspacher heating in saloon.
- Engine space air inlet from deck.

#### *Lighting:*

- Red/green LED lights on pulpit.
- White stern LED light on pushpit.
- Steam light / deck light on forward side of mast.
- Recessed halogen dome lights overhead.
- Flexible chart light at navigation station.
- Red light above navigation station and in galley.

---

## **Accommodation**

---

#### *Summary of Accommodation:*

- Interior finish: teak with satin white GRP/canvas lining.
- Lockable plywood floorboards covered with bamboo veneer.
- Interior cushions with dark blue covers.
- Removable vinyl cover panels will provide access to deck hardware.

- Foam mattresses over Scandi-Flex battens.
- Canvas lee cloths for lower saloon and aft cabin berths.

#### *Hatches and Windows:*

- Anchor stowage hatch.
- One foredeck hatch Lewmar size 60.
- One saloon overhead hatch Lewmar size 44.
- One ventilation hatch in head Lewmar size 03.
- Four fixed coaming windows.
- Two openable coaming portholes - in aft, galley and navigation area.
- Four openable coaming portholes in cockpit for aft cabins.
- One hatch to lazarette.
- Main companionway sliding hatch garage flush with coach roof.
- The main companionway consists of removable plexiglass drop boards with designated stowage.

#### *Description of layout from forwards:*

##### *Forward Cabin:*

- Double berth with stowage under.
- Removable support structure for racing.
- Reading lights above the berth.
- Locker with shelves and doors.
- Shelves on hull sides.

##### *Head/Shower:*

- White GRP interior module with wash basin.
- Lockers outboards and doors in teak.
- Fresh water tap, shower, mirror and waste container.

#### *Aft Cabins:*

- 2 x aft cabins on port and starboard side.
- Double berths.
- Stowage under berths.
- Shelf on hull side.
- Hanging locker in starboard side cabin, locker with shelves in port side cabin.

#### *Saloon:*

- Folding leaf table.
- Settee backrests fold up and convert into Pullman berths, storage behind backrests.
- Tanks below settees.

#### *Galley:*

- Two burner Origo 6000 gas stove with oven, protected by stainless steel guard.
- Stainless steel double sinks with fresh water tap.
- Formica counter tops and sink cover.
- Drawer and lockers.
- Top loading refrigerator 105 l gravity drained with valve.
- Rubbish bin.

#### *Nav. Station:*

- Forward facing chart table with seat.

- Chart stowage under table top.
- Chest of drawers.

### *Engine Space:*

- Removable front part of engine box incorporates teak ladder.
- Service hatches in aft cabins.
- Engine control panel recessed in cockpit.
- 25 mm sound proofing.

## **Deck Equipment**

---

### *Rig:*

- Mast collar with Spartite.
- Headstay attachment on stemhead (below deck for Reckmann furler).
- Harken jib sheet tracks with floating adjuster..
- Harken mainsheet traveller system.
- Harken halyard lead blocks.
- Spinlock clutches.
- Single-line inhauler system.
- Bowsprit and furler control lines led aft.
- Crossover sheave for halyards on both sides.
- Clear coated carbon fibre double spreader fractional rig.
- Carbon retractable bowsprit in waterproof garage.
- Black painted aluminium boom and aluminium spreaders swept 20 degrees – additional light inshore racing boom.
- Mainsail track for all OD racing.
- Single line reefing arrangements for two reefs.

- Windex with light and one coaxial cable.
- Mechanical vang.
- Shims for mast adjustment.
- Combined mainsail luff groove and track system.
- Navtec rod rigging with discontinuous shrouds, Series 500 deck turnbuckles.
- Holmatro hydraulic backstay system with twin carbon control panels in cockpit near mainsheet winches.
- Holmatro Hydraulic mast jack.

#### *Winches:*

- Harken Aluminium winches.
- B 530 3TCR Primary.
- B 53 2STA Mainsheet.
- B 44 2STA Cabin Top.
- Harken winch handles.

#### *Sails:*

- Medium Jib, 2012, 3DI.
- Heavy Jib, 2012, 3Di.
- Storm Jib, 2010, Dacron.
- Trysail, 2010, Dacron.
- Cruising Jib, 2010, Dacron – Furling.
- Cruising Main, 2010, Dacron.
- Offshore Main, 2010, 3DL single taffeta.
- Inshore Main, 2010, 3DL.
- Light, 2010.

- Medium, 2010.
- Jib Top, 2010, 3DL Kevlar.
- A4, Oct 2010.
- A3, Oct 2010.
- A2, 2010.
- Inshore Main, 2007.
- Offshore Main, 2007.
- Light, 2007.
- Medium Good, 2007.
- Medium Bad, 2007.
- Heavy, 2007.
- #4 Jib, 2007.
- 3DL Furling, 2007.
- Spi Staysail, 2007.
- A1, 2007.
- A1.5, 2009.
- A2, 2009.
- A5, 2007.
- S2, 2009.
- S4, 2009.

*General:*

- Pushpit, pulpit and stanchions in stainless steel.
- Adjustable GRP foot chocks for helmsman/tactician and mainsheet trimmer.
- Boarding ladder aft and a flagpole holder on stern.
- Grab rails on each side of coach roof and companionway.

- ISAF/ORC regulation toe rails (30 mm high) moulded in on the foredeck.
- Deck stowage on foredeck and in lazarette.
- Lockers for storage in cockpit coamings on both sides.
- Locker for storage in port side aft coaming.
- Owner's Manual in English.
- Flag pole.
- Shipping cradle, adjustable height.
- OD certification from builder.

#### *Anchoring & Mooring Equipment:*

- One pair of mooring cleats at bow.
- Anchor.
- 4x fenders with covers.

#### *Covers, Canvas & Cushions:*

- Canvas covers for steering wheels and pedestals.
- Interior cushions, dark blue sunbrella
- Lifeline cushions.
- Bags for sheets and halyards in cockpit.

#### *Safety Equipment:*

- 600 mm high lifelines, with lower life lines at minimum ISAF/ORC height.
- Two folding pad-eyes for harness attachment in cockpit.
- Safety lines attachment to pulpit and pushpit base.
- IRC measurement One design certificate filled in by Nautor.
- 6x safety belts 100N.

- Horseshoe buoy with reflective stripes, light, rope, drogue, cover.
- Offshore flares kit.
- Radar reflector.
- Set of wooden bungs.
- Gas alarm.

#### *Fire-fighting equipment:*

- Remote control fire extinguisher in engine space.

---

## **Исключения**

При продаже яхты исключаются личные вещи владельца.

---

## **Отказ от ответственности**

Компания предоставляет описание судна или яхты добросовестно, но не может гарантировать точность этой информации, а также не ручается за техническое состояние. Покупатель должен проинструктировать своих агентов или оценщиков исследовать представленную информацию более подробно, по собственному желанию. Продажа судна или яхты, изменение цены или снятие с продажи будет происходить без предварительного уведомления.



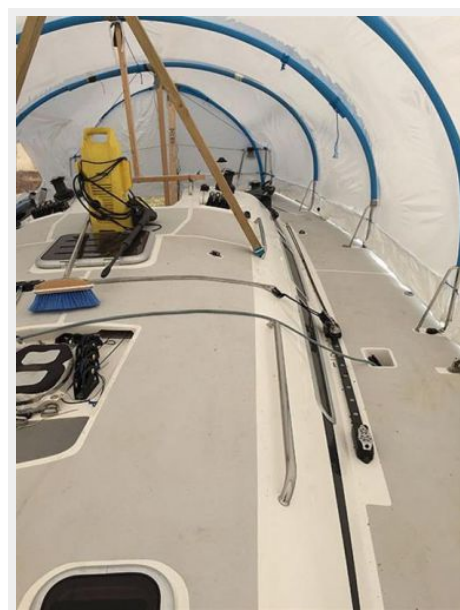
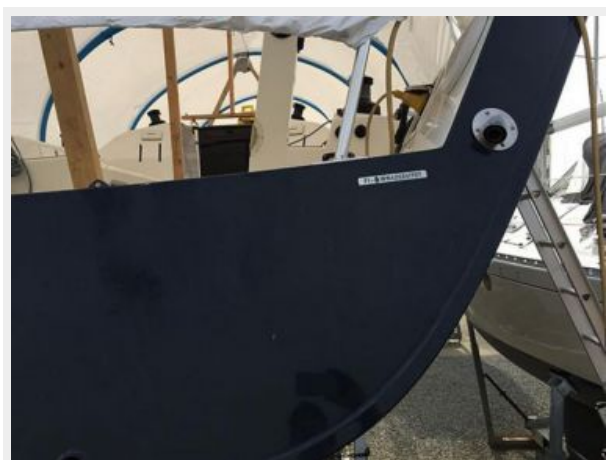
# ФОТОГРАФИИ

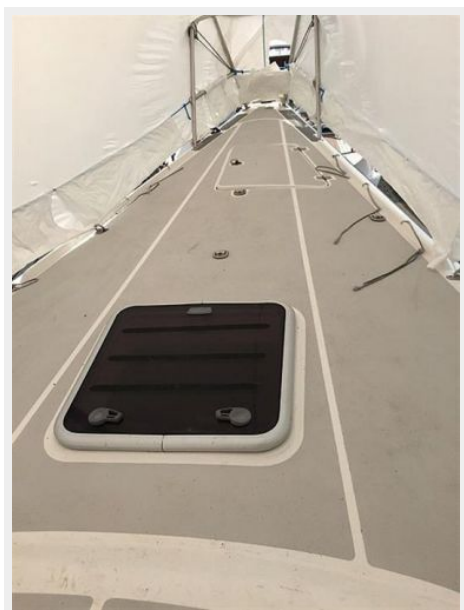




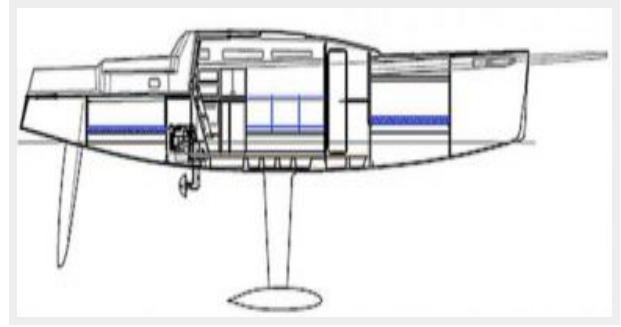
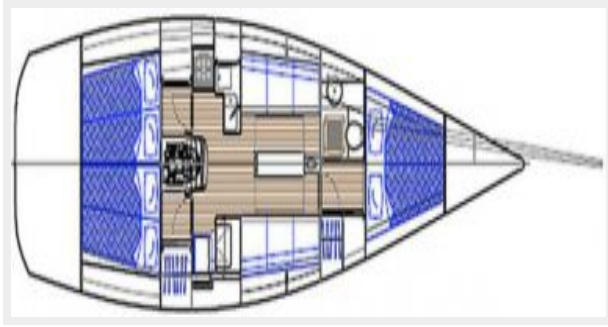














# КОНТАКТЫ

---

Андрей Шестаков (Andrey Shestakov) – ведущий яхтенный брокер отдела продаж яхт и судов компании Shestakov Yacht Sales Inc. Официальный представитель Shestakov Yacht Sales Inc. для русскоговорящих клиентов в центральном офисе компании в Майами/Форт Лодердейл/Флорида/США.

## Контактная информация

---

Email: [andrey@shestakovyachtsales.com](mailto:andrey@shestakovyachtsales.com)

Web: [shestakovyachtsales.com](http://shestakovyachtsales.com)

## Телефоны

---

Краснодарский край: **+7(918)465-66-44**

США, Майами, Флорида: **+1(954)274-4435**

## Время работы

---

Понедельник – Суббота: **9:00 - 21:00**  
EDT

Воскресенье: **Закрето**

## Адрес

---



Harbour Towne Marina, 850 NE 3rd St,  
STE 213, Dania, FL 33004