

LOLITA — LAZZARA



Судостроитель: LAZZARA

Год постройки: 2008

Модель: Крейсер

Цена: **ЦЕНА ЯХТЫ ПО ЗАПРОСУ**

Местонахождение: United States

Длина общая: 75' 0" (22.86m)

Ширина: 18' 2" (5.54m)

Мин. осадка: 3' 6" (1.07m)

Крейс. скорость: 27 Kts. (31 MPH)

Макс. скорость: 30 Kts. (35 MPH)

Купить **LOLITA — LAZZARA** а также выбрать подходящую вам яхту из нашего **каталога яхт** вам поможет опытный яхтенный брокер Андрей Шестаков. На сегодняшний день компания **Shestakov Yacht Sales Inc.** имеет большое количество яхт в **собственном списке продаж**, а также тесно сотрудничает со всеми крупными яхтенными производителями по всему миру.

Для того чтобы купить яхту **LOLITA — LAZZARA** а также проконсультироваться по любому вопросу связанному с покупкой, продажей, чартером яхт позвоните по телефону **+7(918)465-66-44**.

ОГЛАВЛЕНИЕ

ОГЛАВЛЕНИЕ	2
ХАРАКТЕРИСТИКИ	5
Обзор	5
Основная информация	5
Размеры	5
Скорость, вместимость и масса	5
Размещение	5
Корпус и палуба	5
Информация о двигателе	6
ПОДРОБНОЕ ОПИСАНИЕ	7
Vessel Overview	7
Recent Vessel Updates & Upgrades	7
Salon	8
Galley	9
Master Stateroom	9
Master Head	10
VIP Stateroom, Forward	10
Guest Stateroom, Starboard	11
Guest Stateroom, Port	12
Crew Stateroom	13
Crew Head	13
Laundry Center	13
Helm Electronics	14
Salon Helm Station	14
Electrical System	15
Mechanical Equipment	16
Engine Room	17
Aft Deck	17

After Deck	18
Swim Platform	18
Deck Equipment	18
Factory Updates	20
Exclusions	21
Broker Remarks	21
Исключения	21
Отказ от ответственности	22
ФОТОГРАФИИ	23
Salon	23
Salon	23
Galley	23
Salon	23
Galley	23
Galley	23
Galley	24
Galley/Dinette	24
Galley	24
Hallway	24
Master Stateroom	25
Master Stateroom	25
Master Head	25
VIP Stateroom	25
VIP Head	25
Guest Stateroom, Starboard	25
Guest Head, Starboard	26
Guest Head, Port	26
Engine Room	26
Lower Helm	26

Engine Room	26
Engine Room	26
Engine Room	27
Engine Room	27
Foredeck	27
Aft Deck Seating	27
Lolita	27
Lolita	27
Top Level Layout	28
Mid Level Layout	28
Lower Level Layout	28
КОНТАКТЫ	29
Контактная информация	29
Телефоны	29
Время работы	29
Адрес	29

ХАРАКТЕРИСТИКИ

Обзор

Preliminary Listing

Основная информация

Тип судна: Крейсер

Модельный год: 2008

Год постройки: 2008

Страна: United States

Размеры

Длина общая: 75' 0" (22.86m)

Ширина: 18' 2" (5.54m)

Мин. осадка: 3' 6" (1.07m)

Трапы: 16' 0" (4.88m)

Скорость, вместимость и масса

Крейс. скорость: 27 Kts. (31 MPH)

Макс. скорость: 30 Kts. (35 MPH)

Водоизмещение: 80000 Pounds

Вместимость воды: 200 Gallons

Вместимость сточного бака: 100 Gallons Объем топливного бака: 830 Gallons

Размещение

Всего кают: 4

Корпус и палуба

Материал корпуса: Fiberglass

Информация о двигателе

Двигатели: 4

Производитель: Volvo

Модель: IPS 600

Тип двигателя: Inboard

Тип топлива: Diesel

ПОДРОБНОЕ ОПИСАНИЕ

Vessel Overview

LOLITA is absolutely the nicest Lazzara 75 LSX in existence. She has recently completed a comprehensive refit including a new \$1,400,000 engine room featuring the latest generation Volvo IPS power package which includes all new engines, drives, hardware and software. Also included is a Five Year Platinum Warranty starting in May 2015. Other features include a recent complete Awlcraft 2000 paint job by Lazzara Yachts, comprehensive decor updates which includes new exterior fabrics, cushions and accessories. She also has new hardwood flooring in salon and galley areas installed by Lazzara Yachts.

LOLITA features IPS power, the 75 LSX has excellent handling qualities and will easily cruise at 26 knots with outstanding economy and very quiet operating sound levels. Ready for your inspection, LOLITA is reluctantly but seriously for sale.

Recent Vessel Updates & Upgrades

- Complete Awlcraft 2000 paint at Lazzara Yachts 2014
- New hard wood flooring in salon and galley by Lazzara Yachts 2014
- New addition crew quarters per original factory spec by Lazzara Yachts 2014
- New carbon fiber accents - Lazzara 2014
- Upgraded stereo system with four new speakers plus sub-woofer on aft deck, two new speakers plus sub-woofer on foredeck and the now the ability to zone the system so each area can control source and volume independently and by remote control - Lazzara 2014
- New exterior cushions - Lazzara 2014
- Interior designer linens on all bunks - Lazzara 2014
- New aft deck table and aft deck bar top in white Macassar with ebony border - Lazzara 2014
- Upgrade to overhead LED lighting - Lazzara 2014
- All new batteries - Rolly 2015
- New Nobeltec Trident nav system (latest available) with radar, plotter and bottom recorder - Rolly 2015
- New ISIS system - Rolly 2015
- New Volvo IPS 600 Quad EPS E 2 propulsion package including new engines, drives, hardware, software and controls with joy sticks (X 2) with 5 year full coverage warranty starting May 26th 2015 - Rolly 2015
- New Kohler 30 KW generator in sound shield (upgraded from 26KW) to better manage electrical loads - Rolly 2015
- New Sea Recovery watermaker - Rolly 2015
- New AC circulation pump - Rolly 2015
- New fresh water pump - Rolly 2015
- New polished stainless steel perforated engine-room insulation cover - Rolly 2015
- Volvo engines painted red by Rolly 2015

- Bilges detailed and painted with Awlgrip - Rolly 2015
- Engine-room rearranged by Rolly to make components more serviceable - Rolly 2015
- All new engine-room hoses - Rolly 2015
- All new bilge pumps - Rolly 2015
- All propellers reconditioned - 2015
- Complete bottom job with Velux coatings on drives - Rolly March 2015
- Tender serviced and looks new - 2015
- V Kool on salon windows - 2013

Salon

- The wet bar includes Subzero refrigerator and freezer with icemaker
- Bar storage, cabinet with bottle and glass racks storage
- 120 Vac duplex receptacles
- (2) Rain gear lockers
- Overhead lighting
- V-Kool on windows
- Night light (2 each, red)
- Lighting 120 low volt, halogen
- High gloss African cherry wood interior
- Storage cabinets
- Salon custom hardwood flooring - 2014
- White leather sectional sofa
- (2) Red leather lounge chairs
- White leather ottoman
- Pleated fabric electric shades
- Retractable, hydraulic sunroof
- Toshiba 42" LCDTV HD Television
- Denon home theater virtual surround sound system
- DVD DCCI Faroudja, progressive scan, two (2) three way 70 watt speakers and 140 watt sub
- Retractable Aft window passes thru to Aft Deck bar top
- Yamaha Cinema DSP AMP
- Yamaha DVD player
- Creston tuner system
- (8) TV Cable box controllers for each stateroom, salon, helm station and galley to facilitate watching different channels independently
- (2) Power packs
- Audio and Video output
- Somfe blind system-remote controlled from Creston Salon System
- Cat 5 cable and computer hook up
- ISIS monitoring 64 onboard systems
- Creston screen
- (2) Remote player for iPod adapters

- Computer lighting system for Lazzara
- Electrical Breaker Panels

Salon day head is equipped with:

- Custom vanity with marble counter top and under mount sink
- Wall mounted faucet
- Head Hunter marine toilet
- Mirror
- Storage

Galley

- Red leather U-shaped settee with storage underneath to port
- Aluminum and walnut trim corrugated glass top table at port side settee
- Toshiba flat screen TV with DVD
- Wine chiller
- Wine cabinet storage in the front of the island
- Kitchen Aid side by side refrigerator/freezer
- Expandable custom dinette table with storage
- Indirect lighting
- Galley custom hardwood flooring- 2014
- 120 vac duplex receptacles (GFI protected)
- Granite counter tops
- Side by side stainless steel sink
- Grohe fixture
- Frigidaire Dishwasher
- Kitchen Aid Convection/Microwave Oven
- Kitchen Aid 4 top burner with a euro stainless steel hood with exhaust fan
- Ample lighting
- Huge storage under galley sole
- (2) Bar Stools

Master Stateroom

- Walk around king-size bed with inner spring mattress
- Glass desk port side
- Ottoman desk chair
- (2) Dressing bureaus port side with (6) drawers each

- (2) Dressing bureaus starboard side with (6) drawers each
- Veneered night stand, port and starboard, with wood tops and drawers/bureaus, port and starboard with soft close drawers
- Upholstered love seat starboard side
- Privacy shades over panoramic windows
- Private access to head
- Carpet
- Majilite overhead panels with foam backing
- Fabric wall coverings, removable panels
- (2) Horizon panoramic windows
- Direct and indirect lighting
- Receptacles: 120V AC duplex
- Decorative sconces
- Toshiba 32" LCD TV with DVD/CD player
- Sonance I port in wall docking system for iPod amp 350
- Sonance I port video upgrade kit
- Sonance I port remote (white)

Master Head

- Marble vanity top with (2) under mount sinks
- Brushed nickel fixtures
- Spacious closet with mirrored doors
- Clothing Bureau with drawers
- Medicine cabinet with beveled mirror
- Infiniti edge marble flooring
- Marble enclosed full size shower with frameless glass enclosure
- Head Hunter marine toilet
- Towel bars, tissue holders, wall mounted soap dishes and tumbler holders
- Shower panel system with multiple body sprays
- Built-in magazine rack
- Exhaust fan
- Recessed LED down lights
- (2) 120V AC duplex receptacles with ground fault breakers
- Linen closet
- Overhead low voltage AC lighting
- Pullout clothes hamper
- Sharp 15: AQUOS LCD TV 4-3 with tuner, speakers on bottom (silver) behind mirror

VIP Stateroom, Forward

- Queen walk around bed with inner spring mattress and storage under
- Chain locker bulk head with access
- 24V reading lights (12 volt) LED
- Lighting low voltage AC
- Creston control
- Mirrored entry door with walnut frame
- Hatch with screen and blackout
- Carpet
- 120V AC duplex receptacles
- Chrome and brushed nickel fixtures
- Hanging locker to port
- Hanging locker to stbd
- Head with marble top sink
- Infiniti edge marble flooring
- Lighting low voltage AC
- Power vent fan, 24 volt
- Separate stall shower with frameless glass enclosure
- Shower panel system with multiple body sprays
- Wall mounted soap dish, tumbler and tissue holder
- 120V AC duplex receptacles (GFI protected)
- Head Hunter marine head
- Locker storage
- Drawer storage
- Medicine cabinet storage
- Drawer storage under the bed
- Cabinet storage port and starboard with frosted glass panels framed with mahogany woodwork
- Toshiba 15" LCD TV with DVD
- Sonance I port in wall docking system for iPod map 350
- Sonance I port video upgrade kit
- Sonance I port remote (white)

Guest Stateroom, Starboard

- Interchangeable Twin or Queen size bed with innerspring mattress with storage
- Nightstand with (2) drawer storage
- Creston control
- Head with separate stall shower featuring frameless glass door
- Head Hunter marine toilet
- Power vent fan
- Glass towel shelf with rails

- Storage, medicine cabinet with frosted glass front
- Custom vanity with marble counter top and under mount sink
- Infiniti edge marble flooring
- Shower panel system with multiple body spray
- Chrome and brushed nickel fixtures
- Marble shower with seamless glass enclosure
- Wall mounted soap dish, tumbler and tissue holder
- 120 V AC duplex receptacles (GFI protected)
- Toshiba 15" LCD TV with DVD
- Sonance I port in wall docking system for iPOD map 350
- Sonance I port video upgrade kit
- Sonance I port remote (white)
- Glass window on inboard cabin wall - electronic Smart Glass privacy glass
- Walnut headboards
- Hanging locker with full-length mirrored door
- Nightstand with drawers
- Storage drawers under bed
- Carpet
- Majilite overhead panels with foam backing
- Blinds over window
- "Horizon" panoramic windows
- Direct and indirect lighting
- Receptacle:120V AC duplex

Guest Stateroom, Port

- Hanging locker
- Double size bed with innerspring mattress with storage
- Nightstand with (2) drawers for storage
- Creston control
- Head with separate stall shower
- Head Hunter marine toilet
- Power vent fan
- Glass towel shelf with rails
- Storage, medicine cabinet with frosted glass front
- Custom vanity with marble counter top and under mount sink
- Infiniti edge marble flooring
- Shower panel system with multiple body spray
- Chrome and brushed nickel fixtures
- Marble shower with frameless glass enclosure
- Shower panel system with double body spray
- Wall mounted soap dish, tumbler and tissue holder

- 120V AC duplex receptacles (GFI protected)
- Toshiba 15" LCD TV with DVD
- Sonance I port in wall docking system for iPOD map 350
- Sonance I port video upgrade kit
- Sonance I port remote (white)
- Glass window on inboard cabin wall with Electronic Smart Glass privacy glass
- Gloss finished walnut headboard
- Hanging locker with full-length mirrored door
- Nightstand with drawers
- Storage drawers under bed
- Majilite overhead panels with foam backing
- Blinds over window
- "Horizon" panoramic windows
- Direct and indirect lighting
- Receptacle: 120V AC duplex

Crew Stateroom

- Upper and lower berths
- Access from aft deck and direct access engine room
- Storage under bed
- Hanging locker
- 120 V AC Duplex receptacles (GFI Protected)
- Majilite overhead panels with foam backing
- Direct & indirect lighting

Crew Head

- Power vent fan
- Storage medicine cabinet
- HeadHunter marine toilet
- Separate stall shower
- Wall mounted soap dish, tumbler and tissue holder
- 120v AC duplex receptacle (GFI protected)
- Direct & indirect lighting

Laundry Center

- Forward of the Galley
- Pantry forward to starboard
- Separate Bosch Washer and Dryer

Helm Electronics

- Electronic Captains seat with state of art controls with tilt, up and forward and aft
- Helm seat-double seat with foot rests
- Cabinet with storage area
- Simrad AP 26 auto pilot
- Simrad IS 15 compass
- ISIS computer finger pad
- Seakey
- Joystick
- Keyboard and pad for wireless mouse to starboard storage, Creston XM Radio,
- AM/FM radio, DVD player, windshield wipers, Sunroof control, Mariner Night Vision
- Alarms/Monitors
- Lazzara 64 channel ISIS 500 vessel monitoring system (New 2015), including Dynamic diagnostics, (1) 15" LCD monitor, ECM output from engine monitor/alarm electronics, generator systems alarm/monitoring and start/stop, tank level read out and alarms
- Fire Zone Alarm for engine room, bilge alarms and pump run indication, auto fire discharge alarm, Volvo Engine alarms, Communications-One (1) VHF Simrad RS-87
- VHF Radio/Fog Horn/Hailer, Telular cell phone GSM850/1900 with 3 db cell antenna, Sea Key Telematics with SOS
- KVH SAT 525 TracPhone System
- CCTV system with dome camera in engine room, output to helm monitor ThermoVision Mariner
- Imaging system, thermal night vision camera by Flir systems with output to helm monitor
- Simrad Bluetooth wireless autopilot control

Salon Helm Station

- Fully instrumented Helm console, including electronic engine controls with motorized tilt
- (2) Single custom electric helm chairs, fully adjustable, leather (electric D/C)
- GPS/plotter/radar/sounder
- Autopilot-Simrad AP26
- Compass displays
- Simrad IS 15
- (3) 15" LCD displays
- Volvo speed/depth/temperature gauges
- Nobeltec Trident plotter/radar/bottom radar (New 2015)
- Electronics
- Adjustable glass cockpit
- Archwing custom fiberglass, including mountings for:
 - Antennas
 - Radar

- Lighting
- Horns
- Navigational lighting

Electrical System

- Exterior Lighting-Overhead lights Aft Deck
- 30kW Kohler Generator (New 2015) with 90 hours -240 V/60 cycle with sound shield (low RPM), remote start with muffler, fresh water cooling, fuel filter, seacock and seawater strainer
- Electrical Grounding-Bonding system with large zinc hull plate
- IPS with separate drive and hull zincs
- Interior Lighting-Overhead LED lighting throughout (low voltage AC)
- Emergency 24 volt DC lighting
- ShorePower-Glendinging cablemaster @ 100 Amp 240V/60 cycle with 175' cord and wireless remote
- Isolation transformer, 240V/24KVA/100 Amp
- Switch boards, Load Banks & Control Panels
- Panel, AC main selector-240V
- Panel, main distribution-AC/DC
- Lazzara engineered Engine Room DC distribution panel
- "Power Touch" rload management control system
- All cables marked with circuit number
- Smart Y shore connector cable
- Volvo anti corrosion protection - \$5,000 upgrade with new drives

Navigation Lights

- Forward steaming light
- Port/Starboard side running lights
- Stern running light
- Anchor light

Exterior deck lights

- Aft Deck, transom stairs
- Boat deck lighting
- Searchlight, chrome

Batteries, (AGM) Group 31:

- (2) GPL 3100T for generator
- (8) GPL 31D0T/M for engines
- (2)- GPL40L for house
- (2) Battery chargers (40 AMP Charles Chargers)

- All batteries new 2015

Mechanical Equipment

- A/C system, six zone 92,000 BTU with handlers and thermostats
- Insulated copper piping supply and return lines
- Head Hunter waste tank treatment system for safe overboard discharge
- Individual head exhaust fans
- (2) Bilge system 24 VDC auto bilge pumps (1 aft, 1 engine room)
- (2) Emergency bilge pumps, engine driven
- Black water system- 100 gallons black water storage tank
- Head Hunter toilets
- Holding tank level indicator
- Dockside and pump out overboard
- Grey water system-sump box with pump 24 V shower /drains
- Sump box with pump A/C condensate drains
- Central vacuum system
- (2) Volvo displays - New 2015
- Volvo display all engines
- Updated shift and throttle controls with ability to take control, electronic with engine sync - New 2015
- Updated Volvo joystick control for docking and slow speed maneuverability, 92) stations - New 2015
- Volvo electronic steering - 2015
- Key switch start/stop - 2015
- Cockpit control station - 2015
- Station transfer panels - 2015
- Start/stop panels - 2015
- Latest generation IPS Engines and Transmissions-(4) Volvo 600 engines with IPS drives as well as all new hardware, software and controls installed new 2015 with 5 year warranty - 50 hrs 10/2015
- Nibral duo props
- Exhaust system main engines underwater through drive units
- Fire extinguishing system is a fire suppression system, automatic with engine shutdown, override and manual pull - Recertified 2015
- Carbon monoxide detectors in Crew
- Fresh Water System 200 Gals
- Aft deck shower hot/cold
- Pressure water Headhunter MARC 5 240V with 24V back up pump Diaphragm (Shurflow)
- Water filtration system
- Water Heater 240V (30 gals)
- Individual station water maintenance shut-off
- Anchor foredeck wash down system fresh water

- Aft was down system
- Aft Cockpit shower
- Dockside water inlet-aft-deck
- Fuel System-830 gallon fuel tank
- (4) Racor 900 Fuel Filters
- (2) Priming pumps electric
- (4) Priming pump motors
- Lube Oil System-oil change system
- Sea Water Cooling System- (4) CUSTOM LARGER sea strainers
- Seacocks on all underwater fittings
- Watermaker - Sea Recovery 450 GPD - New 2015
- Steering System-Volvo Electronic System
- Steering wheel with wood accent
- Volvo joystick in (2) stations
- (2) Spare sets (four total) - IPS propellers

Engine Room

- The engine room is epoxy coated white.
- Engine room flooring is in metal diamond plate
- Volvo control panel for engines and drives
- Start and stop panels
- Station transfer panels
- Alarms
- Displays engine functions
- Fresh water hose and spigot - forward and aft
- Forward engine room crew access
- Lazzara engineered "ultra sound" engine room
- Interior "Isolation Dampening" System
- Thermobarrier foil insulation
- Polished stainless steel perforated insulation covering
- Powered ventilation system
- Aft Deck access
- Exhaust System for Main Engines is underwater, through drive units

Aft Deck

- (4) JL audio speakers - 2014
- 10" Subwoofer - 2014
- Large white macassar table (2014) at aft deck settee with (4) chairs

- Locker storage to port
- Starboard, (2) chrome bar stools at bar top
- Teak Deck
- 19" Sunbright TV that is hidden behind glass on aft deck
- Storage to starboard
- Single sliding glass door to Salon
- Drop down glass window at bar

After Deck

- Sun Pad
- Carbon wrapped hand rails around the sun pad
- Gates with clear acrylic port and starboard, down to swim platform
- Under sun pad private entrance to
- Crew quarter and engine room
- Aft starboard control station for Volvo IPS system
- Joystick
- Horn in remote box
- Teak decks all around including side decks and forward deck
- OpacMarc hydraulic passarelle

Swim Platform

- Swim step
- Hot and cold shower
- 100 amp shore power on Glendenning cable master
- DSL hook up in compartment in lower left
- Fresh water spigot
- Swim ladder with remote to operate from aft deck
- Hydraulically operated garage door opens from aft deck that houses the tender
- Fresh water inlet
- Cable TV/Phone connection
- Retractable cleats for tender
- Engine Room windows with v-kool tinted glass

Deck Equipment

Anchor and Anchor Handling:

- Anchor, Stainless Steel plow
- Anchor chain storage in forepeak locker
- Anchor chute, Stainless Steel
- Anchor wash down spigot with hose
- Windlass, chain with controls

Deck Hardware:

- Airhorn
- Windshield wiper system 24 vdc/pantograph type with washer system
- Lazzara custom 16" bow, spring and stern cleats, 316L stainless steel
- (11) 2" Stainless 316L steel rails on main deck
- Burgee staff, custom stainless steel with burgee flag
- Forward hatch to forward cabin
- Acrylic panel with Stainless Steel LSX logo Fiber optic edge lit
- Bulwark boarding doors port and starboard
- Teak aft deck and swim platform deck

Doors and Hatches:

- Weather-tight engine room access
- Crew access hatch
- Foredeck access hatch
- Stainless Steel aft main salon sliding door
- Aft Deck bar with remote controlled hydraulic lift window
- Aft garage door hydraulically actuated
- Sliding hydraulic hard top

Port Lights and Windows:

- (4) Recessed hull windows
- (2) "Horizon" panoramic windows
- Main deck windows are tinted glass, laminated and chemically strengthened
- Helm windshield is high "Thermal E" glass, laminated and chemically strengthened with V-Kool

Rails, Ladders and Gangways:

- Stainless Steel (316L) round handrails on all exterior decks
- Boarding ladder with handrail
- Solid PVC rub rail with Stainless Steel insert
- Swim ladder, hydraulic remote controlled system
- Bulwark doors port and starboard
- Aft Stateroom ladder
- OpacMare Hydraulic Passerelle

Storage Locker:

- Foredeck locker for line and fender storage

Aft Deck:

- Teak flooring
- Indirect lighting
- Aft Stateroom access hatch
- Teak steps, starboard access hatch for engine room
- Storage, side panels-port
- Speakers, overhead
- Cockpit lights, overhead
- Low level courtesy lights
- Ships Bell
- Stainless steel baby gates
- Storage compartments
- LSX logo engraved on W' brasion resistant acrylic panel with stainless steel frame illuminated LED edge lit technology by Yachtsign
- Cockpit control system
- Joystick control Volvo
- Station transfer panels
- Start/stop panels

Factory Updates

Boat Tender Package:

- Electric DC winch and hoisting strap
- Transom cleats for tender

Enhanced Audio Visual Package:

- Galley Toshiba 23" HL V86 LCD TV with DVD
- Aft deck Sunbrite 20" TV all weather LCD HDTV compatible with fold-up lift
- Forward sunpad JL Audio marine for (2) 5" speakers - New 2015
- Blue Ray TV Sat in all staterooms

Enhanced Electronics Package:

- KVH SAT 525 TracPhone System
- CCTV system with dome camera in engine room, output to helm monitor ThermoVision Mariner
- Imaging system, thermal night vision camera by Flir systems with output to helm monitor
- Simrad Bluetooth wireless autopilot control

- (4) Additional satellite TV receivers

Underwater Lighting and Camera Package:

- (6) High intensity metal halide underwater lights
- Sea Vision Underwater color camera with output to LCD monitor at helm station

Watermaker:

- Sea Recovery reverse osmosis watermaker, 450 gallon per day - New 2015

Sunbrella Package and weather covers include:

- Aft settee and sunpad covers
- Textilene external forward windshield covers
- Forward sunpad cover
- Fender covers
- Hand rail covers

- Aft deck wsn shade extension supported aft by stainless steel poles

USCG, Lifesaving & Boarding Equipment Package:

- (2) Life rafts - valise type
- Complete USCG package including first aid kit
- EPIRB
- Handheld VHF
- Boarding ladder, six step, adjustable for tides

Exclusions

Owners and Crews personal items and tools

Broker Remarks

Without question, LOLITA is the finest 75 LSX anywhere. Her owner, who had no plans to sell, put unimaginable financial resources towards making her the best there is. New everything in 2015 including Volvo's latest generation IPS power system with a full five year warranty. Reluctantly, but very seriously, for sale. Owner want offers and buyer will save big.

Исключения

При продаже яхты исключаются личные вещи владельца.

Отказ от ответственности

Компания предоставляет описание судна или яхты добросовестно, но не может гарантировать точность этой информации, а также не ручается за техническое состояние. Покупатель должен проинструктировать своих агентов или оценщиков исследовать представленную информацию более подробно, по собственному желанию. Продажа судна или яхты, изменение цены или снятие с продажи будет происходить без предварительного уведомления.

ФОТОГРАФИИ

Salon



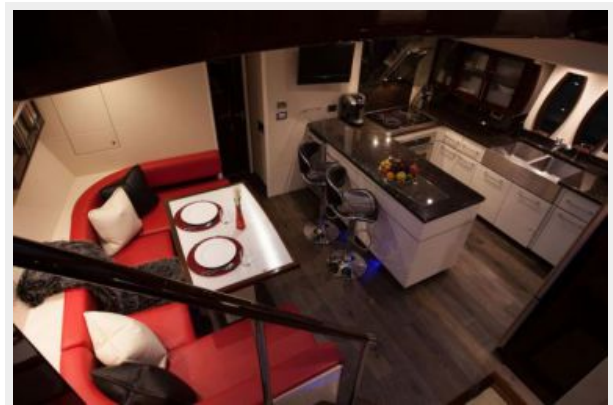
Salon



Salon



Galley



Galley



Galley



Galley/Dinette



Galley



Galley



Hallway



Master Stateroom



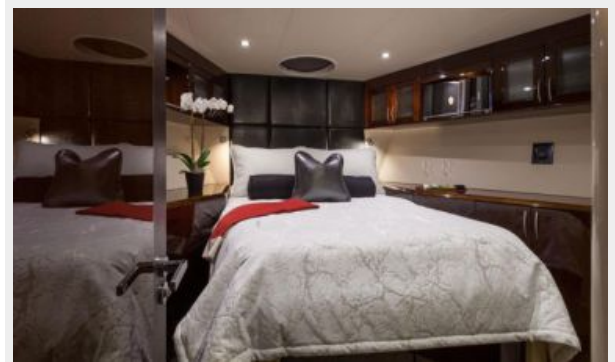
Master Stateroom



Master Head



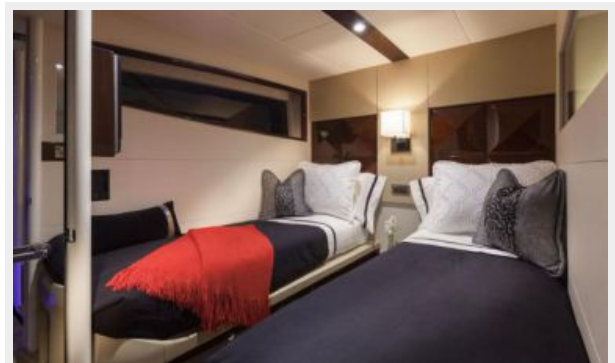
VIP Stateroom



VIP Head



Guest Stateroom, Starboard



Guest Head, Starboard



Guest Head, Port



Lower Helm



Engine Room



Engine Room



Engine Room



Engine Room



Engine Room



Aft Deck Seating



Foredeck



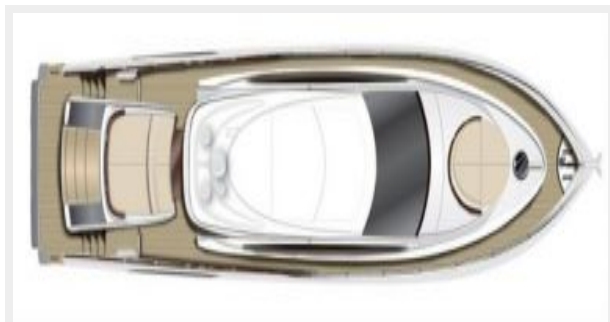
Lolita



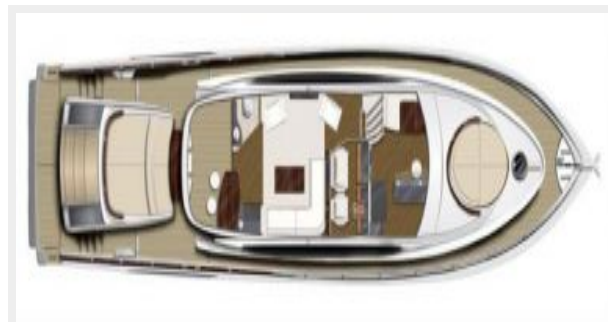
Lolita



Top Level Layout



Mid Level Layout



Lower Level Layout



КОНТАКТЫ

Андрей Шестаков (Andrey Shestakov) – ведущий яхтенный брокер отдела продаж яхт и судов компании Shestakov Yacht Sales Inc. Официальный представитель Shestakov Yacht Sales Inc. для русскоговорящих клиентов в центральном офисе компании в Майами/Форт Лодердейл/Флорида/США.

Контактная информация

Email: andrey@shestakovyachtsales.com

Web: shestakovyachtsales.com

Телефоны

Краснодарский край: **+7(918)465-66-44**

США, Майами, Флорида: **+1(954)274-4435**

Время работы

Понедельник – Суббота: **9:00 - 21:00**
EDT

Воскресенье: **Закрито**

Адрес



Harbour Towne Marina, 850 NE 3rd St,
STE 213, Dania, FL 33004