

GOMBEY DANCER — OFFSHORE



Судостроитель: OFFSHORE

Год постройки: 2007

Модель: Крейсер

Цена: ЦЕНА ЯХТЫ ПО ЗАПРОСУ

Местонахождение: United States

Длина общая: 85' 0" (25.91m)

Ширина: 21' 6" (6.55m)

Мин. осадка: 5' 10" (1.78m)

Купить **GOMBEY DANCER — OFFSHORE** а также выбрать подходящую вам яхту из нашего каталога яхт вам поможет опытный яхтенный брокер Андрей Шестаков. На сегодняшний день компания **Shestakov Yacht Sales Inc.** имеет большое количество яхт в собственном списке продаж, а также тесно сотрудничает со всеми крупными яхтенными производителями по всему миру.

Для того чтобы купить яхту **GOMBEY DANCER — OFFSHORE** а также проконсультироваться по любому вопросу связанному с покупкой, продажей, чартером яхт позвоните по телефону **+7(918)465-66-44**.

ОГЛАВЛЕНИЕ

ОГЛАВЛЕНИЕ	2
ХАРАКТЕРИСТИКИ	5
Обзор	5
Основная информация	5
Размеры	5
Скорость, вместимость и масса	5
Размещение	5
Корпус и палуба	5
Информация о двигателе	6
ПОДРОБНОЕ ОПИСАНИЕ	7
Hull	7
Superstructure & Deck	7
External Parts	8
Construction Standards	8
Propulsion System	8
Engine Room & Bilges	8
Equipment	9
Electrical System	10
Main Deck	11
Aft Deck/Cockpit & Sports Deck	12
Portuguese Bridge & Boat Deck	12
Wheelhouse	13
Lobby	13
Day Head	14
Salon	14
Forward Dining Lounge	15
Galley	15
Owner's Stateroom	16

Owner's Dual Port & Starboard Heads	16
Mid-Guest Stateroom	16
Mid-Guest Head	17
Forward Guest Stateroom	17
Forward Guest Head	17
Crew Quarters	18
Lazarette	19
Additional Standards	19
Pilothouse	19
Исключения	20
Отказ от ответственности	20
ФОТОГРАФИИ	21
Profile	21
Foward	21
Forward Deck	21
Forward Deck	21
Helm	21
Helm	21
Pilothouse	22
Pilothouse Seating	22
Salon Looking Foward	22
Salon Looking Aft	22
Dining	22
Aft Deck	22
Aft Deck	23
Aft Deck BBQ	23
Master Bath	23
Master Stateroom	23
VIP Stateroom	23

VIP Stateroom	23
VIP Bath	24
Guest Stateroom	24
Stairway - Down to Staterooms, Up to Pilothouse	24
Galley	24
Crew Mess	24
Galley	24
Starboard	25
Crew Galley	25
Walkaround	25
Walkaround	25
Tender	26
Engine Room	26
GA Plans	26
GA Plans	26
КОНТАКТЫ	27
Контактная информация	27
Телефоны	27
Время работы	27
Адрес	27

ХАРАКТЕРИСТИКИ

Обзор

Основная информация

Тип судна: Крейсер	Модельный год: 2007
Год постройки: 2007	Страна: United States

Размеры

Длина общая: 85' 0" (25.91m)	Длина по ватерлинии: 77' 0" (23.47m)
Ширина: 21' 6" (6.55m)	Мин. осадка: 5' 10" (1.78m)

Скорость, вместимость и масса

Водоизмещение: 192000 Pounds	Вместимость воды: 600 Gallons
Вместимость сточного бака: 315 Gallons	Объем топливного бака: 3600 Gallons

Размещение

Всего кают: 3	Спальные места: 6
Всего ком. состава: 3	Каюты экипажа: 1
Спальных мест экипажа: 2	Комм. состав экипажа: 1

Корпус и палуба

Материал корпуса: Fiberglass	Комплектация корпуса: Semi-Displacement
------------------------------	---

Информация о двигателе

Двигатели: 2

Производитель: MAN

Модель: 1360

Тип двигателя: Inboard

Тип топлива: Diesel

ПОДРОБНОЕ ОПИСАНИЕ

Hull

Hull Design:

- Hull #85-18
- Semi-displacement fine bow entry, generous flair at bow sections, double chine, integral swim deck, FRP keel extension with stainless steel shoe for prop protection

Hull Construction:

- Hand laminated FRP utilizing bi-directional and uni-directional Kyntex CDM-2415, DBM-2415, CDM-1810 and CDM-1708 (or equivalent), Kevlar, vacuum bagged Core Cell sandwich construction above the waterline.
- Solid laminate below waterline with high quality ISO and vinylester resins
- Full-length hull girders of high density foam cores with bi and uni-directional kyntex
- Molded in FRP rub rails capped with solid 316 stainless steel
- Exterior hull finish in high gloss "Cook" gel coat (953 WA-#540), Reichold Hydrex vinylester resin laminates.
- Double lower boot stripes at waterline and single stripe at Portuguese bridge, Cook gel coat.
- Cored structural bulkheads padded at hull, bonded as per schedule
- Putty-coated bilges for smooth finish
- All bonding of hull to deck, roofs to cabins done with FRP, exterior finished with gel coat
- 30 mil epoxy barrier coating and bottom paint

Superstructure & Deck

- Hand laminated FRP utilizing bi-directional and uni-directional Kyntex with Core Cell sandwich, high quality ISO resin, vacuum bagging, deck mechanically and FRP bonded to hull
- Suitable high compression cores as required for hardware mounting
- Exterior finished with high gloss "Cook" gel coat, #953WA-540 for superstructure and #953NA-#526 for non-skid or teak deck, gel coated joint at roof to cabin sides
- Main deck soles and engine room bulkhead padded and cored with appropriate sandwich materials
- Four main bulkheads padded and cored with appropriate sandwich materials with crash bulkhead at bow with watertight hatch

External Parts

- Hand laminated FRP utilizing bi-directional and uni-directional Kyntex with Core Cell sandwich, high quality ISO resin, vacuum bagging, deck mechanically and FRP bonded to hull
- Suitable high compression cores as required for hardware mounting
- Exterior finished with high gloss "Cook" gel coat, #953WA-540 for superstructure and #953NA-#526 for non-skid or teak deck, gel coated joint at roof to cabin sides
- Main deck soles and engine room bulkhead padded and cored with appropriate sandwich materials
- Four main bulkheads padded and cored with appropriate sandwich materials with crash bulkhead at bow with watertight hatch

Construction Standards

- Vessel scantlings, construction, systems and installations shall meet or exceed all applicable ABS standards
- All systems including mechanical, electrical, and plumbing to have complete system schematics

Propulsion System

- Twin M.A.N. 1360 diesel engines with vibration damping mounts, additional 24V/75Amp alternators dedicated to ship's service
- IRM-350A 2.64:1 gears with Centa dampening and live PTO
- Aquadrive propulsion system
- Stainless steel #316 (with 316-L rod) exhaust risers with zinc plugs connecting to FRP underwater
- 2-3/4" Aquamet #22 High Strength propeller shafts
- Bronze V struts with cutlass bearings
- Tides Bronze Intermediate struts with cutlass bearings
- 5-blade Nibral expanded ratio computer designed propellers with Prop Speed
- Tides Dripless shaft glands with dual cooling lines
- Twin Disc electronic engine controls at wheelhouse, aft deck, and remote controls at Portuguese bridge
- Hynautic power steering system with secondary Hynautic back-up power steering system
- Engine room start/stop panels with engine gauges
- Visual and audio alarms for engine systems at wheelhouse

Engine Room & Bilges

- ZF Transmissions, model 665A
- Welded stainless steel engine beds (electro-polished)
- 4 Aluminum (marine grade) fuel tanks & 1 vinylester FRP fuel tank
- All fuel tanks interconnected by 1-1/4" fuel hose or piping, conveniently located with ball valves for isolation
- Fuel tanks insulated to minimize condensation and noise transfer
- 24V, 25gpm fuel transfer pump with independent 1-1/4" piping
- Fuel manifold system for supply and return management with 1-1/4" crossover for fuel fills
- Sight gauges (marine grade with protective guard) at each fuel tank
- 2 x 32-gal FRP oil tanks for new and used oil with dip sticks
- Reverso 24V oil change system
- Dual Racor #1000 marine filter system with vacuum gauge for main engines with isolation valve
- Dual Racor #500 marine filter system with vacuum gauge for generators with isolation valve
- Integral stainless steel drip pans for Racor filter system
- Marine grade bronze sea cocks for through-hull skin fittings
- Groco sea strainers at all raw water intakes
- Groco safety sea cocks for main engine raw water intakes plumbed for emergency bilge pump use
- Full flow stainless ball valves for all piping systems
- Headhunter tank level indicator system for fuel, water, and waste tanks
- High output Whale 40 manual bilge pump
- Delta-T engine air intake system (minimizes water injection), color-matched to exterior
- 4 Delta T 11" 120V/AC engine room blowers
- Tides dripless glands at prop shafts, rudder shafts, with additional seal carrier and seal
- Hydrodynamic stainless steel rudders per design
- Engine room 24V/DC lights x 4 and 120V/AC fluorescent lamps x 4
- Engine room video camera system, 2 cameras, 1 black and white monitor at wheelhouse
- Stainless steel safety rails along inboard engine stringers, port and starboard
- 24V low profile stainless steel dome lights at pump room and thruster/chain area
- Fresh water wash down faucet in engine room
- 2 Heavy-duty aluminum dogdown doors fore and aft
- Multiple layers of the latest technology sound dampening insulation
- White aluminum perforated covering on overhead, side, forward, and aft engine room bulkheads

Equipment

- 2 PTO driven hydraulic pumps at main engines for bow and stern thrusters, anchor windlasses and stabilizers with automatic back-up
- ABT 12' roll fin hydraulic stabilizers and 50 hp bow and 40 hp stern thrusters with hydraulic raw water cooling pump

- 2 Maxwell 4,000-lb hydraulic bow anchor windlasses, ½" 316 stainless steel chain stoppers and hand-held remote control and controls at wheelhouse
- 2 x 110-lb polished stainless CQR-type bow anchors, 300' x ½" HT chains
- Nautical Structures 2,500-lb davit with hydraulic rotation, boom and cable functions
- Marine Air 120000BTU chilled water air conditioning and heating system with surge-less start-up with Copeland compressors, digital frequency drive inverters, multiple stage control, sea water pump, circulation pump, pump relay panel, water fill assembly, expansion tank, temp/pressure gauge panel
- NuTone central vacuum system
- Fireboy automatic fire extinguishing system with engine shutdown system
- Smoke and carbon monoxide detectors with alarms (with self-contained batteries)
- Dual Buell low profile air horns with 120V compressor, compressor outlets at lazarette and engine room
- Exalto stainless articulating windshield wipers with washer system
- Tecma silent flush heads
- Headhunter holding tank discharge pump with Headhunter stand-by discharge pump
- Deck discharge for holding tank
- 7 x 24V bilge pumps with Ultra System bilge switches
- Ultra System high water bilge alarm with warning lights at pilothouse
- Gata valve at each watertight structural bulkhead
- Headhunter Mach 5 120V fresh water pressure pump with filter and accumulator tank at pump room
- Headhunter 24V stand-by water pressure pump at pump room
- 1,200 GPD Sea Recovery reverse osmosis water maker with deluxe filtration upgrade, high level input, filtration, automatic fresh water flush, ultra violet sterilizer, clean and rinse valve panel
- 35-gal Allcraft 220V stainless steel water heater
- 12-gal Allcraft 220V stainless steel water heater
- Maytag washer/dryer at lazarette
- 4 shower sump pumps
- Dockside water pressure connections, starboard forward and port aft
- 2 stainless steel Seagull anti-microbial water filtration systems, port aft and starboard forward
- Central drain system minimizing thru-hull fittings

Electrical System

- Northern Lights diesel generators, each 30kW, 2107hrs, 24V start with whisper sound shield with gas/water exhaust separators and E.A.R. anti-vibration mounts, control panels at wheelhouse and engine room
- 4x 8D gel cell main engine start batteries (24V)
- 2x 4D gel cell generator start batteries (24V)
- 10x 8D gel cell batteries for ship's 24V system

- 6 Heavy duty battery on/off switches for engine and generator batteries with battery crossover capability for main engine and generator batteries
- Heavy duty on/off switch for house batteries
- 2 Xantrex SW-40/24 4kW inverters/120Amp chargers, interface cable and high temperature shut-down with remote panel at wheelhouse
- Newmar PT-24-40CE, 24V ship service back-up charger with high temperature shut down
- Newmar PT-24-20CE, 24V engine battery charger with high temperature shut down
- 2 x 75Amp, 24V alternators for engine system
- 2 x 75Amp, 24V alternators for house system
- Digital DC charge rate, DC amp meters and DC volt meters
- 24V and 12V distribution/circuit breaker panels with amp and volt meters with backing light at wheelhouse
- 120V and 240V distribution/circuit breaker panels with amp and volt meters with backing light at wheelhouse
- 4 Mastervolt 20Amp converters, 24V to 12V
- 2 Marinco shore power 125/250V-50A, phone and TV cable inlets located port side aft and starboard side forward providing 100Amp service
- 2 Glendinning CM-7 cable masters, 240V-50A with 75' cable
- 2 x 12KVA Charles Marine Iso-Boost shore power isolation transformers
- Vimar outlets and switches in accommodations and main living area
- Cantalupi Halogen overhead lighting with dimmer controls throughout boat
- Wall sconces or reading lights in staterooms and heads as appropriate
- GFI breaker protection as appropriate at deck, galley, heads, engine room, and lazarette
- Breaker protection at each AC source
- Electrolysis bonding and grounding system with two 6" x 12" zinc plates and shaft scratchers
- High quality shielded RG-6 CO AX for TVs
- Tinned high temperature wiring, UL approved
- Panasonic phone/intercom system, 10 stations located as per owner's choice
- Winegard TV antenna booster with 3-position selector switch
- Perko navigation lights, port and starboard running lights, anchor light, stern light, and bow light
- ACR search light with remote control
- Polk Audio speaker systems at pilothouse, master, VIP, and mid-guest staterooms
- 2 x 110V flood lights at aft boat deck and mast

Main Deck

- 2-tone non-skid at all decks; pilothouse roof white non-skid
- Exterior stainless 316 grade (including screws and bolts/nuts), welds ground and polished
- 1-1/4" 316 stainless steel hand rails, and port and starboard sides and bow
- Bow seat with storage under and behind, and port and starboard lockers
- Port and starboard bulwark doors

- MarQuipt boarding stairs with integral storage compartment; white vinyl or teak treads, and handrail
- Port side door to large watertight storage closet or optional entry to engine room
- 316 stainless stairway to boat deck from starboard side main deck
- Manship hatches with Ocean Air blinds sliding screens/shades
- Manship stainless steel port lights
- 8 x 316 stainless steel hawse holes with cleats, and 6 x 316 stainless steel fender hawse holes
- Cantalupi waterproof stainless steel deck and stair lights, and stainless steel LED safety lights
- Aluminum reinforced exterior doors, exterior aluminum, FRP covered and gel coated; interior aluminum covered with matching interior wood; stainless steel door frames
- Teak bow staff and stainless steel mounting socket
- Forward deck storage locker with removable bin
- 316 stainless steel bell rail with bell, and integrated safety lights for windlass operation
- 316 stainless steel integrated fender holders, 3 port; 3 starboard

Aft Deck/Cockpit & Sports Deck

- Aft deck engine and thruster controls, rudder indicator, and engine start/stop switches
- Port and starboard clear-view wing doors with 316 stainless steel frame
- Stairway access to lazarette and crew cabin from aft deck or salon
- FRP molded bench seat with built-in gasoline tank, sight gauge and 15' hose
- 2 Aft deck tables with stainless steel hi-lo pedestal bases with fore/aft sliding mechanism
- Under-counter refrigerator
- Covered FRP sink with corrosion resistant pull-out faucet
- 2 Aft deck floodlights mounted on boat deck overhang
- Hand-held shower with corrosion resistant pull-out faucet
- Fresh and salt water wash down at stern
- Removable hinged FRP weather doors at swim deck stairs
- 4 Removable stainless 3" diameter U-handrails at sport deck
- 316 stainless steel pop-up cleats at sport deck mounted under outboard stainless steel U rails
- Concealed 316 stainless steel built-in swim ladder at sport deck, hinged to 25 degrees for easy boarding
- Waterproof speakers in California Deck overhead with volume control
- Color camera at aft deck

Portuguese Bridge & Boat Deck

- Twin Disc electronic engine controls with hand-held remote and thruster functions
- Fiberglass radar mast with deck floodlights

- Stainless ladder from boat deck to wheelhouse roof with stainless Manship hatch
- 1-1/4" 316 stainless steel handrails with 3/4" 316 stainless steel lifelines at boat deck
- Covered FRP sink with corrosion resistant pull-out faucet
- Under-counter refrigerator
- 2 Gaggenau stainless electric grills at boat deck with stainless steel heat shield - New 2015
- Teak ventilation slats inside interior cabinets and seats
- Boat deck drained to waterline with integral drains and scuppers
- Teak flagstaff with stainless steel mounting socket
- Fresh water wash down out let at starboard cabinet
- Poly Planar waterproof speakers at boat deck with volume control

Wheelhouse

- Helm station with complete engine instrumentation, function alarms, and rudder indicator
- Twin Disc engine controls, Hynautic steering, and Wesmar bow and stern thruster controls
- Digital monitoring system for fuel, water, and waste tanks
- Rocker switch panel for functions
- Ship's function panel with indicator lights
- 3 stainless Exalto articulating windshield wipers with washer system
- 2 Ventilation overhead hatches with Ocean Air blinds and sliding screens/shades
- Marine Air 12,000BTU insulated air handler
- Marine Air 9,000BTU insulated air handler
- Stidd helm chairs: One standard width; two narrow. Choice of Ultraleather fabric and powder-coated bases
- Destroyer-type helm wheel, stainless steel with matching hardwood outer ring
- Integrated cup holders and solid wood handrail at helm console
- Built-in chart and computer desk with storage drawers and chart light
- Integral brass-plated swing-out seat at chart desk
- Chart and navigation storage drawer
- Raised "L" seat with dining table
- Low large windows for "sit down" visibility
- Fabric covered valances with silhouette mini blinds
- Wheelhouse access from lobby and starboard side main deck stairways
- Port, starboard, and aft FRP watertight cabin doors
- Solid wood border at sole with high quality carpet
- Woodwork with satin finish and recessed paneled cabinet doors
- Cantalupi Halogen lighting with dimmer controls
- Polk Audio speaker system with volume control

Lobby

- FRP hinged cabin doors at port/starboard sides to main deck

- Lambrequins with silhouette mini blinds prewired for motorized shades (motorized shades not standard)
- Passageway to galley and dining areas
- 2 x 110V wall sconces with dimmer control
- Stairway to wheelhouse with double handrails
- Stairway to master stateroom with recessed wooden panels
- Woodwork with satin finish
- Cantalupi Halogen lighting with dimmer controls
- Cantalupi safety lights at stairway
- Hardwood sole border with inlay and high quality carpet with sound insulation
- Rope lighting in Lobby and Main Cabin

Day Head

- Wood vanity top with 4" back and side splash
- Ceramic sink with Newport Brass "lifetime finish" brass faucet
- 2 x 110V wall sconces with dimmer control
- Head Hunter turbo flush head
- Newport Brass "lifetime finish" tissue holder and towel ring
- Cantalupi Halogen lighting with dimmer controls
- Wood soles with solid wood border
- Woodwork with satin finish
- Ultra quiet ventilation blower

Salon

- Double sliding aft doors with fixed upper and lower glass windows
- Low large windows for "sit down" visibility
- 2 Marine Air 24,000BTU insulated air handlers
- Silhouette mini blinds, prewired for motorized shades
- Stereo cabinet with upper cabinets with beveled glass doors and hidden rope lighting
- Custom settee at starboard side
- Samsung 42" LCD HDTV with hi-lo lift
- Polk Audio speaker system with volume control
- Ceiling design with wood trim
- Hidden push/release latches on all cabinet doors
- Latest technology Soundown foam insulation materials at air intakes
- 24V Halogen lighting with dimmer controls
- 4 x 110V wall sconces with dimmer controls
- Solid wood crown molding surrounding salon
- Woodwork with satin finish
- High quality carpet with sound pad

Forward Dining Lounge

- Custom dining table with built-in settee and pedestal base
- Custom dish/glass storage drawers
- 2 x 110V wall sconces with dimmer control
- Marine Air 24,000BTU insulated air handler
- Marine Air 12,000BTU insulated air handler
- 2 Overhead ventilation hatches with sliding screens
- Stairway to forward staterooms
- Low large windows for "sit down" visibility
- Bar counter with granite counter top
- Sub-Zero under-counter refrigerator or freezer
- Solid wood crown molding surrounding forward dining lounge
- Silhouette mini blinds, prewired for motorized shades
- Polk Audio speaker system with volume control
- Sharp Aquos 20" LCD TV, pop-up
- Cantalupi Halogen lighting with dimmer controls and 4 x 110V wall sconces
- Cantalupi safety lights at stairway
- Woodwork with satin finish and recessed paneled cabinet doors
- High quality carpet with sound pad

Galley

- Sliding door at starboard passageway
- Dual sliding panels opening to forward lounge
- Granite counter tops with 4" back-splash
- Drawers and cabinets lined with Formica
- Custom pot/pan/dish storage drawers
- Under-cabinet fluorescent lighting
- Sub-Zero 20 cubic foot refrigerator
- Sub-Zero 4.5 cubic foot under-counter 2-drawer freezer
- GE convection oven - New 2014
- Thermador black ceramic Halogen cooktop with granite backsplash - New 2014
- Asko dishwasher
- GE microwave with exhaust fan - New 2014
- Broan trash compactor
- Integrated solid wood cutting board
- Stainless steel sink with Grohe faucet
- InSinkErator instant hot water, and soap dispenser
- InSinkErator stainless garbage disposal with counter top air switch
- Marine Air 12,000BTU insulated air handler
- Silhouette mini blinds
- Cantalupi Halogen lighting with dimmer controls

- Solid wood crown molding surrounding galley
- Solid wood sole
- Woodwork with satin finish

Owner's Stateroom

- King size walk-around bed with drawers and lockers
- Cedar-lined hanging lockers at port and starboard
- Built-in chair with 110V reading sconce with dimmer
- Vanity with vanity stool, beveled mirror, drawers and two 110V sconces
- Built-in 20" LCD TV with bureau drawers below
- Polk Audio speaker system with volume control
- 2 x 110V wall sconce reading lights with dimmer over berth
- 2 Opening port holes
- Insulated and cored aft and forward bulkheads
- 2 Marine Air 9,000BTU insulated air handlers
- Escape hatch at overhead into lobby
- Cantalupi Halogen overhead lighting with dimmer control
- Solid wood crown molding surrounding master stateroom
- Woodwork with satin finish • High quality carpet with sound pad • Safe

Owner's Dual Port & Starboard Heads

- Marble counter tops with 6" back and side splash with ceramic sinks
- Newport Brass "lifetime finish" faucets, recessed tissue holders, towel bars and towel rings
- 2 Head Hunter silent flush toilets
- FRP shower with frameless glass door, offset hinges and integral towel bar with tub option
- Beveled or custom etched glass on shower doors and wall partition
- Cantalupi Halogen overhead lighting with dimmer control
- 2 Opening stainless steel port lights powder-coated to match gel coat
- Ultra quiet ventilation systems
- Woodwork with satin finish and recessed paneled doors
- Solid wood sole

Mid-Guest Stateroom

- Queen size or two twin beds with drawers
- Cedar-lined hanging lockers
- Sharp Aquos 15" LCD TV
- Escape hatch at overhead into dining area
- Cantalupi Halogen overhead lighting with dimmer control

- 2 x 110V wall sconce reading lights with dimmer over berth
- Marine Air 12,000BTU insulated air handler
- 2 Opening port holes
- Polk Audio speaker system with volume control
- Satin finish and recessed panel doors
- High quality carpet with sound pad
- Safe

Mid-Guest Head

- Marble counter tops with 6" back and side splash with ceramic sink
- Marble seat in shower
- Newport Brass "lifetime finish" faucets, recessed tissue holder, towel bars and towel ring
- Head Hunter silent flush toilet
- FRP shower with frameless glass door, offset hinges and integral towel bar with teak grate
- Beveled or custom etched glass on shower doors and wall partition
- Cantalupi Halogen overhead lighting with dimmer control
- Opening stainless steel port hole powder-coated to match gel coat
- Ultra quiet ventilation system
- Woodwork with satin finish and recessed panel doors
- Solid wood sole

Forward Guest Stateroom

- Queen size island bed or V berths with drawers and lockers
- Cedar-lined hanging lockers
- Sharp Aquos 15" LCD TV
- Escape/ventilation hatch to forward deck with sliding screen
- Cantalupi Halogen overhead lighting with dimmer control
- 2 x 110V wall sconce reading lights with dimmer over berth
- Marine Air 9,000BTU insulated air handler
- 2 Opening stainless steel port holes powder-coated to match gel coat
- Polk Audio speaker system with volume control
- Woodwork with satin finish and recessed panel doors
- High quality carpet with sound pad

Forward Guest Head

- Marble counter tops with 6" back and side splash with ceramic sink
- Marble seat in shower
- Newport Brass "lifetime finish" faucets, recessed tissue holder, towel bars and towel ring

- Head Hunter silent flush toilet
- Shower with frameless glass door, offset hinges and integral towel bar with teak grate
- Beveled or custom etched glass on shower door
- Opening stainless steel port hole powder-coated to match gel coat
- Ultra quiet ventilation system
- Cantalupi Halogen overhead lighting with dimmer control
- Woodwork with satin finish and recessed panel doors
- Solid wood sole

Crew Quarters

Crew Cabin:

- Upper and lower bunks
- Cedar hanging lockers
- Sharp Aquos 15" LCD TV
- 2 x 110V reading lights with dimmer over berth
- Marine Air 12,000BTU insulated air handler
- Opening stainless steel port hole powder-coated to match gel coat
- Cantalupi Halogen overhead lighting with dimmer control
- Polk Audio speaker system with volume control
- Woodwork with satin finish and recessed panel doors
- Teak and Holly sole with carpet runner
- Safe

Crew Head:

- Marbelite vanity top with 4" back and side splash
- Newport Brass "lifetime finish" faucets, tissue holder, towel bars and towel ring
- Head Hunter silent flush toilet
- FRP shower with frameless glass door and integral towel bar with teak grate with emergency exit, ventilation door
- Beveled or custom etched glass on shower door
- Cantalupi Halogen overhead lighting with dimmer control
- Ventilation system
- Woodwork with satin finish and recessed panel doors
- Teak and Holly sole

Crew Galley:

- Access from sport deck and engine room
- Corian counter tops
- Drawers and cabinets lined with Formica
- Over and under-counter cabinet storage

- Pantry storage
- Under-cabinet fluorescent lighting
- Sub-Zero under-counter refrigerator/freezer
- Kenyon double burner stovetop
- GE microwave
- Stainless sink with Grohe faucet and soap dispenser
- Cantalupi Halogen overhead lighting with dimmer control
- Opening stainless steel port hole
- Teak and Holly sole

Lazarette

- Storage cabinets
- Drawers and cabinets lined with Formica
- Maytag washer and dryer
- Watertight door to sportdeck
- Cantalupi Halogen overhead lighting with dimmer control
- Marine Air 10,000BTU insulated air handler
- 2 Opening stainless steel port holes
- Cantalupi safety lights at stairway
- Formica walls and work surfaces
- Teak and Holly sole

Additional Standards

- Total fuel tankage (3,600 gallons total)
- Engine room forward workbenches, upper cabinets, sink
- 2 Self-contained Marine Air air conditioning units at crew cabin/head and lazarette
- 100Amp shore power service

Pilothouse

- Furuno MU 170C 17" LCD displays, 24V DC
- Furuno Nav Net 1964CBB/NT 25kW 96NM radar; chart plotter 24V DC only
- Furuno 20M Signal cable
- Furuno ARP 11/10 Target plotter PCB board - must be interfaced to radar BB
- Furuno Nav Net GP1920CBB/VX2 black box chart plotter 24V DC
- Mounts from antenna
- Furuno Nav Net Sounder BBFFI
- Transducer for sounder and block N/C Installation at factory
- Furuno BBWX1 Sirius satellite

- Weather receiver
- Mount for antenna
- Ethernet / 8
- ICOM M604 VHF radio
- ICOM HM162B Command mic
- Digital 532VW VHF antenna 10 DB
- RUP mount systems for VHF antenna
- Newmar horn 60 watt
- Furuno Nav Net cable and connectors
- Furuno interface cable
- Simrad AP 25 auto pilot with AC 20 CPU, RC36 rate compass and RPU 80 drive for power assist
- Hydraulic kit for auto pilot
- C-Map chart for Furuno Nav Net system
- KVH M-7 satellite TV antenna
- KVH TV6 dome only
- Sea View mount for satellite TV antenna
- Satellite TV receivers RF type
- Upgraded to HD-TV
- All boxes are leased from DirecTV and are not included with the boat.
- CCTV switcher and control located in Engine Room and Aft Deck
- GOST Tracking

Исключения

При продаже яхты исключаются личные вещи владельца.

Отказ от ответственности

Компания предоставляет описание судна или яхты добросовестно, но не может гарантировать точность этой информации, а также не ручается за техническое состояние. Покупатель должен проинструктировать своих агентов или оценщиков исследовать представленную информацию более подробно, по собственному желанию. Продажа судна или яхты, изменение цены или снятие с продажи будет происходить без предварительного уведомления.

ФОТОГРАФИИ

Profile



Foward



Forward Deck



Forward Deck



Helm

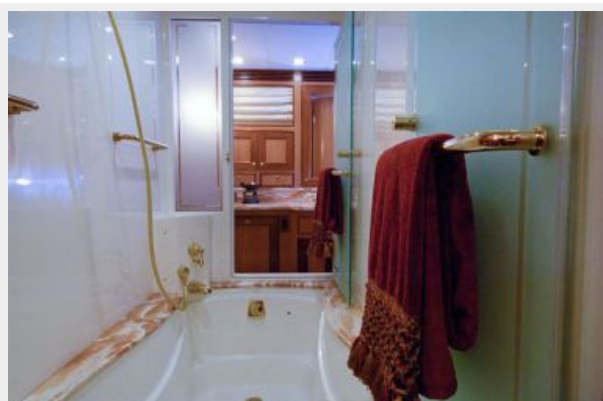


Helm



Pilothouse**Pilothouse Seating****Salon Looking Foward****Salon Looking Aft****Dining****Aft Deck**

Aft Deck**Aft Deck BBQ****Master Stateroom****Master Bath****VIP Stateroom****VIP Stateroom**

VIP Bath**Guest Stateroom****Stairway - Down to Staterooms, Up to Pilothouse****Galley****Galley****Crew Mess**

Crew Galley



Starboard



Walkaround



Walkaround



Tender**Engine Room****GA Plans****GA Plans**

КОНТАКТЫ

Андрей Шестаков (Andrey Shestakov) – ведущий яхтенный брокер отдела продаж яхт и судов компании Shestakov Yacht Sales Inc. Официальный представитель Shestakov Yacht Sales Inc. для русскоговорящих клиентов в центральном офисе компании в Майами/Форт Лодердейл/Флорида/США.

Контактная информация

Email: **andrey@shestakovyachtsales.com**

Web: **shestakovyachtsales.com**

Телефоны

Краснодарский край: **+7(918)465-66-44**

США, Майами, Флорида: **+1(954)274-4435**

Время работы

Понедельник – Суббота: **9:00 - 21:00**
EDT

Воскресенье: **Закрыто**

Адрес



Harbour Towne Marina, 850 NE 3rd St,
STE 213, Dania, FL 33004