

ACCOUNTCESS — HI STAR



Builder: HI STAR

Year Built: 1989

Model: Motor Yacht

Price: PRICE ON APPLICATION

Location: United States

LOA: 55' 0" (16.76m)

Beam: 15' 2" (4.62m)

Min Draft: 4' 1" (1.24m)

Our experienced yacht broker, Andrey Shestakov, will help you choose and buy a yacht that best suits your needs **Accountcess — HI STAR** from our catalogue. Presently, at Shestakov Yacht Sales Inc., we have a wide variety of yachts available on our sale's list. We also work in close contact with all the big yacht manufacturers from all over the world.

If you would like to buy a yacht **Accountcess — HI STAR** or would like help answering any questions concerning purchasing, selling or chartering a yacht, please call **+1(954)274-4435**

TABLE OF CONTENTS

TABLE OF CONTENTS	2
SPECIFICATIONS	3
Overview	3
Basic Information	3
Dimensions	3
Speed, Capacities and Weight	3
Accommodations	3
Hull and Deck Information	4
Engine Information	4
DETAILED INFORMATION	5
Specifications	5
Exclusions	7
Disclaimer	7
PHOTOS	8
CONTACTS	12
Contact details	12
Telephones	12
Office hours	12
Address	12

SPECIFICATIONS

Overview

The 55' Hi-Star is a well proportioned design with several living areas. There are (2) private staterooms with ensuite heads, gourmet galley and large dinette, and main salon. The enclosed aft space is the ultimate gathering area. Comfortable leather furniture, wet bar, TV, incredible views, (2) heat sources, and even a gas/electric fireplace. The enclosed flybridge offers yet another area to relax.

Excellent equipment with bow thruster, diesel furnace, air conditioning, generator & inverter, davit and dinghy, watermaker, complete electronics & SAT TV, and much more.

This vessel is the sole asset of a WA LLC.

Basic Information

Category: Motor Yacht

Model Year: 1989

Year Built: 1989

Country: United States

Dimensions

LOA: 55' 0" (16.76m)

Beam: 15' 2" (4.62m)

Min Draft: 4' 1" (1.24m)

Speed, Capacities and Weight

Water Capacity: 250 Gallons

Fuel Capacity: 500 Gallons

Accommodations

Total Cabins: 2

Total Heads: 2

Hull and Deck Information

Hull Material: Fiberglass

Engine Information

Engines: 2

Manufacturer: Caterpillar

Model: 3208 TA

Fuel Type: Diesel

DETAILED INFORMATION

Specifications

Accommodations: Beginning at the bow, the guest stateroom features a center-line double berth, (2) hanging lockers, drawers under the berth, and an ensuite head. Just aft is the large L-shaped dinette with leather cushions and custom lighting. Opposite is the gourmet galley. Up three steps is the main salon area with a lower helm station and side door to starboard side deck, comfortable settee with updated designer fabric, carpeting, and leather chair. Three steps down aft is the very spacious master stateroom with queen berth, oversized windows facing the cockpit, side portlights, hanging lockers, washer/dryer unit, and ensuite head with stall shower.

The central relaxing/entertaining portion of the boat is the aft deck. This space/room has it all - wet bar with sink and icemaker, fireplace (electric/propane), leather furniture including a sleeper sofa, wing doors going to the forward side decks, Toshiba TV with SAT receiver to watch the games, and carpeting over teak decks. This is a great space to look out over the water. The enclosed flybridge is another gathering space with seating and great views.

The interior features stunning teak woodwork. **Gourmet Galley:** Galley Maid 3-burner electric stove with oven

Sharp Convection Microwave

Broan Trash Compactor

Norcold refrigerator/freezer

Double stainless steel sink

Teak & Holly flooring

Icemaker (aft deck) **Entertainment:**

King-Dome SAT TV antenna system

Jensen stereo (flybridge)

Sony stereo (salon)

Sharp 18" flatscreen TV & Samsung DVD/VHS (aft stateroom)

(2) Toshiba 21" flatscreen TV's **Electrical:**

8kW Northern Lights generator with 720 hours

2500 watt Inverter

(2) 30-amp shore power inlets

(2) 8-D, (4) 6 volt, (1) group 21 batteries

DC volt meter **Deck:**

Maxwell 3500 windlass

45# Plow anchor with approximately 300' of chain and rode

Transom Nick Jackson electric davit

13' Boston Whaler with 25hp Yamaha 4-stroke outboard

Bimini with full enclosure

Cockpit canvas cover

Window mech covers

Enclosed aft deck area with wing doors, lexan/fiberglass dodger and canvas enclosure

Cockpit with transom door, fiberglass swim platform, and cockpit control station **Electronics:**
Furuno NavNet radar

Furuno FCV1100 color video sounder

Raymarine RL70C gps/chart plotter

Icom M-127 VHF

Standard Horizon VHF

Standard Horizon Hailer

ComNav autopilot

Datamarine Dart multi units

Rudder angle indicator

Samsung 24" monitor

Maganavox HDTV (flybridge)

Computer with navigation software

Mechanical & Engine room Keypower hydraulic bow thruster

Webasto diesel furnace

Reverse cycle air conditioning

20-gallon hot water heater (S/S)

600 GPD watermaker (pickled)

Vacu-flush heads

Fuel and water gauges

(2) Halon fire extinguishing systems

Hydraulic power takeoff from starboard engine

Bennett Trim Tabs

MMC electronic engine controls

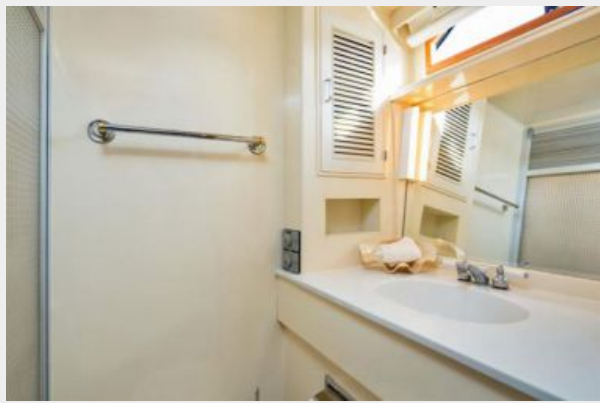
Exclusions

Owner's personal belongings.

Disclaimer

The Company offers the details of this vessel or yacht in good faith but cannot guarantee or warrant the accuracy of this information nor warrant the condition of the vessel. A buyer should instruct his representatives, agents, or his surveyors, to investigate such details as the buyer desires validated. This vessel or yacht is offered subject to prior sale, price change, or withdrawal without notice.

PHOTOS









CONTACTS

Andrey Shestakov, leading yacht broker of the sales department of Shestakov Yacht Sales Inc. Shestakov Yacht Sales Inc., the official representative of the Miami/Fort Lauderdale FL headquarters.

Contact details

Email: andrey@shestakovyachtsales.com

Web: shestakovyachtsales.com/en/

Telephones

USA: +1(954)274-4435

Office hours

Monday – Saturday: **9:00 - 21:00** EDT

Sunday: **closed**

Address



Harbour Towne Marina, 850 NE 3rd St,
STE 213, Dania, FL 33004