

VISION — WESTPORT



Судостроитель: WESTPORT

Год постройки: 2003

Модель: Моторная яхта

Цена: **ЦЕНА ЯХТЫ ПО ЗАПРОСУ**

Местонахождение: United States

Длина общая: 130' 0" (39.62m)

Ширина: 26' 0" (7.92m)

Макс. осадка: 6' 6" (1.98m)

Крейс. скорость: 22 Kts. (25 MPH)

Макс. скорость: 28 Kts. (32 MPH)

Купить **VISION — WESTPORT** а также выбрать подходящую вам яхту из нашего каталога яхт вам поможет опытный яхтенный брокер Андрей Шестаков. На сегодняшний день компания **Shestakov Yacht Sales Inc.** имеет большое количество яхт в собственном списке продаж, а также тесно сотрудничает со всеми крупными яхтенными производителями по всему миру.

Для того чтобы купить яхту **VISION — WESTPORT** а также проконсультироваться по любому вопросу связанному с покупкой, продажей, чартером яхт позвоните по телефону **+7(918)465-66-44**.

ОГЛАВЛЕНИЕ

ОГЛАВЛЕНИЕ	2
ХАРАКТЕРИСТИКИ	4
Обзор	4
Основная информация	5
Размеры	5
Скорость, вместимость и масса	5
Размещение	6
Корпус и палуба	6
Информация о двигателе	6
ПОДРОБНОЕ ОПИСАНИЕ	7
Electronics	7
Miscellaneous Equipment	7
Electrical Equipment	8
Control Room	9
Mechanical	9
Foredeck	10
Fly Bridge	10
Sundeck	10
Upper Deck	11
Captain & Crew Quarters	11
Port and Starboard Guest Staterooms	11
Laundry Room	12
VIP Port & Starboard Staterooms	12
Master Stateroom	13
Pilothouse	13
Galley/Dinette	14
Salon	14
Aft Deck	15

Additional Upgrades & Service	15
Highlights	16
Disclaimer	16
Exclusions	17
Исключения	17
Отказ от ответственности	17
ФОТОГРАФИИ	18
КОНТАКТЫ	25
Контактная информация	25
Телефоны	25
Время работы	25
Адрес	25

ХАРАКТЕРИСТИКИ

Обзор

All Westport yachts are designed to provide unsurpassed luxury, comfort and style with functional, elegant interiors arranged for privacy, convenience and relaxation. A five-stateroom arrangement with on-deck master stateroom, large salon, dining room and expansive deck areas ensure thoroughly enjoyable extended cruising. More comfort through advanced technology - unseen yet critical elements of comfort have been taken into account by Westport. "Quiet acoustics" reduce sound levels to those of a high-end luxury car.

VISION can accommodate 10 in five luxurious staterooms with an on-deck Master Stateroom and four Guest Staterooms. There are crew accommodations for seven, which include a Captain's Cabin and Engineer's Cabin.

The foyer will lead you aft to the spacious Main Salon and formal dining area. Looking all the way aft on the port side there is a game table with four upholstered chairs. Moving forward one finds two comfortable chenille covered sofas on both sides facing each other with an oriental rug in the center creating a casual conversation area. A 40" PAL/NTSC LCD Flat Screen TV hidden (raised and lowered by remote) in a cherry wood buffet with granite countertop separates the Salon from the dining area. The dining table accommodates ten guests. Forward to port is the Galley with plenty of storage and Corian countertops, very nicely appointed with professional appliances inclusive of a pop-up vent for the six burner stove. All equipment is stainless steel and features ample seating in the U-Shaped dinette nook that is perfect for a casual breakfast or lunch. Moving forward is the on-deck Master Stateroom with centerline king size bed with innerspring mattress and upholstered headboard. The master bathroom has Crema Marfil marble tiles, whirlpool bath, etched-glass enclosed shower, his & her vanities with Kohler vintage sink and two Headhunter Royal Flush Hydro Vac toilets. Further aft mid ship stairs down leads you to the four Guest Staterooms located just off the foyer equipped with laundry facilities. Each stateroom is elegantly decorated and has an ensuite head with enclosed shower. Two (2) king berths, one (1) twin berth stateroom and one (1) single berth stateroom with a treadmill (no second berth). Forward of the Sky Lounge is the Pilothouse with raised semi-circular seating for all guests to enjoy the view while cruising. All the way port is the Navigation Station. There are very nice walk-around side decks to the Skylounge and Pilothouse with Pilothouse doors and a staircase centerline going forward and down the foredeck where there is a circular seating area (nook) with excellent visibility while cruising & a iPod docking station. The Sundeck features two built-in seating areas forward with tables, a wet bar, barbeque and a large sun area with adjustable chaise lounges. Leading aft from the Main Salon through the double stainless steel doors is the beautiful and spacious Aft Deck which is one of the nicest features of "**VISION**". A large teak circular table seats eight guests, occasional chairs to port and starboard, as well as, banquette seating across the transom all of which is protected by the Aft Deck overhang. On the port corner is a very comfortable walk-behind, full service bar with icemaker and refrigerator, and three teak bar chairs with cushions. Positioned perfectly behind the bar and raised for

unobstructed view by all on the Aft Deck is a 32" PAL/NTSC LCD Flat Screen TV which is piped in throughout the Aft Deck for the most incredible sound equivalent to concert level. Starboard and forward is the molded staircase, which leads to the Jacuzzi, Boat Deck and additional seating aft of the Sky Lounge. To starboard are steps leading from the Aft Deck to the Upper Deck/Boat Deck consisting of an L-Shaped settee to port and a 6-8 person Jacuzzi hot tub. To starboard entering through a double sliding door is the Sky Lounge which offers a complete entertainment center with 42" TV, wet bar, game table, and large windows offering a panoramic view while cruising or at anchor. The Sun Deck is accessed via a staircase from the Boat Deck

Recent borescope and survey of engines show them to be in excellent condition. Generators rebuilt in March 2016. New PTO's (Power Take Offs) March 2016. New back-up Mach 5 water pump installed March 2016.

Основная информация

Тип судна: Моторная яхта	Подкатегория: Tri-Deck
Модельный год: 2003	Год постройки: 2003
Год обновления: 2014	Страна: United States
Верх: Hardtop	

Размеры

Длина общая: 130' 0" (39.62m)	Ширина: 26' 0" (7.92m)
Макс. осадка: 6' 6" (1.98m)	

Скорость, вместимость и масса

Крейс. скорость: 22 Kts. (25 MPH)	Дальность на крейсерской скорости: 3450
Макс. скорость: 28 Kts. (32 MPH)	Чистый вес: 330 Pounds
Вместимость воды: 1620 Gallons	Вместимость сточного бака: 1360 Gallons
Объем топливного бака: 9900 Gallons	

Размещение

Всего кают: 5

Спальные места: 10

Всего ком. состава: 7

Каюта капитана: Да

Спальных мест экипажа: 4

Корпус и палуба

Материал корпуса: Fiberglass

Материал палубы: Teak and Fiberglass

Комплектация корпуса: Modified V-Hull

Дизайнер корпуса: Bill Garden

Дизайнер экстерьера: Gregory C.
Marshall Naval Architect Ltd.

Дизайнер интерьера: Pacific Custom
Interiors

Информация о двигателе

Двигатели: 2

Производитель: MTU

Модель: 12V 4000 M90

Тип двигателя: Inboard

Тип топлива: Diesel

ПОДРОБНОЕ ОПИСАНИЕ

Electronics

- Panasonic station telephone system w/ 4 programmable phones, 14 speakerphones, 17 jack locations, midship shore inlet with 100' combo CATV/Telephone shore cord
- KVH TracPhone w/phone switch satellite telephone
- Sea Tel satellite TV system with 40" dome
- Tellular CDMA digital cellular black box single mode phone
- (2) Icom VHF radios in Pilothouse, one each Icom M-127 in crew lounge and galley
- (1) handheld VHF standard with desktop charger
- Dell laptop with docking station and Lexmark scanner/copier/fax and printer, Acer desktop
- Ritchie Globe Masters compass in Pilothouse
- AIS System
- Nobeltec wth complete Med Charts

- (2) Furuno 96 mile radars w/20" LCD flat screen monitors with / ARPA
- Furuno Felcom - 12 standard "C" w/roll printer
- JRC SAT compass JLR-21
- 12' Garmin GPSMAP
- Transas Chart System w/20" flat screen monitor
- Loud hailer integrated with VHF
- B&G Hydra 2000 wind/depth/speed system with full function display on dash & in crew lounge
- Simrad AP70 autopilot (new February 2015)
- Westport proprietary vessel information and control (VIC) system
- Northern Airborne Technology G.P.I.R.B.
- Furuno video sounder with 15" LCD flat screen monitor
- Furuno Weatherfax (un-installed, cables & wires remain in place but unit is stored under Pilothouse seats
- Furuno Navtex
- NA-SART
- Naiad model 520-2.50 Roll Stabilizer System wth 25.1' fins with SOA capability

Miscellaneous Equipment

- 17' DLX AB with 115 Evinrude E-TEC, Garmin, Fusion stereo (all new in 2015)
- (2) 2014 Yamaha Waverunner VLX Cruiser watercraft
- Sumbrella covers for: Flybridge settee, seating, tender, bow seat and aft deck seating
- Northern lights spare parts kit
- Sea Recovery spare parts kit
- Ship spare kit

- Opacmare two-section hydraulic passarelle w/handrail and wireless control
- (1) Marquipt 24" x 9 step sea stair boarding ladder w/port & starboard mounts
- Custom swim ladder on transom
- Bow & stern flag staffs
- Port lights Freeman w/screens
- Anchors dual Poole style 270 kg (1) w/400' x 5/8" chain, (1) w/300' x 5/8" chain with Maxwell #6000 hydraulic winches & chain
- Stern (2) Maxwell capstans
- Utility storage Aft with Traulsen commercial double wide
- Stainless steel refrigerator/freezer, Aft Engineer's cabin with custom Size berth, dresser, wardrobe, head w/vanity & stall shower, air conditioning, 13" TV with VCR, AM/FM stereo w/CD
- (1) 9 step Deluxe Marquipt 24" boarding ladder with brackets at port & starboard gates
- Wing doors outside skylounge
- Bottom job in Summer of 2014. Haul-out scheduled for May of 2015, which will include new propellers and a bottom job.

- Wing stations port & starboard on Portuguese bridge w/electronic engine controls, synchronizer, start & stops, jog lever, bow thruster and rudder indicator
- (1) Charles smart "Y" 100 shore adaptor
- Swim Ladder: Custom on transom, powder coated white (bottom of ladder painted black to match hull)
- Custom swim ladder on transom, powder coated white, bottom of ladder painted black to match hull
- Cushions - Aft deck settee, bow sun pad, boat deck lounge settee and observation deck settee, Sunbrella fabric with dry fast foam fill
- Stern flagstaff rigged with 1/8" nylon line, bow jack staff rigged with 1/8" nylon line
- Wheel puller: Built to pull vessel's propellers
- Gas tank 100 gallon in swim platform w/air dispensing pump
- Dripless shaft & rudder logs
- Dual steering & stabilizer pumps on main engines
- Lightning protection with Dyna plate and mast probe
- A Headhunter MSD sewage treatment plant was added in 2007. Serviced in April 2015.
- 6-Step Westport configured S/S Swim Ladder (Marquipt)

Electrical Equipment

- All gel-cell type batteries
- Battery chargers
- (3) King heater/defrosters on Pilothouse windshield
- (2) 12V DC lights, at navigator's area and captain's desk
- (2) 100 amp isolation transformers on each inlet with boost capability
- 110V AC halogen recessed light fixtures

- 24V & 110V AC indirect rope lighting
- Shore Power - (1) 100 amp receptacle w/100' shore cord & (1) 100 amp Glendenning reel with a 100' cord in starboard bustle
- TV & phone connections located at Glendenning with (1) 100' TV/phone cord
- (2) 65kW 1800 RPM Northern Lights Generators w/sound shield, muffler, exhaust water separator, Pilothouse remote start. **Port generator rebuilt March 2016, Starboard generator rebuilt March 2016.** New Power Take-Offs March 2016, New injectors Port and Starboard.
- AC 75 1/2N Shore Power Converter

- All staterooms have 110V receptacles for table lamps, except crew quarters have 24V receptacles
- (1) Searchlight located on mast with single control
- 24V DC shower lights with white trim
- Navigation lights with operation monitored by VIC system, includes bow light, stern light, side lights & anchor light
- General lighting - Vimar receptacles & switching throughout
- Optional back-up hydraulic pump for anchor system
- All distribution panels have engraved faceplates
- Exterior lighting at house sides, foredeck, aft deck stairs, aft deck overhang & Flybridge deck lights lightning protection with hull Dyna plate & mast probe

Control Room

- Sears 12-drawer tool box painted white with tools
- Work bench w/4" vise

- Storage cabinets
- (2) 1200 GPD watermakers

Mechanical

- Twin MTU/DDC 12V4000 with 2735HP
- Recent bore scope and survey of engines show them to be in excellent condition
- Twin disc 2:5:1 ratio
- Bow thruster (upgraded to American) 16"/50HP with dual prop
- Naiad stabilizers w/12 sq. ft. fins Multi-Sea 2000 with dual pumps
- (2) Sea Recovery Watermakers 1200 GPD each
- Fresh water system (2) 220v pumps w/24v back-up pump
- (13) auto/manual 24v bilge pump (2) 110v AC pumps with 1 1/2" lines with manifold
- Air compressor / 220v with water separator, regulator, 18' self coiling hose with quick disconnect
- Fuel filters dual Detroit Separ main engines, single filter generators. Serviced and new

filters at 4,600 hours

- Windshield wipers (3) Exalto w/delay & freshwater washdowns
- Steering Jastrom commercial grade w/dual pumps
- Shafts Aquamet 22 4 ½" w/dripleless shaft logs
- Gensets, main engines, gears, 78 gallon fresh oil, 33 gallon waste oil tank
- Fuel transfer system 110V with timer & flo meter
- Head System: Head Hunter fresh water with 240v + 24v discharge pumps and fiberglass 1360 gallon holding tank
- Grey Water System: 940 gallon tank with 110v + 24v pumps
- Fire System: auto/manual
- Props 50" x 44" five (5) blade Michigan
- Air conditioning Aqua Air chilled water system with make up air with variable frequency drives approximately 20 tons
- Rudders 10 sq. ft. with dripleless logs
- Lube oil change system 110V pump with quick disconnect

Foredeck

- Bow sun lounge with cushions, cover storage locker below
- Storage lockers below
- Built-in keyhole seat with cushions & covers, remote stereo speakers with volume control

Fly Bridge

- Double Stidd Bench
- Jenn Aire grill mounted under corion cover
- Sink
- Refrigerator (new Magic Chef, April 2015)
- Two (2) Curve settee with table (one port & one starboard)
- Flybridge speakers
- Factory Hardtop
- Bar on Flybridge with four (4) bar stools

Sundeck

- Molded settee with cushions & covers and two (2) tables (no covers for Flybridge tables)
- Sun lounge with cushions and covers
- Wet bar with Corian top, sink, hot & cold water, TV/phone jacks
- Ice maker, Isotherm (new March 2015)

- Refrigerator, Magic Chef (new April 2015)
- BBQ-Jenn-Aire electric grill & BBQ-stainless steel cover
- Pioneer audio/video
- AM/FM Stereo with CD player
- Custom Venturi windshield in polished stainless steel frame
- Kahlenburg air horn
- Welded aluminum mast w/electronics, anchor light, deck lighting and air horn with optional hard top
- Storage lockers were retro-fitted under port & starboard bench seats

Upper Deck

- Teak over composite except tender area, which is non-skid
- Jacuzzi hot tub with 11Kw heater
- Molded-in settee with cushions, cover and locker space under
- 40" Teak cocktail table
- Nautical Structures davit 2000 lbs hydraulic davit CEZ2000-EX
- Life raft 16 man Zodiac canister life raft w/chocks (re-certified April 2015)
- (2) Wing stations with electronic engine controls just outside PH port & starboard
- Stern flagstaff w/5' x 8' United States flag
- Surround sound system w/speakers
- Tender 17' DLX AB w/115hp Evinrude E-TEC w/cover, Garmin GPS depth finder, Fusion Stereo

Captain & Crew Quarters

- Captain has custom full size berth with storage below and crew has (4) custom twin berths w/US foam fire-rated mattresses
- Doors are solid cherry framed with Madrona burl panels
- Crew lounge/galley has upholstered settee, built-in refrigerator/freezer, stainless Sharp microwave & s/s sink
- Wardrobe is lined with aromatic cedar, automatic light, stainless closet rod and clear shelf with keeper
- Crew individual flip down 17" TV/DVD combo
- Maytag Washer & dryer
- 110V AC recessed room lights, 12V DC reading lights
- Entertainment center in crew lounge with 20" TV, digital DVD player & 1 pair speakers

Port and Starboard Guest Staterooms

- Custom twin berths with innerspring mattresses and upholstered headboards
- 110V recessed room and reading lights
- Custom recess lighting under berths and above soffits
- Indirect rope accent lighting under berth and above soffit
- Bronze A-look mirrors on bulkhead above headboard

- Lined aromatic cedar wardrobe, with automatic light, stainless closet rod, cedar shelf with keeper and clear full-length mirror on wardrobe door, inside door
- Shoji screen blinds
- One (1) each - three drawer movable nightstand
- Entertainment center with cherry doors
- 26" PAL/NTSC LCD Flat Screen TV
- Denon Stereo Receiver

Port & Starboard Guest Heads:

- Headhunter Royal Flush Hydro Vac toilets
- Kohler fiberglass shower with frameless tempered glass doors, Grohe thermostat and Hansa fixtures and sealed shower light
- Light Emparador light weight marble floor

Laundry Room

Maytag Washer/Dryer stackable

VIP Port & Starboard Staterooms

- California king size beds with innerspring mattresses & upholstered headboards
- (2) Drawer storage under
- 110V AC recessed room lights
- Indirect rope accent lighting under berth and above soffit
- Clear full length mirror on wardrobe door, inside door
- Shoji screen blinds

- Lined aromatic cedar wardrobe with automatic light, s/s closet rod and cedar shelf with keeper
- Two (2) three-drawer nightstands
- Entertainment center with cherry doors
- 26" PAL/NTSC LCD Flat Screen TV
- Denon Stereo Receiver

VIP Port & Starboard Heads:

- Headhunter Royal Flush Hydro Vac toilets
- Frameless shower with tempered glass doors and Grohe thermostat and Hansa fixtures with sealed shower light
- Light Emparador light weight marble floor
- Kohler vintage sinks, with Jado Oriental fixtures, with silver nickel/gold finish
- Wall mirror above vanity
- 110V AC recessed room lights and vanity lighting

Master Stateroom

- Centerline king size bed with innerspring mattress and upholstered headboard
- Drawers under the bed
- Desk & settee
- Recessed lighting
- Hunter Douglas Silhouette blinds w/fixed Roman shade valances
- Madrona Burl inlay dressers & nightstands w/solid cherry edges
- Walk-in cedar-lined closet
- 32" PAL/NTSC LCD Flat Screen TV
- Crestron 4" Touch Screen Remote
- Denon stereo receiver
- Denon DVD player DVM-1805

MASTER HEAD:

- Light Emparador light weight marble floor
- Whirlpool bath, etched-glass enclosed shower
- His & hers vanities with Kohler vintage sinks
- (2) Headhunter Royal Flush Hydro Vac toilets

Pilothouse

- Stainless steel 24" Destroyer Wheel with Jastrom Power Steering
- Engine Instrumentation - DDC/MTU DDEC
- AM/FM/CD Player with speakers, &VCR
- Counters - black laminate with cherry trim
- Stain resistant carpeting
- SART Pilothouse Console
- Leather covered dash panels
- Chart drawer for chart storage

- Leather settee
- Madrona Burl with solid cherry edge settee table
- (2) Crown classic helm chairs
- Desk with laptop pc storage & swing-out stool
- Secondary fully integrated redundant Nav computer

Galley/Dinette

- Espresso machine & drip coffee machine
- 48" Kitchen Aid refrigerator
- Two (2) Gaggenau Induction Cooktops
- One (1) Gaggenau induction Teppanyaki Cooktop
- S/S Island Hood
- Insinkerator garbage disposal
- Broan trash compactor
- Asko dishwasher

- Stainless steel sink
- Stainless Sharp microwave
- Azrock commercial vinyl flooring
- Built-in dinette settee
- Granite counter tops (new May 2015)
- 20" PAL/NTSC LCD Flat Screen TV with DVD Combo
- Miele Commercial Dishwasher
- Ipod Connection Cables

Salon

- (2) Sofas
- (1) Cocktail table
- Gaming table
- (4) Game chairs
- (2) End tables
- Wood formal dining table with (8) chairs
- Stainless steel framed glass sliding door
- Fixed Roman shades
- VCR
- New custom dining table iwth burl inlays done in high gloss

- 40" PAL/NTSC LCD Flat Screen TV on electric lift w/remote in forward cabinet
- Ipod docking station
- Crestron 4" Touch Panel remote
- Surround sound system with speakers

- Storage for CDs, video tapes and DVDs
- Wine Enthusiast, Compact 50 wine cooler in custom cherry cabinet

Aft Deck

- Aft deck bar with TV/Phone jacks, Whirlpool refrigerator, Whirlpool icemaker, Corian Magna Savannah top, sink with hot & cold water, & storage
- Molded-in settee with cushions & covers
- (1) teak bench with cushions
- 72" Round Westcoast teak dining table with fixed polished stainless steel pedestal by Crown, Ltd.
- (3) Teak bar chairs with cushions

- (8) Teak dining chairs with cushions
- (2) Teak lounge chairs with cushions
- (1) Teak side table
- 32" PAL/NTSC LCD Flat Screen TV
- Stereo volume control & speakers from main system

- Textaline privacy screen

- Refrigerator, Magic Chef (new April 2015)
- Icemaker, Isotherm (new April 2015)

Additional Upgrades & Service

- Completely new/upgraded DeAngelo exhaust on port and starboard main engines – April 2015
- New ASEA power converters (2) April 2015.
- New injection pumps on generators - August 2015
- New raw water pumps on generators – August 2015
- New teak deck on swim platform – April 2015
- All teak decks sanded July 2015
- New 5 ton AC chillers (3)-(one replaced December 2014, two replaced August 2015).
- New granite counters in galley April 2015
- New corian table in crews quarters - April 2015

- New Direct TV SAT receivers in Master, Crew, Salon, Sky Lounge, and Aft Deck – February 2015
- New JRC Sat Compass – February 2015
- New Simrad AP70 Auto Pilot – February 2015
- New 12'Garmin – February 2015
- New Mach 5 fresh water pumps (2) April 2015
- New bow cushions – April 2015
- Water makers serviced August 2015
- Pasarelle serviced – April 2015
- New condenser in freezer/fridge in lazarette – August 2015
- New 17 DLX AB with 115 Evinrude E-TEC, Garmin, Fusion Stereo – February 2015 (approximately 20 hours total)
- (2) 2014 Yamaha Waverunner VLX Cruiser watercraft - January 2015 (approximately 20 hours on each).
- Vision is scheduled to be hauled for new bottom paint in October 2015
- Both generators rebuilt March 2016
- New PTO's (Power Take-Offs) March 2016
- New 2nd Mach 5 water pump added as back-up system in March 2016

Highlights

Zero Speed Stabilization "At anchor" Sea Electrical Connectors already done New Apple TV's throughout 22 Knot Cruise Upgraded Bow Thruster Waste Treatment Center Both generators rebuilt in March of 2016 New PTO's (Power Take-Offs) March 2016 New 2nd Mach 5 water pump added as back-up system March 2016

Disclaimer

The Company offers the details of this vessel in good faith but cannot guarantee or warrant the accuracy of this information nor warrant the condition of the vessel. A buyer should instruct his agents, or his surveyors, to investigate such details as the buyer desires validated. This vessel is offered subject to prior sale, price change, or withdrawal without notice.

Exclusions

Seller's Personal Effects Humidor Decorative Glass Bowl All Fishing Gear, Rods and Reels
Midnight Express Tender

Исключения

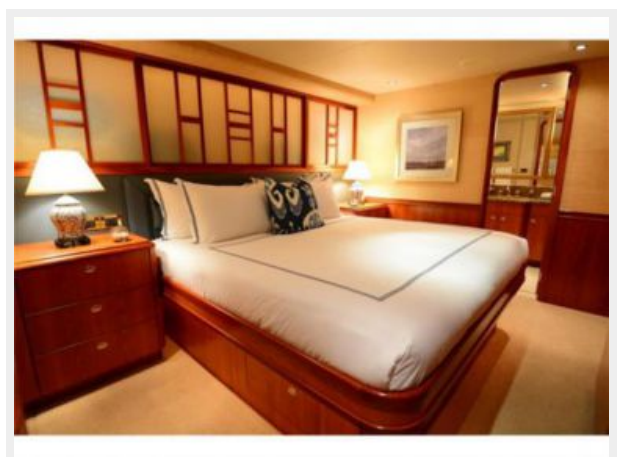
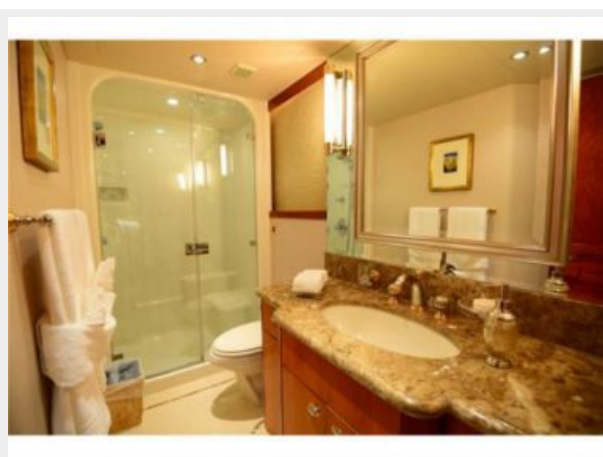
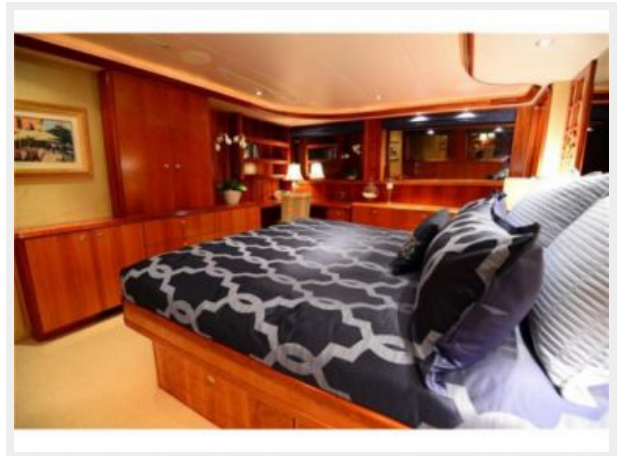
При продаже яхты исключаются личные вещи владельца.

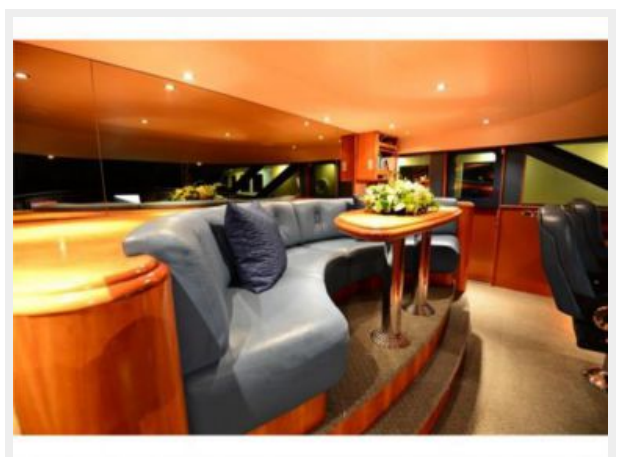
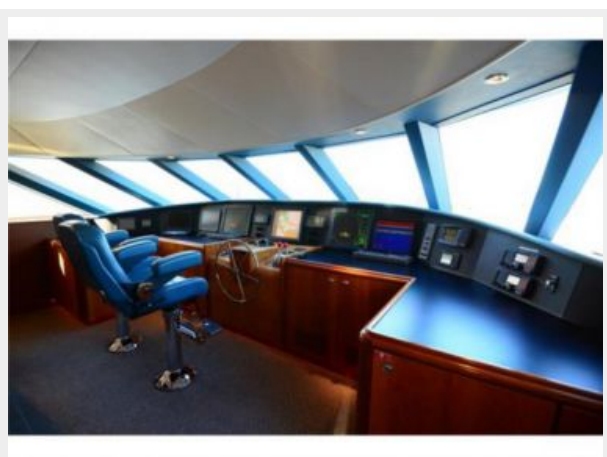
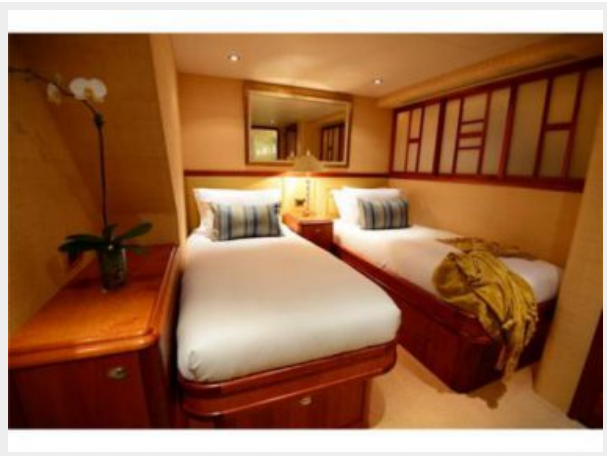
Отказ от ответственности

Компания предоставляет описание судна или яхты добросовестно, но не может гарантировать точность этой информации, а также не ручается за техническое состояние. Покупатель должен проинструктировать своих агентов или оценщиков исследовать представленную информацию более подробно, по собственному желанию. Продажа судна или яхты, изменение цены или снятие с продажи будет происходить без предварительного уведомления.

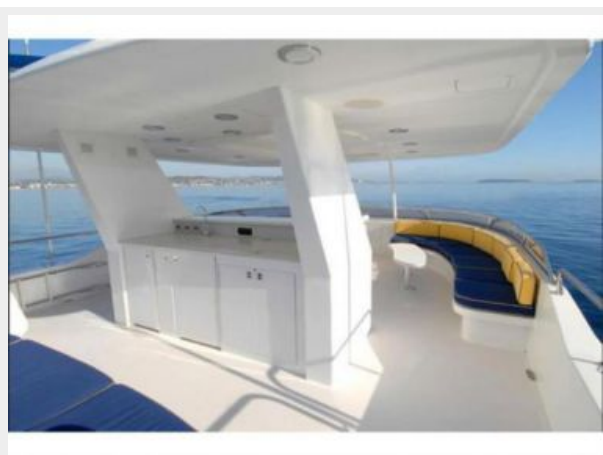
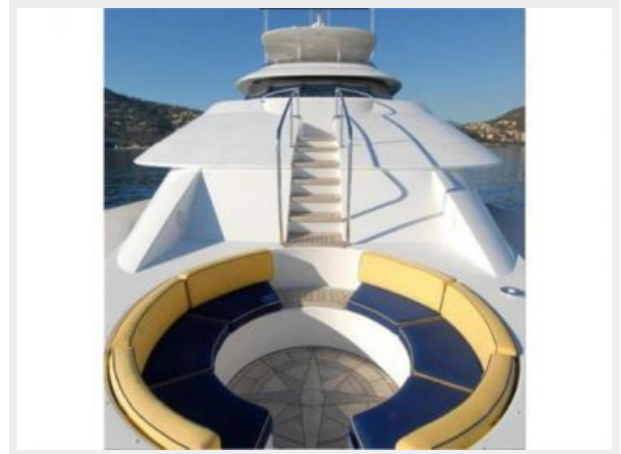
ФОТОГРАФИИ



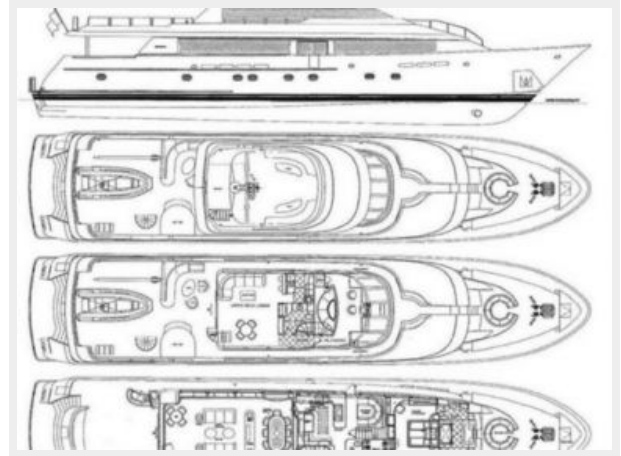












КОНТАКТЫ

Андрей Шестаков (Andrey Shestakov) – ведущий яхтенный брокер отдела продаж яхт и судов компании Shestakov Yacht Sales Inc. Официальный представитель Shestakov Yacht Sales Inc. для русскоговорящих клиентов в центральном офисе компании в Майами/Форт Лодердейл/Флорида/США.

Контактная информация

Email: andrey@shestakovyachtsales.com

Web: shestakovyachtsales.com

Телефоны

Краснодарский край: **+7(918)465-66-44**

США, Майами, Флорида: **+1(954)274-4435**

Время работы

Понедельник – Суббота: **9:00 - 21:00**
EDT

Воскресенье: **Закрето**

Адрес



Harbour Towne Marina, 850 NE 3rd St,
STE 213, Dania, FL 33004