

SMALL WORLD — BURGER



Builder: BURGER

Year Built: 1976

Model: Motor Yacht

Price: PRICE ON APPLICATION

Location: United States

LOA: 72' 0" (21.95m)

Beam: 18' 7" (5.66m)

Cruise Speed: 13 Kts. (15 MPH)

Max Speed: 14 Kts. (16 MPH)

Our experienced yacht broker, Andrey Shestakov, will help you choose and buy a yacht that best suits your needs **Small World — BURGER** from our catalogue. Presently, at Shestakov Yacht Sales Inc., we have a wide variety of yachts available on our sale's list. We also work in close contact with all the big yacht manufacturers from all over the world.

If you would like to buy a yacht **Small World — BURGER** or would like help answering any questions concerning purchasing, selling or chartering a yacht, please call **+1(954)274-4435**

TABLE OF CONTENTS

TABLE OF CONTENTS	2
SPECIFICATIONS	5
Basic Information	5
Dimensions	5
Speed, Capacities and Weight	5
Accommodations	5
Hull and Deck Information	5
Engine Information	5
DETAILED INFORMATION	6
Vessel Walkthrough	6
Main Salon	6
Galley	6
Master Stateroom	6
Master Head	7
Guest Staterooms - Port & Starboard	7
Crew Quarters	7
Flybridge and Boat Deck	7
Pilothouse	8
Aft Salon	8
Electrical System	8
Deck Equipment	9
Engine Room/Mechanical Equipment	9
Exclusions	10
Exclusions	10
Disclaimer	10
PHOTOS	11
Salon	11
Salon	11

Salon	11
Salon	11
Aft Deck	12
Aft Deck	12
Head	12
Head	12
Galley	13
Galley	13
Crew Quarters	13
Head	13
Crew Quarters	14
Crew Quarters	14
Stairway	14
Master Stateroom	14
Master Stateroom	14
Master Stateroom	14
Closet	15
Master Stateroom	15
Head	15
Head	15
Companionway	16
Guest Stateroom	16
Head	16
Guest Stateroom	16
Head	17
Head	17
Closet	17
Guest Stateroom	17
Guest Stateroom	18

Pilothouse	18
Pilothouse	18
Flybridge Helm	18
Aft Flybridge	18
Aft Flybridge	18
Passageway	19
Flybridge	19
Passageway	19
Forward Deck	19
Engine Room	20
Engine Room	20
Engine Room	20
Engine Room	20
Engine Room	20
Engine Room	20
SMALL WORLD	21
CONTACTS	22
Contact details	22
Telephones	22
Office hours	22
Address	22

SPECIFICATIONS

Basic Information

Category: Motor Yacht

Model Year: 1976

Year Built: 1976

Country: United States

Dimensions

LOA: 72' 0" (21.95m)

Beam: 18' 7" (5.66m)

Speed, Capacities and Weight

Cruise Speed: 13 Kts. (15 MPH)

Max Speed: 14 Kts. (16 MPH)

Water Capacity: 1320 Gallons

Fuel Capacity: 2400 Gallons

Accommodations

Total Cabins: 3

Hull and Deck Information

Hull Material: Aluminum

Engine Information

Engines: 2

Manufacturer: Detroit Diesel

Model: 12V71N

Engine Type: Inboard

Fuel Type: Diesel

DETAILED INFORMATION

Vessel Walkthrough

SMALL WORLD offers three double staterooms aft, each with an ensuite head and shower. The forward crew quarters can accommodate up to four people and has access to a full beam stand-up engine room. The pilothouse is spacious, there is a fully updated galley, powder room in addition to the mahogany-like Corita wood paneling and cabinetry in the salon. The pilothouse provides access to the flybridge was built by Burger Boat and includes additional storage on the upper deck.

Main Salon

- Large windows along both sides of salon and across the aft bulkhead
- Center windows can open
- Naturally finished Corita wood with a mahogany tone Lightly colored leatherette sectional seating forward with a cocktail table in the center
- Additional seating is aft
- Built-in wet bar is aft to starboard which includes sink, ice maker, and bar supply storage

Galley

- Located aft from the pilothouse to starboard with a powder room to starboard
- GE 4 -Burner range and oven
- Whirlpool Refrigerator
- Galanz Microwave
- Double stainless steel sink
- Garbage disposal
- Wet bar
- KitchenAid icemaker

Master Stateroom

- Walkaround king berth
- Bedside cabinet to port and starboard
- Mounted reading lamps with matching table lamps
- Built-in bureaus on both sides of stateroom
- Large linen drawers on each side of bed
- His and hers closets
- Television

Master Head

- Shower and tub
- Vanity
- Opening ports

Guest Staterooms - Port & Starboard

- Forward of the master
- Linen and storage lockers with louvered doors are accessed from the companionway
- Twin lower berths
- Bedside vanities
- Dual reading lamps
- Hanging locker
- Large drawers beneath bed
- Head with full amenities including a stall shower

Crew Quarters

- First crew cabin located forward to starboard
- Accessed from the pilothouse
- Upper and lower berths
- Second crew cabin located aft to port with accommodations for two on a tapered double berth
- Crew head and stall shower are between the two crew cabins
- Crew lounge is aft to starboard
- Access to engine room
- Overhead deck hatch provides access to the aft foredeck

Flybridge and Boat Deck

- Aft of the flybridge is the boat deck with chocked cradles for the tender
- Autopilot remote Controls for engines, stabilizers, air horns, engine synchronizer
- Engine instrumentation
- Forward flybridge console with a centerline helm station
- Handheld VHF
- L-shaped settee with dry storage beneath, to port
- Pedestal mounted helm chair with footrests
- Radar mast is centered and has storage compartments beneath
- Tender chocks and a davit, no tender included

Pilothouse

Forward on the main deck and just up from the crew quarters is the teak lined pilothouse. There is excellent visibility forward and to each side with three large windows across the front. Sliding, windowed side doors, equipped with folding screen doors, provide both visibility and easy access to the walk-around side decks. An upholstered bench seat aft of the helm can seat 2-3 persons and has chart storage in large drawers beneath. A stairway to port provides access to the flybridge area. A passageway offset to starboard opens aft to the galley and main salon area

- Icom VHF - IC M4024 •Furuno NavNet Radar w/ C-Map NT •Northstar 800 GPS •Robertson autopilot AP45 •Wesmar Stabilizers - CPS 1000 Gyro Controller •Bogen Intercom system
- Raytheon Navimatic •Datamarine International Offshore Speed indicator •Sitex FL-10 depth sounder •Danforth voltmeter •Standard MPS loud hailer and fog signal •Engine instrumentation includes tachometers, oil pressure, engine temperature

Aft Salon

- Full beam •Surrounded by windows on both sides and across the stern •Opening windows port and starboard and through the stern enclosure with a hinged window and weather rail gate offset to starboard for access to the transom ladder and swim platform below
- Wing doors to port and starboard lead forward to the open side decks •Large lazarette compartment can be accessed through a salon deck hatch for servicing rudders, steering gear, engine starting batteries, and equipment storage

Electrical System

- 110V, 220V AC electrical system
- 12V & 32V DC electrical system
- 12V accessory outlets at FB, pilothouse, and aft lounge for charging cell phones or powering up 12V accessories.
- (2) 12 volt batteries for each generator
- (2) 50 amp 220VAC shore power cords
- (2) Banks of 12V batteries in engine room
- (2) Banks of 32V batteries in lazarette
- (2) John Deere 20kw Powertech generators, 1,050 hours since new
- Capac hull monitor
- Fully updated Wards Marine distribution panel 2006
- (2) Isolation transformers
- LaMarch 32 volt automatic battery charger

- ProMarine 12 volt automatic battery charger
- Sentry 12V automatic battery charger
- Separate 12 V system for FB electronics
- Stabiline voltage regulator
- Wards galvanic isolater
-

Deck Equipment

- (2) anchors, 85S Danforth, 35 H Danforth
- 32V Anchor windlass
- Air Condition throughout including aft deck
- Aluminum sole mount boarding ladder
- Burger anchor davit
- Fenders and Lines
- Forward cuddy storage accessed from port to starboard
- Idea vertical capstan
- Lazarette compartment aft
- Leather sectional and dining table/chairs on aft deck
- MarQuipt 7-step Tide Ride sea stairs
- Plexiglass wing doors
- Port and starboard 'sailboat' fender tracks
- Whirlpool washer and dryer in engine room

Engine Room/Mechanical Equipment

Engine room is accessed aft from the crew quarters through a watertight bulkhead door. Engine room is full beam and standing headroom.

- 2 1/2" Propeller shafts
- 4-Blade propellers
- Acoustical and thermal engine room insulation
- Bennett Trim tabs
- Black and gray water sump tanks
- Capital transmissions
- Craftsman tool box
- Cruisair air conditioning w/ reverse cycle - 7 units
- Dripless shaft seals
- Dripless stuffing boxes
- Engine alarms and emergency stops
- Galley Maid head
- GM 12V71 N main engines, 450 hp each, approx. 4,500 hours since overhaul

- Hart fuel tank gauge
- Hersey fuel tank gauge
- Hynautic hydraulic engine controls
- Kidde CO2 engine room fire control system and fire extinguishers throughout
- Mechanical bilge pump and 3 back-up pumps
- Morse Single Lever engine controls
- Racor dual fuel filters; single Racor filters for generators
- Rheem 30 gallon hot water heater
- Underwater exhaust with Keystone side valves
- Wagner hydraulic steering
- Wesmar stabilizers - replaces original Vospers
-

Exclusions

Accessories, personal items, & artwork

Exclusions

Owner's personal belongings.

Disclaimer

The Company offers the details of this vessel or yacht in good faith but cannot guarantee or warrant the accuracy of this information nor warrant the condition of the vessel. A buyer should instruct his representatives, agents, or his surveyors, to investigate such details as the buyer desires validated. This vessel or yacht is offered subject to prior sale, price change, or withdrawal without notice.

PHOTOS

Salon



Salon



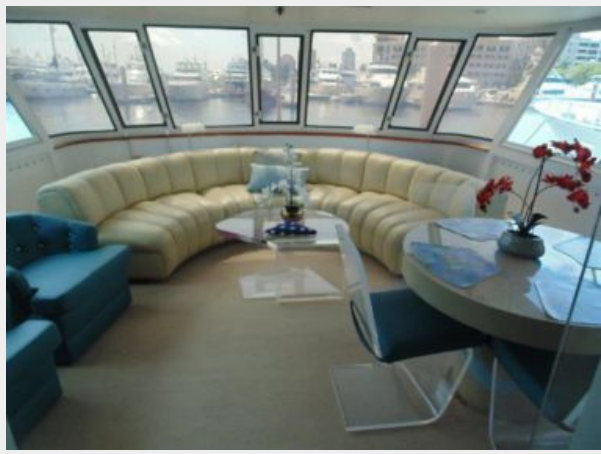
Salon



Salon



Aft Deck



Aft Deck



Head



Head



Galley



Galley



Crew Quarters



Head



Crew Quarters



Crew Quarters



Stairway



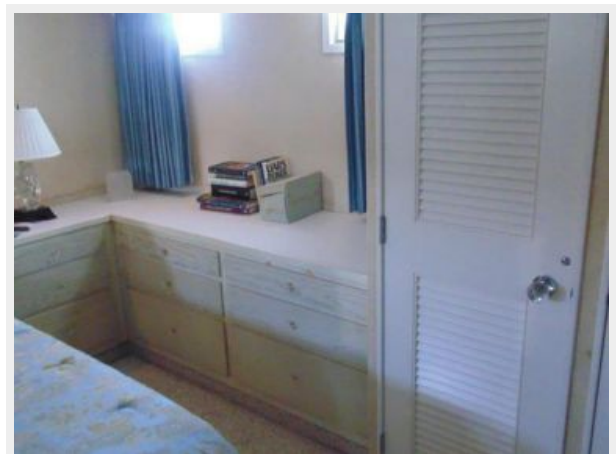
Master Stateroom



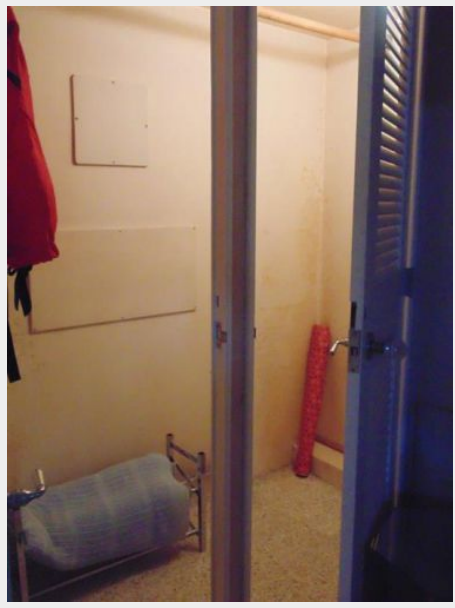
Master Stateroom



Master Stateroom



Closet



Master Stateroom



Head



Head



Companionway



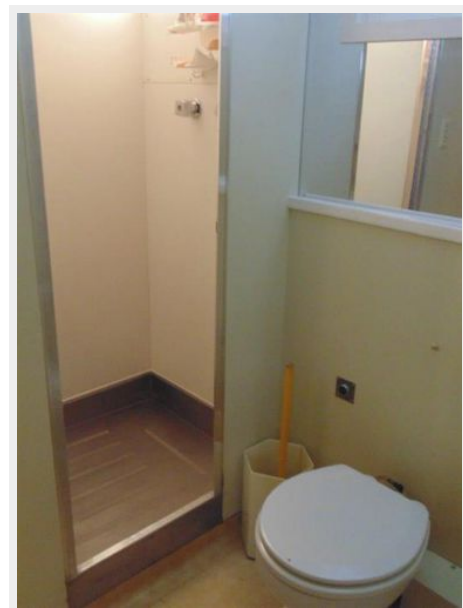
Guest Stateroom



Guest Stateroom



Head



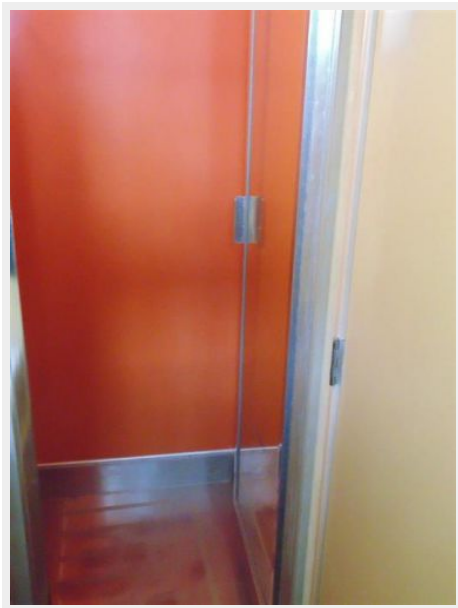
Head



Head



Closet



Guest Stateroom



Guest Stateroom



Pilothouse



Pilothouse



Flybridge Helm



Aft Flybridge



Aft Flybridge



Flybridge



Passageway



Forward Deck



Passageway



Engine Room



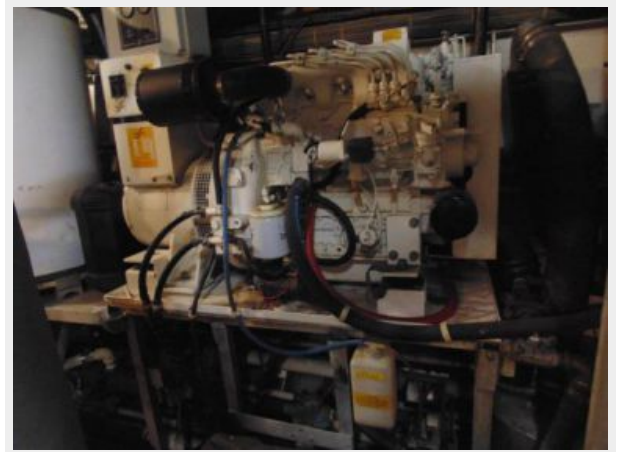
Engine Room



Engine Room



Engine Room



Engine Room



Engine Room



SMALL WORLD



CONTACTS

Andrey Shestakov, leading yacht broker of the sales department of Shestakov Yacht Sales Inc. Shestakov Yacht Sales Inc., the official representative of the Miami/Fort Lauderdale FL headquarters.

Contact details

Email: andrey@shestakovyachtsales.com

Web: shestakovyachtsales.com/en/

Telephones

USA: +1(954)274-4435

Office hours

Monday – Saturday: **9:00 - 21:00** EDT

Sunday: **closed**

Address



Harbour Towne Marina, 850 NE 3rd St,
STE 213, Dania, FL 33004